

MISSION NEIGHBORHOOD GUERRERO PARK

GUERRERO PARK

Wednesday, November 29th 2017

PUBLIC WORKSHOP AGENDA

- **6-6:15:** Introduction by HOK and SF Planning
 - Park Background
 - Unpack Vision Statement & Project Goals
 - Site Assessment
- **6:15-7:** Break-out Stations A and B
 - Switch stations at 6:25
- **7-7:15:** Report back
- **7:15-7:30:** Next Steps
 - Share Project Timeline
 - Please join us for our next Public Workshop on Sunday, January 28th in the park!

PARK BACKGROUND



PARK BACKGROUND

1938



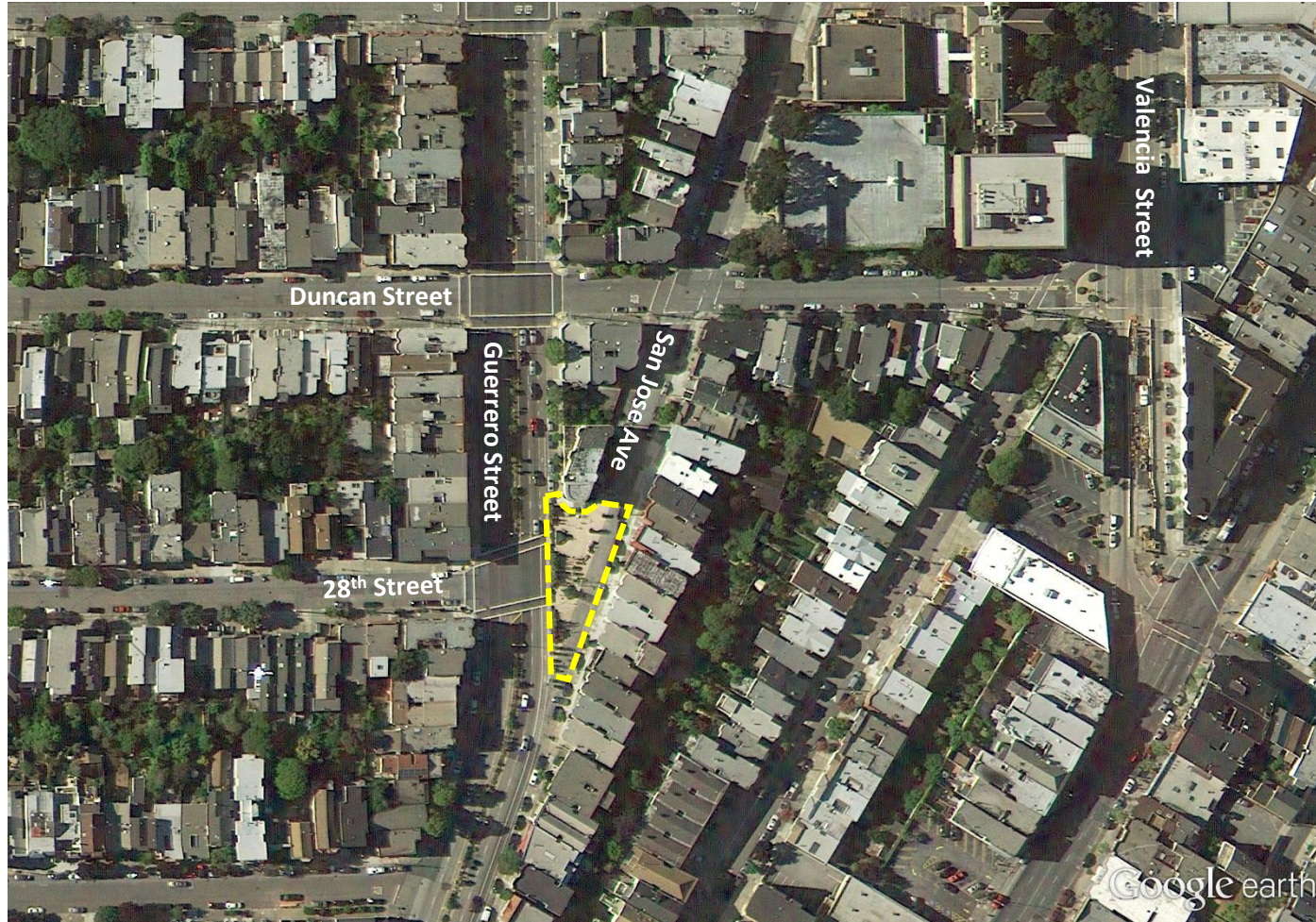
PARK BACKGROUND

2007



PARK BACKGROUND

2012



PROJECT VISION + GOALS



Park Future

Guerrero Park, San Francisco's next great public space, serves the community as a: southern gateway to The City, local open space, and focal point for culture, wellness, and play.



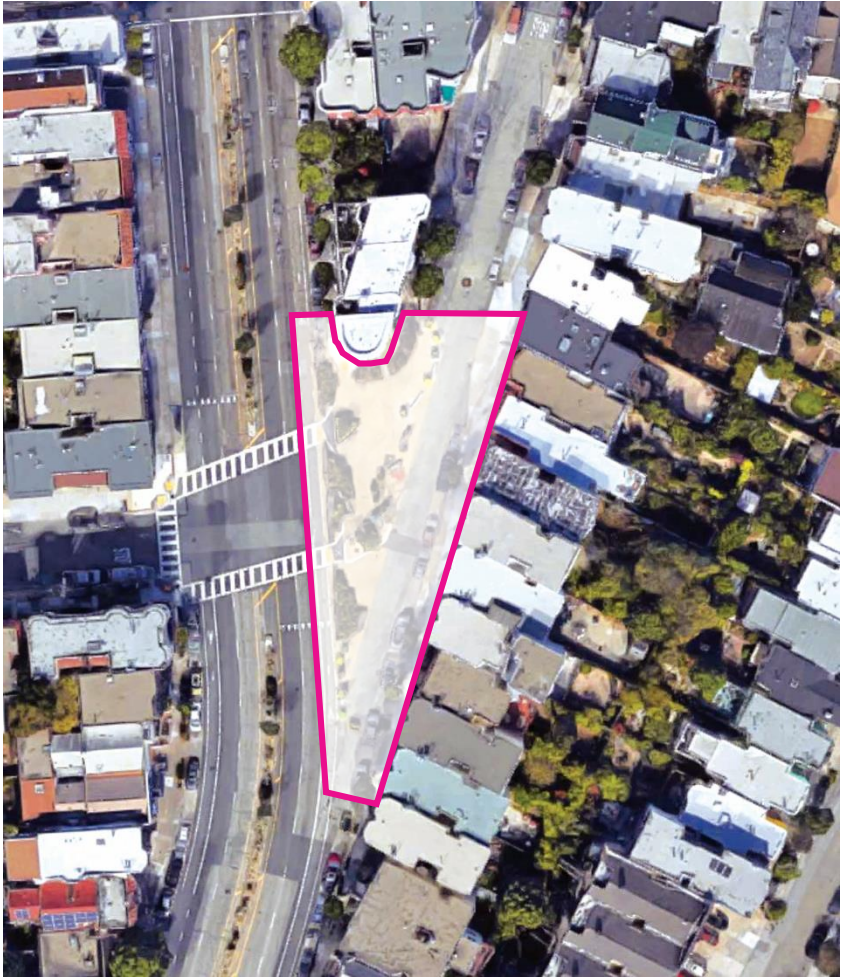
PROJECT VISION + GOALS



Project Goals

- **SAFETY:** Enhance pedestrian and bicycle safety
- **CONNECTION:** Improve connections with surrounding neighborhoods
- **INCLUSION:** Create an inviting public space for everyone
- **PLACE:** Create a strong sense of place that supports neighborhood identity
- **DURABLE:** Create long-lasting park improvements
- **FLEXIBLE:** Develop a flexible design that embraces multiple uses

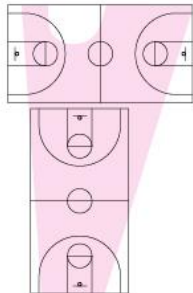
SITE ASSESSMENT – SCALE COMPARISONS



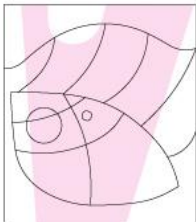
GUERRERO PARK
approx.
5,930 sq ft



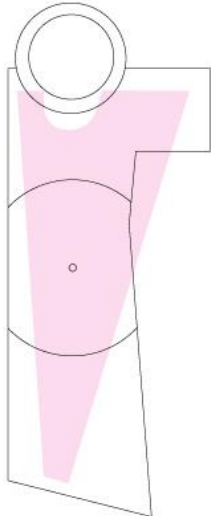
**~2 BASKETBALL
COURTS**



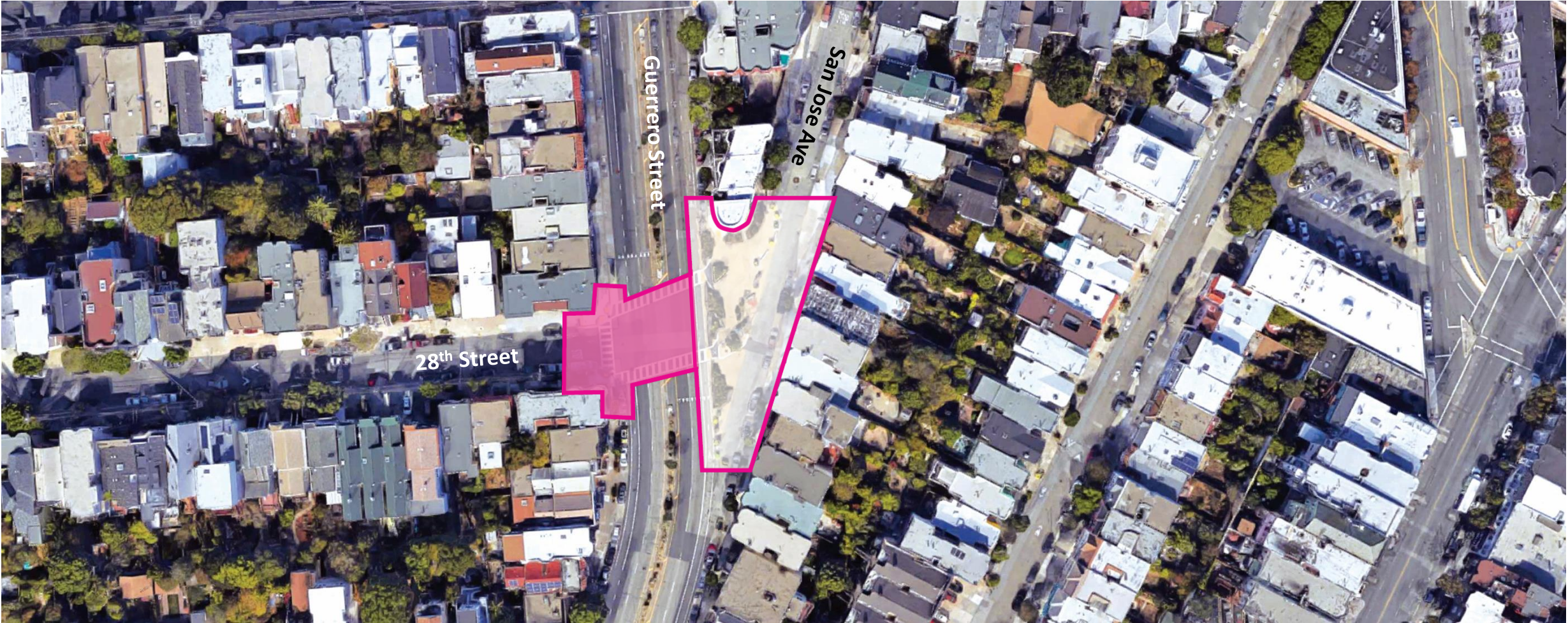
**~1 MISSION
PLAYGROUND**



~1 UNITY PLAZA



SITE ASSESSMENT – 28TH STREET INTERSECTION



SITE ASSESSMENT - EXISTING CONDITIONS ON 28TH LOOKING EAST



SITE ASSESSMENT - EXISTING CONDITIONS ON SAN JOSE LOOKING NORTH



SITE ASSESSMENT - EXISTING CONDITIONS



BIKE LANE ON SAN JOSE LOOKING NORTH



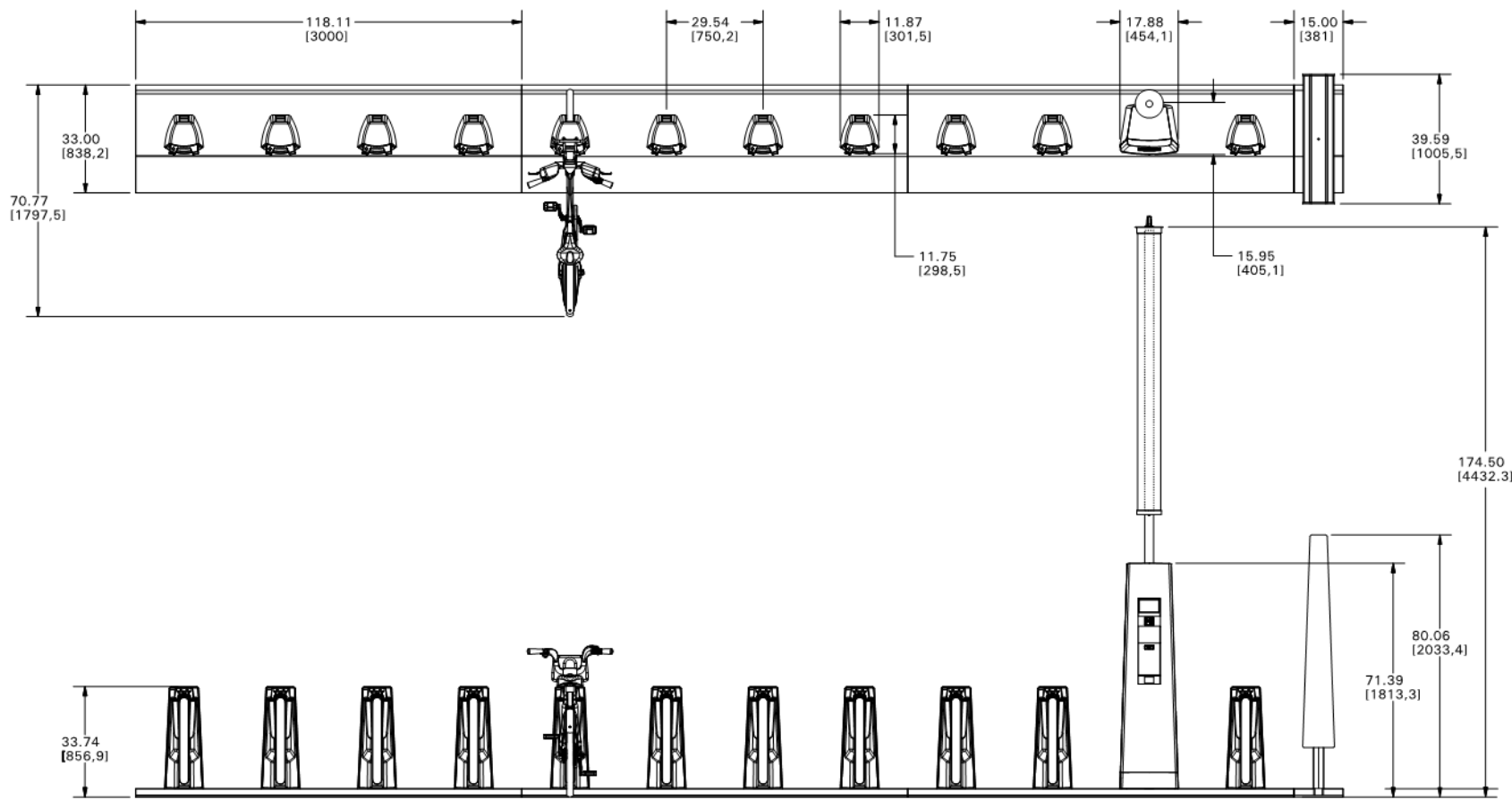
INTERIOR VIEW LOOKING NORTH



CAFÉ ACROSS THE STREET

SITE ASSESSMENT - EXISTING CONDITIONS

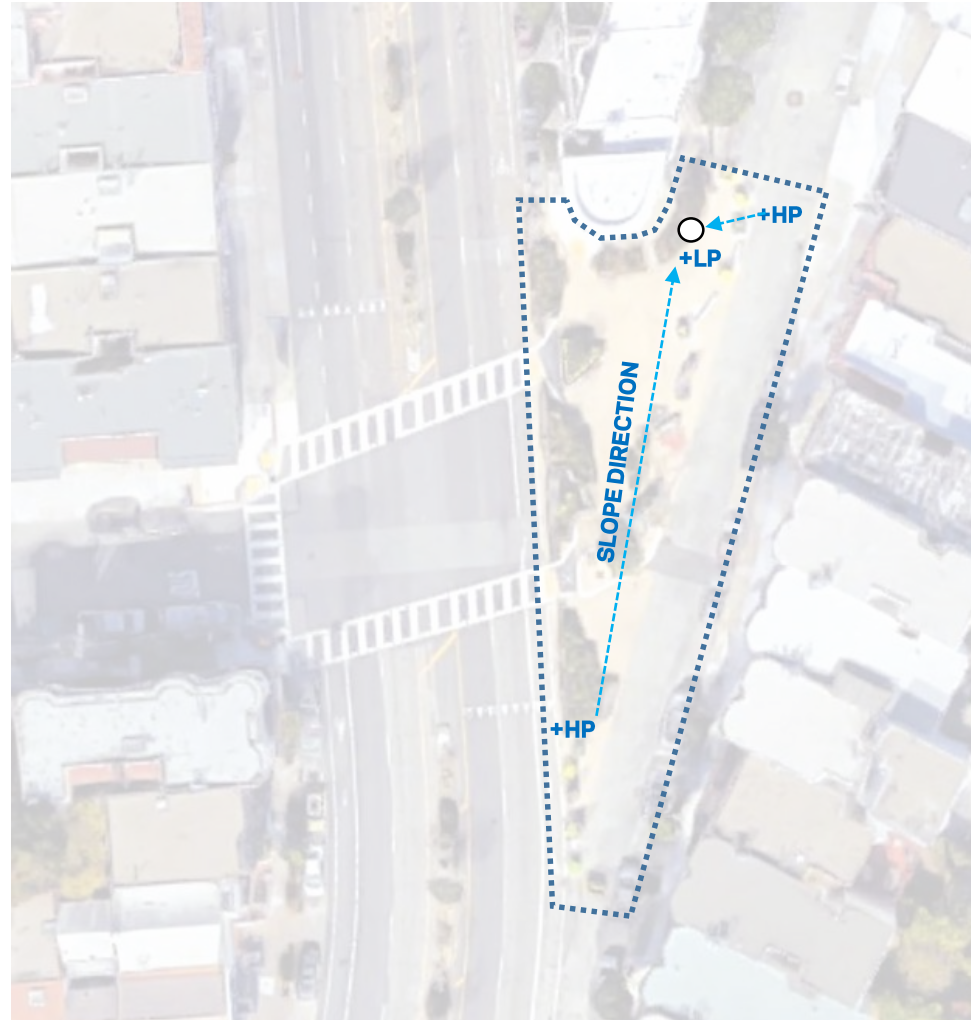
POTENTIAL BIKE STATION PROPOSAL



SITE ASSESSMENT DIAGRAM – EXISTING CONDITIONS

Topography

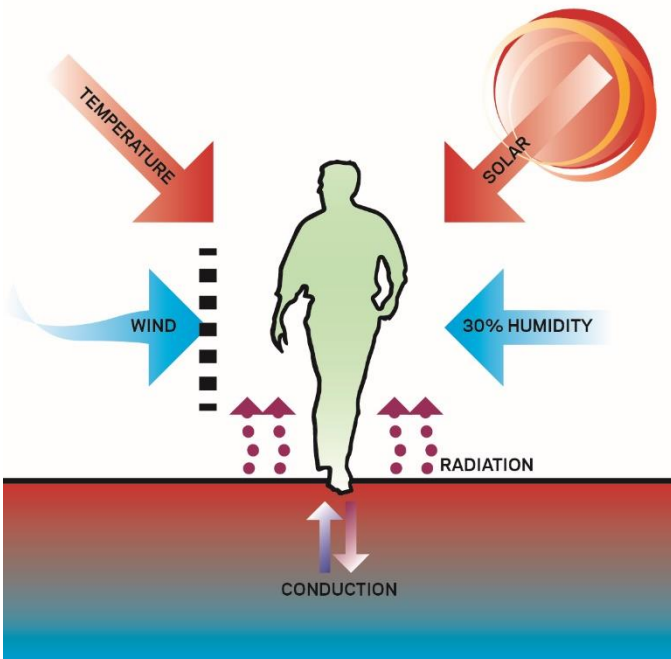
The park slopes gently to a low point at the north. During a rain event, water trickles down to the north captured by a storm drain and existing planting.



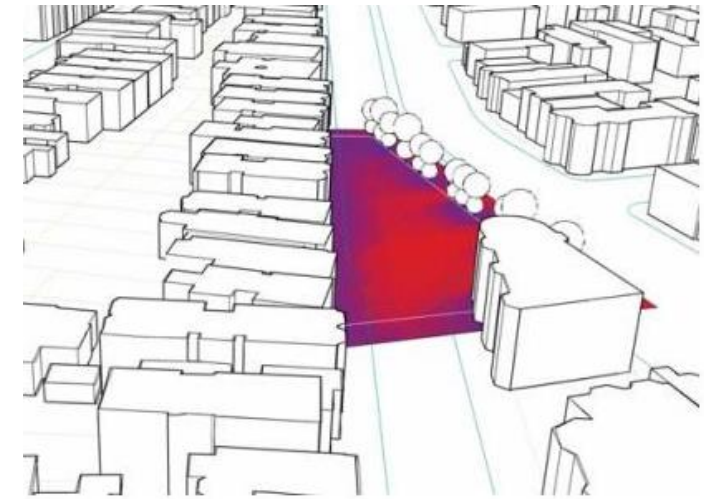
COMFORT ANALYSIS

Spring/Fall Sun

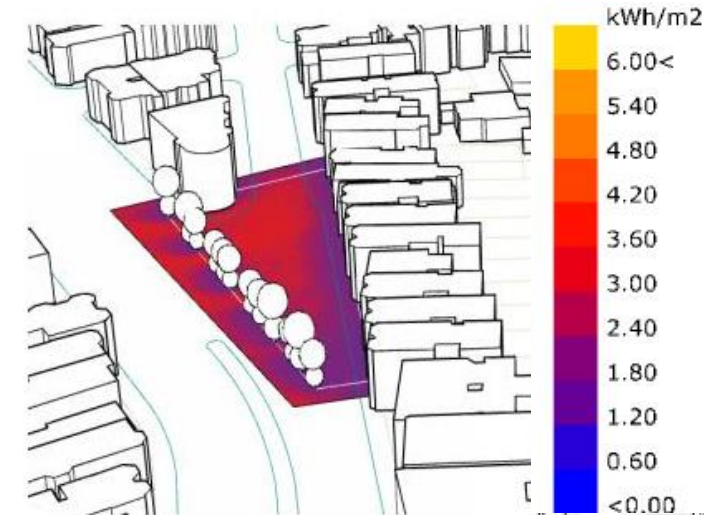
Temperatures in the sun are comfortable for standing, sitting, and active recreation. Northeast corner has most consistent exposure year round and enables social gathering and athletic activities.



Mar/Sep 21 (8:00am - 4:00pm)



North- East View

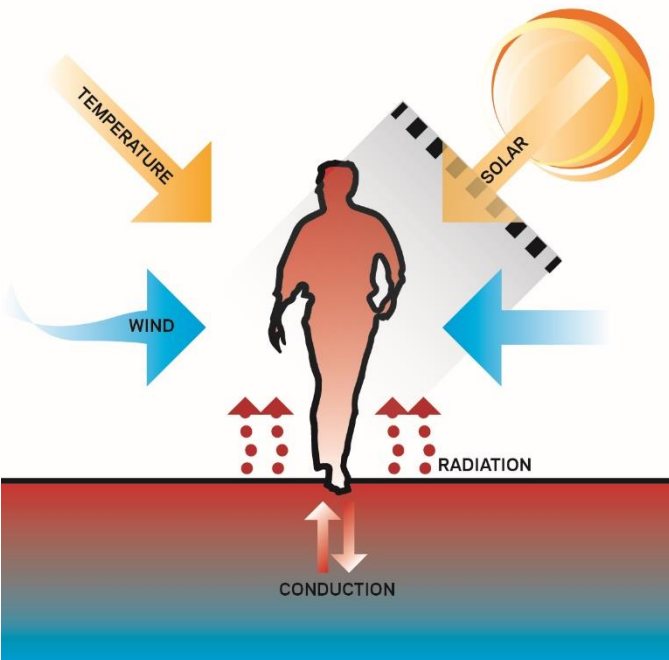


South- West View

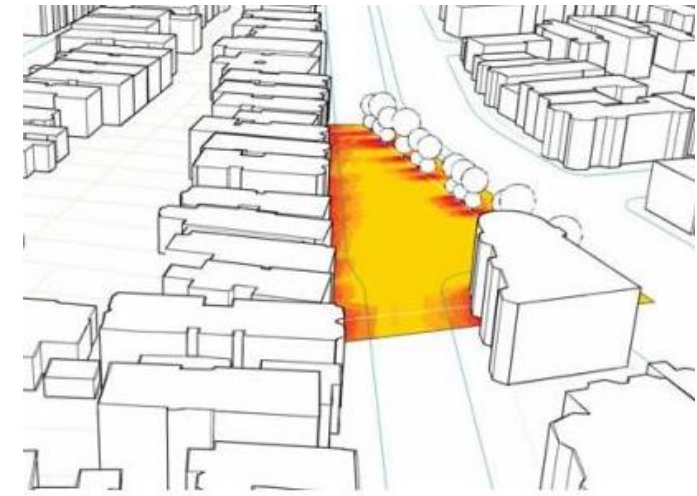
COMFORT ANALYSIS

Summer Sun

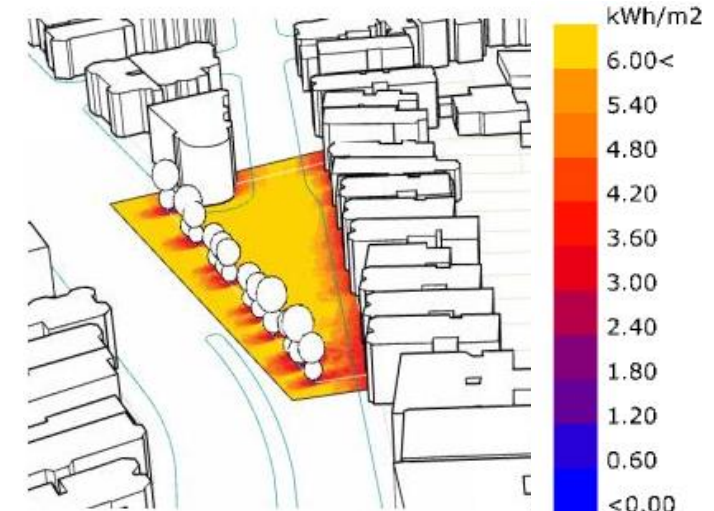
Temperatures in the sun are comfortable during morning but uncomfortable during mid-afternoon with increased exposure. People will likely congregate toward tree cover for shade/breeze relief.



June 21 (8:00am - 4:00pm)



North- East View

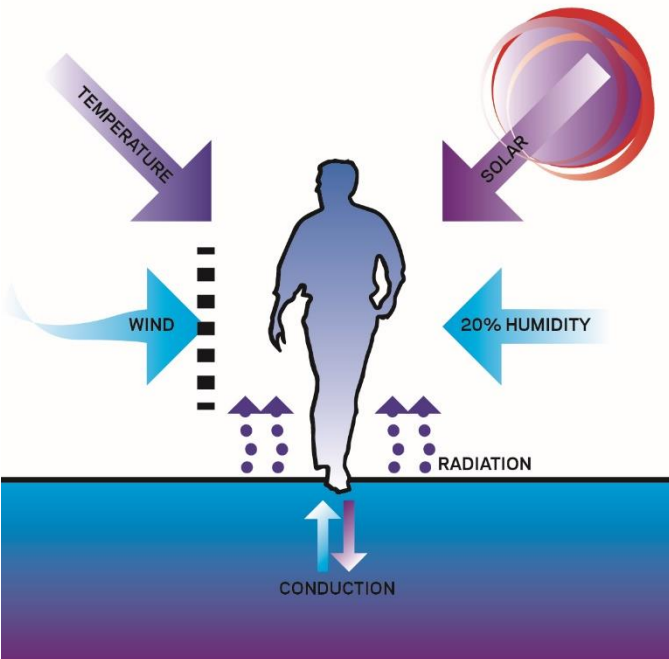


South- West View

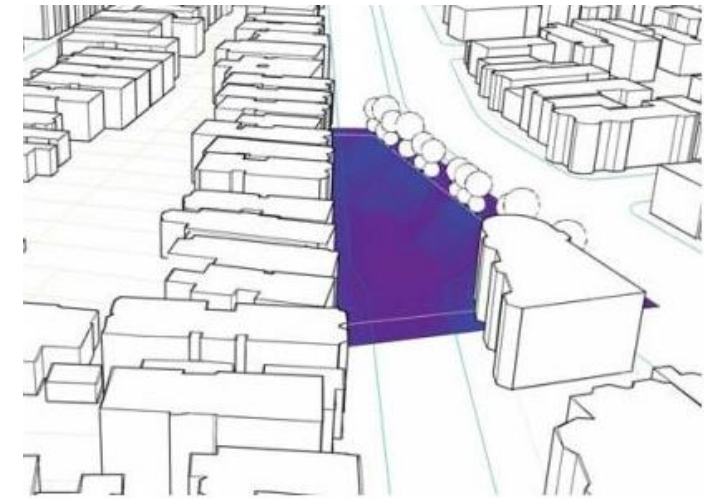
COMFORT ANALYSIS

Winter Sun

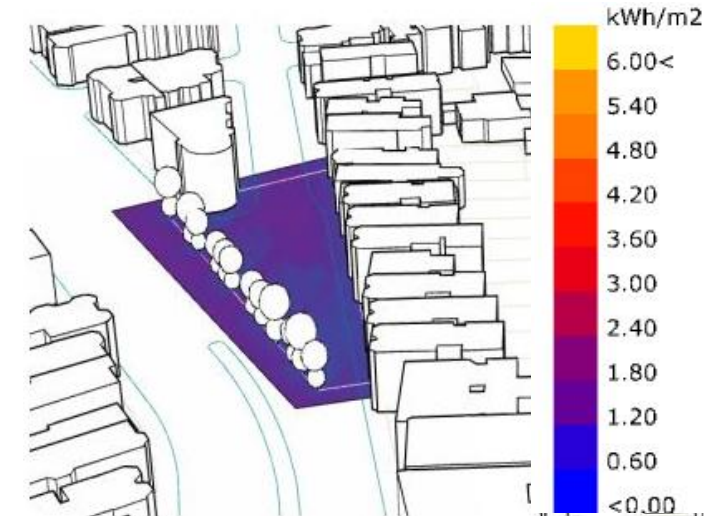
Temperatures in the sun are comfortable but period of exposure is limited. People will want cover from breezes and cluster around warmest areas of plaza.



Dec 21 (8:00am - 4:00pm)



North- East View

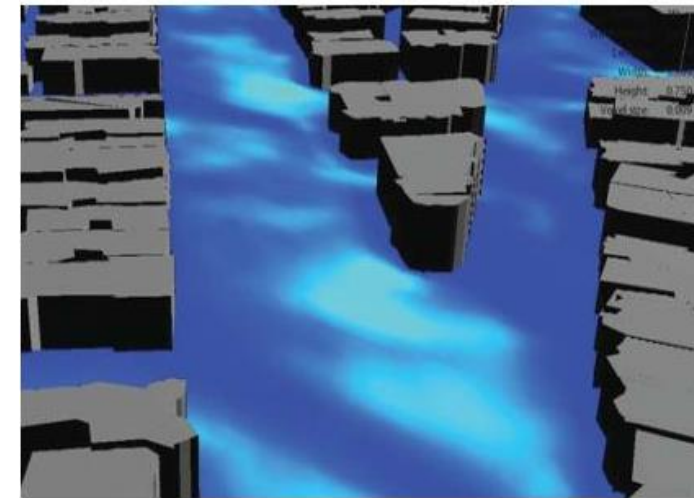
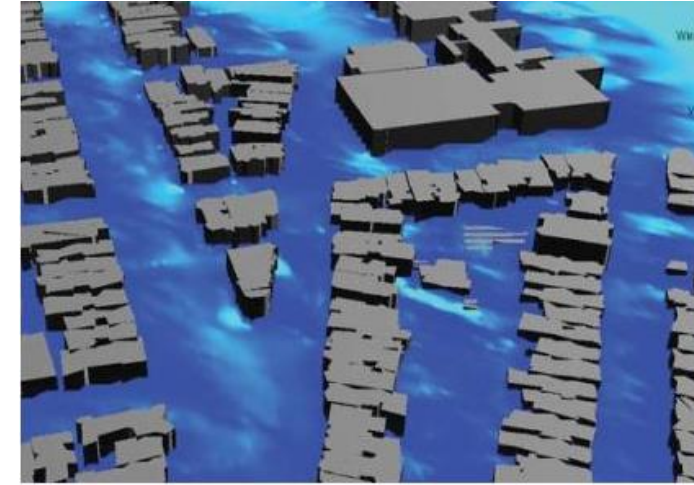
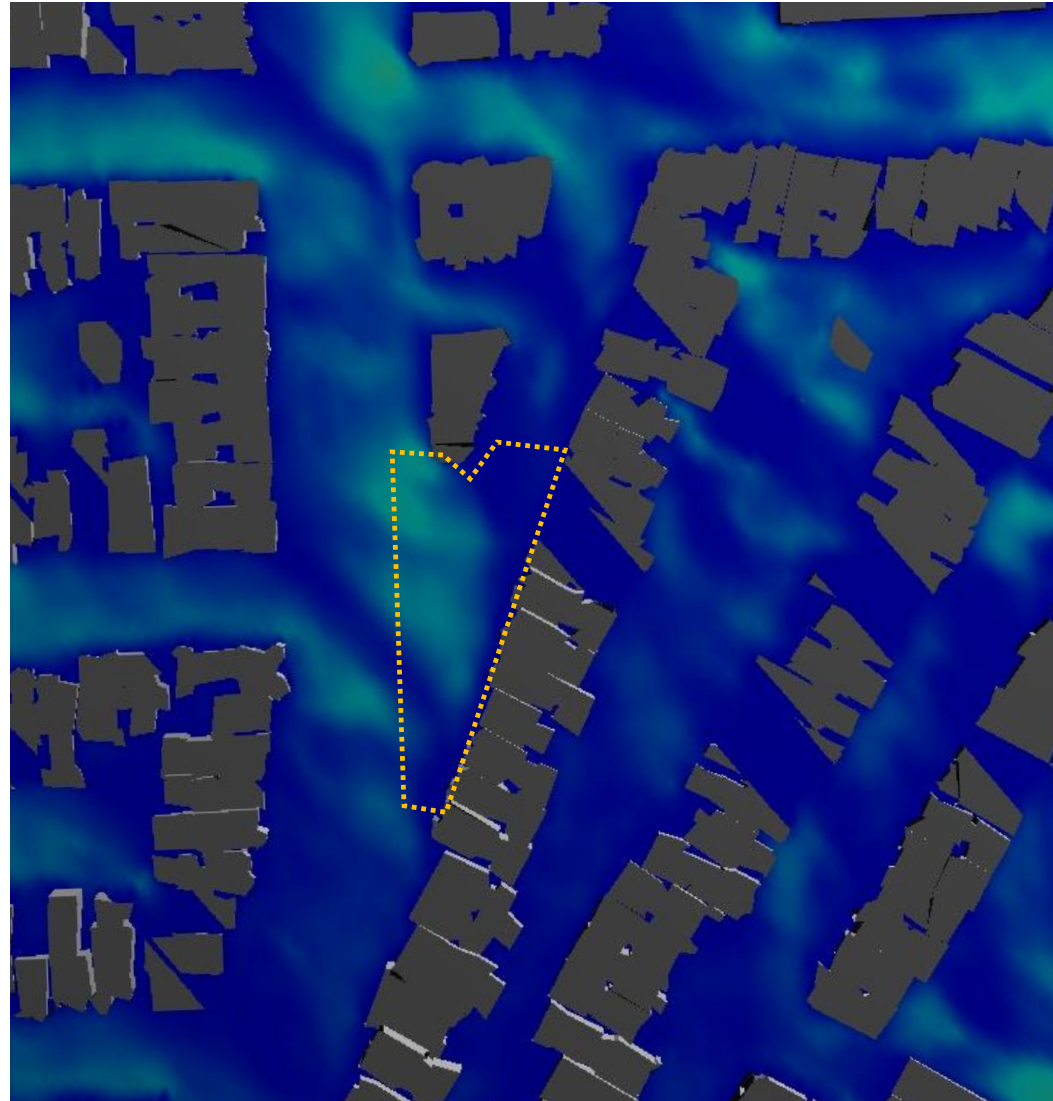
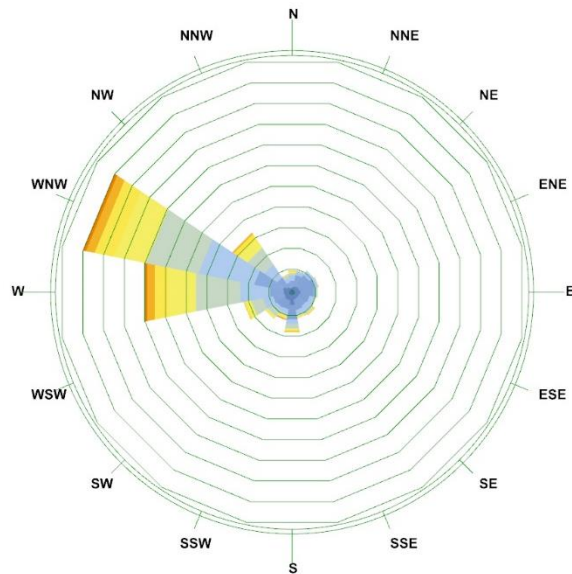


South- West View

COMFORT ANALYSIS

Annual Wind Condition

Dominant western breezes have cooling effect over the plaza. This will be a welcome relief during summer months, but has a cooling effect from October through June resulting in discomfort. Trees and berm landscape may buffer that breeze.



SITE ASSESSMENT- INFORMS ZONES

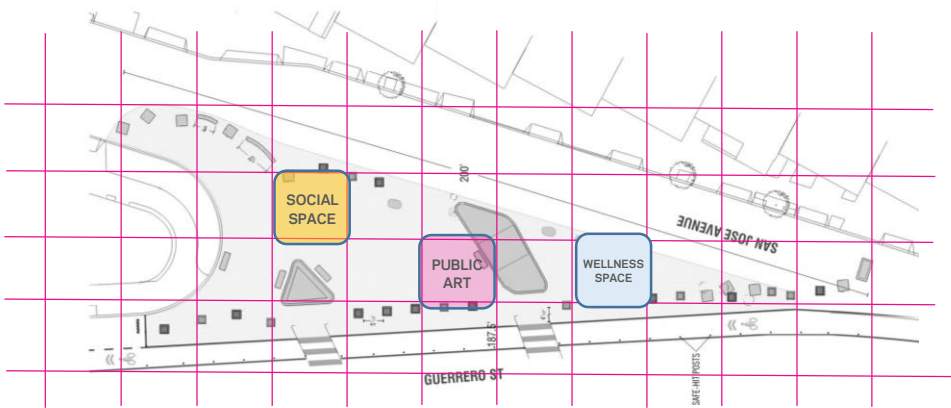


BREAK-OUT STATIONS

STATION A – WHAT DO WE WANT TO DO HERE?

CURRENT USES	FUTURE CHARACTER		
What are the current uses of the park?	What uses do you envision for this space?		

STATION B – WHERE DO WE WANT PROGRAM TO BE?



BREAK-OUT SESSIONS STATION A

CURRENT USES

What are the current uses of the park?

FUTURE USES

What uses do you envision for this space?

BREAK-OUT SESSIONS STATION A

CURRENT USES

What are the current uses of the park?

FUTURE CHARACTER

What uses do you envision for this space?

How can we make our communities healthier?
Fitness, wellness, gardens

How can we return greenery to our neighborhood?
Pollinators, etc.

How can we create a community heart?
Social focus, food trucks, event space

How can we celebrate our culture and arts?
Public arts, exhibition space, ground paintings, mosaics

BREAK-OUT SESSIONS STATION A

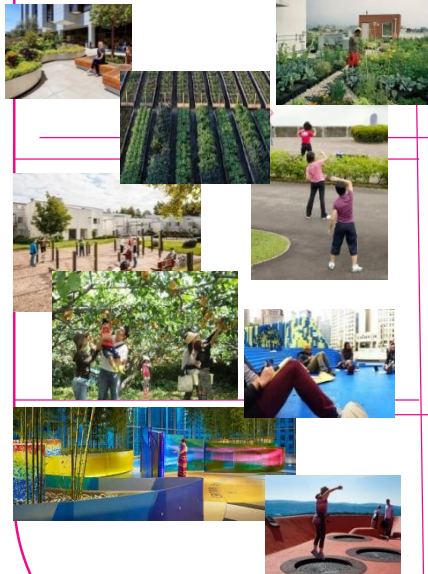
CURRENT USES

What are the current uses of the park?

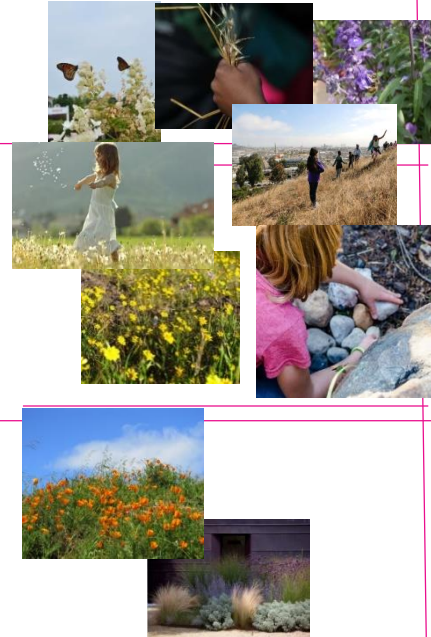
FUTURE CHARACTER

What uses do you envision for this space?

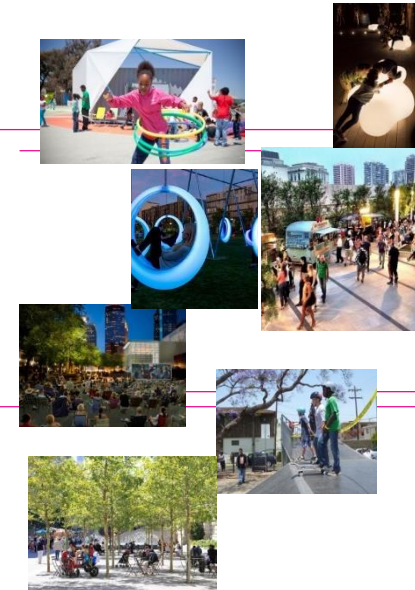
How can we make our communities healthier?
Fitness, wellness, gardens



How can we return greenery to our neighborhood?
Pollinators, etc.



How can we create a community heart?
Social focus, food trucks, event space






How can we celebrate our culture and arts?
Public arts, exhibition space, ground paintings, mosaics

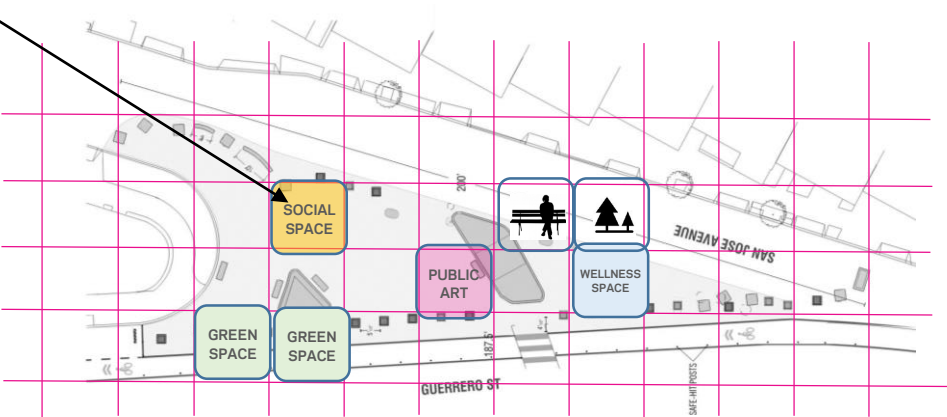


BREAK-OUT SESSIONS STATION B

SITE PLAN PROGRAM IDENTIFICATION

	GREEN SPACE	SOCIAL SPACE
SAFETY BUFFER		WELLNESS SPACE
GARDEN	PUBLIC ART	SEATING
	OPEN AREA	?

Identify Park Programming Areas!



Place tiles on the board to identify areas

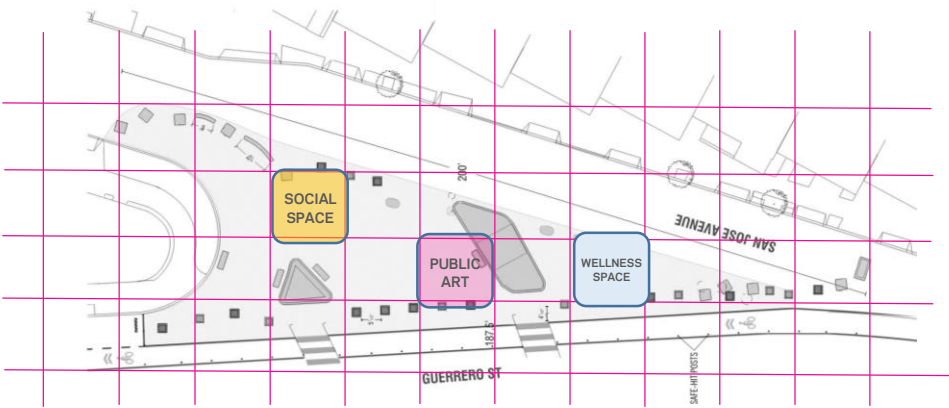


REPORT BACK

STATION A – WHAT DO WE WANT TO DO HERE?

CURRENT USES	FUTURE CHARACTER		
What are the current uses of the park?	What uses do you envision for this space?		

STATION B – WHERE DO WE WANT PROGRAM TO BE?



NEXT STEPS - PROJECT SCHEDULE

1. Public Input Workshops:

- a) Public Workshop #1 Complete! Thank you all for your participation!
- b) **Pop-up Workshop in the Park!** Please join us in the park on **Sunday, January 28th** for an additional input session!
- c) Public Workshop #2 – Please join us in **March** to provide feedback and see how our work today and at the pop-up will develop into a conceptual design for the park!
 - a) (please use sign-up sheets)

2. Permitting and Bidding Phase – Proposed Summer of 2018

3. Construction - Proposed for Fall of 2018

MISSION NEIGHBORHOOD GUERRERO PARK



THANK YOU!

Please visit the park website for updates:
groundplaysf.org/projects/san-jose-guerrero-park

Wednesday, November 29th 2017

