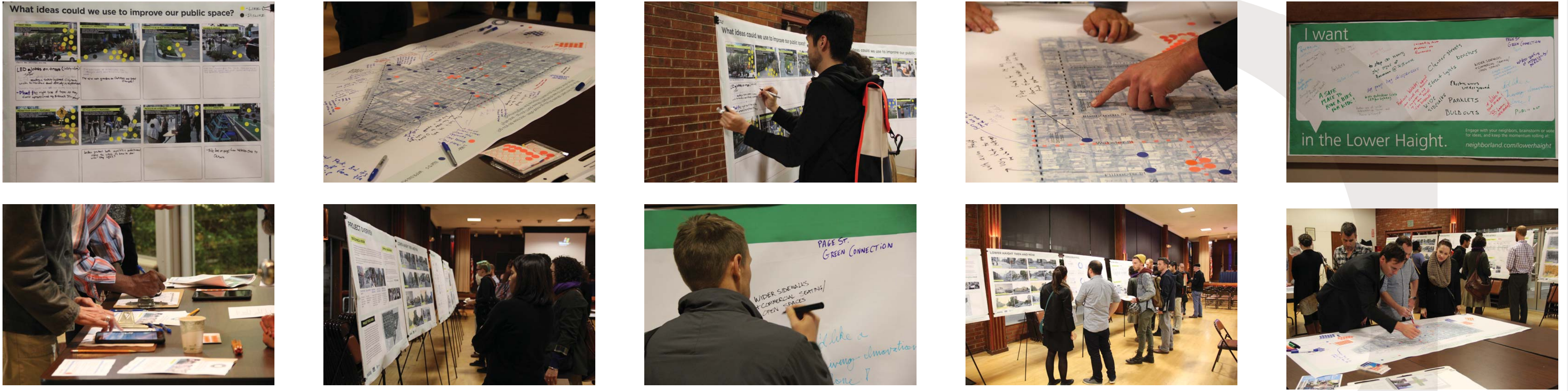


COMMUNITY INPUT: WHAT WE HEARD



The City held an **Open House Community Workshop on November 18, 2015** to get ideas and input from residents, merchants, neighbors, and others on what improvements they would like to see in the Lower Haight. Hundreds of ideas were generated, jump-starting the concept design process. Some ideas were unique, while many others were similar to each other. All ideas were analyzed and studied in depth. From these hundreds of ideas emerged certain themes that came up again and again. These themes informed, shaped, and were eventually formulated into **five core community design principles**, below, that now help guide concept design. These core principles, in turn, were collected into a **cohesive, integrated neighborhood-wide design framework** for public realm improvements (bottom).

COMMUNITY DESIGN CORE PRINCIPLES



VIBRANT PUBLIC REALM

Active + clean sidewalks, active street facades, public gathering spaces, pedestrian lighting



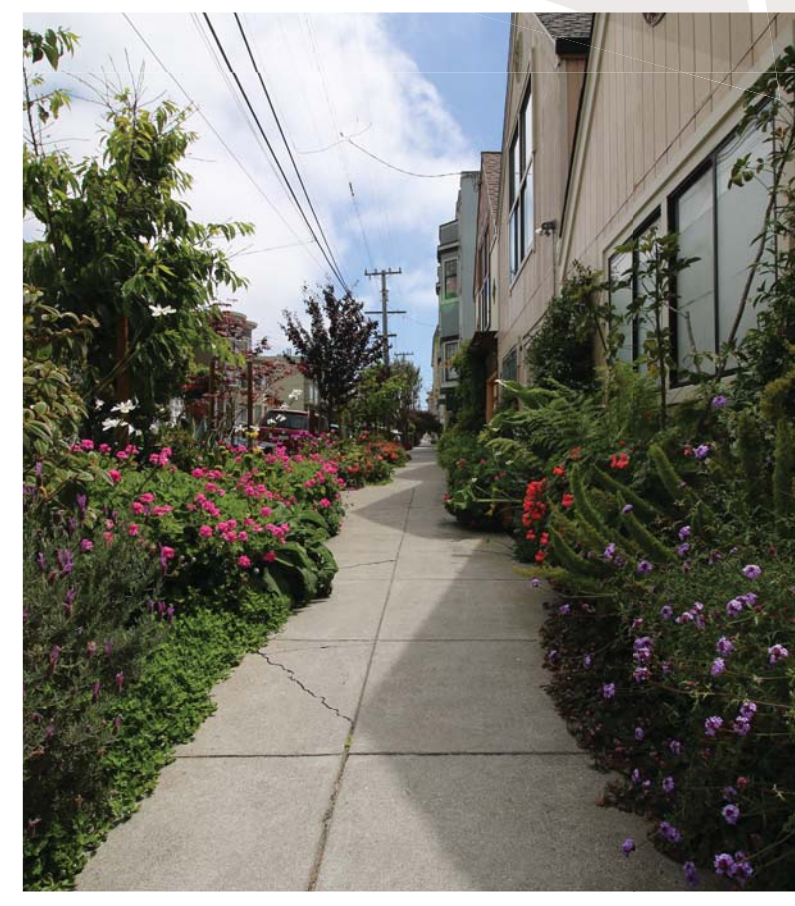
MORE MOBILITY

Increase safety and comfort for pedestrians and bicyclists



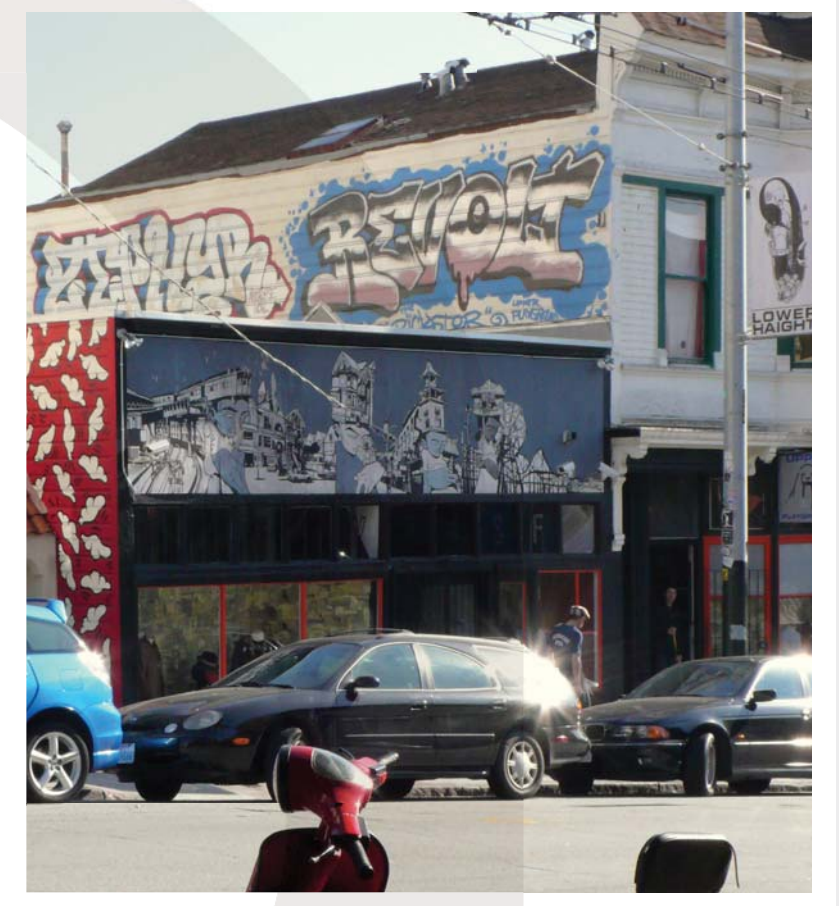
INNOVATIVE STREETS

Explore special streets/green connections



GREEN SPACES

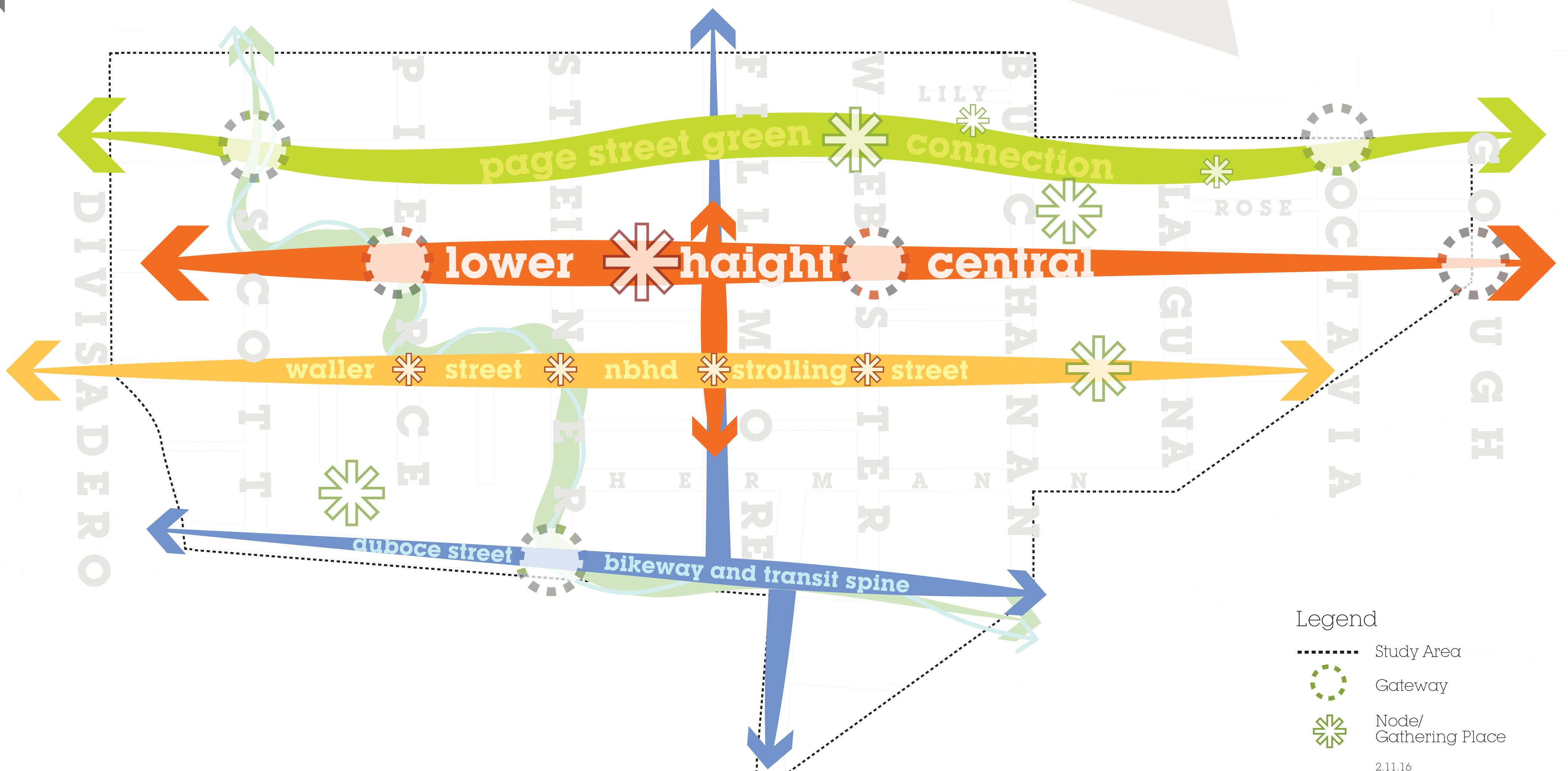
More street trees + sidewalk landscaping everywhere



CELEBRATE IDENTITY

Bring out Lower Haight's character and its key role as the neighborhood center

LOWER HAIGHT PUBLIC REALM DESIGN FRAMEWORK



FOR MORE INFO, VISIT:
SF-PLANNING.ORG/LOWER-HAIGHT-PUBLIC-REALM-PLAN
 COMMUNITY WORKSHOP (#2) MAY 9, 2016

