

PROJECT OVERVIEW



The interagency team held two public open houses **November 18, 2015** and on **May 9, 2016** to get ideas and input from residents, merchants, and others on what improvements they would like to see in the Lower Haight's public realm. Hundreds of ideas were generated, jump-starting the concept design process. From these hundreds of ideas emerged certain themes that came up again and again. These themes informed and shapes into **five core community design principles**, below, that now help guide concept design. These core principles, in turn, were collected into a **cohesive, neighborhood-wide design framework** for public realm improvements (bottom). In addition, two main focus areas were further vetted and refined which are Haight Street Commercial Core and Page Street. Our informational handout contains more information. Please see staff for more information.

SCHEDULE

Date	Milestone
FALL 2015	Existing Conditions Analysis Open House #1 Outreach to Community Stakeholders
WINTER 2016	Conceptual Plan Development Ongoing Community Outreach
SPRING 2016	Open House #2 Continue Community Outreach
FALL 2016	Design Refinement Interagency Review
SPRING 2017	Final Open House #3 + Call for Ideas Released Finalize Public Realm Plan
TBD 2017	Temporary Public Space Installation/ Public Program

COMMUNITY DESIGN CORE PRINCIPLES



VIBRANT PUBLIC REALM

The public realm should be dynamic, well maintained and multi-functional. It should support spaces for the public life with active street facades and adequate



SUPPORT MOBILITY

Increase safety and comfort for pedestrians and bicyclists



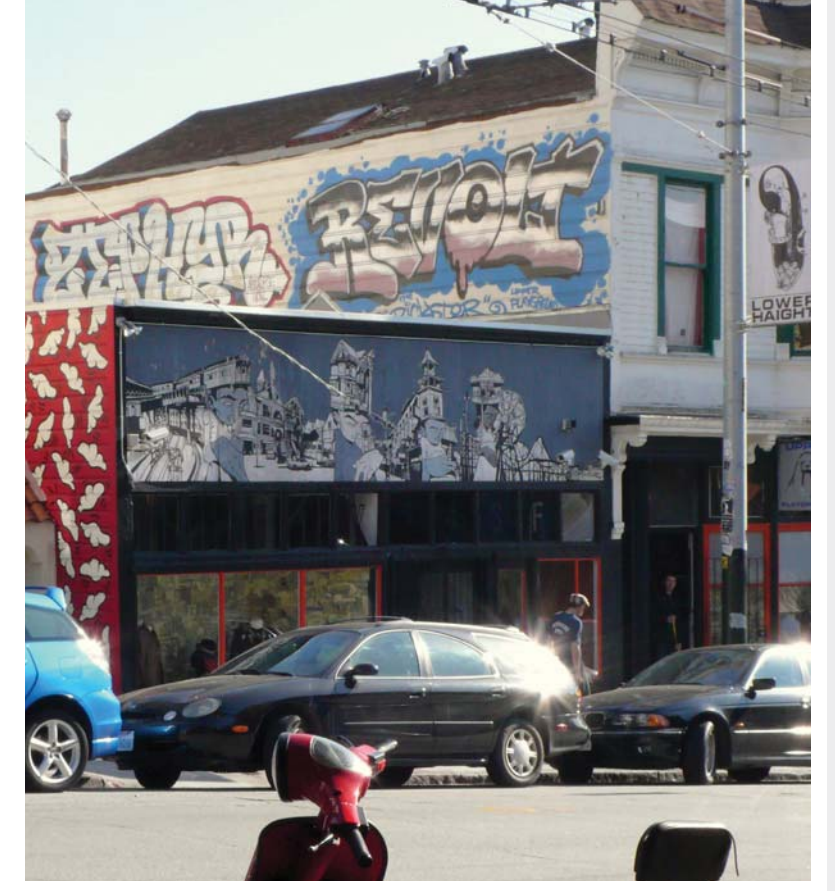
INNOVATIVE STREETS

Explore innovative streetscapes and build on the work of the City's Green Connections project.



GREEN SPACES

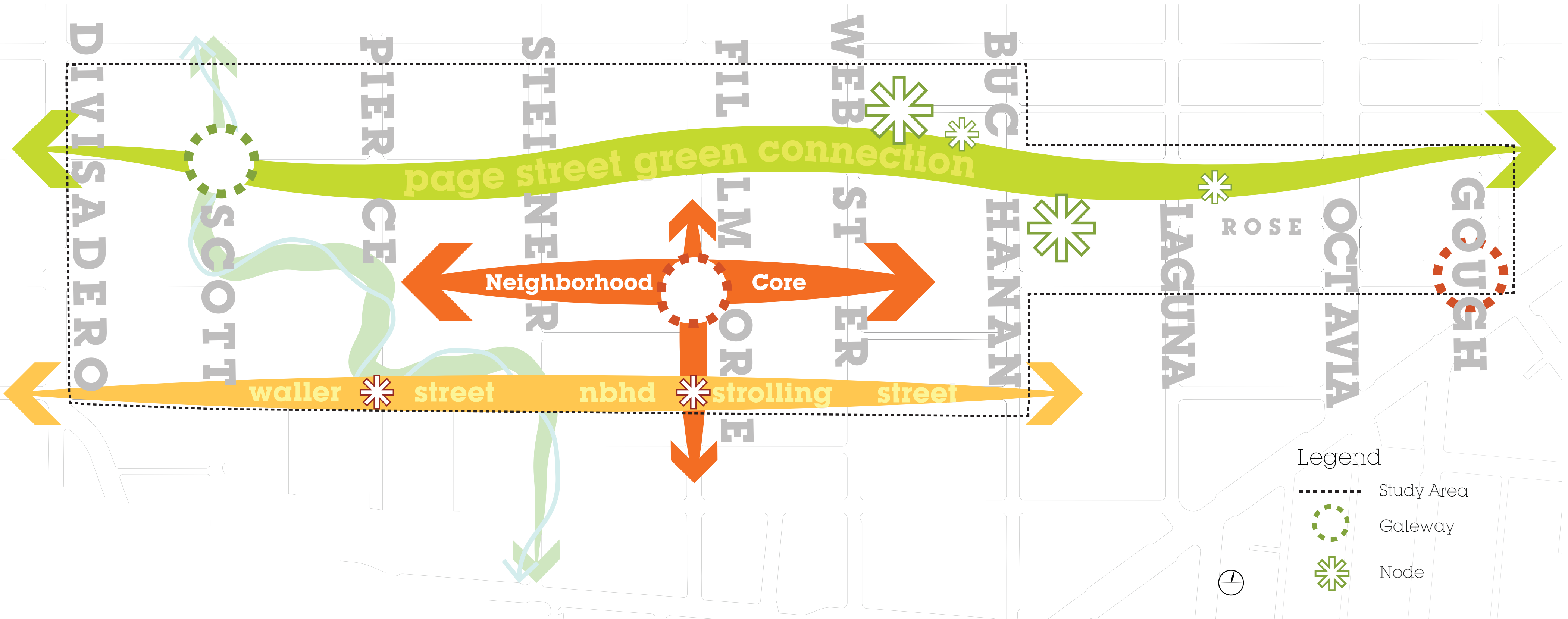
Street trees + sidewalk landscaping should be maximized when possible.



CELEBRATE IDENTITY

The public realm should enhance Lower Haight's character and support the commercial corridor as a contributing source as a neighborhood center.

PUBLIC REALM DESIGN FRAMEWORK



FOR MORE INFO, VISIT:
SF-PLANNING.ORG/LOWER-HAIGHT-PUBLIC-REALM-PLAN
 COMMUNITY OPEN HOUSE #3

