



# SAN FRANCISCO PLANNING DEPARTMENT

**MEMO**

## Disclaimer for Review of Plans

The San Francisco Planning Code requires that the plans of certain proposed projects be provided to members of the public prior to the City's approval action on the project. Accordingly, any images of plans featured on this website are provided for the primary purpose of facilitating public input prior to the City's action. The City and County of San Francisco does not own the copyright to these images. Please be aware that the unauthorized reproduction, distribution, or alteration of these images may result in a violation of Federal Copyright Law (17 U.S.C.A. Sections 101 et seq.) and that any party who seeks to reproduce or alter these images does so at his or her own risk.

Additionally, plans provided on this website are limited to site plans, elevations and/or section details (floor plans and structural details may not be included). These are DRAFT PLANS being provided for public review PRIOR to the City's approval action on the project. Final plans may differ from those that are currently available for review.

1650 Mission St.  
Suite 400  
San Francisco,  
CA 94103-2479

Reception:  
**415.558.6378**

Fax:  
**415.558.6409**

Planning  
Information:  
**415.558.6377**

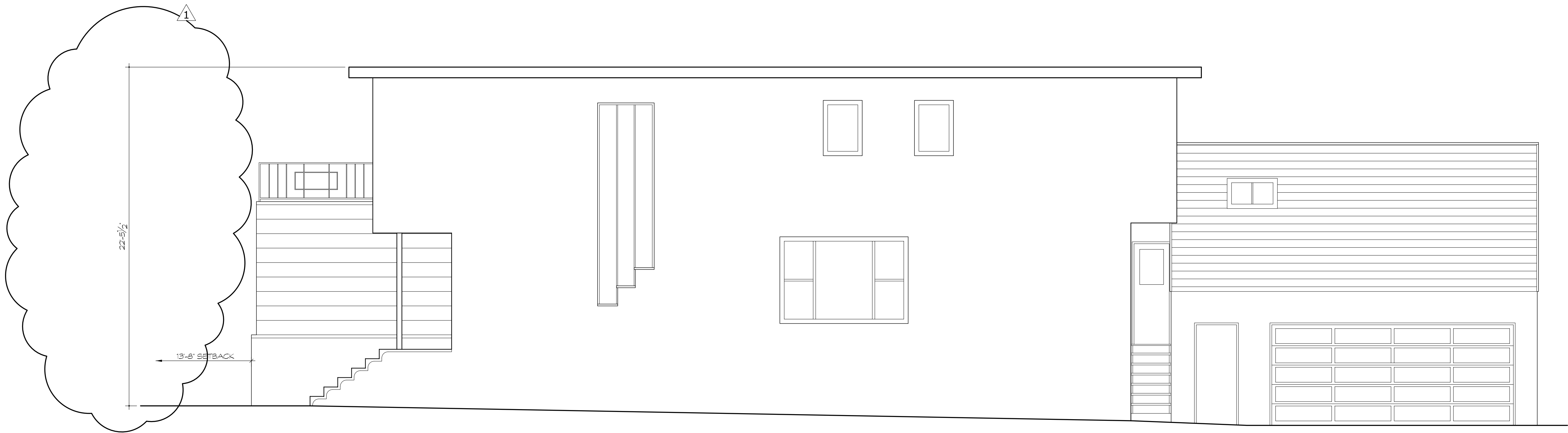




SUBJECT PROPERTY

EXISTING FRONT ELEVATION

1



EXISTING NORTH ELEVATION

2

Revisions	By
1 3-24-10 Per P.C. Comments	JPL
2 -	-
3 -	-
4 -	-

290 division suite 303  
san francisco 94103  
415 503 0555 t  
415 503 0550 f  
www.a6-ax.com

architecture

Jason Langhammer principal arch C-28796  
John Barone principal

COMMONWEALTH  
ADDITION

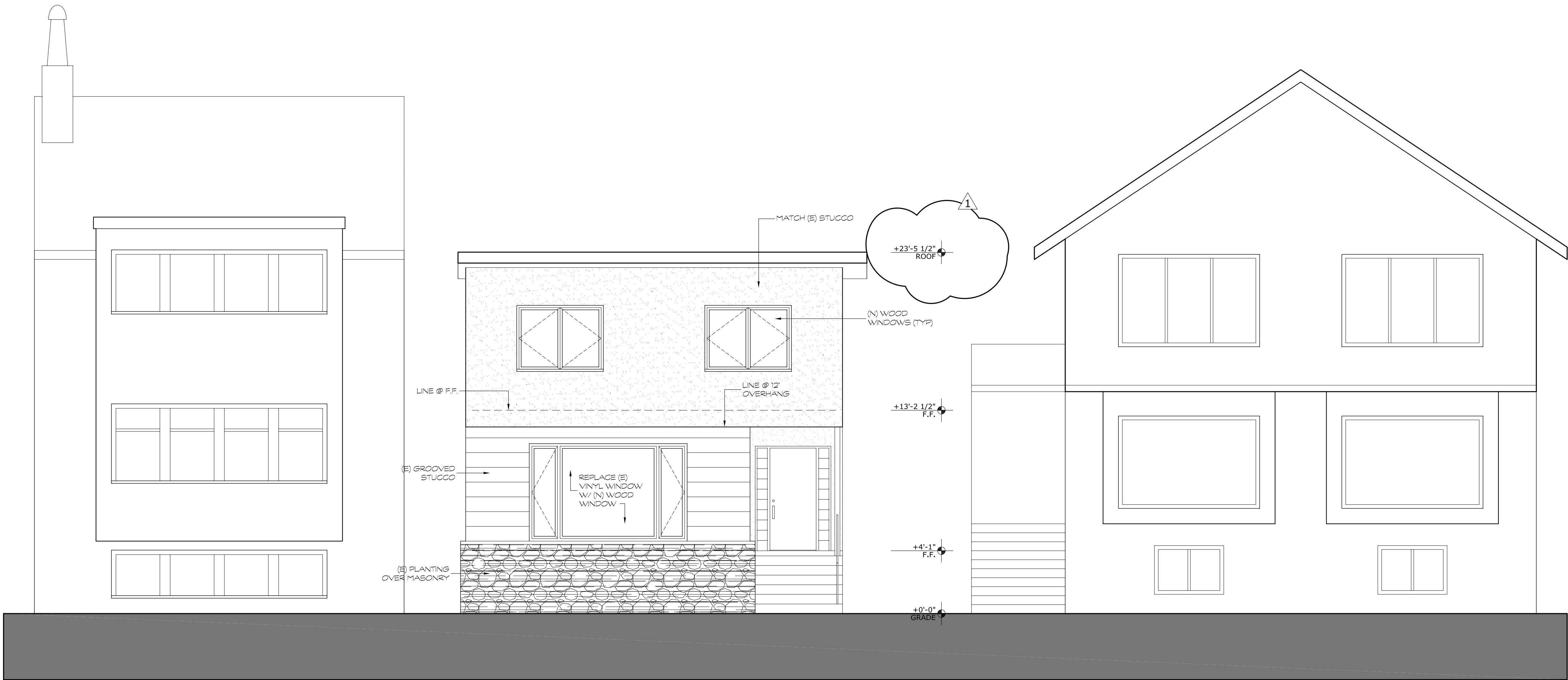
121 Commonwealth Avenue  
San Francisco, CA 94118  
APN: 1063-004

SITE PERMIT  
SUBMITTAL

SHEET CONTENTS:  
EXISTING  
ELEVATIONS

Date JAN 29, 2010  
Scale 1/4" = 1'-0"  
By -

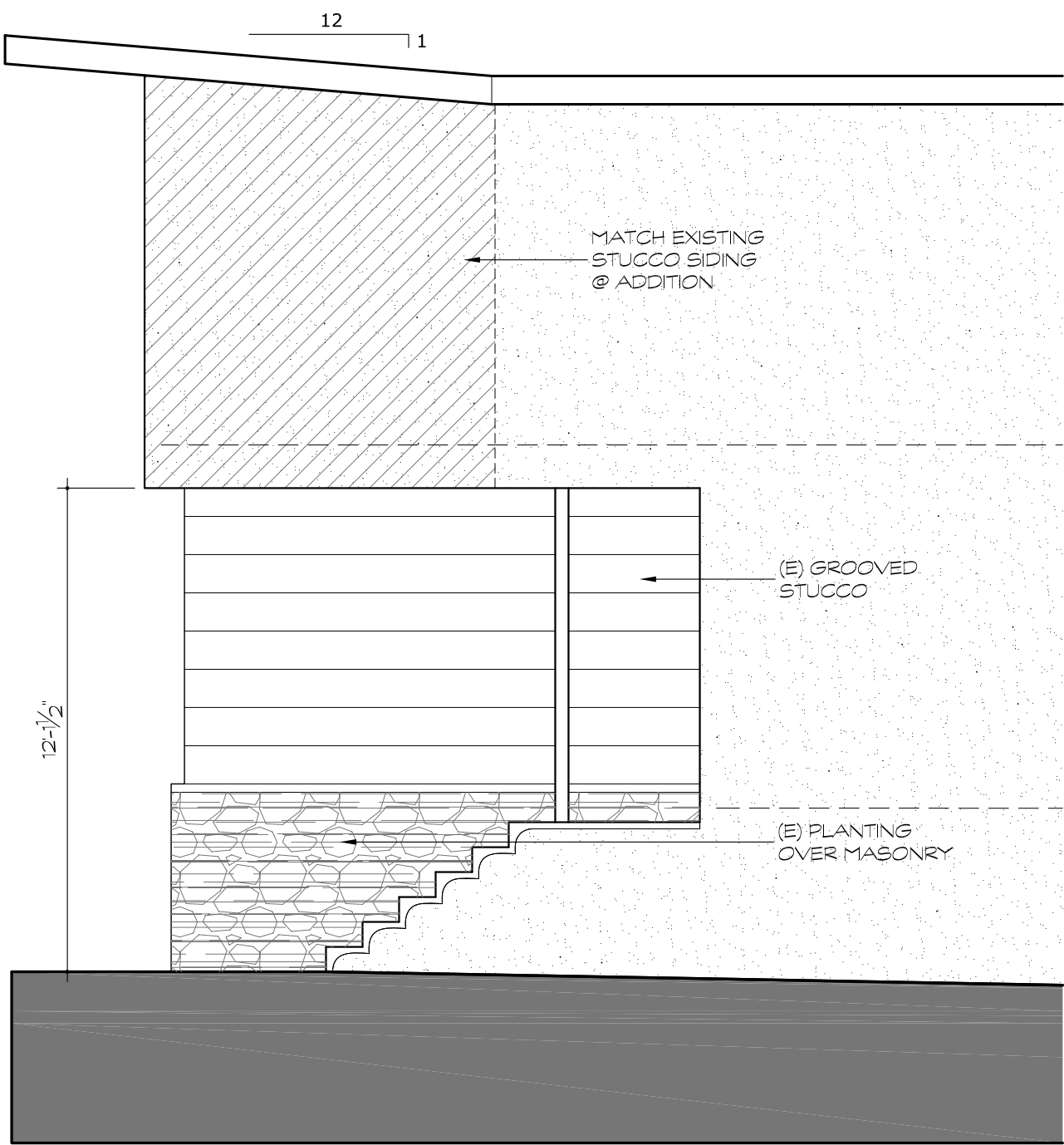
A1.3



SUBJECT PROPERTY

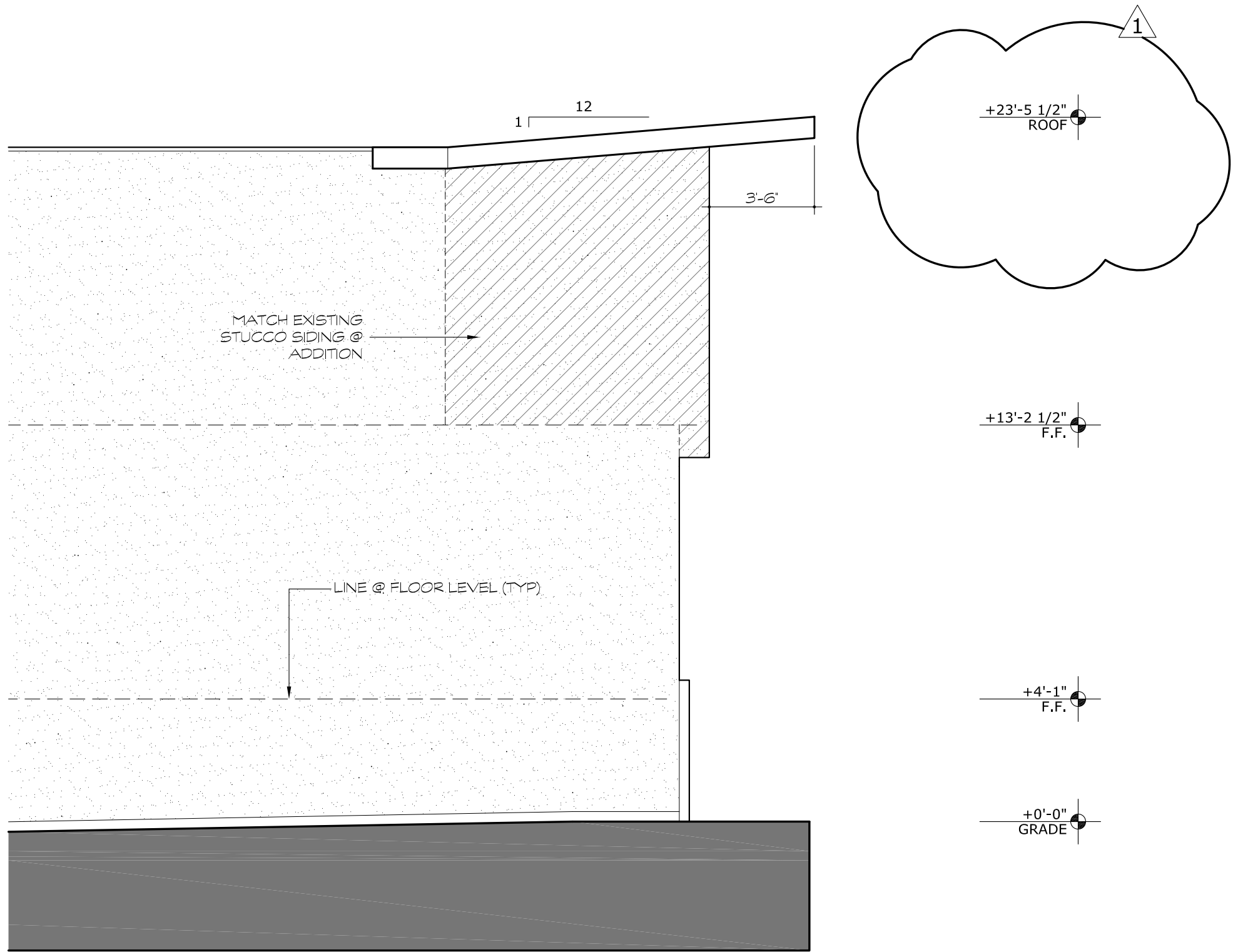
FRONT ELEVATION

1



PARTIAL NORTH ELEVATION

3



PARTIAL SOUTH ELEVATION

2

Revisions	By
1 3-24-10 Per P.C. Comments	JPL
2 -	-
3 -	-
4 -	-

290 division suite 303  
san francisco 94103  
415 503 0555 t  
415 503 0550 f  
www.a6-ak.com

Jason Langhammer principal arch C-28796  
John Barone principal

architecture  
a6

COMMONWEALTH  
ADDITION  
121 Commonwealth Avenue  
San Francisco, CA 94118  
APN: 1063-004

SITE PERMIT  
SUBMITTAL

SHEET CONTENTS:  
ELEVATIONS

Date JAN 29, 2010  
Scale 1/4" = 1'-0"  
By -

A3.1

Revisions	By
⚠ 3-24-10 Per P.C. Comments	JPL
△ -	-
△ -	-
△ -	-

290 division suite 303  
san francisco 94103  
415 503 0555 t  
415 503 0550 f  
www.a6-ax.com



290 division suite 303  
san francisco 94103  
415 503 0555 t  
415 503 0550 f  
www.a6-ax.com

jason langhammer principal arch C-28796  
john barone principal

jason langhammer principal arch C-28796  
john barone principal

COMMONWEALTH  
ADDITION

121 Commonwealth Avenue  
San Francisco, CA 94118  
APN: 1063-004

SITE PERMIT  
SUBMITTAL

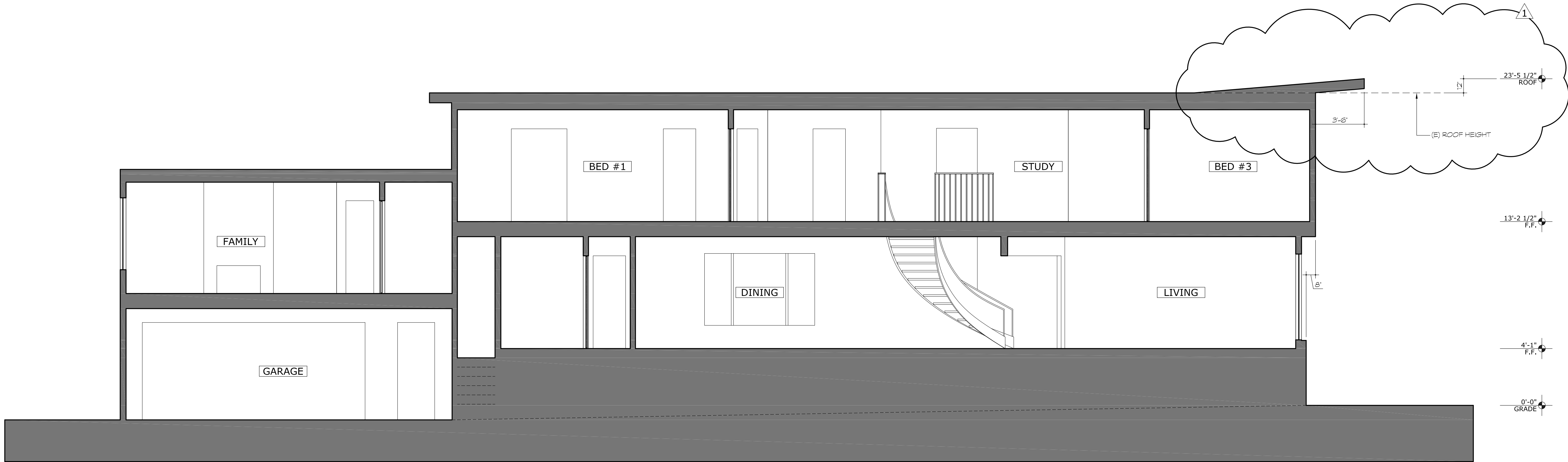
SHEET CONTENTS:  
SECTION

DateJAN 29, 2010

Scale1/4" = 1'-0"

By-

A4.1



SECTION

1