



SAN FRANCISCO PLANNING DEPARTMENT

MEMO

Disclaimer for Review of Plans

The San Francisco Planning Code requires that the plans of certain proposed projects be provided to members of the public prior to the City's approval action on the project. Accordingly, any images of plans featured on this website are provided for the primary purpose of facilitating public input prior to the City's action. The City and County of San Francisco does not own the copyright to these images. Please be aware that the unauthorized reproduction, distribution, or alteration of these images may result in a violation of Federal Copyright Law (17 U.S.C.A. Sections 101 et seq.) and that any party who seeks to reproduce or alter these images does so at his or her own risk.

Additionally, plans provided on this website are limited to site plans, elevations and/or section details (floor plans and structural details may not be included). These are DRAFT PLANS being provided for public review PRIOR to the City's approval action on the project. Final plans may differ from those that are currently available for review.

1650 Mission St.
Suite 400
San Francisco,
CA 94103-2479

Reception:
415.558.6378

Fax:
415.558.6409

Planning
Information:
415.558.6377



(E) SITE PLAN

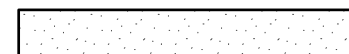
1/16"=1'-0"

BLOCK & LOT: 3590 - 031

PROPERTY LINE:

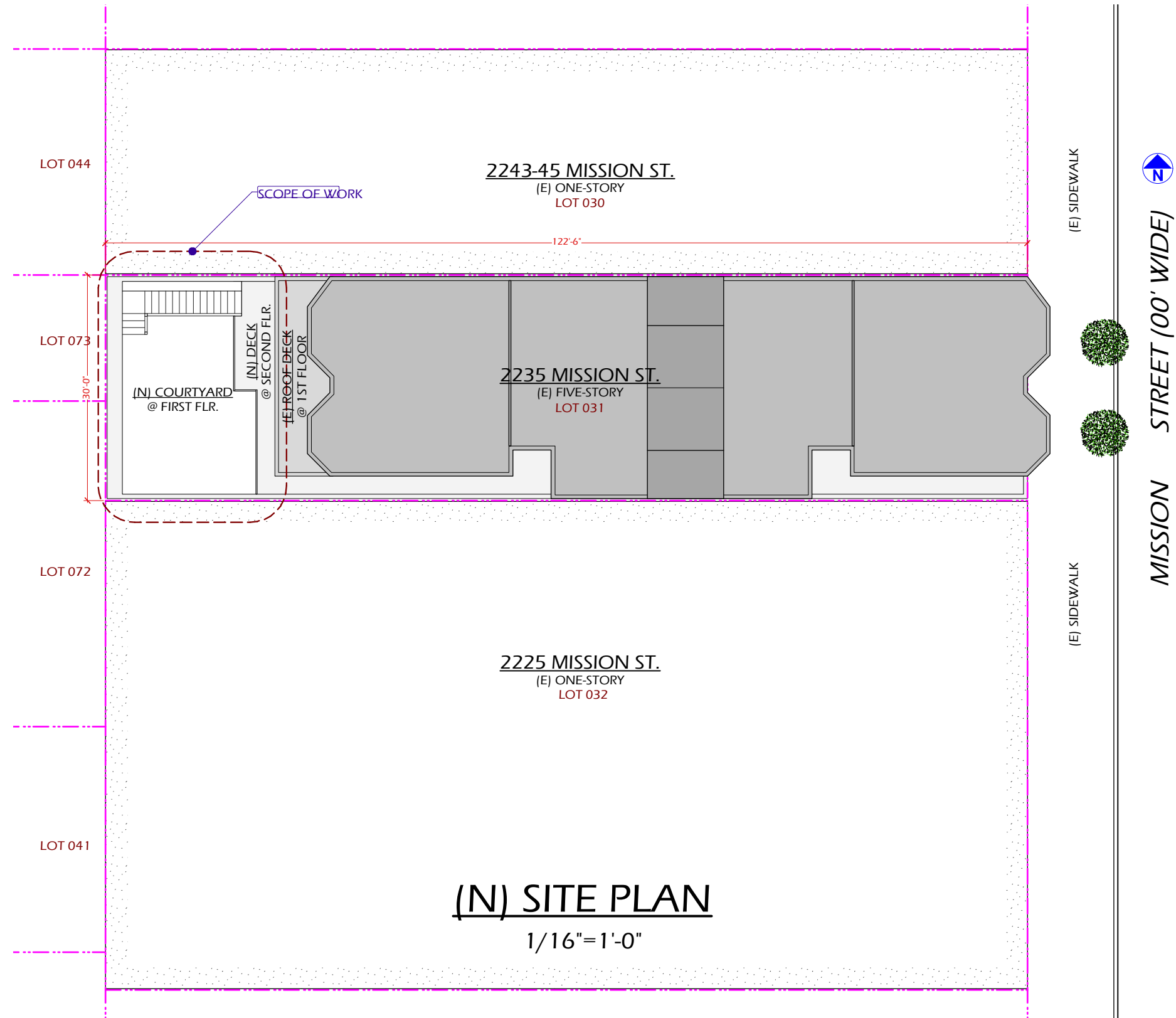


OUTLINE OF NEIGHBORS:



2235 MISSION ST.
SAN FRANCISCO, CA





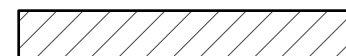
(N) SITE PLAN
1/16"=1'-0"

BLOCK & LOT: 3590 - 031

PROPERTY LINE:



OUTLINE OF NEIGHBORS:



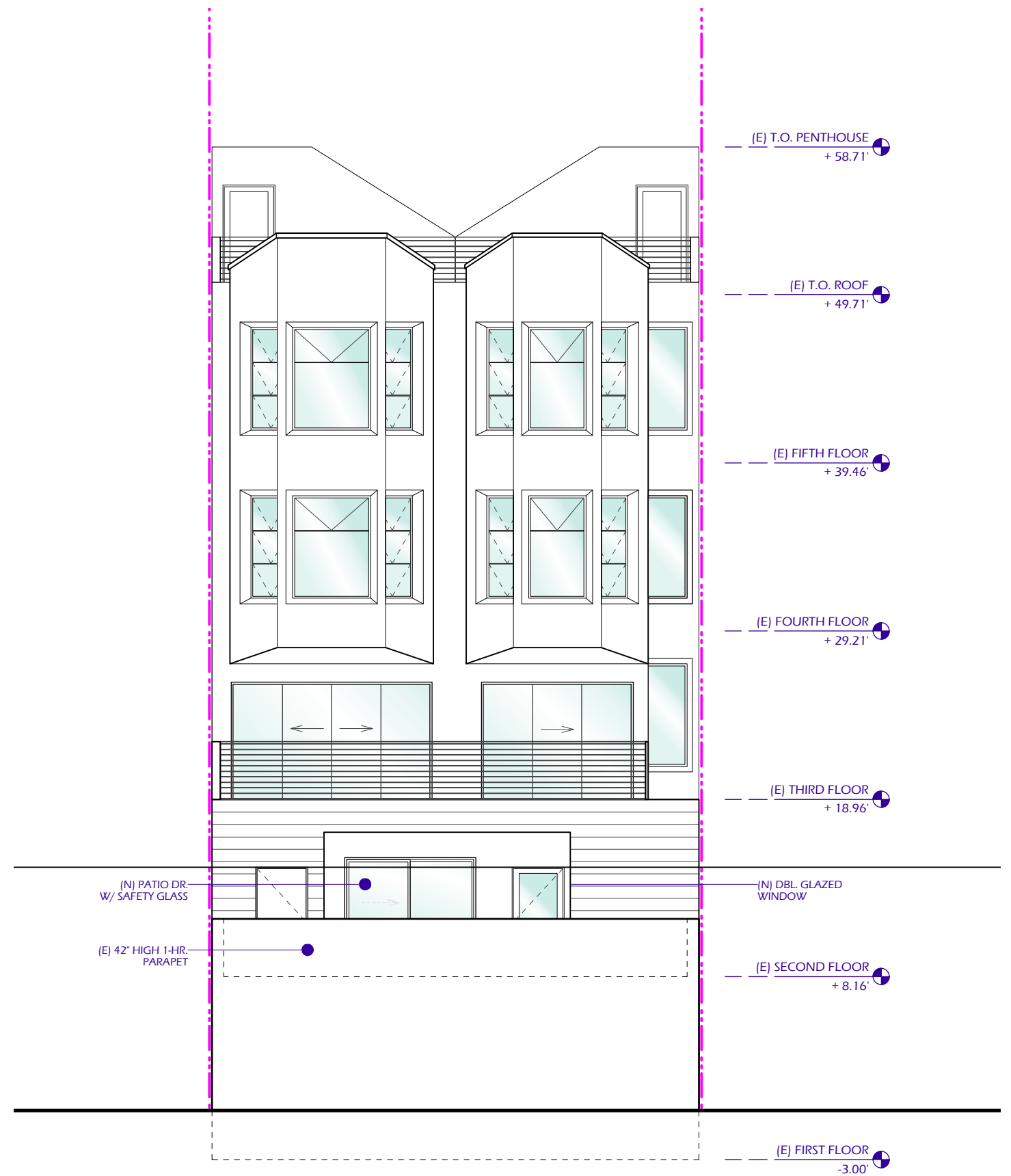
2235 MISSION ST.
SAN FRANCISCO, CA





(E) REAR ELEVATION

1/8 = 1'-0"

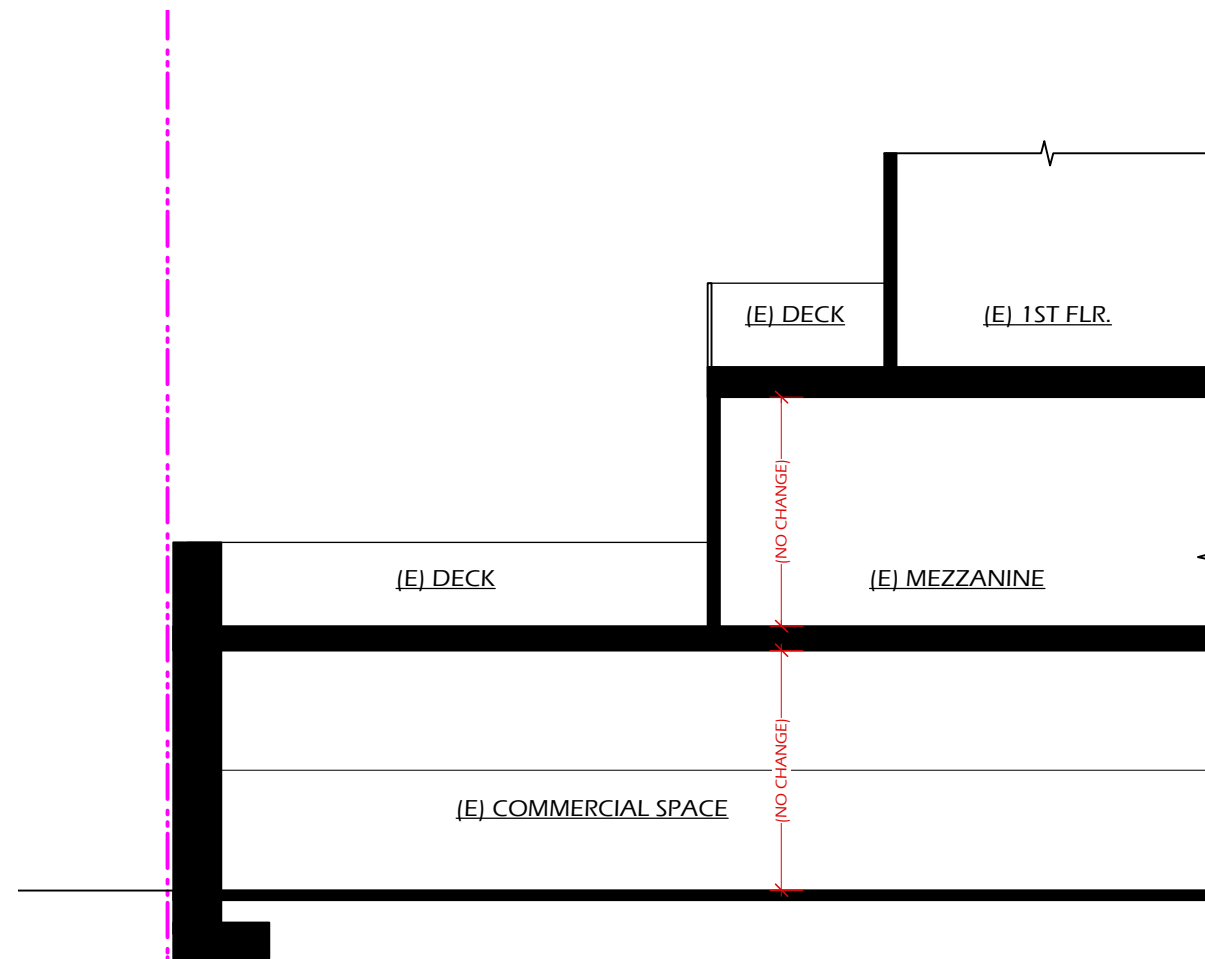


(N) REAR ELEVATION

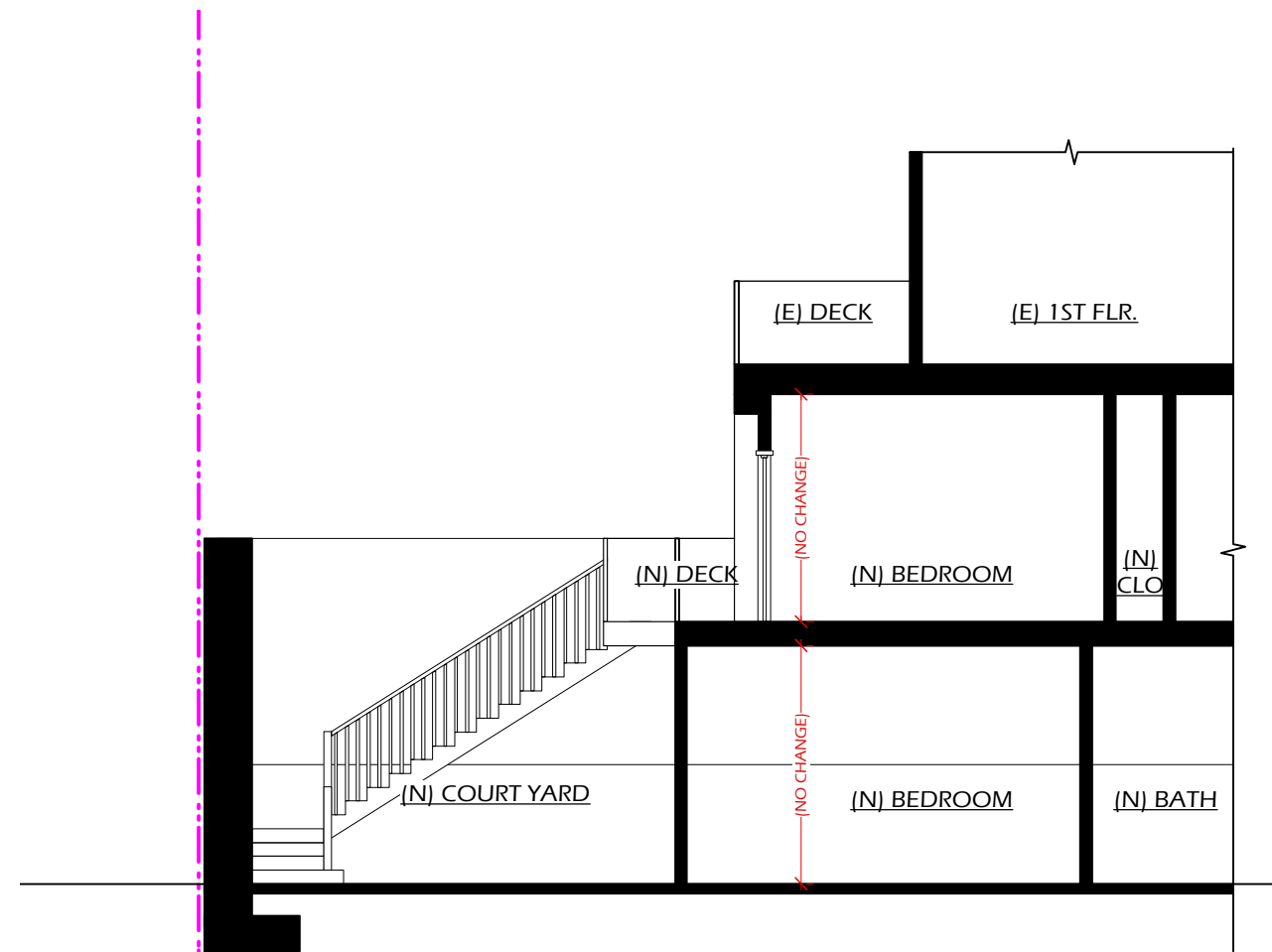
1/8 = 1'-0"

2235 MISSION ST.
SAN FRANCISCO, CA





(E) SECTION
1/8" = 1'-0"



(N) SECTION
1/8" = 1'-0"