



# **Eureka Valley Historic Context Statement**

Eureka Valley Neighborhood Association  
January 27, 2016

# What is a Historic Context Statement?



Historic Context  
Statement



Historic Resource  
Survey

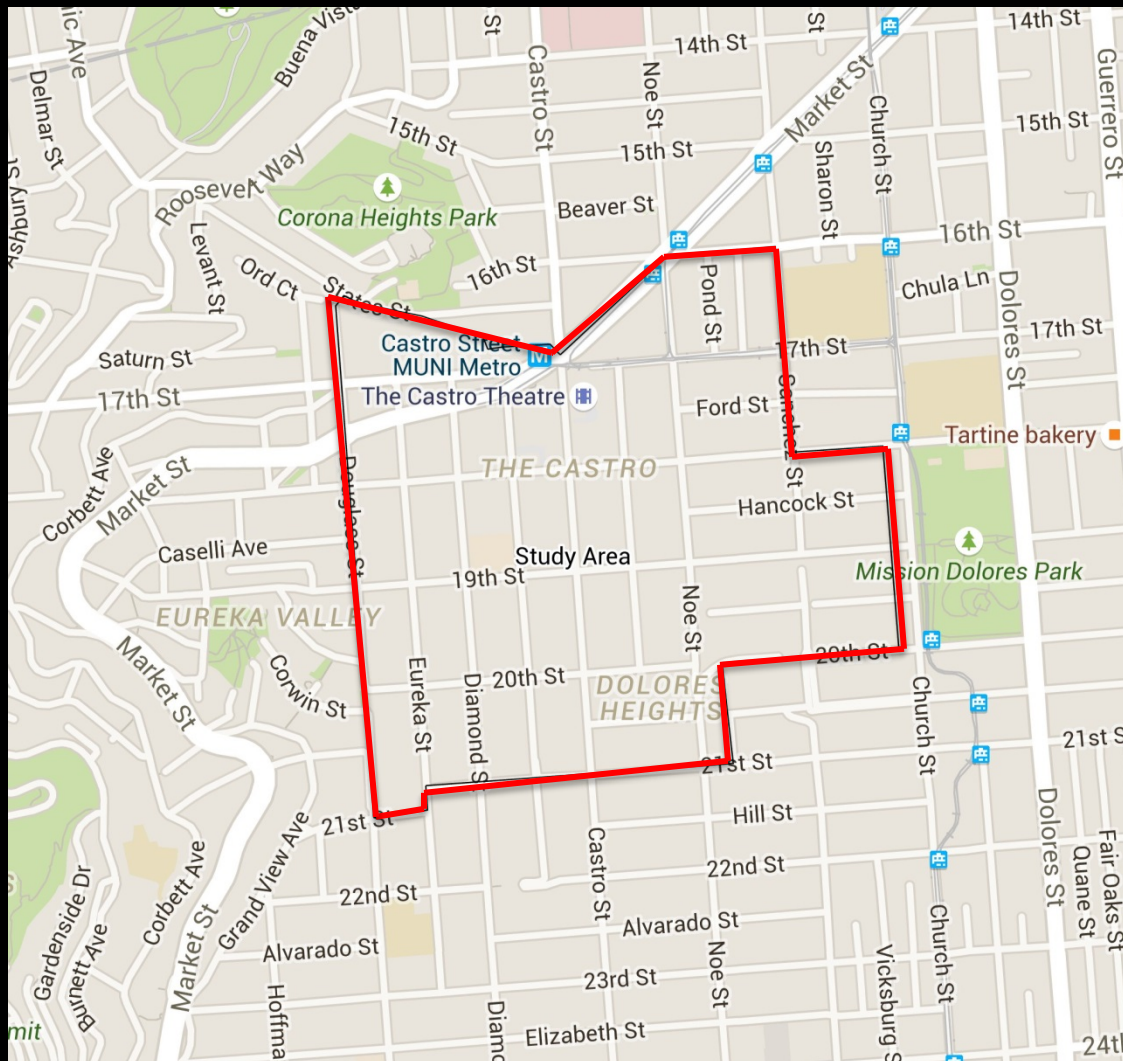


Historic  
Designation or  
Protection

# The Process



# Eureka Valley Study Area



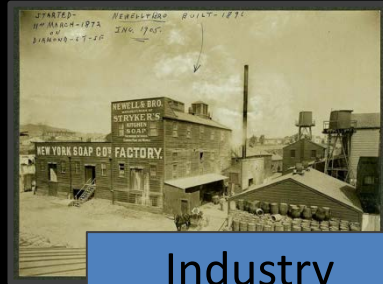
Study Period: Pre-European Settlement to 1974



# Eureka Valley Historic Contexts



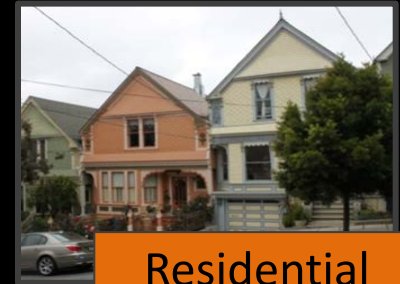
Agriculture



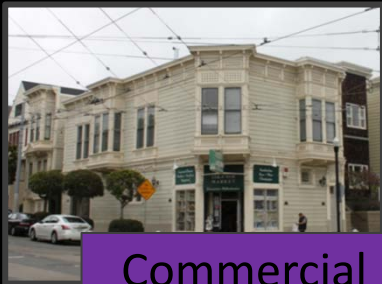
Industry



Land Division



Residential



Commercial



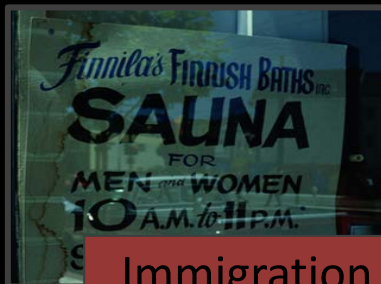
Civic



Religious



Transportation



Immigration



City Planning



LGBTQ

# Outcomes



A set of preservation goals and priorities



Identification of sites that might qualify for historic designation



Recommendations for future research and historic resource survey



A set of standards for evaluating property significance and eligibility requirements

---

# Benefits

Greater consistency in decision making regarding historic resources

---

Identification of historic resources for protection or designation

---

Foundation for more intensive survey and predictability for property owners regarding historic status

---

# How You Can Help

Your local knowledge  
of important places

---



What buildings and spaces  
you feel contribute to the  
historic character of the  
neighborhood

---

[eurekavalleyhistory@gmail.com](mailto:eurekavalleyhistory@gmail.com)