

INTERSECTIONS PEDESTRIAN SAFETY

16TH AND 24TH STREET INTERSECTIONS

The 16th and 24th intersections along Mission Street represent two major nodes with high volumes of pedestrians. People mostly use intersections to take transit or to walk to their destination after getting off transit. Reported high levels of pedestrian collision at these intersections highlight the need for pedestrian safety improvements. This board shows some examples of improvements..

Estas dos intersecciones en Mission Street representan dos nodos principales con un alto volumen peatonal. La gente las utiliza principalmente para tomar el transporte público o para caminar hacia su destino después de utilizar el transporte. Existen reportes sobre numerosos accidentes peatonales en estas intersecciones que destacan la necesidad de mejorar la seguridad de los peatones. Este cartel muestra algunos ejemplos de mejoras.

1 DECORATIVE CROSSWALKS AND INTERSECTIONS



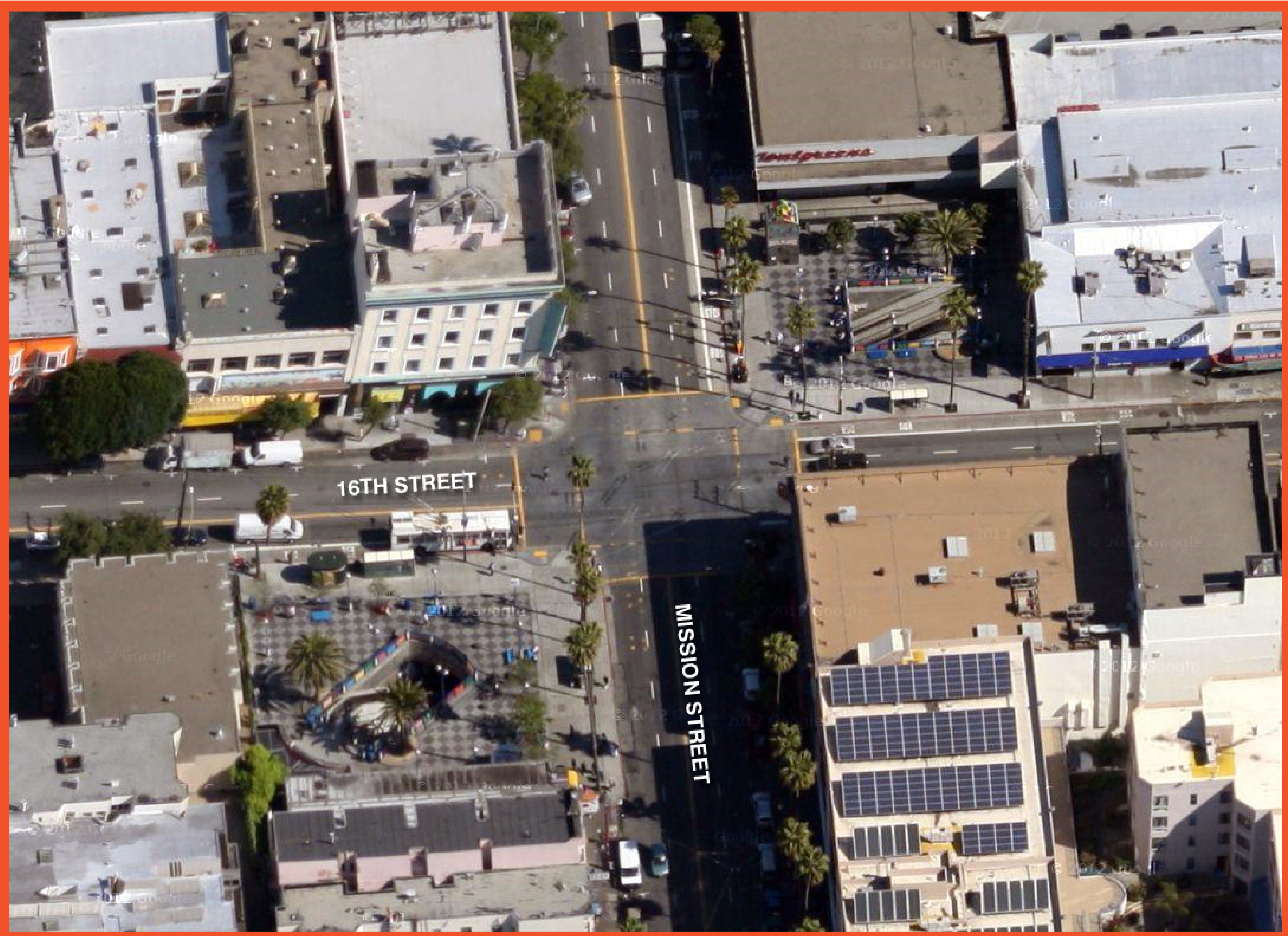
2 BULB-OUTS



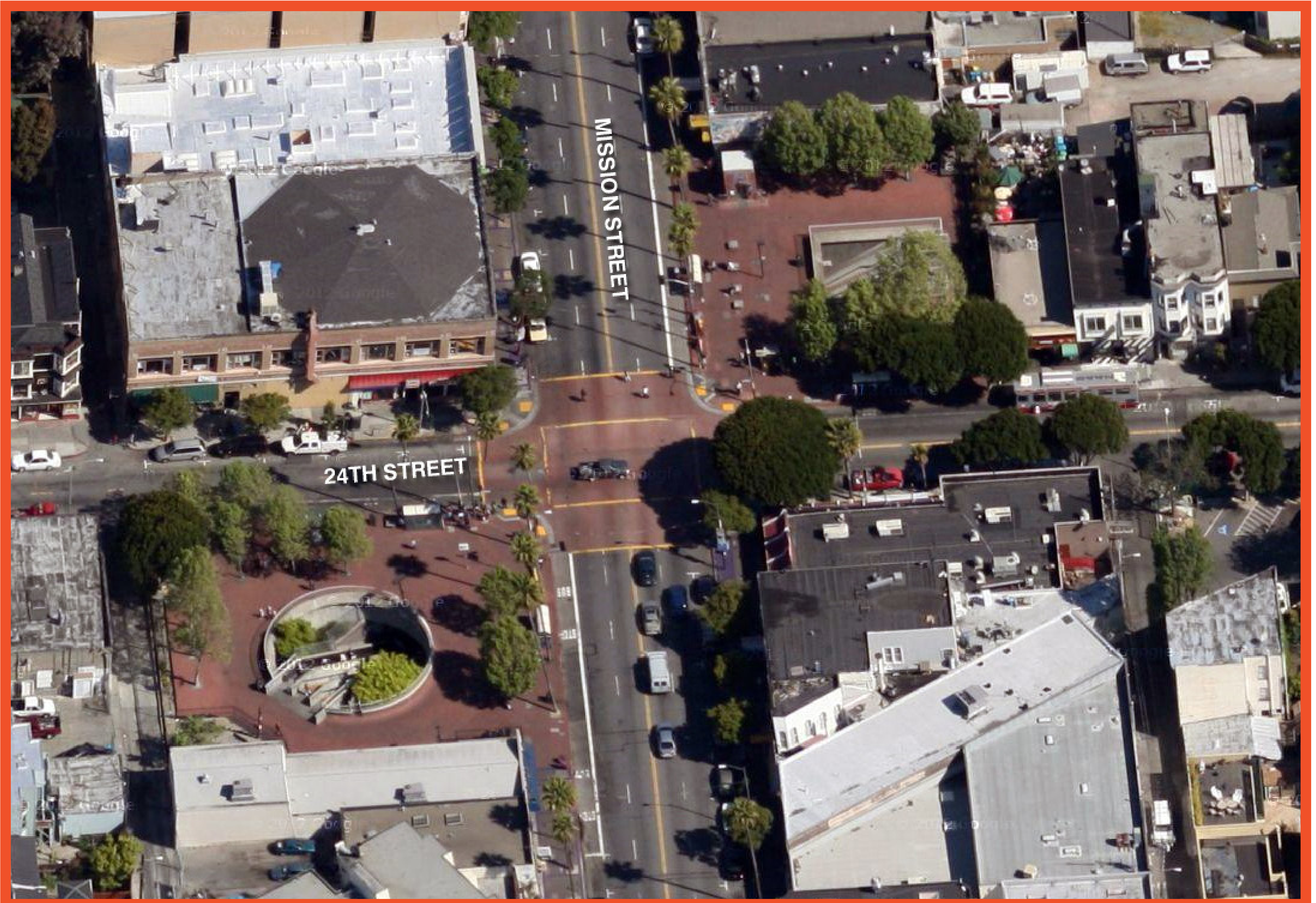
3 PEDESTRIAN SCRAMBLE



2 LEADING PEDESTRIAN INTERVAL SIGNAL



16TH ST & MISSION ST



24TH ST & MISSION ST

■ NON-FATAL PEDESTRIAN COLLISIONS
 COLISIÓN PEATÓN-VEHÍCULO (NO FATAL)
■ NON-FATAL BICYCLE COLLISIONS
 COLISIÓN BICICLETA-VEHÍCULO (NO FATAL)

SOURCE: SFMTA Vehicular Collision Data 04/01/2007 - 03/31/2012



<http://missionpublic.sfplanning.org>
WORKSHOP 3 | JANUARY 21, 2015

San Francisco Planning IN COLLABORATION WITH



Funded by the Environmental Justice Context-Sensitive Planning Program (2013) of the California Department of Transportation (Caltrans)