



**Connecting  
pedestrians, bicyclists,  
and critters to the City's  
green spaces.**

**<http://greenconnections.sfplanning.org>**

# Project Overview

- Green Connections will result in a Citywide network of **green streets** that can be built over time, improving access to parks, open space and the waterfront.
- Two-year planning process
  - Year 1: Citywide Focus
  - Year 2: Neighborhood Focus
- Improve Connections to Open Space
  - Public Health
  - Air Quality
  - Sustainability
  - Create Habitat
  - Economic Justice

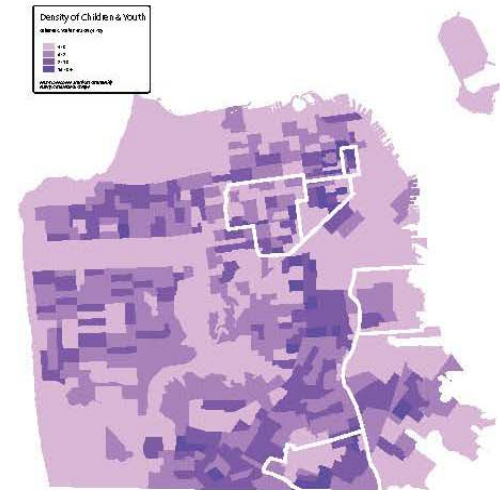
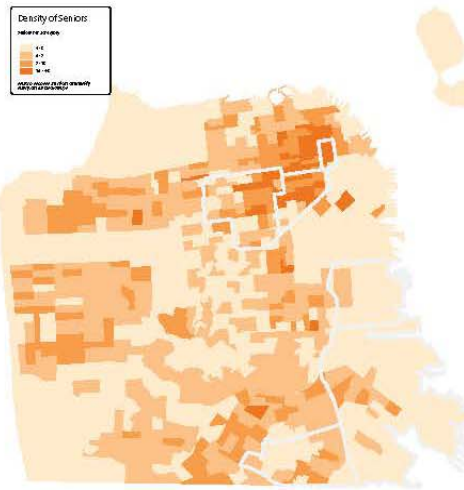
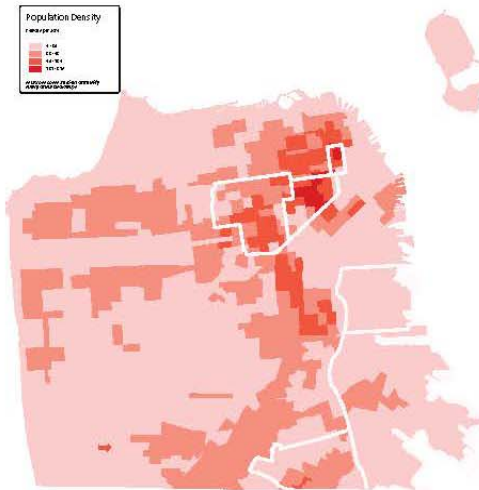
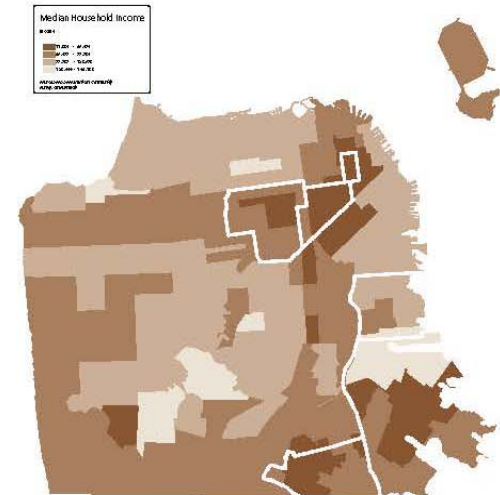
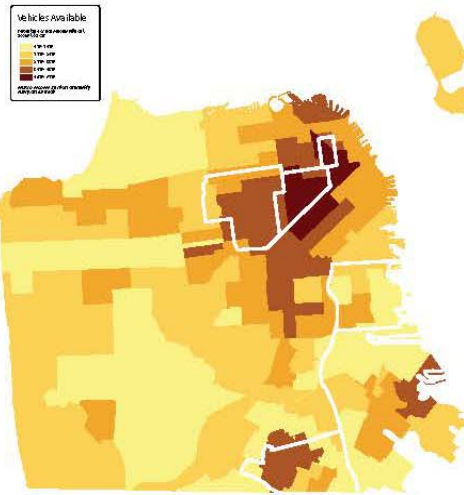
# Key Project Deliverables

- A Citywide map of Green Connections
- Green Connections Design Concepts
- Implementation Plan
- Conceptual Designs - Focus Neighborhoods



# Neighborhood Focus

- Bayview-Hunters Point
- Chinatown
- Potrero Hill
- Tenderloin
- Visitacion Valley
- Western Addition



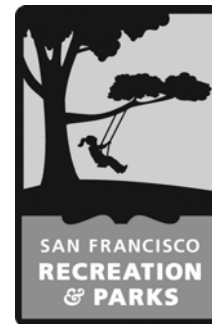


# Project Team

## City Agencies

SAN FRANCISCO  
**PLANNING DEPARTMENT**

**SFMTA** | Municipal Transportation Agency



SFDPH  
Environmental  
*improving environments  
protecting health*



## Community Partners



SAN FRANCISCO  
PLANNING DEPARTMENT



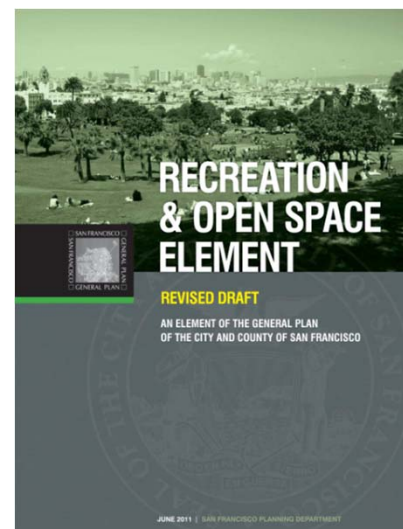
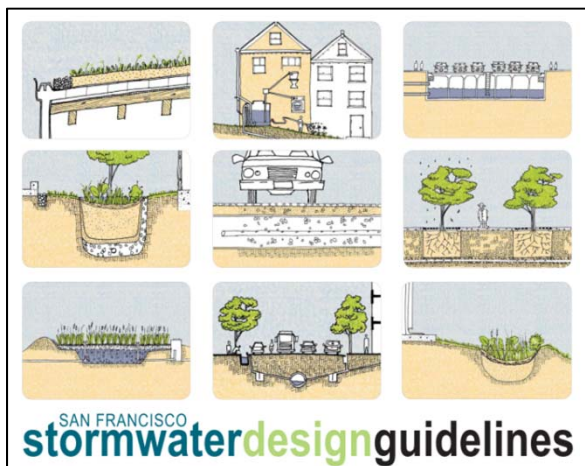
SFMTA | Municipal Transportation Agency



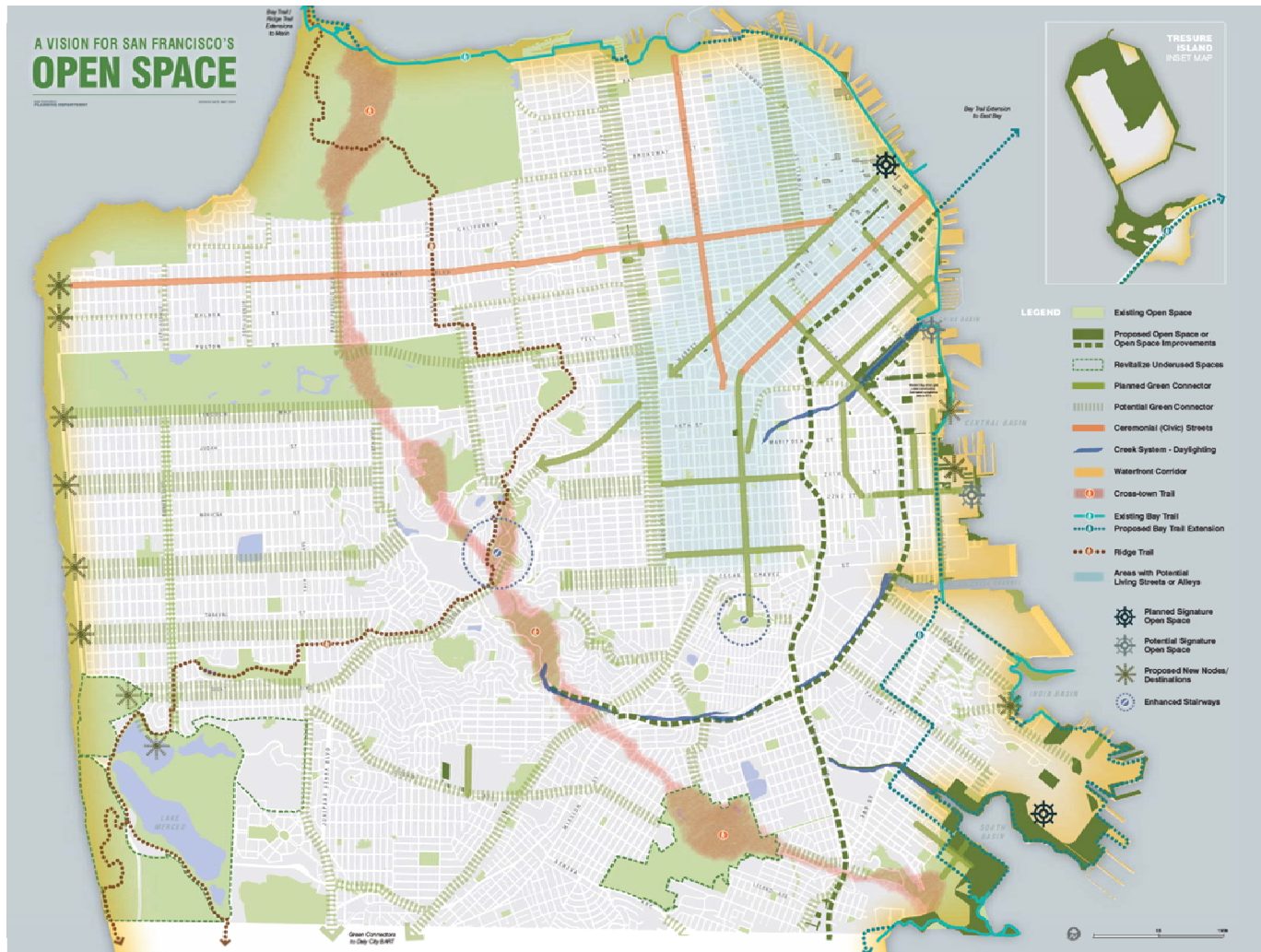
San Francisco  
Department of Public Health



# Building on Existing Plans and Policies

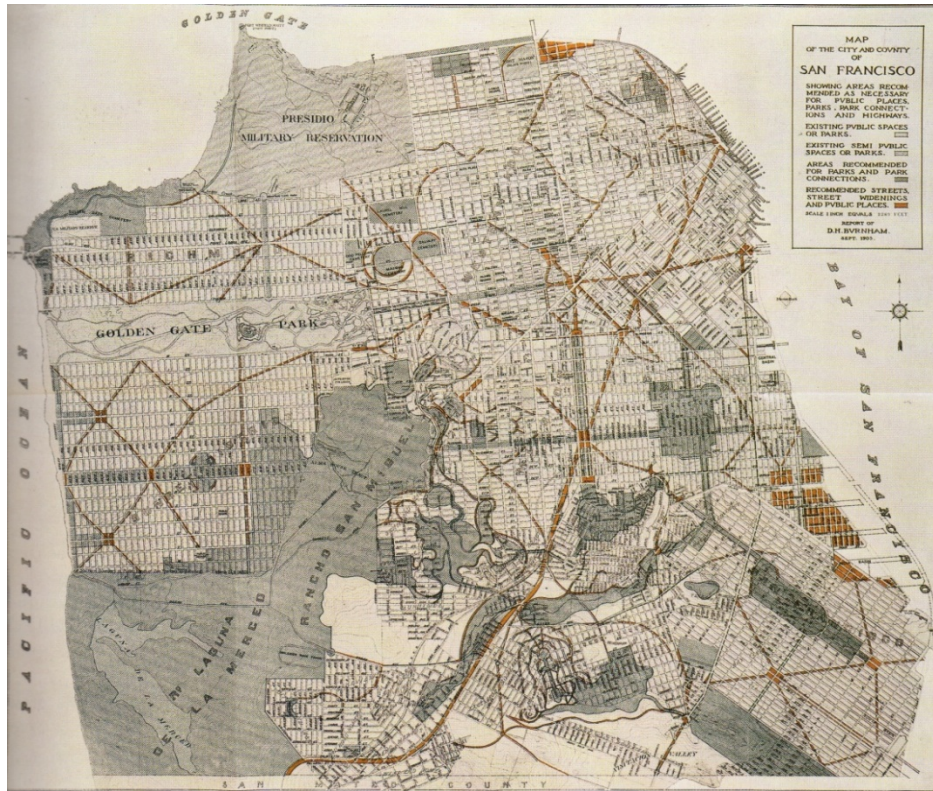


# A Vision for San Francisco's Open Space





# Previous ideas for 'Green Connections'



**Burnham Plan, 1906**



**David Arbogast , 1953**



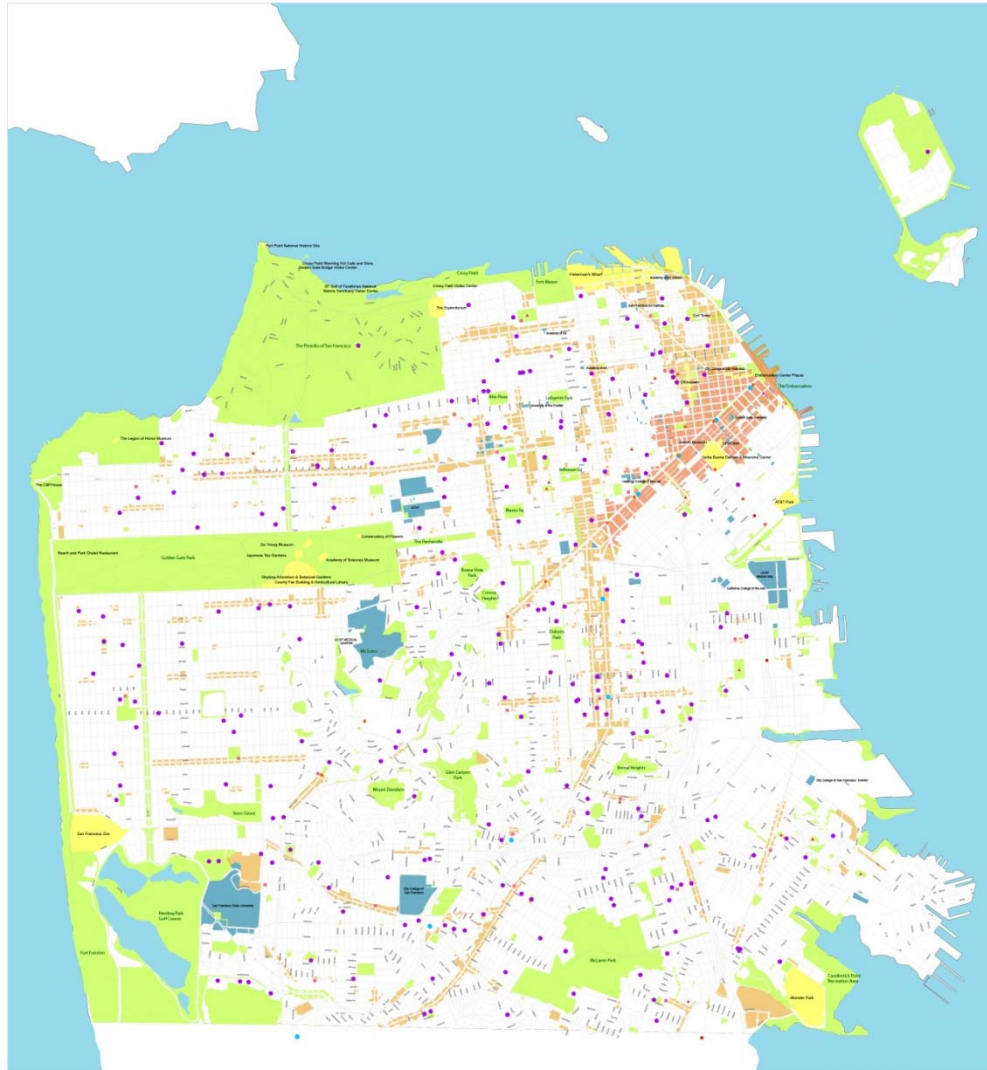
# Corridors/Paths/Movement: The Routes People Take



## Legend

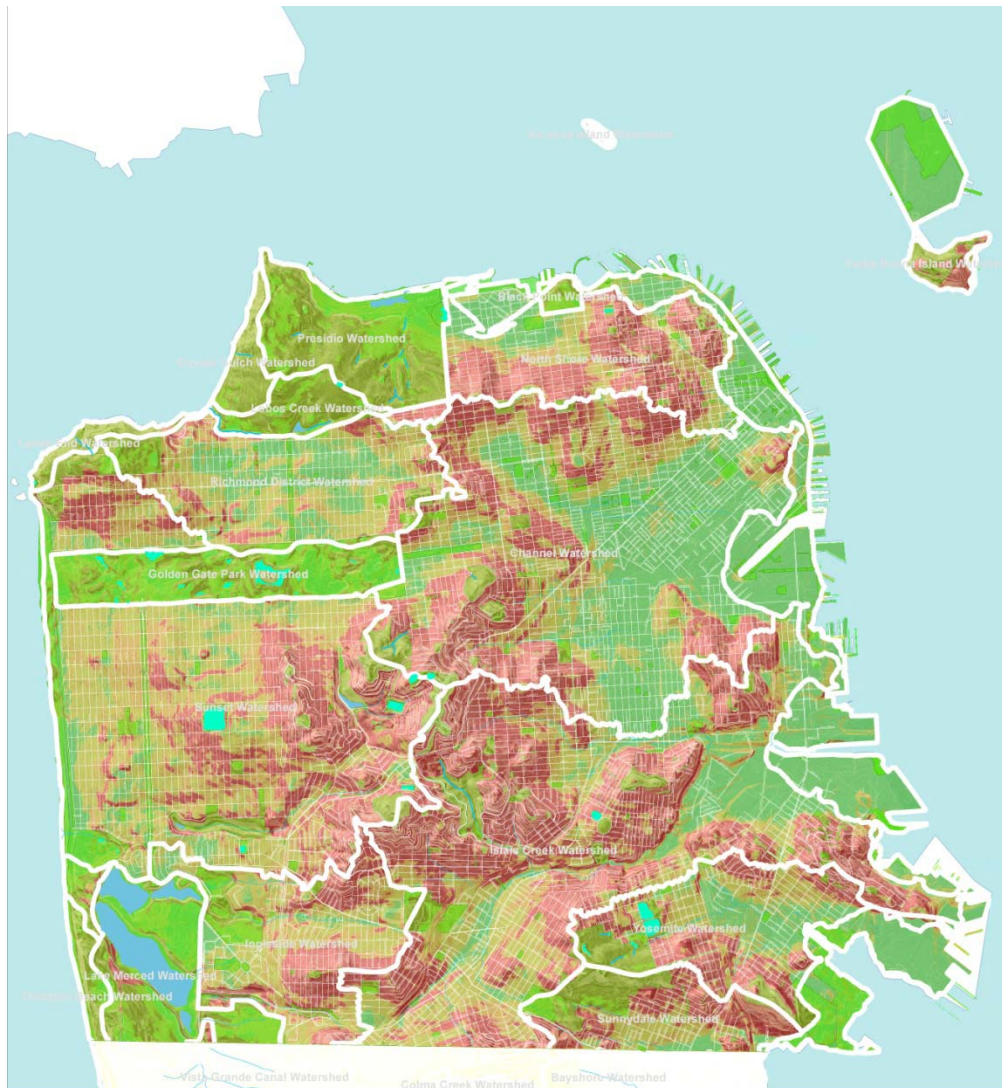
- Trails (Existing and Planned)
- Key Walking Streets Identified in WalkFirst Study (Draft)
- Alleys
- Paseos (Pedestrian-only streets & staircases per the Better Streets Plan)
- ... Bike Network (Existing and Planned)
- Parkways (Streets with large green medians per the Better Streets Plan)
- Park Edge Streets (Per the Better Streets Plan)
- Parks and Open Space

# Nodes/Places/Destinations: Where people go



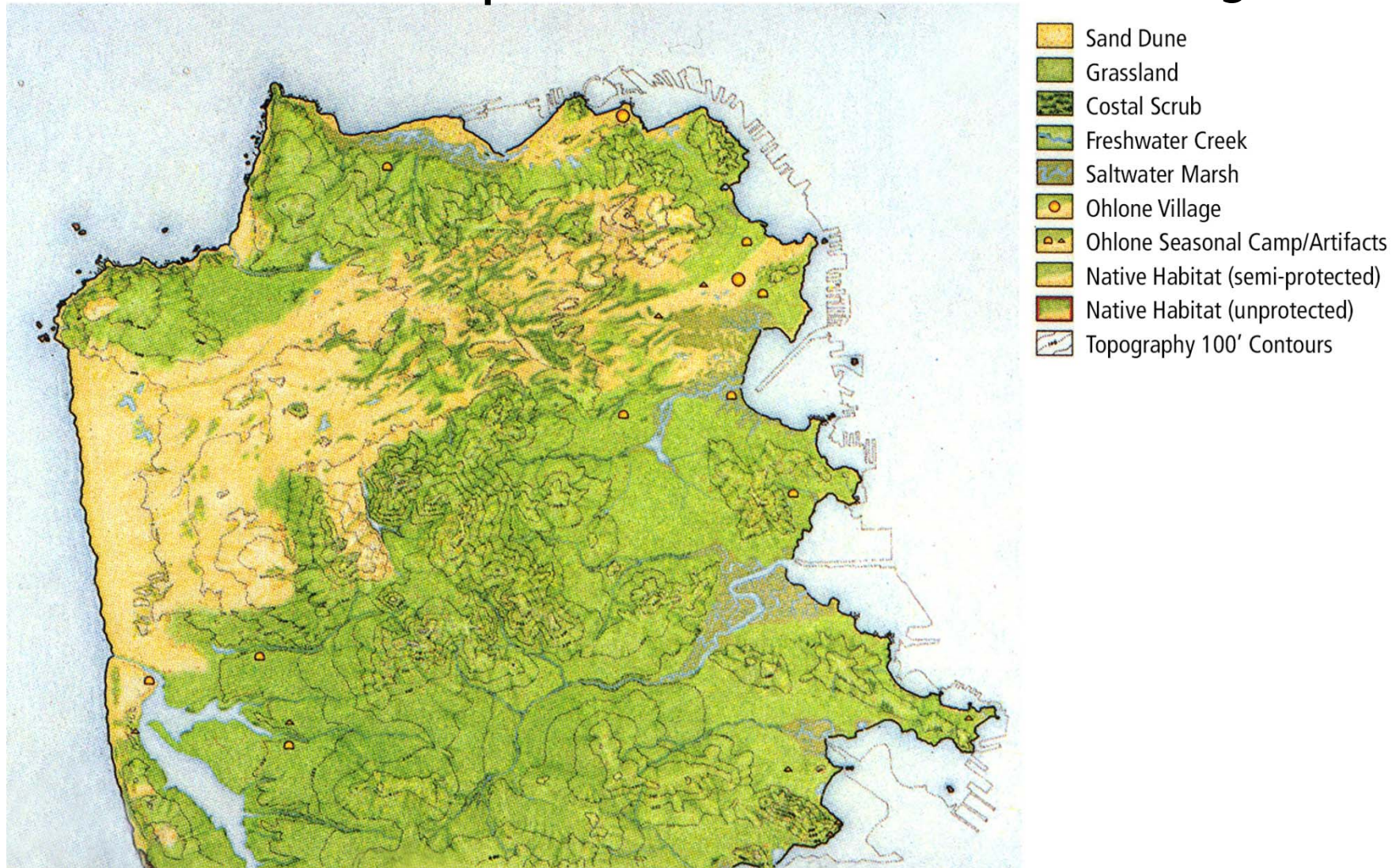
## Legend

- ▲ Community Centers
- Public Schools
- Libraries
- MUNI Metro Stops
- Caltrain Stops
- BART Stops
- Colleges and Universities
- Popular Tourist Sites
- Downtown Commercial Zoning Districts
- Neighborhood Commercial Zoning Districts
- Parks and Open Space





# Historic Landscapes/Natural Areas: Enhancing Habitat





# Qualities of Green Connections



Planted Median, Montgomery Avenue



Sidewalk Landscaping, Divisadero Street



Sidewalk Landscaping, Divisadero Street



Permeable Paving & Sidewalk Landscaping, Divisadero Avenue



Stormwater retained on-site, Mint Plaza



Permeable Sidewalk, 22nd Street

## Habitat

## Stormwater



Wide Sidewalk, Ross Street



Traffic Calming, Divisadero



Converted post-and-rail median, Broadway



Enhanced Bike Lane, Fillmore Street



Stairway, Montgomery Avenue



Pedestrian & Bicycle Path, Panhandle

## Traffic Calming

## Prioritize Pedestrians & Bicycles

# Informing the 'Green Connections' network

## Green Connections: HOW DO YOU ENVISION A GREEN CONNECTION?

*Are people walking or biking?*

*Are cars moving fast or slow or not at all?*

*Is there landscaping, trees or sidewalk gardens?*

*Are there birds, butterflies or other animals?*

*Are kids playing?*

*Do you feel safe, calm, playful?*

Tell us how you envision a **green connection** . . .



Panhandle Park, San Francisco California



Crissy Field, San Francisco California



Third Street (during Sunday Streets), San Francisco CA



The High Line, New York City



Elliot Bay Trail, Seattle Washington



Crown Street, Vancouver Canada



Civic Center Farmer's Market, San Francisco California



# Informing the 'Green Connections' network




- What is your favorite park to visit?
- What do you like about your route?

# Next Steps

- Develop ideal scenarios (April – June 2012)
  - Pedestrians
  - Bicycles
  - Habitat
  - Stormwater
- Synthesize ideal scenarios: circulate a draft Green Connections map and design concepts (target: Summer/Fall 2012)
- Develop design concepts in 6 focus neighborhoods (Winter 2012 - Spring 2013)
- Finalize: map, design concepts and implementation document (Fall 2013)

# Stay Involved

## Follow us online

- Green Connections Website  
<http://greenconnections.sfplanning.org>
- How can the City help you improve your path to the park?  
**Take our survey!**
- Sign up to receive updates and public meeting announcements by email.
- Follow Green Connections on 

## Participate in outreach events

- Walks & tours
- Office Hours in 6 neighborhoods
- Talk to us at Sunday Streets



# Discussion Questions

Goal: develop an ideal pedestrian network

- What qualities characterize this network?
- Do you have ideas for potential corridors?
- What are the physical treatments that could support this network?