

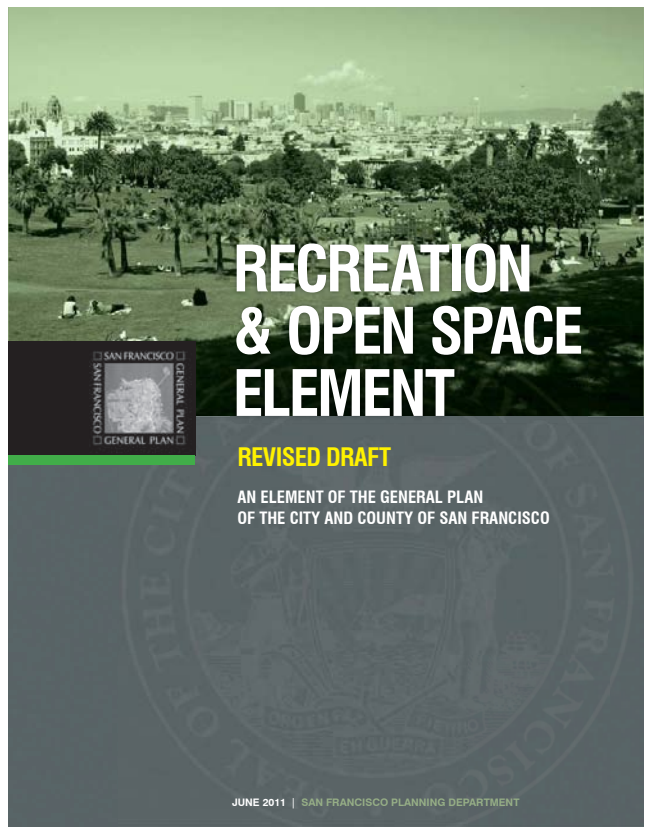


IMPLEMENTATION OF PROJECT AND IMPROVEMENTS



The project team will develop a 20-year implementation plan for Green Connections. Over the next year the team will work to develop implementation strategies in collaboration and coordination with city agencies and community partners.

HOW COULD GREEN CONNECTIONS BE INCORPORATED INTO EXISTING CITY DOCUMENTS AND PROCESSES?



GENERAL PLAN

The City's General Plan serves as a basis for decisions that affect all aspects of our everyday lives including how we get to parks and how we maintain our streets. It is both a strategic and long term document, broad in scope and specific in nature. It is implemented by decisions that direct the allocation of public resources and that shape private development. In short, the General Plan is the embodiment of the community's vision for the future of San Francisco.

The Green Connections network could be incorporated into the Recreation and Open Space Element (ROSE) and the Transportation Element. Inclusion in the General Plan empowers the Green Connection network to influence projects and policies generated by all City agencies. For example, should SFMTA propose streetscape improvements to a street on the network, proposals would need to be on balance and consistent with the Green Connections. Inclusion in the General Plan requires approval by the Planning Commission, Board of Supervisors, and Mayor.



CITY'S CAPITAL PLAN

The Capital Plan recommends projects based on the availability of funding from various sources and the relative priority of each project. Programs that serve the general public (such as streets and fire stations) rely primarily on funding from the City's General Fund and debt financing programs.

The Green Connections network could be incorporated into the Capital Plan as an emerging need that is unfunded. Decision makers, implementing agencies, and the Capital Planning Committee could consider Green Connections projects for funding as part of the budget process.



BETTER STREETS PLAN

The Better Streets Plan creates a unified set of standards, guidelines, and implementation strategies to govern how the City designs, builds, and maintains its pedestrian environment. The Plan seeks to balance the

needs of all street users, with a particular focus on the pedestrian environment and how streets can be used as public space. The Plan reflects the understanding that the pedestrian environment is about much more than just transportation – that streets serve a multitude of social, recreational and ecological needs that must be considered when deciding on the most appropriate design.

The Green Connections project could be included as an additional street typology in the Better Streets plan. As the city pursues infrastructure work on streets on the Green Connections Network the Better Streets Plan would link planners and engineers to the Green Connections design toolkit.



Community members planting a habitat garden for the Green Hairstreak, an endangered butterfly that lives in San Francisco. Photo: Nature in the City

COMMUNITY TOOLKIT

Community members can access all the documents discussed above, however there could be a toolkit specifically for community members.

DISCUSSION

What information or resources would be most valuable to Community members advocating for or implementing a Green Connection?

Are there other existing City policies, plans or programs that could include Green Connections?

HOW COULD A GREEN CONNECTION BE IMPLEMENTED?

COMMUNITY LED INTERVENTIONS

Green Connections projects could be initiated by community groups. Community groups can design, build and/or maintain Green Connections interventions.



Guerrero Planting, San Jose Avenue at Guerrero and 28th Streets, Median Greening & Community Stewardship



Mission Community Market, Placemaking and Farmers Market



Shotwell Street and 17th Street, Sidewalk Greening & Community Stewardship

NEIGHBORHOOD & CITY PARTNERSHIPS

Green Connections projects could be implemented through partnerships between community members and City Agencies.



Newcomb Streetscape Improvement Project: Residents of the 1700 Block of Newcomb Avenue, in coordination with the Department of Public Works, San Francisco Redevelopment Agency and Planning Department designed and implemented a streetscape improvement project that included stormwater management, greening and additional public space.



CITY LED COMPLETE STREETScape DESIGNS

Green Connections could be designed and implemented through City led community based planning processes. In this instance, City agencies would design and build the improvements based on community input.



Leland Avenue Streetscape Improvement Project, Department of Public Works, San Francisco Redevelopment Agency and the Planning Department



HOW MUCH FUNDING IS NECESSARY TO COMPLETE THE GREEN CONNECTIONS NETWORK?

The project team will develop high level cost estimates to implement the Green Connections network. The cost estimate will assume minimal intervention for the entire network, standard interventions for a significant portion of the network and demonstration level interventions for a small portion of the network.

Based on the cost estimate, the Green Connections team will develop a funding plan which will consider:

Funding sources such as the Community Challenge Grant and other public infrastructure grants; and coordination with other infrastructure projects such as traffic calming, street paving, sewer work, and other projects.

HOW WILL THE 140 PLUS MILES OF GREEN CONNECTIONS BE PRIORITIZED OVER THE 20 YEAR IMPLEMENTATION PERIOD?

- Coordination with city other projects such as the Capital Plan and the Sewer System Improvement Program
- Community generated ideas and community support

DISCUSSION

In thinking about the costs of the Green Connections network, would you rather see a minimal intervention for a larger network, or demonstration level projects on fewer blocks?

How can the City best partner with community organizations to facilitate the implementation of a Green Connection? Do you have a vision of a green Connection in your neighborhood? What role would you like to play in moving that forward?



NEXT STEPS: YEAR TWO

Year two of the Green Connections project will have two major components: A refinement of the draft network and design toolkit which apply citywide, and a community planning process for streetscape designs in six neighborhoods.

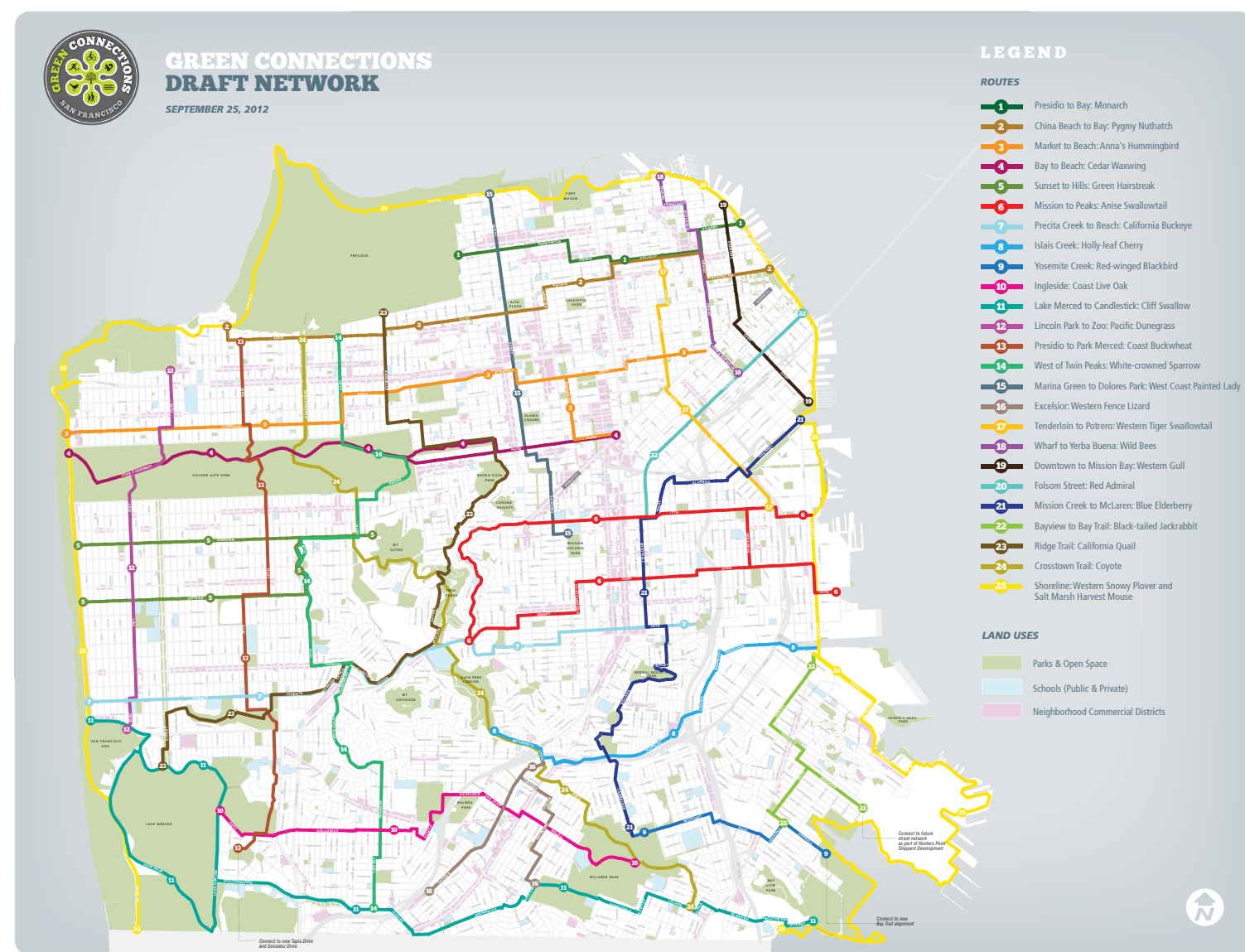
CITYWIDE GREEN CONNECTIONS NETWORK & DESIGN TOOLKIT

NEXT STEPS

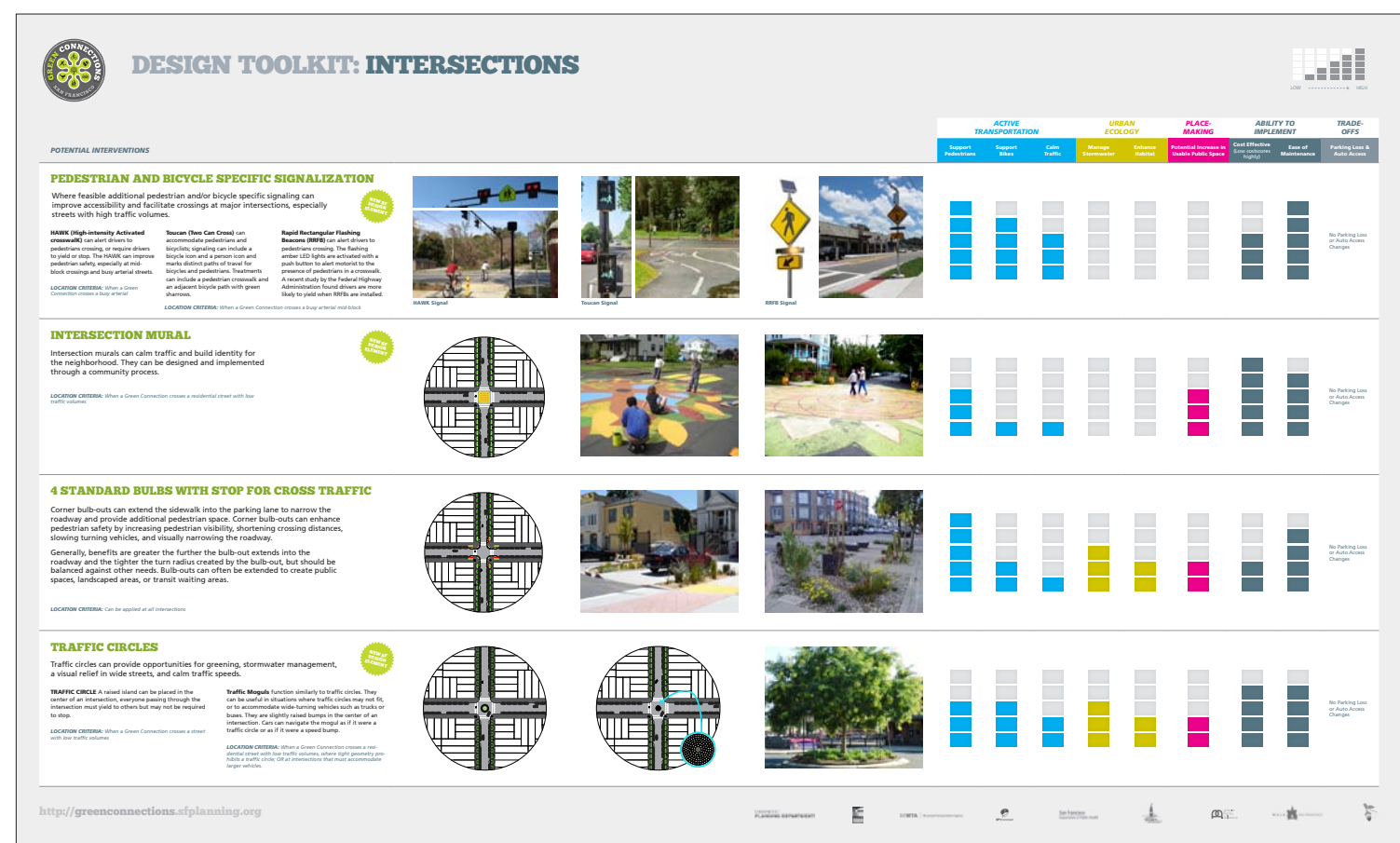
- Collect public feedback through **January 2013**
- Revise the draft documents by **May 2013**
- Develop a planting palette which includes climate appropriate plants that enhance urban ecology **August 2013**
- Complete transportation analysis by **August 2013**
- Develop an implementation document by **August 2013**



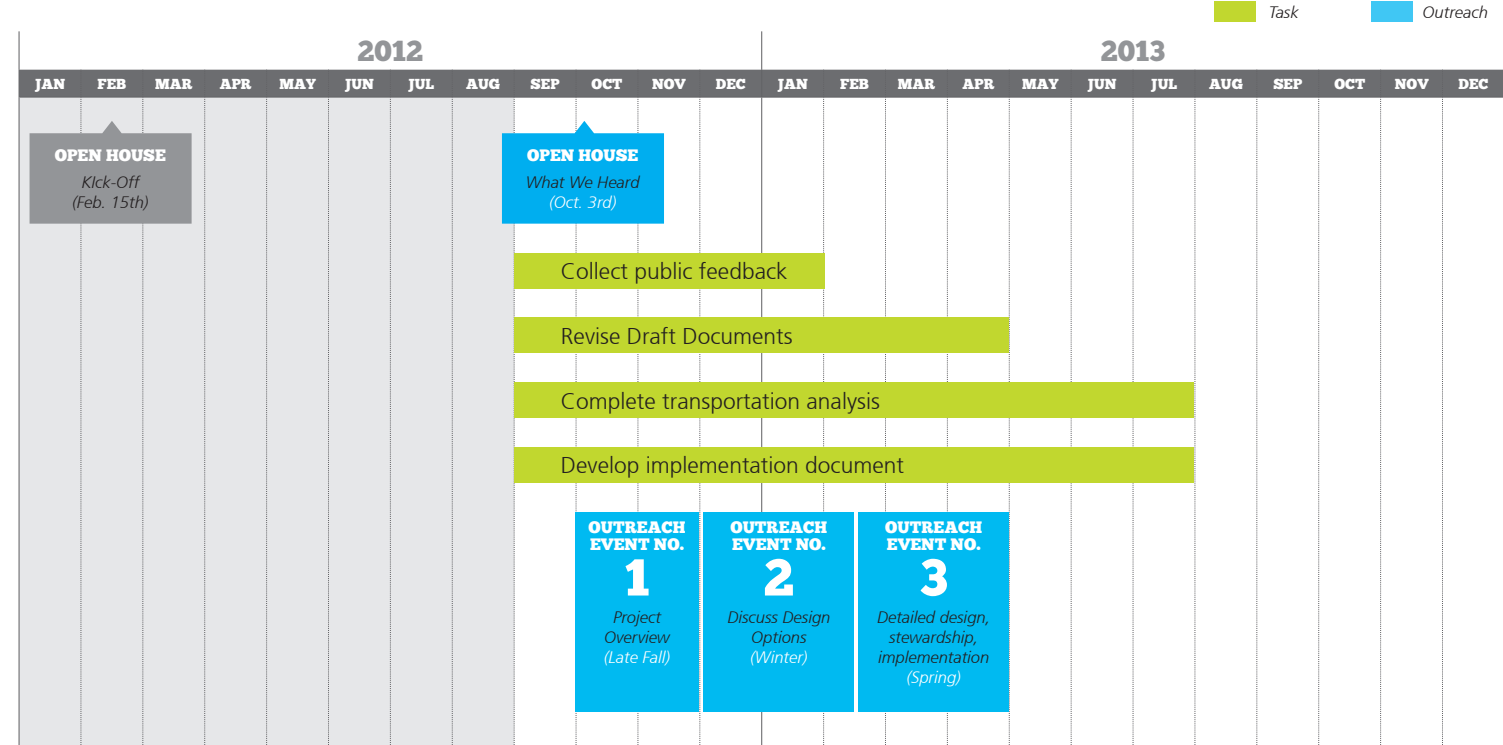
DRAFT NETWORK



DESIGN TOOLKIT



PROJECT TIMELINE: PHASE II

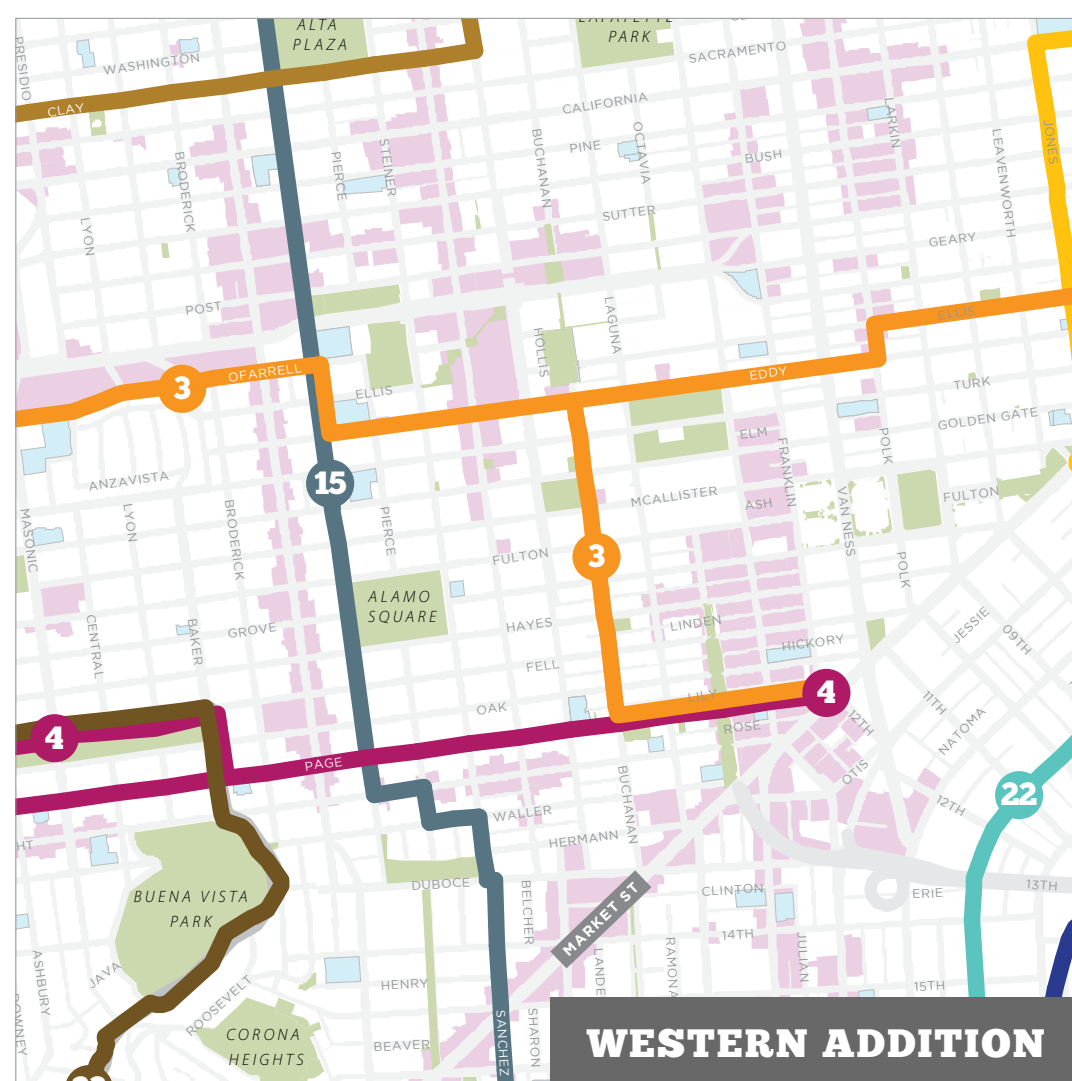
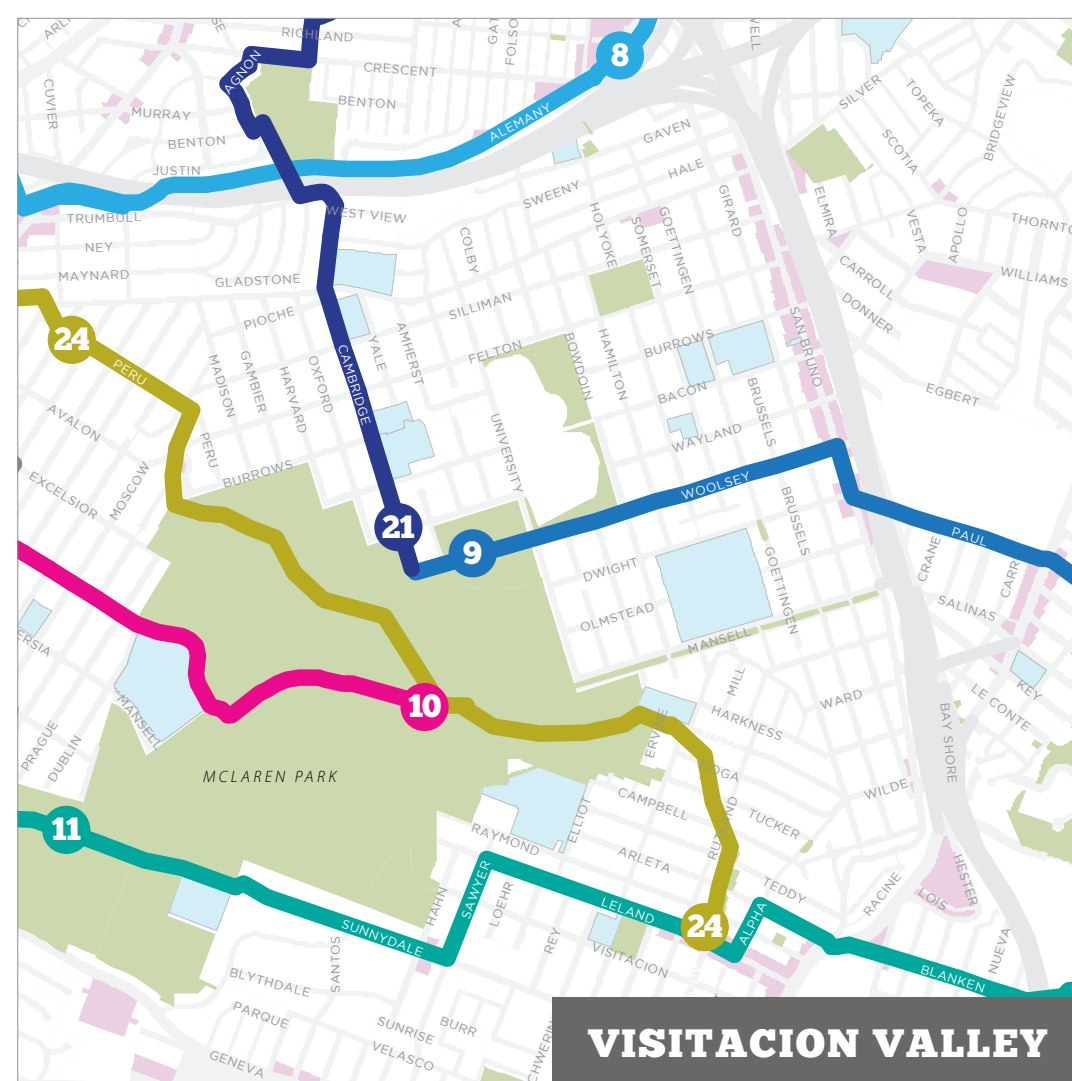
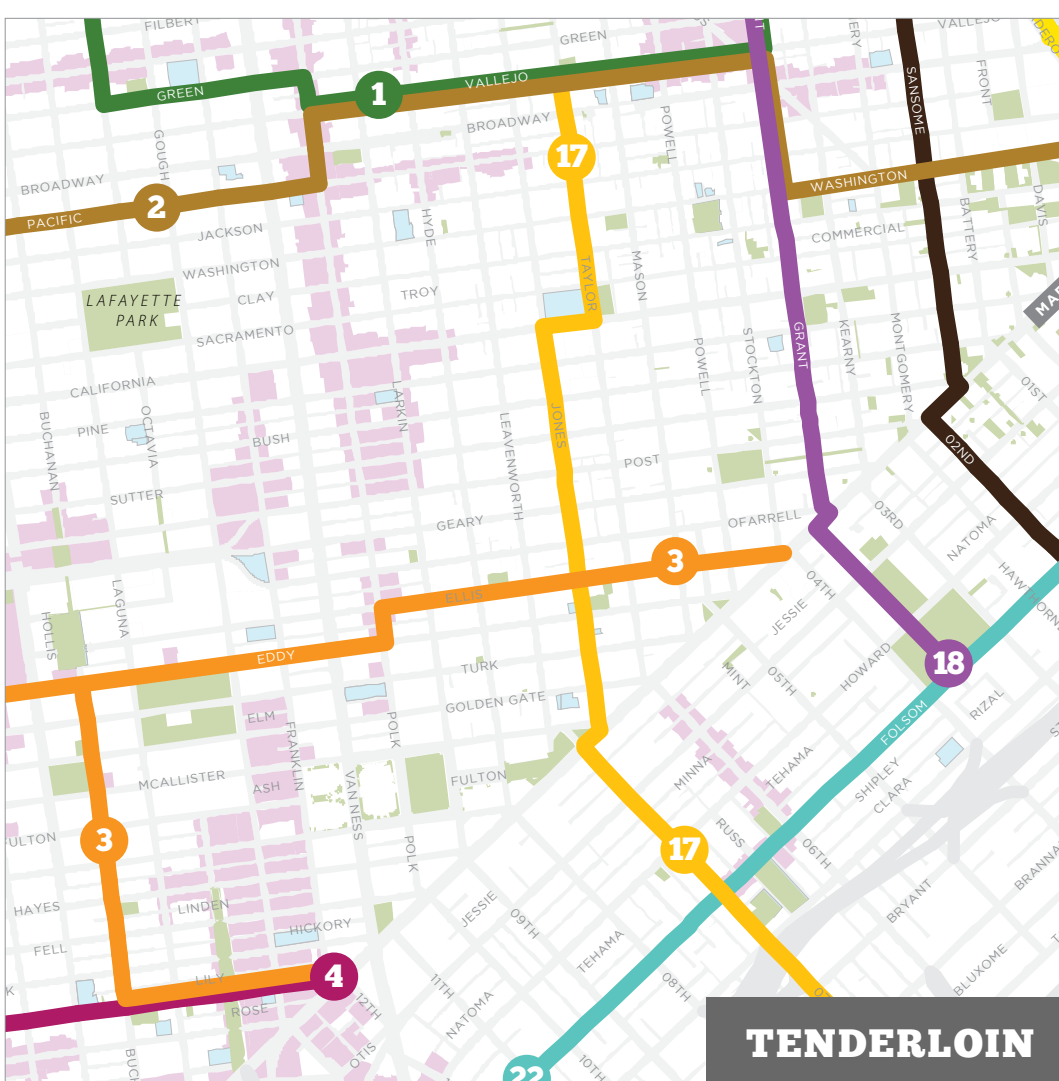
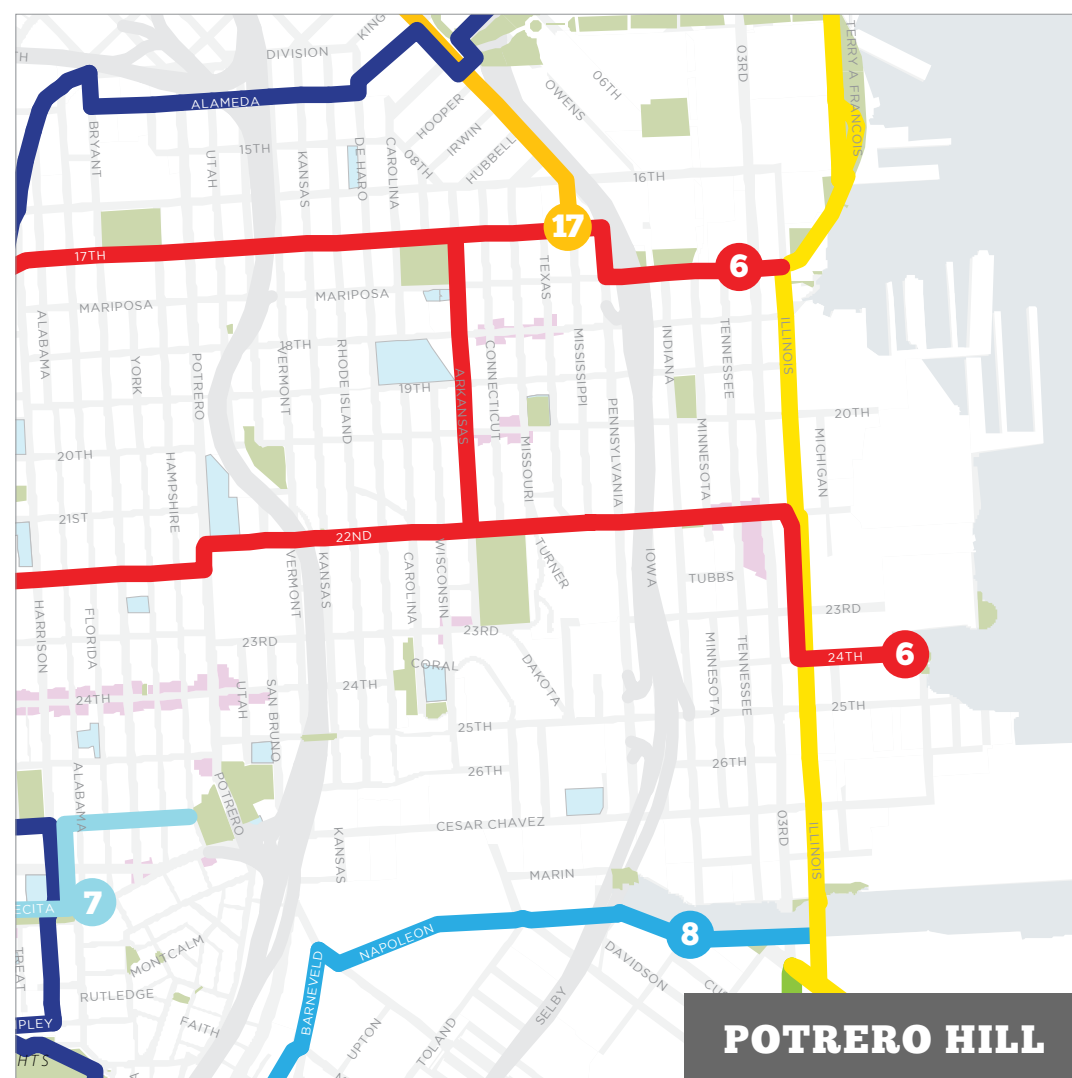
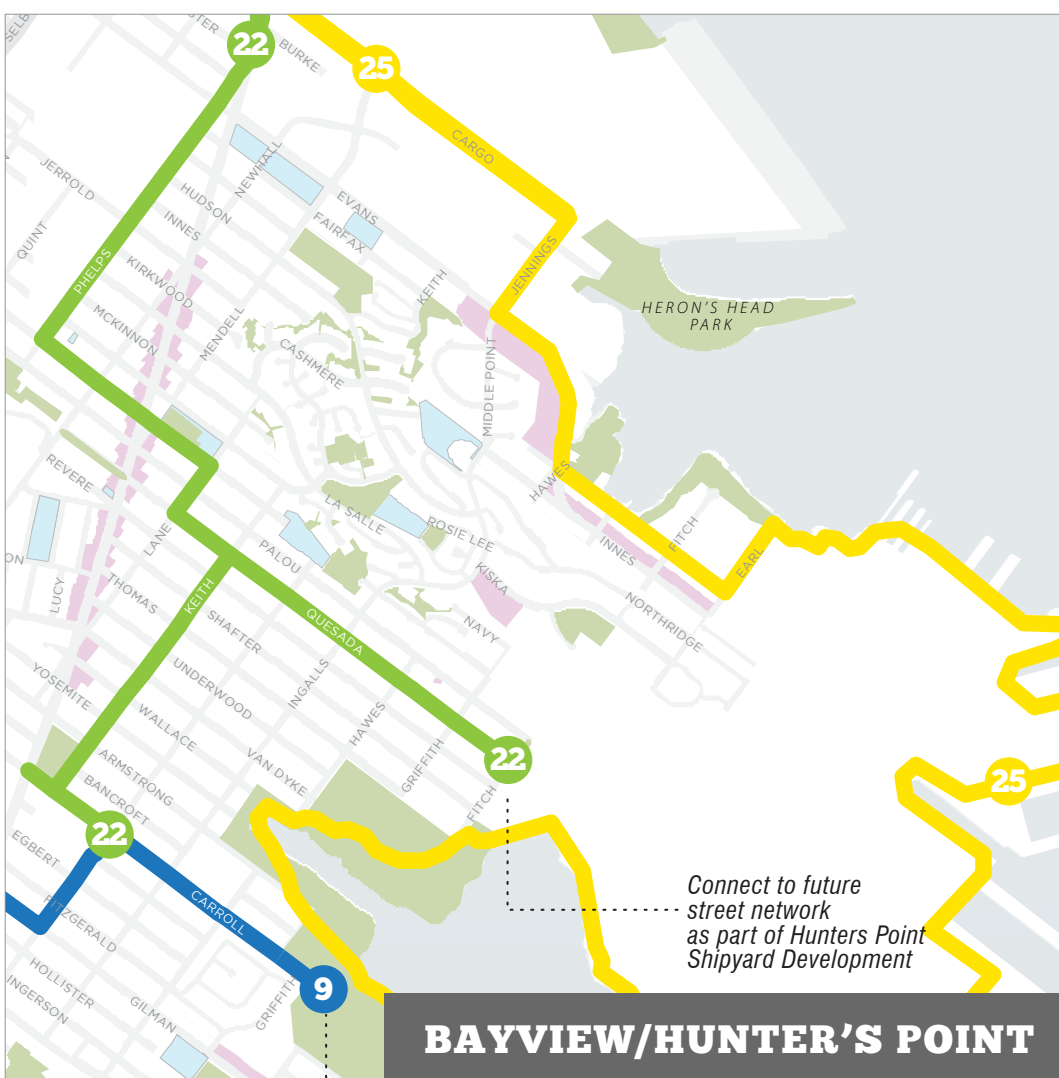


STAY INVOLVED!

- Find More Information on Our Project Website <http://greenconnections.sfplanning.org>
- Provide Feedback on the Draft Network and Design Concepts
- Participate in Upcoming Workshops and Events
- Join the Green Connection Project E-Mail List <http://signup.sfplanning.org>
- Follow us on Facebook <http://www.facebook.com/greenconnections.sf>

STREETSCAPE DESIGNS IN 6 FOCUS NEIGHBORHOODS

Developing streetscape designs for a segment of the Green Connections Network in each of the 6 focus neighborhoods will provide an opportunity to work with community members to design a Green Connection, test the Green Connections toolkit and prepare portions of the network for implementation.



DISCUSSION

Which segments of the Green Connections Network do you think should be designed for each focus neighborhood?

How should the Green Connections Project prioritize which segments of the Green Connections network to design?

How can the upcoming design work best demonstrate and test the Draft Green Connections Design Concepts?

COMMUNITY BASED PLANNING PROCESS (OCTOBER 2012 - MARCH 2013)

Throughout next year, the Green Connections team will develop streetscape designs for six focus neighborhoods. City staff will collaborate with community stakeholders to establish a vision and a design for segments of the network over three community meetings.

- Outreach Event #1: Project overview (Fall)
- Outreach Event #2: Discuss design options (Winter)
- Outreach Event #3: Detailed design, stewardship, implementation (Spring)

The process will:

- Get community input on priorities for street improvements
- Build on the information gathered as part of the PEQI observational survey (Pedestrian Environmental Quality Index).
- Analyze and evaluate design opportunities and constraints along the Green Connections network within each of the six focus neighborhoods
- Develop and refine design alternatives (site plans and street cross-sections)

- Select a preferred design alternative
- Develop stewardship and implementation strategy.

This process will be similar to other streetscape design process undertaken by the City like the Masonic Street Design Study, Chinatown Broadway Street Design and Cesar Chavez Street Design.



PEQI data collector, July 2012

Photos and graphics from the Masonic Street Design Study, example of a community based planning process.

