

Visitation Valley

May 11, 2013

NO PARKING
8 AM TO 11 AM
MONDAY
STREET CLEANING





Today's Meeting

1. Present refined design based on initial community feedback
2. Get community feedback on the design and priorities
3. Discuss Next Steps





Project Overview

- Two-year planning process
 - Year 1: Citywide Focus
 - Year 2: Neighborhood Focus
- Project Goal: Improve Connections to Open Space
 - Public Health
 - Air Quality
 - Sustainability
 - Create Habitat
 - Economic Justice

Project Team

City Agencies

SAN FRANCISCO
PLANNING DEPARTMENT

SFMTA | Municipal Transportation Agency



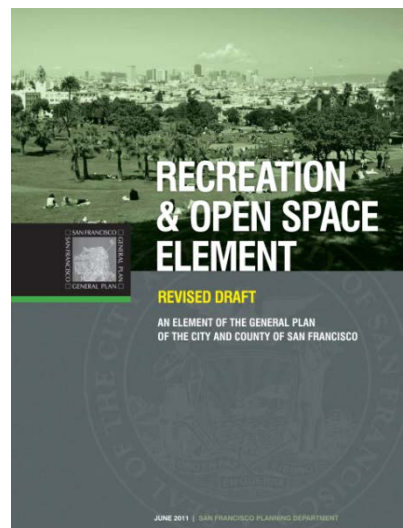
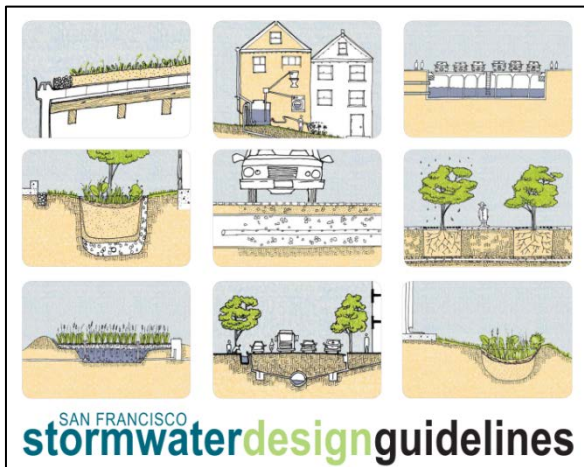
SFDPH
Environmental
*improving environments
protecting health*



Community Partners



Building on Existing Plans and Policies





What is a Green Connection?

A Green Connection is a **special** street or path that **connects people to parks** and open spaces and **enhances the ecology** of the street environment.



What is a Green Connection?



What is a Green Connection?

- Encourage and Support Active Transportation
- Enhance Urban Ecology
- Promote Stewardship and Placemaking



Encourage and Support Active Transportation



Hudson River, NYC



Enhance Urban Ecology

Shotwell Street



Promote Stewardship & Placemaking

Quesada Gardens,
Bayview



Chronicle / Liz Hafalia





Key Project Deliverables

- A Citywide Green Connections network – *draft available*
- Plant List - *ongoing*
- Design Toolkit Concepts – *draft available*
- **Streetscape Designs** - Focus Neighborhoods - *ongoing*
- Implementation Plan – *ongoing*

Developing the DRAFT Network

Goal: Improve Connections to Open Space

- Existing plans
- Community input
- Community plans
- Agency input



Developing the DRAFT Network

- Build on Opportunities
 - Low traffic volumes
 - Low speeds
 - Near schools
 - Space to gather and play
 - Bike network
- Avoid Conflicts
 - Fast moving traffic
 - Key muni routes
 - Truck routes





DRAFT Green Connections Network

- 25 Routes, 140+ miles
- Route name: geographic start & end point and a target species
- Special set of routes that people will go out of their way to use

Planting Palette



Latin Name	Common Name	Plant Type	Attractive Features	Plant Communities	Climate Appropriate Plants	Etc.
<i>Heteromeles arbutifolia</i>	Toyon	Shrub (evergreen)	Red berries in winter, White flowers in fall	SF (native)	SF (native)	Etc.

DRAFT Design Toolkit

Range of interventions:

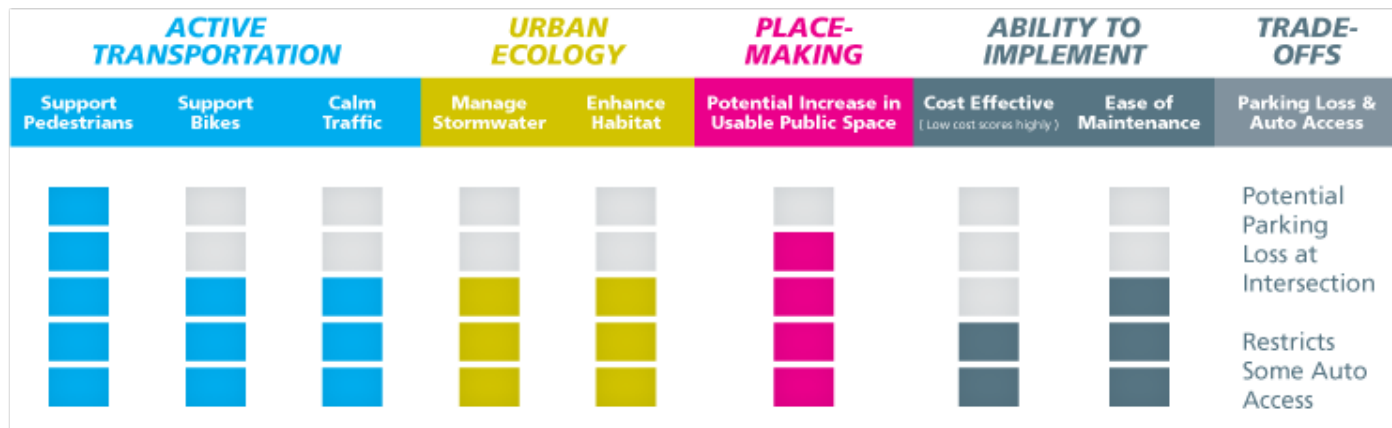
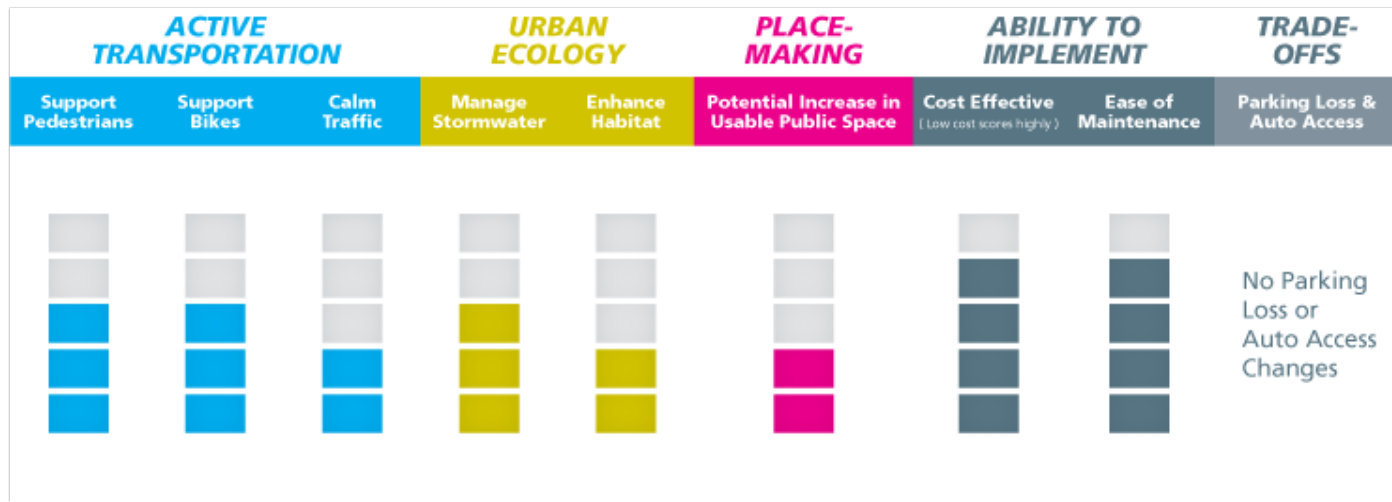
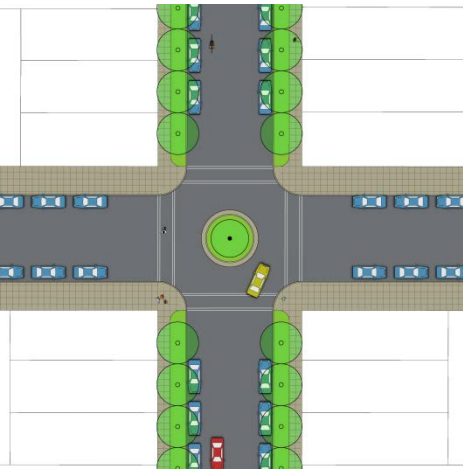
- Intersection Treatments
- Block Treatments

Designs intended to support:

- active transportation
- urban ecology
- stewardship & placemaking

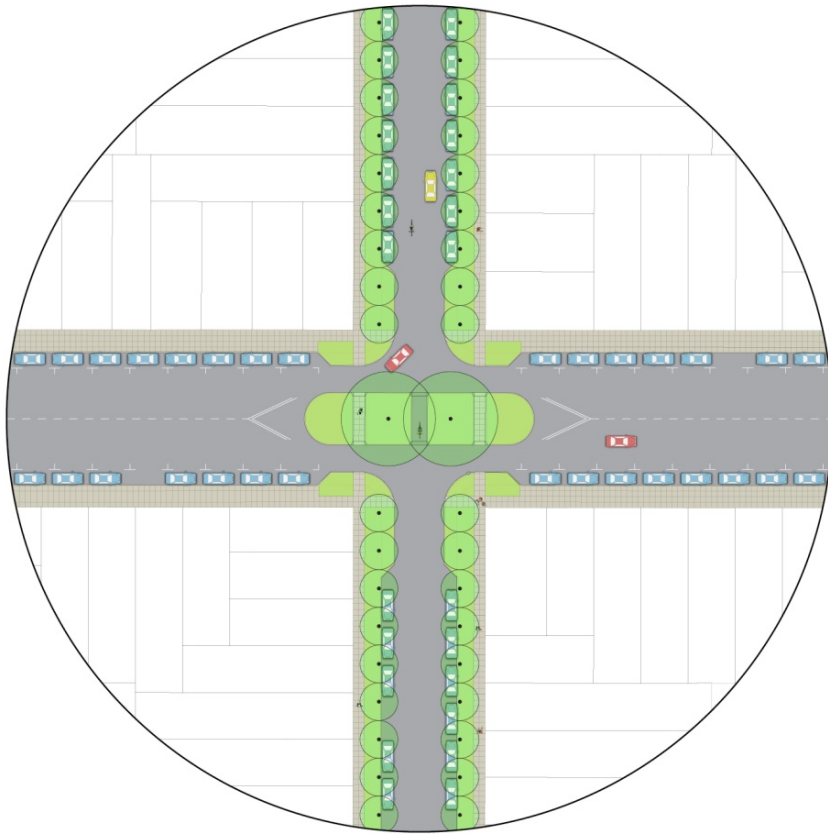


DRAFT Design Toolkit

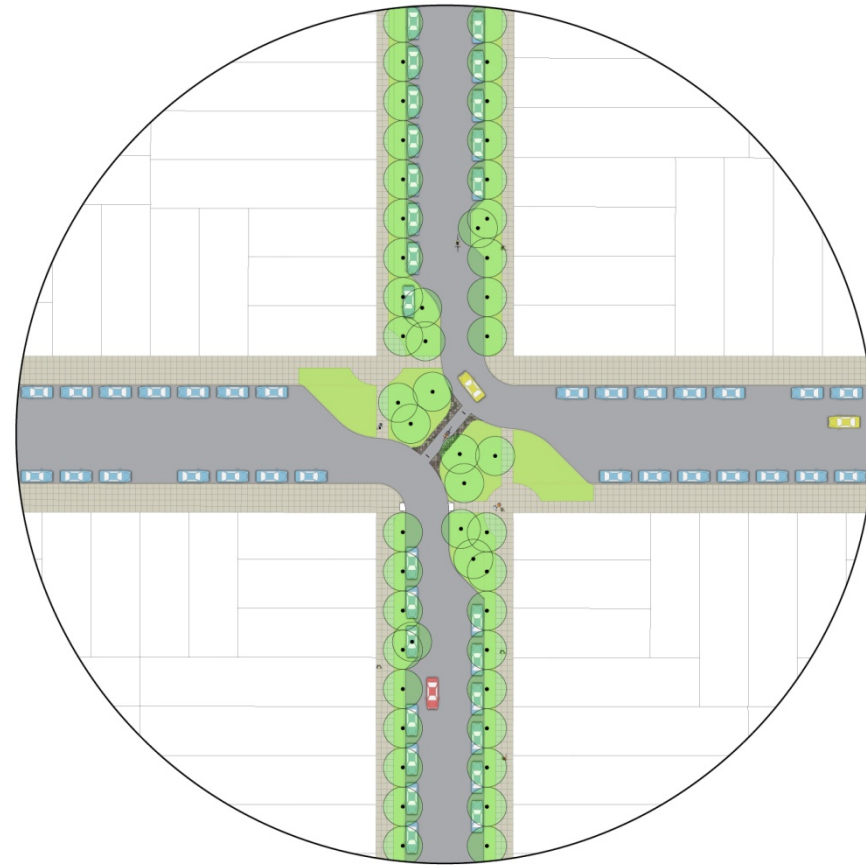


Green Connections: Intersection Treatments

INTERSECTION ISLAND



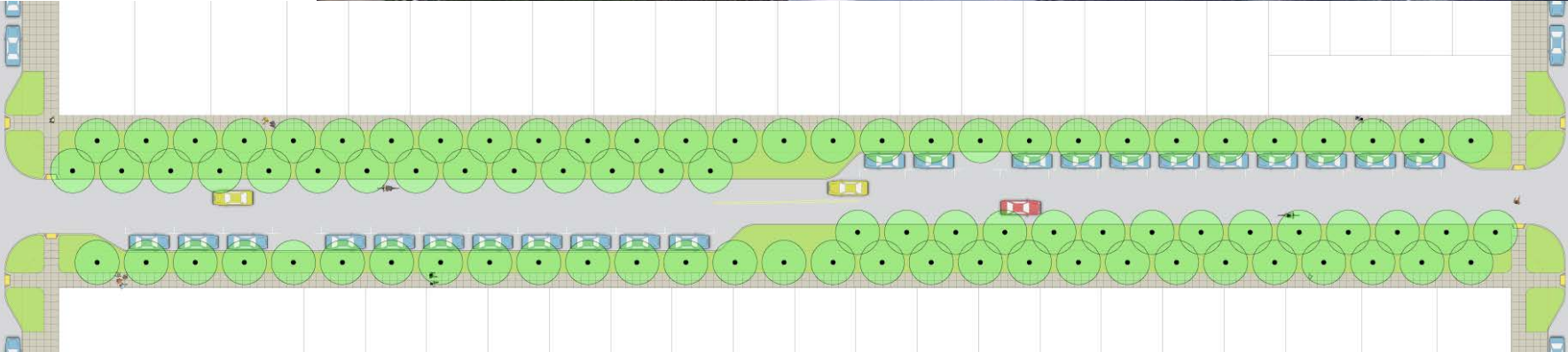
DIVERTER



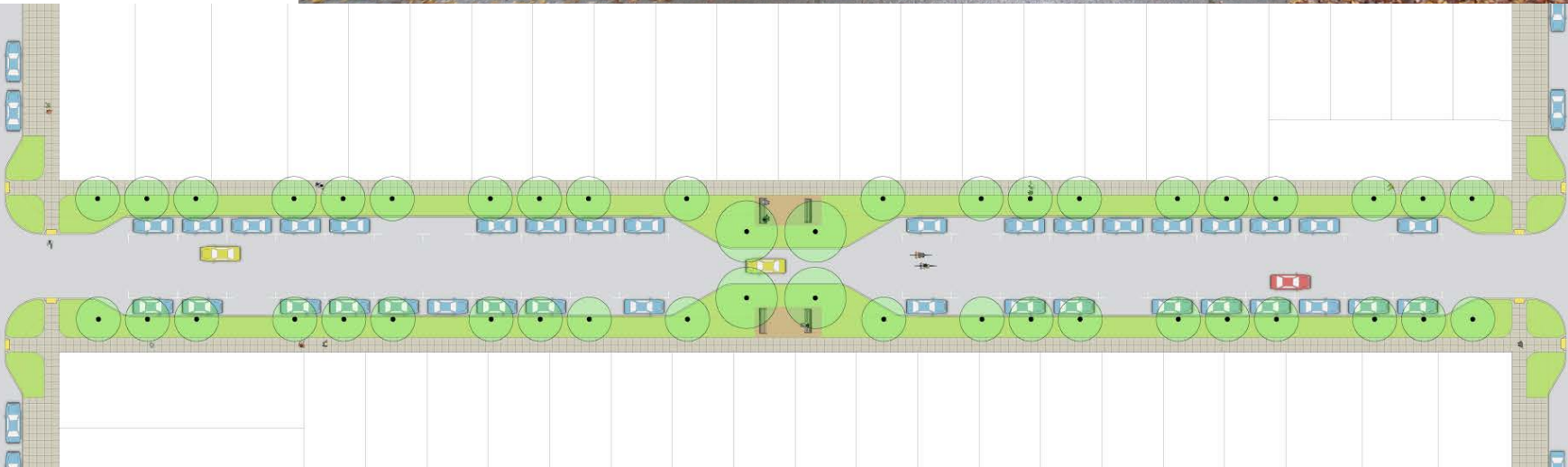
Intersections



Blocks: Chicane



Blocks: Neckdown





Next Steps

- **Citywide Green Connections**
 - Winter 2013: Collect public feedback on DRAFT network and design toolkit
 - Spring 2013: Revise draft documents
 - Fall 2013: Final documents
- **Concept Designs in focus neighborhoods (Vis Valley)**
 - Winter: Workshop 1 [October 2012]
 - Spring: Draft design completed
 - Summer: Begin transportation analysis

Best Practices



Seattle



Portland



Vancouver

Quesada: Existing



Quesada: Proposed

Quesada St., at Jennings

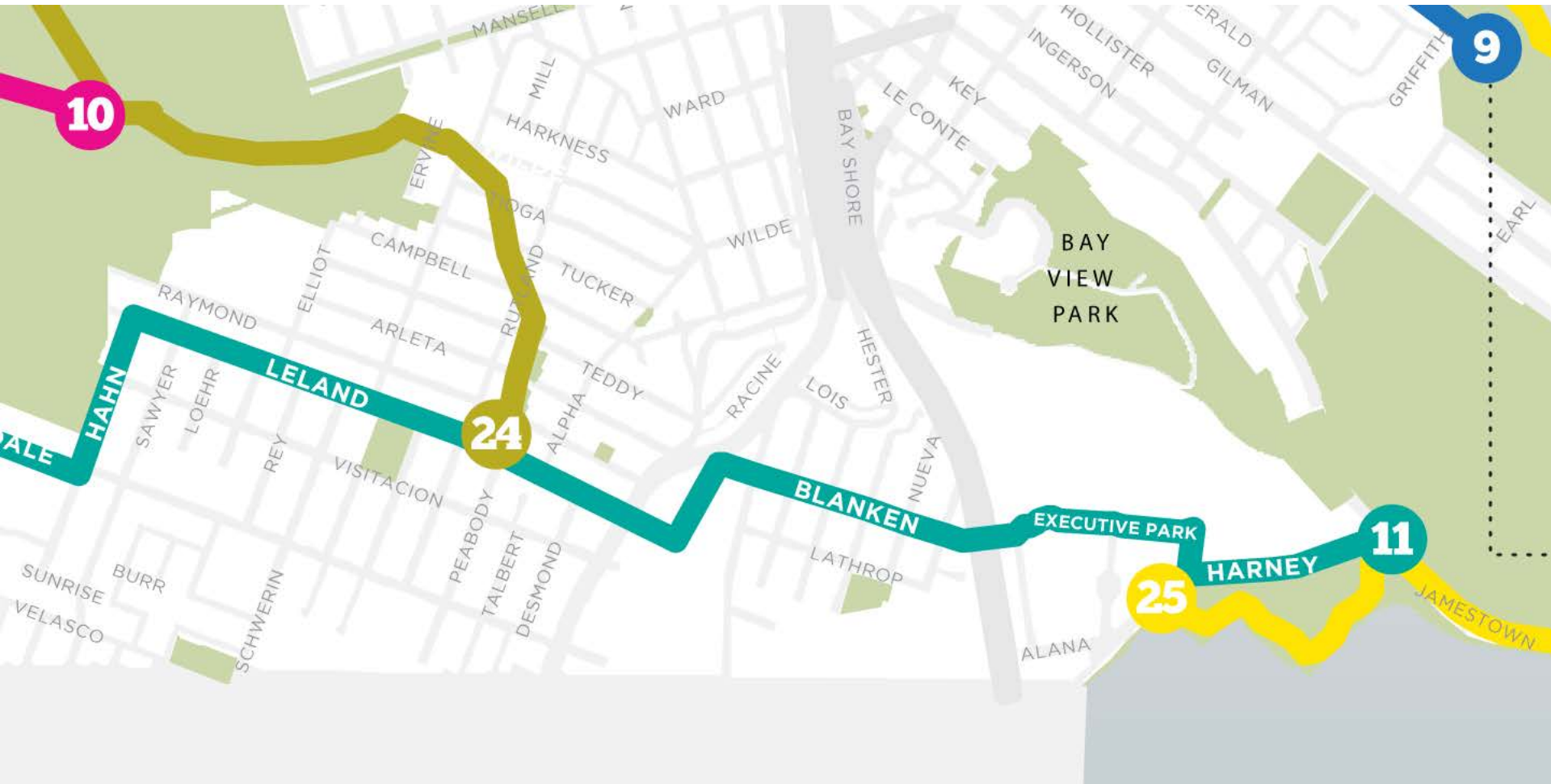


What We Heard: Potential Network Changes

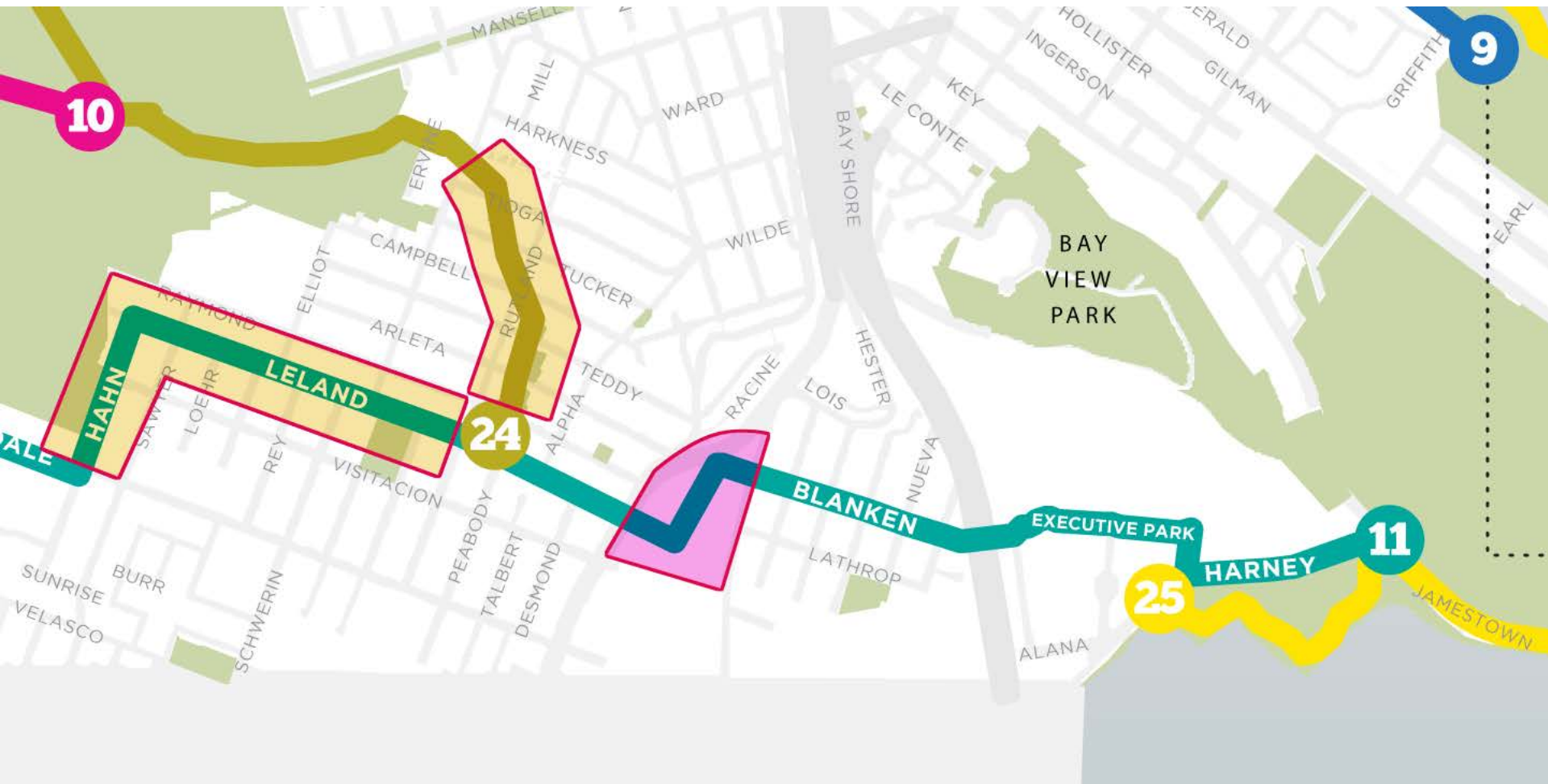
- Extend Leland through Schlage site
- Use Hahn instead of Sawyer
- Create a connection to McLaren Park
- Potential spur connections
 - Leland to Park (between Sayer and McLaren Park)
 - Sawyer St between middle school and Leland
 - Vis Valley Greenway mid-block between Rutland and Alpha (highlight pedestrian path where the greenway shifts)

IMPROVEMENTS	NUMBER OF DOTS				TOTAL
	Grp 1	Grp 2	Grp 3	Grp 4	
Bicycle amenities (e.g. bike lanes, sharrows, cycle tracks, bicycle parking)	2	2	2	3	9
Branding	2			3	5
Educational information about flora or fauna along the route	5	3		3	11
Greening and landscaping	5	2	3	5	15
Opportunities to provide habitat for specific wildlife	6		1	1	8
Pedestrian amenities (e.g. sidewalk extensions, lighting, benches)	4	8		4	16
Public Spaces (e.g. spaces to play & gather, art elements)	5			5	10
Stormwater management	1		2	4	7
Traffic calming	2	2	3	5	12
Traffic diversion	4	1	3	2	10
Wayfinding & signage	3	1	1	5	10

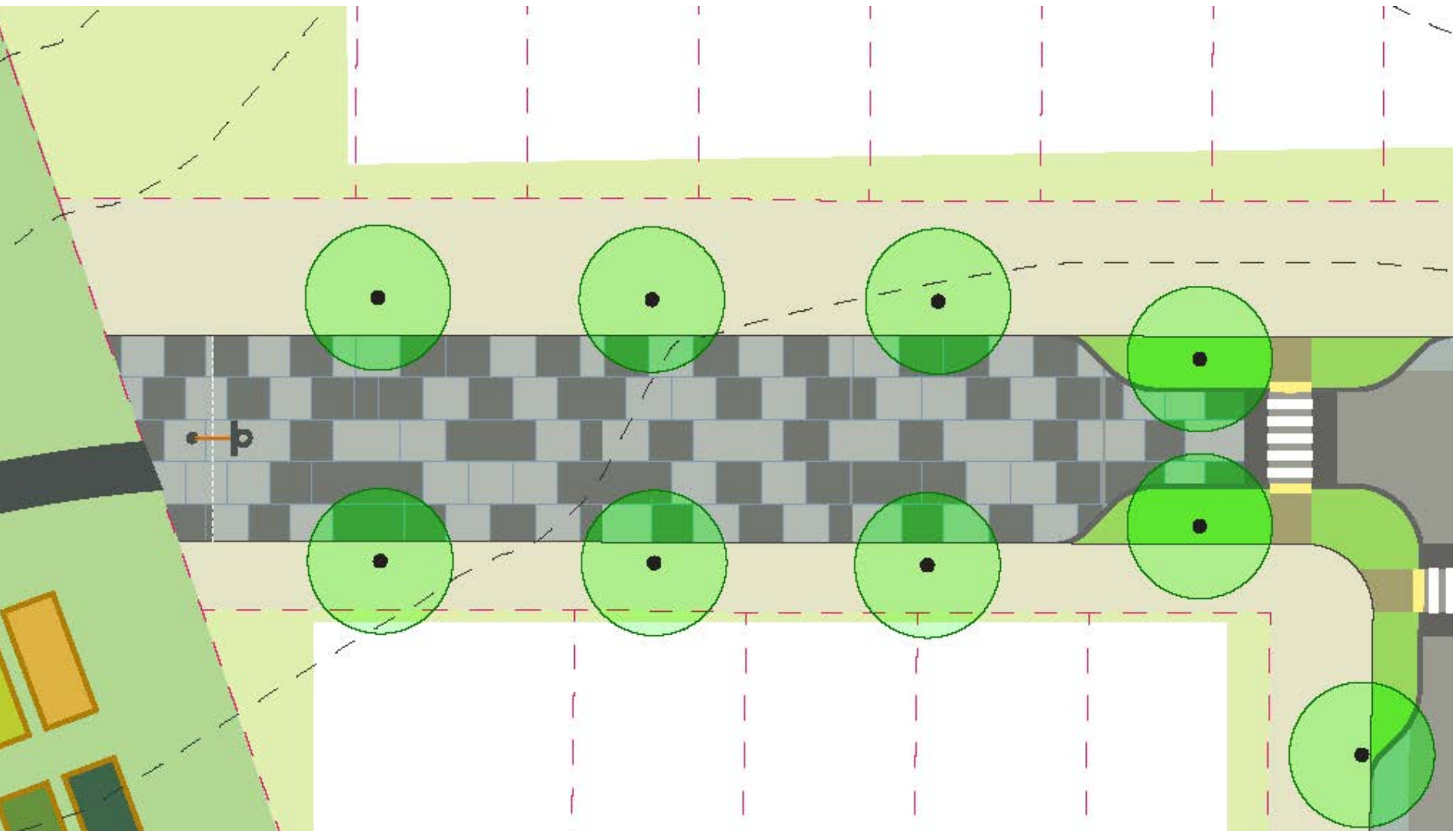
Visitation Valley Network



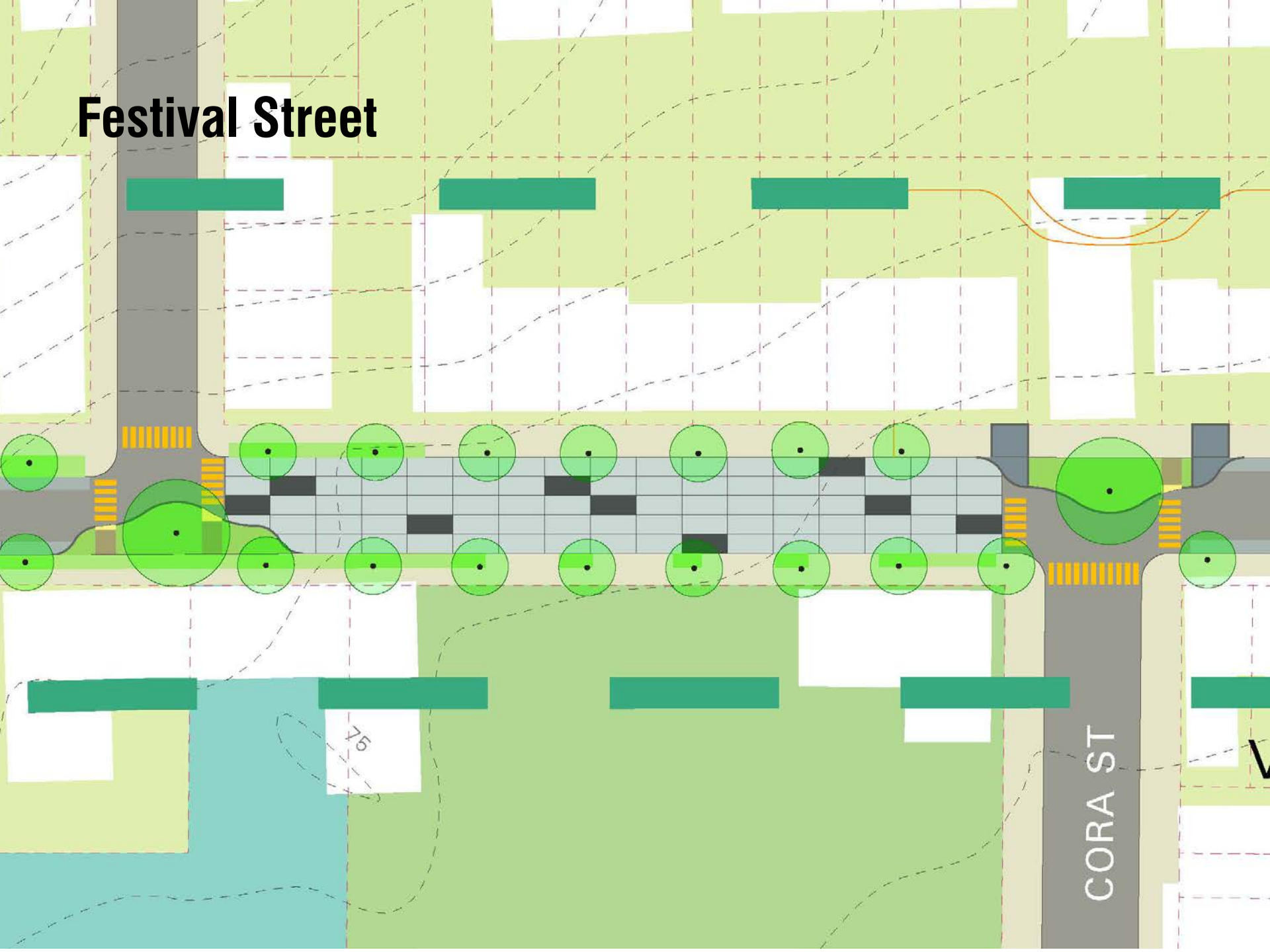
Visitation Valley Network Design



Play Street and Park Connection



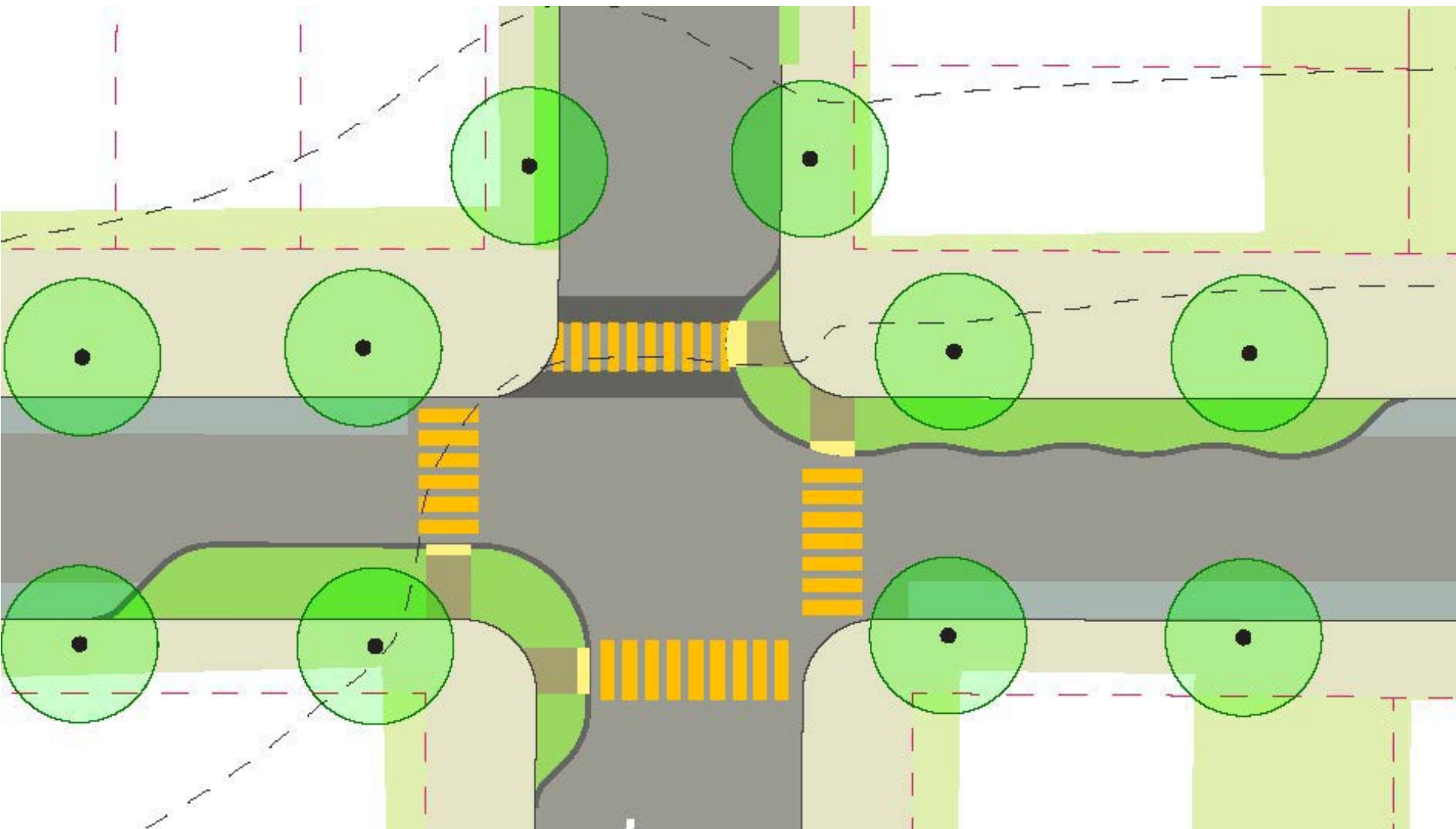
Festival Street



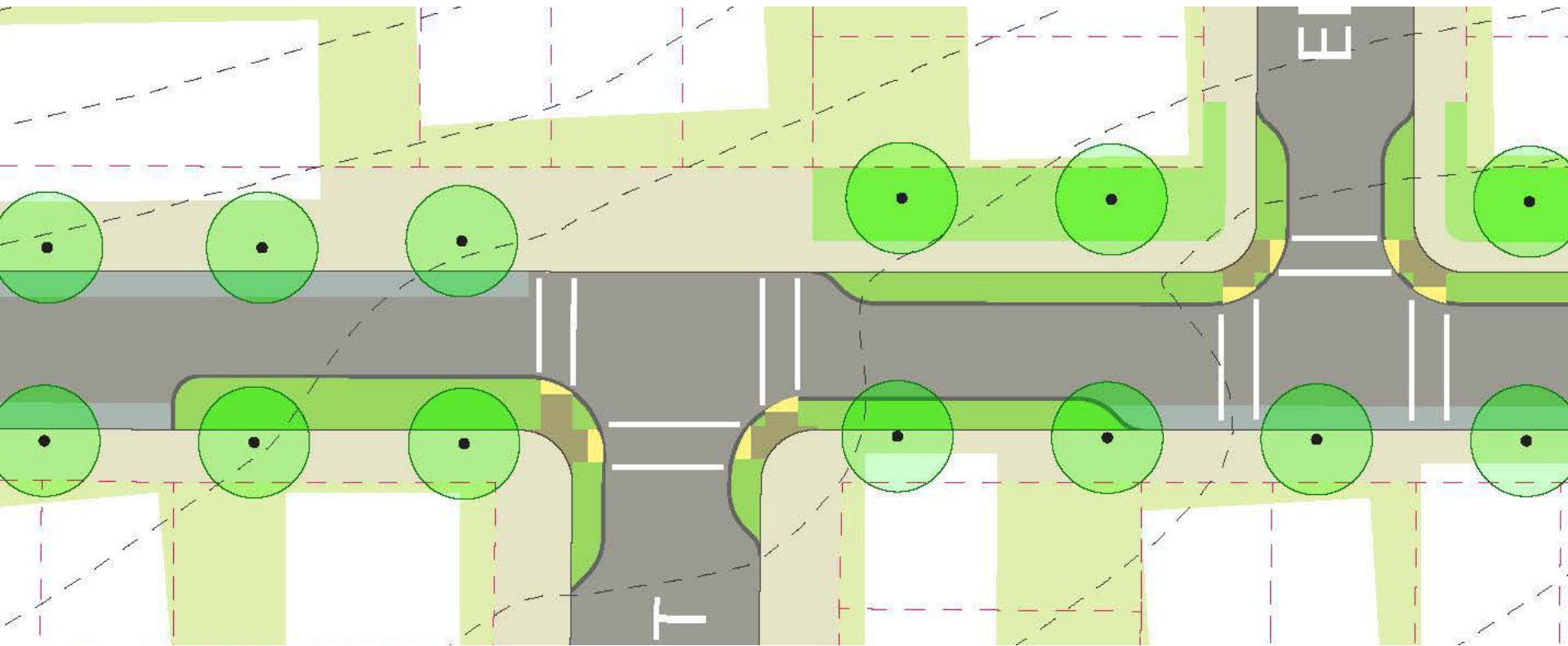
CORA ST

75

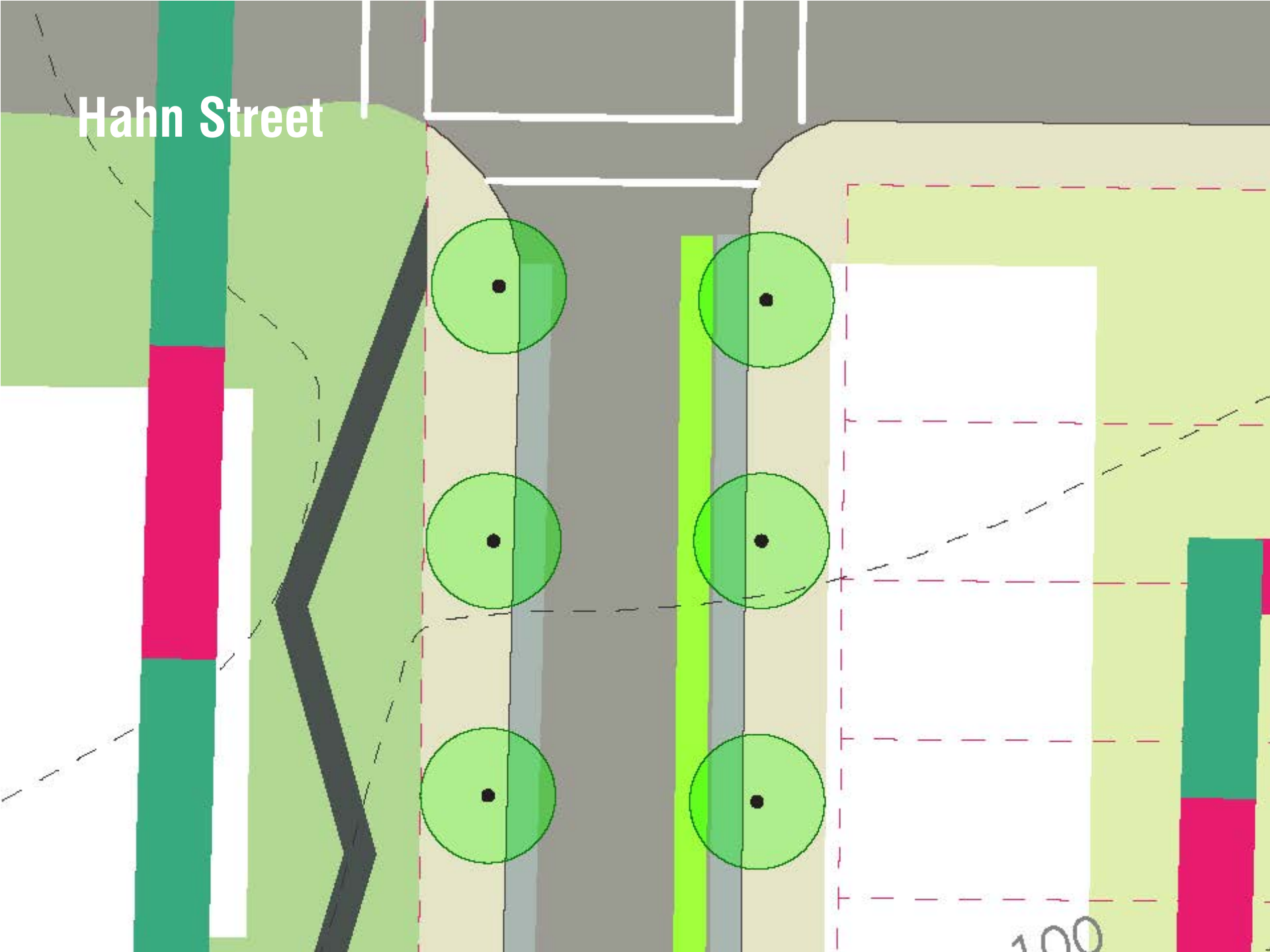
Bulb-out Studies



Bulb-out Studies



Hahn Street



A stylized map of the Vis Valley Greenway. The map features a central grey road with a bridge crossing a waterway. Greenway paths are shown as thick green lines connecting various green spaces. The background is a light green grid with dashed lines. White shapes represent buildings or structures. The text 'Greenway Connections' is in the top left, and 'VIS VALLEY GREENWAY' is in the bottom center.

Greenway Connections

**VIS VALLEY
GREENWAY**



Next Steps

- **Short Term: Finalize Concept Design**
 - Transportation Analysis
 - Explore funding options
- **Future: Design Development**
 - Additional community process
 - Detailed design work



Stay Involved!

- **Provide input on Citywide Network & Design Concepts**
 - Project website
<http://greenconnections.sfplanning.org>
 - Facebook Page
<http://www.facebook.com/greenconnections.sf>
 - Online survey - **Ends March 7th**
 - Improve SF Survey

- **Participate in developing a concept design in the focus neighborhood**
 - Join our mailing list! <http://signup.sfplanning.org>
(check the box for “Green Connections”)

Discussion and Group Exercise

Discussion Questions

- Where are your priority locations for bulb-outs
- How should the design balance greening and parking loss?
- Which features can the community take on itself?
- Is the community willing to explore intensive features like play streets, festival streets and super-bulbs?

Group Exercise

- Vote for your favorite design features
- Write comments