

The image shows the exterior of the Ingleside Library, a modern building with a curved, cantilevered upper floor supported by light blue columns. The ground floor features large glass windows and dark wood paneling. A paved walkway leads through a landscaped courtyard with green bushes, small trees, and a central tree. The sky is overcast.

# INGLESIDE LIBRARY PARK

San Francisco Planning Department  
June/July 2011













ZENARSKI '05



# TIMELINE

2009: Plan adopted

2009: AvalonBay entitled

2009: PUC allocated funds to help design the park

2010: Ingleside Library opens

2011: Grant opportunity available

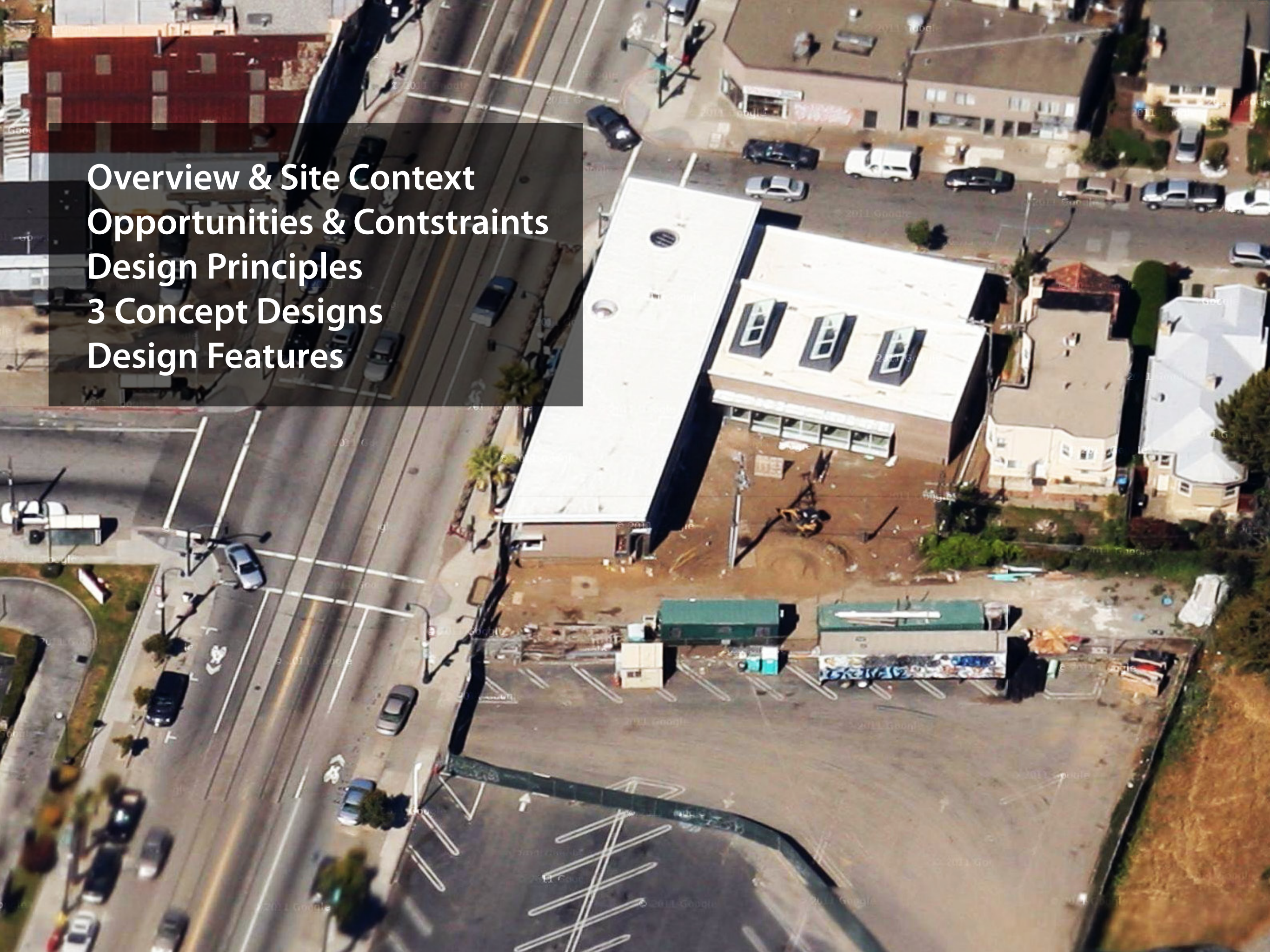


# GRANT REQUIREMENTS

Concept plan that identifies recreational features

Ideas from you regarding design and the use of the space



An aerial photograph of a city street intersection. A large, white, rectangular building with three dormer windows is the central focus. To its left is a multi-lane road with traffic. To its right is a parking lot with several cars and two large green trucks. The background shows residential houses and more parked cars. A semi-transparent dark box is overlaid on the left side of the image, containing white text.

# Overview & Site Context

## Opportunities & Constraints

### Design Principles

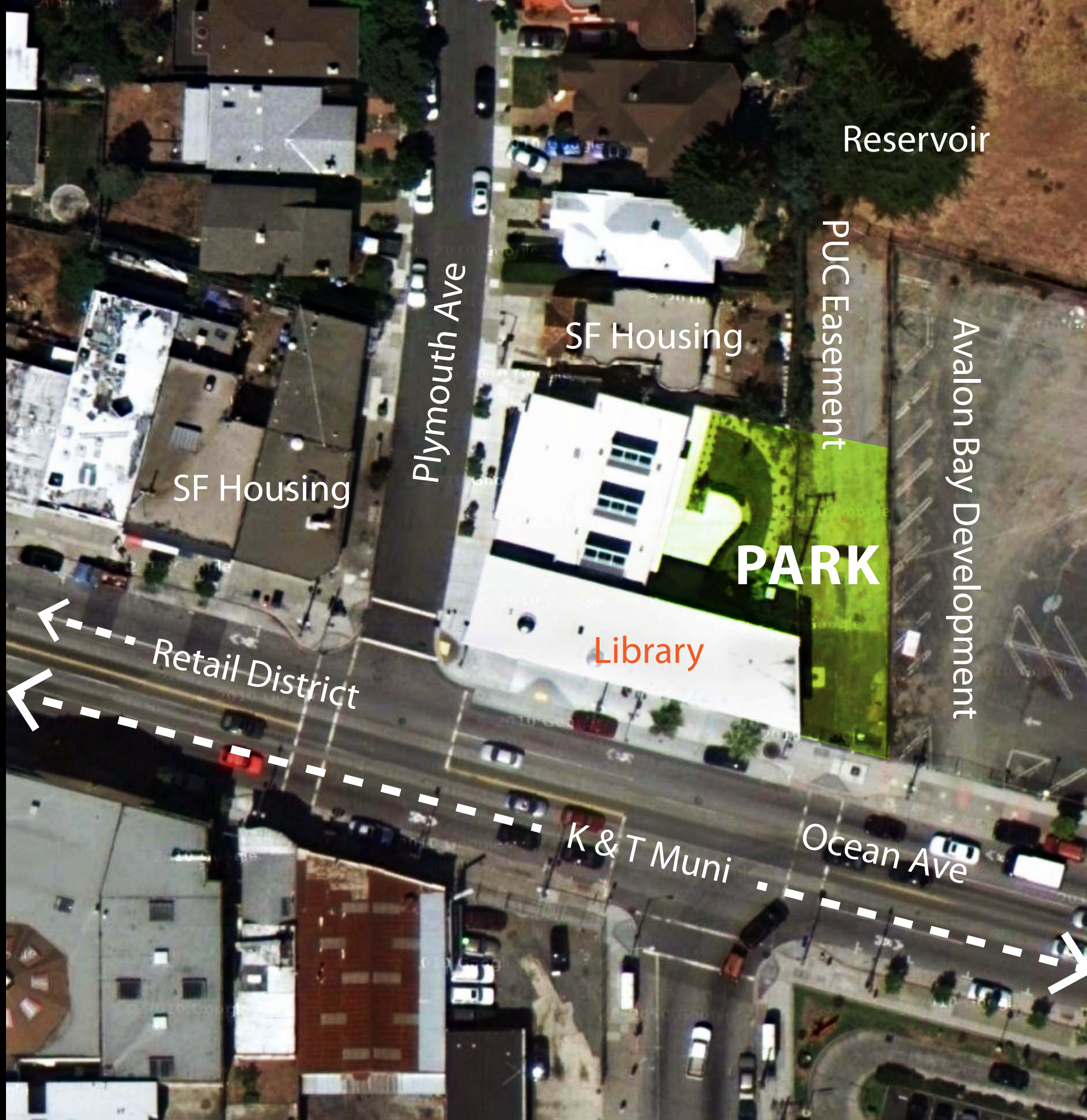
### 3 Concept Designs

### Design Features









Reservoir

PUC Easement

Avalon Bay Development

Plymouth Ave

SF Housing

SF Housing

PARK

Library

Retail District

K & T Muni

Ocean Ave





UTILITY EASEMENT 3'

An aerial photograph of a multi-story building with a white facade and several windows. A yellow dashed line highlights a narrow strip along the top edge of the building, labeled 'UTILITY EASEMENT 3''. A red dashed line outlines a central area of the building, which is further divided into two sections: a top section labeled 'ADA ACCESS TRICKY' and a bottom section labeled 'GOOD SOLAR ACCESS'. To the right of the building, a green dashed line outlines a grassy area, labeled 'PUC TRUCK ACCESS' and 'EXISTING UTILITIES'. The surrounding area includes a parking lot with several vehicles and a street with a few cars.

ADA ACCESS  
TRICKY

GOOD SOLAR  
ACCESS

PUC TRUCK  
ACCESS

EXISTING  
UTILITIES



**~3.5' = 45' ramp min w/ rests**

**+2'**

**-1.5'**

**67'**

**75'**

**117'**

**30'**

**elevation zero**

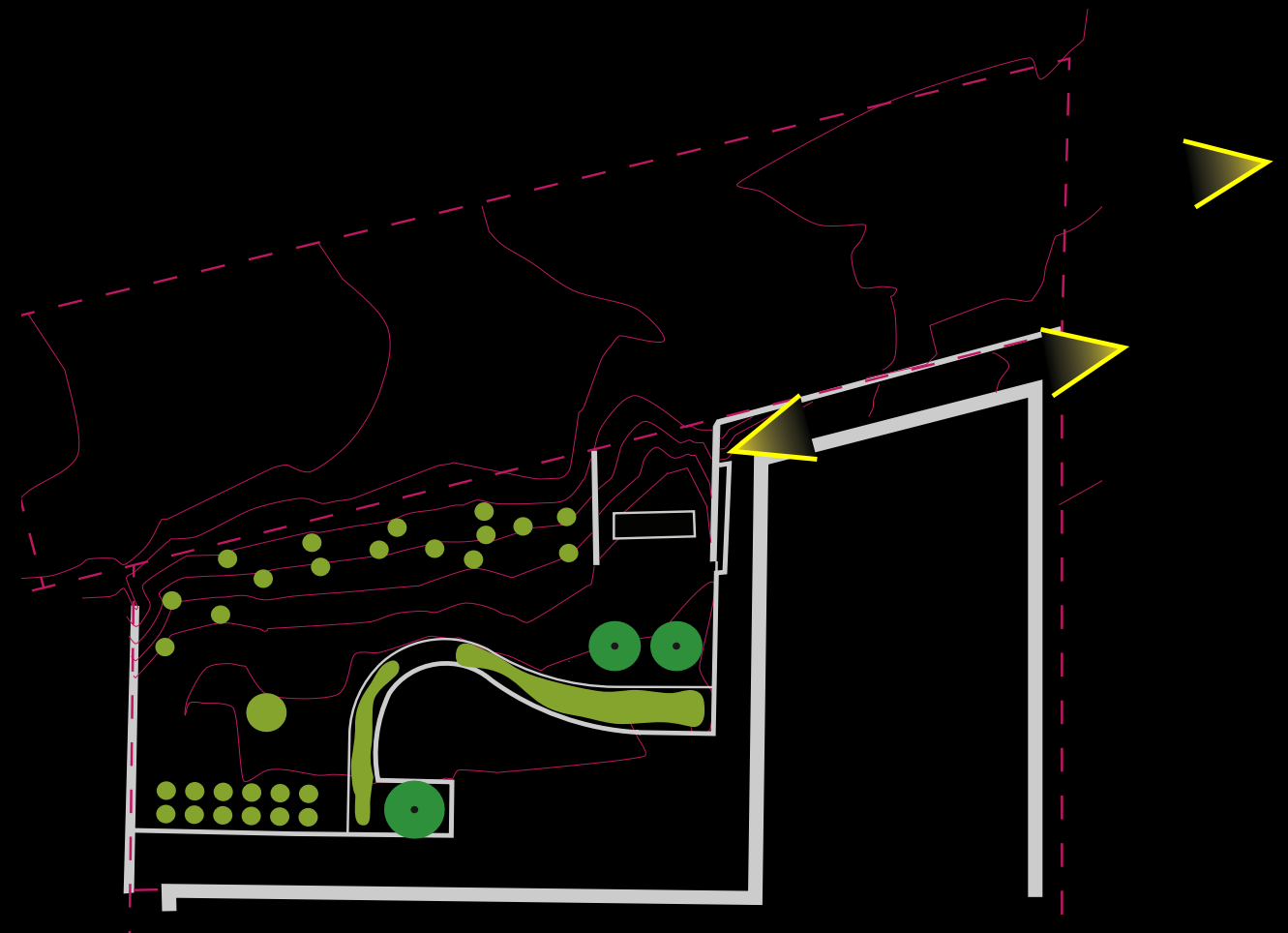
**0**



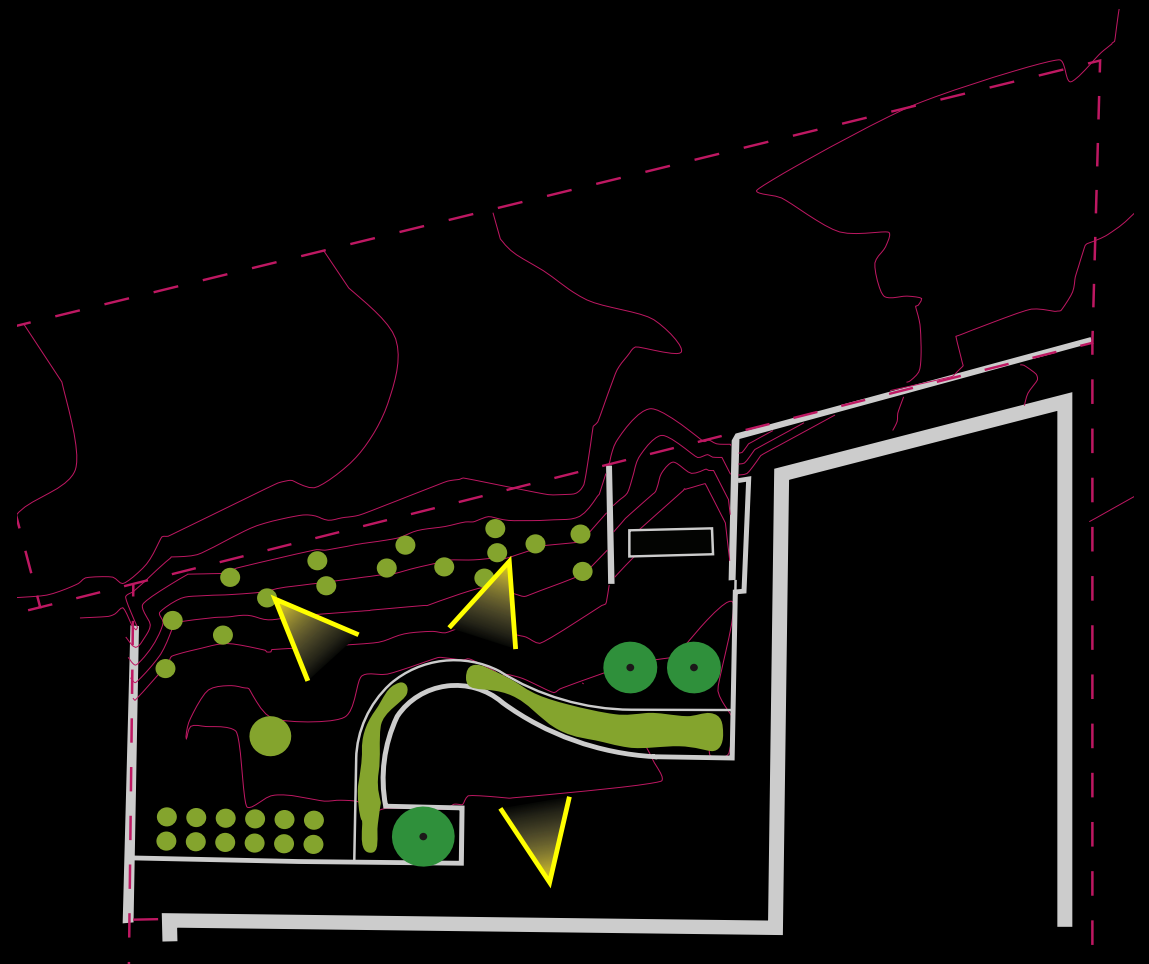




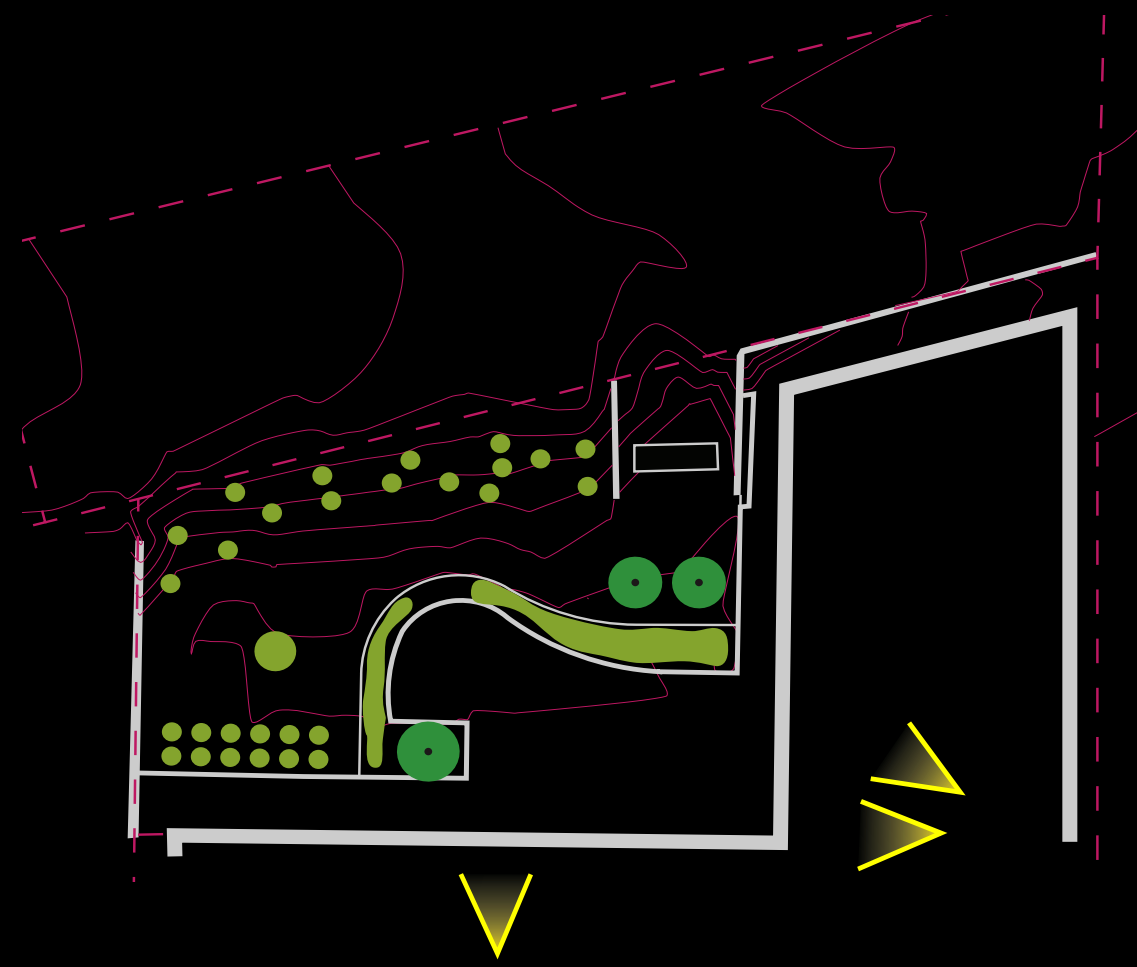










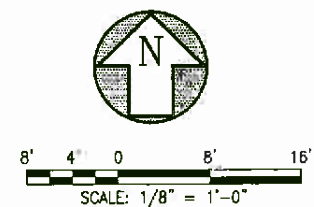






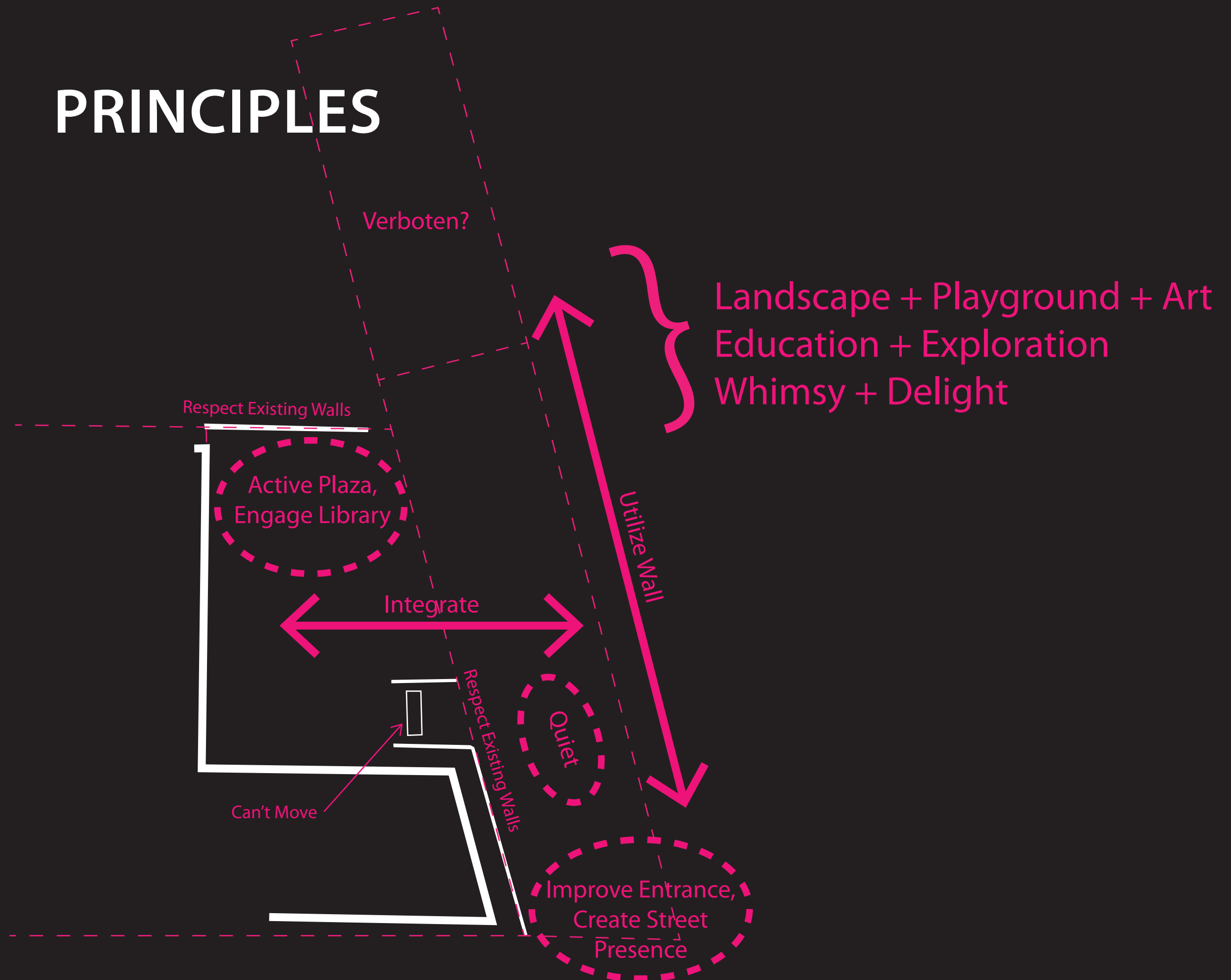
Department of Public Works  
Landscape Architecture  
March, 18, 2011

# PUC/INGLESIDE LIBRARY OPENSACE CONCEPT - B





# PRINCIPLES



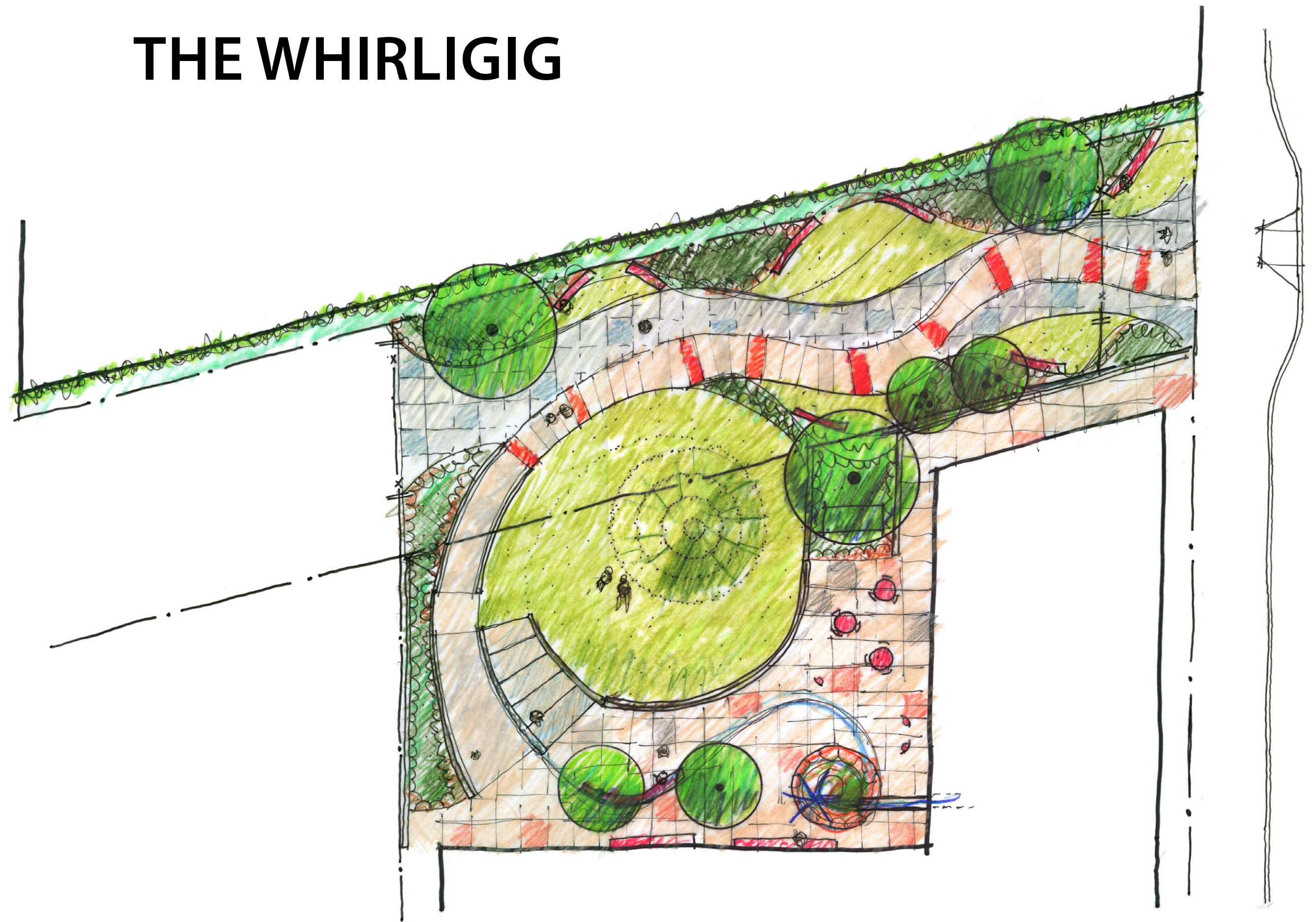


# THE SKOOKUM



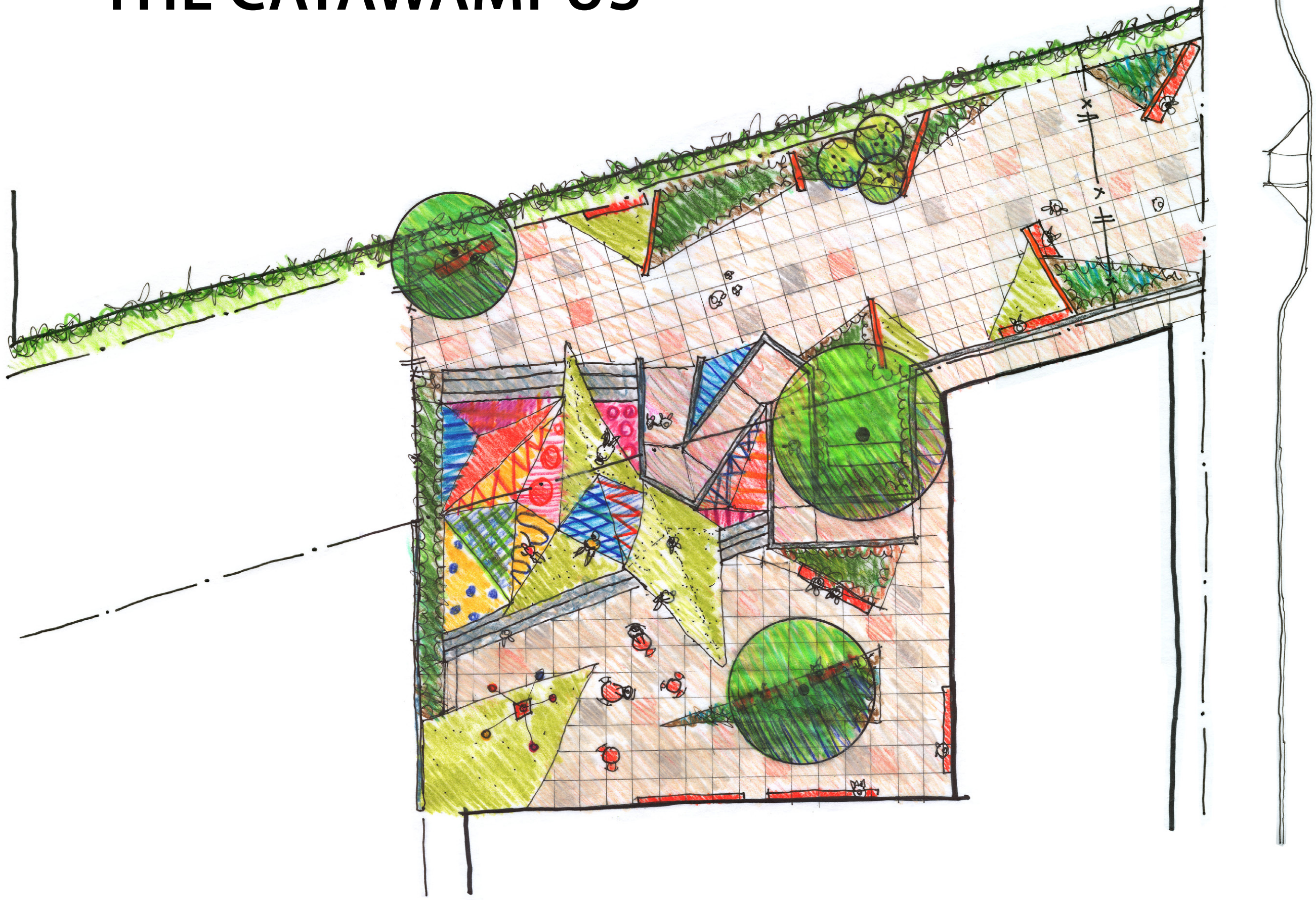


# THE WHIRLIGIG





# THE CATAWAMPUS





# Interactive Play





# Interactive Play



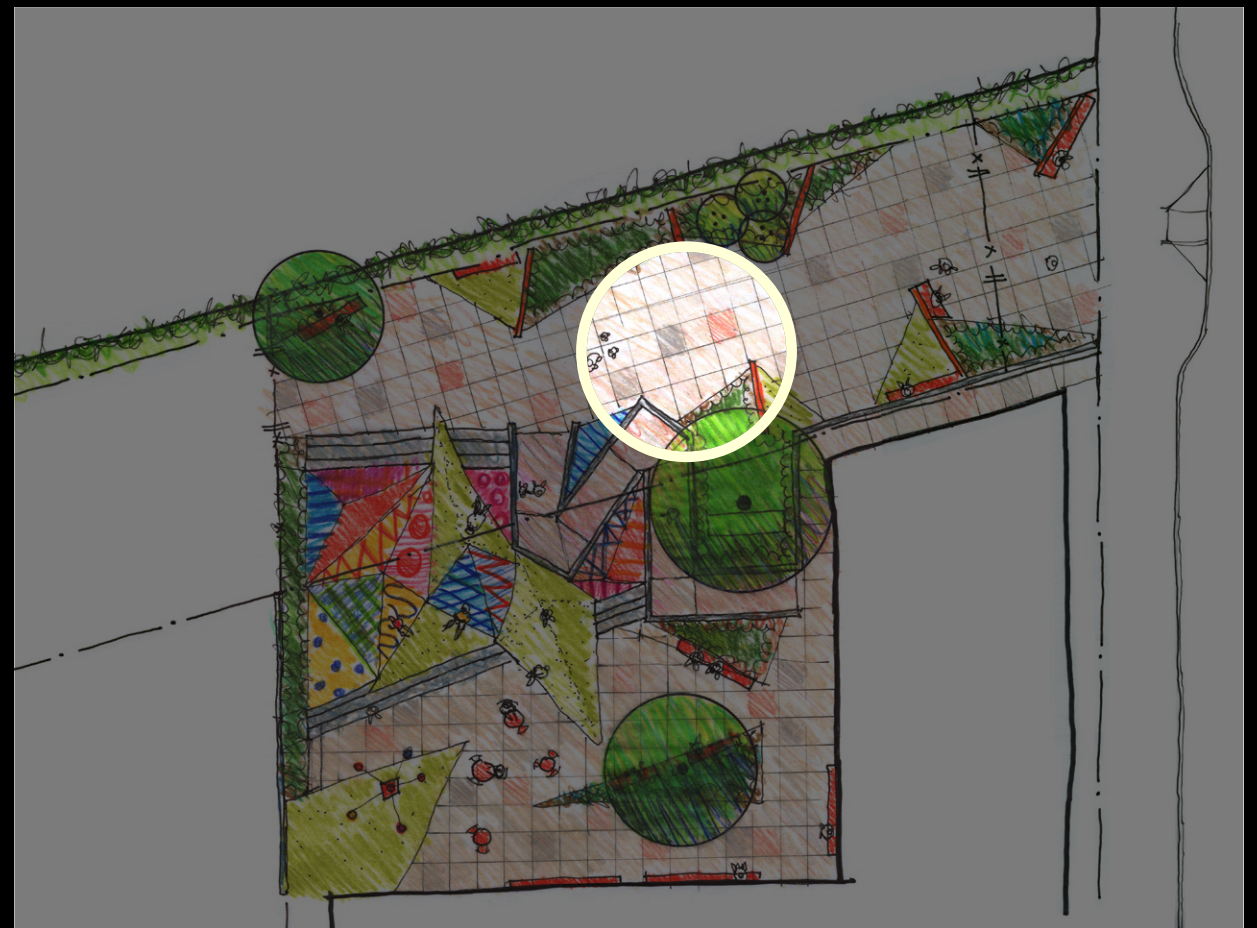


# Didactic





# Didactic



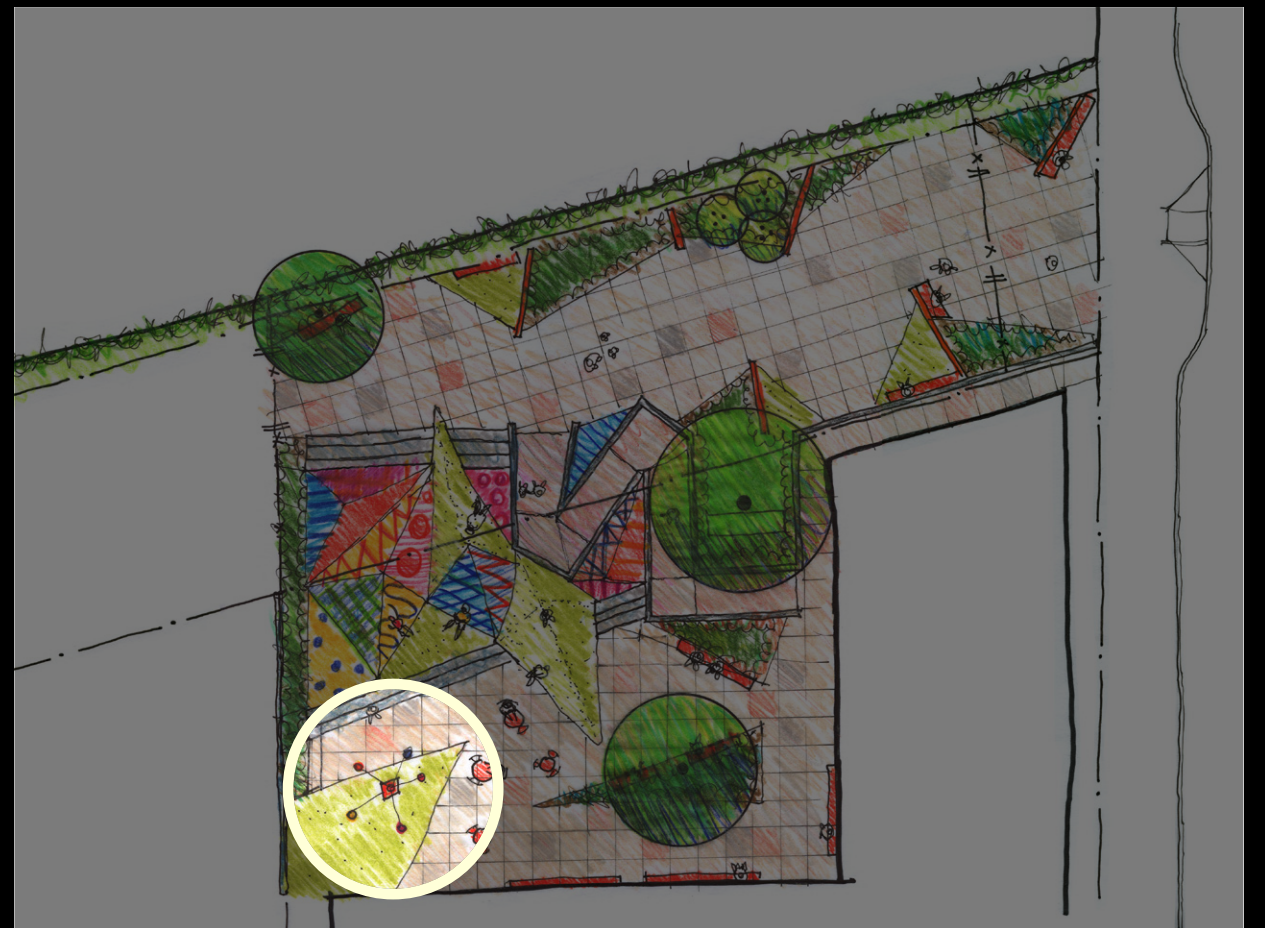


# Public Art





# Public Art





# Landform





# Landform



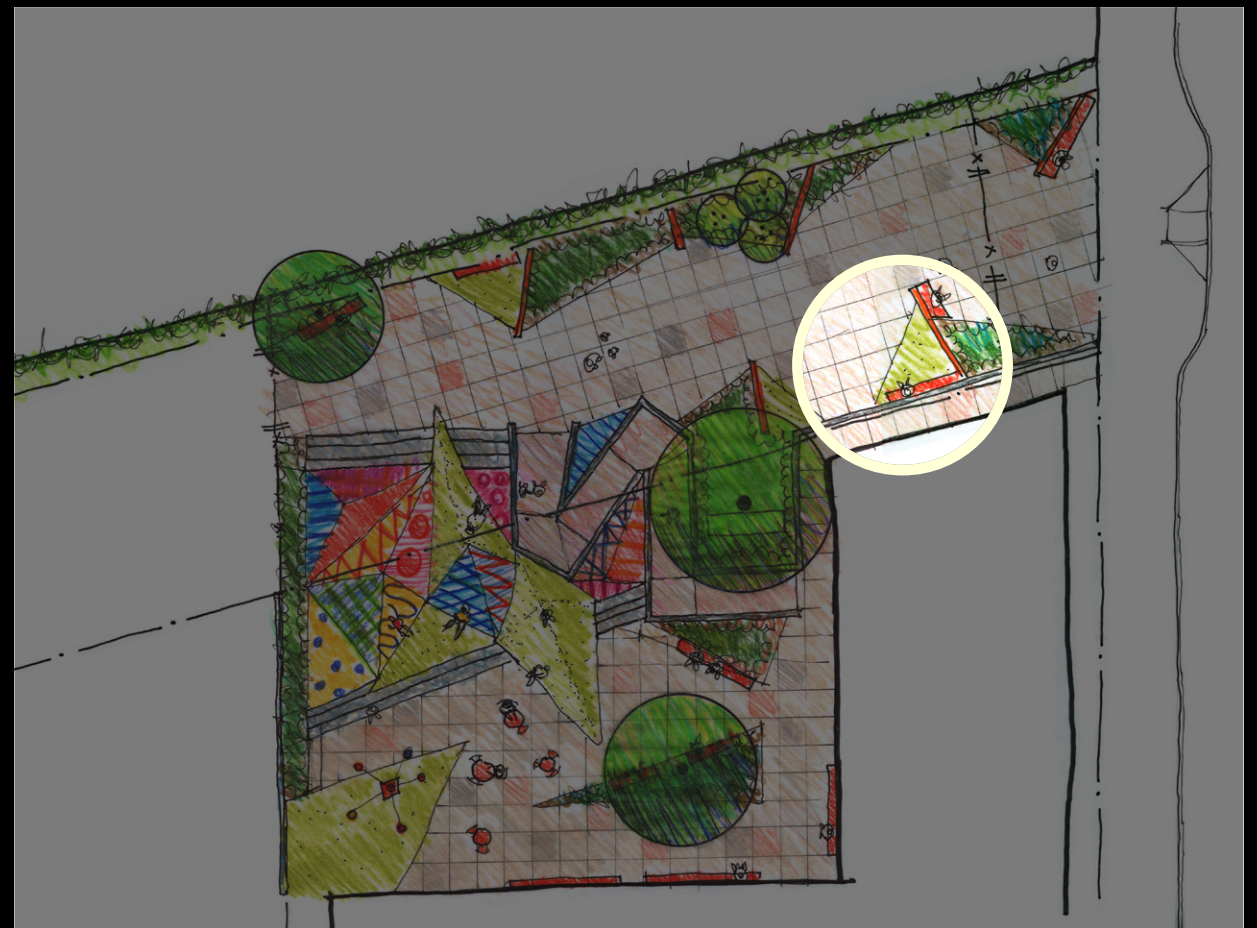


# Reading Nook





# Reading Nook



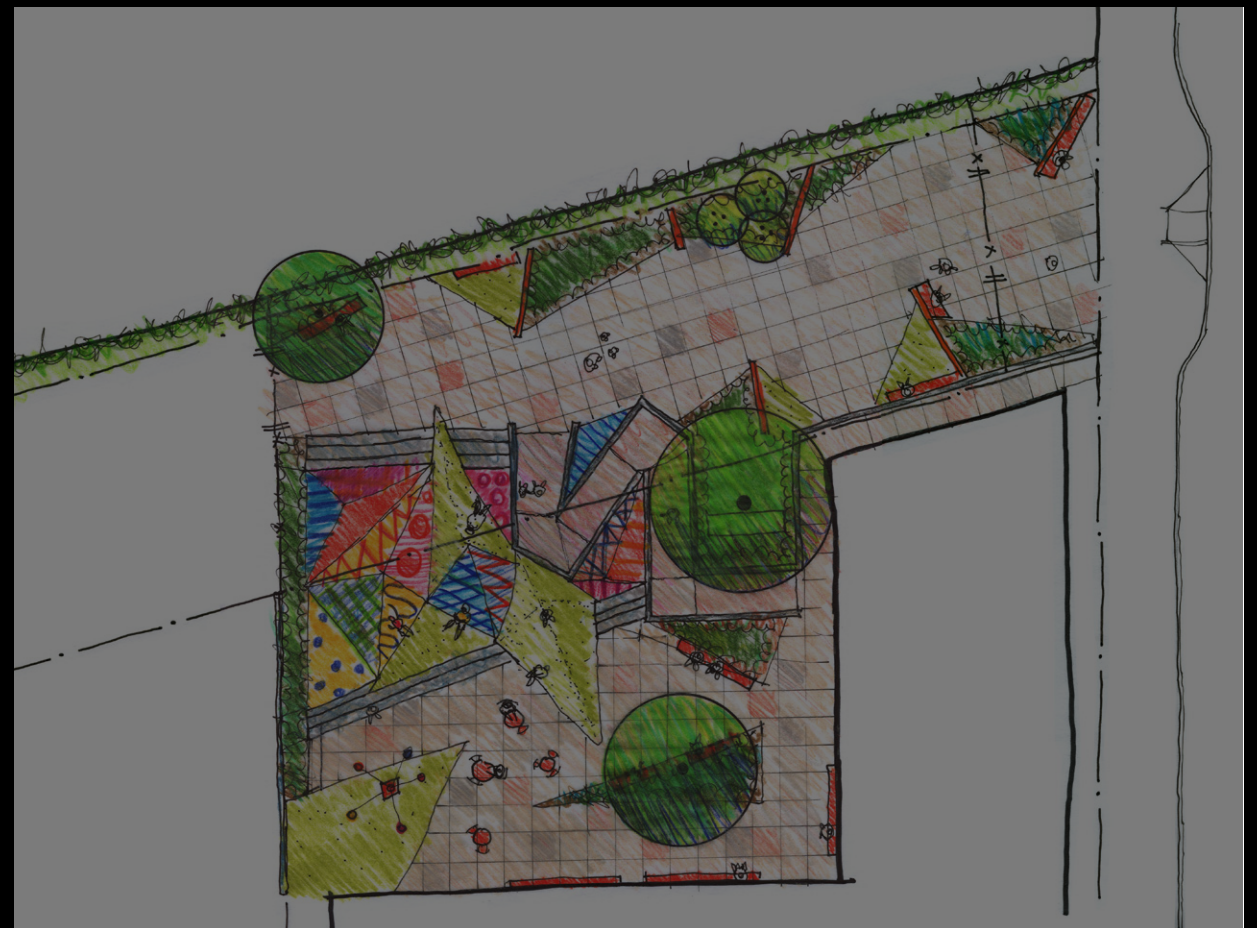
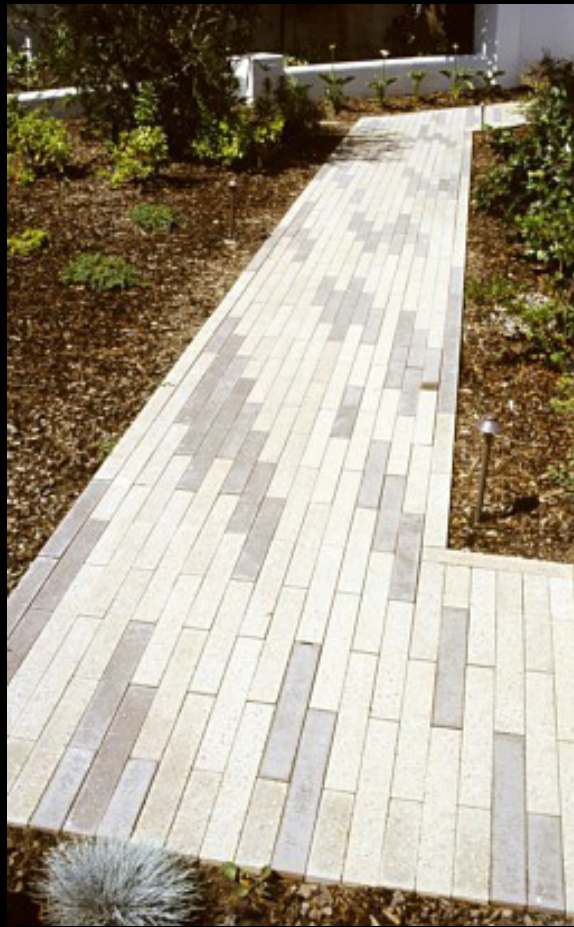


# Special Paving





# Special Paving





# Water Story



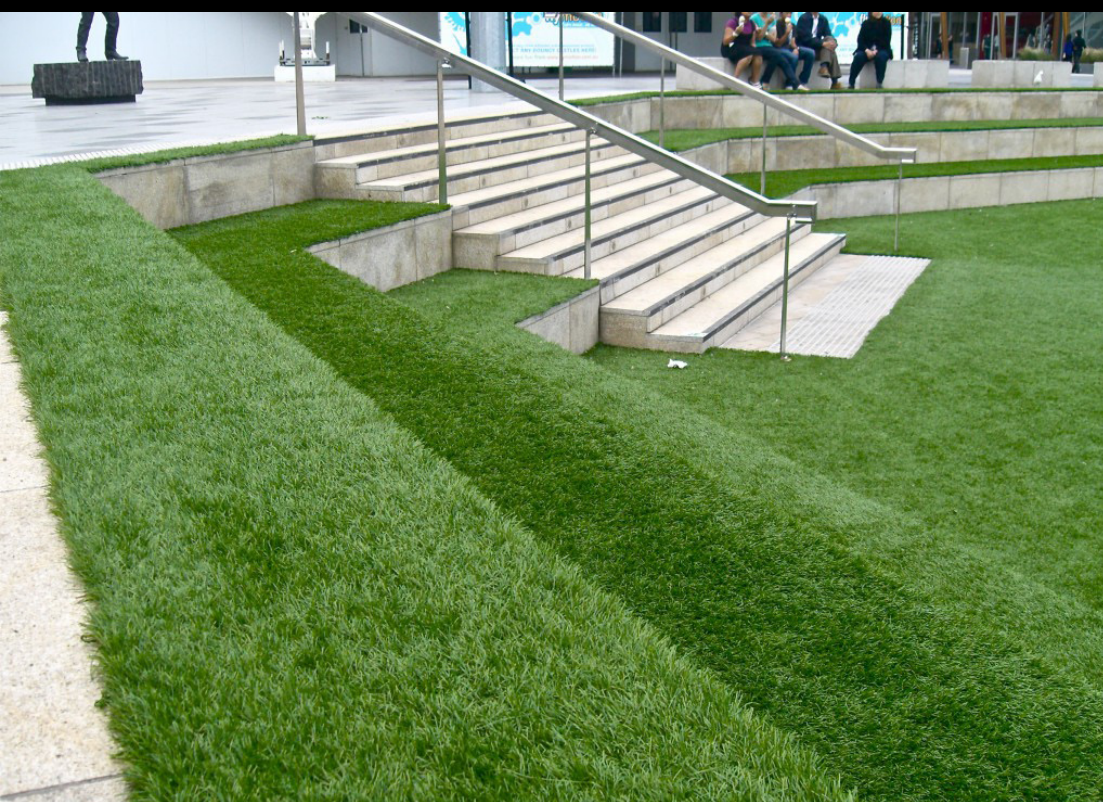


# Water Story



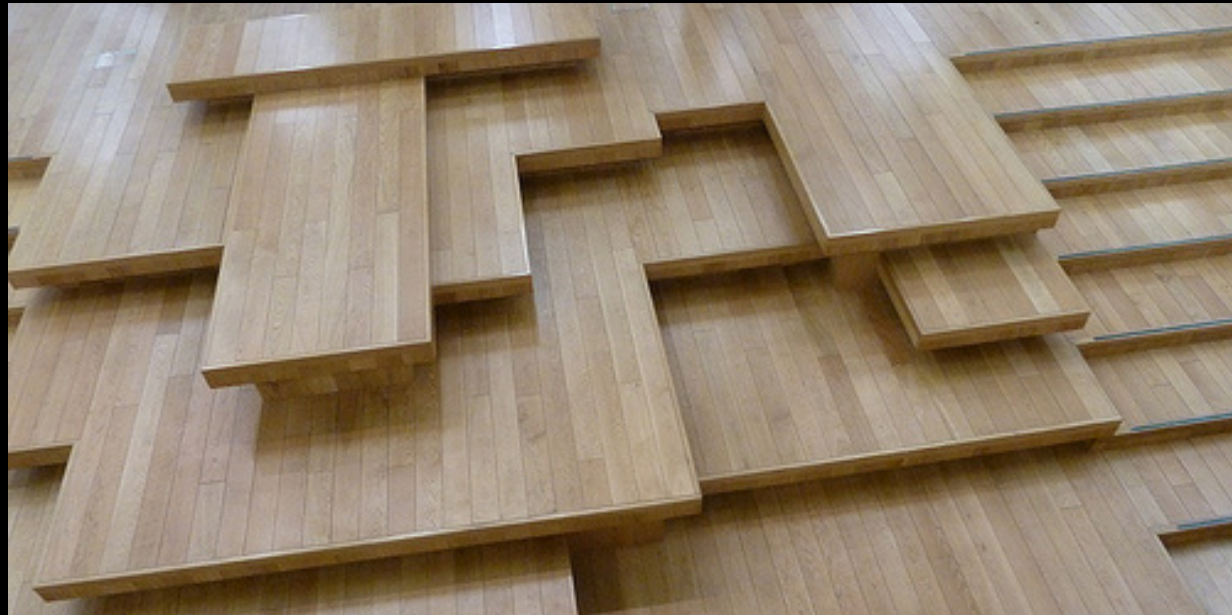


# Amphitheater





# Amphitheater



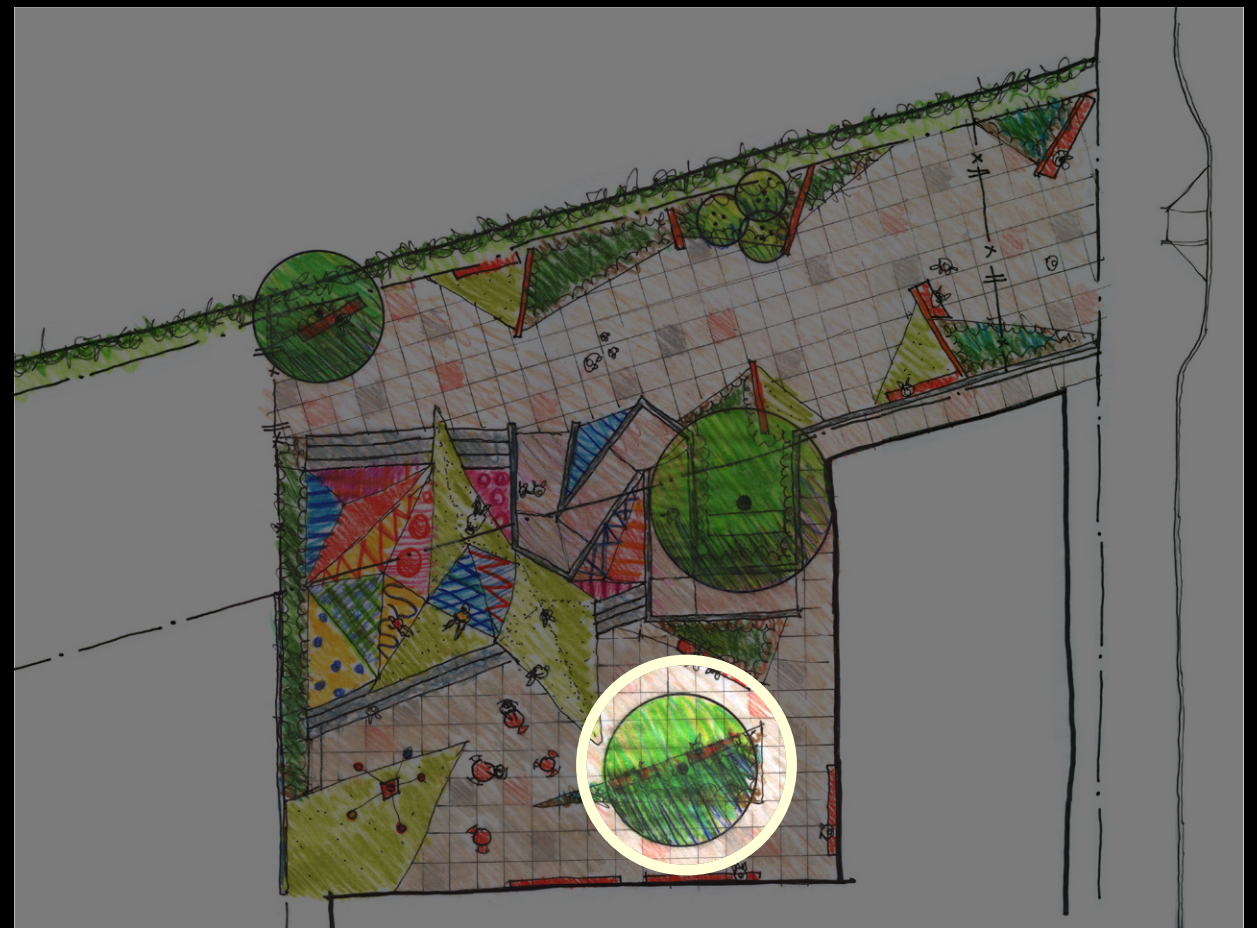


Shade





# Shade



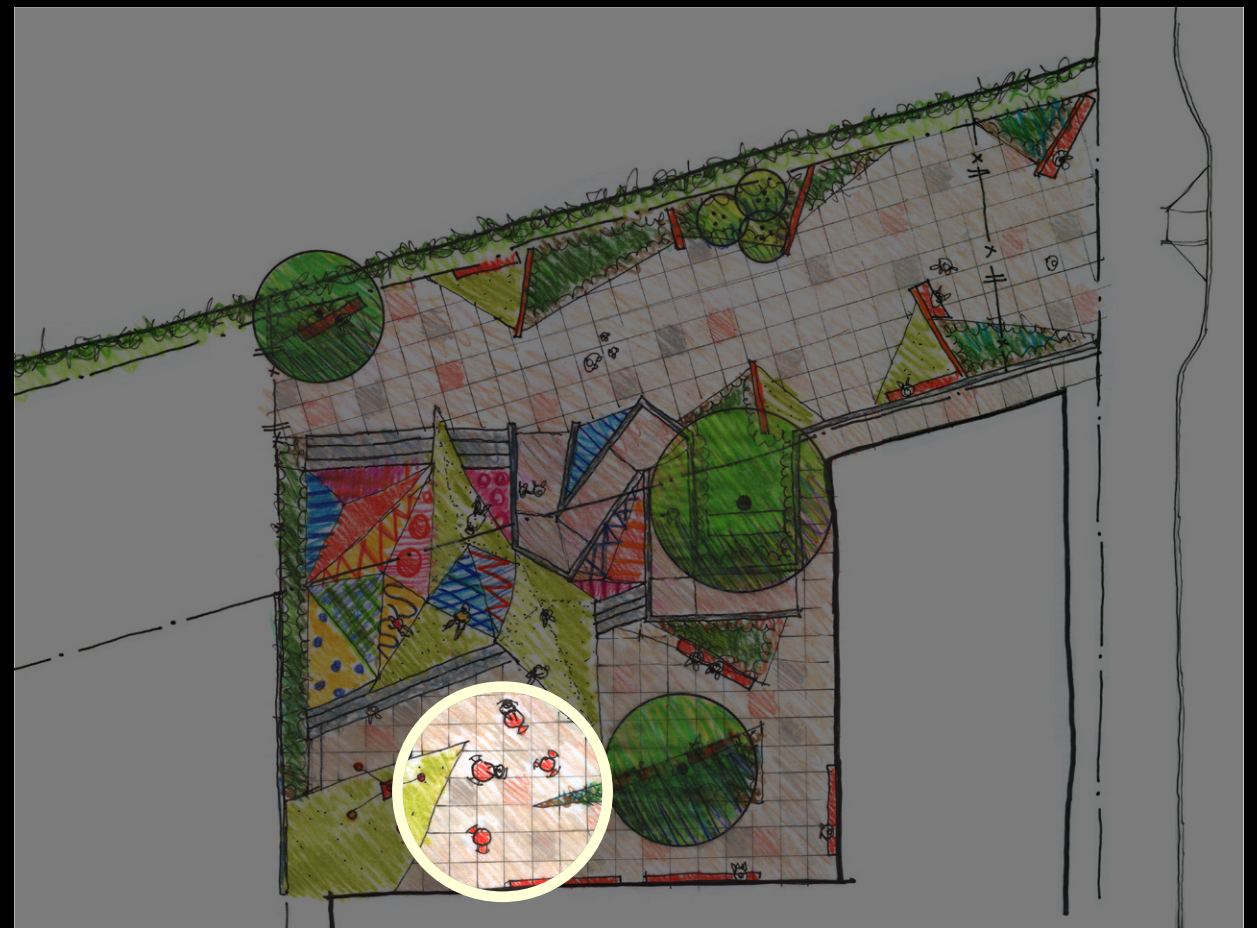


# Movable Seating & Picnic Tables





# Movable Seating & Tables





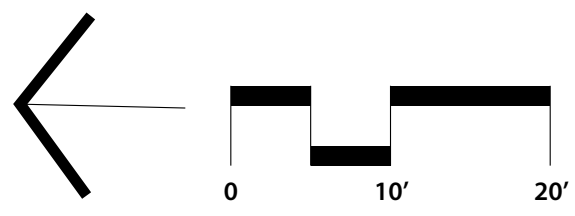
# THE SKOOKUM



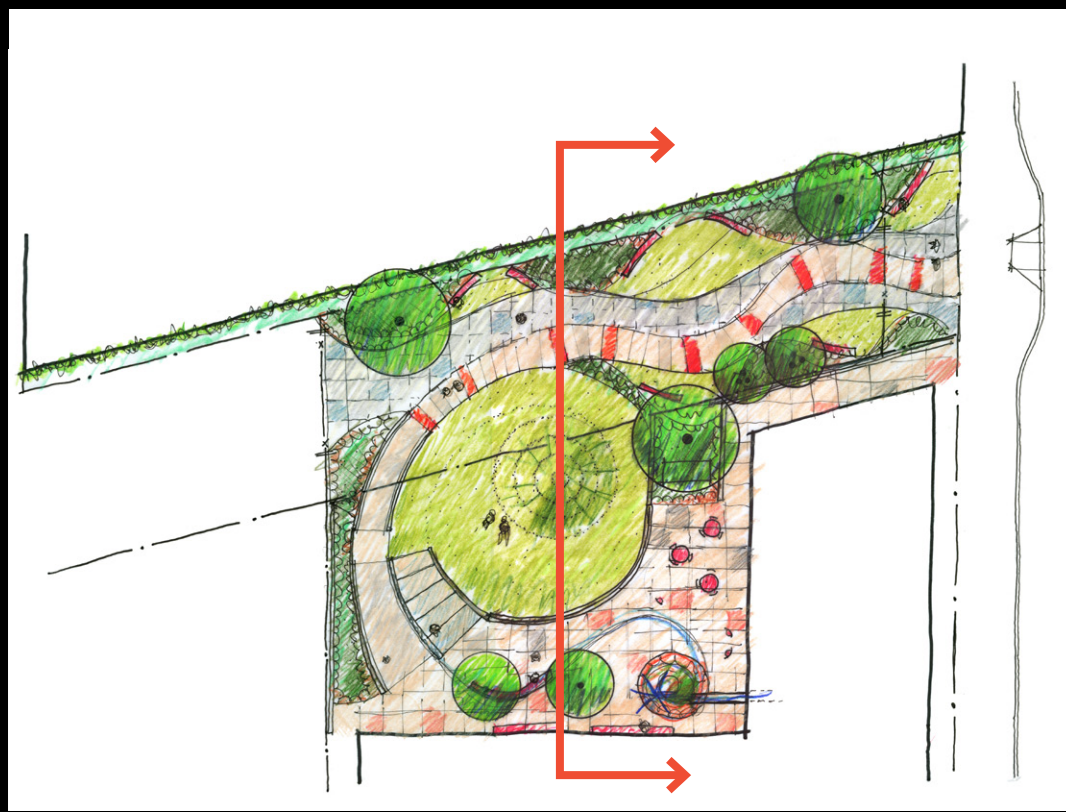
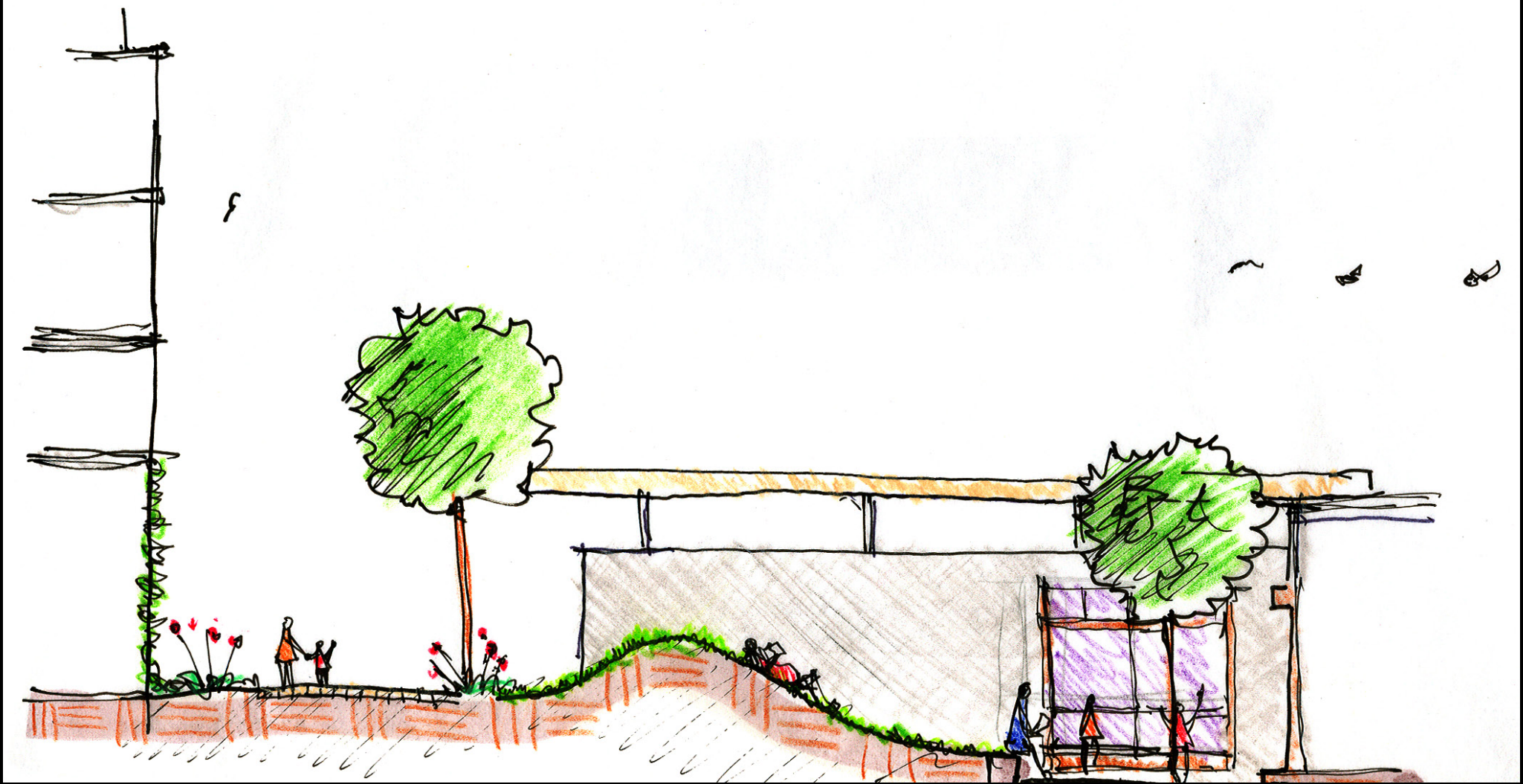


# THE WHIRLIGIG

AVALON BAY PROPERTY



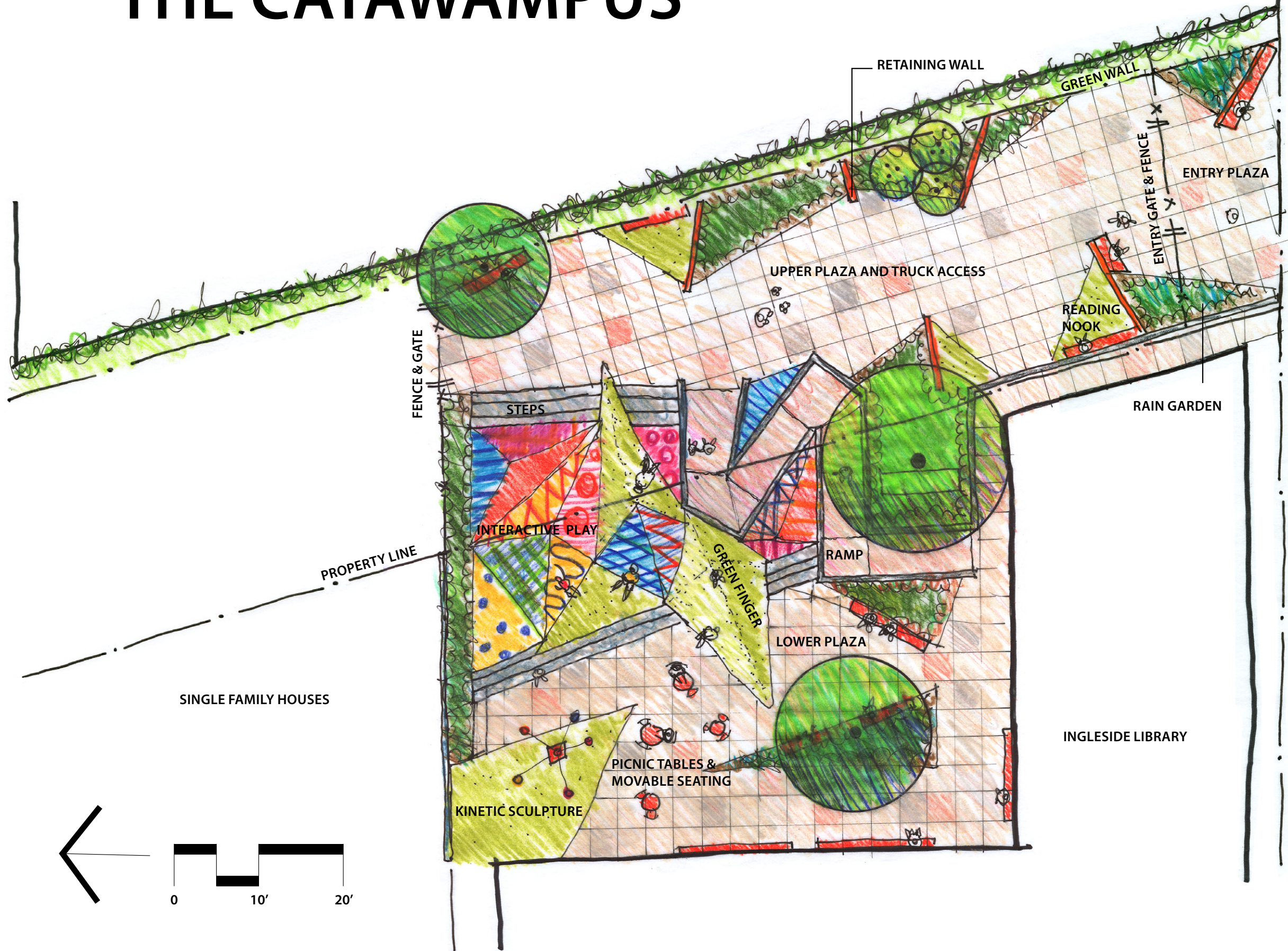






# THE CATAWAMPUS

AVALON BAY PROPERTY







# FIN

## Presentation

[http://www.sf-planning.org/ftp/files/Citywide/Ingleside\\_Library\\_Park/InglesidePresentation\\_v2.pdf](http://www.sf-planning.org/ftp/files/Citywide/Ingleside_Library_Park/InglesidePresentation_v2.pdf)

## Boards

[http://www.sf-planning.org/ftp/files/Citywide/Ingleside\\_Library\\_Park/ingesideBoards\\_v2.pdf](http://www.sf-planning.org/ftp/files/Citywide/Ingleside_Library_Park/ingesideBoards_v2.pdf)