

22nd St Green Connection

DOGPATCH - NW POTRERO GREEN BENEFIT DISTRICT | 10 FEBRUARY 2016

SAN FRANCISCO
**PUBLIC
WORKS**



San Francisco
Planning

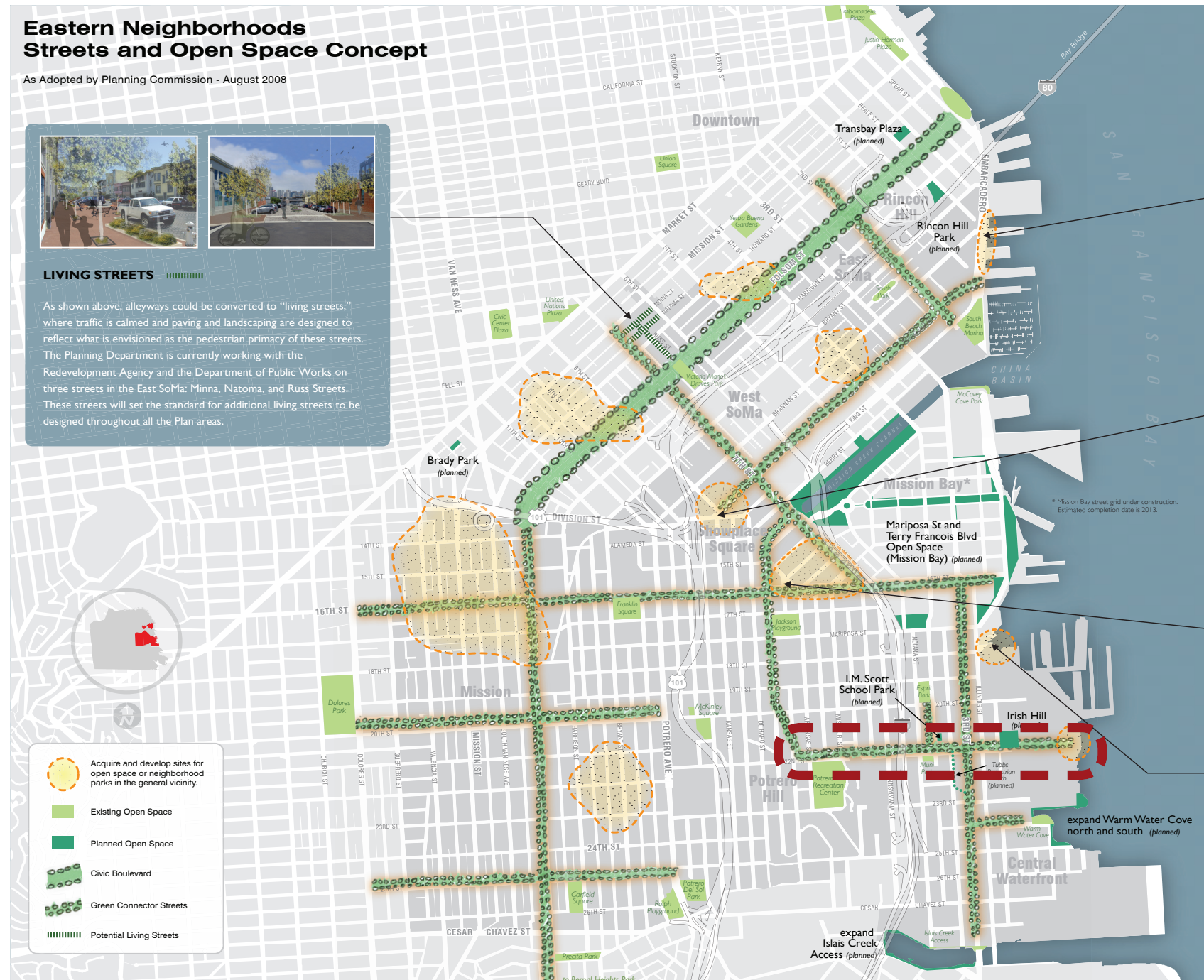
TONIGHT'S TOPICS

1. Policy Background
2. Conceptual Design
3. Design Elements & Cost Estimates
4. Block-by-Block Overview
5. Timeline & Next Steps

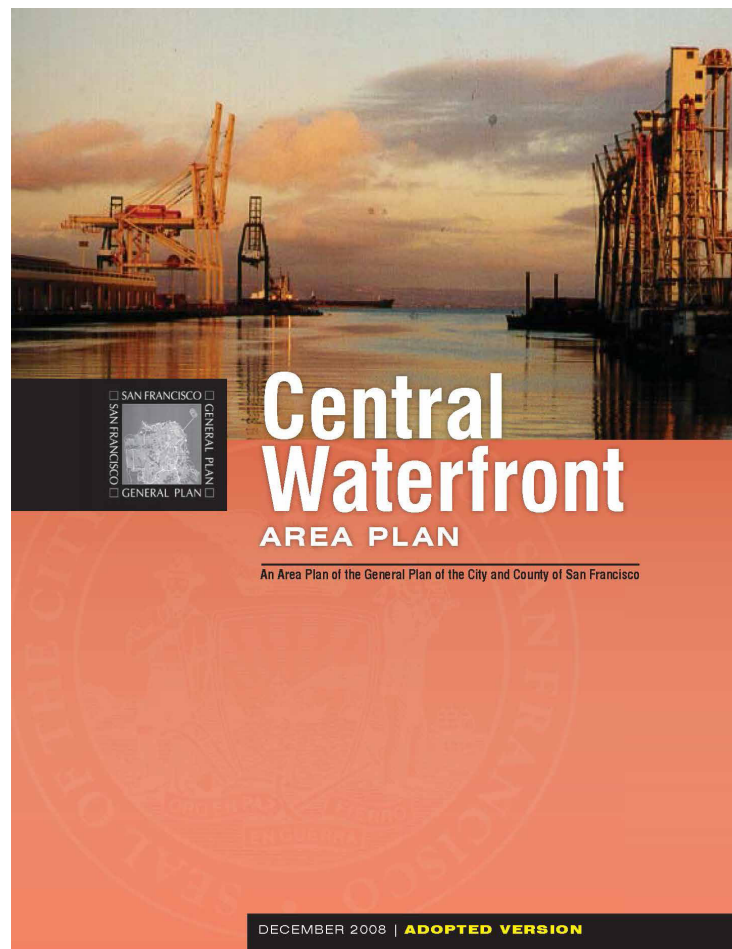
Policy Background

AUG 2008	Eastern Neighborhoods Program (SF Planning Department)
DEC 2008	Central Waterfront Area Plan (SF Planning Department)
JUN 2010	San Francisco Better Streets Plan (City of SF)
MAY 2011	22nd Street Greening Master Plan (DNA, GreenTrustSF, Fletcher Studios)
NOV 2013	Green Vision Plan (Dogpatch - NW Potrero Hill Green Benefit District)
MAR 2014	Green Connections (City of SF)
ONGOING	Central Waterfront - Dogpatch Public Realm Plan (SF Planning Department)

Eastern Neighborhoods Program



Central Waterfront Area Plan



OBJECTIVE 5.3

Create a network of green streets that connects open spaces and improves the walkability, aesthetics, and ecological sustainability of the neighborhood.

POLICY 5.3.1

Redesign underutilized portions of streets as public open spaces, including widened sidewalks or medians, curb bulb-outs, “living streets” or green connector streets.

POLICY 5.3.2

Maximize sidewalk landscaping, street trees and pedestrian scale street furnishing to the greatest extent feasible.

POLICY 5.3.3

Design intersections of major streets to reflect their prominence as public spaces.

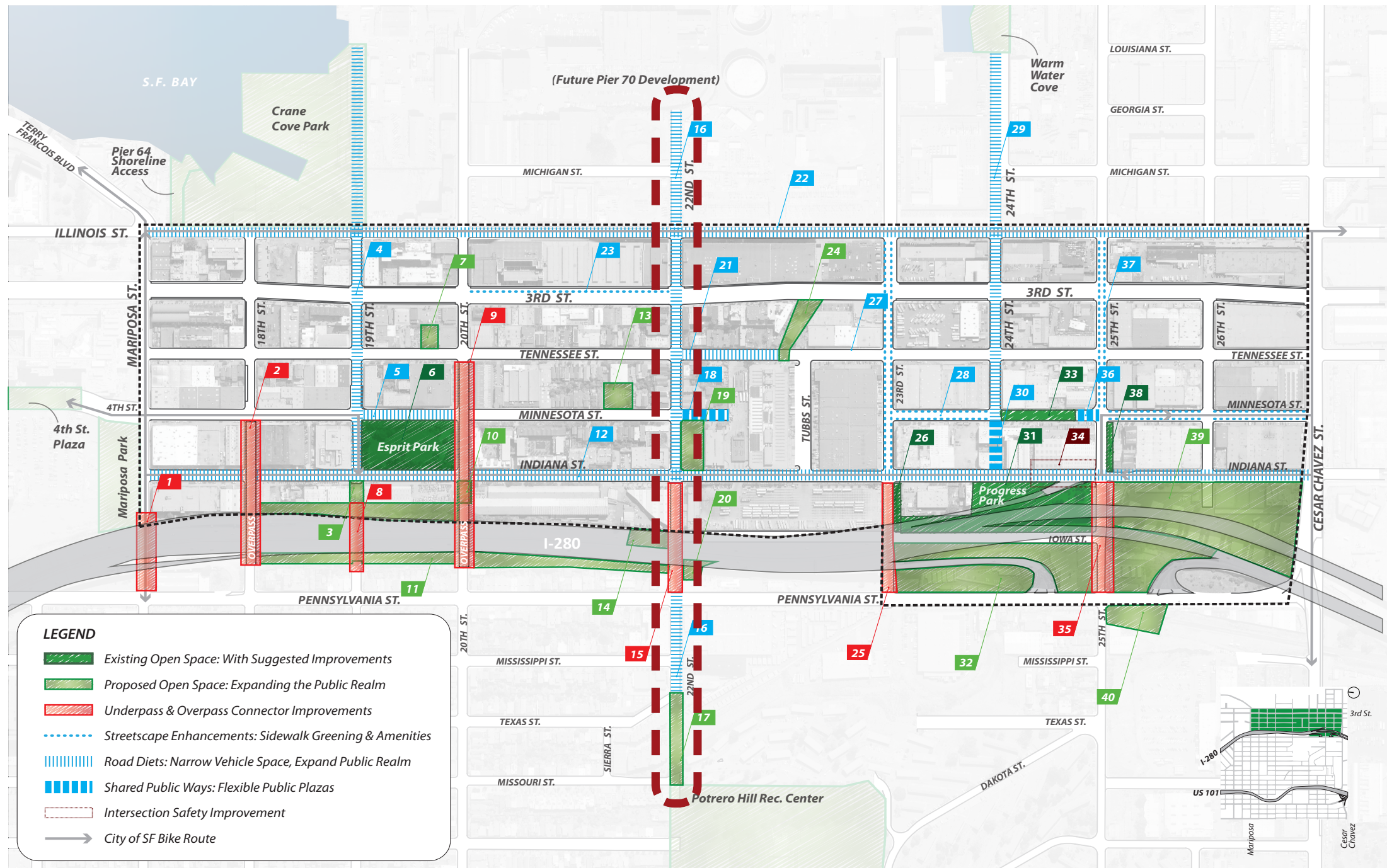


Central Waterfront - Dogpatch Public Realm Plan



sf-planning.org/CentralWaterfrontPRP

Dogpatch - NW Potrero Hill GBD Vision Plan



UP Urban and
CMG Landscape
Architecture, with
DNA and
Potrero Boosters,
October 2013

22nd Street Greening Master Plan

I A M P Ax 25

THE MASTER PLAN



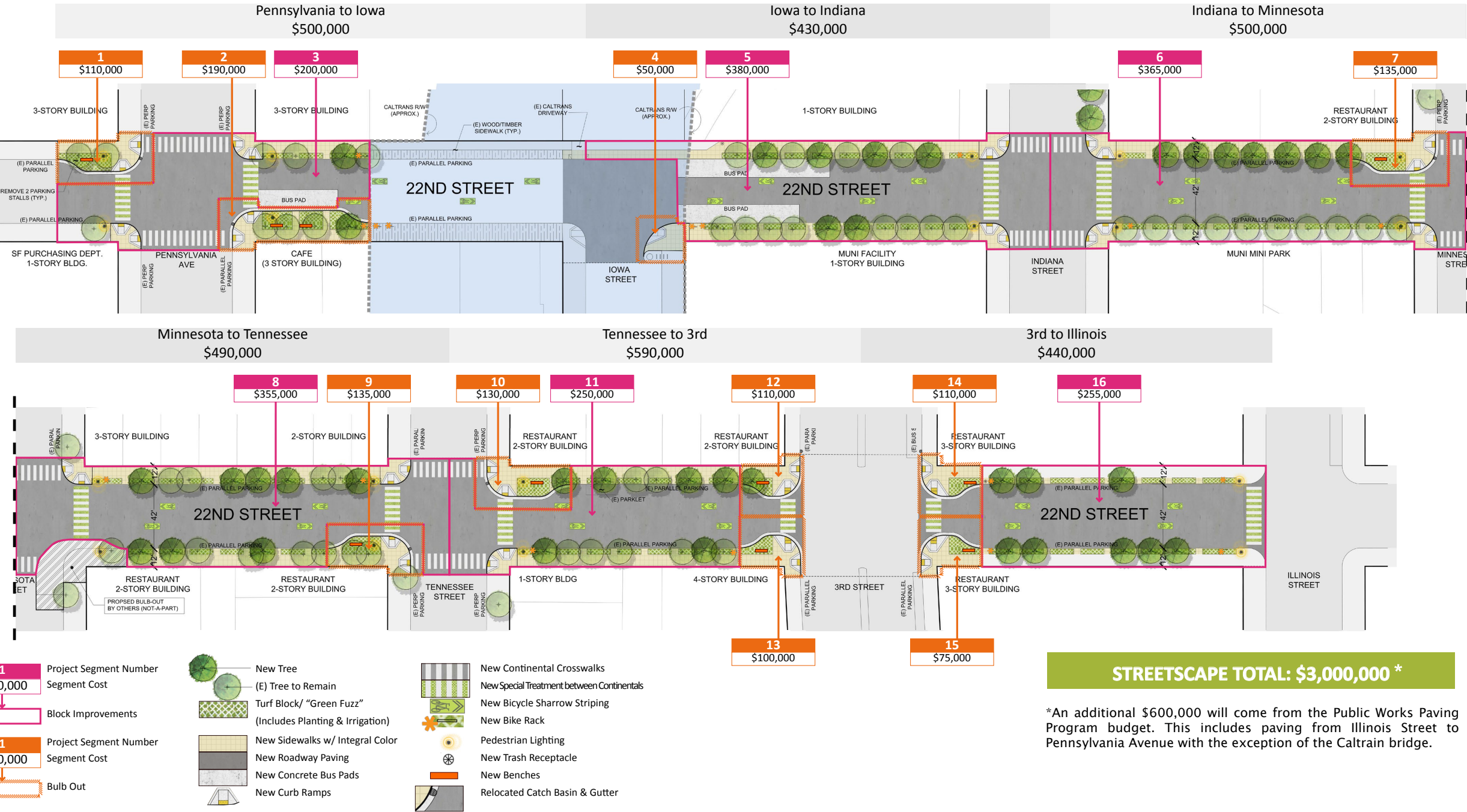
MASTER PLAN

GreenTrustsf 22ND STREET GREENING MASTER PLAN

Fletcher Studio and Nelson/Nygaard, for Greent Trust SF and the San Francisco Parks Trust, May 2011

Conceptual Design

from SEPTEMBER 2015



Conceptual Design Cost Estimate

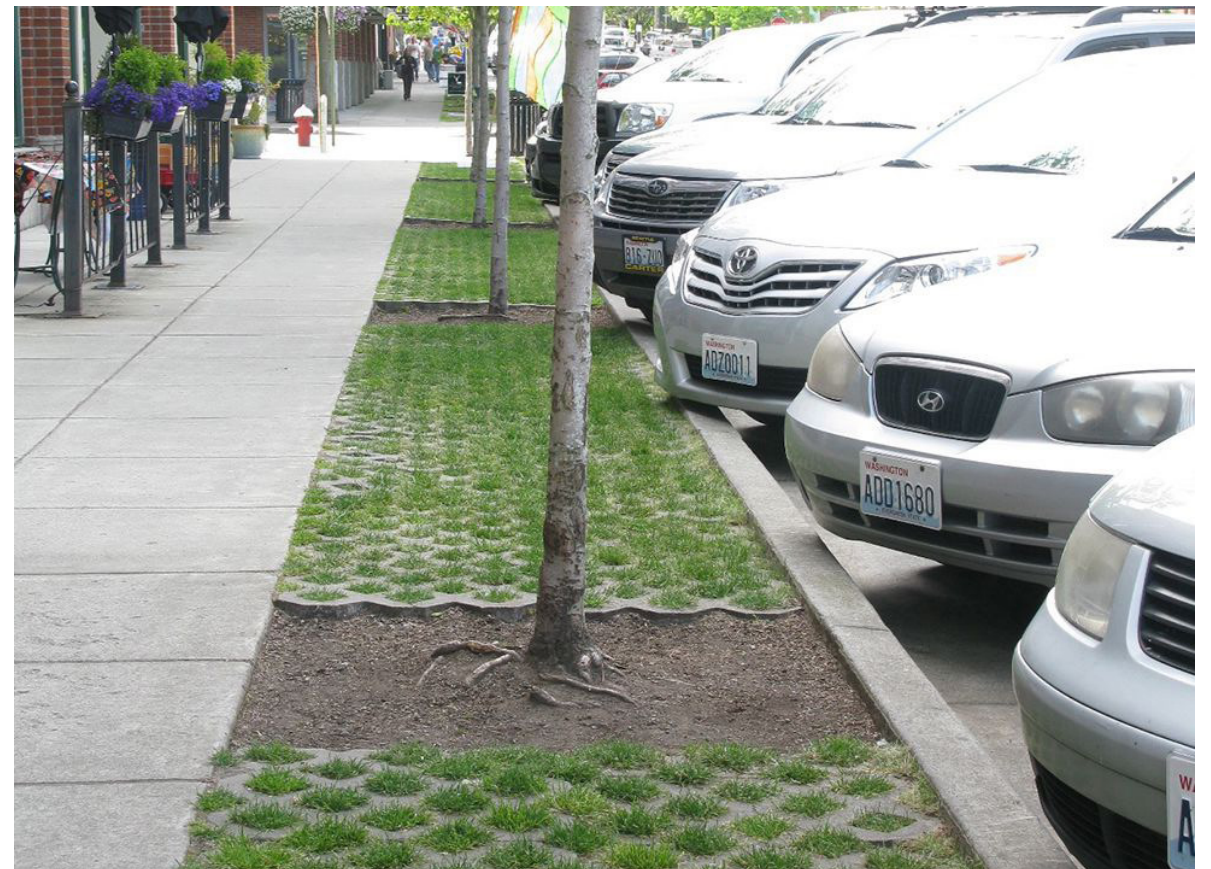
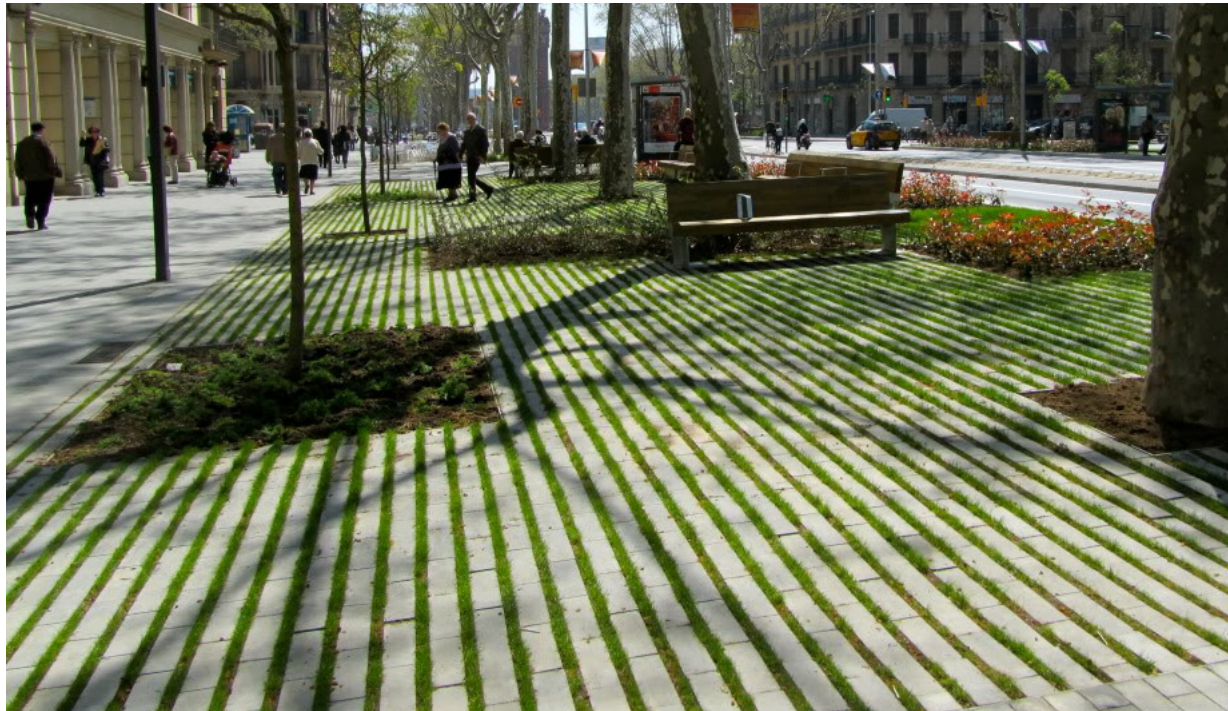
from SEPTEMBER 2015

FEATURES

- 6** Blocks of Repaving (\$600,000 from Paving Program)
- 19,400 SF** New Sidewalks w/ Integral Color
- 9** Bulb-outs
- 42** New Street Trees
- 3** Year Maintenance for New Trees
- 7,150 SF** Permeable Paving
- 7,150 SF** Low-maintenance, Drought Tolerant Planting
- 7,150 SF** Irrigation
- 1,855 SF** Special Treatment at Crosswalks @ 6 Intersections
- 18** New Pedestrian Light Fixtures (& Conduit) @ Intersections
- 24** Painted Sharrows
- 21** Bike Posts
- 4** Trash Receptacles (at Bus Stops)

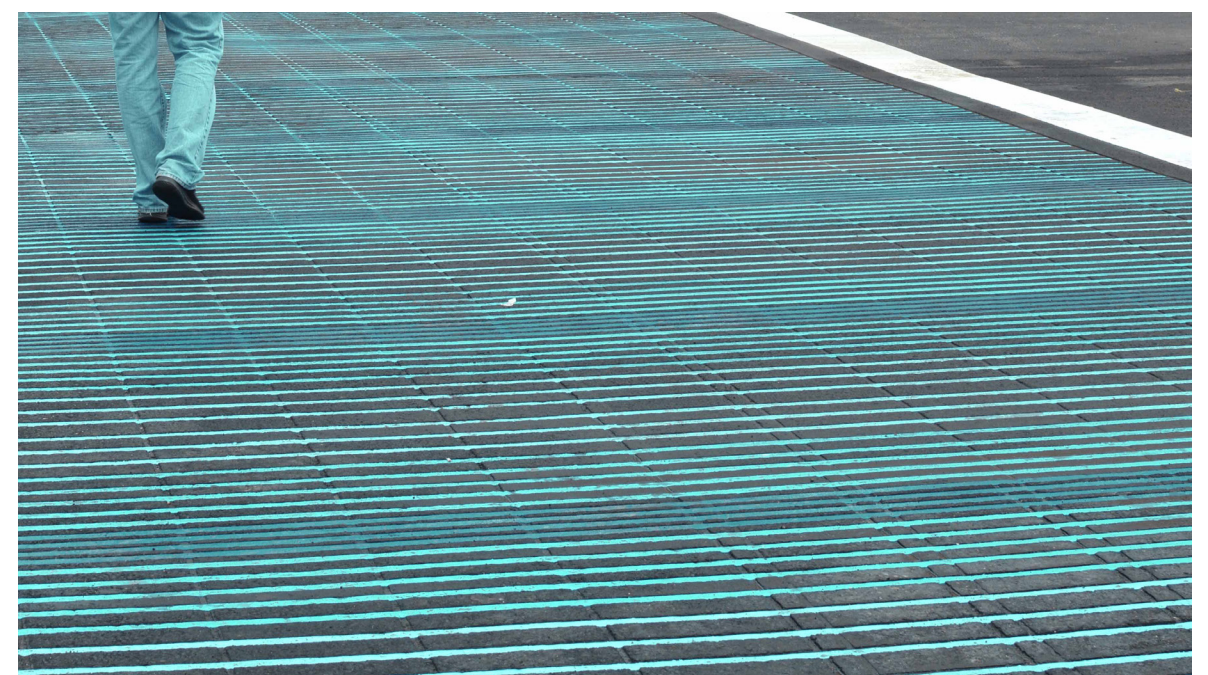
Conceptual Design Elements

STREETSCAPE GREENING



Conceptual Design Elements

INTERSECTION IMPROVEMENTS



Conceptual Design Elements

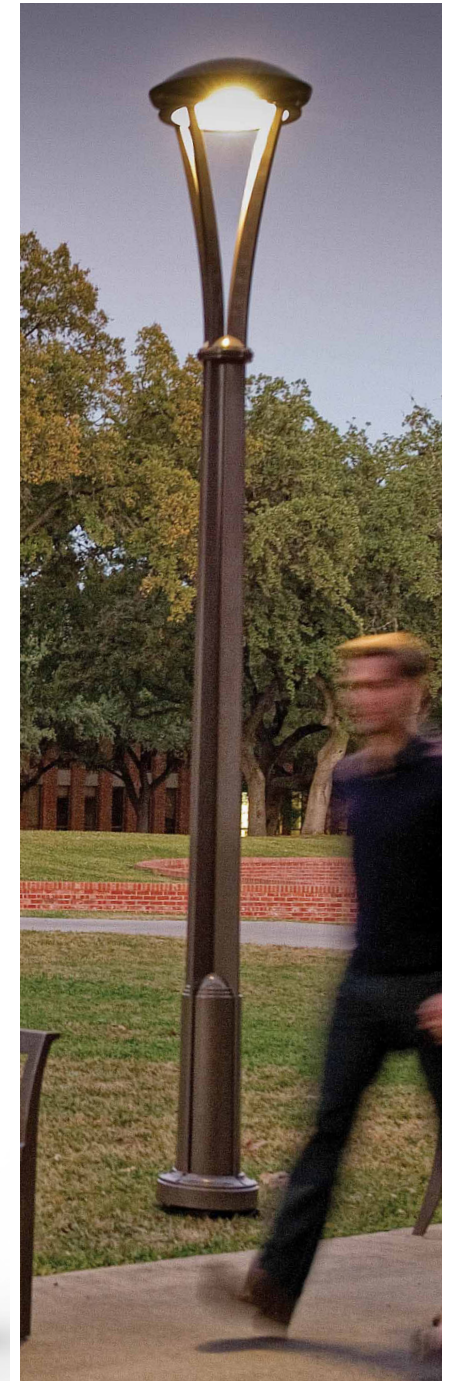
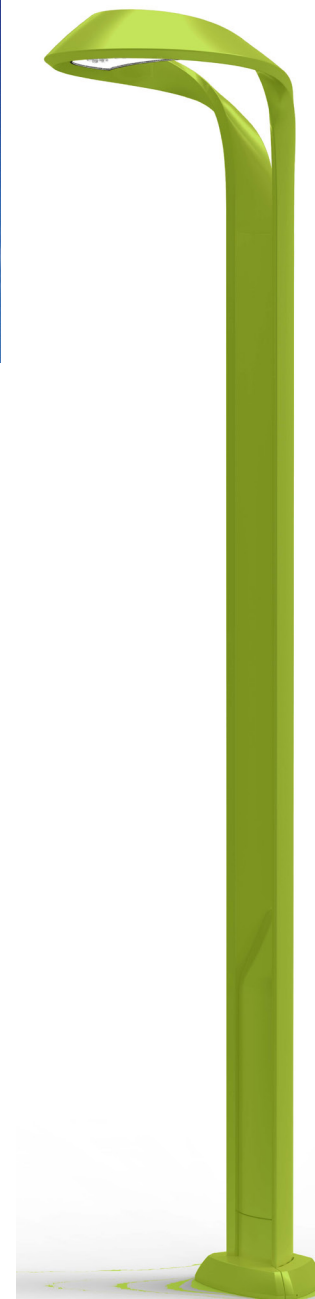
SEATING PROGRAM



Conceptual Design Elements

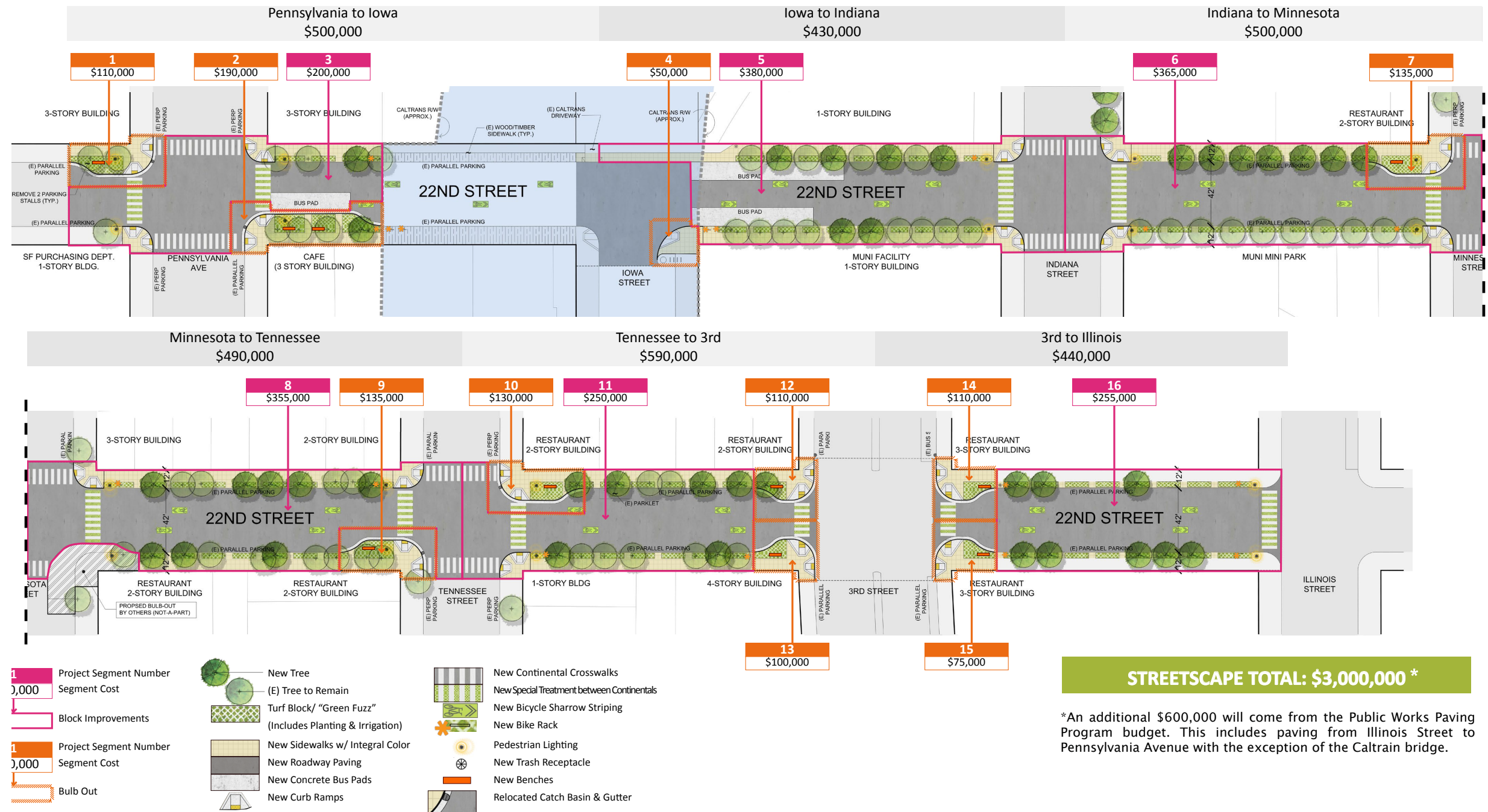
BICYCLE INFRASTRUCTURE

PEDESTRIAN LIGHTING



Conceptual Design Cost Estimate

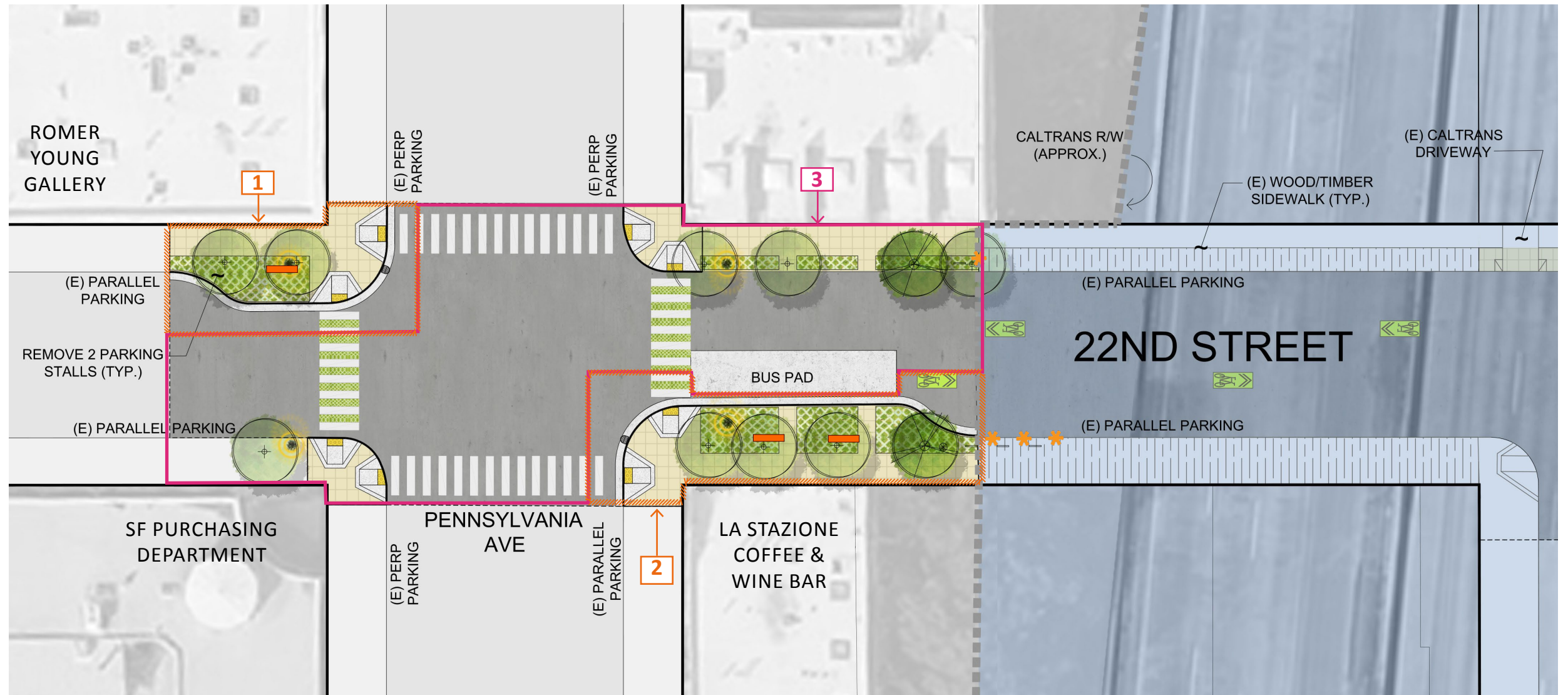
from SEPTEMBER 2015



*An additional \$600,000 will come from the Public Works Paving Program budget. This includes paving from Illinois Street to Pennsylvania Avenue with the exception of the Caltrain bridge.

Conceptual Design Enlargements

from SEPTEMBER 2015



Cost	Amenities Include:
1 \$110,000	Paving, Bulb-out & Curb Ramps, 1 Ped Light, Turf Block & Planting
2 \$190,000	Paving, Bulb-out & Curb Ramps, 1 Ped Light, 1 New Tree, Turf Block & Planting
3 \$200,000	Paving, (& Bus Pad) 2 Ped Lights, 1 New Tree, Turf Block & Planting

Conceptual Design Enlargements

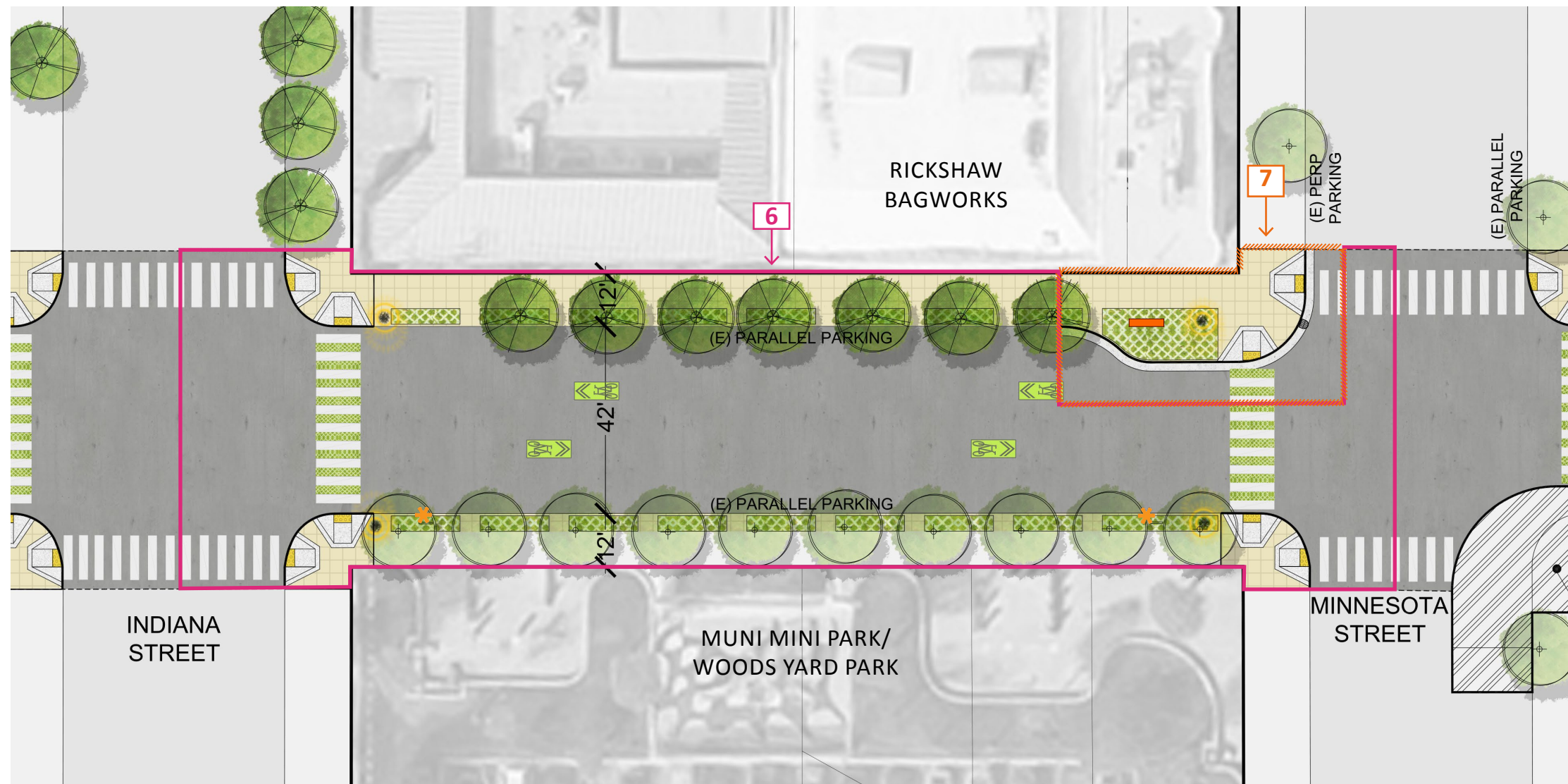
from SEPTEMBER 2015



Cost	Amenities Include:
4 \$50,000	Bulb-out & Curb Ramp
5 \$380,000	Paving (& Bus Pads), 2 Ped Lights, 6 New Trees, Turf Block & Planting

Conceptual Design Enlargements

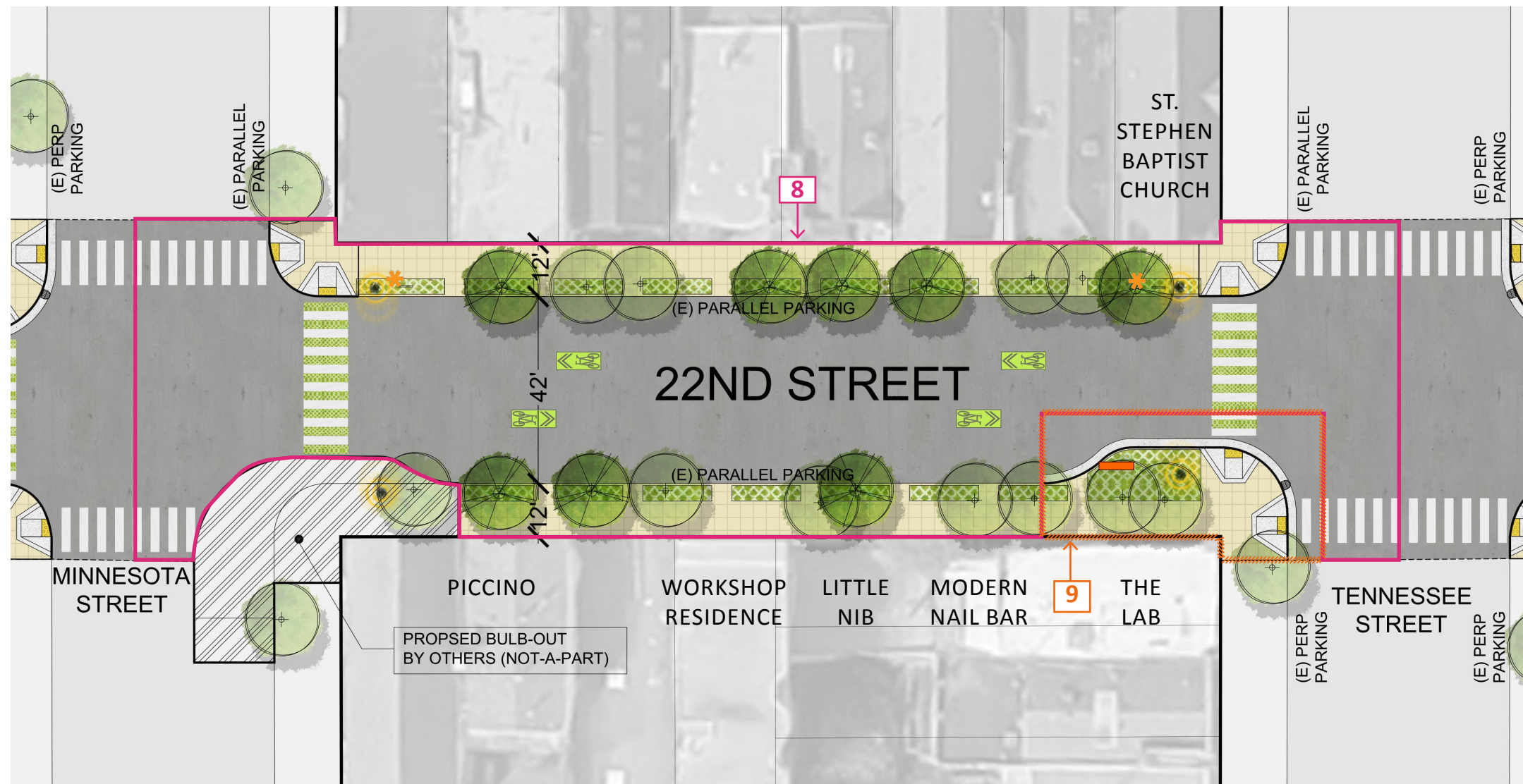
from SEPTEMBER 2015



Cost	Amenities Include:
6 \$365,000	Paving, 3 Ped Lights, 7 New Trees, Turf Block & Planting
7 \$135,000	Paving, Bulb-out & Curb Ramps, 1 Ped Light, Turf Block & Planting

Conceptual Design Enlargements

from SEPTEMBER 2015



Cost

Amenities Include:

8 \$355,000

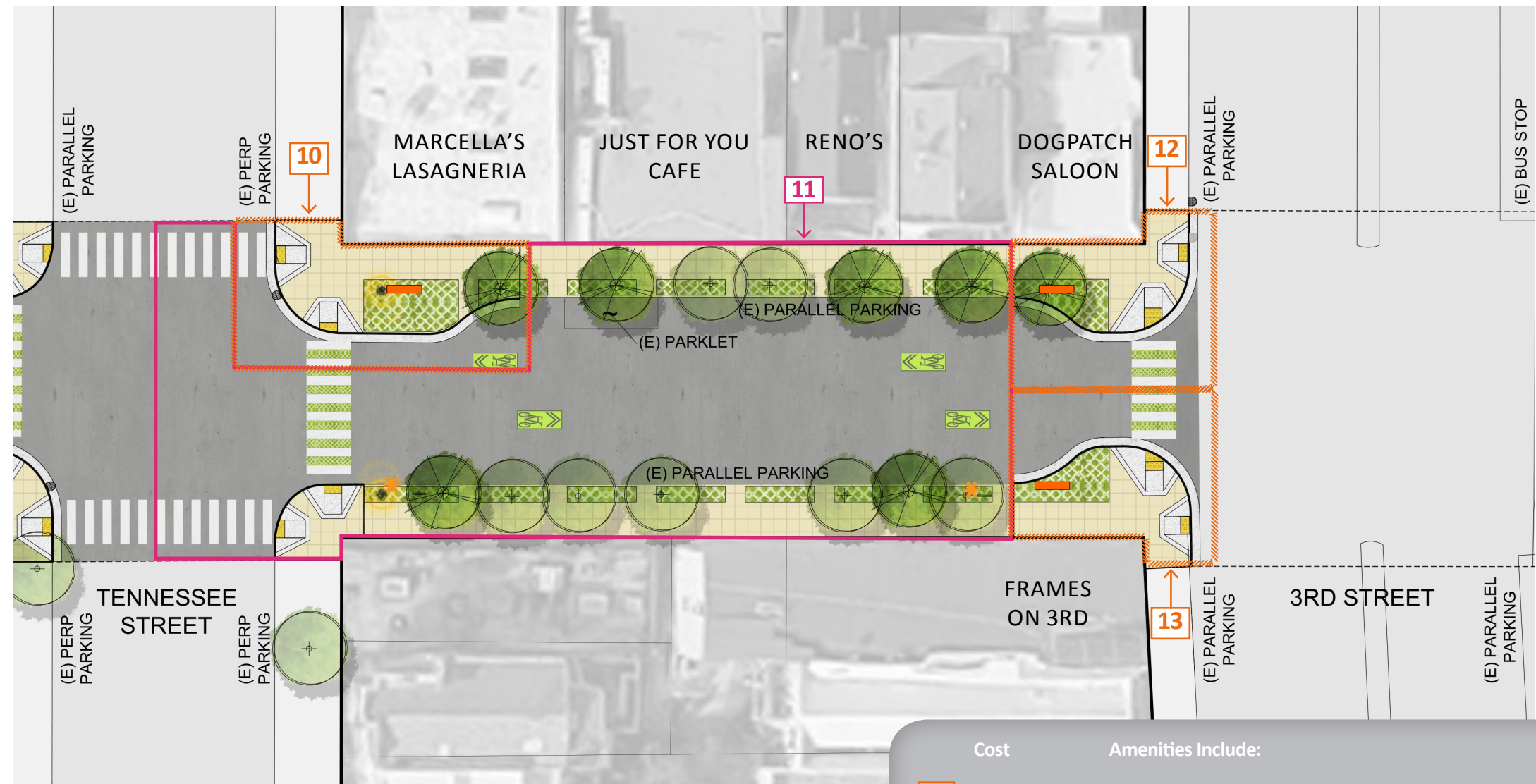
Paving, 3 Ped Lights, 8 New Trees, Curb Ramps, Turf Block & Planting

9 \$135,000

Paving, Bulb-out & Curb Ramps, 1 Ped Light, Turf Block & Planting

Conceptual Design Enlargements

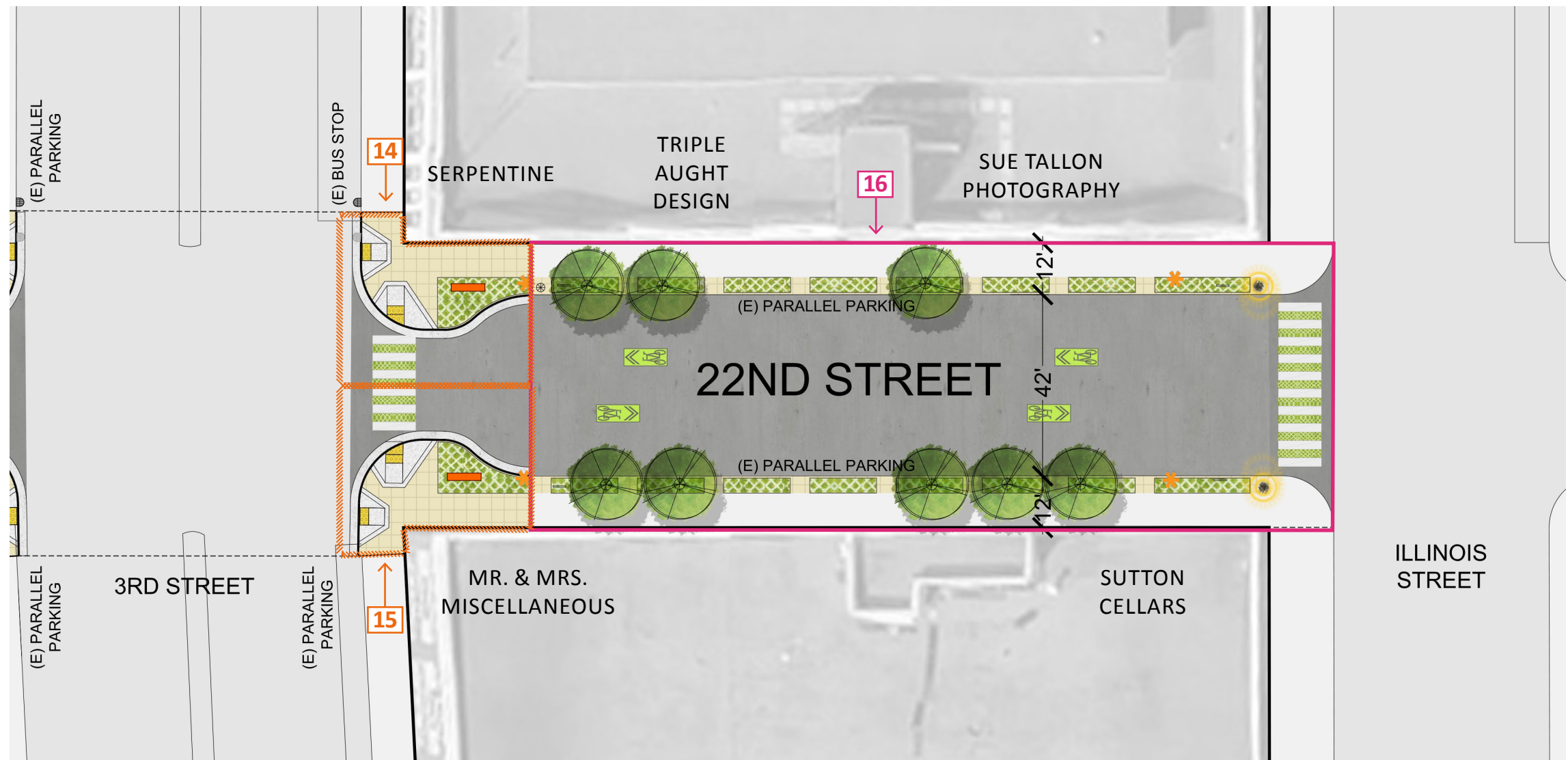
from SEPTEMBER 2015



Cost	Amenities Include:
10 \$130,000	Paving, Bulb-out & Curb Ramps, 1 Ped Light, 1 New Tree, Turf Block & Planting
11 \$250,000	Paving, Curb Ramps, 1 Ped Light, 5 New Trees, Turf Block & Planting
12 \$110,000	Paving, Bulb-out & Curb Ramps, 1 New Tree, Turf Block & Planting
13 \$100,000	Paving, Bulb-out & Curb Ramps, Turf Block & Planting

Conceptual Design Enlargements

from SEPTEMBER 2015



Cost	Amenities Include:
14 \$110,000	Paving, Bulb-out & Curb Ramps, Turf Block & Planting
15 \$75,000	Paving, Bulb-out & Curb Ramps, Turf Block & Planting
16 \$255,000	Paving, 2 Ped Lights, 8 New Trees, Turf Block & Planting

22nd Street Green Connection

CONCEPTUAL DESIGN COST ESTIMATE | from SEPTEMBER

ITEM	COST
1 - Green Pedestrian Refuge	\$ 110 k
2 - Green Pedestrian Refuge	\$ 190 k
3 - Street Segment	\$ 200 k
4 - Green Pedestrian Refuge	\$ 50 k
5 - Street Segment	\$ 380 k
6 - Street Segment	\$ 365 k
7 - Green Pedestrian Refuge	\$ 135 k
8 - Street Segment	\$ 355 k
9 - Green Pedestrian Refuge	\$ 135 k
10 - Green Pedestrian Refuge	\$ 130 k
11 - Street Segment, Trees	\$ 250 k
12 - Green Pedestrian Refuge	\$ 110 k
13 - Green Pedestrian Refuge	\$ 100 k
14 - Green Pedestrian Refuge	\$ 110 k
15 - Green Pedestrian Refuge	\$ 75 k
16 - Green Pedestrian Refuge	\$ 255 k
CIVIL ENGINEER'S SURVEY	\$ 50 k
TOTAL PROJECT COST:	\$ 3.0 m

PROGRAMMED FUNDS	AMOUNT
IMPACT FEES - EN CAC	\$ 3.0 M
PUBLIC WORKS PAVING PROG.*	\$ 0.6 M
TOTAL:	\$ 3.6 m

**Funding (~\$600K) for paving from Illinois Street to Pennsylvania Ave (except for the Caltrain bridge) will come from the Public Works Paving Program budget.*

Timeline & Next Steps for 22nd St Project

JUN 2015 - MAR 2016	Neighborhood & GBD Mtgs	
DEC 2015	Funding Confirmed by EN CAC and IPIC	
MAR 9th 2016	Public Realm Plan Community Mtg	
MAR 30th 2016	22nd Street Project Community Mtg	
SPRING 2016	22nd Street Bridge Reconstruction Start	
SPRING 2016	22nd Street Project Design Start	
WINTER 2016 - SUMMER 2017	Contracting	
SUMMER 2017 - SPRING 2018	Construction	

Neighborhood Meetings include monthly meetings with Potrero Dogpatch Merchants' Assn, Dogpatch Neighborhood Assn, Potrero Boosters Neighborhood Assn, and Dogpatch - NW Potrero GBD Board.



www.sf-planning.org/CentralWaterfrontPRP

robin.abad@sfgov.org / 415-575-9123

kelli.rudnick@sfdpw.org / 415-558-4489