

Subject: Central Waterfront / Dogpatch Public Realm Plan

From: San Francisco Planning Department [<mailto:sfplanning@public.govdelivery.com>]

Sent: Thursday, July 09, 2015 2:00 PM

Subject: Courtesy Copy: Central Waterfront / Dogpatch Public Realm Plan

This is a courtesy copy of an email bulletin sent by Robin Abad.

This bulletin was sent to the following groups of people:

Subscribers of Central Waterfront/Dogpatch Public Realm Plan, Potrero Hill (396 recipients)

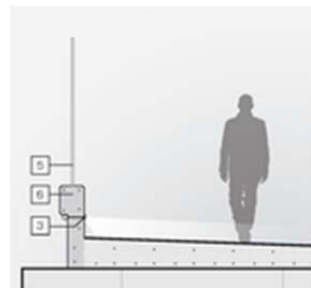


Vote to Prioritize Projects!



Help the City prioritize projects for capital funding! [Click here to see a map of project ideas and to vote](#) on your top five. The online poll will help guide impact fees and other funding sources to the projects you think are most urgent.

Update on Caltrain bridge lighting



Thanks to the work of local citizens and architects volunteering some design expertise, pedestrian lighting could be part of the Caltrain's replacement of the 22nd and 23rd Street Bridges. Express your support contacting District 10 Supervisor Malia Cohen at Malia.Cohen@sfgov.org or 415-554-7670.

How to get a crosswalk installed



At neighborhood meetings, community members have repeatedly expressed the need for crosswalks. Submit these to SFMTA by filling out [Request for Service on 311](#). Make sure to be specific about the intersection(s) you are concerned with.

Webpage recently updated!

Curious about how the Central Waterfront - Dogpatch Public Realm Plan will help deliver public space improvements to the Dogpatch? Questions about timeline or projects? Be sure to check the [Public Realm Plan webpage](#) for updates on all of the latest news. Handouts and presentations from neighborhood meetings are also available for download.






For more information, contact Robin Abad, Project Manager, at Robin.Abad@sfgov.org.

中文詢問請電: (415) 575-9010

Para información en Español llamar al: (415) 575-9010

Para sa impormasyon sa Tagalog tumawag sa: (415) 575-9121

Please do not Reply to this automated email.

San Francisco QUESTIONS? STAY CONNECTED:
Planning [Contact Us](#) or email planningnews@sfgov.org     

SUBSCRIBER SERVICES:
[Manage Preferences](#) | [Unsubscribe](#) | [Help](#)