

The Public Realm:
Parks, Open Space, and Streetscapes

Balboa Reservoir
Community Advisory Committee Meeting
October 19, 2015

What is the public realm?

- Network of public streets, pathways, parks and open spaces.
- The quality of our public realm is vital to create an environment where people want to live and work.



Principle #1

Develop a cohesive public realm



Schlage Lock Site Plan

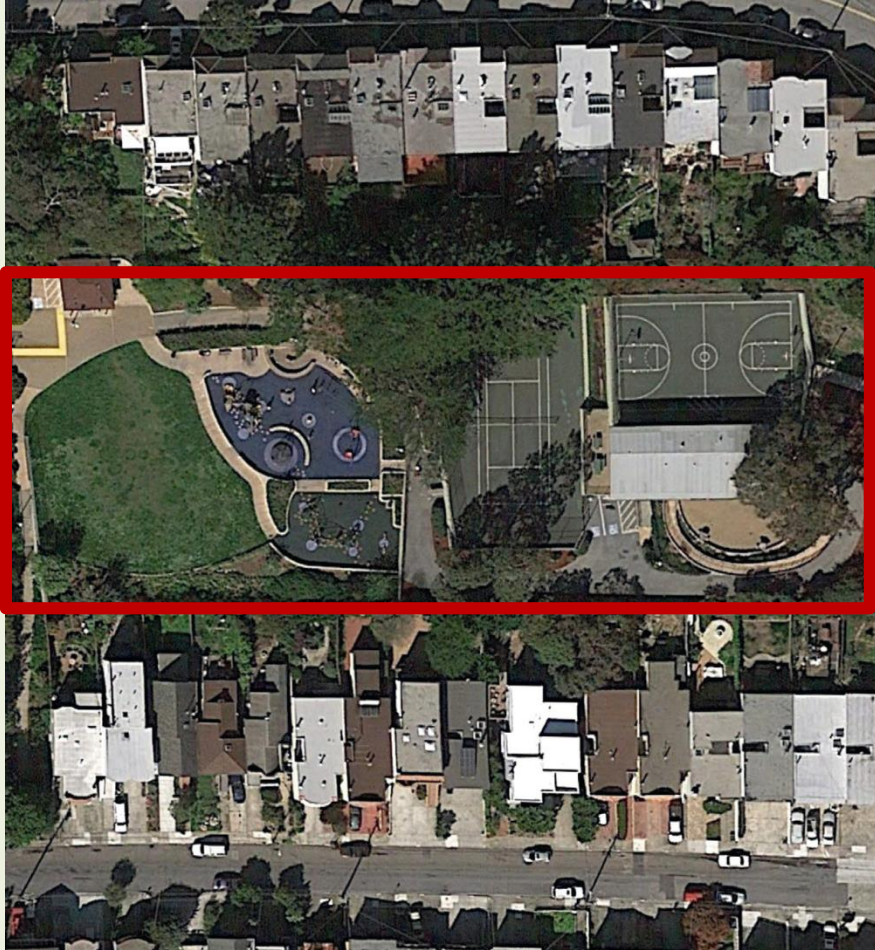
Parameter Highlight:

Total amount of Public Open Space Should be a *Minimum* of 4 acres



Parameter Highlight:

Create one significant open space of at least 1.5 acres



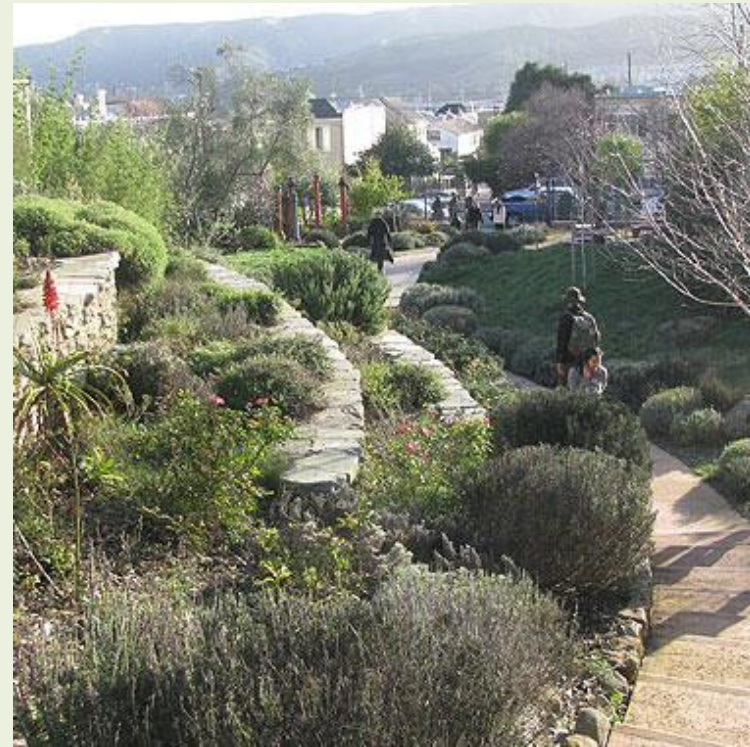
Sunnyside Recreation Center



Minnie and Lovie Ward Recreation Center

Parameter Highlight:

Create network of walking routes.



Parameter Highlight:

Create buffer zone or open space on southern edge of site.

Parameter Highlight:

Consider the childcare facility that may be built on site and its needs for open space.



Principle #2

Design the public realm as a useful, safe and welcoming part of daily experience for diverse neighbors of all ages, visitors to the site, and CCSF affiliates.



Parameter Highlight:

Incorporate linear spaces, smaller common areas, courtyards and/or mid-block alleys into the site and buildings to moderate building scale



Principle #3

Incorporate the different needs and hours of activity for diverse users in the area.



Parameter Highlight:

Design sight lines between caregivers and open spaces



Principle #4

Privately owned public spaces should read as part of an overall, coordinated pattern of open space. Require generous minimum amounts of private open space.



Redwood Park, Privately Owned Public Open Space

Principle #5

Design a variety of open spaces within the public realm network to create a variety of sensory experiences, incorporating the surrounding natural and/or cultural environment into the siting and design.



Principle #6

All public rights of way should be attractive, safe and useable public open spaces with generous landscaping, lighting and greenery as appropriate to the scale and use of buildings



Principle #7

Plan and design in coordination with a long-term, sustainable maintenance plan and community-serving programming.

