

BALBOA AREA: TRANSPORTATION PROJECTS & PLANNING

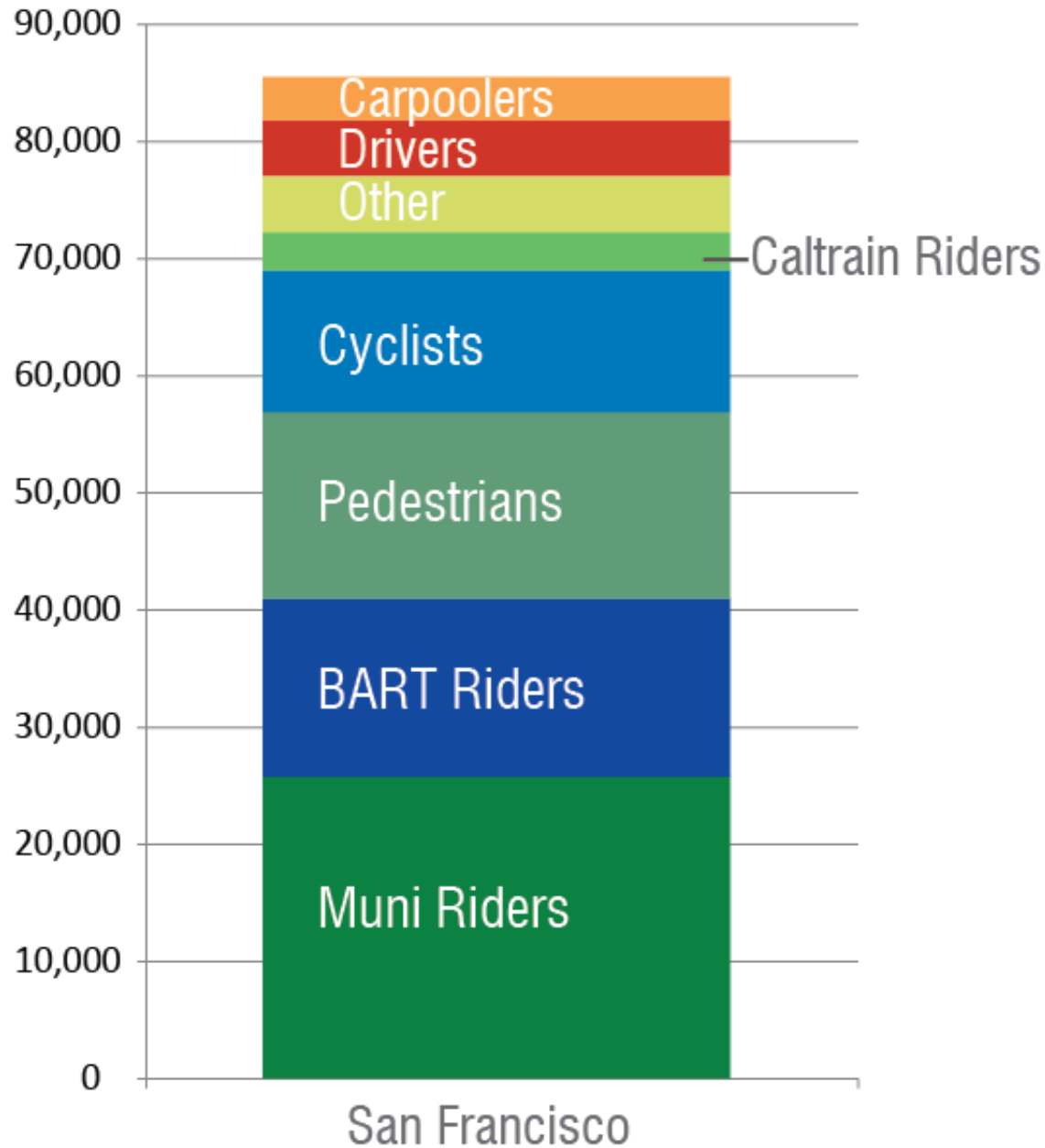


TRANSPORTATION FOR ALL AGES, ABILITIES & MEANS



CHANGING PATTERNS: TRENDING TO WALKING, BIKING, TRANSIT

San Francisco's Change in
Number of Commuters by Mode
(2006-2014)



CITYWIDE: COMPREHENSIVE APPROACH TO GROWING SUSTAINABLY

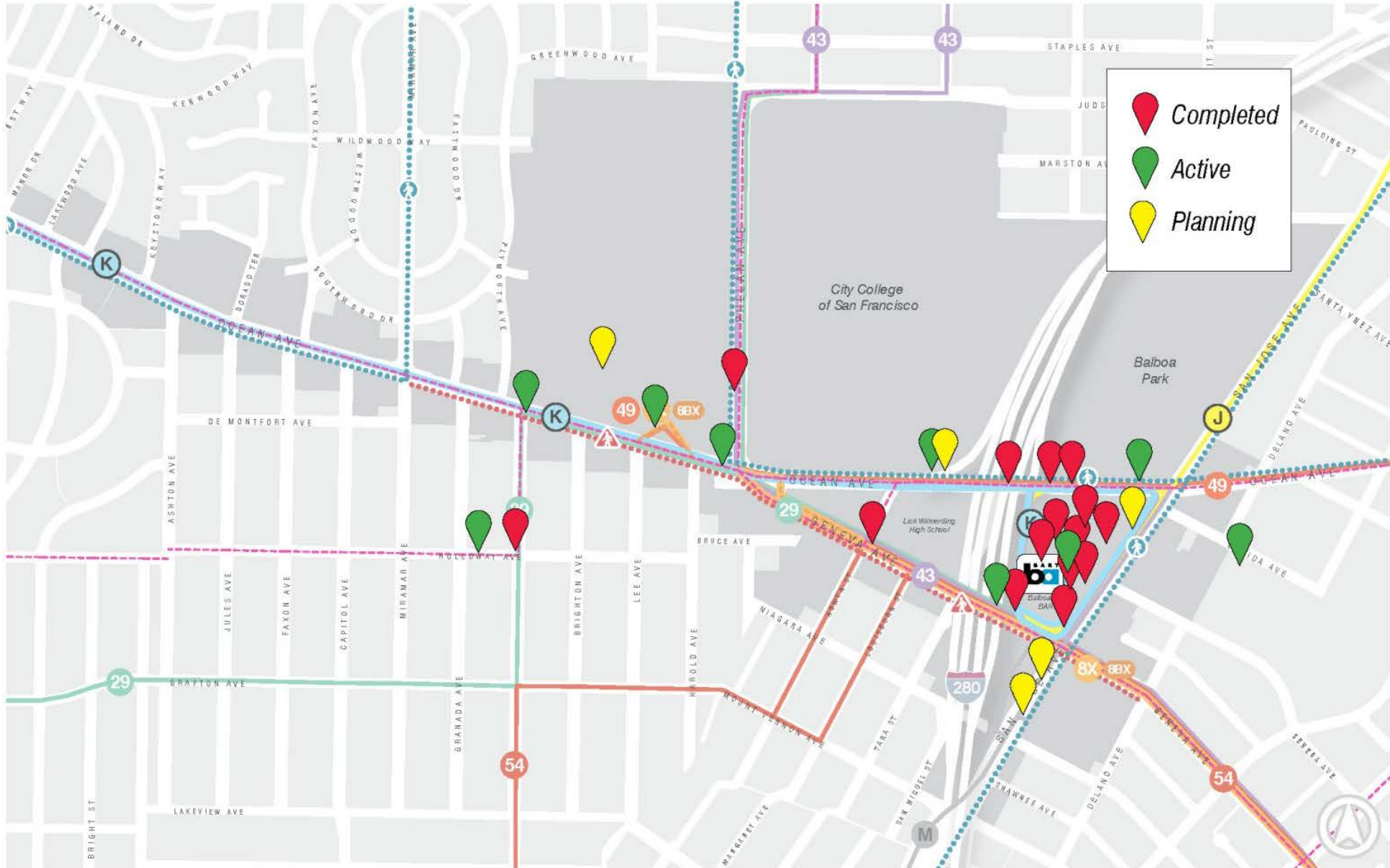
Public investments for existing and future population:

- Transit capital & operations
- Bicycle infrastructure (e.g. protected lanes, parking)
- Pedestrian safety (e.g. Vision Zero, Walk First)
- Demand Management (e.g. bikeshare, shuttles, citywide TDM)

New Development: Transportation Sustainability Program

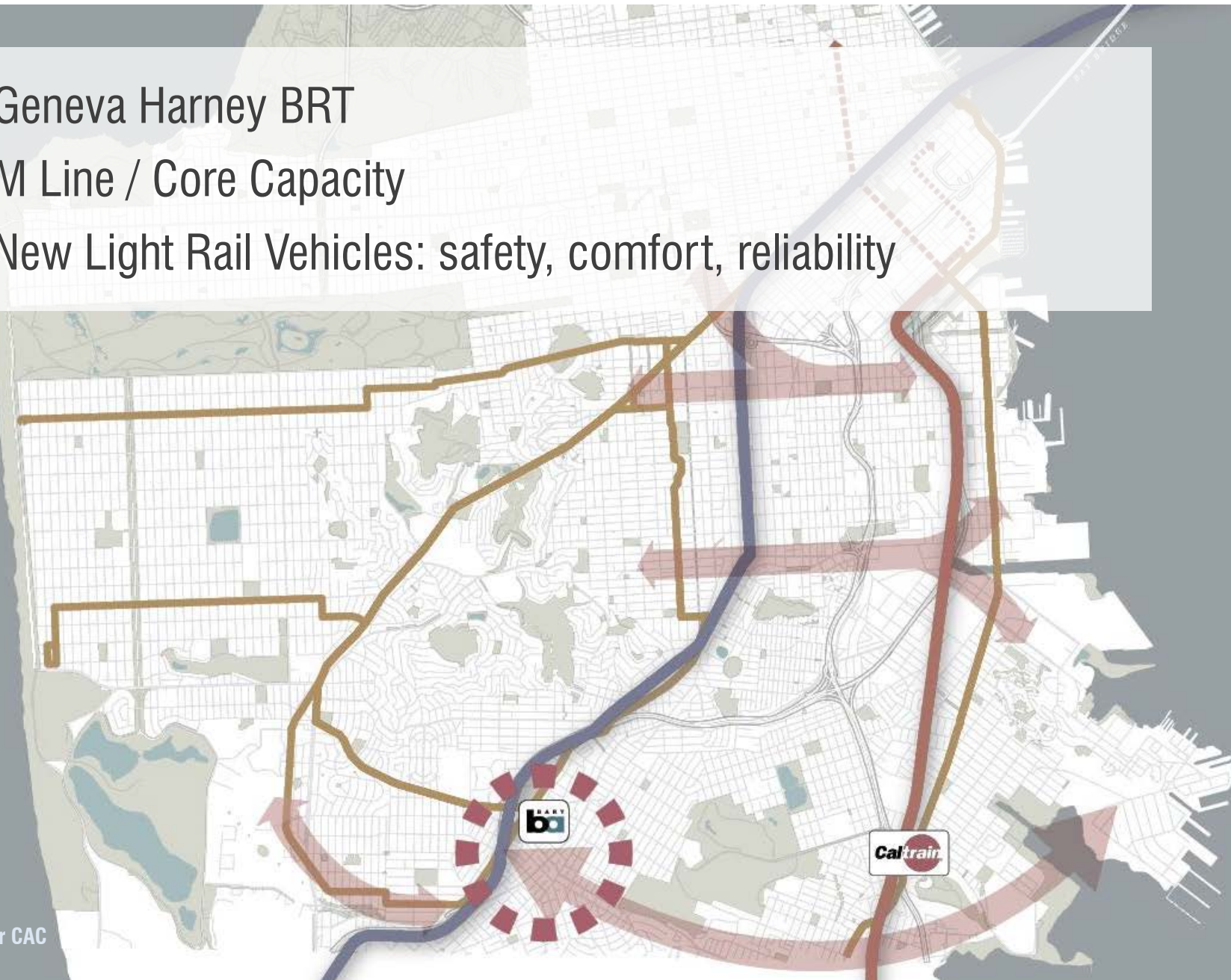
- Assess development's transportation impacts in a more meaningful way and require developers to reduce their impacts and pay their fair share for those impacts

CITY-WIDE AND NEIGHBORHOOD SOLUTIONS IN PROGRESS



FUTURE TRANSIT AND CAPITAL IMPROVEMENTS

- Geneva Harney BRT
- M Line / Core Capacity
- New Light Rail Vehicles: safety, comfort, reliability



OPERATIONAL IMPROVEMENTS

- City College terminal improvements
- Muni Forward :
 - Travel time reductions: 8x, 29, 43, 49, 52, 54, K
 - K Ingleside – added trains during peak
 - 29 – reroute
 - 52 – extension to City College terminal
 - 54 - reroute
 - 8X – corridor improvements: bulbs, stop changes, turn lanes, signal priority
- Curtis Green (Balboa Park) Light Rail Yard & Track Improvements
- Core Capacity Transit Study

BALBOA PARK STATION AREA IMPROVEMENTS

- Balboa Park Station Plaza Improvements
- NextMuni Signs
- Geneva Crosswalk and ADA Improvements
- Pedestrian signals and wayfinding
- Westside Connection
- Ocean Crosswalk improvements
- Bikes lanes and sharrows
- Geneva / Howth Signal

BP STATION AREA IMPROVEMENTS (IN PROGRESS)

- Geneva Avenue
 - Sidewalk widening, median and crosswalk improvements
 - Transit Lanes and access
 - ADA Accessible curbs and paths
 - Relocation of poles off the J/K walkway
 - Resurfacing between San Jose Avenue and I-280
- Ocean Avenue
 - ADA Accessible curbs and paths
 - Improved crossings near I-280 on-ramp
 - Flashing beacon on the I-280 Ocean Avenue off-ramp
 - Streetscape improvements (Manor – Phelan)
- Balboa Park Station
 - Pedestrian lighting and wayfinding signage
 - Eastside Project: walkway, pedestrian bridge, boarding and lighting improvements
 - Balboa Park BART Modernization: head house, kiss and ride, plaza, streetscape
 - Upgrading of the traffic and train signaling system

TRAFFIC SIGNALIZATION AND PEDESTRIAN SAFETY

- Changes/adjustments to Ocean/Phelan traffic signals
- Relocation of pedestrian push button
- New signage installed
- Signal and crosswalk improvements Ocean/Plymouth and Ocean/Miramar



AREA IMPROVEMENTS (CONCEPT PLANS OR IN PLANNING)

CITY COLLEGE OF
SAN FRANCISCO

- **Projects and Concepts**
 - Ocean and Geneva Avenue Streetscape (Phelan to San Jose)
 - Geneva Car Barn
 - Upper Yard
 - Lee Avenue extension, with bike lanes
- **Ongoing Planning**
 - I-280 Off Ramp Study
 - City College Master Plan
 - Reservoir Open Space and Community Design Workshops
 - Balboa Area Transportation Demand Management Plan

SFMTA REQUEST SERVICES

- Residential Parking Permit Program
sfmta.com/services/permits-citations/parking-permits/residential-area-permits/request-permit-area-expansion
- Color Curb Program
sfmta.com/getting-around/parking/curb-colors
- Bike Rack Program
sfmta.com/services/streets-sidewalks/installation-requests/bicycle-racks-corrals
- Traffic Calming Requests
sfmta.com/services/streets-sidewalks/installation-requests/traffic-calming-features
- 311 Traffic, Ped Safety and Transit Concerns
mysf311.org
- SF MOVES
sfmta.com/node/169236

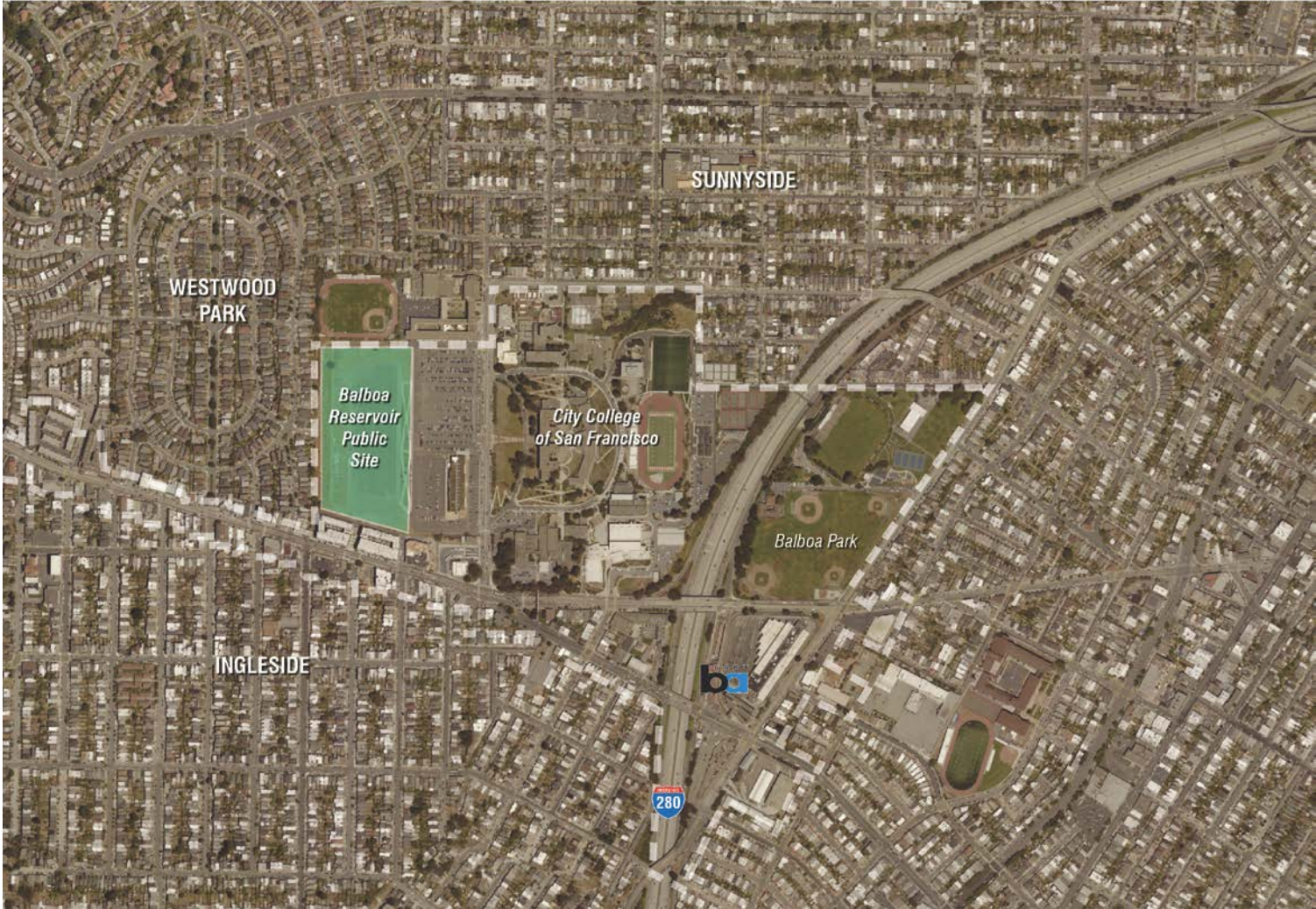
TODAY: COMMENT FORMS

ONGOING PARTICIPATION: BALBOA RESERVOIR CAC

Setting Principles
in RFP

Future Community
Design Workshops
*including streets &
infrastructure*

Future
Environmental
Review Process

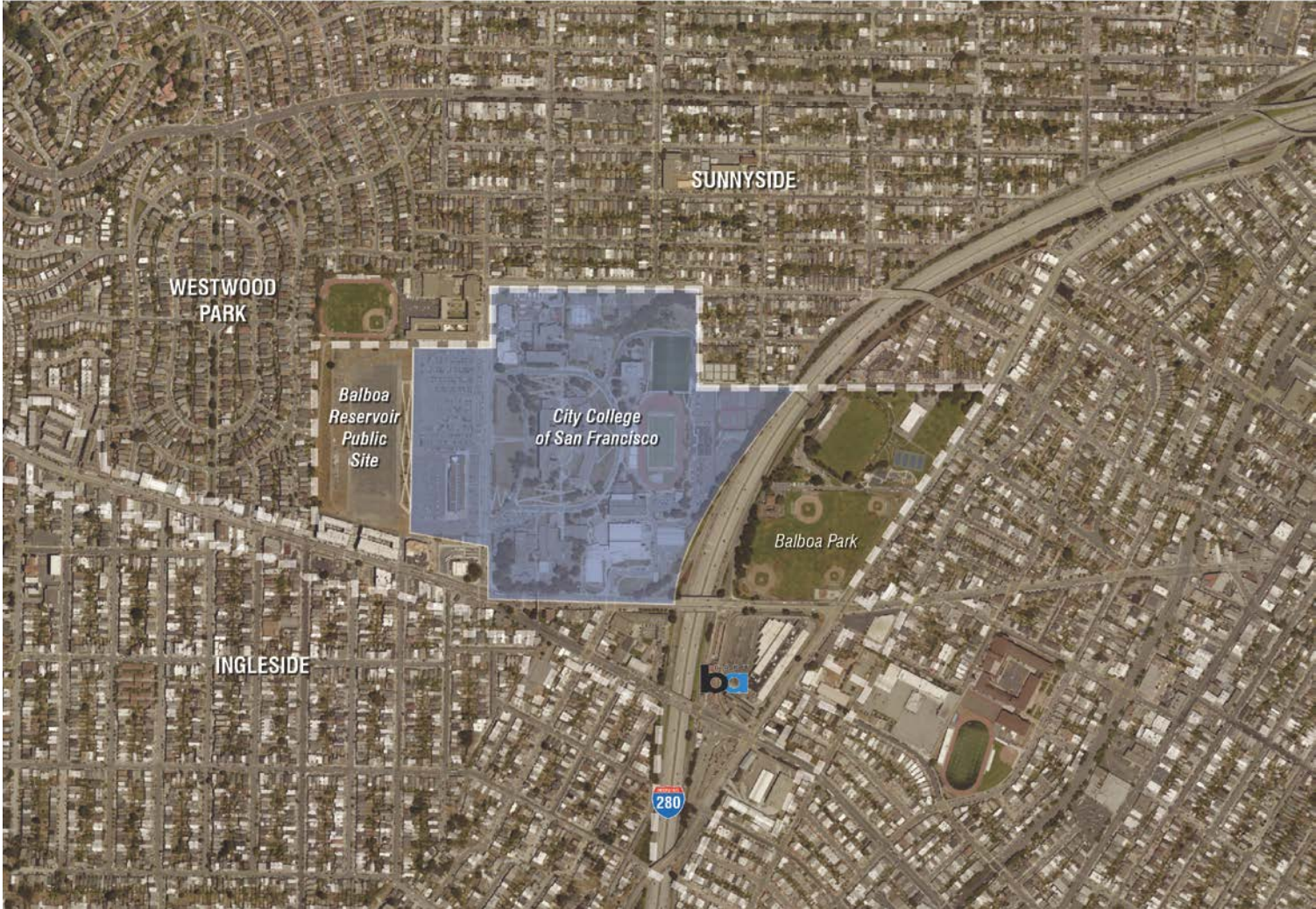


ONGOING PARTICIPATION: CITY COLLEGE MASTER PLAN

District-wide
Facilities Plan

18 months

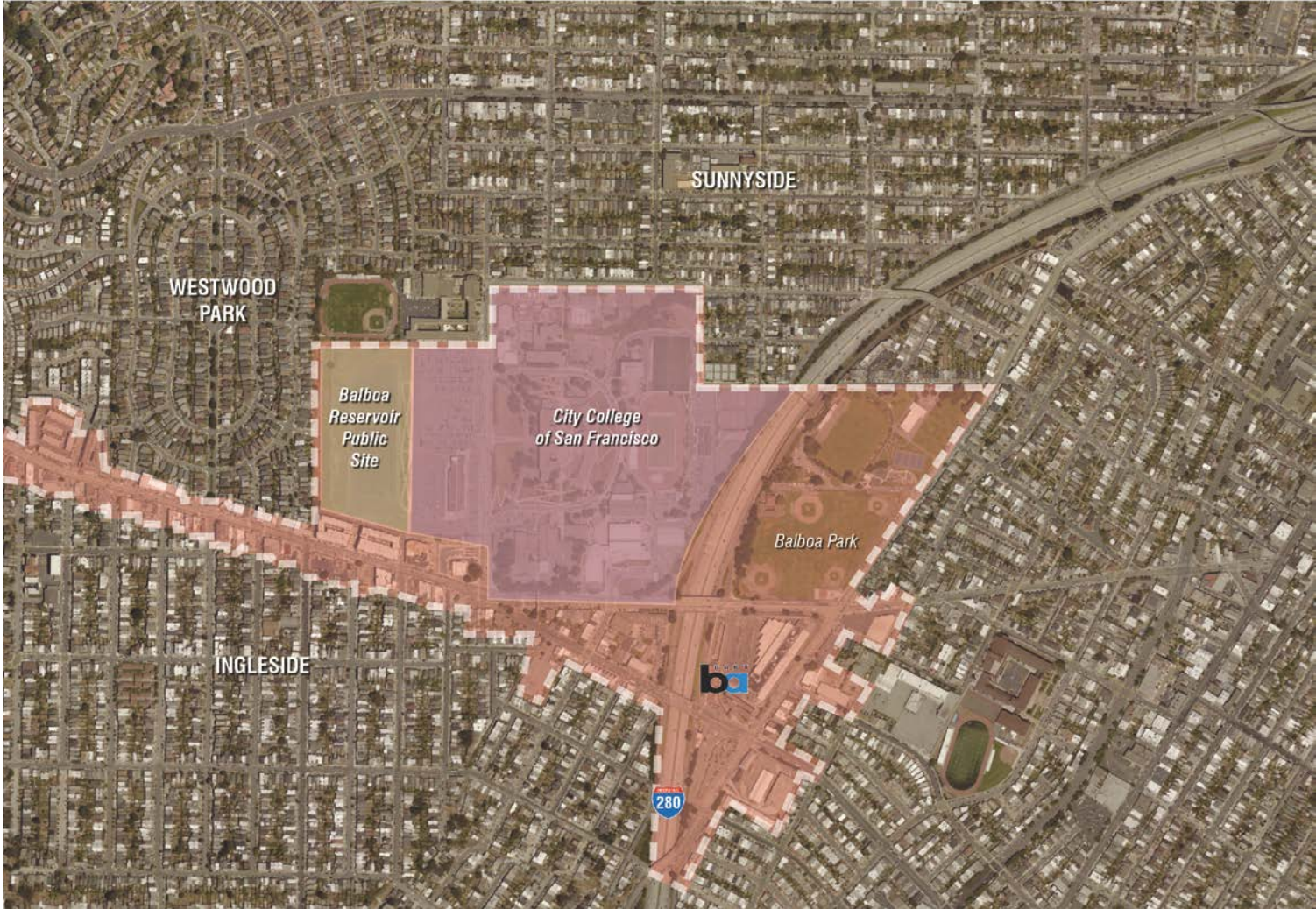
Currently
coordinating
between City and
City College



ONGOING PARTICIPATION: BALBOA PARK STATION CAC

Balboa Park Station and transportation improvements

Balboa Park Area Plan Implementation

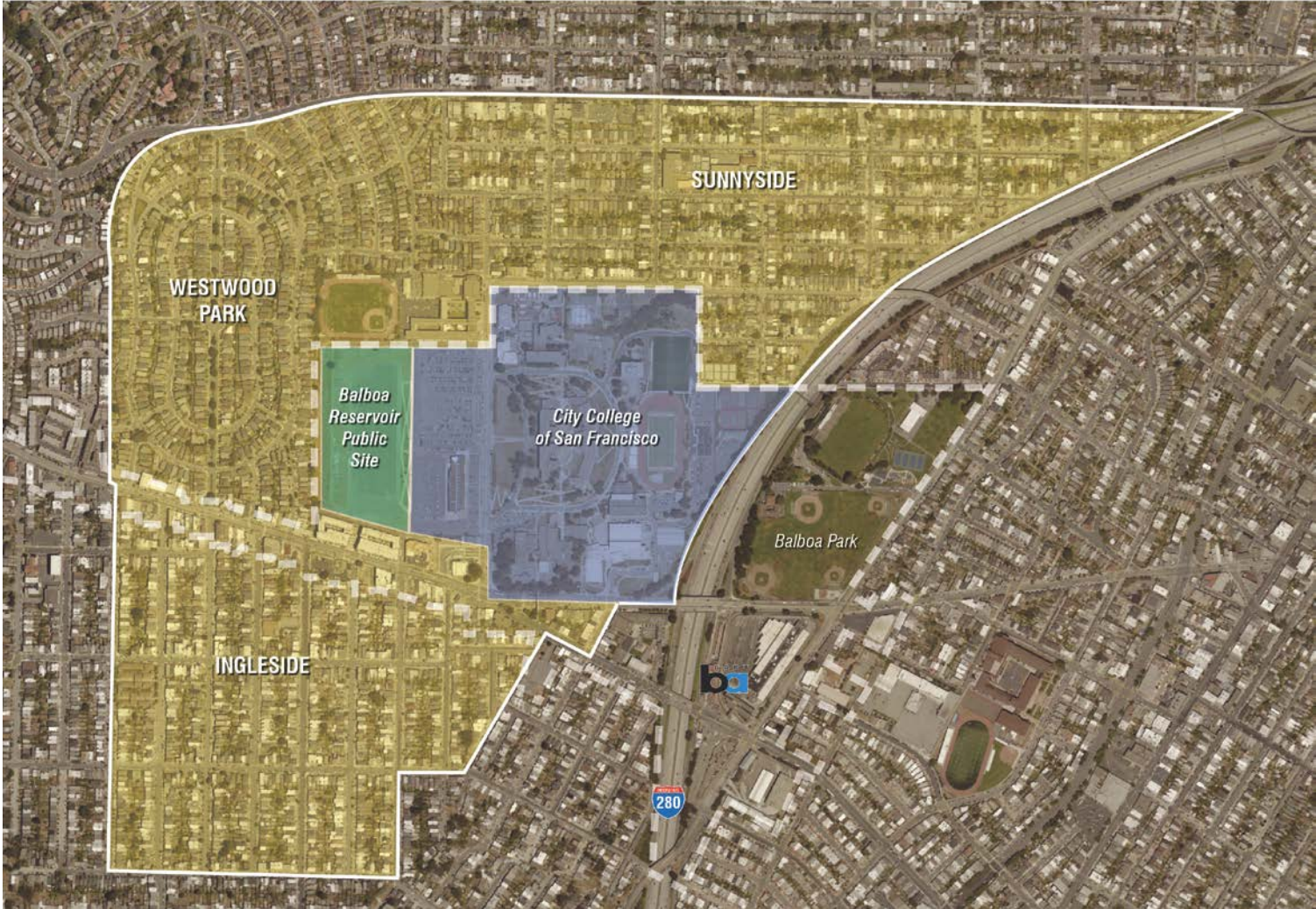


ONGOING PARTICIPATION: BALBOA AREA TDM PLAN

Neighborhood-specific demand management strategies

Includes City College, Reservoir and surrounding neighborhoods

Short & long term recommendations



Thank You!

BALBOA RESERVOIR

sf-planning.org/brcac

brcac@sfgov.org

BALBOA PARK STATION CAC

sfmta.com/about-sfmta/organization/committees/balboa-park-station-community-advisory-committee

Keith.Tanner@sfmta.com

BALBOA AREA TDM

sf-planning.org/balboaTDM

pcosta@nelsonnygaard.com

SFMTA DEVELOPMENT AND LAND USE INTEGRATION

sfmta.com/projects-planning/projects/transportation-demand-management

Carli.Paine@sfmta.com