

**BALBOA RESERVOIR COMMUNITY ADVISORY COMMITTEE
CITY & COUNTY OF SAN FRANCISCO**

AMENDED MEETING MINUTES

**City College of San Francisco
Multi-Use Building, Room 140
55 Phelan Avenue, San Francisco, CA 94112
Monday, January 11, 2015
6:15 PM
Regular Meeting**

Please note that a supplemental audio recording of this meeting is included on the Planning website via the following link: www.sf-planning.org/brcac

Documents received during this meeting are included as attachments.

Committee Members Present:

Howard Chung, Brigitte Davila, Kate Favetti, Christine Godinez, Rebecca Lee, Robert Muehlbauer, Lisa Spinali, Jon Winston, Maria Picar

Committee Members Absent:

Robert Muehlbauer

Staff Present:

Jeremy Shaw, Sue Exline, Planning Department; Emily Lesk, Mike Martin, Phillip Wong, Office of Economic and Workforce Development

1. Call to Order and Roll Call.

- a. Roll Call

2. Opening of Meeting. (Action Item)

- a. Change of 1/11 agenda so 'RFP Process' is addressed first; moving item 5 up.
- b. Amendments to 11/5 minutes.
 - i. Francine Lofrano. Westwood Park.
 - 1. Page 2 of 17. *Provided written comment and posted as an attachment to 11/5 minutes.*

- ii. Aaron Goodman.
 - 1. *Emailed written comment and posted as an attachment to 11/5 minutes*
- iii. Motion to approve with amendments: Winston, Second: Chung
 - 1. Ayes: Chung, Davila, Favetti, Godinez, Lee, Spinali, Winston, Picar
 - 2. Noes: [none]
- c. Amendments to 11/30 minutes
 - i. Harry Bernstein. District 11.
 - 1. Page 9. General Comments – *Provided written comment and posted as an attachment to 11/30 minutes.*
 - ii. Jennifer. Sunnyside
 - 1. Page 7. Geri Vahey correct spelling of her name.
 - iii. Yonathan – *Emailed written comment and posted as an attachment to 11/30 minutes.*
 - iv. Motion to approve with amendments: Winston, Second: Favetti.
 - 1. Ayes: Chung, Davila, Favetti, Godinez, Lee, Spinali, Winston, Picar
 - 2. Noes: [none]
- d. Amendments to December 14
 - i. Harry Bernstein.
 - 1. Page 4, Line 4, Letter H. Charlie said, “Outer Mission” not “Mission”
 - 2. Page 4, Line 6, Letter H. Add “affordable housing” before “community planning decision making”
 - 3. Page 5, Letter I. Dan, 5th line from bottom, they don’t have same concerns we do... add, “for decades”
 - 4. Page 5, Line 3. Harry, “Waves Training Facility”
 - 5. Page 5, Line 8. I understand the PUC “developed”
 - 6. Page 5. Line 5. They were given to the college since it was “exploding” since it was established in 1940”
 - 7. *Provided written comment and posted as an attachment to 12/14 minutes.*
 - ii. Motion to approve as amended: Chung, Second: Winston
 - 1. Ayes: Chung, Davila, Favetti, Godinez, Lee, Spinali, Winston, Picar
 - 2. Noes: [none]

3. Next Steps in RFP Process.

- a. CAC
 - i. Lee.
 - 1. What typically happens during a design workshop? What do people ruminate over?
 - 1. Sue Exline. Planning Department. When developer comes on board, it can be anything from a charrette, or sitting down with pen and paper creating design and receiving feedback. Usually hands-on. I would imagine a series of meetings.
- ii. Favetti.

1. Are we going to see the RFQ/ RFP before it goes out, and be able to provide input?
 1. Mike Martin. The actual body of the RFP that includes City requirements, we're not planning to put into the public because competitively we don't want respondents to have an early read on what that looks like. We're using the development parameters that highlight what's important on the community amenities side, we'll put that verbatim to what you see here in the document, but the rest of the guts will not be a part of this process.
 2. Spinali. More than just "community amenities"
 3. Mike Martin. Parameters will be verbatim. The components of a successful proposer are going to be interpreted through the development parameters we're talking about here, and those that you will see here comprehensively.
- a. Public Comment
 - i. Christine Hanson. Excelsior.
 1. Get presentation on CEQA.
 2. The process (CEQA) is complicated and it's overwhelming.
 3. It looks by the slides that it's given a little blip.
 4. It would be very helpful for this presentation to be given by an independent environmental group, not Planning; better if they weren't involved with the project.
 5. Good for the committee to have a full and unbiased knowledge of CEQA.
 6. Even if you hire a lawyer they are frustrated by CEQA Laws.
 7. Get as much information now about CEQA.
 - ii. Kishan Balgobin. Westwood Park.
 1. Development Parameters. We've gone through 6 months working with the City and the CAC look at parameters. Countless hours and nights coming up with feedback.
 2. I want to know how many more meetings or iterations on the parameters before we have the down. At what point to we say we're done with the parameters?
 - iii. Max Iwald. Ingleside.
 1. The public workshops sounds like a great idea. Are we the public going to be a part of that? I'm concerned that if what we the public ask for, is that going to be listened to?
 2. On the Ocean Avenue Development we provided feedback on the drawings and benefits but it wasn't considered. I'm worried that will happen here.
 3. I'm seeing all of these big, boxy buildings going up on Ocean and it they don't go with this neighborhood. They look cheap and crappy. I live on the hill and we have to look down on this.

4. Can I get an assurance that this won't happen?
5. In the workshops, if we have one or two people that say no will that change it?
 1. Spinali. CAC represents the community and we're here to make sure the community perspective is included and is acted upon.
6. I want it to be aesthetic and nice looking.
- iv. Jenny Perez. Plymouth.
 1. Notes from Anita Theoharis and Ann Chen.
 2. I've seen very little from Westwood Board representatives regarding Residential Character District Designation, codified in Planning Code Section 2.4.4.1.
 3. City Representatives are mandated to protect neighborhood based on RCD requirements, and any development near Westwood Park needs to adhere to RCD requirements.
 4. Current proposal does not follow RCD requirements. Any RFP should include them.
- v. Laura Frye. Westwood Park.
 1. I think we need more meetings.
 2. The RFP is "building the envelope."
 3. The design is predicated on the RFP.
 4. The RFP has not been responsive to the neighborhood.
 5. Show me an RFP that did not go to the maximum height or the minimum open space. No response from Planning.
 6. Developer is going to the height we allow.
 7. I hope that you don't pass it through with these heights and this density.
- vi. Maureen. Plymouth.
 1. I appreciate this is open to the public.
 2. I don't believe the CAC is representative of the neighbors.
 3. Rebecca Lee is a member of SF BARF.
 1. Lee. I am not a member of SF BARF.
 4. Things we've asked for have been crossed out.
 5. If I wake up one day with a road through my backyard, would not consider that neighborly.
- vii. Francine Lofrano. Westwood Park.
 1. *Submitted document, attached.*
 2. Westwood Park's Residential Character District should be included in the RFP especially as it pertains to the Western portion of the site.
 3. Spent last five years to develop RCD.
 4. Anita Theoharis was crucial to developing the RCD and Westwood Park Design guidelines. Secured the approval of the Planning Commission and Full Board.
 5. Should be used as a model for developing this kind of legislation.
- viii. Monica Collins. Sunnyside. City College.

1. I wonder if these are union jobs.
 2. If not, these might create problems down the road.
 3. I wonder if young people from the community will be given opportunity apprentice.
- ix. Fernando Marti. CCHO.
1. Mike Martin's approach is a common way to approach development, but not the only way to approach an RFP.
 2. Schlage Lock developed urban design guidelines long before a development agreement was reached.
 3. MOHCD held a number of design charrettes for a North Beach/Chinatown affordable housing site, and gives the opportunity for the community to shape the RFP.
- x. Max. Ingleside.
1. Height of the building.
 1. Spinali. We'll address this at a later part of the agenda.
 2. Can we get to more meetings?
 1. Spinali. The process is to get to a place where we are comfortable with the parameters/principles. We'll continue to meet until that happens, and if that means additional meetings we'll take additional meetings.
 2. This will not be a process to stop something from happening because we cannot come to an agreement. The idea is to come up with parameters everyone can agree with, otherwise nothing will be built.
 3. More meetings would be targeted and specific.
 4. We want the maximum amount of community participation.
 5. Not everyone will be happy, but we want something people can live with.
- xi. Alvin Ja. Sunnyside.
1. Revised parameters do not deal with the substantive pieces.
 2. Parameters avoid/side-step the issues the community has with impacts.
 3. I sent an email quoting the San Luis Obispo City Attorney sequence of actions by City Agencies.
 4. You came up with the conclusion and you worked backwards.
 5. I think you're side-stepping the sequence that is supposed be followed with CEQA.
- xii. Theodore Randolph. Excelsior.
1. How do you weight the relative importance of different elements of the RFP?
 2. You might be able to do one item, but not another. How do you figure that out?
- xiii. Harry Bernstein. District 11.

1. What AJ just said, given the present circumstances, the present environment, how that will go forward?
2. Lower reservoir is for overflow parking.
3. The Lower reservoir's description is an area for dog-walking.
4. Parking should be mentioned.
5. This is part of the CEQA process.
6. *(Additions per comments at 02/08/16 meeting attached to this document)*

4. Additional Public Benefits Parameters.

a. CAC

i. Lee.

1. In the First slide there are the amenities desired. How did you narrow into these 7 bullet points?
 1. Emily Lesk. Not a narrowing, this is exhaustive list from what we heard. We believe everything on this list is covered in the full set of the parameters. Highlighted that additional public benefits are a catch-all from this exhaustive list that weren't covered in the fall.
 2. Spinali. Mapped what was covered by other parameters and then additional items are not covered by other parameters.
 3. Emily Lesk. Let us know if anything was missed.

ii. Favetti.

1. Looks like a wish list.
2. We have a need for youth and childcare center and recreation facilities.
3. Glad to see housing for multi-generations.
4. We have been talking about millennials. We need to also be concerned about the generation following the millennials - called by some as Young Urban Creatives, "Yuccies." The point being that we need to plan for the present and the future generations as well.
(Additions per comments at 02/08/16 meeting)

iii. Spinali.

1. Principle 2. Maximizing an active first floor.
2. We already see this on Ocean Avenue and there are vacancies where there shouldn't be.
3. We want to ensure there's vibrancy and mitigate vacancy.
4. Active things happening on the ground floor will be important for this site.

b. Public Comment

i. Sheila. Teacher, CCSF.

1. Live in Oakland.
2. Spoke at 12/15 meeting.
3. Parking is heavily used by CCSF students and faculty.

4. My students need a place to park.
 5. Developer needs to create permanent parking for CCSF, that isn't shared that matches number of open spots that are there.
 6. This area is land-locked, there is no way to access this plot of land.
 7. It will be hard to get to these things because there is no access.
- ii. Ray. Sunnyside.
1. Principle 1. Encourage to not overlook the afterschool programs, not just 1 to 5 years old/preschool;
 2. Section b. Design and construction should consider and specifically childcare noise that can be created and impacts on adjacent neighbors in Westwood Park.
 3. Principle 2. Include parking as important use.
 4. Section d. Burden of proof should be the developer and site manager to show that comparable alternatives are not nearby. Avoid vacancies.
 5. Principle 3. We need parking for the PAEC, which will benefit the broader community.
 6. Need a large public meeting space that can hold at minimum 100 people and charges a nominal fee for use.
 7. Improved pedestrian transit options to increase access to site.
 8. *Submitting comments in writing, attached.*
- iii. Fernando Martí. CCHO.
1. Potential drawbacks with development parameters.
 2. Lack of data and lack of research that went into recommendations.
 3. Re: Childcare facilities, City has a nexus study that links development with the need for childcare
 4. How much Childcare, 2008 nexus study recommended 12 to 20 sq. ft. of indoor space and 8 to 13 sq. ft. of outdoor space for each unit.
 5. There are few providers that serve all of the different needs based on age.
 6. This is information you might want to do your research on to bring more specificity to the parameters.
 7. I'm a big fan of activated ground floor spaces. But what kind of ground floor spaces make sense in a land-locked area? Possibly childcare centers and community meeting rooms.
 8. Is anyone that is really going to go to a retail space?
- iv. Ken. Westwood Park.
1. I've been to all the meetings for the Balboa Park Plan since 2001.
 2. I recognize the parameters.
 3. Less than 20% of the parameters have to deal with housing.
 4. Most of the public amenities list deals with open space, walking, easier to get to weekday needs, and recognition of cultural needs.
- v. Alvin Ja. Sunnyside.
1. Regarding this parameter, when you talk about additional benefits you are talking about tradeoffs.

2. Parameter does not address drawbacks.
3. With providing benefits what does the project take away? Parking.
- vi. Chris Hanson. Excelsior.
 1. How was this amenities list generated?
 1. Jeremy Shaw. From public workshops and online survey.
 2. Do you have more information that shows where this came from?
 1. Jeremy Shaw. Yes, it's online on the general page for Balboa Reservoir. Memos are there with specific surveys, or they can be posted. (www.sf-planning.org/balboareservoir)
- vii. Name not given.
 1. Items in green on amenities list.
 2. PAEC seems like a good way to get the art/non-profit/small business/tech spaces.
 3. Work with CCSF to build a PAEC that can handle these amenities and also parking for a school that serves 50,000 students annually.

5. Revisions to Parameters to Date.

- a. Public Comment.
 - i. Linda Judge. Westwood Park. Chair, WPA BR Committee.
 1. Our community wants the neighborhood to be successful.
 2. We understand important need for affordable housing for multiple income levels.
 3. The 2009 BPASP addresses these concerns.
 4. Only minor revisions were made to the parameters based on WPA's comments, larger changes were not incorporated.
 5. These larger changes are, housing weighted toward the middle-class, contiguous open space and total amount of open space, recognition and respect of Westwood Park's RCD status, and the concerns of the Westwood Park neighbors.
 6. *Submitting comment matrix, attached.*
 - ii. Laura Fry. Westwood Park.
 1. 2 minutes is not enough.
 1. Spinali. Comments may also be submitted online.
 2. They never use the words density or number of units.
 3. Plans have always been 425 to 500 units
 4. It's in City policy to honor the neighborhoods.
 5. If you're looking at 65' to 85' you're looking at 600-1200 or more units.
 6. You're looking at multiple Avalon's in that space.
 7. It's disingenuous to not talk about the number of units.
 8. What are the parameters for the number of units?
 9. They say minimum open space is 1.5, but they can be divided by streets. So Miramar Boulevard could be considered open space.
 10. The privately-owned public space, they can choose not to make public and may not even be part of our open space.

11. Submitted Policy documents, attached.
 12. Be responsive to the community and not do something high density.
 13. The City is managing the BRCAC.
- iii. Francine Lofrano. Westwood Park.
1. Page 2 of 5 of the Public Realm Parameters. Item F. Respect scale and privacy of all adjacent uses. Westwood park neighbors to the west has been crossed out. We said 25'-40' with a maximum of 65' of height has been struck out.
 2. 2 minutes doesn't provide enough time to make comments.
 3. We've not been listened to and it's a sham.
 4. One parking space per family unit; I have multiple neighbors that have kids and the wife and husband have a car, which is two parking spaces.
 5. This is not realistic.
 6. Disappointed with how much has been red-lined and changed; does not comport with our beliefs.
 7. Powers and duties section 5.7.15 of the Balboa Reservoir CAC. Item B the advisory committee should provide feedback for what development objectives should be included in the RFP to be issued for the City for development includes but is not limited to, Item 5 good neighbor polices to serve existing residents and small businesses around the site.
- iv. Ellen Wall. Sunnyside.
1. Something Jeremy said is disturbing, which is preserving Sidewalks which has not been done at the corner of Miramar and Ocean Avenue where the housing development is, which overlaps the sidewalk by 4 feet.
 1. Hedda Thieme. Keystone and Ocean Avenue
 2. Members of the Public. Miramar and Ocean Avenue.
 2. That is a dangerous intersection and now this intersection is going to be even worse.
 3. I'm worried about being bumped.
 4. I don't trust anymore in people doing this anymore; Jeremy go take a walk down there, it's not pretty and it's not safe.
- v. Jennifer. Sunnyside.
1. Urban Design and Neighborhood Character 3.a. change, "Utilize wind-appropriate trees to reduce wind impacts"
 2. Urban Design and Neighborhood Character 1.b. Two contiguous acres for park space
 3. Transportation. 1.a. Balboa Park area is an important exit and entrance for cars; area well-suited for adoption of electric cars.
 4. Sustainability. 5.d. Air quality; we expect a reduction in air quality associated with increased congestion on freeways and neighborhood streets. The use of vehicles to accommodate new residents will increase whether the vehicles are owned, shared, or visiting. To

- reduce the effects of added car pollution to our children and neighborhoods, all car parking spaces indoors should include electric outlets to accommodate and encourage more electric vehicle use.
5. Housing. Due to neighborhood character and location not on a commercial thoroughfare, we want height limits and no trade-off for more public benefits.
 6. We want affordable housing but not taller buildings based on how much affordable housing there is, concerned that Sunnyside homes will be effected on northeast side.
- vi. Maxine Walt. Ingleside.
1. Transportation. 1.c. "Circulation strategies sentence regarding studying impacts to Phelan, Ocean and Plymouth" was crossed out. It should be added back in.
 2. Concerned about the height. 60' is six stories? Is that higher than MUB? That is way too high and it does not fit in. It will turn into a high rise here.
 3. I am concerned about the lighting; we don't need a soccer field, CCSF Minnie and Lovie Ward have similar facilities but have too many lights, which are on until 10 PM, and it's like a spaceship; would not want to see that here.
- vii. Monserrat. Ingleside.
1. 85' high, doesn't matter what the incentives are, it's unbearable for this neighborhood.
 2. I'm curious what you mean by buffers. That could be many number of things, trees, and walls?
 3. I have a lot of concern about open space and parks that I see around and were shown in the images. They seem to be chopped up with a lot of concrete. We need to get into that a little more. We don't want to see an open space park that has a lot of concrete. Potentially ADA issues. Park can be done creatively.
- viii. Alvin Ja.
1. Housing. Ownership, suggest lease as opposed to sale to private developer. Example of old Hall of Justice in Chinatown sold to the Hilton Hotel. I don't want to see a private developer take advantage of public assets
 2. Urban design, existing setting. The Balboa Park Station Area plan already change the height limits. It got increased to 45x, and what you're proposing is another increase to 65' up to 85'.
 3. Transportation. The TDM is being put out as a solution to our problems in terms of parking and transportation, but the problem with the TDM, funded by the SFCTA, is the scope of the TDM, what the scope is, very simply is reducing single occupancy vehicle use, it's doesn't talk about parking.
- ix. Maria Elena Ramos. PODER, Pueblote.

1. Our purpose is for all minorities to have affordable housing.
 2. My husband is a citizen and he's been living in San Francisco for 28 years.
 3. My son is 11 years and a daughter who is disabled.
 4. It's really sad to see family and friends who love San Francisco having to move out.
 5. On two different occasions we had to move out of San Francisco because of prices.
 6. We are right on that line, we are not poor but not rich; we never qualify for assistance or housing.
 7. It's difficult to live with someone who's disabled, and also for young children who don't have enough space to study.
 8. It's almost sad to hear that these projects are based on fair market value. When the reality should be based on the residents that live in San Francisco.
 9. That is why we're demanding that the project be 100% based on that. And 33% for the low-income housing. We're looking at a family income of \$56,000 for a family of four, and looking for 33% of living for people with low income \$81,000 for a family of four. The final 33% for people of moderate income, which is \$122,000. That's our reality.
 10. What you people are talking about is not reality.
 11. Let's put our feet on the floor and stop thinking about this market that doesn't even exist.
- x. Charlie Sciammas. Excelsior. CUHJ. PODER.
1. City officials are telling us 33% of affordable housing, roughly half for very low income and half for moderate income, is the best we can hope for.
 2. How can we with publically-owned land, in the midst of a housing crisis that is displacing very low and moderate income San Franciscans, not be doing our very best to house those who can't afford market-rate housing; various jobs.
 3. We reached out to CCHO, they are doing their best to create solutions for more affordability.
 4. They shared their best thinking given the existing constraints of the site, and learned that Housing parameter 1 requiring only 33% affordable housing, which means 67% market rate, is the most conservative estimate of a wide-ranging number of scenarios, which could including 67 to 100 percent affordable housing.
 5. If affordable housing developers are saying it's possible, why aren't we doing our best to achieve it?
 6. The RFP should set the standard high, not low, given that likely bidders are market-rate developers more interest in profits not the community.

7. Support of CCSF community, and the project must be accountable to the community and the faculty and students.
- xi. Lily. Program Manager, CUHJ.
 1. Affordable Housing
 2. We surveyed 310 people from the area, high wish and want for affordable housing.
 3. You're comparing to prop k, but it is not subject to prop k.
 4. Why are we using Prop k as the ceiling? It should be the floor. 33% is not enough.
 5. 74% of people surveyed interested in affordable housing for those making \$29,000 or less annually.
 6. If you're looking at SF as a whole we don't have people in that middle range of income (120% AMI).
 7. San Francisco is a U shape with more people that are low-income and high-income, but fewer people who are moderate income.
- xii. Peter Cohen. Co-director, CCHO.
 1. *Submitted document, attached.*
 2. Housing Parameters.
 3. Principle 1. Using these income targets of AMI, which is averaging San Mateo, Marin and San Francisco; high income counties. Should be adjusting for San Francisco incomes, which is typically 10% less than the other two. Should say San Francisco incomes.
 4. Principle 2. Family-friendly units is good but abstract. Define the minimum size that is family-friendly. We have specific minimum unit sizes for affordable housing, which should be the standard. Two bedrooms might not be adequate for a family of four; at some point kids may not want to share a room.
 5. Principle 3. The undersupply of housing pertains to units that are affordable to low, moderate, and middle-income folks.
- xiii. Fernando Martí. CCHO.
 1. *Submitted document, attached (same as document from Peter Cohen) and referenced in the following.*
 2. Page 4. We look at what different income levels are as we are defining them that represent the working families of the southeast.
 3. I searched Avalon communities Ocean Avenue, market rate units advertised: 1 bedroom or studio 500 sq. ft. 3000/month. Converted to 1/3 of salary, one needs to earn 120,000 to make that affordable. Market-rate is providing for 170% AMI.
 4. Is that what we need to be providing units for on public land?
 5. Address this question in the RFP.
 6. Do we want to make 66% of units to be affordable to 170% AMI.
 7. Last page. Series of potential scenarios that are important to review before you an RFP before a developer. Developers would go for the

minimum required. If minimum is 33% and Housing parameter 1.c says maximize affordability, developer will go for that 15% minimum.

8. We were involved with negotiations around Prop D with the Giants. Giants talked to us only because they didn't yet sign an Exclusive Negotiation Agreement. You need to make a decision before an ENA goes into place.

xiv. Maureen. Westwood Park.

1. Middle-class was the unit that wasn't hit with the target zone; the lower was being provided for numerous ways. The upper doesn't need any help.
2. Concerned about the density.
3. Neighbors appreciate current density; don't want to live in the central business district.

xiv. Yonathan Randolph. Ingleside.

1. Working-class and middle-class are endangered in San Francisco.
2. Eventually San Francisco will be a gated community for the rich.
3. Cause, we haven't been building enough housing.
4. David Campos' legislative report said we should be building more housing.
5. The White House says San Francisco in particular should be building more housing.
6. These experts are saying that the quantity of housing is more important than the percentage of affordability.
7. If we want to preserve the middle-class we need to allocate more land for housing.
8. Urban Design, Principle 2. Clarify that housing is a community benefit. If the developer can offer more housing, we can offer more height.
9. 85' is not that much. Look at the Berkeley dorms, near single-family homes. It's provides affordability to the students, and we need affordability here in San Francisco.

xv. Madeleine Mueller. Teacher, CCSF.

1. How many empty units do we have in San Francisco?
2. I've seen documentaries on land speculation, driving up land prices and need. A lot of profiteering.
3. Money coming in from out of the country.
4. How many units do we have?
5. 30 years ago we took care of 200 units. There were no housing units built. *(Additions per comments at 02/08/16 meeting)*
6. We were promised it would never be this again.
7. It's coming back, which is why we're distrustful of this process.
8. We have to have this data before we trust the process.
9. There was strong language around sharing parking, everyone said this wasn't going to work for residents or for the students. Precludes night

school or community college. *(Additions per comments at 02/08/16 meeting)*

10. Transportation studies will try to get a 60% goal of not using cars. 30 years ago, 40% of students were in their cars, we more than met that already.

xvi. Chris Hanson. Excelsior.

1. Add “selectively based on this feedback” on the cover of the memos. *(Additions per comments at 02/08/16 meeting)*
2. There are a lot of things that just don’t fit into parameters because they are diametrically opposed to the parameters.
3. Public Realm. Daily experience for diverse neighbors, but it’s already used for parking continue that use. Add that it’s currently and continuing to be used for parking. *(Additions per comments at 02/08/16 meeting)*
4. There is nothing that says this land is zoned open space.
5. There’s nothing as far as with the SFPUC about them getting fair-market value. Why should a private developer take advantage of public assets?
6. CCSF. Incorporate different needs, no mention of parking as a need.
7. Urban Design and Neighborhood Character. Provide parking for PAEC.
8. Public land should stay in public hands. *(Additions per comments at 02/08/16 meeting)*

xvii. Kishan Balgobin. Westwood Park.

1. It’s interesting see the different perspectives.
2. At the end, some of us will win and some of us will not.
3. I am a little saddened by the process.
4. We have spent a lot of time looking at the parameters and learning about the process.
5. It seems that a lot of the recommendations from Westwood Park have not been included.
6. Provide feedback on why suggestions were not included.
7. Housing. 85’ is a lot for this neighborhood. Neighborhood cannot support 8 or 9 stories. Add language that says “no more than 25’ or 30’ on the west side and no more than X feet on the east side.” I don’t know what the benefits are going to be provided, but I don’t think anything will be worth adding 85’.

b. Kate Favetti.

1. Number of principles that need to be addressed.
2. Reiterate the position of WPA, take City’s legal responsibility to take Westwood Park residential character into account.
3. Ensure that reasonable and appropriate space and distance between neighbor’s backyards and the new development’s borders are ensured.
4. Large open spaces and walking trails; at least 2 acres for the park.

5. Private owner backyards are programmed and preserved between Plymouth and homeowner's backyards on the western edge.
6. Multi-story buildings be built on the eastern edge; no towering development looking over backyards.
7. 10-year process for the BPS Area Plan, which resulted in 40' height restriction.
8. Earth berm on Westside of reservoir is preserved and beautified
9. Carefully consider not disturbing older homes with the earth-moving process of construction. Put assurances that disturbances won't happen in the RFP.

6. Close of meeting.

- a. Spinali. We want to put something together that we can all feel good about. Our intention. We will start with Part B. at our next meeting on February 8, 2016.

7. Adjournment.

Harry

November 30, 2015

p. 9

AS IS, MY COMMENTS DON'T MAKE SENSE

i. Reverse priority of principles. Performing Arts Center needs to be constructed. What are you asking for and who are you talking to?

[left out the specifics that two of the principal CCSF people in charge of facilities were Fred Sturner, a Director of Facilities Planning and Construction, who was fired earlier this month, and Mark Zacovic, an interim Vice-Chancellor of Finance and Administration who is expected the leave towards the end of the year.]

This is my full statement:

As Sunnyside resident aj has noted, your transportation Principles and Parameters should reverse the priority of trying to place the burden of traffic and parking inadequacies on the existing residential communities and on the College's students, faculty and staff.

I agree with a previous speaker that the CCSF Performing Arts Education Center, which is continuing to be planned, needs to have been considered in the 2014 draft plan of the SFPUC. The requirements for this facility, twice approved by the voters, needs to be accommodated in the immediate future, including access and its parking needs before a new housing project is added on an adjacent lot that has been termed surplus. This arts facility will be an asset to the College and to the surrounding Ocean Avenue district.

Peter and Jeremy have made references to working with City College in terms of how the College will be using its space and working out relations with the surrounding neighborhoods and with the proposed Balboa Reservoir projects. Who is the contact that anyone is expecting to make decisions or coordinate in lockstep with City College? Fred Sturner, the Director of Facilities Planning and Construction, who was working on the City College facilities master plan, was fired less than a month ago. Mark Zacovic, the

Vice-Chancellor of Finance and Administration, whose responsibilities include planning, is only an interim administrator who may be departing at the end of the year. The means for CCSF faculty, students and staff to get their ideas considered by administration is inadequate--which is why it's unclear who is responsible for the planning you have requested. The administration is seeking a 26% reduction of classes and hence faculty over the next few years.

<http://www.sf-planning.org/index.aspx?page=4224>

=====

December 14, 2015

Page 5 of 31

comment from Harry Bernstein

k. Harry Bernstein. D11 Resident. Instructor.

-- changes I want to make:

Then during the war there was building on it for a WACs barrack.

This should have been WAVES barracks.

i.

I have a comment about the legitimacy of these meetings. I understand that the land at the

(incorrect transcription) reservoir site had ^{originally} ~~recently~~ been owned by the Spring Valley water company. Then during

the war there was building on it for a ^{WAVES Training Facility} ~~WACs barrack~~. And then after the war that left

those buildings were temporary, they were given to the college as the college was really

exploded since it was established in 1940. There was even a thousand seat auditorium.

Until the mid-50s and by prior agreement those properties were torn down. At that time I

understand the PUC develop needs I'm not sure if it was water storage or some kind of

nuclear threat and they needed the land for something. Essential agreement was the PUC

no longer needed the land for any other purposes it claimed. Then the land would revert

would be returned to the college. Let me repeat that. The land the PUC didn't need would

be returned to the college. I've seen college planning documents showing 2015 projected

xviii.

→ 1. So I second the request that another speaker made to make public consultation, agendas, minutes between representative of City agencies and City College administration. I had heard that there may have been 3 monthly meetings but also heard rumors that there had been meetings for far longer than that. Why don't we ^{know this?} notice? Why isn't this known? It seemed some of you seemed to say "well, I understand why there would be consultation. ^{This CDC is supposed to be a} transparent body and this double layer of things going on that we don't know is unhelpful.

→ 1. Another thing. Based on discussion with planning department there's into the upper reservoir, where the City College owns it, you have ^{three} access ways. One of them at least is 60 feet wide. And I've been told that the college is expected to build these at its own cost. I've only seen 1 document, which is not signed off on. There are lots of signature lines that are not filled. I have asked about this. I've been told yes that's definitely going ahead and we'll talk about it in this body sometime later on. Let's get that out there into the public discussion. Because you should show that one, 3 stripes across it. With this road if it's going to be built. If it's optional let's talk about that.

omit this common Cui jobs in the p... 2. Another topic, I feel performing arts center must be built. It's a resource for educational purposes and you already said you don't want to interfere with educational purposes. It's for trainings in jobs, in the arts, in the entertainment industry as well as for the general public and it is also an important resource for the business district here.

3. And last thing principle 3 you have to prioritize the needs of City College. It's not making the college fit into the project. It's the other way around.

build out covers the west campus. This whole area. So, when the PUC declared the land surplus in 2012 the understanding that the land should revert to the college, what happened to that and why isn't that on the table? We're only talking about how to sell this how to give for-profit housing. Let's have the full story.

=====

p. 30, Monday, December 14, 2015

xvii. Harry Bernstein. Resident, District 11. Instructor, CCSF.

1. Another thing. Based on discussion with planning department there's into the upper reservoir, where the City College owns it, you have 3 access ways. One of them at least is 60 feet wide. And I've been told that the college is expected to build these at its own cost. I've only seen 1 document, which is not signed off on. There are lots of signature lines that are not filled. I have asked about this. I've been told yes that's definitely going ahead and we'll talk about it in this body sometime later on. Let's get that out there into the public discussion. Because you should show that one, 3 stripes across it. With this road if it's going to be built. If it's optional let's talk about that.
2. Another topic, I feel performing arts center must be built. It's a resource for educational purposes and you already said you don't want to interfere with educational purposes. It's for trainings in jobs, in the arts, in the entertainment industry as well as for the general public and it is also an important resource for the business district here.
3. And last thing principle 3 you have to prioritize the needs of City College. It's not making the college fit into the project. It's the other way around.



BOARD OF SUPERVISORS

Resolution

BE IT KNOWN, That the Board of Supervisors of the City and County of San Francisco hereby issues, and authorizes the execution by the subscribing Supervisor, of the following commendation:

WHEREAS, The residents of the Westwood Park neighborhood have spent the last five years studying their neighborhood in order to develop a special Residential Character District, and;

WHEREAS, The Westwood Park Association and its president, Anita Theoharis, undertook the task of studying the neighborhood's architecture, topography and lot sizes and collected input from the neighbors of the area in order to develop the Residential Character District, and;

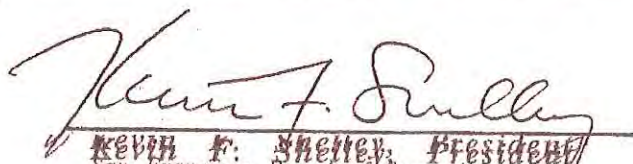
WHEREAS, After years of study, resident input and research, the Association, working with the Planning Department, developed the Westwood Park Residential Design Guidelines to use as the City's first Residential Character District, and;

WHEREAS, Anita Theoharis and members of the Association then advocated and promoted the new guidelines and secured the endorsement of the Planning Commission and the unanimous recommendation of the Housing and Land Use Committee of the Board of Supervisors, and;

WHEREAS, Other neighborhood associations should use the efforts of the Westwood Park Association as a model for developing neighborhood design guidelines and for shepherding the guidelines through the City's legislative process, and;

WHEREAS, City departments should view the efforts of the Westwood Park Association and the Planning Department as a model for developing legislation with the highest level of public participation; now, therefore, be it,

RESOLVED, That the City and County of San Francisco commends Anita Theoharis and the members of the Westwood Park Association for their efforts in developing and advancing the first Residential Character District in San Francisco.


KEVIN F. Shelley, President
San Francisco Board of Supervisors
February 26, 1996

Laura Fry

Planning Department review of projects and development of guidelines should build on adopted local controls, including recently adopted Area Plans, neighborhood specific design guidelines, and historic preservation district documents. Planning staff should be aware of, and be a resource for, on-going individual community efforts that support good planning principles, such as neighborhood-specific Covenants, Conditions, and Restrictions (CC&R's) and design guidelines. New development and alterations or additions to existing structures in these neighborhoods should refer to these controls in concert with the citywide Residential Design Guidelines, although only those guiding documents approved by the Planning Commission may be legally enforced by Planning staff. Also projects in historic preservation districts should refer to related design documents.

POLICY 11.3

Ensure growth is accommodated without substantially and adversely impacting existing residential neighborhood character.

Accommodation of growth should be achieved without damaging existing residential neighborhood character. In community plan areas, this means development projects should adhere to adopted policies, design guidelines and community review procedures. In existing residential neighborhoods, this means development projects should defer to the prevailing height and bulk of the area.

To ensure character is not impacted, the City should continue to use community planning processes to direct growth and change according to a community-based vision. The Planning Department should utilize residential design guidelines, neighborhood specific design guidelines, and other documents describing a specific neighborhoods character as guideposts to determine compatibility of proposed projects with existing neighborhood character.

The Department should support the adoption of neighborhood-specific design standards in order to enhance or conserve neighborhood character, provided those guidelines are consistent with overall good-planning principles and help foster a more predictable, more timely, and less costly pre-development process. To this end, the Department should develop official procedures for submittal of neighborhood-initiated design guidelines, for review by Department staff, and for adoption or endorsement.

POLICY 11.4

Continue to utilize zoning districts which conform to a generalized residential land use and density plan and the General Plan.

Current zoning districts result in land use and density patterns shown on the accompanying Generalized Permitted Housing Densities by Zoning District, Map 6; and the accompanying table illustrating those densities, Table I-64, in Part 1 of the Housing Element. The parameters contained in the Planning Code under each zoning districts can help ensure that new housing does not overcrowd or adversely affect the prevailing character of existing neighborhoods. The City's current zoning districts conform to this map and provide clarity on land use and density throughout the city. When proposed zoning map amendments are considered as part of the Department's community planning efforts, they should conform generally to these this map, although minor variations consistent with the general land use and density policies may be appropriate. They should also conform to the other objectives and policies of the General Plan.

POLICY 11.5

Ensure densities in established residential areas promote compatibility with prevailing neighborhood character.

Residential density controls should reflect prevailing building types in established residential neighborhoods. Particularly in RH-1 and RH-2 areas, prevailing height and bulk patterns should be maintained to protect neighborhood character. Other strategies to maintain and protect neighborhood character should also be explored, including "neighborhood livability initiatives" that could examine guidelines and principles to preserve what is beloved about the area. Such an initiative could result in strategies to improve the appearance and accessibility of neighborhood commercial districts, or neighborhood specific design guidelines for specific RH-1 and RH-2 neighborhoods.

Final EIR 2 Dec. 2008

Tier 1 (0-5 yrs.)	mm.
Wynyard	200
phalan loop	80
Kroger auto	175
Sunset garage	0
gover n offi	0
Ocean Ave. in fill	135
San Jose Ave in fill	200
in Statu area	
	<hr/> 790

Tier 2 (5-20 yrs.)	
Freemile	80
Ocean Ave in fill	330
San Jose Ave in fill	80
in Statu area	
Reserve?	<hr/> 5009
	990

9 City College and west 40%
 - SFPUC controls 60%

1780
 total

2014 HIGHLIGHTS

San Francisco is growing. Plan Bay Area, developed by the Association of Bay Area Governments (ABAG), projects that the Bay Area region will grow by 2 million people by 2040. San Francisco is projected to grow by 90,000 housing units and 190,000 jobs in that same timeframe, roughly equal to San Francisco's existing share of the region's population and jobs. San Francisco has already created plans for the capacity to accommodate the majority of this growth – over 95,000 housing units and 140,000 jobs – through various planning efforts, such as Community Plans, Redevelopment Plans, and Development Agreements on major development sites.

Along with the new housing and jobs comes a need to serve this new population with new and improved infrastructure, including transportation, complete streets, open space, childcare facilities, and other services. In many of these areas, there are also significant deficiencies in terms of adequately serving existing populations with transit service, open space, and other infrastructure needs. Without this new infrastructure service, our existing infrastructure systems would be overcrowded, overtaxed, and would not adequately serve existing and future populations.

This annual report describes the City's capital planning to support projected housing and job growth within the City's recently-adopted Area Plans. This report also includes a detailed description of each Area Plan's infrastructure plan relative to projected development impact fees and other known funding sources.

In 2014, the IFC reviewed the previous year's capital plans, coordinated on grants and other funding sources, and reviewed agencies' work programs as they relate to Area Plans, and updated impact fee revenue projections. Additionally the IFC brought recommendations to and received feedback from the Market and Octavia and Eastern Neighborhoods Citizens Advisory Committees to provide direction on the capital plans for the respective Area Plans. This report includes the IFC's recommendations for development impact fee budgeting for FY2015/16 and FY2016/17, and forecasted impact fee expenditures through FY2019/20.

PLAN AREA OR PROJECT	PROJECTED HOUSING	PROJECTED JOBS
5M	750	4,000
Balboa Park	1,780	725
Candlestick/Hunters Point Shipyard	10,500	10,000
Central SoMa	12,400	50,600
Downtown (C-3 & other non Transit Center)	3,000	5,000
Eastern Neighborhoods	9,000	9,500
Executive Park	1,600	75
HOPESF (Sunnydale & Potrero)	1,800	75
Market and Octavia	5,500	3,000
Mission Bay	3,000	10,000
Mission Rock (SAL 337)	1,000	5,000
Parkmerced	5,700	900
Pier 70	2,000	12,000
Pineon Hill	3,500	75
Transbay Redevelopment & Transit Center	4,500	25,000
Treasure Island	7,000	2,750
Visitation Valley	1,600	500
Western SoMa	2,900	3,200
REST OF CITY	20,000	
TOTAL PLANNED	97,650	143,050
PlanBayArea – TOTAL PROJECTED	92,400	191,000

rehabilitation projects for Eastern Neighborhood Parks. The CAC approved and incorporated the proposed rehabilitation in this year's IPIC expenditure plan for the Eastern Neighborhoods. The proposed rehabilitation projects include smaller scale near-term projects along with initial funding commitments for larger, longer-term projects as a way to leverage additional needed funding.

For the smaller scale projects, the CAC approved lighting improvements to trails within the Potrero Center Recreation Center, addition of a par course exercise trail at Franklin Square, and resurfacing the play area at Jackson Playground.

Medium-term park improvements including committing \$1.2M to the pool rehabilitation. Recreation and Park staff state that the additional funds provided through impact fees will enable the improvements to include a full "Aquatic Center" treatment for the facility instead of a more typical rehabilitation. The "Aquatic Center" treatment would enable greater capacity of the pool, and make it more attractive for a greater range of aquatic uses.

Long-term improvements include pledging initial amounts for complete rehabilitations for Gene Friend/South of Market Recreation Center in South of Market, Jackson Playground in Showplace Square, and Mission Recreation Center in the Mission.

In previous years, the CAC also made commitment to rehabilitating South Park. Of the total \$3M project cost, one half is coming from Eastern Neighborhoods impact fees.

CHILD CARE

In implementing the community facilities component of the Eastern Neighborhoods plan, funds are allocated for child care and library materials. The child care component has been partially realized through the establishment of a new child care center at 2235 Third Street, as part of the Potrero Launch mixed-use development, which opened this past year. The center serves roughly 66 children.

Balboa Park²⁰

The Balboa Park Station Area Plan was adopted in the spring of 2009. The plan calls for a number of major transportation and public realm infrastructure improvements and 1,780 new housing units. The Planning Department projects approximately \$ 476,000 in impact fee revenue in the Plan Area over through Fiscal Year 2020. The current projections are based on actual development projects in the pipeline likely to be entitled in the coming years. Previously, impact fee projections were based on long-range capacity for development.

²⁰ <http://www.sf-planning.org/index.aspx?page=1748>

BALBOA PARK: PROJECTED IMPACT FEE REVENUE

Transportation and Streetscape	49%	\$233,000
Recreation and Open Space	29%	\$137,000
Community Facilities	18%	\$ 87,000
Administration	4%	\$19,000
Total		\$ 476,000

The Balboa Park Station Area differs from other plan areas for several reasons. First, a significant majority of expected new development is proposed on publicly owned land which gives priority to the development of affordable housing. For that reason, and that the plan area contains generally few privately-owned developable sites, the plan is not expected to generate a significant amount of impact fee revenue in the next five years.

As well, the Balboa Park Station Area Plan is subject to continued planning efforts to identify and refine transportation recommendations. Building on the Balboa Park Station Area Plan, the SFMTA completed two planning studies of the Area: the Balboa Park Pedestrian and Bicycle Connection Project (2009) and the Balboa Park Station Capacity Study (2011). The latter recommended specific transportation improvements in and around the Balboa Park Station – many of which have been completed or are underway. The San Francisco County Transportation Authority (SFCTA) recently completed the Balboa Park Circulation Study, which recommended a set of freeway-related access and circulation improvements based on the conceptual vision set forth in the Balboa Park Station Area Plan and refined in subsequent community meetings and technical analyses. Two streetscape planning projects are currently underway along Ocean Avenue. Separate efforts to study the reuse of the Upper Yard of Balboa Park Station and the PUC-owned Balboa Reservoir were also initiated in Fiscal Year 2014–2015.

Due to these on-going planning efforts, the IPIC recommends reserving impact fee funds to remain unallocated until the completion current studies. With the limited amount of funding available in the Plan Area, future funds could help close a funding gap and complete a project or projects. But assessing the best use of funds will not be possible until current development projects and planning efforts are closer to completion.

COMPLETED INFRASTRUCTURE PROJECTS

- » Short-term pedestrian improvements identified by the SFMTA in the **Balboa Park Pedestrian and Bicycle Connection Project** were constructed in the past year. Improvements include a new signal-protected pedestrian crossing of Ocean Avenue near I-280, pedestrian

- Golden Gate Annex (1601 Turk Street)
- The Former Gloria R Davis Middle School Campus (1195 Hudson Street)
- **San Francisco Community College District (SFCCD)/ San Francisco Public Utilities Commission (SFPUC):** Both the SFCCD and the SFPUC's Water Department share ownership of the 25-acre Balboa reservoir site. The reservoir is also within the Planning Department's Better Neighborhoods Balboa Park Station study area. Planning estimates between 575 to 1,000 new housing units could be built on this site. A planning process for this site is underway.
- **Central Freeway Parcels:** Demolition of the Central Freeway freed up some seven acres of public lands for residential development. The freeway parcels have an estimated housing development potential capacity of 900 units. About half of these public lands will be dedicated to affordable housing.

Table F-69
**Summary of
Housing Potential in
City-Owned Lands**

Site	Acreage	No. of Potential Units
MTA Phelan Loop Turnaround	1.4	80
MTA Green LRV Division Upper Yard	1.8	200
MTA Balboa Park Station Infill Housing on San Jose Avenue	7.7	222
MTA Presidio Trolley Division Yard	5.4	392
MTA Woods Motor Coach Division Yard	3.9	1,000
MTA Potrero Trolley Coach Division Yard	4.4	318
SFCCD Balboa Reservoir	10.0	575
PUC Balboa Reservoir	15.0	425
Central Freeway Parcels	7.0	900
TOTAL	66.6	4,112

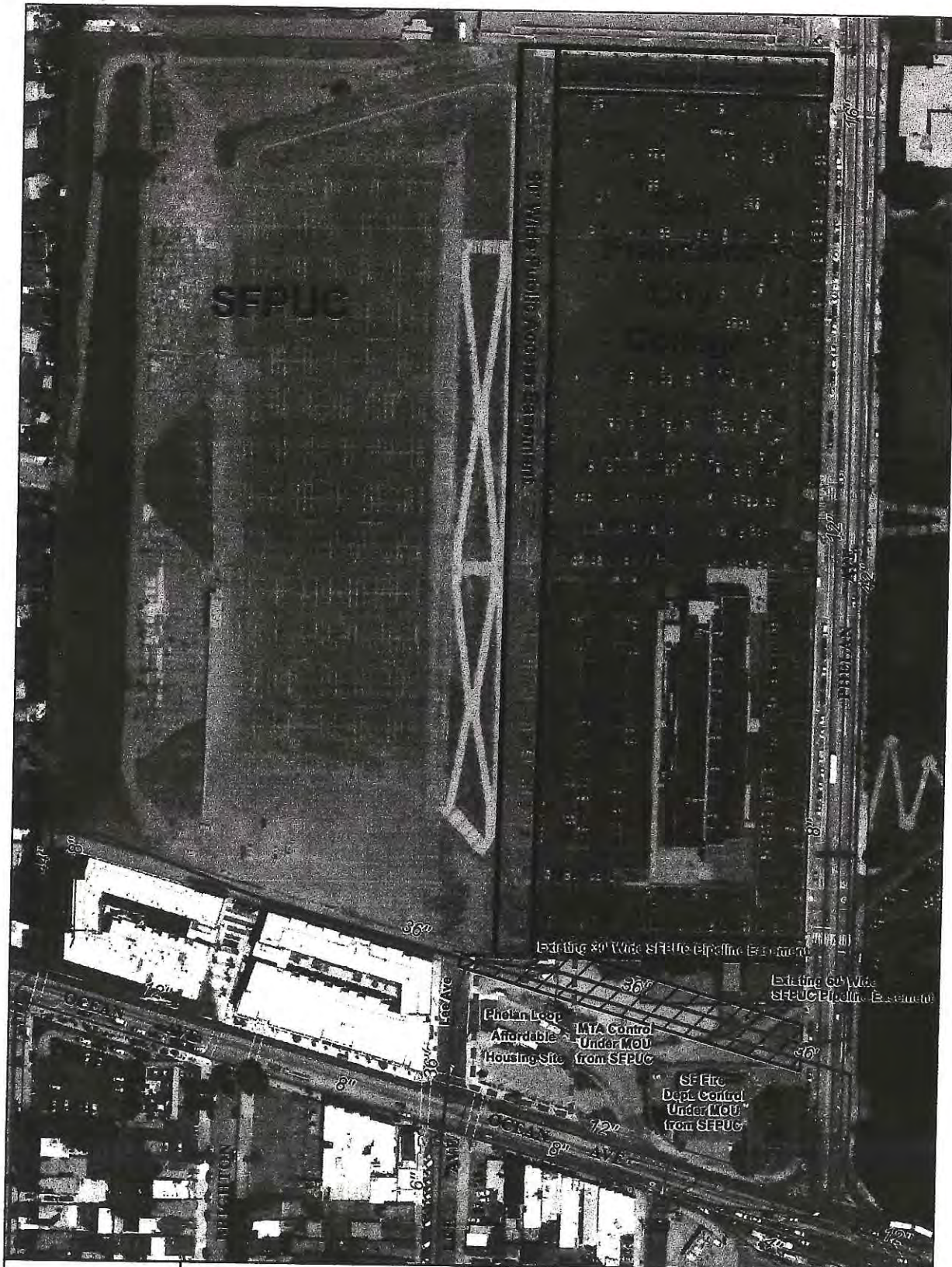


SOURCE: San Francisco Planning Department, EDAM, Turnstone Consulting

BALBOA PARK STATION AREA PLAN EIR

2004.1059E

FIGURE 7: EXISTING AND PROPOSED OPEN SPACES IN PLAN AREA



1:1,500

1 inch = 125 feet

0 40 80 120 160 Feet

Public Access Easement

60' Wide SFPUC Pipeline Easement

30' Wide SFPUC Pipeline Easement

Phelan Loop
Affordable Housing Site

Existing SFPUC Pipelines

SFPUC

San Francisco City College

MTA Control Under MOU from the SFPUC

SF Fire Dept. Control Under MOU from SFPUC

Aerial Photo Flown in 2012



Hetch Hetchy
Regional Water System
Servicing all the San Francisco Bay Area's drinking water

REAL ESTATE SERVICES

Balboa Reservoir

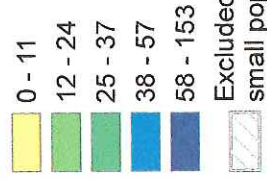
The City does not guarantee that the information is accurate or complete. The City provides this information on an "as is" basis and disclaims all warranties, express or implied, including but not limited to warranties of merchantability, fitness for a particular purpose and non-infringement. The City is not responsible for any damages arising from the use of data. Users should verify the information before making project commitments.

Date: 10/19/2012

Mareen Westwood Park

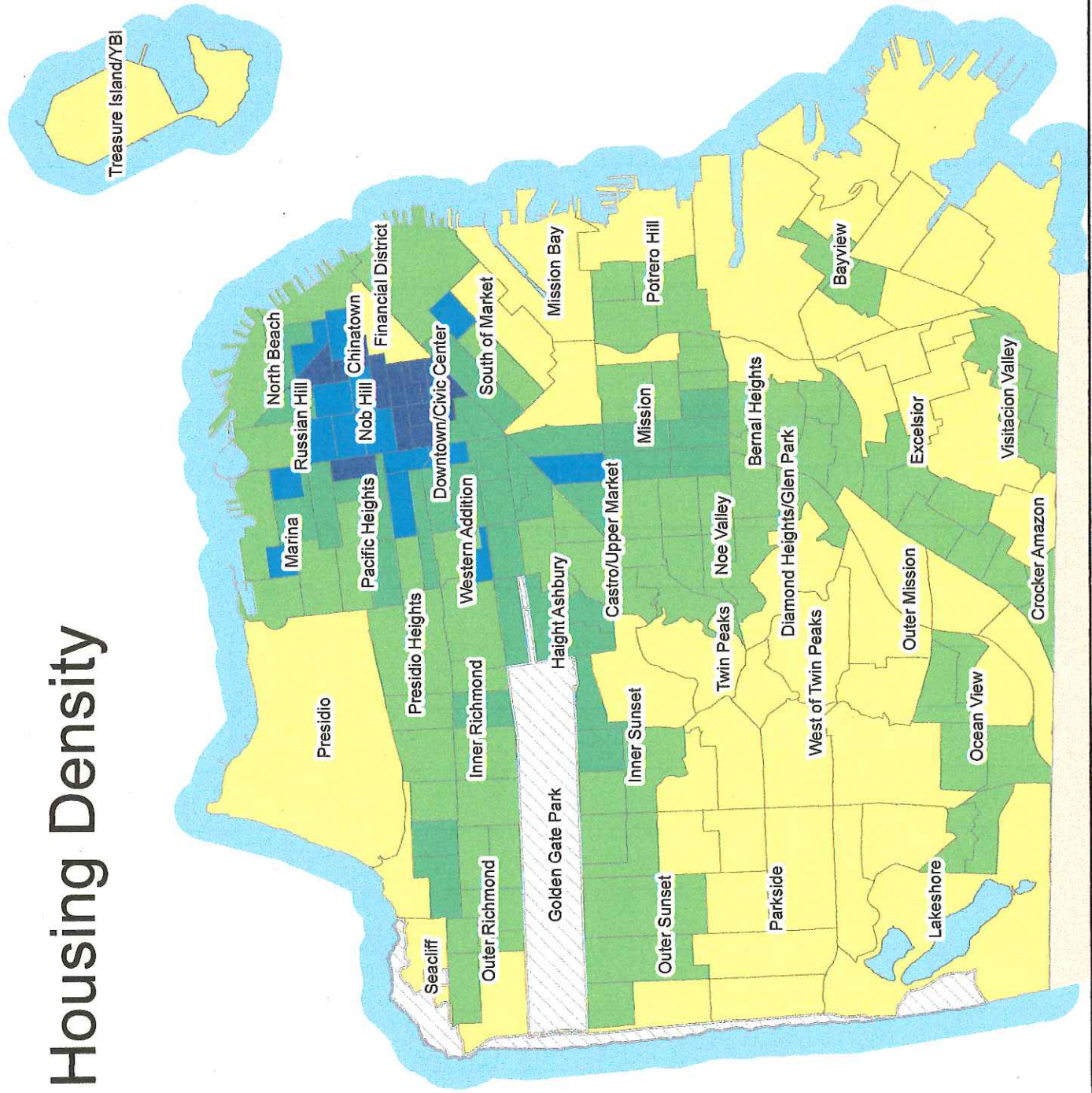
Residential Housing Density

Housing units per acre
per census tract



Source: US Census 2010

City and County of San Francisco
Department of Public Health
Environmental Health Section
Available at www.thehdmt.org



*Comments from: Ray Kutz
Sunnyside*

ADDITIONAL PUBLIC BENEFITS PRINCIPLES BR CAC MEETING COMMENTS- UPDATED

Principle #1: Accommodate a childcare facility and additional youth-friendly elements within the project.

Principle should include all youth 5-16.

b. The design and construction will need to ameliorate any possible noise impacts of in-home childcare businesses on neighboring residential units.

Principle #2: Maximize active ground-floor uses to complement the neighborhood's existing retail and ground-floor uses.

a. Parking should be added as an important ground or below ground floor use.

b. The burden of proof should be on the developer and site manager to show that a comparable service is not available nearby. More vacant commercial spaces are not needed and do not enhance the neighborhood.

Principle #3: Explore including additional programming and/or amenities designed to enhance quality of life for both new residents and neighbors.

~~a. **Principle #3:** Explore including additional programming and/or amenities designed to enhance quality of life for both new residents and neighbors.~~

a. The local arts priority is to provide/ensure parking for the expected Performing Arts Education Center of City College. The PAEC is expected to provide theater and music space that would be beneficial to the broader community, new residents and City College and regional affiliates.

A large public meeting space that can hold at least 100 people and doesn't charge more than a nominal fee (no more than \$100) for use would be of great benefit to the community. Such a space would be beneficial for local non-profits, particularly neighborhood associations, and could address multiple needs if it doubled as a center for activities for seniors, touring theater and children's camps. These uses can be successful if the site is well-maintained and managed for the safety of seniors and children. Again, we encourage pedestrian and improved transit options to improve access to the site.

FROM Anita Theo Harris

Jenny Perez
Westwood

Good Day,

I have seen very little communication from the Westwood Park board representatives regarding Residential Character District designation, which is codified in Planning Code section 244.1. I have not ~~also~~ seen response from city representatives on how to meet RCD requirements that protect our unique neighborhood characteristics.

The City Supervisors granted our Residential Character District in 1992, all city representatives are legally obligated to insure that all residents on Plymouth and surrounding streets are not denied the legally protected neighborhood that we all bought into and live in.

And while there is one statement in the staff responses to public input that indicate that some consideration of the fact that Westwood Park has been designated as an RCD district, is not legally binding and, more importantly, does not recognize the city's legal obligation to preserve our neighborhood character in going forward with this development.

Any development that borders Westwood Park must follow the RCD guidelines for our neighborhood. What has been proposed so far, ^{is} are not following The RCD Code.

We insist any RFP note on this.

Maximizing Affordable Housing and Community Infrastructure at the Balboa Reservoir

Council of Community Housing Organizations, January 11, 2016

San Francisco is in the midst of an affordable housing crisis in which most San Francisco residents cannot afford to live in the market-rate units currently being built. Meanwhile the City and nonprofits are forced to compete on the open market to purchase land for affordable housing. Sites like the Public Utilities Commission's (PUC) Balboa Reservoir represent an indispensable public resource that should be prioritized as a public good for this and future generations.

The Council of Community Housing Organizations (CCHO), representing 24 San Francisco affordable housing developers and advocates, believes that one key priority for the Balboa Reservoir site is to look at strategies to maximize affordability for a range of incomes and family sizes, while keeping in mind the need to also create community infrastructure and open space, and meet parking needs for adjacent City College. Arguing for "maximizing" the amount of affordable housing vis-à-vis market-rate or luxury housing, should not in any way be seen as a strategy that ignores the needs of CCSF and its neighbors. In particular, development (of any kind) on the site will have impacts that reduce available parking for CCSF students and for a possible future Performing Arts & Education Center (PAEC), and moreover has a potential to provide additional open space. Clearly the future of the Balboa Reservoir is a controversial topic. The political reality of achieving a viable consensus depends on pulling together the major themes and goals that have been raised, namely:

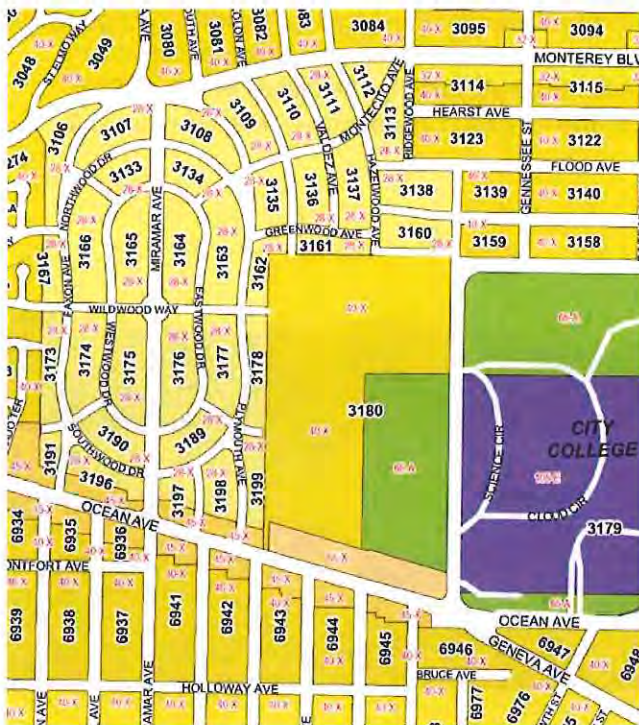
1. **Maximizing affordable housing for a range of incomes and family sizes,**
2. **Meeting CCSF's parking needs, and**
3. **Providing community benefits and open space.**

It is possible to achieve these goals with a master plan that maximizes 100% affordable housing with adequate on-site parking, a parking structure to relieve the parking needs of CCSF's working-class students and faculty, a half-acre to one-acre open space plan, and improved transit access to educational and employment destinations. Starting with the recommendations developed by Communities United for Health & Justice (CUHJ), CCHO consulted with our affordable housing development experts to analyze the site. What follows is an analysis of options available for the development parameters to be pursued for the Balboa Reservoir Site, touching on a number of issues: a.) Site Constraints, b.) the RFP Process, c.) Community Infrastructure and Parking, and d.) Affordability.



SITE CONSTRAINTS

1. **SITE SIZE.** 17.5 acres, about 650' east-west x about 1,150' north-south. A large part of that includes the sloped sides, leading up to the City College campus to the east and the residential areas to the west.
2. **DENSITY.** Developers could probably build anywhere between 600 and 1600 units depending on height and land devoted to open space and parking. At 40', 70% lot coverage results in about 1.5 million rentable s.f. on floors 2-4 (3 floors), probably more than 800 units @1250 gross s.f. each. This number increases if heights are raised.
3. **ZONING AND HEIGHT LIMITS.** The current zoning is 40'. Adjacent heights vary from 28' on the single-family homes to the west and north, 55' on Ocean Ave to the south, and 65' uphill on the City College half of the site along Phelan to the east. Because of the slopes, even 65' buildings may be far lower than the surrounding existing buildings. Taller building heights would allow smaller footprint buildings, and therefore more space for open space. Most affordable housing development in the area (such as the adjacent Phelan Loop building) builds at approx. 55' heights (4 stories of wood frame over a concrete podium with parking and retail/services), but we are starting to see 65' buildings as well. Sometimes affordable developers will build some 3-story townhouses, but usually the density is too low for that to support an entire development – this may be appropriate bordering the single-family home area to the west.
4. **PARCEL SIZE AND PHASING.** Typically affordable developers will build single buildings with 50-100 units, sometimes larger, rarely smaller, because of financing constraints. To get a sense of how large each building might be, a 100-unit family building, with four residential floors above a ground floor (55' height) and a 25% open space/setback, would take up about 40,000 square feet, or an area about 200' x 200'. If that same lot had a total of six stories instead of five (65'), it could provide 125 units. If it only had a total of 40' (current zoning) it could only provide 75 units. In larger parcels, these buildings may be built all at once, incrementally, or built in phases by different developers.



RFP PROCESS

1. **MASTER DEVELOPER AND PHASING.** The CAC and OEWD should be clear on setting minimum parameters for density, affordability, open space, parking and community benefits that are accepted by the City College and neighboring community, or else the planning process will be extremely difficult for all. The RFP should be for a master developer (and partners) to conduct a master planning process with community. The project could be phased with all parcels as 100% affordable, with the City as master developer—similar to the model used for HOPE-SF. Alternatively, IF there is to be any market-rate housing, a master plan could be developed that partners with affordable developers, setting aside several 100% affordable sites and imposing a certain amount of inclusionary on the market-rate sites.
2. **"FAIR MARKET VALUE."** The Public Utilities Commission (PUC) is required by rate-payers to get a fair market value from the land. One way to look at this is that under current zoning, fair market value would be calculated as development capacity at 40' heights, so, for example, subtracting some reasonable amount for slopes, streets and parks (perhaps 40%), the development capacity is for 3 floors of housing, assuming a certain amount of "inclusionary" affordable housing on the site. If we use the Prop K "public lands" standards as a model (which we acknowledge only apply to non-enterprise properties), this would be inclusionary units at 33% low-mod and another 17% middle. The fair market land cost would also need to subtract the cost of basic infrastructure improvements.

COMMUNITY INFRASTRUCTURE AND PARKING

1. **INFRASTRUCTURE.** Balboa is non-serviced land and would require that all infrastructure be built (sewer, water, electrical, streets). Two options available. One option is for infrastructure to be built by city, as is being done in the HOPE-SF projects, with potential for accessing State infrastructure money. Second option is to support some portion of the infrastructure costs by creating an IFD, which would require some amount of market-rate housing to throw off the property tax increment. The master developer would pay for the infrastructure. A preliminary estimate of the infrastructure based on CCHO developer's experience is about \$50K additional per unit, or about \$1-1.5 million per acre.
2. **OPEN SPACE.** Open space has also been brought up repeatedly in public conversations. A good amount of "passive" open space and community garden and fruit-bearing trees could be part of the sloping areas to the north and east of the site. However, for this amount of development, something with a gathering area, grass, and interactive exercise and play area would probably make sense to center the development. Also as a rainwater catchment swale, given the topography of the site (it's a reservoir!). Ideally it would be fronted by other active uses, for example whatever community facilities or childcare center might be contemplated on the ground floor of an adjacent building. For comparison, another park currently being built on PUC land, at 17th & Folsom, is 0.74 acres, or about 30,000 s.f.
3. **PARKING.** A major concern has been raised by City College students, faculty, and advocates has been about the loss of parking for City College, especially if the Performing Arts Center ever gets built. Approximately 300,000 s.f. of the site is currently being used as parking, or about 1,000 parking spaces, parking that is currently used for student and faculty parking, especially during peak periods. If that parking were to be retained in a 6-story parking structure, much of the current parking could be accommodated in a 50,000 s.f. parcel within the site, and, if located adjacent to the City College parcel, could be accessed directly from the existing City College parking at an upper floor. One can imagine a state-of-the-art "green" auto and bicycle parking structure with solar power, electric car outlets and car-share pods, and possibly play fields on the top floor. Additionally, at 4-6 story buildings, affordable developers are typically able to accommodate at least 0.5 to 1 parking space for every unit, provided on the ground floor of the building, and hidden behind either commercial space or townhouse units, depending on location within the site.

AFFORDABILITY

1. **AFFORDABILITY MIX.** A 17-acre site that is 100% affordable housing (below 60% AMI), with community amenities, is absolutely possible, just a question of funds available and phasing. Note that 60% AMI (not adjusted for SF) is a single person earning \$40,000/yr. or a family of four earning \$60,000/yr. Combining this with moderate (60-90% AMI) or middle (90-120% AMI) is more difficult because developers can't leverage Federal funds which are only available for low-income units. For comparison, 90% AMI is a single person earning \$64,000/yr. (a tenured teacher), and 120% AMI is a single person earning \$85,000/yr. or a family of four earning \$120,000/yr. We can look at other master planned projects in the City for comparison. The Schlage Lock development in Vis Valley is approx 20-22 acres, 1600 units, with new park, neighborhood retail, TIDF, all new infrastructure (plus haz mat clean up) and 25% affordable with a chunk of units as supportive housing. On the other hand, PUC is a public site, with a superior location for real estate and transit, etc. The Giants Mission Rock project, on public land, is providing 40% affordable units at a range of incomes, all on-site, as inclusionary units (no stand-alone affordable buildings). Finally, the HOPE-SF projects are each done by a Master Developer specializing in affordable housing, for a range of incomes but with a majority of units for extremely low-income residents.
2. **LOW-INCOME UNITS (0-60% AMI).** Affordable buildings built by affordable developers typically serve families earning 0-60% of the median income and below. If MOHCD funding is available, the capacity to develop as 100% affordable is there, probably phased, as tax credit developments, built as stand-alone affordable developments that are financed by MOHCD and 4% credits. Each stand-alone affordable housing development would be average 100 units in order to be cost efficient and operate well. This would require \$250K/unit in MOHCD gap funds x 100 units each = \$10 million for each stand-alone building. Infrastructure costs (streets, electricity, water, sewer) need to be analyzed, but could probably be an additional \$50K/unit.
3. **MODERATE-INCOME UNITS (60-90% AMI).** Units btwn. 60-90% AMI are hard to develop and finance b/c they are low enough not to be economical but high enough that LIHTC and welfare exemptions don't apply. Units btwn 60-90% typically are inclusionary units, because these are not financeable with tax credits, and market-rate development can internally cross-subsidize them. There was a part in the last Prop A housing bond for middle income, which could potentially be used to subsidize some of those units as part of affordable housing developments. One back-of-the-envelope estimate is that the mod-income units would require an additional \$100K subsidy (so \$350K) from MOHCD.
4. **MIDDLE-INCOME HOMEOWNERSHIP / TOWNHOUSES (70-120% AMI).** The area adjacent to the single family homes would best be some kind of low-rise development, probably townhouses with back yards against the adjacent homes. These could be three-story buildings, with two story townhouses stacked over one-story accessible units. These would typically be targeted at 70-120% AMI, perhaps with 1-bedroom units up to 90% AMI and a mix of 2- and 3-bedroom units up to 120% AMI. Being clear on the definitions of "middle-income" is extremely important – for example, when a number like "150% AMI" is discussed, it is important to understand that this is a single person earning \$110,000/year!
5. **MARKET-RATE UNITS.** One way provide moderate-income units is to allow some amount of market-rate development and require a high-percent of inclusionary at a range of AMI levels between 60-120% AMI. Thirty or even fifty percent inclusionary would seem reasonable given that this is public land and there is precedent (Giants Prop D required 40% on-site affordable units). However, the question remains whether it should be City policy to allow any market-rate units on public land. While applying only to City department properties, the voters in last November's Proposition K Public Lands measure weighed in that public lands, when not used for other public functions, should be reserved for affordable housing to benefit current and future generations.

6. **ALTERNATE AFFORDABILITY SCENARIOS.** Following are five possible alternative scenarios that could be analyzed for feasibility. The first three allow some amount of market-rate housing to cross-subsidize moderate income housing and provide future property tax revenue to pay for infrastructure and other community benefits; the last two would depend on a commitment to public subsidy and would likely have to be phased in over time.
- a. **50/50 split:** 25% low-income built by nonprofits (basically, two new buildings with 100+ units each), 25% “middle-income” as inclusionary within the market rate, and 50% market rate (so the market would have a 33% inclusionary). This scenario allows three-quarters of the site to be controlled by market-rate developers.
 - b. **60/40 split:** We had a year ago presented to OEWD the idea of minimum 50% low-income (half the site, built by nonprofits), another 10% moderate income inclusionary, and the final 40% as market-rate. The “inclusionary” could be provided by the market-rate developer as an “80/20” deal, as is being done in the Pier 70 development.
 - c. **66/33 split:** Another scenario would provide 50% low-income, 17% moderate, and 33% market (so 50% inclusionary), to achieve a two-thirds affordable to one-third market-rate split.
 - d. **100% low-income:** This scenario, entirely subsidized by public funds, would have to be phased over time and by different nonprofit developers, as funding becomes available.
 - e. **100% low-mod:** As suggested by CUHJ, another model would evenly split the income targets, with 1/3 low-income (0-60% AMI), 1/3 moderate (60-90% AMI), and 1/3 middle (90-120% AMI).



DATE: January 11, 2016

TO: Members of the Balboa Reservoir Community Advisory Committee

FROM: Linda Judge, WPA Balboa Reservoir Committee Chair

RE: Revised Principals and Parameters (Housing, Public Realm ["Open Space"], Urban Design and Neighborhood Character).

Dear Members of the BR CAC:

Following distribution of the revised Principals and Parameters ("P&P") by City Staff, the attached matrices were compiled by the Westwood Park Balboa Reservoir Committee. They compare WP submitted Community concerns to the Revised P&P's.

Please consider:

1. Comparison Results:

There were many draft parameters in the original P&P's proposed by the Planning Department and MOEWD that WPA accepted without request for changes.

It appears only minor revisions were made in response to WPA proposed items. However, the larger changes were not incorporated (e.g., affordability mix weighted toward middle-class, contiguous open space and total amount of open space, recognition and respect of the Westwood Park RCD status and concerns of WP neighbors immediately adjacent to the site).

The results are of significant concern to the WP Community.

REFERENCE	TOPIC	INITIAL CITY PROPOSED	WPA BRC PROPOSED (AND WPA BOARD APPROVED)	REVISED - BR CAC APPROVED (CITY PUBLISHED)	WPA RECOMMENDATIONS IMPLEMENTED?
H	HOUSING				
H-P1	Principal #1: Build new housing for people at a range of income levels				
H-P1a		"Make at least 33% of total housing units permanently affordable to low or moderate- income households. <i>(Note: This is consistent with Proposition K (2014), which is described above. "</i>	"Make at least maximum 33% of total housing units permanently affordable to low or moderate income households..."	"Make at least 33% of total housing units permanently affordable to low or moderate - income households, consistent with Prop K (2014) . <i>(Note: This is consistent with Proposition K (2014), which is described above.)"</i>	No
H-P1a1		"Make at least 15% of total housing units affordable to low-income households (earning up to 55% of Area Median Income [AMI])."	"Make at least 15% of total housing units affordable to low-income households (earning up to 55% of Area Median Income [AMI])."	"Make at least 15% of total housing units affordable to low-income households (earning up to 55% of Area Median Income [AMI])."	No
H-P1a2		"Make an additional 18% (or more) of total housing units affordable to low or middle income households (earning up to 120% of AMI)."	"Make an additional the remaining 18% (or more) of total housing units affordable to low or middle income households (earning up to 120% of AMI)." Note: Since the most underserved group is the middle income household, they should have the larger percentage of the housing allocation.	"Make an additional 18% (or more) of total housing units affordable to low or middle income households (earning up to 120% of AMI)."	No
H-P1b		"Maximize the number of affordable units for low (55% of AMI), moderate (120% of AMI), and middle income (earning up to 150% of AMI) households; aim to include at least 50% of housing affordable to low, moderate and middle income households)."	"Maximize the number of affordable units for low (55% of AMI), moderate (120% of AMI), and middle income (earning up to 150% of AMI) households; aim to include at least 50% of housing affordable to low, moderate and middle income households)." Note: This is not acceptable to Westwood Park community. See note above re: middle income households.	"Maximize the number of affordable units for low (55% of AMI), moderate (120% of AMI), and middle income (earning up to 150% of AMI) households; aim to include at least 50% of housing affordable to low, moderate and middle income households)."	No
H-P1d		None	None	CAC Added: "Exceed these minimum affordable housing percentages to the greatest extent possible provided that all other development parameters are also met."	No
H-P1e		None	None	CAC Added: "Provide a mix of rental and ownership units"	No
H-P2a		"Maximize the proportion of affordable housing that is provided on-site (as opposed to off-site or paying an in lieu fee)."	WPA Community Comment: We agree that development of on-site affordable housing is key to facilitating an integrated and vibrant neighborhood, one which crosses over socio-economic boundaries in order to bring residents together ad create a strong community. We feel it is important for SF Planning and MOEWD to consider holding all developers in San Francisco to this same standard, and exclude any future approved city residential developments from off-site affordable housing, or "in-lieu" fees, which have placed an undue burden on current and future developments in existing cohesive and historic San Francisco neighborhoods.	"Maximize the proportion of Provide all affordable housing that is provided on site (as opposed to off-site or through paying an in-lieu fee)."	Yes
H-P3a		"Within the confines of other relevant parameters (e.g. neighborhood character, open space, transportation), and subject to the desired units and family-oriented units cied above, maximize the amount of new ousing created to address the current and projected affordability challenges faced by the neighborhood and the City."	"Within the confines of other relevant parameters (e.g. Principal 1(a) , neighborhood character, open space, transportation), and subject to the desired units and family-oriented units cied above, maximize the amount of new ousing created to address the current and projected affordability challenges faced by the neighborhood and the City as proposed and outlined by the 2009 Balboa Park Area Station Plan. "	"Within the confines of other relevant parameters (e.g. neighborhood character, open space, transportation, City College), and subject to the desired units and family-oriented units cied above, maximize the amount of new ousing created to address the current and projected affordability challenges faced by the neighborhood and the City."	No
H-P3b		"Maximize the pace of housing creation without compromising the quality of design or construction or outpacing needed transportation infrastructure."	"Create Maximize the pace of housing creation without compromising the quality of design or construction or outpacing needed transportation infrastructure."	"Maximize the pace of housing creation without compromising the quality of design or construction or outpacing needed transportation infrastructure."	No

REFERENCE	TOPIC	INITIAL CITY PROPOSED	WPA BRC PROPOSED (AND WPA BOARD APPROVED)	REVISED - BR CAC APPROVED (CITY PUBLISHED)	WPA RECOMMENDATIONS IMPLEMENTED?
OS	OPEN SPACE				
OS-P1	<i>Principal #1: Develop a cohesive public realm (network of street and open spaces) which provide a range of programmed and unprogrammed spaces for functional, recreational and social activities. Public spaces should be visible and activated from adjacent street and uses; connect gathering places, destinations and residences on the site and beyond; and provide a sense of identity unique to the neighborhood.</i>				
OS-P1a		"Create a publicly-accessible open space network, totaling at least 4 acres, including off-street walking routes or linear parks, and privately owned public spaces (POPOS) but excluding streets. Aim to exceed this minimum requirement."	"Create a publicly-accessible open space network, totaling at least 4 5 to 7 acres, including off-street walking routes or linear parks, and privately owned public spaces (POPOS) but excluding streets. Aim to exceed this minimum requirement." Note: The Westwood Park community feels strongly that a minimum of 5 to 7 acres of parks and open space should be included.	"Create a publicly-accessible open space network, totaling at least 4 acres at ground level , including parks, playgrounds, gardens, picnic areas , off-street walking routes or linear parks, and privately owned public spaces (POPOS) but excluding streets. Aim to exceed this minimum requirement. Spaces should accommodate multiple types of open space activities or programs within a given day, week, or time of year. "	No.
OS-P1b		"Create one significant open space to serve as a park for the site and neighborhoods beyond the Balboa Reservoir (aka Balboa Public Site). Include a mix of programmed and unprogrammed spaces based on community input and neighborhood need. Rather than creating a large void, the park should be varied in design and uses, be scaled appropriately with the pattern of blocks and buildings, and create a sense of shared neighborhood identity. This contiguous open space (which may extend multiple blocks if intersected by shared public ways or pedestrian-priority streets), should be at least 1.5 acres and would constitute a portion of the minimum 4 acres of open space referenced in Section 2.a. This park will be designed with the community in a public process."	"Create one significant open space to serve as a park for the site and neighborhoods beyond the Balboa Reservoir (aka Balboa Public Site). Include a mix of programmed and unprogrammed spaces based on community input and neighborhood need. Rather than creating a large void, the park should be varied in design and uses, be scaled appropriately with the pattern of blocks and buildings, and create a sense of shared neighborhood identity. This contiguous continuous significant open space (which may be intersected only by pedestrian pathways) (which may extend multiple blocks if intersected by shared public ways or pedestrian-priority streets) , should be at least 1.5 2 acres and would constitute a portion of the minimum 4 5 to 7 acres of open space referenced in Section 2.a. This park will be designed with the community in a public process." Note: Please note, the Westwood Park specific survey as well as the City Planning Survey both favor the need of large open spaces.	"Create one significant open space at ground level to serve as a park for the site and neighborhoods beyond the Balboa Reservoir (aka Balboa Public Site). Include a mix of programmed and unprogrammed spaces based on community input and neighborhood need. Rather than creating a large void, the park should be varied in design and uses, be scaled appropriately with the pattern of blocks and buildings, and create a sense of shared neighborhood identity. This contiguous open space (which may extend multiple blocks if intersected by shared public ways or pedestrian-priority streets), should be at least 1.5 acres and would constitute a portion of the minimum 4 acres of at grade open space referenced in Section 2.a. This park will be designed with the community in a public process."	No
OS-P1d		"Create a walking route or network of walking routes which facilitates walking for recreational purposes, minimizing street crossings and connecting or defining on-site open spaces. Pedestrian networks should connect to surrounding networks of streets, paths and open spaces."	"Create a walking route or network of walking routes which facilitates walking for recreational purposes, minimizing street crossings and connecting or defining on-site open spaces. Pedestrian networks should connect to surrounding networks of streets, paths and open spaces while minimizing the impact on the adjacent Westwood Park neighborhood. "	"Create a walking route or network of walking routes which facilitates walking for recreational purposes, minimizing street crossings and connecting or defining on-site open spaces. Pedestrian networks should connect to surrounding networks of streets, paths and open spaces. Walking routes should be supportive of and consistent with parameters 1(e) and 1(f). "	No, but see "CAC Response to Open Space Comments which addresses the change. (i.e., City and CC agree with privacy concerns of WP and are expanding that same concern to CCSF, Avalon, and Riordan).
OS-P1f		"Respect the privacy and scale of adjacent uses, especially Westwood Park neighbors to the west with appropriate public space design, landscape, topography or walking routes to serve as a buffer or transition from the new buildings on the Balboa Public Site."	"Respect the privacy and scale of adjacent uses, especially Westwood Park neighbors to the west with appropriate public space design, landscape, or topography and walking routes to serve as a buffer or transition from the new buildings on the Balboa Public Site."	f. Respect the privacy and scale of all adjacent uses, especially Westwood Park neighbors to the west with appropriate public space design, landscape, topography and walking routes to serve as a buffer or transition from the new buildings on the Balboa Public Site.	No, but see "CAC Response to Open Space Comments which addresses the change. (i.e., City and CC agree with privacy concerns of WP and are expanding that same concern to CCSF, Avalon, and Riordan).
OS-P1g		"Build in enough flexibility to the open space network to allow for it to evolve with changing neighborhood needs , incorporating successive layers of programming, public art, and community stewardship over time."	"Build in enough flexibility to the open space network to allow for it to evolve with changing neighborhood needs , incorporating successive layers of programming, public art, and community stewardship over time." Note: In order to preserve the open space in perpetuity, any open space buffer zone between the new and the Westwood Park neighborhood, as well as the open space defined in Principal1(b), should be deeded to San Francisco Recreation and Park Department, or otherwise legally protected from any future development.	"Build in enough flexibility to the open space network to allow for it to evolve with changing neighborhood needs , incorporating successive layers of programming, public art, and community stewardship over time. As these elements evolve to respond to changing needs, the spaces shall remain unbuilt and open to the public. "	Yes
OS-P1h		"Prioritize views of Mt Davidson, Mt Bruno and the main entrance to the CCSF Science Hall".	"Prioritize views of Mt Davidson, Mt Bruno and the main entrance to the CCSF Science Hall without impeding the views of residents in the surrounding neighborhoods ".	"Prioritize views from public spaces to of Mt Davidson, Mt Bruno and the main entrance to the City College CCSF Science Hall".	No
OS-P1i		"Emphasize the special nature of the area through distinctive landscaping and other features that complement and respect adjacent neighborhoods".	"Emphasize the special nature of the area through distinctive landscaping and other features that complement and respect adjacent neighborhoods and Bishop Riordan High School ".	"Emphasize the special nature of the area through distinctive landscaping and other features that complement and respect adjacent neighborhoods and educational institutions ".	Yes
OS-P1	<i>Principal #2: Design the public realm as a useful, safe and welcoming part of daily experience for diverse neighbors of all ages, visitors to the site, and CCSF affiliates.</i>		n/a	<i>Principal #2: Design the public realm as a useful, safe and welcoming part of daily experience for diverse neighbors of all ages, visitors to the site, and City College CCSF affiliates.</i>	

REFERENCE	TOPIC	INITIAL CITY PROPOSED	WPA BRC PROPOSED (AND WPA BOARD APPROVED)	REVISED - BR CAC APPROVED (CITY PUBLISHED)	WPA RECOMMENDATIONS IMPLEMENTED?	
OS-P2c		"Incorporate linear spaces, smaller common areas, courtyards or mid-block alleys into the site and buildings to moderate building scale , provide intimate spaces and diversify activities in the public realm. Wherever possible, pair spaces with complementary adjacent land uses to help activate the public realm, for example small plazas near natural gathering places, playgrounds near daycare etc".	"Incorporate linear spaces, smaller common areas, courtyards or mid-block alleys into the site and buildings to moderate building scale , provide intimate spaces and diversify activities in the public realm. Wherever possible, pair spaces with complementary adjacent land uses to help activate the public realm, for example small plazas near natural gathering places, playgrounds near daycare etc".	"Incorporate linear spaces, smaller common areas, courtyards or mid-block alleys into the site and buildings to moderate building scale , provide intimate spaces and diversify activities in the public realm. Wherever possible, pair spaces with complementary adjacent land uses to help activate the public realm, for example small plazas near natural gathering places, playgrounds near daycare etc".	No. See "CAC response to Open Space Comments" for more details.	
OS-P2e		"Propose a gradual transformation of the site, maintaining access to usable open space throughout all construction phases to allow people to experiment with new ways of using the site, and to give the community time to adapt to the physical changes of the site. For example, create a nursery for trees to mature on-site in advance of future site construction".	"Propose a gradual transformation of the site, maintaining access to usable open space throughout all construction phases to allow people to experiment with new ways of using the site, and to give the community time to adapt to the physical changes of the site. For example, create a nursery for trees to mature on-site in advance of future site construction with careful consideration of any site changes on the neighboring 98-year-old foundations, as well as displacement of wildlife".	"Propose a gradual transformation of the site, maintaining access to usable open space throughout all construction phases to allow people to experiment with new ways of using the site, and to give the community time to adapt to the physical changes of the site. For example, create a nursery for trees to mature on-site in advance of future site construction".	No. "CAC Response to Open Space Comments" addresses law re: wildlife, but no discussion on WP 98 year old foundations and plaster walls.	
OS-P3	Principal #3: Incorporate the different needs and hours of activities dor diverse users in the area.					
OS-P3a		"Ensure opportunities for people of all ages, including students, seniors and families, to utilize the public realm".	"Ensure safe opportunities for people of all ages, including students, seniors and families, to utilize the public realm".	"Ensure safe and accesible opportunities for people of all ages, including students, seniors and families, to utilize the public realm".	Yes	
OS-P3c		"Locate gathering places at natural confluences of pedestrian activity, walking routes, and public life".	"Locate gathering places at natural confluences of pedestrian activity, walking routes, and public life and away from the private Westwood Park backyards".	"Locate gathering places at natural confluences of pedestrian activity, walking routes, and public life, in support of the privacy concerns addressed in parameter 1(f)".	Yes, although Westwood Park is the only adjacent residential neighborhood. Please see comments to P1(f).	
OS-P4	Principal #4: Privately-owned public open spaces (POPOS) should read as part of an overall, coordinated pattern of open space. Recognize that per City policy, buildings will be required to provide a minimum 80 square feet of private open space per unit or 60 square feet of public open space per unit (above and beyond the public open space requirements above).	Westwood Park Community Comments: Please define how POPOS in Principal #1 is different from POPOS in Principal #4. The requirement in Principal #4 appears to suggest that the 80 sq.ft. or 60 sq.ft. will be in addition to the open space described in Principal #1, please confirm.			Principal #4: Privately-owned public open spaces (POPOS) should read as part of an overall, coordinated pattern of open space. Recognize that per City policy, buildings will be required to provide a minimum 80 square feet of private open space per unit or 60 square feet of public open space per unit (above and beyond the public open space requirements above). Private open spaces should meet or exceed City regulations that require a minimum of 80 square feet of private open space per unit, or 60 square feet if the space is made publicly accesible (above and beyond the project-wide public open space are minimums in Principle #1). Any publicly accesible open space associated with an individual building should read as part of an overall, coordinated pattern of open space.	Yes.
OS-P4b		"Connect courtyards and/or mid-block alleys wherever possible".	"Connect courtyards and/or mid-block alleys wherever possible". Westwood Park Community Comments: The community would like to be provided with examples within San Francisco where alleys have been successfully implemented in recent new or reconfigured developments, and where safety is prioritized and enforced. The WP Community prefers that alleys are well lit and safe, and that alleys are not considered as part of the proposed developments' total open space.	"Connect courtyards and/or mid-block alleys wherever possible".	No. "CAC Response to Open Space" gives details of alleys, why they think they are safe and will work, and gives examples of 'sucessful' alleys.	
OS-P4c		"Private open spaces should be intimate and inviting. They should maximize green space, programmable spaces and visibility from residential units".	"Private open spaces should be intimate and inviting. They should maximize green space, programmable spaces and visibility from residential units". Westwood Park Community Comments: WP assumes if Principal 4(c) is specific to POPOS within new buildings on the site, then WP does not have any comments.	"Private open spaces should be human scale, intimate and inviting. They should maximize green space, programmable spaces and visibility from residential units".	"Human scale added" to address concern over 'intimate' - please see 'CAC Response to Open Space'	
OS-P5	Principle #5: Design a variety of open spaces within the public realm network to create a variety of sensory experiences, incorporating the surrounding natural and/or cultural environment into the siting and design.					
OS-P5b		"Maximize sun exposure in public spaces".	"Maximize sun exposure in public spaces without impacting sun exposure to surrounding neighborhoods".	"Maximize sun exposure in public spaces".	No	
OS-P6	Principle #6: All public rights of way should be attractive, safe and useable public open spaces with generous landscaping, lighting and greenery as appropriate to the scale and use of buildings and the site. Street design should be built to standards established in Better Streets Plan.					

REFERENCE	TOPIC	INITIAL CITY PROPOSED	WPA BRC PROPOSED (AND WPA BOARD APPROVED)	REVISED - BR CAC APPROVED (CITY PUBLISHED)	WPA RECOMMENDATIONS IMPLEMENTED?
OS-P6a		"Design new streets and alleys as public spaces which create intimate, safe pedestrian environments, while encouraging social interactions between diverse users from the site, adjacent neighborhoods and CCSF. Use shared streets/public ways and living alleys where appropriate".	"Design new streets and alleys as public spaces which create intimate , safe pedestrian environments, while encouraging social interactions between diverse users from the site, adjacent neighborhoods and CCSF. Use shared streets/public ways and living alleys where appropriate".	"Design new streets and alleys as public spaces which create intimate, safe pedestrian environments, while encouraging social interactions between diverse users from the site, adjacent neighborhoods and CCSF. Use shared streets/public ways and living alleys where appropriate".	No - see OS-P4b Community comment re: alleys.
OS-P6b		"Street and sidewalk designs should be consistent with Better Streets Plan and other applicable standards, such as utility separation requirements. Streets will generally fall under neighborhood commercial , neighborhood residential, park edge, alley or shared public way Better Streets Plan types".	"Street and sidewalk designs should be consistent with Better Streets Plan and other applicable standards, such as utility separation requirements. Streets will generally fall under neighborhood commercial , neighborhood residential, park edge, alley or shared public way Better Streets Plan types" . Westwood Park Community Comments: The community would like to understand where "neighborhood commercial" will be placed.	"Street and sidewalk designs should be consistent with Better Streets Plan and other applicable standards, such as utility separation requirements. Streets will generally fall under Better Street Plan's Neighborhood Commercial , neighborhood commercial , Neighborhood Residential neighborhood residential , Park Edge park edge , Alley alley or shared public way Shared Public Way Better Streets Plan types".	No. CAC indicates developer will decide.
OS-P7	Principle #7: Plan and design in coordination with a long-term, sustainable maintenance plan and community-serving programming.				
OS-P7b		"Describe how parks and open spaces will be managed or programmed to promote safe and active use and enjoyment. Include a funding proposal to support these management and programming activities".	"Describe how parks and open spaces will be managed or programmed to promote safe and active use and enjoyment and who will be accountable on a day-to-day and long-term basis. Include a funding proposal to support these management and programming activities".	"Describe how parks and open spaces will be managed or programmed to promote safe and active use and enjoyment. Include a funding proposal to support these management and programming activities".	No - Assume CAC and City's positon is, the desired edit is already understood to be imbedded in the Parameter definition

REFERENCE	TOPIC	INITIAL CITY PROPOSED	WPA BRC PROPOSED (AND WPA BOARD APPROVED)	REVISED - BR CAC APPROVED (CITY PUBLISHED)	WPA RECOMMENDATIONS IMPLEMENTED?
NC	URBAN DESIGN & NEIGHBORHOOD CHARACTER				
NC-P1	<i>Principle #1: Connect and relate to the surrounding fabric of streets, blocks and open spaces.</i>				
NC-P1a		"Create a general block scale that respects nearby neighborhoods, provides permeability, and uses a pedestrian network to connect the surrounding fabric of streets and open spaces".	"Create a general block scale that respects nearby neighborhoods, provides permeability, and uses a pedestrian network to connect the surrounding fabric of streets and open spaces". WP Community Comment: Please provide examples of permeability. One of the positive characteristics of the WP neighborhood is that there are very few 'through streets' from WP into other neighborhoods. This provides a sense of a close-knit neighborhood within an urban setting. WP residents purchased and retain high homeownership as a result of this desirable neighborhood characteristic. A new development would benefit from the same concept; reasonable but limited traffic access into and out of the neighborhood so that it is pedestrian oriented, family friendly, bike friendly, safe, and develops its own unique neighborhood character) This would also help with traffic calming within the two neighborhoods.	"Create a general block scale that respects nearby neighborhoods, provides permeability, and uses a pedestrian network to connect the surrounding fabric of streets and open spaces".	See City Staff comment (5) provided in "Responses to Public Comment and Questions" doc.
NC-P2	<i>Principle #2: Harmonize the relationships between existing buildings, streets and open spaces.</i>				
NC-P2a		"Design the site and buildings to integrate with, respect and reflect local character, scale, design, and uses".	"Design the site and buildings to integrate with, respect and reflect local character, scale, design, and uses". WP Community Comment: While the roots of the Sunnyside neighborhood go back to the early 1900s, Westwood Park homes were primarily built in the 1920s. The architecture of those neighborhoods reflects a shift from Victorian and Edwardian homes, which predominated before and immediately after the turn of the century. In the case of Westwood Park, it was developed as a "residence park" of bungalow-style homes primarily to offer middle class residents the opportunity to escape the noise, pollution and crowded conditions of downtown San Francisco. Any development on the Balboa Reservoir site should be respectful of the original intent of the development of the area West of Twin Peaks; complementing and highlighting the characteristics of the historic architectural style of the surrounding neighborhoods. Buildings that have recently predominated in new developments within the Mission District (boxy, glass fronts, loft style), are starkly out of character with the surrounding structures, just as six-story glass and steel buildings would be out of character in Cow Hollow, Steiner Street, Nob Hill or in the Inner Richmond district. Any project that follows the current architectural design trend in downtown and some of the adjacent neighborhoods would invoke a significantly negative response from existing residents in Westwood Park. "Ocean Avenue Historic Preservation Resource Guide" references additional material relevant to the BR site and is available here: http://www.oceanavenueassociation.org/the_cbd/reports	"Design the site and buildings to integrate with, respect and reflect local character, scale, design, and uses".	See City Staff comment (14) provided in "Responses to Public Comment and Questions" doc.
NC-P2c		"Locate taller buildings where adjacent buildings are tallest, with heights tapering down on approach to single-family neighborhoods. Buildings on the west side of site should generally be of lower height than the east, and respect the scale, privacy and light of adjacent homes to the west".	"Locate taller buildings where adjacent buildings are tallest, with heights tapering down on approach to single-family neighborhoods. Buildings on the west side of site should generally be of lower height than the east, and respect the scale, privacy and light of adjacent homes to the west".	"Locate taller buildings where adjacent buildings are tallest, with heights tapering down on approach to single-family neighborhoods. Buildings on the west side of site should generally be of lower height than the east, and respect the scale, privacy and light of adjacent homes to the west".	Yes.
NC-P2d		"Building heights should fall within a range of 25' to 65' feet, allowing for heights of up to 85' in the eastern portion of the site where, due to economic efficiencies, the additional height allows for additional community benefits".	"Building heights should fall within a range of 25' to 65' 40' feet, allowing for heights of up to 85' 65' in the eastern portion of the site where, due to economic efficiencies, the additional height allows for additional community benefits". WP Community Comment: The current zoning of Westwood Park is 28'. The current zoning of the Balboa reservoir site is 40' on the west and a small slice on the east which is 65', as agreed to and implemented within the 2009 Balboa Park Station Area Plan, including the accompanying FEIR (Final EIR). Please describe for the community how an 85' height maximum was derived, given the significant community input that resulted in the 40' height restriction within the 2009 plan. The community concern is that desired open space will be negotiated for increased height and density. Please address this concern. Please inform the public how the new Density Bonus (Affordable Housing Bonus Plan) would impact the BR development site. Please indicate and provide examples of current density guidelines compared to potential density guidelines under the new Bonus Plan.	"Building heights should fall within a range of 25' to 65' feet, allowing for heights of up to 85' in the eastern portion of the site where, due to economic efficiencies, the additional height allows for additional community benefits".	No. See City Staff comment (19) provided in "Responses to Public Comment and Questions" doc.
NC-P2e		"Site and design buildings to enhance public spaces, while minimizing their impacts on existing residential privacy and access to light".	"Site and design buildings to enhance public spaces, while minimizing maintaining their impact on existing residential privacy and access to light".	"Site and design buildings to enhance public spaces, while minimizing their impacts on existing residential privacy and access to light".	No
NC-P4	<i>Principle #4: Express neighborhood character, celebrate cultural history and build on neighborhood activities.</i>				
NC-P4c		"Design the site and public realm to respect and reflect Westwood Park community heritage, the City College campus, and the role of Ocean and Phelan as a "gateway" to the neighborhood".	None	"Design the site and public realm to respect and reflect Westwood Park community heritage, the City College campus, and the role of Ocean and Phelan as a "gateway" to the neighborhood".	City/CAC deleted Westwood Park - Why? Please return to the original text.

(item xi)

1. What AJ just said, given the present circumstances, the present environment, how that will go forward?
2. Lower reservoir is for overflow parking.
3. The Lower reservoir's description is an area for dog-walking.
4. Parking should be mentioned.
5. This is part of the CEQA process.

3. 2014(?) study of current uses of the Reservoir site mentioned dog walking but ignored the present and historic use of site for student parking.

4. 45 - Those present uses of the land must be acknowledged to properly enable the proper environmental review process.

Additional Public Benefits Parameters.

a. CAC

i. Lee.

1. In the First slide there are the amenities desired. How did you narrow into these 7 bullet points?
 1. Emily Lesk. Not a narrowing, this is exhaustive list from what we heard. We believe everything on this list is covered in the full set of the parameters. Highlighted that additional public benefits are a catch-all from this exhaustive list that weren't covered in the fall.
 2. Spinali. Mapped what was covered by other parameters and then additional items are not covered by other parameters.
 3. Emily Lesk. Let us know if anything was missed.

ii. Favetti.

1. Looks like a wish list.
2. We have a need for youth and childcare center and recreation facilities.
3. Glad to see housing for multi-generations.
4. My kids are millennials or Young Urban Creatives.

iii. Spinali.

1. Principle 2. Maximizing an active first floor.
2. We already see this on Ocean Avenue and there are vacancies where there shouldn't be.
3. We want to ensure there's vibrancy and mitigate vacancy.
4. Active things happening on the ground floor will be important for this site.

b. Public Comment

i. Sheila. Teacher, CCSF.

1. Live in Oakland.
2. Spoke at 12/15 meeting.
3. Parking is heavily used by CCSF students and faculty.
4. My students need a place to park.
5. Developer needs to create permanent parking for CCSF, that isn't shared that matches number of open spots that are there.
6. This area is land-locked, there is no way to access this plot of land.
7. It will be hard to get to these things because there is no access.

ii. Ray. Sunnyside.