



CESAR
CHAVEZ
EAST
COMMUNITY
DESIGN PLAN

community meeting 2

SAN FRANCISCO PLANNING DEPARTMENT | JUNE 2011

TODAY'S MEETING | **June 27th, 2011**

INTRODUCTION

- Check-in
- Who's in the room?
- Southeast San Francisco context (Wells Lawson, Mayor's Office)

PRESENTATION: Rethinking East Cesar Chavez

- YOUR VISION FOR THE CORRIDOR
- PROPOSED SHORT TERM IMPROVEMENTS
- SFMTA BICYCLE PROJECT

DISCUSSION

OPEN HOUSE

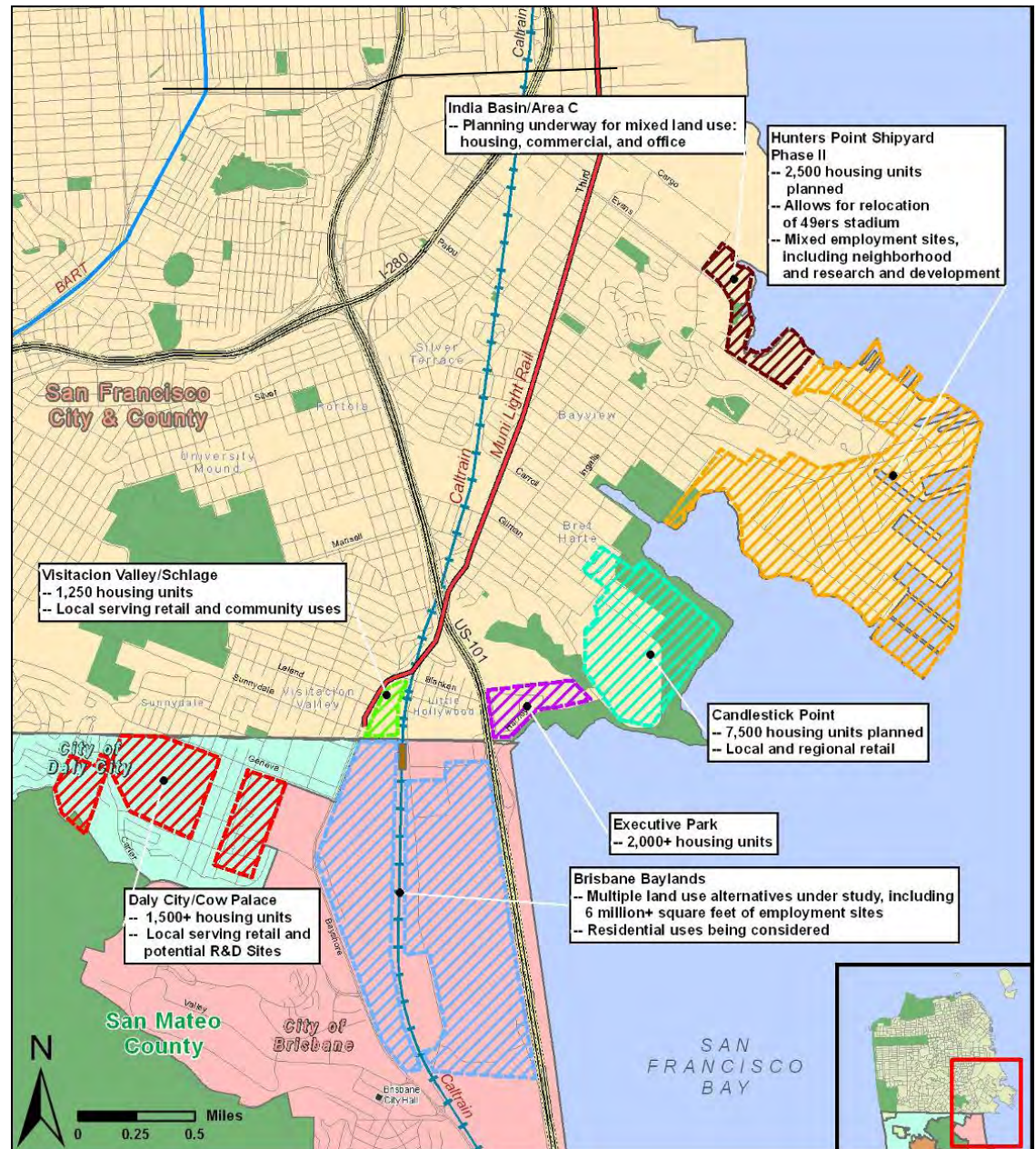
- Look at boards, ask questions, leave comments, take the survey

WRAP-UP

Growth in Southeast San Francisco/San Mateo Counties

Planned/Proposed Development

- + Housing: 18,000 units
- + Employment: 15 million square feet
 - + Retail
 - + Office
 - + R&D
- + Port Intensification



BAYVIEW TRANSPORTATION IMPROVEMENTS



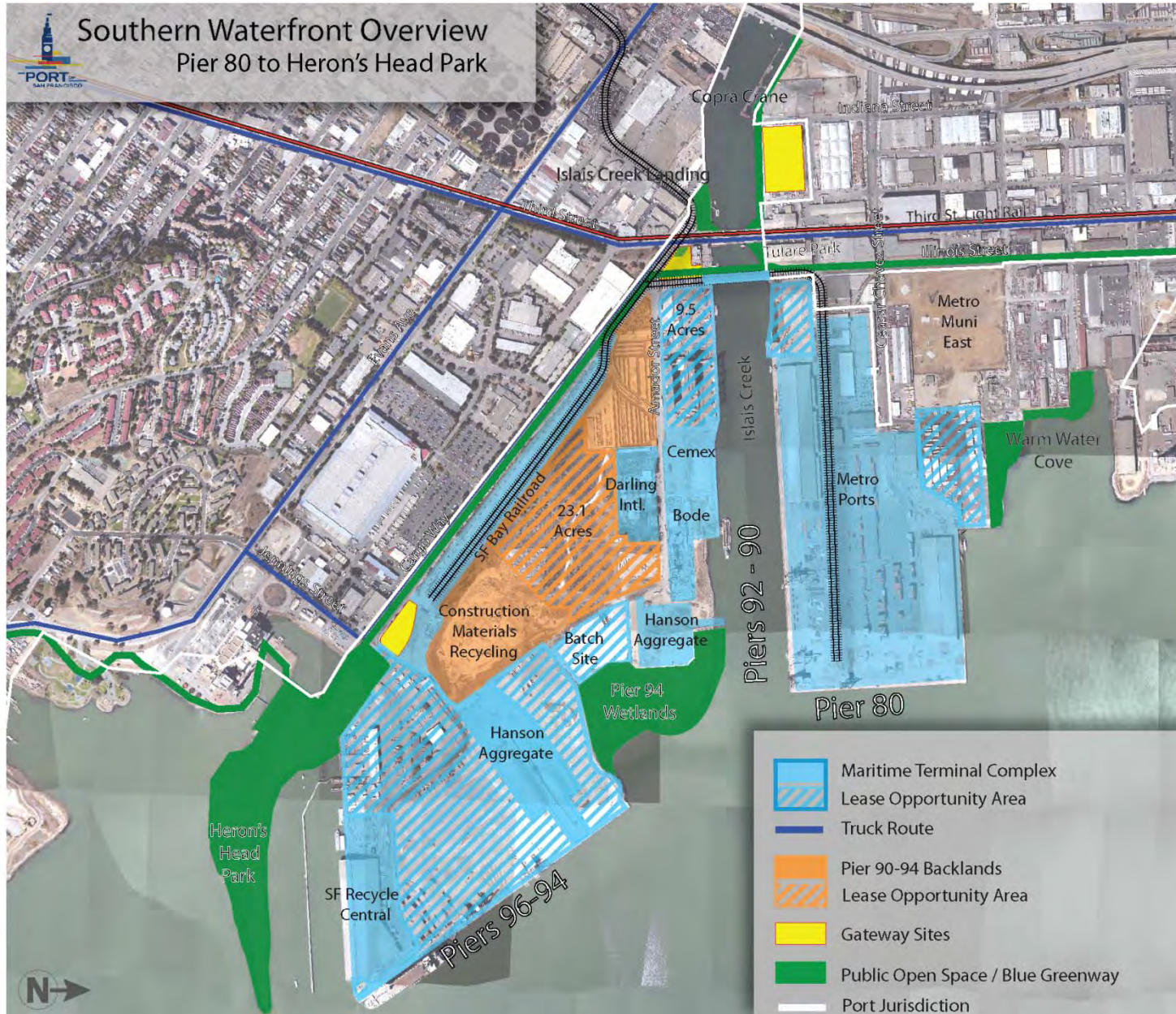
* Yosemite Slough Bridge to be built as part of a separate project funded by the Candlestick/Shipyard Developer.

** BRT west of corridor segment F3 connecting to the Bayshore Station to be built as part of Bi-County Improvements. Line shown will use existing streets in interim.



05/13/2011

Port's Pier 80 – 96 Maritime Cargo Terminals



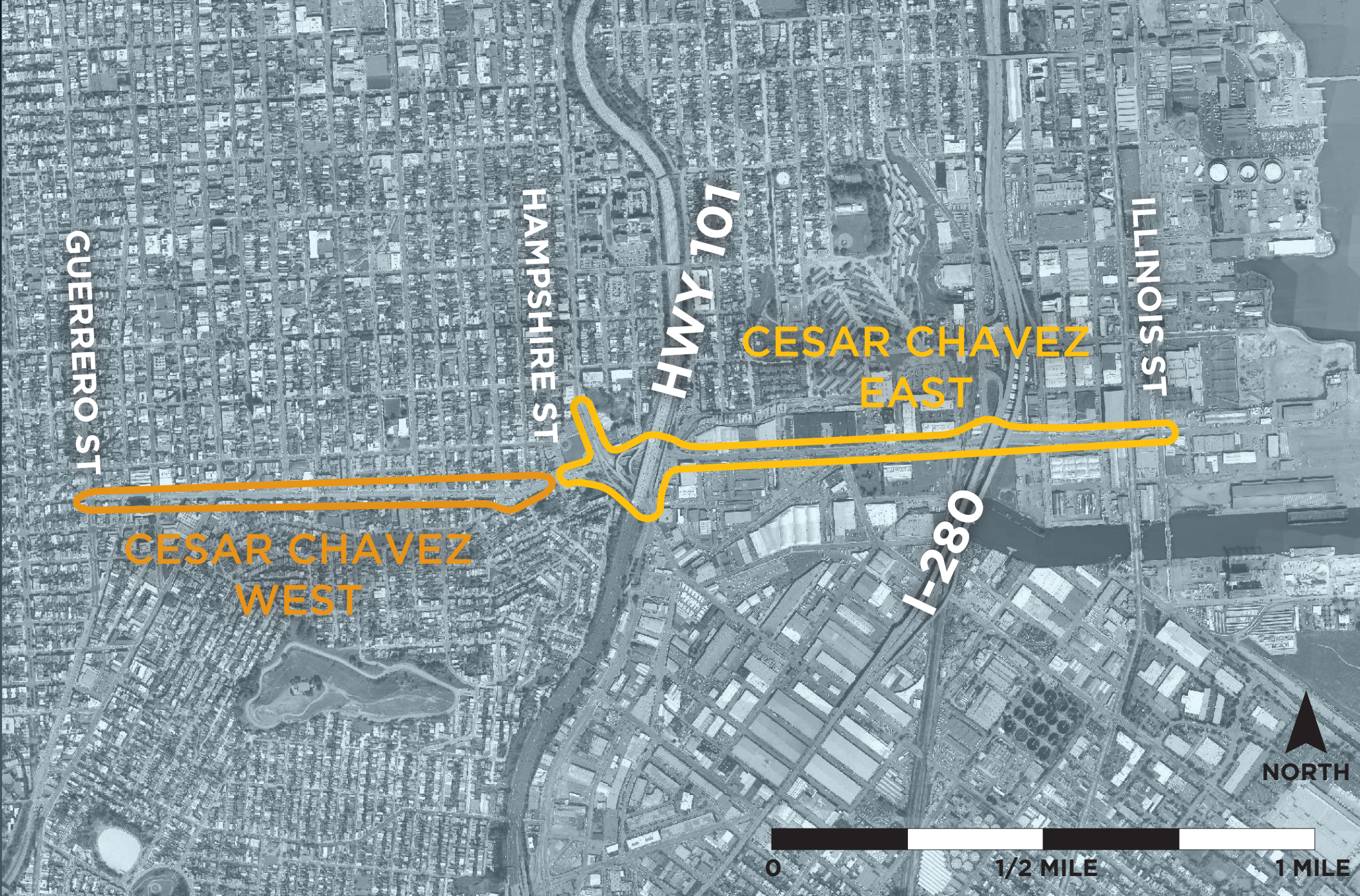
PROJECT OVERVIEW

FUNDED: Caltrans Environmental Justice:
Context Sensitive Planning Grant

MISSION: A **community-based** concept design for the 101 interchange and the East Cesar Chavez corridor that promotes safety, comfort and accessibility to all.

OUTCOMES

- A strong community vision
- A long-term design for streetscape and public space opportunities for Cesar Chavez East street from Hampshire to Illinois Street.
- Alternative concept designs for the 101 interchange (short term, medium term, long term)



Cesar Chavez West and Cesar Chavez East



Cesar Chavez East project area map

CESAR CHAVEZ EAST COMMUNITY DESIGN PLAN

SAN FRANCISCO
PLANNING DEPARTMENT



2009 aerial with historic shoreline, wetlands and creeks

PROJECT TIMELINE

1. DEVELOPING A VISION

- Stakeholder Interviews (on-going)
- Focus groups (on-going)
- Walking Tours (December 2010)
- Workshop 1 (February 10th, 2011)

2. PRELIMINARY DESIGNS Summer 2011

3. FINAL DESIGNS December 2011

4. NEXT STEPS: Look for capital funding to build designs

RETHINKING EAST CESAR CHAVEZ



***We are in the future.
How does the Cesar Chavez East area look now?***

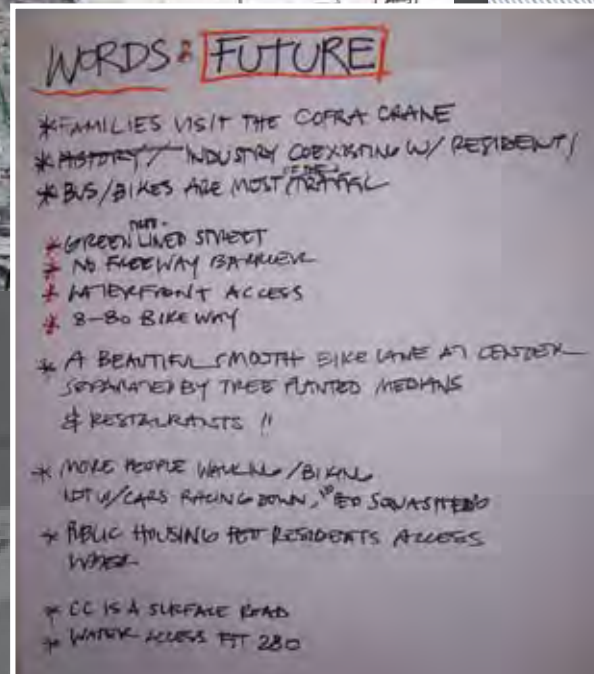


8 Focus groups with local users of the corridor

Surveys: about 70

Workshop 1: about 80 participants

Rethinking Cesar Chavez East / **Your Vision**

[illegible]



1 A **connector**, not a divider, of neighborhoods and communities.

Rethinking Cesar Chavez East / **Your Vision**

CESAR **CHAVEZ EAST** COMMUNITY DESIGN PLAN

SAN FRANCISCO
PLANNING DEPARTMENT



2 A vital part of a thriving industrial zone.

Rethinking Cesar Chavez East / **Your Vision**

CESAR **CHAVEZ EAST** COMMUNITY DESIGN PLAN

SAN FRANCISCO
PLANNING DEPARTMENT



3

Safe and
convenient
for **all modes**
of travel.

Rethinking Cesar Chavez East / **Your Vision**

CESAR **CHAVEZ EAST** COMMUNITY DESIGN PLAN

SAN FRANCISCO
PLANNING DEPARTMENT



4 More green, less gray.

Rethinking Cesar Chavez East / **Your Vision**

CESAR **CHAVEZ EAST** COMMUNITY DESIGN PLAN

SAN FRANCISCO
PLANNING DEPARTMENT



5

A **place** to be in
(not just to go through).

Rethinking Cesar Chavez East / **Your Vision**

CESAR **CHAVEZ EAST** COMMUNITY DESIGN PLAN

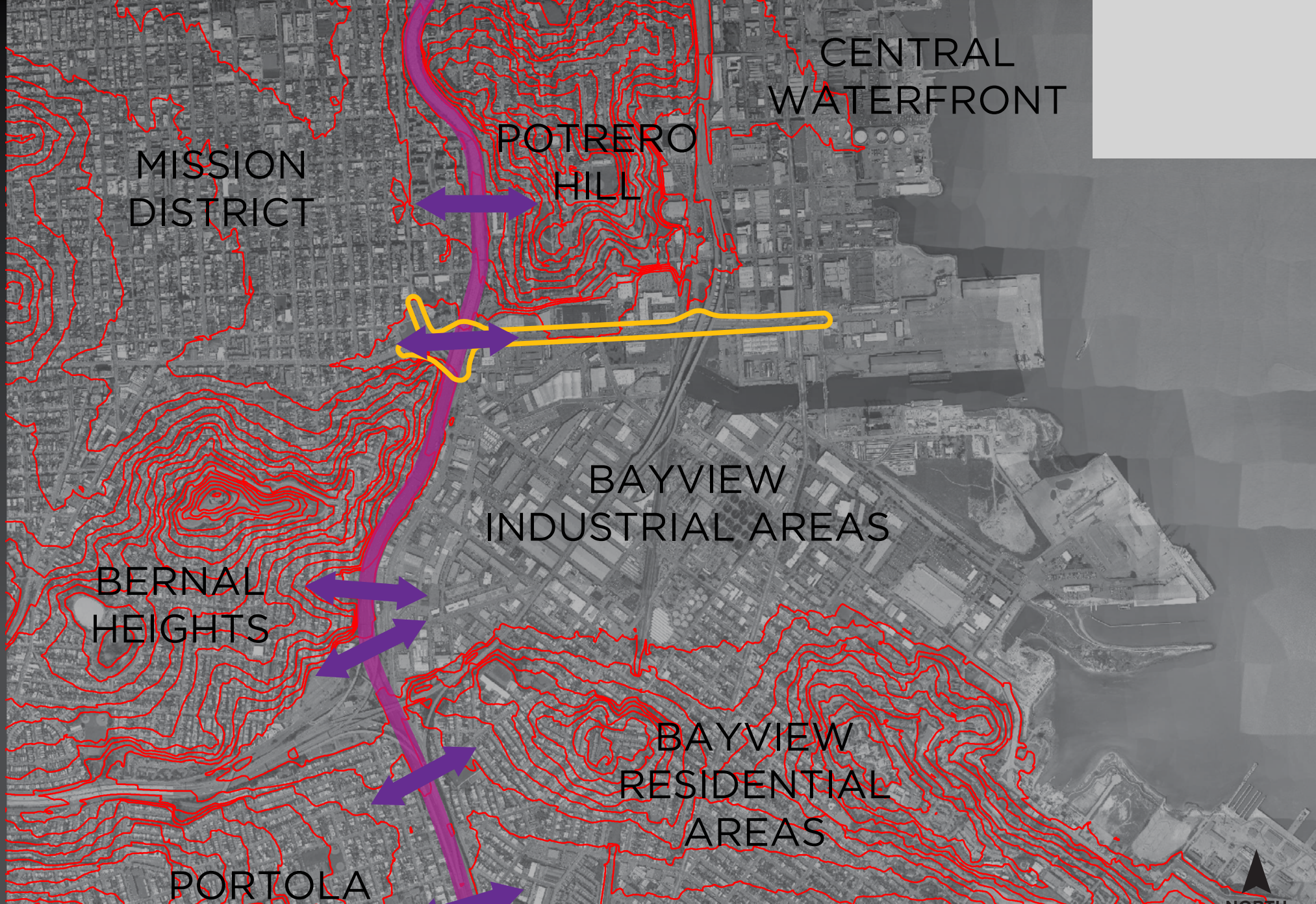
SAN FRANCISCO
PLANNING DEPARTMENT



1

A **connector**, not a divider,
of neighborhoods and
communities.

Rethinking Cesar Chavez East / Your Vision / **Connections**



Rethinking Cesar Chavez East / Your Vision / **Connections**



2

A vital part of a
thriving **industrial** zone.

Rethinking Cesar Chavez East / Your Vision / **Industrial**



Rethinking Cesar Chavez East / Your Vision / **Industrial**

CESAR **CHAVEZ EAST** COMMUNITY DESIGN PLAN

SAN FRANCISCO
PLANNING DEPARTMENT



Rethinking Cesar Chavez East / Your Vision / **Industrial**

WHAT WE HEARD FROM:
**TRUCKERS / PORT /
HUNTERS POINT SHIPYARD PROJECT**



Rethinking Cesar Chavez East / Your Vision / **Industrial**



3

Safe and convenient
for **all modes** of travel.

Rethinking Cesar Chavez East / Your Vision / **All Modes**

WHAT WE HEARD FROM: **PEDESTRIANS**

“Construct or widen sidewalks along both sides of Cesar Chavez...”



Rethinking Cesar Chavez East / Your Vision / **Pedestrians**



Rethinking Cesar Chavez East / Your Vision / **Pedestrians**

WHAT WE HEARD FROM: **PEDESTRIANS**



**WESTBOUND
SIDEWALK**



**EASTBOUND
SIDEWALK**

Rethinking Cesar Chavez East / Your Vision / **Pedestrians**

WHAT WE HEARD FROM: **PEDESTRIANS**

“Improve crosswalks...”

“Less waiting for pedestrian signal at freeway...”

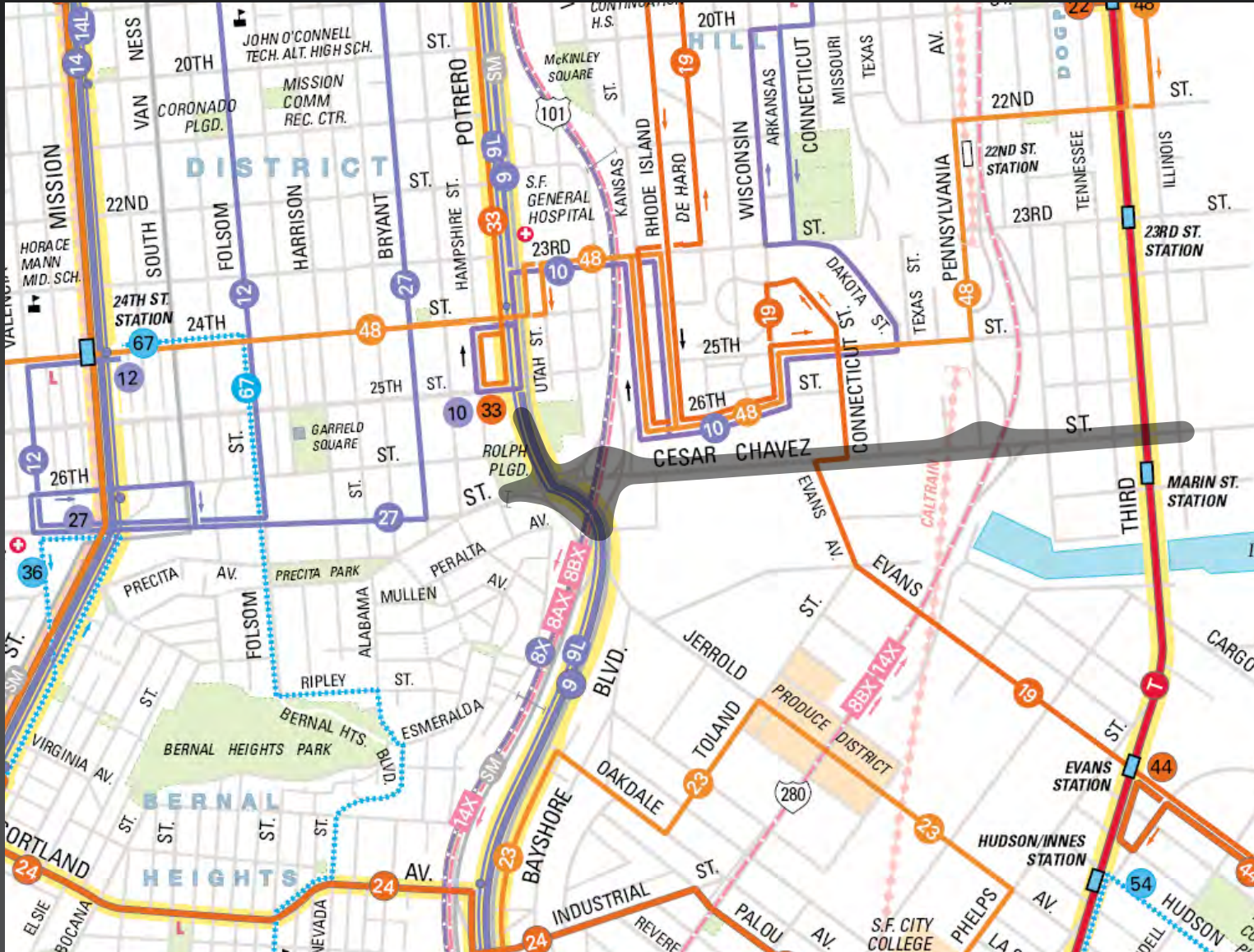


to be reviewed

Rethinking Cesar Chavez East / Your Vision / **Pedestrians**

Transit:

CONSIDER A WEST/ EAST MUNI CONNECTION ALONG CHAVEZ

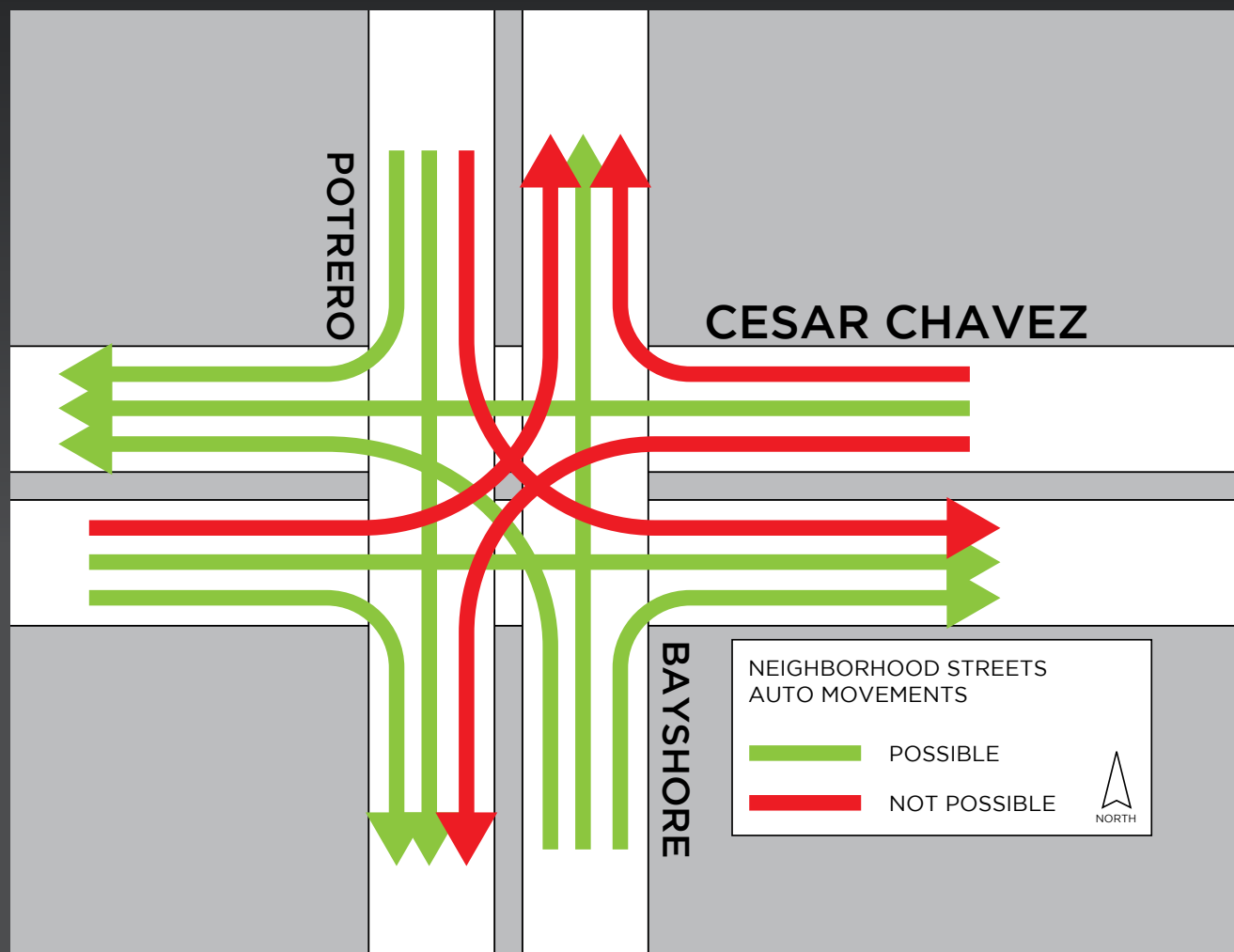


“Improve public transit routes along Cesar Chavez corridor...”

Rethinking Cesar Chavez East / Your Vision / **Transit**

WHAT WE HEARD FROM: DRIVERS

“...Clean up/untangle freeway interchange...”



Rethinking Cesar Chavez East / Your Vision / **Drivers**

WHAT WE HEARD FROM: **DRIVERS**

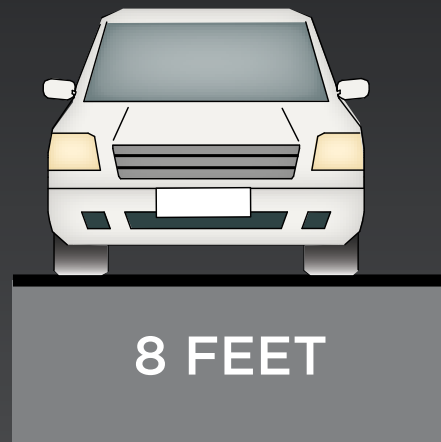
“...Fix car connectivity to reduce pedestrian/bike conflicts...”

“...Vehicle safety signs for all...”



Rethinking Cesar Chavez East / Your Vision / **Drivers**

WHAT WE HEARD FROM: DRIVERS/WORKERS



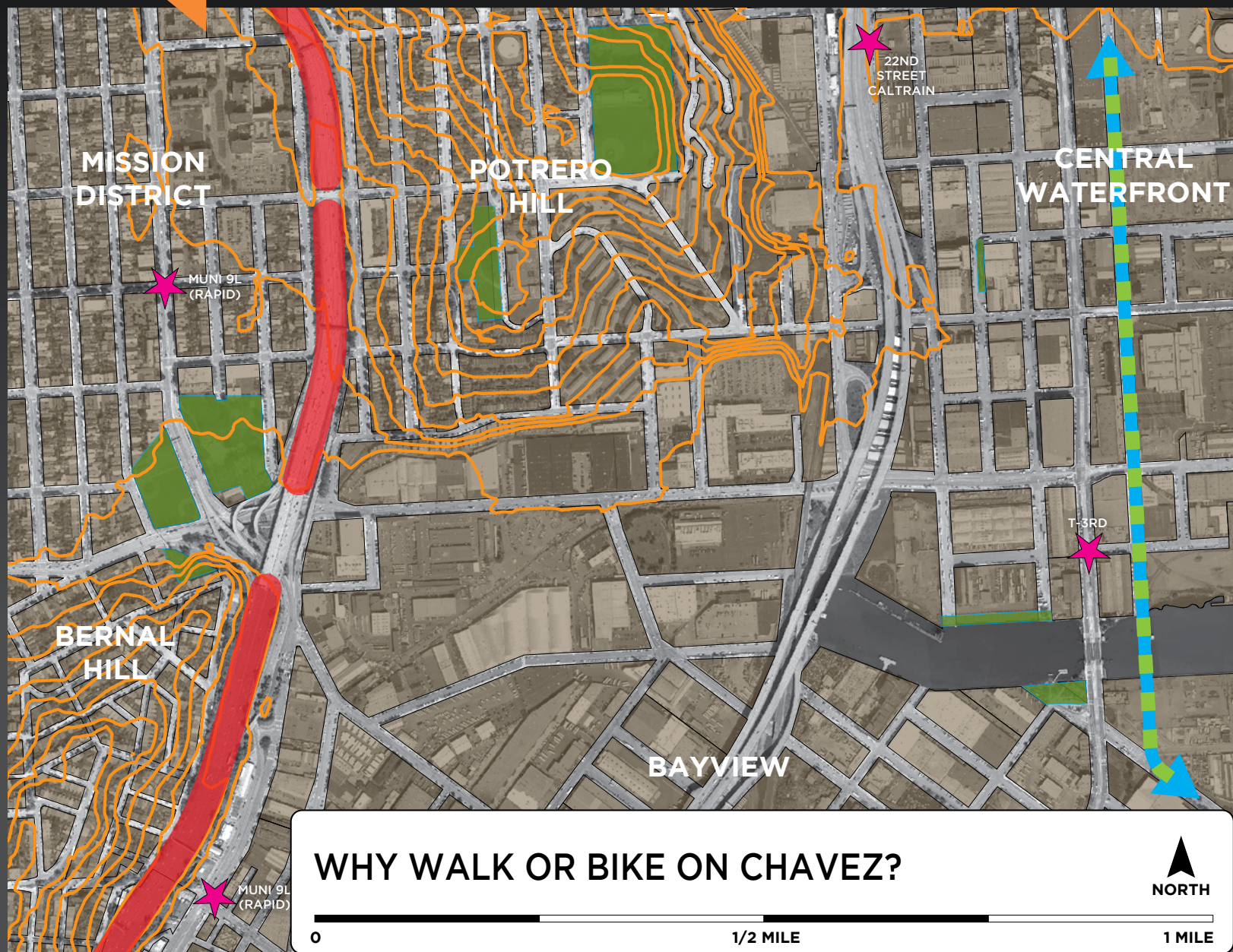
**NORTH SIDE
PARKING**



**SOUTH SIDE
PARKING**

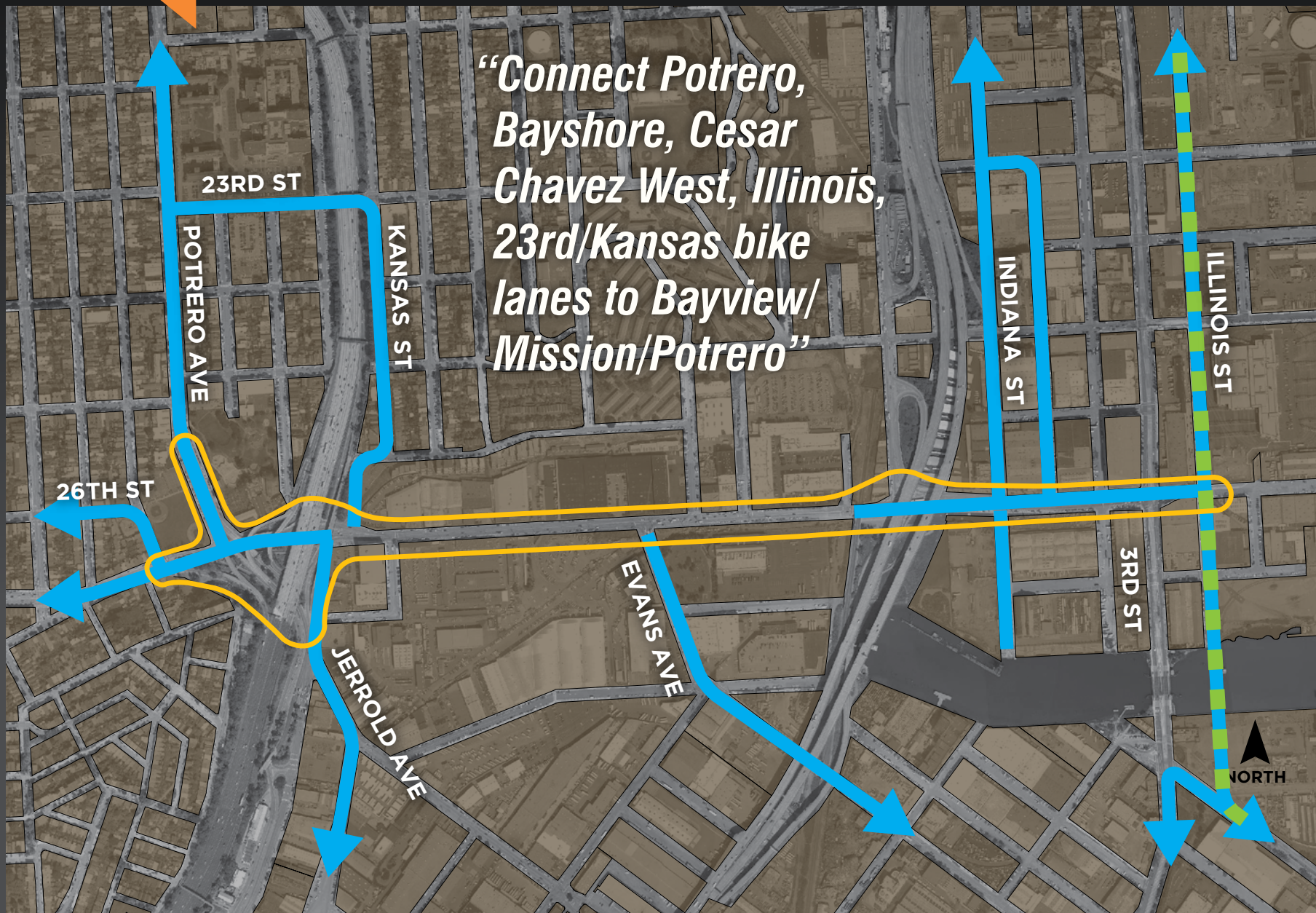
Rethinking Cesar Chavez East / Your Vision / **Drivers**

WHAT WE HEARD FROM: BICYCLISTS



Rethinking Cesar Chavez East / Your Vision / **Bicyclists**

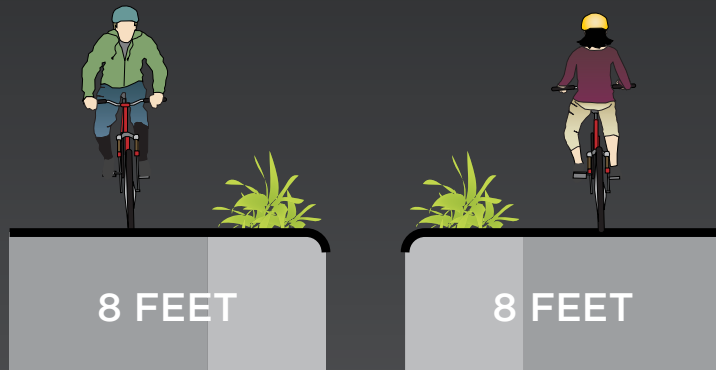
WHAT WE HEARD FROM: BICYCLISTS



Rethinking Cesar Chavez East / Your Vision / **Bicyclists**

WHAT WE HEARD FROM: BICYCLISTS

*“Safe access for pedestrians and bikes
all along Cesar Chavez...”*



**PROTECTED
BIKE LANES**

OR

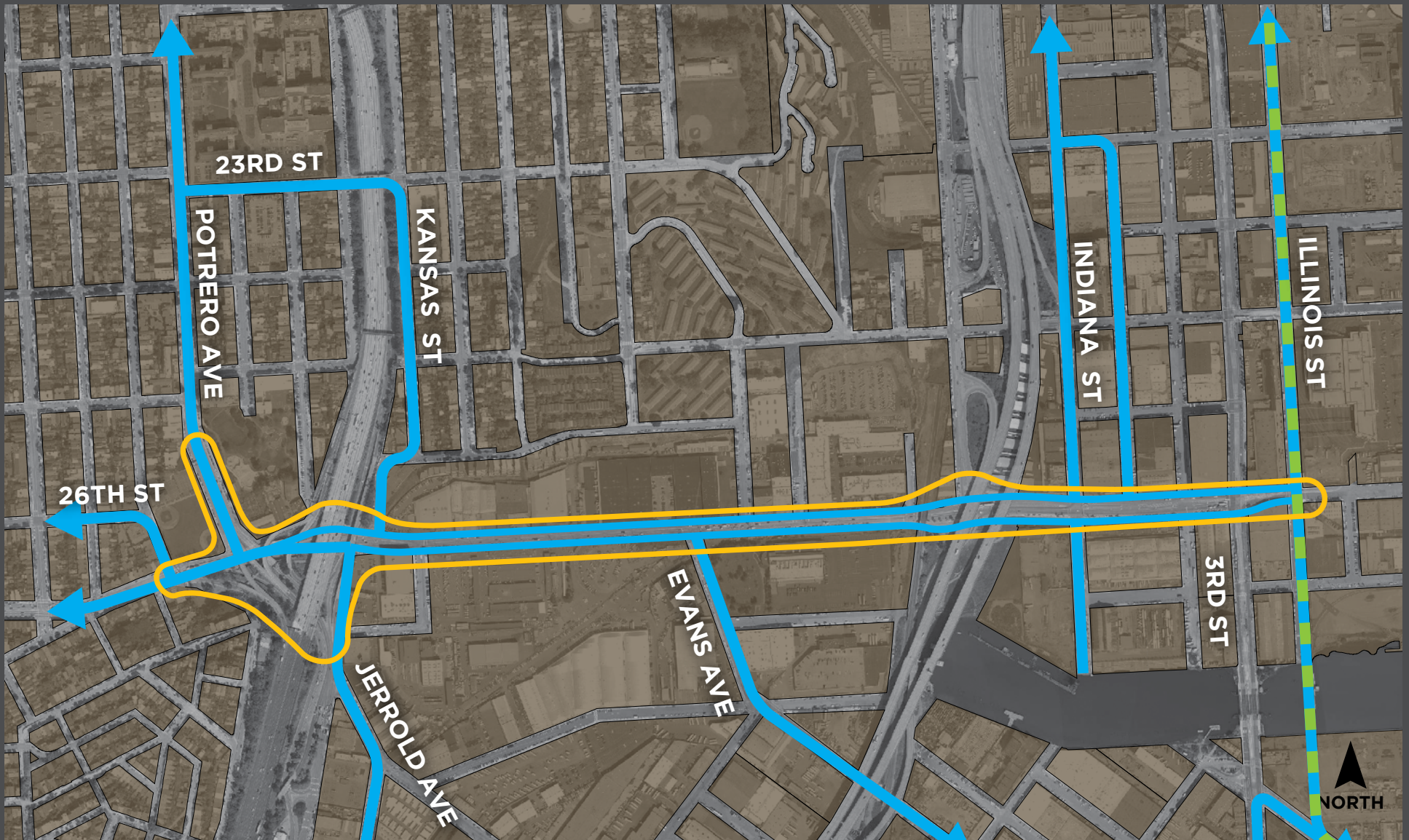


**TWO-WAY
CYCLE TRACK**

Rethinking Cesar Chavez East / Your Vision / **Bicyclists**

Bikes Long Term:

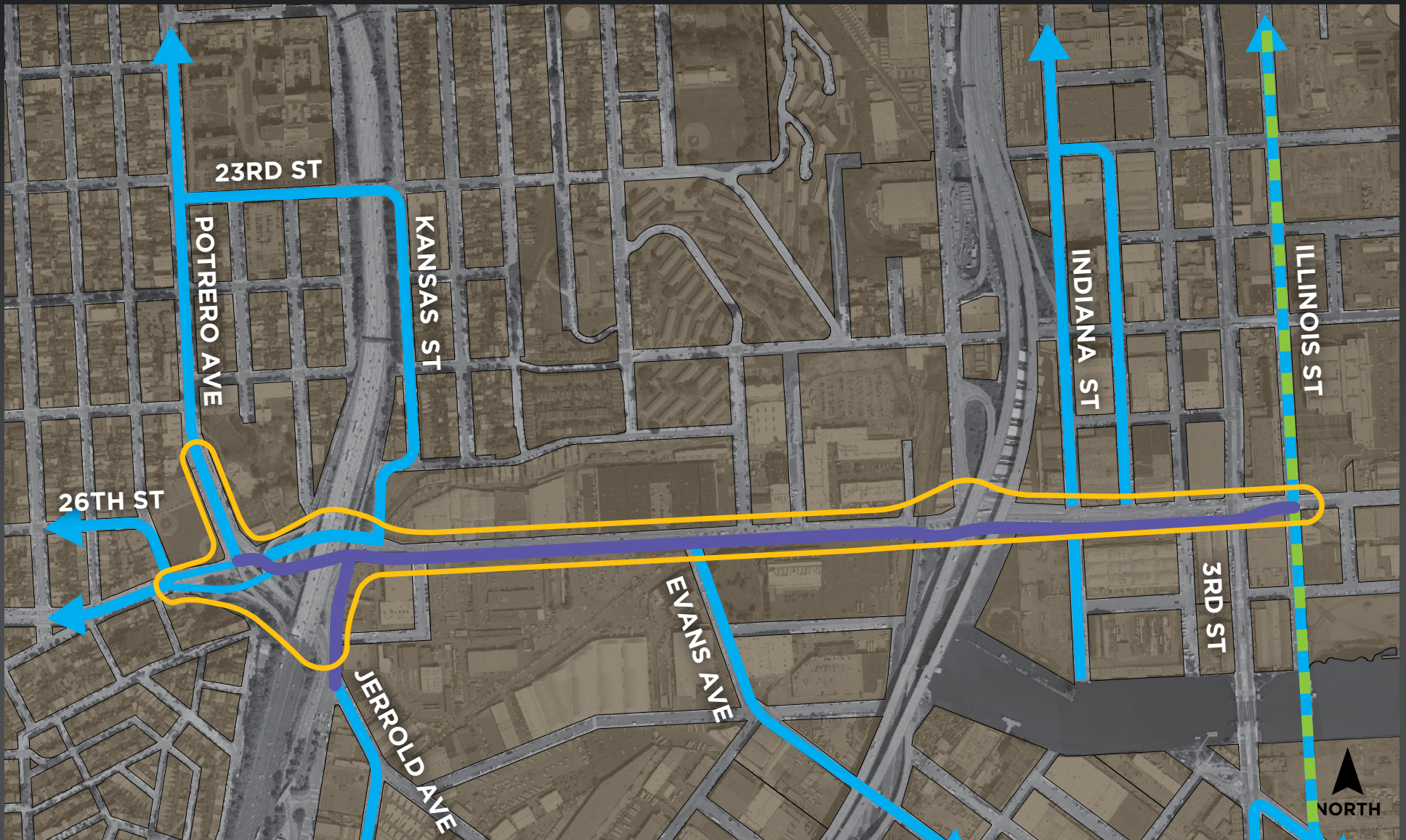
1. PROTECTED BICYCLE LANES



Rethinking Cesar Chavez East / Your Vision / **Bikes Long Term**

Bikes Long Term:

2. TWO-WAY CYCLE TRACK



Rethinking Cesar Chavez East / Your Vision / **Bikes / Long Term**



4 More **green**, less gray.

Rethinking Cesar Chavez East / Your Vision / **Green**



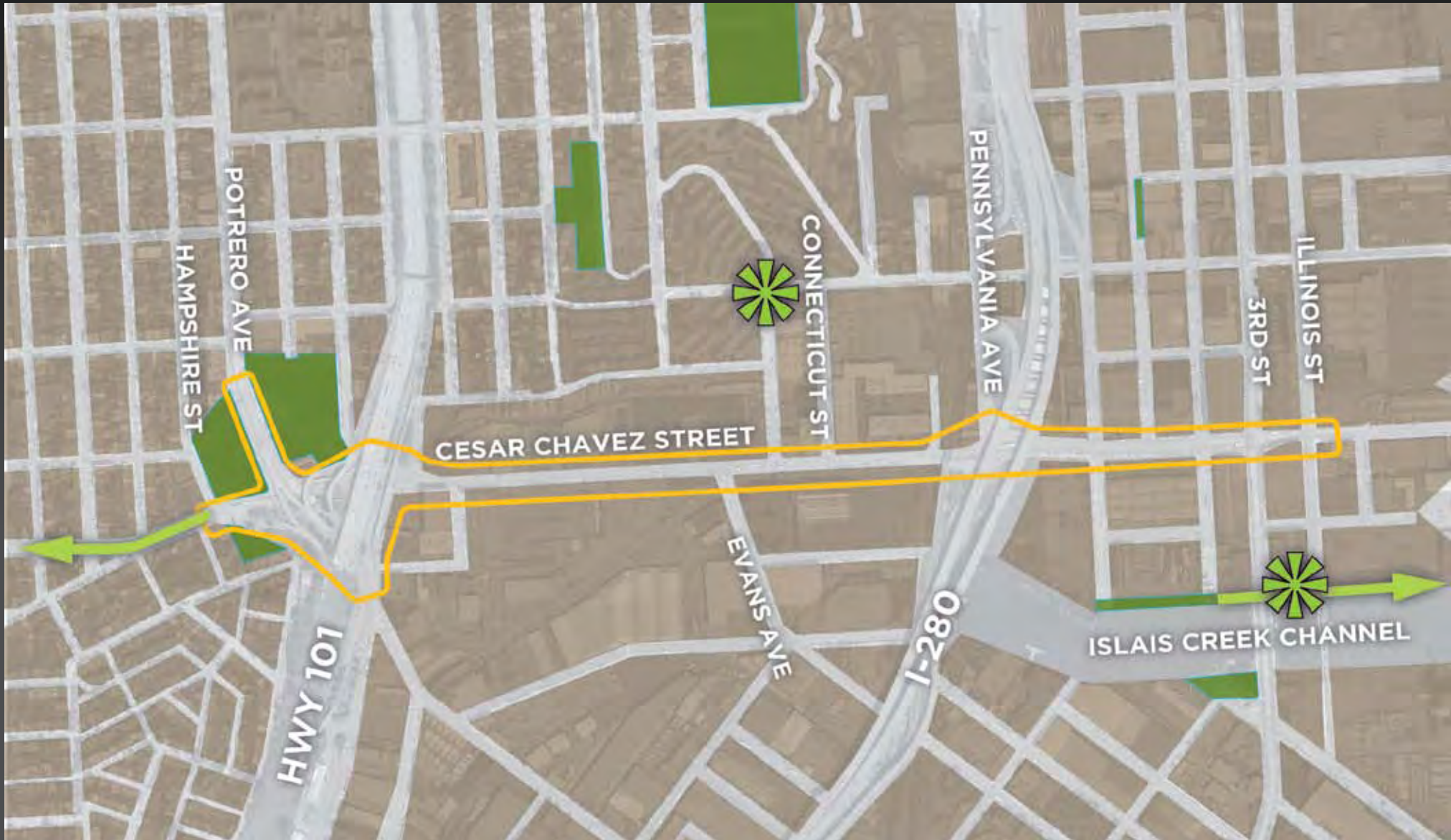
Rethinking Cesar Chavez East / Your Vision / **Green**

CESAR **CHAVEZ EAST** COMMUNITY DESIGN PLAN

SAN FRANCISCO
PLANNING DEPARTMENT

A System of Green Connections

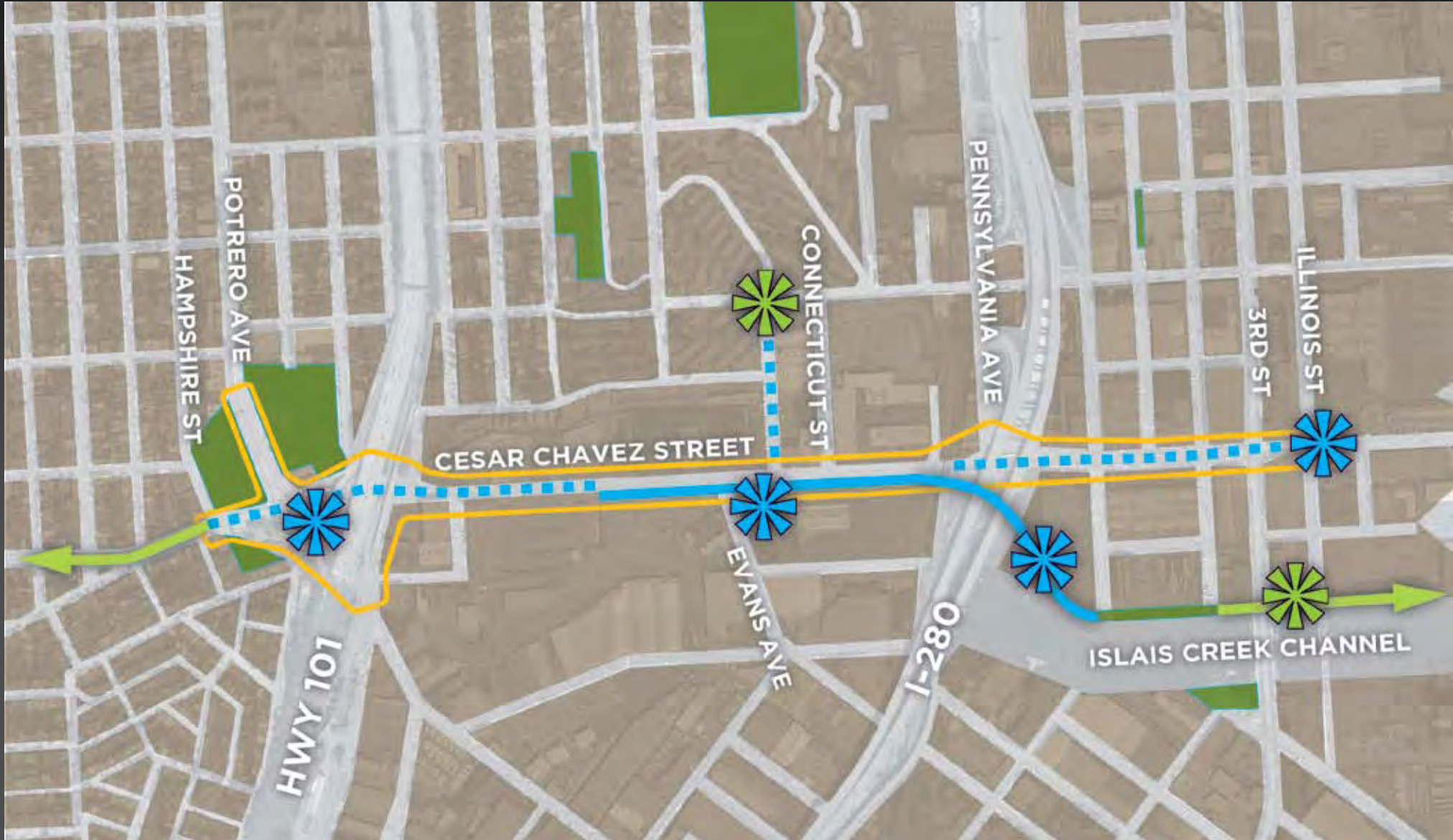
EXISTING OPEN SPACES



Rethinking Cesar Chavez East / Your Vision / **Green**

A System of Green Connections

PROPOSED OPEN SPACES



Rethinking Cesar Chavez East / Your Vision / **Green**

A System of Green Connections

PROPOSED OPEN SPACES



Rethinking Cesar Chavez East / Your Vision / **Green**

The background image shows a large, modern building with a dark roof and multiple windows. In front of the building is a fenced-in outdoor area. A bicycle is leaning against a concrete wall on the left. In the foreground, there is a white metal bench with curved armrests. The ground is paved with bricks. The overall scene is in grayscale, with the text overlaid in white and orange.

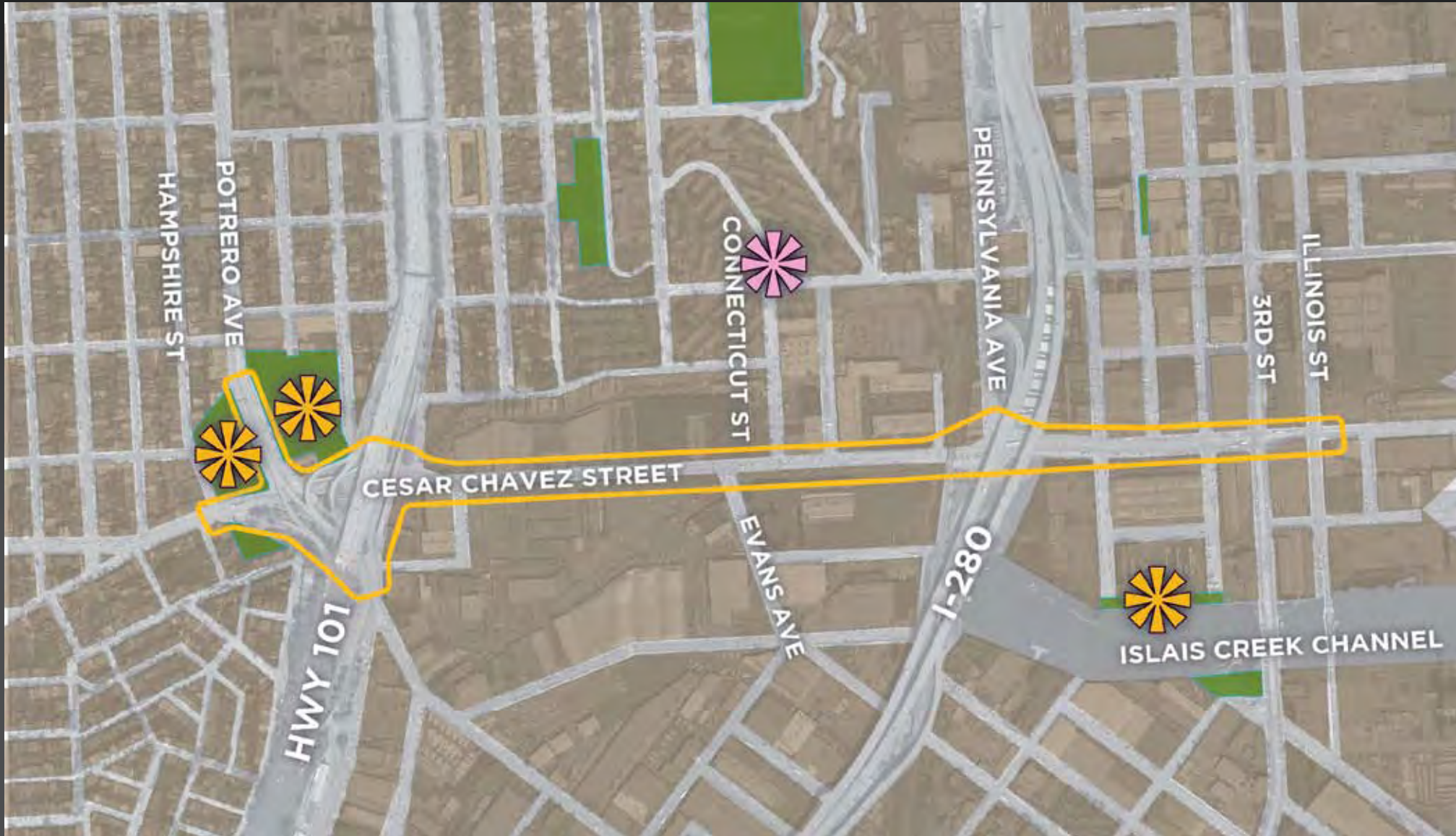
5

A place **to be in**
(not just to go through).

Rethinking Cesar Chavez East / Your Vision / **Place**

New Public Spaces to Gather

EXISTING PUBLIC SPACES



Rethinking Cesar Chavez East / Your Vision / **Place**

New Public Spaces to Gather

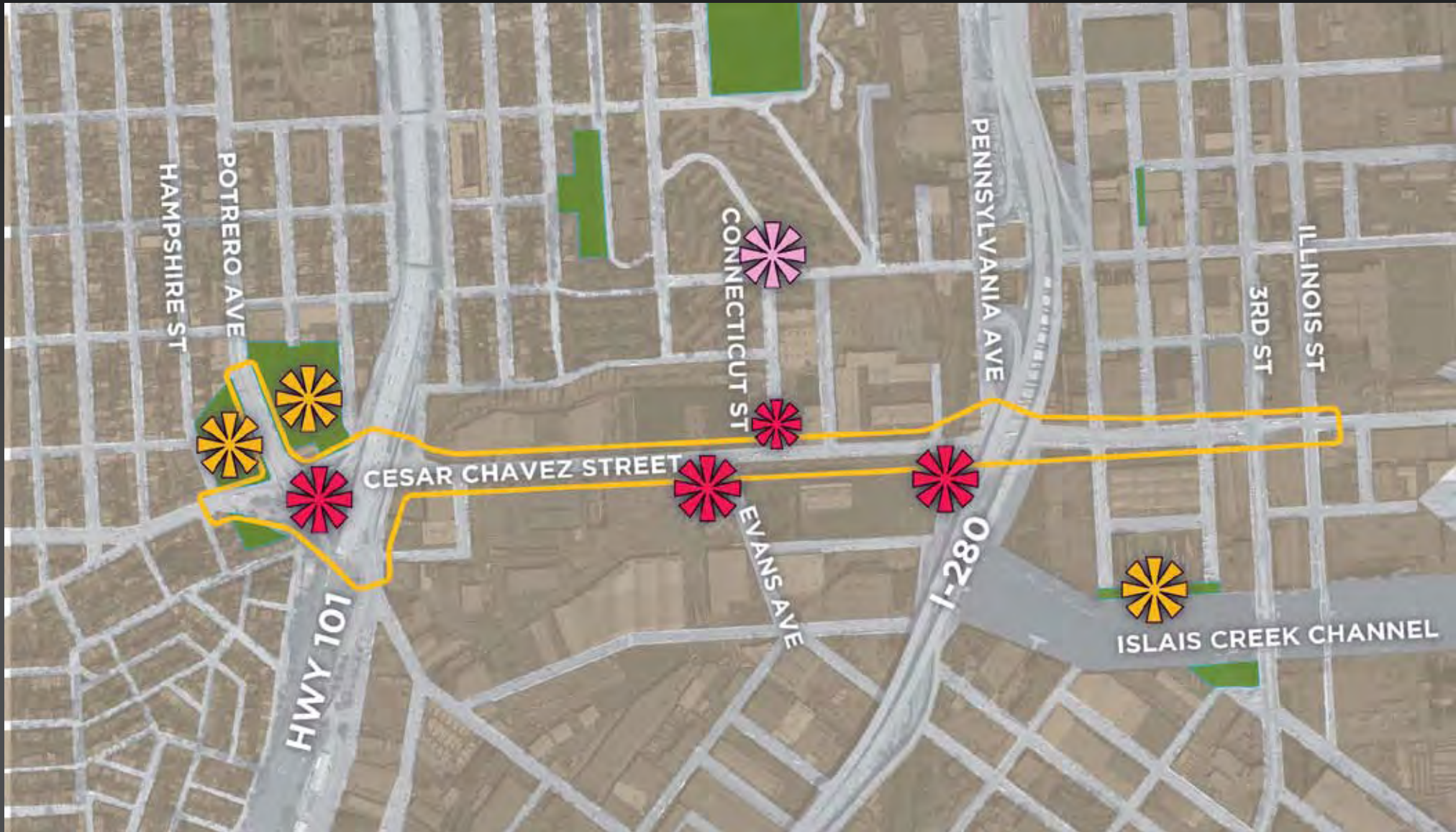
EXISTING PUBLIC SPACES



Rethinking Cesar Chavez East / Your Vision / **Place**

New Public Spaces to Gather

PROPOSED PUBLIC SPACES



Rethinking Cesar Chavez East / Your Vision / **Place**

New Public Spaces to Gather

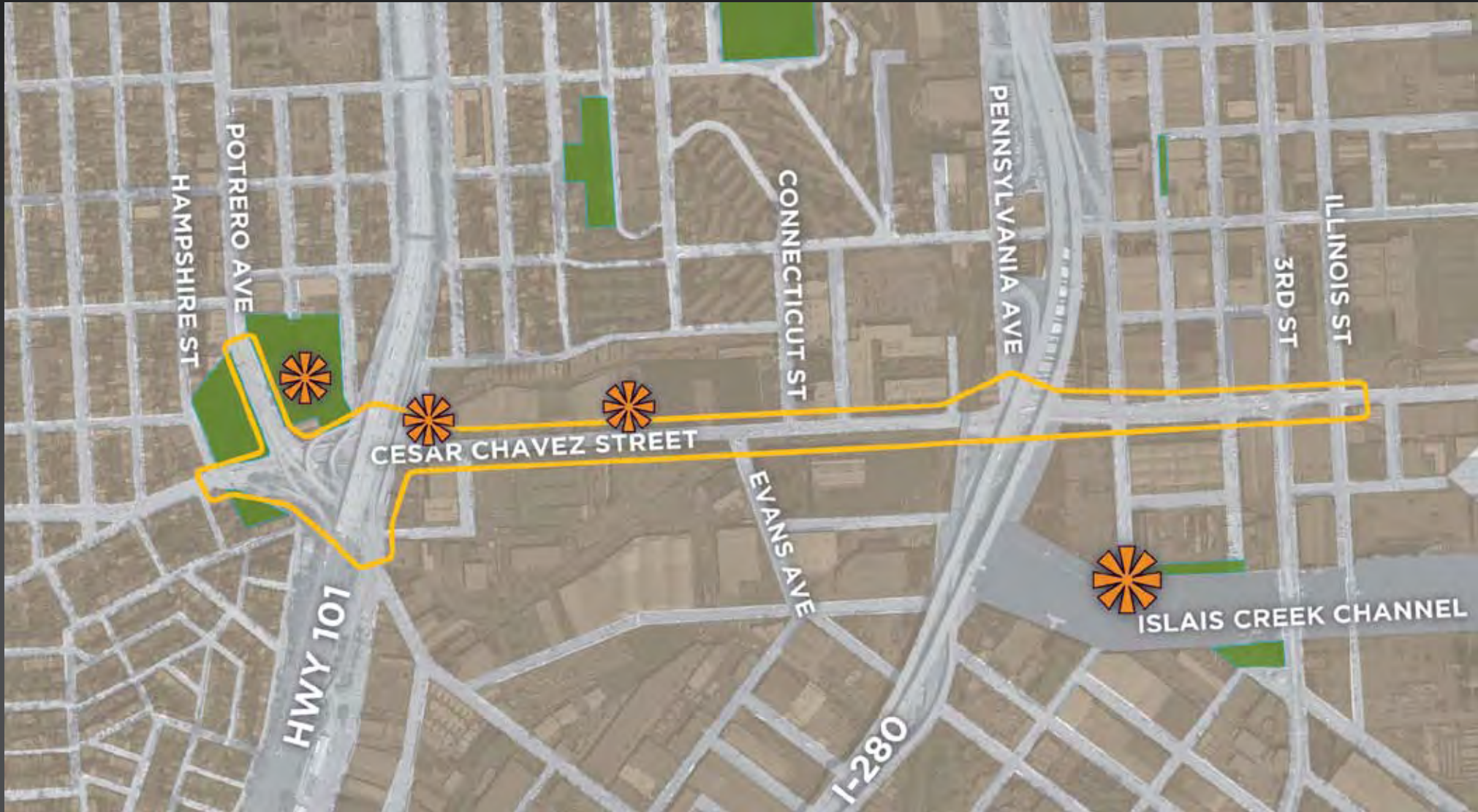
PROPOSED PUBLIC SPACES



Rethinking Cesar Chavez East / Your Vision / **Place**

Art, Culture and History

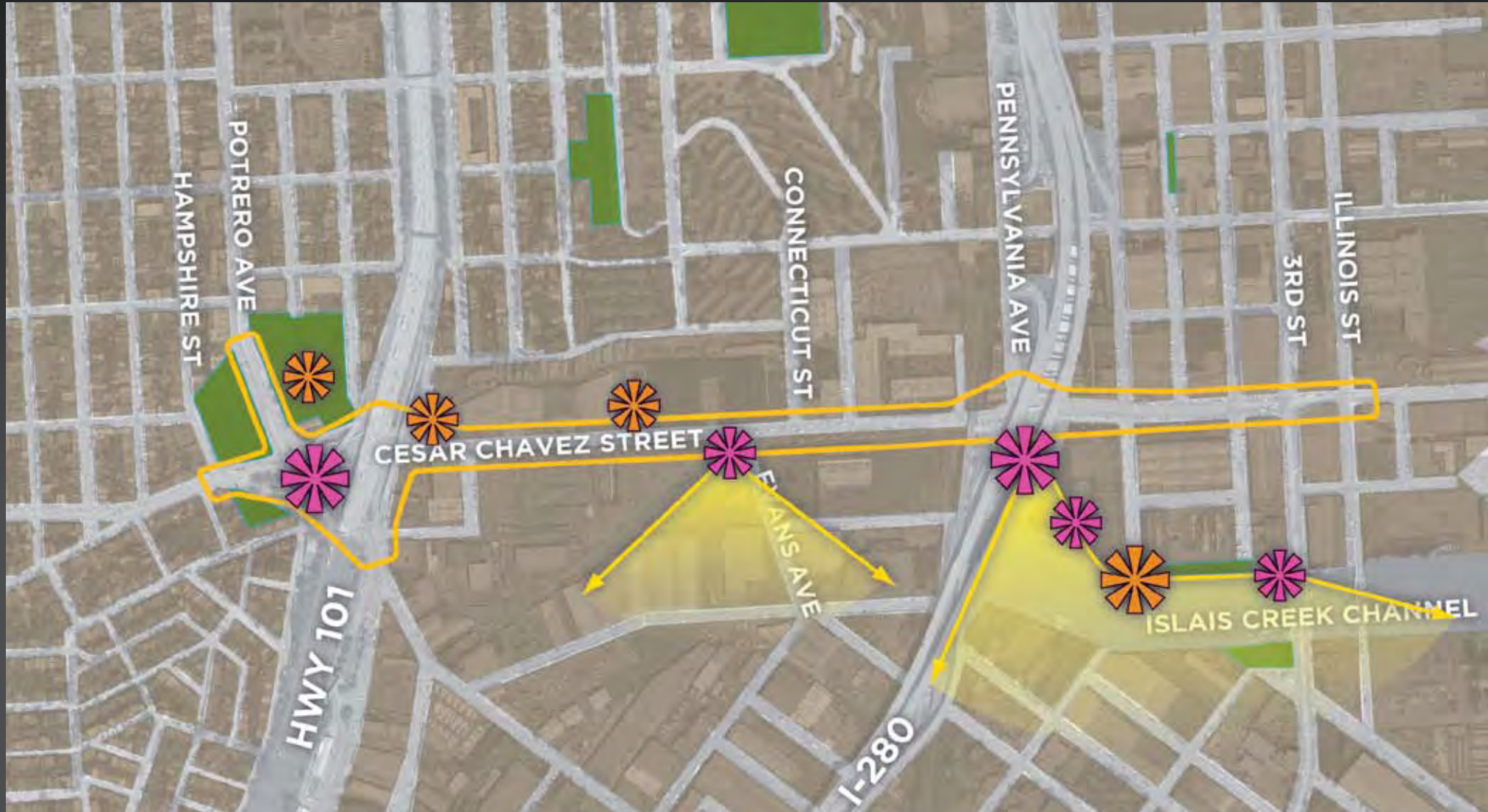
EXISTING



Rethinking Cesar Chavez East / Your Vision / **Place**

Art, Culture and History

PROPOSED INTERPRETIVE NETWORK



Rethinking Cesar Chavez East / Your Vision / **Place**

Art, Culture and History

PROPOSED INTERPRETIVE NETWORK



Rethinking Cesar Chavez East / Your Vision / **Place**

SHORT TERM IMPROVEMENTS

1. BAYSHORE / POTRERO / CHAVEZ INTERSECTION
2. SFMTA BICYCLE PROJECT

Rethinking Cesar Chavez East / **Short-Term Improvements**



Cesar Chavez East project area map

CESAR CHAVEZ EAST COMMUNITY DESIGN PLAN

SAN FRANCISCO
PLANNING DEPARTMENT

Short Term Improvements

1. BAYSHORE / POTRERO / CHAVEZ INTERSECTION



Rethinking Cesar Chavez East / Short-Term... / **Bayshore-Potrero-Chavez**



POTRERO

CESAR CHAVEZ

BAYSHORE

PRE-101:
GOOD CONNECTIVITY

Rethinking Cesar Chavez East / Short-Term... / **Bayshore-Potrero-Chavez**



1948 Aerial



1964 Aerial



2009 Aerial

Rethinking Cesar Chavez East / Short-Term... / **Bayshore-Potrero-Chavez**



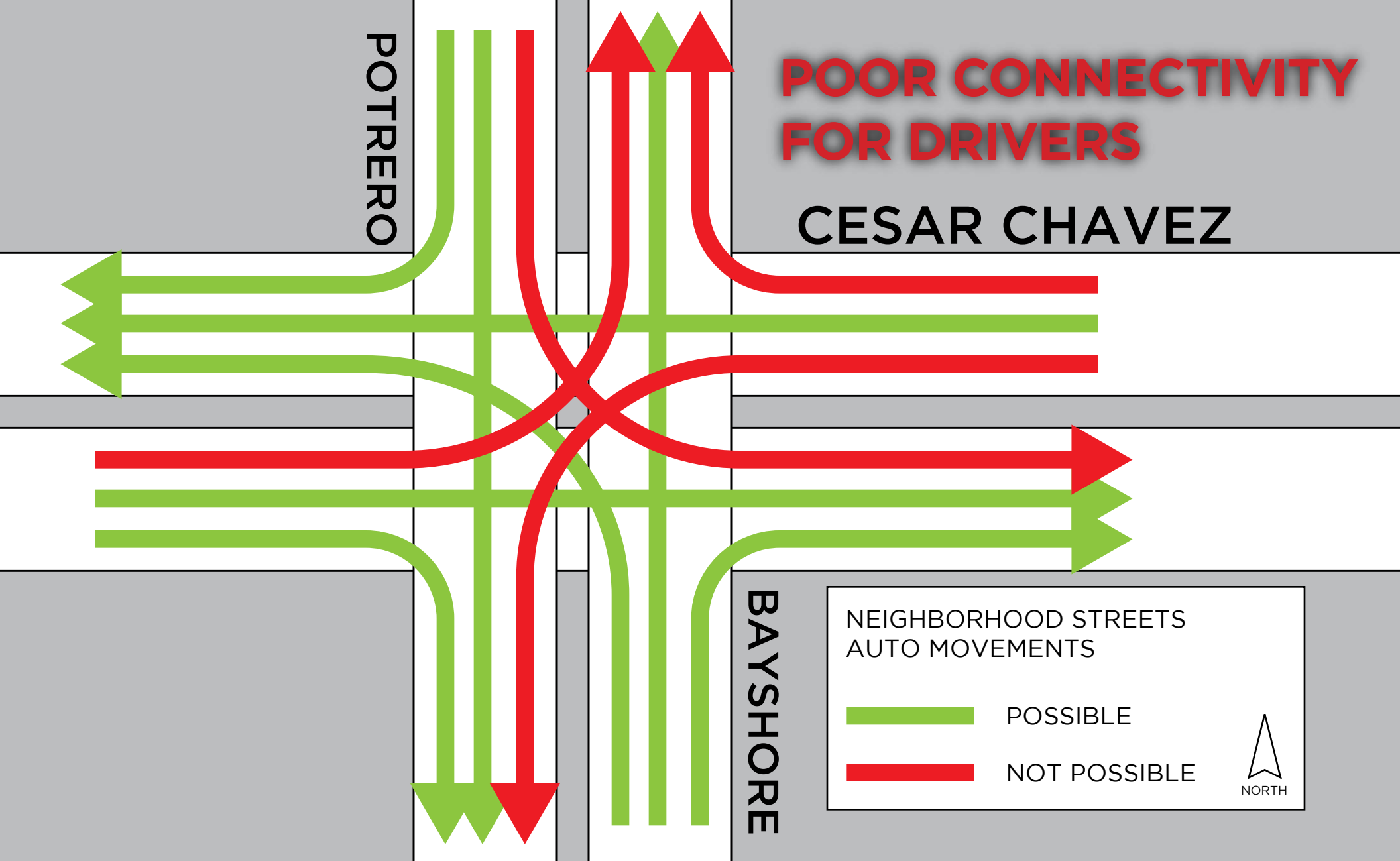
POTRERO

CESAR CHAVEZ

TODAY:
POOR CONNECTIVITY

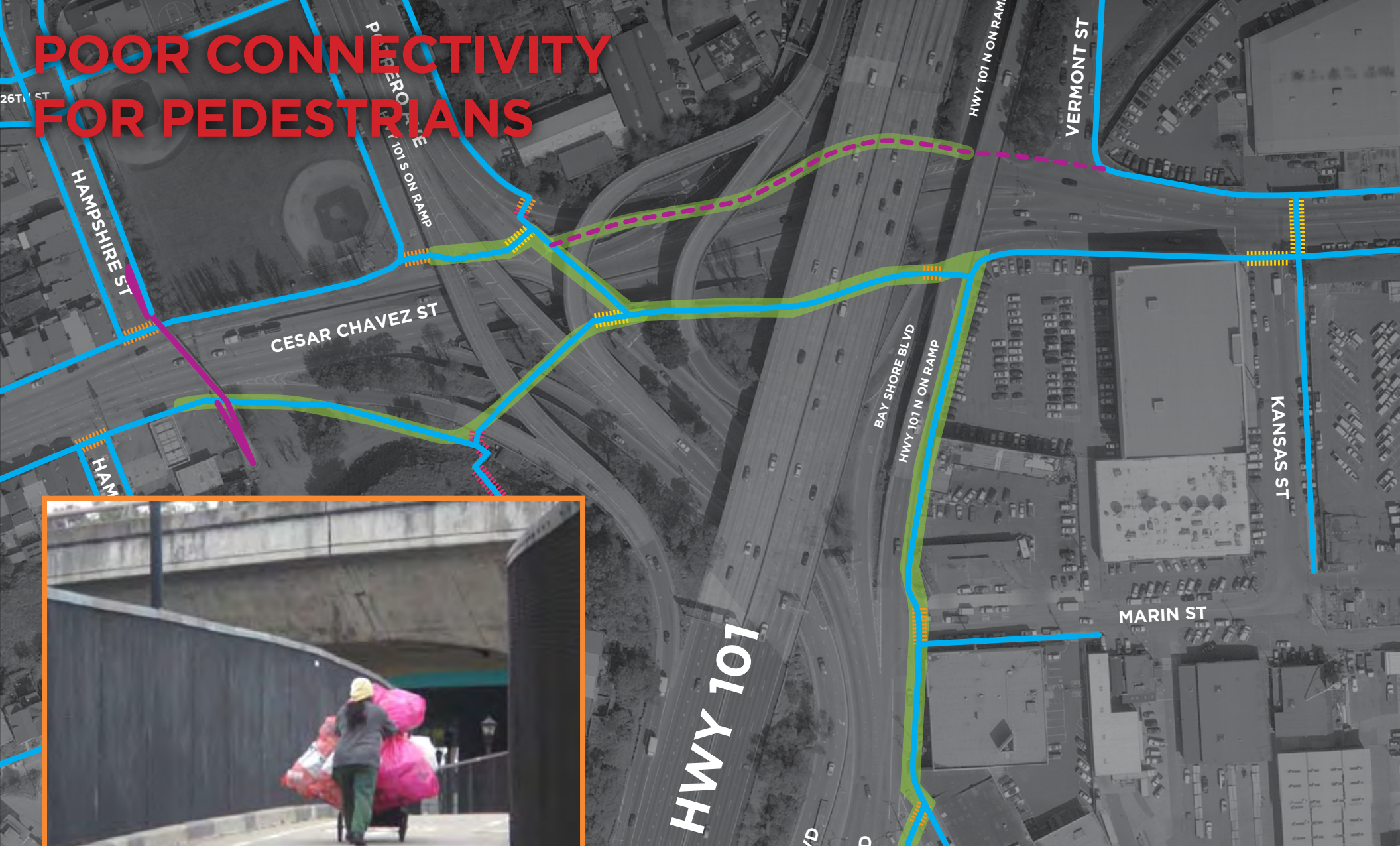
BAYSHORE

Rethinking Cesar Chavez East / Short-Term... / **Bayshore-Potrero-Chavez**



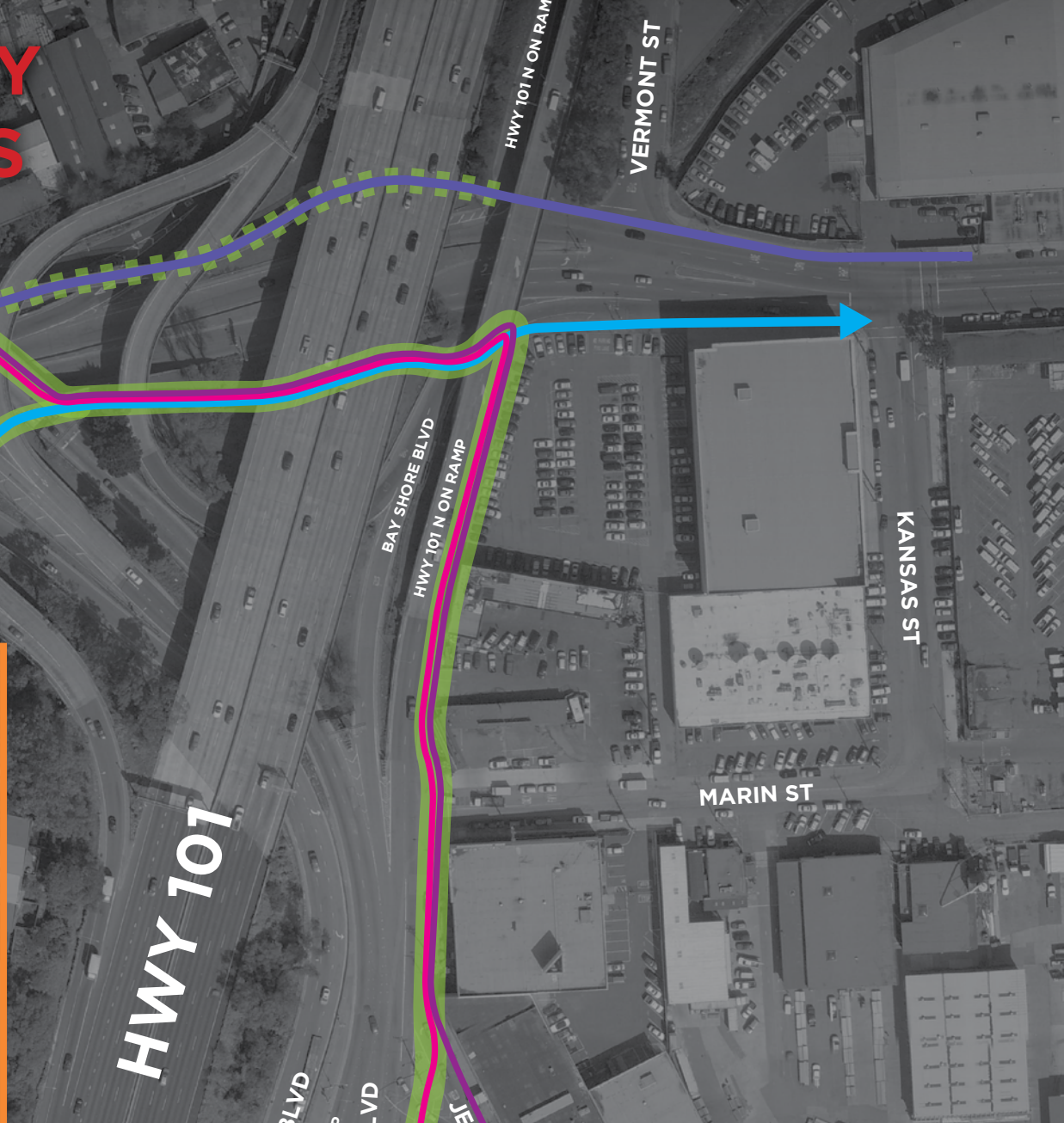
Rethinking Cesar Chavez East / Short-Term... / **Bayshore-Potrero-Chavez**

POOR CONNECTIVITY FOR PEDESTRIANS



Rethinking Cesar Chavez East / Short-Term... / **Bayshore-Potrero-Chavez**

POOR CONNECTIVITY FOR BICYCLE RIDERS



Rethinking Cesar Chavez East / Short-Term... / **Bayshore-Potrero-Chavez**

WHAT CAN WE IMPROVE IN THE NEAR TERM?



Rethinking Cesar Chavez East / Short-Term... / **Bayshore-Potrero-Chavez**



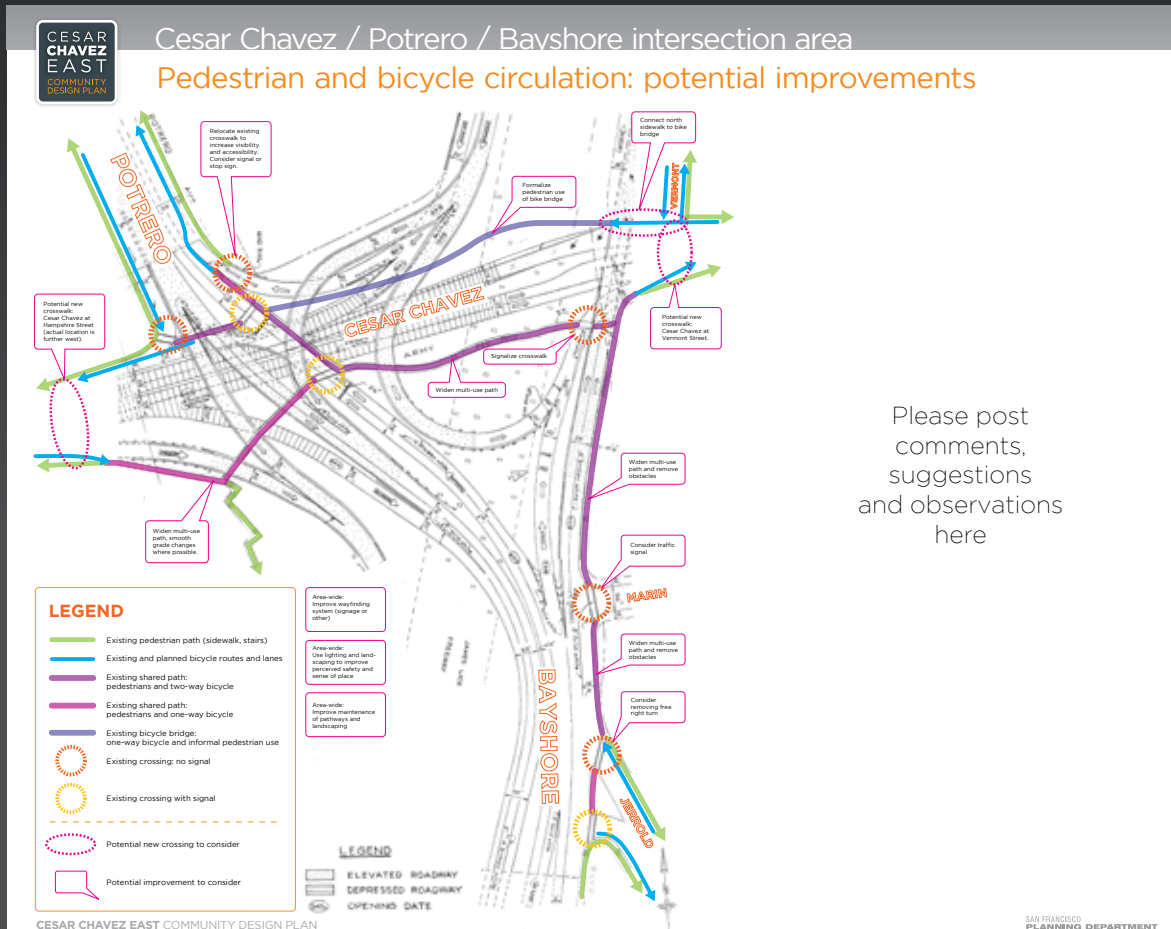
Rethinking Cesar Chavez East / Short-Term... / **Bayshore-Potrero-Chavez**



Rethinking Cesar Chavez East / Short-Term Improvements / **Bayshore-Potrero-Chavez**

CHAVEZ/POTRERO/BAYSHORE INTERSECTION

PLEASE LOOK AT THE BOARDS, POST COMMENTS, AND TAKE THE SURVEY!



Please post
comments,
suggestions
and observations
here

CESAR CHAVEZ EAST COMMUNITY DESIGN PLAN

Cesar Chavez East
Community Design Plan

Questions? Contact: Barla Salvadori, SF Planning
415.575.9088
barla.salvadori@sfgov.org

Cesar Chavez/Potrero/Bayshore Intersection Area User Survey

6/27/11

Community Meeting #2

1. How often do you travel through the Cesar Chavez / Potrero / Bayshore intersection area?
☐ 1 day per week ☐ 2 days per week ☐ 3 days per week ☐ 4 days per week ☐ 5+ days per week

2. At what time(s) of the day do you most often travel through the Cesar Chavez / Potrero / Bayshore intersection area?
 (please mark all that apply) ☐ Dusk ☐ Morning ☐ Afternoon ☐ Evening ☐ Night

3. What mode of transport do you typically use when traveling through the Cesar Chavez / Potrero / Bayshore intersection area?
☐ Motor Vehicle ☐ Walk ☐ Run or Jog ☐ Bicycle ☐ Skateboard
☐ Assisted Mobility Device (e.g. wheelchair, 'scooter', walker, etc.) ☐ Other: _____

4. Why do you travel through the Cesar Chavez / Potrero / Bayshore intersection area most?
☐ Work ☐ School ☐ Shopping ☐ Medical ☐ Leisure ☐ Travel Through ☐ Other: _____

Please use the map provided on the other side of this paper to outline your typical trip through the Cesar Chavez / Potrero / Bayshore intersection area.

6. Briefly describe your experience navigating the Cesar Chavez / Potrero / Bayshore intersection area:

7. At any point do you feel unsafe or experience difficulty while navigating the Cesar Chavez / Potrero / Bayshore intersection area? Please explain. (Feel free to annotate the map)

8. What kinds of changes would make navigating the Cesar Chavez / Potrero / Bayshore intersection area feel more safe and convenient to you? (Feel free to annotate the map)

Rethinking Cesar Chavez East / **Short-Term Improvements**

NEXT MEETING | SUMMER 2011

LONG TERM IMPROVEMENTS, KANSAS TO ILLINOIS

- Discussion of trade-offs
- Preliminary design concepts

NEAR TERM IMPROVEMENTS, CHAVEZ/POTRERO/ BAYSHORE INTERSECTION AREA

- Refine initial concepts

NEAR TERM BICYCLE IMPROVEMENTS, KANSAS TO 280: SFMTA PROCESS, RELATED BUT NOT PART OF THE COMMUNITY DESIGN PLAN