

CASTRO STREET TODAY



EXISTING CONDITIONS



TRAVEL LANES

In the middle of the block, Castro Street's two travel lanes are nearly double the standard width.



SIDEWALKS
Narrow 12-foot wide sidewalks and poorly placed street furnishings result in pedestrian congestion on Castro Street.



INTERSECTIONS
Castro Street's intersections, most notably at Market Street, are large with long pedestrian crossings.

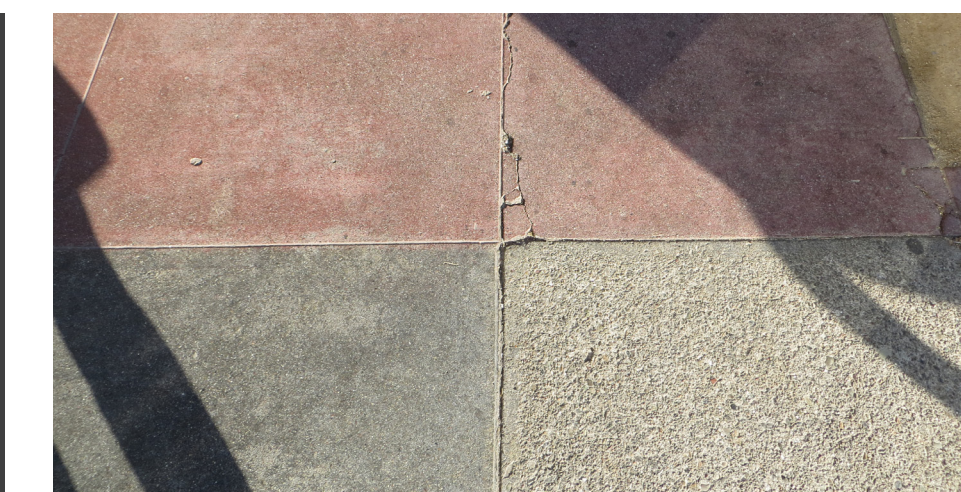


STREET TREES

Street tree planting on Castro Street is intermittent and varied.

LIGHTING

Lighting is auto-oriented, with "cobra-head" light fixtures and no pedestrian-scaled lighting on the sidewalk.

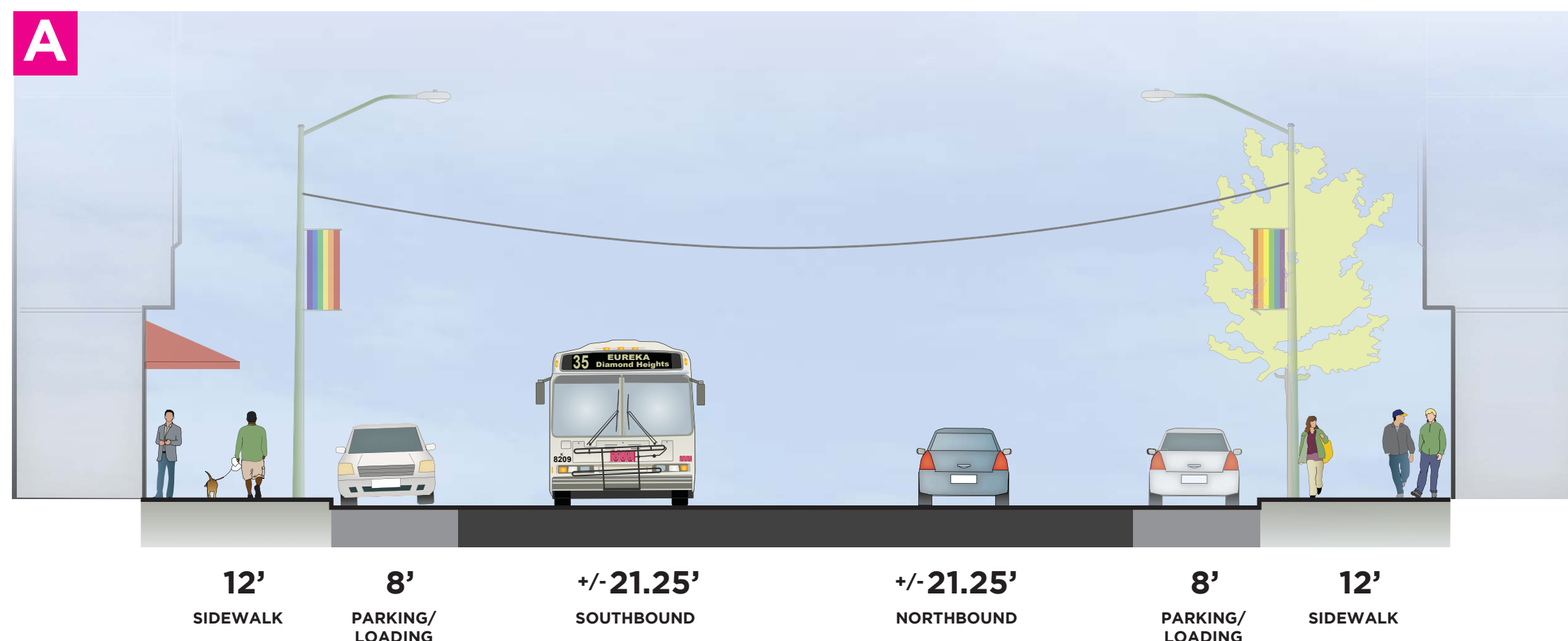


PAVING

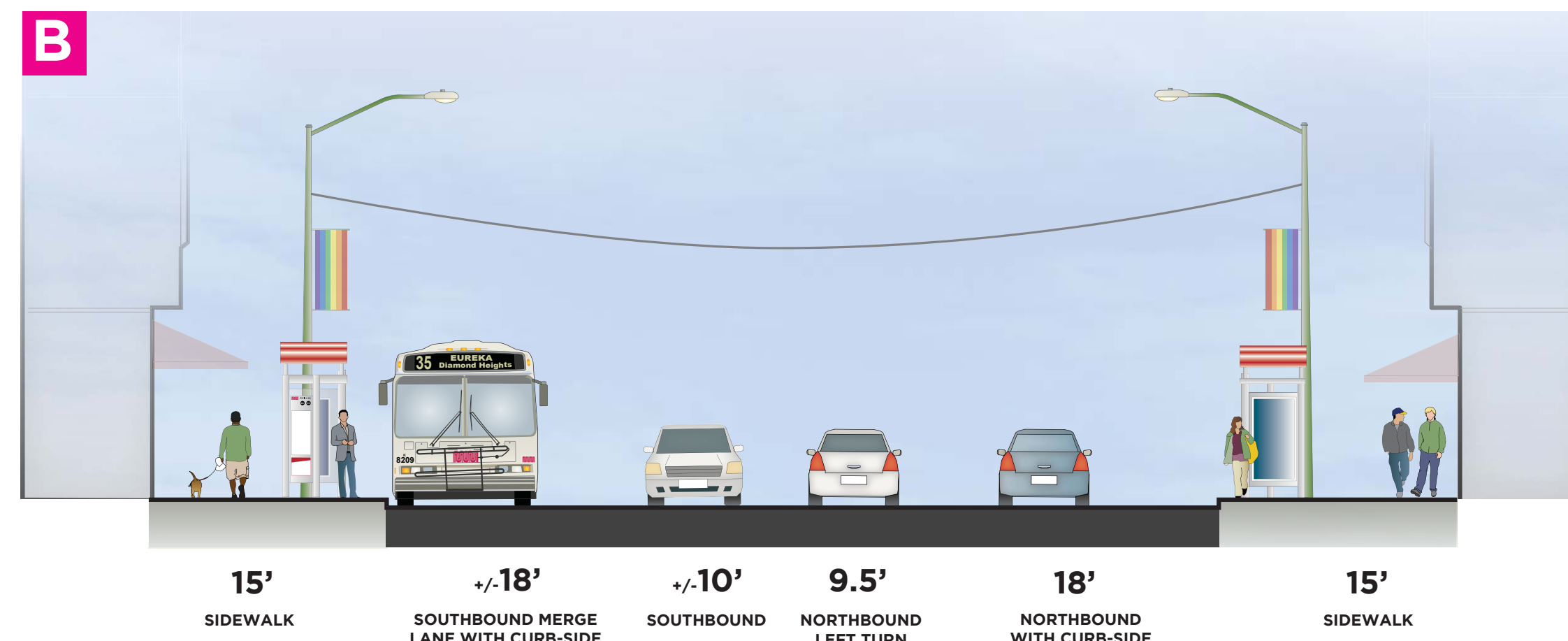
Sidewalks are paved in a patch-work of colors and scoring patterns.

EXISTING DESIGN

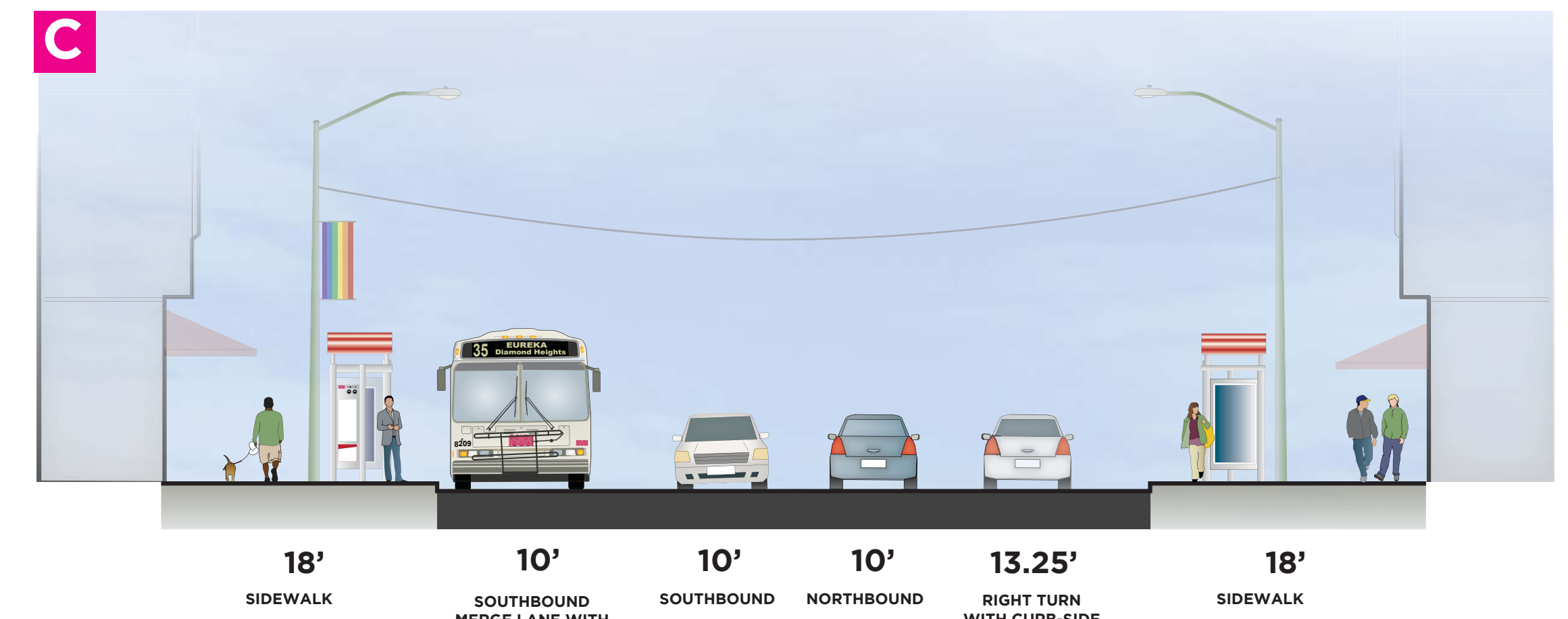
Mid-Block (Both Blocks)



South of 18th Street Intersection



South of Market Street Intersection



Existing Plan View

