



SAN FRANCISCO PLANNING DEPARTMENT

Executive Summary Proposed Commission Policy and Planning Code Amendment

HEARING DATE: JULY 14, 2011

Project Name: Standards for Bird-Safe Buildings
Case Number: 2010.0182TU
Staff Contact: Erika Lovejoy, Senior Planner
erika.lovejoy@sfgov.org, 415-575-9026
Reviewed by: AnMarie Rodgers, Manager Legislative Affairs
anmarie.rodgers@sfgov.org, 415-558-6395

Recommendation: **Approval with Modifications**

1650 Mission St.
Suite 400
San Francisco,
CA 94103-2479

Reception:
415.558.6378

Fax:
415.558.6409

Planning
Information:
415.558.6377

POLICY DOCUMENT AND PLANNING CODE AMENDMENT

At a public hearing on June 23, 2011, the Planning Commission (hereinafter referred to as "Commission") approved Resolution Number 18383 announcing the Commission's intent to Initiate Amendments to the Planning Code (hereinafter Code) that would implement the draft policy document titled "Standards For Bird-Safe Buildings". Both the proposed Ordinance and the draft policy document would be considered for adoption on or after July 14, 2011.

The Department received over 2200 comments on the draft proposal. The Department has conducted outreach with relevant private-section professional organizations, building owners, public agencies and non-profits. (See a complete list of associated outreach under public comment.) In response to the comments, the Department revised the policy document and published the June 2011 Standards for Bird-Safe Buildings. Should the Commission choose to adopt this policy document, the Department has drafted the attached proposed Ordinance to implement the policies for Bird-Safe Buildings. Pursuant to Code Section 306.3, the Department has provided notice for a hearing to consider the Code amendments contained in the draft Ordinance on or after July 14, 2011.

The Way It Is Now: Planning Code & Policy Guidance

The existing Code does not include considerations of Bird-Safe design. The General Plan has policies seeking to protect plant and animal life in the City and to ensure balance among conservation, utilization, and development of San Francisco's natural resources.

The Way It Would Be: Policy Guidance

The proposed policy document would seek to achieve the following:

- Review applicable research of bird/building collisions;

- Apply this research to San Francisco's unique built environment;
- Increase education and awareness of structural hazards for birds;
- Establish controls to 1) reduce building-related hazards for San Francisco's resident and migrant bird species and 2) ensure that developers and architects are not surprised by costly last minute requests to address the issue during the design review and approval processes; and
- Encourage voluntary actions by building owners and occupants to reduce future bird/building collisions in San Francisco.

The Way It Would Be: Planning Code Amendment

The proposed Ordinance would create or amend the following existing Sections within the Code to achieve the following: a) reduce building-related hazards for San Francisco's resident and migrant bird species; b) establish consistent building standards for creating bird-safe buildings; and c) provide certain exemptions from these requirements.

- **Create Section 139 Standards for Bird Safe Buildings to:**
 - a. Identify geographical areas in San Francisco that due to the location may present increased hazards for birds. Certain treatments would be required in the vicinity of these areas.
 - b. Identify certain building features which in and of themselves create special hazards for birds.
- **Amend Section 145.1 - Street Frontages, Neighborhood Commercial, Residential-Commercial, Commercial, And Mixed Use Districts to**
 - a. provide for exceptions to the existing transparency and fenestration requirements for buildings near sensitive habitat.

REQUIRED COMMISSION ACTIONS

The proposed draft policy document titled, "July 2011 Draft Standards for Bird-Safe Buildings," is before the Commission so that it may adopt or not adopt the document as Commission Policy.

The proposed Ordinance is before the Commission so that it may approve or disapprove the proposed Planning Code Amendments.

RECOMMENDATION

The Department recommends that the Commission *adopt* the draft policy document and adopt the attached Draft Resolution to that effect.

The Department recommends that the Commission recommend *approval with modifications* of the proposed Ordinance and adopt the attached Draft Resolution to that effect. Specifically, the draft Ordinance should be modified as follows:

- The requirements for bird-safe glazing as defined in §139(b)(1) should be revised to read "Bird-Safe Glazing Treatment may include fritting, netting, permanent stencils, frosted glass, exterior screens, physical grids placed on the exterior of glazing or UV patterns visible to

birds. To qualify as Bird-Safe Glazing Treatment, vertical elements of ~~the~~ window patterns ~~shall~~ should be at least 1/4 inch wide at a minimum spacing of 4 inches, ~~and~~ or horizontal elements at least 1/8 inch wide at a maximum spacing of 2 inches. ~~No qualified glazing shall have a visible light reflectance exceeding 10%.~~

BASIS FOR RECOMMENDATION

Vast evidence has demonstrated that bird collisions with buildings are real threat that can be significantly reduced through design. The issue of bird-safe design is increasingly of interest to the people of San Francisco and across the country. Bird-safe design has been raised as an issue during recent entitlement hearings and CEQA review. By defining the most hazardous conditions and codifying effective and appropriate controls, the Department seeks to decrease bird casualties and to increase certainty in the development process. Alternatives to codification could include adoption of design guidelines without requirements; further study of the issue; and/or implementation of the proposed certification. See attached draft policy document for more information. The modifications are recommended as 1) the intent was to require *either* vertical or horizontal patterns but not both and 2) in response to additional information from glass manufactures and architects about glass availability.

ENVIRONMENTAL REVIEW

The proposed amendment is exempt from environmental review under Sections 15307 and 15308 of the CEQA Guidelines.

PUBLIC COMMENT

The Department received over 2200 letters and emails on this topic. The vast majority of the comments expressed support for the proposal. There were also questions and suggested edits to the policy document regarding technical glass specifications for bird-safe glazing, consistency with LEED standards, bird-safe treatment options/cost, integration with "Lights Out" programs, timing of policy implementation, qualifying for Bird-Safe Building Certification, and clarifications regarding scientific data. Staff A copy of the public comment is available at the Planning Department for review and will be brought to the adoption hearing. Department outreach on this topic includes but was not limited to: San Francisco's Building Owners Management Association (BOMA), the San Francisco Chapter of the American Society of Landscape Architects (ASLA); the San Francisco Chapter of the American Institute of Architects (AIA); California Business Properties Association (CBPA); San Francisco Urban Planning & Research (SPUR); San Francisco Commission on the Environment and Policy Committee; California Academy of Science; Livable City; the Sierra Club; Point Reyes Bird Observatory; San Francisco Animal Care and Control; the State of California Building Standards Commission's Code Advisory Committee; the San Francisco Department of Building Inspection's Code Advisory Committee (DBI CAC); the Port of San Francisco, the Recreation and Parks Department; the Department for the Environment; private architects, scientists, developers, land use attorneys, and journalists.

RECOMMENDATION: Recommendation of Approval with Modifications

Attachments:

Exhibit A: Draft Planning Commission Resolution: Recommending Approval of Amendments to the Planning Code and Adoption of the 2011 Standards for Bird-Safe Buildings

- Exhibit B: 2011 Standards for Bird-Safe Buildings
- Exhibit C: Draft Ordinance Creating Controls for Bird-Safe Buildings in the Planning Code
- Exhibit D: Map of Proposed Urban Bird Refuge Areas



SAN FRANCISCO PLANNING DEPARTMENT

Draft Planning Commission Resolution Proposed Commission Policy and Planning Code Amendment

HEARING DATE: JULY 14, 2011

Project Name: Standards for Bird-Safe Buildings
Case Number: 2010.0182TU
Staff Contact: Erika Lovejoy, Senior Planner
erika.lovejoy@sfgov.org, 415-575-9026
Reviewed by: AnMarie Rodgers, Manager Legislative Affairs
anmarie.rodgers@sfgov.org, 415-558-6395

Recommendation: **Approval with Modifications**

1650 Mission St.
Suite 400
San Francisco,
CA 94103-2479

Reception:
415.558.6378

Fax:
415.558.6409

Planning
Information:
415.558.6377

ADOPTING A PLANNING COMMISSION POLICY DOCUMENT TITLED, "JULY 2011 STANDARDS FOR BIRD-SAFE BUILDINGS". THIS POLICY DOCUMENT WILL GUIDE THE COMMISSION AND DEPARTMENT IN REVIEW OF BUILDINGS WITH THE GOAL OF REDUCING BUILDING-RELATED HAZARDS FOR BIRDS IN SAN FRANCISCO.

RECOMMENDING THAT THE BOARD OF SUPERVISORS ADOPT A PROPOSED ORDINANCE THAT WOULD AMEND PLANNING CODE TO ACHIEVE THE FOLLOWING: A) REDUCE BUILDING-RELATED HAZARDS FOR SAN FRANCISCO'S RESIDENT AND MIGRANT BIRD SPECIES; B) ESTABLISH CONSISTENT BUILDING STANDARDS FOR CREATING BIRD-SAFE BUILDINGS; AND C) PROVIDE CERTAIN EXEMPTIONS FROM THESE REQUIREMENTS. INCLUDING BUT NOT LIMITED TO CREATING SECTION 139; AMENDING SECTION 145.1; ADOPTING FINDINGS, INCLUDING ENVIRONMENTAL FINDINGS, PLANNING CODE SECTION 302 FINDINGS, AND FINDINGS OF CONSISTENCY WITH THE GENERAL PLAN AND THE PRIORITY POLICIES OF PLANNING CODE SECTION 101.

PREAMBLE

WHEREAS, on February 5, 2009, the San Francisco Planning Commission (hereinafter "Commission") received information from Planning Department staff (hereinafter "staff") on San Francisco's "Lights Out for Birds Program" in response to a Commissioner request; and

WHEREAS, on October 8, 2009, the Commission requested that staff present information on Bird-Friendly Building Standards Informational Presentation by Christine Sheppard, PhD, Bird Collisions Campaign Manager of the American Bird Conservancy, Washington, DC; and

WHEREAS, on October 14, 2010, the San Francisco Planning Commission conducted a duly noticed public hearing at a regularly scheduled meeting to consider a draft document titled "Standards for Bird-Safe Buildings"; and

WHEREAS, at the October 14, 2010 hearing, the Commission requested the following:

1. Collect public comment on the draft "Standards For Bird-Safe Buildings" document through the end of 2010;
2. Consider revisions to the document based upon comments received;
3. Prepare a draft ordinance for the Commission's consideration in early 2011 that would implement proposed controls; and
4. Prepare a final "Standards For Bird-Safe Buildings" policy for the Commission's consideration;

WHEREAS, the Planning Commission (hereinafter "Commission") conducted a duly noticed public hearing at a regularly scheduled meeting to consider initiation of the proposed Ordinance on June 23, 2011; and

WHEREAS, at that hearing the Commission adopted Resolution Number 18383 to Initiate said amendments to the Planning Code and to announce their intent to consider adoption of the both the draft Ordinance and the draft Policy document on or after July 14, 2011;

WHEREAS, pursuant to Planning Code Section 306.3, the Planning Department has provided appropriate notice for a potential public hearing to consider adoption on or after July 14, 2011;

WHEREAS, the Planning Commission finds that vast evidence has demonstrated that bird collisions with buildings are a real threat that can be significantly reduced through design. The issue of bird-safe design is increasingly of interest to the people of San Francisco and across the country. Bird-safe design has been raised as an issue during recent entitlement hearings and CEQA review. By defining the most hazardous conditions and codifying effective and appropriate controls, the Commission seeks to decrease bird casualties and to increase certainty in the development process.

WHEREAS, The Commission finds that there are two circumstances that warrant regulation: 1) location-related hazards where the siting of a structure creates increased risk to birds, and 2) feature-related hazards which may create increased risk to birds regardless of where the structure is located.

WHEREAS, Location-related hazards are created by structures that are near or adjacent to large open spaces and/or water.

WHEREAS, Even if a structure is not located near a locational hazard, particular building features also may create a hazard for birds.

WHEREAS, the proposed Ordinance has been determined to be categorically exempt from environmental review under Sections 15307 and 15308 of the California Environmental Quality Act Guidelines.

WHEREAS, the proposed legislation and policy document are intended to resolve the aforementioned issues; and

WHEREAS, the Commission has heard and considered the testimony presented to it at the public hearing and has further considered written materials and oral testimony presented on behalf of Department staff and other interested parties; and

WHEREAS, all pertinent documents may be found in the files of the Department, as the custodian of records, at 1650 Mission Street, Suite 400, San Francisco; and

WHEREAS, the Commission has reviewed the proposed Ordinance and policy document; and

MOVED, that the Commission hereby *adopts* this Resolution to

- 1) recommend approval of the draft Ordinance to the Board of Supervisors with the following modification: The requirements for bird-safe glazing as defined in §139(b)(1) should be revised to read "Bird-Safe Glazing Treatment may include fritting, netting, permanent stencils, frosted glass, exterior screens, physical grids placed on the exterior of glazing or UV patterns visible to birds. To qualify as Bird-Safe Glazing Treatment, vertical elements of the window patterns ~~shall~~ should be at least 1/4 inch wide at a minimum spacing of 4 inches, ~~and~~ or horizontal elements at least 1/8 inch wide at a maximum spacing of 2 inches. ~~No qualified glazing shall have a visible light reflectance exceeding 10%.~~"; and
- 2) adopt as Commission Policy the document titled, "July 2011 Standards for Bird-Safe Buildings".

FINDINGS

Having reviewed the materials identified in the preamble above, and having heard all testimony and arguments, this Commission finds, concludes, and determines as follows:

1. **Issues related to Bird-Safe Buildings.** The Commission finds that:
 - Vast evidence has demonstrated that bird collisions with buildings are a real threat that can be significantly reduced through design. The issue of bird-safe design is increasingly of interest to the people of San Francisco and across the country. Bird-safe design has been raised as an issue during recent entitlement hearings and CEQA review. By defining the most hazardous conditions and codifying effective and appropriate controls, the Commission seeks to decrease bird casualties and to increase certainty in the development process.
 - There are two circumstances that warrant regulation: 1) location-related hazards where the siting of a structure creates increased risk to birds and 2) feature-related hazards which may create increased risk to birds regardless of where the structure is located.
 - Location-related hazards are created by structures that are near or adjacent to large open spaces and/or water.

- Even if a structure is not located near a locational hazard, particular building features may also create a hazard for birds.
 - The proposed legislation and policy document are intended to resolve the aforementioned issues; and
2. **General Plan Compliance.** This Resolution is consistent with the following Objectives and Policies of the General Plan:

I. ENVIRONMENTAL PROTECTION ELEMENT

OBJECTIVE 1

ACHIEVE A PROPER BALANCE AMONG THE CONSERVATION, UTILIZATION, AND DEVELOPMENT OF SAN FRANCISCO'S NATURAL RESOURCES.

POLICY 1.1 Conserve and protect the natural resources of San Francisco.

POLICY 1.2 Improve the quality of natural resources.

POLICY 1.3 Restore and replenish the supply of natural resources.

POLICY 1.4 Assure that all new development meets strict environmental quality standards and recognizes human needs.

OBJECTIVE 3

MAINTAIN AND IMPROVE THE QUALITY OF THE BAY, OCEAN, AND SHORELINE AREAS.

POLICY 3.2 Promote the use and development of shoreline areas consistent with the General Plan and the best interest of San Francisco.

OBJECTIVE 8

ENSURE THE PROTECTION OF PLANT AND ANIMAL LIFE IN THE CITY.

POLICY 8.2 Protect the habitats of known plant and animal species that require a relatively natural environment.

POLICY 8.3 Protect rare and endangered species.

OBJECTIVE 12

ESTABLISH THE CITY AND COUNTY OF SAN FRANCISCO AS A MODEL FOR ENERGY MANAGEMENT.

POLICY 12.1 Incorporate energy management practices into building, facility, and fleet maintenance and operations.

Discussion: The Introduction to the Environmental Protection Element parallels the issues at play in developing controls to ensure San Francisco's buildings are bird-safe. As stated in the Introduction, "The Environmental Protection Element addresses the impact of urbanization ... on the natural environment. In highly urban San Francisco environmental protection is not primarily a process of shielding untouched areas from the initial encroachment of a man-made environment. The scales already are and will continue to be balanced toward the side of development. The challenge in San Francisco is to achieve a more sensitive balance, repairing damage already done, restoring some natural amenity to the city, and bringing about productive harmony between people and their environment. An important purpose, therefore, of an

environmental protection element is to give natural environment amenities and values appropriate consideration in urban development along with economic and social considerations.”

II. URBAN DESIGN ELEMENT

OBJECTIVE 2

CONSERVATION OF RESOURCES WHICH PROVIDE A SENSE OF NATURE, CONTINUITY WITH THE PAST, AND FREEDOM FROM OVERCROWDING.

POLICY 2: Limit improvements in other open spaces having an established sense of nature to those that are necessary, and unlikely to detract from the primary values of open space.

Discussion: Part of the value of our open space is the opportunity to feel connection with nature. To ensure that San Francisco’s open spaces with bird habitat that provide the opportunity for birdwatching, the City should ensure that nearby buildings compliment this activity.

III. RECREATION AND OPEN SPACE ELEMENT

POLICY 2.13 Preserve and protect significant natural resource areas.

Discussion: The health of birds often reflects the health and trends of the land, air, and water upon which we humans also depend. People rely on birds for such services as pest control and keeping natural systems in balance. By eating insects, weed seeds, and nuisance rodents, birds provide us with free ecological services. The City can help ensure that we continue to reap these benefits by taking efforts to protect the migratory birds that visit and those that live here year round.

II. COMMERCE AND INDUSTRY ELEMENT

OBJECTIVE 1

MANAGE ECONOMIC GROWTH AND CHANGE TO ENSURE ENHANCEMENT OF THE TOTAL CITY LIVING AND WORKING ENVIRONMENT.

Discussion: According to “Birding in the United States: A Demographic and Economic Analysis by the U.S. Fish and Wildlife Service, “...birdwatchers generated \$85 billion in overall economic output, including \$13 billion in federal and state income taxes, and supported more than 863,000 jobs.”

3. **Planning Code Section 101 Findings.** The proposed amendments to the Planning Code are consistent with the eight Priority Policies set forth in Section 101.1(b) of the Planning Code in that:

1. That existing neighborhood-serving retail uses be preserved and enhanced and future opportunities for resident employment in and ownership of such businesses enhanced;

The proposed Ordinance will not disrupt existing neighborhood-serving retail. Future opportunities for employment in such buildings will not be affected by the proposal.

2. That existing housing and neighborhood character be conserved and protected in order to

preserve the cultural and economic diversity of our neighborhoods;

The proposed amendments will not have an impact on housing in Neighborhood Commercial Districts. Controls are in place in section 317 of the Planning Code that severely restricts the conversion of housing units to commercial units. New retail that is established in areas where these controls would apply would still be able to provide transparency on the ground floor where it is most important.

3. That the City's supply of affordable housing be preserved and enhanced;

The proposed amendments will have no adverse effect on the City's supply of affordable housing.

4. That commuter traffic not impede MUNI transit service or overburden our streets or neighborhood parking;

The proposed amendments will not result in commuter traffic impeding MUNI transit service or overburdening the streets or neighborhood parking.

5. That a diverse economic base be maintained by protecting our industrial and service sectors from displacement due to commercial office development, and that future opportunities for resident employment and ownership in these sectors be enhanced;

The proposed amendments would not cause displacement of the industrial or service sectors due to office development, and future opportunities for resident employment or ownership in these sectors would not be impaired.

6. That the City achieve the greatest possible preparedness to protect against injury and loss of life in an earthquake;

Preparedness against injury and loss of life in an earthquake is unaffected by the proposed amendments. Any new construction or alteration associated with a use would be executed in compliance with all applicable construction and safety measures.

7. That the landmarks and historic buildings be preserved;

Landmarks and historic buildings would be unaffected by the proposed amendments. Should a landmark or historic building trigger the requirements of the proposed Ordinance, the controls have been written to preserve the historic character and be compliant with City controls and guidelines for historic buildings as well as the Secretary of the Interior's Standards.

8. That our parks and open space and their access to sunlight and vistas be protected from development;

The City's parks and open space and their access to sunlight and vistas would be unaffected by the

proposed amendments. If anything, the proposal would require new development to be more compatible with our parks and open space.

I hereby certify that the Planning Commission ADOPTED the foregoing Resolution on July 14, 2011.

Linda Avery
Commission Secretary

AYES:

NAYS:

ABSENT:

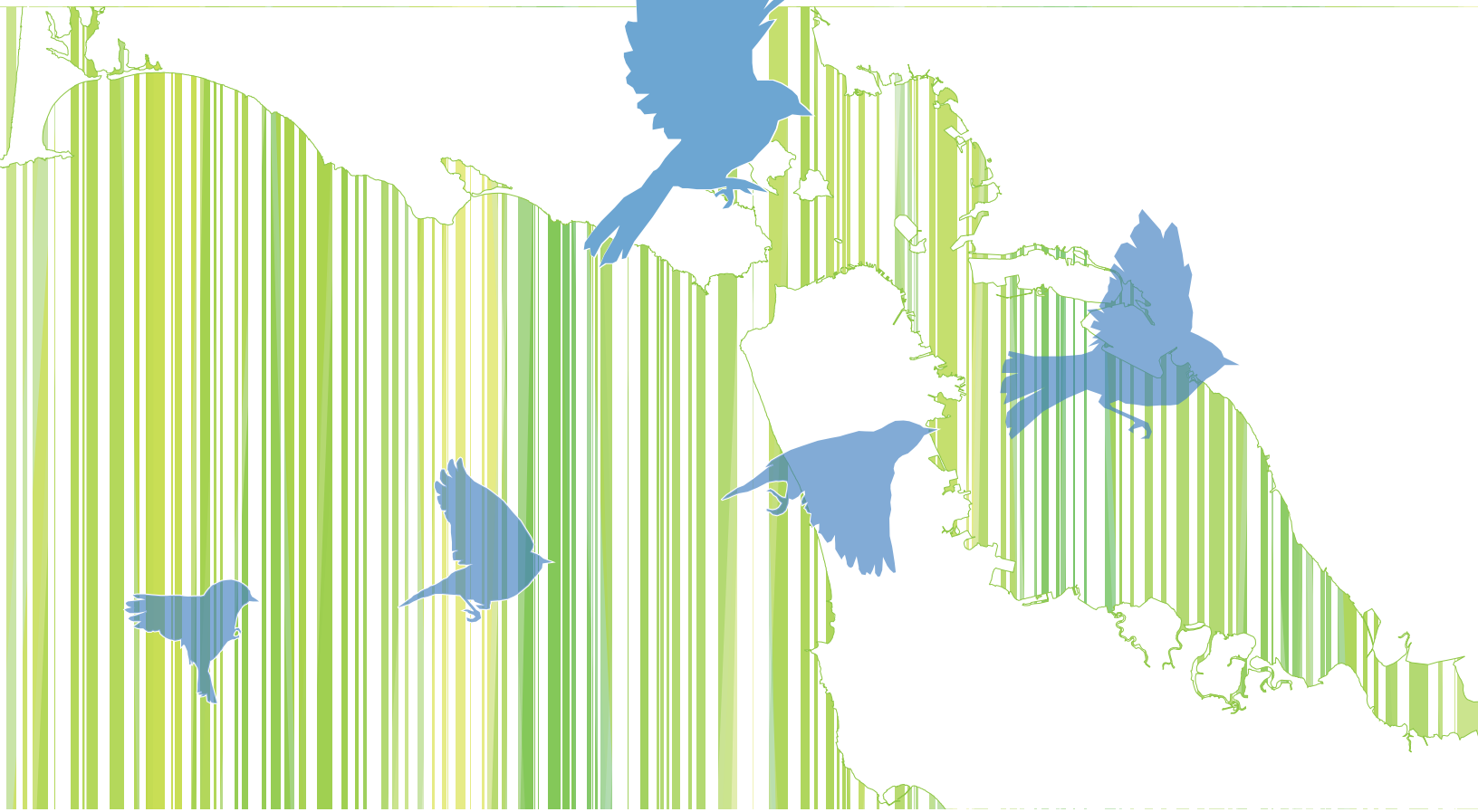
ADOPTED: July 14, 2011



SAN FRANCISCO
PLANNING
DEPARTMENT

Standards for **Bird-Safe Buildings**

SAN FRANCISCO PLANNING DEPARTMENT | PUBLIC REVIEW DRAFT JUNE 2011



Draft for Adoption: June 2011

This report is in draft form for review and comment.
Prepared for the San Francisco Planning Commission.



SAN FRANCISCO
PLANNING
DEPARTMENT

ACKNOWLEDGEMENTS

We express our appreciation to the Cities of Toronto, New York, and Chicago and the State of Minnesota, whose guidelines and standards provided a basis for these. Thanks also to the following people for their work to make the built environment safer for the winged animals who enrich our world, and with whom we share our City:

San Francisco Planning Commission:

Christina Olague, *President*
Ron Miguel, *Vice President*
Michael J. Antonini
Gwyneth Borden
Kathrin Moore
Hisashi Sugaya
Rodney Fong

San Francisco Planning Department:

John Rahaim, *Director*
Senior Management Team: Alicia John-Baptiste, *Assistant Director*; Scott Sanchez, *Zoning Administrator*; Bill Wycko, *Chief Environmental Review Officer*; Kelley Amdur, *Manager of Neighborhood Planning*; and David Alumbaugh, *Acting Manager of Policy Planning*. Project Team: AnMarie Rodgers, *Legislative Manager*; Erika Lovejoy, *Project Manager and Senior Environmental Planner*; Sheila Nickolopoulos, *Senior Administrative Analyst*; Joshua Switzky, *Planner* and Gary Chen, *Graphic Design*.

PRIVATE CONTRIBUTORS:

Christine Sheppard, PhD, *The American Bird Conservancy, Bird Collisions Campaign*
Noreen Weeden, *Golden Gate Audubon Society, Conservation Project Manager*
Mike Lynes, *Golden Gate Audubon Society, Director of Conservation*
Certain graphic images provide courtesy The American Bird Conservancy and the Audubon Society.

This document is based in part on guidelines published by: New York City Audubon Society, Inc., May 2007; the Audubon Minnesota, May 2010; and an unpublished draft of the National Guidelines by the American Bird Conservancy. In addition, material was drawn from many sources; every effort was made to cite those sources and any omissions are inadvertent.

NYC AUDUBON BIRD-SAFE BUILDING GUIDELINES CREDITS:

Project Director: Kate Orff, RLA, Columbia University GSAPP ; Authors: Hillary Brown, AIA, Steven Caputo, New Civic Works; Project Staff: E.J. McAdams, Marcia Fowle, Glenn Phillips, Chelsea Dewitt, and Yigal Gelb.

AUDUBON MN BIRD-SAFE BUILDING GUIDELINES CREDITS:

Project Director: Joanna Eckles, Audubon Minnesota. Contributor: Edward Heinen, Edward Heinen Architectural Consulting.

PREFACE: PURPOSE OF THE STANDARDS	02
I. THE ISSUE: BIRDS, BUILDINGS, PEOPLE, AND CITIES	04
Changing Nature of North America and Building Design	
Basics: Birds and Buildings	
Birds and Glass	
Birds and Lighting	
Other Causes of Collisions	
Implications for San Francisco	
Lessons from Major Cities	
Micro-Location vs. Macro-Location	
II. BIRD-SAFE TREATMENTS	18
Survey of Effective Treatments: Old and Innovative	
Glass and Façade Treatments	
Wind Generators	
Lighting Treatments	
III. BIRD-SAFE REQUIREMENTS AND GUIDELINES ACROSS AMERICA	26
IV. SAN FRANCISCO BIRD-SAFE BUILDING REQUIREMENTS	27
V. RECOMMENDED ACTIONS AND BIRD-SAFE STEWARDSHIP	33
Public Education and Outreach	
Building Owner and Tenant Information	
Monitoring of Bird/Building Collisions	
Lights out San Francisco	
VI. BIRD-SAFE BUILDING STANDARDS CHECKLIST	38



PREFACE: Purpose of the Standards

Photo by Robert Lewis



Varied Thrush

“The wide variety of native birds that thrive in urban areas underscores the importance of these artificial habitats to the survival of many bird populations. Creating greenspace in urban environments, landscaping with native plants in backyards and parks, adopting architecture and lighting systems that reduce collisions, and keeping pets indoors will provide the greatest benefit to breeding birds and migrants seeking safe places to rest and find food during their spectacular journeys.”

- 2009 State of The Birds Report by the United States Government US Department of Interior

Pigeons and sparrows are readily visible in San Francisco. These ubiquitous city birds are not shy about sharing our urban spaces. But the casual observer may be shocked to learn that our City's birds are much more diverse. There are about 400 species of birds in San Francisco; remarkably, this is nearly half the species in all North America (Kay 2009). For those who look, the shyer species are just around the corner. This is due in part to the diverse habitats of the Bay Area and its position on the coastal migration path, the Pacific Flyway. Some birds are well-adapted to urban life, and they may remain here as year-round “residents.” Others are migratory, passing through the City southward in autumn en route to their winter feeding grounds, then returning northward in spring to establish territories in summer breeding grounds.

Photo by Robert Lewis



Anna's Hummingbird

There are special problems posed for birds living in or flying through cities. Over 30 years of research has documented that buildings and windows are the top killer of wild birds in North America (Banks 1979; Ogden 1996; Hager et al. 2008; Klem 2009; Gelb and Delacretaz 2009). Structure collision fatalities may account for between 100 million and 1 billion birds killed annually in North America (United States Fish and Wildlife Service 2002; Klem 2009). According to the leading expert, Dr. Daniel Klem Jr., this toll strikes indiscriminately culling some of the healthiest of the species. “From a population standpoint, it's a bleeding that doesn't get replaced,” he stated, estimating that between one and five percent of the total migratory population die in window crashes annually (Klem, 2009). Many of these are endangered or threatened species whose populations are already declining due to habitat loss, toxin loads, and other severe environmental pressures.

Juvenile residents and migrants of all ages — those least familiar with the urban setting — face the greatest risk of injury or death from the hazards of the city environment. Collision hazards include vehicles, bridges, transmission towers, power lines, and turbines, but the majority of avian deaths and injuries occur from impacts with building components such as transparent or reflective glass. Night-time lighting also interferes with avian migrations. Scientists have determined that bird mortality caused by collisions with structures is “biologically significant” for certain species (*Longcore et al. 2005*). In other words, building collisions are a threat of sufficient magnitude to affect the viability of bird populations, leading to local, regional, and national declines. Night-migrating songbirds—already imperiled by habitat loss and other environmental stressors—are at double the risk, threatened both by illuminated buildings when they fly at night and by daytime glass collisions as they seek food and shelter.

While species that are plentiful may not be threatened by structure collisions, many species that are threatened or endangered show up on building collision lists (*Ogden 1996 and references therein*).

Strategies that improve the urban design quality or sustainability of the built environment may help to make a more bird-safe city. For example, San Francisco has a long-standing policy prohibiting installation of mirrored glass, to meet aesthetic goals. This policy also benefits birds, which mistake reflections for real space and don't perceive the glass as a deadly barrier. The launch of the Golden Gate Audubon Society, Pacific Gas and Electric Company, and Department of the Environment's voluntary Lights Out San Francisco program in 2008 links smart energy policy with bird preservation strategies.

Occasionally policy goals may conflict, and we must balance the benefits and costs of one policy against the other. For instance, gains in energy and resource conservation provided by wind generators could also have negative environmental impacts if installations of those wind farms increase mortality among flying animals.

Photo courtesy New York Audubon's "Bird-Safe Guidelines"



A Red-Tailed Hawk may see its reflection as a territorial rival to be driven away, resulting in a collision.

WHAT THIS DOCUMENT DOES

Annual kills at high-risk structures are foreseeable and avoidable and merit protection (*Klem, 2009*). This publication serves as the Planning Commission's policy document for Section 139 of the Planning Code, “*Standards for Bird-Safe Buildings*.” The controls described within aim to identify high-risk features in an urban setting and regulate these situations to the best of current scientific understanding. In areas where the risks are less well known, the Department does not propose to apply controls but instead recommends project sponsors use the checklist contained in this document as an educational tool to increase their understanding of potential dangers. Qualifications for achieving recognition as a Bird-Safe building are included in the document to acknowledge building owners who voluntarily take measures to help keep birds safe above and beyond the requirements. At this time, the Planning Department also urges local researchers to further explore the issue and for citizens to get involved in local monitoring efforts.

I. The Issue: Birds, Buildings, People and Cities

Changing Nature of North America and Building Design

The consequences of our population growth are well-known: sprawling development across the country compounds habitat loss and disrupts vital ecological functions. The rate of sprawl in the United States almost quadrupled between 1954 and 2000. An area of undeveloped land about the size of Connecticut is converted to urbanized landscapes annually in the United States (*U.S. Department of Agriculture 1997*). This loss of habitat exerts great pressures on our wildlife.

Less well-known to the general public are the effects of our specific development forms on wildlife. Buildings and birds have coexisted since people first sought shelter. Early blocky buildings posed little threat to birds as the building elements were quite visibly solid. The advent of mass produced sheet glass in 1902 greatly increased the potential for transparency. The innovation of steel frame buildings with glass curtain walls resulted in transparent high-rise buildings.

After the Second World War, these steel and glass buildings were widely used and became the iconic 20th Century American building. Today, planners and urban dwellers increasingly demand building transparency to achieve street activation and pedestrian interest. As glass surface area increases so do the number of bird collisions. After World War II birdwatchers began documenting major bird-building, single-event collisions that resulted in the deaths of hundreds of birds. The first recorded event occurred on September 10, 1948 when more than 200 birds of 30 species were killed upon collision with the Empire State Building (*McAdams 2003*). Similar events have occurred every decade with notable events killing 10,000 to 50,000 birds at a strike (*Bower 2000*). In 2011, the New York Times reported, that “After 5,000 red-winged blackbirds fell from the sky in Arkansas on New Year’s Eve, many Americans awakened to a reality that had not necessarily been on their radar: many birds die as a result of collisions with buildings” (*Kaufman 2011*). These single-event strikes are often tied to inclement weather, night migration, and brightly lit structures.



ABOVE: The proposed new Transbay Terminal presents a transparent façade with enticing vegetation visible both inside the building and on the roof. The façade is currently planned to include fritted glass.



ABOVE: Many historic buildings such as the old Transbay Terminal present a solid appearance.

While single-event collisions are dramatic, the bulk of bird deaths result from the cumulative effects of a lone, confused bird mistaking glass for a safe flight path. The lone bird strike occurs over and over with conservative estimates calculating that each building kills 10 birds per year on average in the United States (Klem 1990). Poorly designed buildings kill hundreds per year (Hager et al. 2008). Current research finds that earlier estimates of up to 1 billion bird deaths per year due to building collisions were conservative (Klem et al. 2009 and references therein).

New trends in green architecture can either increase or decrease the risk for birds. Green design that facilitates bird safety includes: the avoidance of light pollution, reduced disturbance to natural landscapes and biological systems, and lowered energy use. Green design can also be hard on birds. Green buildings surrounded by lush landscaping may attract more birds. Window reflections of adjacent greenery lure birds to false trees. Green atria inside buildings too may call birds to an inaccessible haven only to have their journey harshly interrupted mid-flight. In 2011, the Chicago Tribune reported that birds were crashing into the FBI's Chicago office, a Platinum LEED Building, at a clip of 10 birds a day during migration (DeVore 2011).

Green building design can go hand-in-hand with bird-safe design. The Green Building Council rating system, LEED, challenges designers to assess the impact of building and site development on

Photo courtesy of Lundberg Design



ABOVE: The City's new bus shelters designed by Lundberg Design use a subtle frit pattern to indicate the barrier. This design, called "SF Fog," is effective in alerting both people and birds to the glass. INSETS show how the frit pattern is more dense at the bottom and dissipates like the City's fog at the top.

wildlife, and incorporate measures to reduce threats. Buildings may be certified as silver, gold, or platinum according to the number of credits achieved. A LEED a bird-friendly pilot may be developed as early as summer 2011, for testing and eventual inclusion into the main LEED structure. There is still room for improvement. In the future, green design should thoroughly consider the impact of design on wild flora and fauna.

BELOW: The California Academy of Sciences showcases many green design features including a green roof set within a lush, green landscape that is a natural respite for birds migrating through the city. Because its use of glass could also pose a collision risk, researchers at the Academy are studying the effects of the building on birds and testing various methods of improving bird safety, including the use of external screens, as shown on page 29.

Def. 1st/10/18/002/uo0.555a0p0.w0.555/0511/0511/0511



The Basics: Birds and Buildings

BIRDS AND GLASS

Glass is everywhere and is one of the least recognized, but most serious, threats to birds; one that is increasing as humans continue to build within bird habitats across the planet. Clear glass is invisible to birds and to humans, but both can learn to recognize and avoid it. Unfortunately, most birds' first encounter with glass is fatal. They collide at full speed when they try to fly to sky, plants, or other objects seen through glass or reflected on its surface. Death is frequently not instantaneous, and may occur as a result of internal hemorrhage days after impact, far away from the original collision site, making monitoring the problem even more difficult. The two primary hazards of glass for birds are reflectivity and transparency.

REFLECTIVITY



Viewed from outside buildings, transparent glass often appears highly reflective. Almost every type of architectural glass under the right conditions

reflects the sky, clouds, or nearby trees and vegetation. Glass which reflects the environment presents birds with the appearance of safe routes, shelter, and possibly food ahead. When birds try to fly to the reflected habitat, they hit the glass. Reflected vegetation is the most dangerous, but birds may also attempt to fly past reflected buildings or through reflected passageways.

TRANSPARENCY



During daylight hours, birds strike transparent windows as they attempt to access potential perches, plants, food or water sources and other lures

seen through the glass. "Design traps" such as glass "skywalks" joining buildings, glass walls around planted atria and windows installed perpendicularly on building corners are dangerous because birds perceive an unobstructed route to the other side.



<http://www.princeton.edu/pr/pictures/f-jprinceton/modern/>



Photo by Aviliane Rodgers

TOP: Clouds and neighboring trees reflect in the glass curtain wall of Sherrerd Hall on the Princeton campus making it difficult for birds to distinguish real from reflection.

BOTTOM: A Market Street building with a transparent corner may lead birds to think the tree is reachable by flying through the glass.

GLAZING CHARACTERISTICS

Reflective and transparent glass each present hazards to birds (Gelb and Delacretaz 2009).

REFLECTIVITY

Image courtesy of Lightsoutindy.org



Photos Courtesy: NY Audubon

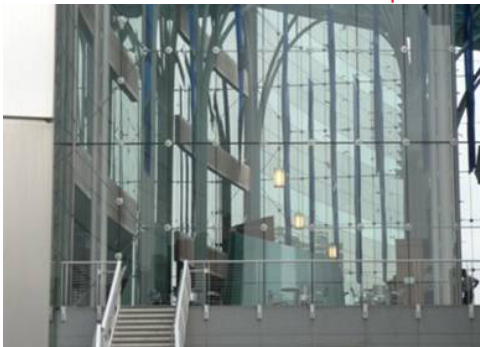
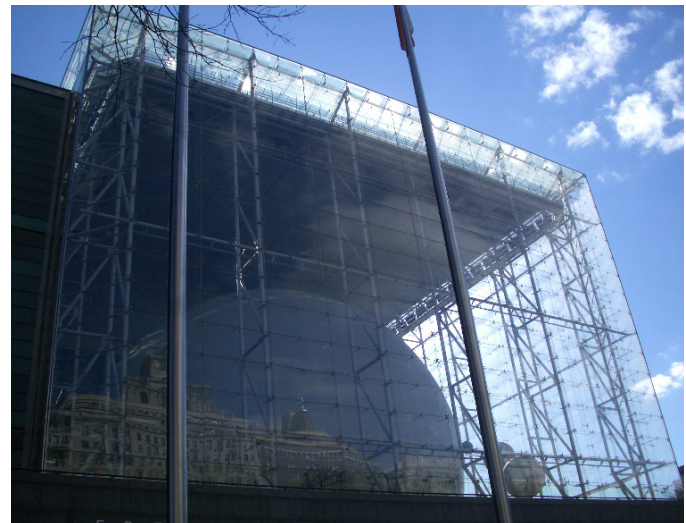
TRANSPARENCY

Image courtesy of Lightsoutindy.org



TOP: Reflections: A bird looking for a perch may mistake the reflected tree for an actual tree.

BOTTOM: Transparent glass can be mistaken for a clear flight path.

GLASS RELATIVE TO BUILDING HEIGHT AND MASSING

Typically, as building size increases, so does the amount of glass, making larger buildings more of a threat. Lower stories of buildings are the most dangerous because windows here are at or below canopy height and are more likely to reflect trees and other landscape features that attract birds. This makes a long, low building more of a hazard than a tall one of equal interior square-footage. However, as monitoring programs access setbacks and roofs of tall buildings, they are finding that birds also collide with buildings at the higher floors. This is an area where more information is needed.

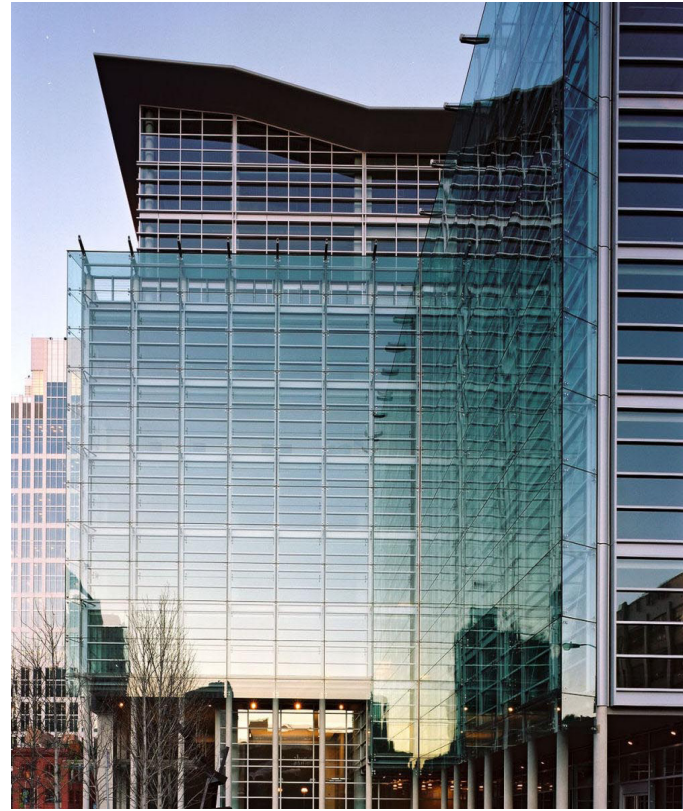
AMOUNT OF GLASS

Glass causes virtually all bird collisions with buildings. It's logical that as the amount of glazing increases on a building the threat also increases. A study in New York (Klem *et al*, 2009) found a 10% increase in the area of reflective and transparent glass on a building façade correlated with a 19-32% increase in the number of fatal collisions, in spring and fall, when visiting migrants are present.

REDUCING KNOWN BIRD TRAPS



Windowed courtyards and open-topped atria can be hazardous, especially if they are heavily planted. Birds fly down into such places, and then try to leave by flying directly towards reflections on the walls. Glass skywalks, handrails and building corners where glass walls or windows are perpendicular are dangerous because birds can see through them to sky or habitat on the other side.



TOP: SoMa's Foundry Square presents a full façade of highly reflective glass. While all glass can be reflective, glass manufacturers label glass with standards "reflectivity" ratings.



Photo Courtesy NY Audubon

ABOVE LEFT: This café on Market Street uses a glass wind barrier lined with attractive flowers that may entice birds.

ABOVE RIGHT: This glass walkway allows for a clear sightline through the passage. Without treatment to the glazing, this can create a hazards for birds.

CLEAR FLIGHT PATHS

Birds have evolved to fly through tree canopies at speed. This ability to navigate tight places is a benefit in most natural settings but may be a liability in the built environment. Early attempts to ward off bird collisions with glass panes included the unsuccessful attempts at placing falcon stickers in the middle of each pane. As the acrobatic bird below demonstrates and as current research has shown, collisions are most effectively reduced when flight paths are eliminated by the breaking of glass swaths to less than either 2" vertically or 4" horizontally (*Sheppard 2010*).



Hand Print Rule: Small birds may try to fly through any spaces that are about the size of a handprint.



<http://zuzutop.com/2009/07/a-job-for-superswallow/>



Exceptional Acrobats: Some birds such as the barn swallow pictured here can easily fly through spaces that are more narrow. This bird is traveling at 35 mph through a 2-inch seam.

We don't know exactly what birds see when they look at glass but we do know that the amount of glass in a building is the strongest predictor of how dangerous it is to birds. Other factors can increase or decrease a building's impact, including the density and species composition of local bird populations, the type, location and extent of landscaping and nearby habitat, prevailing wind and weather, and patterns of migration through the area. All must be considered when planning bird-friendly environments. Commercial buildings with large expanses of glass can kill large numbers of birds, estimated at 35 million per year in the US (*Hager et al 2008*). With bird kills estimated at 1-10 per building per year, the large number of buildings multiplies out to a national estimate of as much as a billion birds per year (*Klem et al 2009; Klem 1990, 2009*). As we'll discuss, certain particularly hazardous combinations can result in hundreds of deaths per year for a single building.



Photo by Hendrik Dacquin

BOTTOM A fatal bird-strike leaves behind a print of the bird's plumage as evidence of the force of the impact.

BIRDS AND LIGHTING



LIGHT

While recent research suggests that nighttime collisions may be more limited in scope than previously thought (*Gelb and Delacretaz 2009 and references therein*), at night artificial light degrades the quality of migratory corridors and adds new dangers to an already perilous journey. These conditions can be exacerbated by unfavorable weather and San Francisco fog, limiting birds' ability to see navigational markers like the stars and moon. Flood lights on tall buildings or intense uplights emit light fields that entrap birds reluctant to fly from a lit area into a dark one. This type of lighting has resulted in mass mortalities of birds (*Ogden 1996 and references therein*).

Lights disrupt birds' orientation. Birds may cluster around such lights circling upward, increasing the likelihood of collisions with the structure or each other. Importantly, vital energy stores are consumed in nonproductive flight. The combination of fog and light doubly affects birds' navigation and orientation. (*Ogden 2006*)

Besides reducing adverse impacts on migrating birds, there are significant economic and human health incentives for curbing excessive building illumination. In June 2009, the American Medical Association declared light pollution a human health threat and developed a policy in support of control of light pollution.

Overly-lit buildings waste tremendous amounts of electricity, increasing greenhouse gas emissions and air pollution levels, and of course, wasting money. Researchers estimate that the United States alone wastes over one billion dollars in electrical costs annually because poorly designed or improperly installed outdoor fixtures allow much of the light to go up to the sky. "Light pollution" has negative aesthetic and cultural impacts. Recent studies estimate that over two-thirds of the world's population can no longer see the Milky Way, a source of mystery and imagination for star-gazers. Together, the ecological, financial, and aesthetic/cultural impacts of excessive building lighting serve as compelling motivation to reduce and refine light usage (*Scriber 2008*).

Light at night, especially during bad weather, creates conditions that are particularly hazardous to night migrating birds. Typically flying at heights over 500 feet, migrants often descend to lower altitudes during inclement weather, where they may encounter artificial light from buildings. Water vapor in very humid air, fog or mist refracts light, greatly increasing the illuminated area around light sources. Birds circle in the illuminated zone, appearing disoriented and unwilling or unable to leave (*Ogden 2006*). They are likely to succumb to lethal collision or fall to the ground from exhaustion, where they are at risk from predators. While mass mortalities at very tall illuminated structures such as skyscrapers have received the most attention, mortality is also associated with ground level lighting and with inclement weather.

BELOW: Hazards can combine in downtown San Francisco. In this photo beacon lighting, light spillage, and fog mix.



Photo by AriMae Rodgers

While we typically think of birds as early risers, during migration season many species will travel at night. White lights, red lights, skyglow, brightly lit buildings and interiors can distort normal flight routes (*Poot et al. 2008*). The risks vary by species. Songbirds, in particular, seem to be guided by light and therefore appear more susceptible to collisions with lit structures. Migrant songbirds have been documented by multiple sources to suffer single night mortalities of hundreds of birds at a single location (*Ogden 1996 and references therein*).



Image courtesy Lights Out SF

ABOVE: Lighting and Navigation: Birds migrate by reading light from the moon and stars, as well as by geomagnetic signals radiated from earth. Cumulative light spillage from cities can create a glow that is bright enough to obscure the starlight needed for navigation.

LEFT: Beacon Effect: Individual structures may be lit in a manner that draws birds like a moth to a flame. Beacon structures can draw birds towards land that may offer little shelter or food or towards collisions with glass. Once at the structure, birds may be hesitant to leave the lit area causing them to circle the structure until exhausted. (*Ogden 1996*)



Image courtesy Lights Out SF

RIGHT: Skyglow can be increased during periods of inclement weather. Current research indicates that red lights in particular may disrupt geomagnetic tracking. Red lights required for airline safety would be permitted (above image). Decorative red lighting, such as on the building below in New York, would be discouraged.



Image courtesy NY Audubon



Map courtesy of Texas Parks and Wildlife Department.

OTHER CAUSES OF COLLISIONS:

LOCATION: MACRO-SETTING

San Francisco is on the Oceanic Route of the Pacific Flyway. During migration, birds tend to follow rivers and the coastline. In this way migrants funnel southward together in the fall and disperse northward in the spring.

VISITING BIRDS

Migrating birds are unfamiliar with the City and may be exhausted from their flight. Instances of collisions rise during the migratory seasons as birds travel to lower elevations to feed, rest, and use light to recalibrate their navigation. (Hager et al. 2008).

LEFT: Millions of birds – more than 350 species – follow the Pacific Flyway. Of the two primary routes, the Oceanic Route passes through the Bay Area. Spring migration occurs between February through May, and fall migration begins in August and lasts through November. During this time, collisions with buildings can increase notably.



Photos by Eddie Burley.

LEFT: According to the Golden Gate Audubon Society, over 250 species migrate through San Francisco Bay, many of them small songbirds such as warblers, thrushes, tanagers and sparrows that migrate at night and may be more susceptible to collisions with structures when descending for feeding and resting because of unfamiliar territory and confusing signals from the urban environment. Bird photos from left to right are Anna's Hummingbird, Yellow Warbler, and Lazuli Bunting.

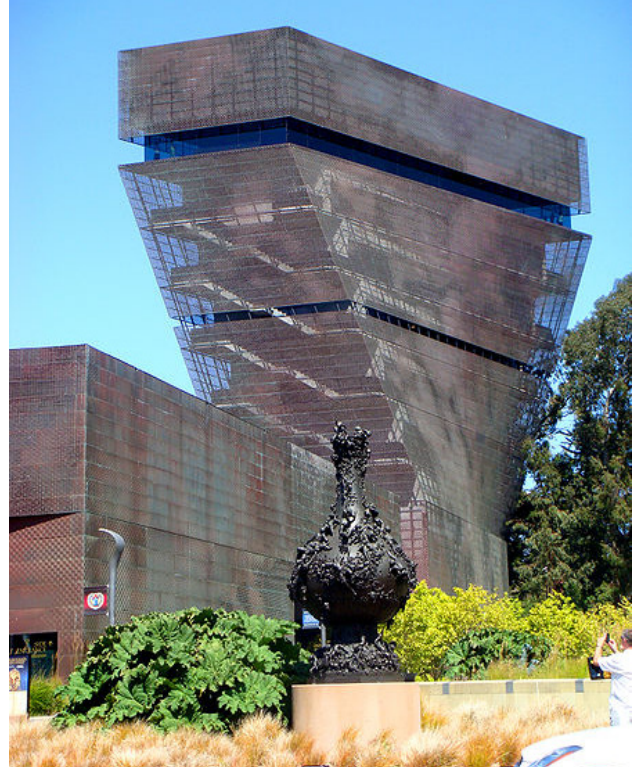
LOCATION: MICRO-SETTING

How a building meets adjacent landscape features can be critical in determining the risk to birds. Buildings with large windows located adjacent to extensive vegetation present great hazards. In suburban areas, buildings with these features have been documented to kill 30 birds per year (*Klem 1990; and O'Connell 2001*). This combination may be even more lethal in urban areas. Studies of Manhattan structures with large swaths of glazing adjacent to large open spaces have recorded well over 100 collisions per year (*Gelb and Delacretaz 2009*).

BUILDING FEATURES

Well-articulated buildings orient people as well as birds, directing flow of traffic, creating enticing rest areas and adding aesthetic appeal.

RIGHT: Although located in a park setting, the De Young Museum minimizes hazards due to its low amount of glazing and perforated copper façade.

**WEATHER CONDITIONS**

Inclement weather can obscure obstacles and exacerbate skyglow conditions (*Ogden 1996 and references therein*).



http://izismile.com/2009/09/30/beautiful_pictures_of_san_francisco_covered_with_fog_10_pics_1_video.html

Implications for San Francisco

Three decades of researching bird/building collisions has yielded both many answers and posed new questions. The high number of North American bird deaths and the ecological importance of birds demonstrate that the problem exists on a national level, but it is natural to wonder if the dense nature of San Francisco presents the same compelling pressure for a local response. The short answer is yes—San Francisco has both an important population of birds and a potentially injurious built environment for them. As discussed previously, San Francisco is both home to many birds and is on a major migratory pathway. Locally, there are incidents of celebrated birds such, as the Peregrine Falcon, repeatedly losing their young due to collisions with downtown skyscrapers. With only a few studies currently underway in San Francisco and results not yet

complete, anecdotally, local birders have monitored several buildings and have noted significant numbers of bird injuries and deaths (Weeden, 2010). San Francisco Animal Care and Control staff further reported collecting 938 wild birds over a two year period from May 2008 through June 2010, noting the majority of birds were found during the spring and fall migratory periods. The California Academy of Sciences in Golden Gate Park is spearheading their own research and bird-safe building methods, in a proactive effort to avoid bird fatalities at their facility. In lieu of large-scale local monitoring programs there are a great many studies of dense urban cities that we can further draw upon. These studies demonstrate that birds respond similarly to certain building and environmental features, regardless of geographic location.

SPOTLIGHT ON A LOCAL CELEBRITY

The Peregrine Falcon population suffered a huge blow to their numbers due to the use of pesticides including DDT beginning in the 1950s. In 1970 the California Peregrine Falcon population was reduced to only two known breeding pairs. The Santa Cruz Predatory Bird Research Group (SCPBRG) participated in the reintroduction of the species and has monitored the Peregrine Falcons nesting in San Francisco and other sites.

Natural cliff dwellers, the species adapted to nesting in bridges and downtown high-rises. As the population increased, Peregrine Falcons were reported in the San Francisco financial district and in 1987 a nest box was placed near a commonly used perch on the PG&E Headquarters Building. In 2003, Peregrine Falcons nested in the downtown for the first time and have been a closely watched since. SCPBRG trained citizens to participate in a group called “Fledge Watch” to increase understanding of how young falcons fare in the city. In 2009, 76 people volunteered for 5 hour shifts monitoring the 36-58 day old Peregrines from sunrise to sunset in either San Jose or San Francisco. The public could also view the falcons from the downtown building nest via a webcam.

According to Glenn Stewart of SCPBRG, “while there have been building collision fatalities, the target nest success of Peregrine Falcons in San Francisco was 1.5 per nest and has been exceeded at 1.6 young fledged per nest.”

It appears that several weeks after fledging, urban Peregrine Falcons recognize glass as a barrier. In the first few weeks when the young are learning to fly they are most at

risk for a collision. In other habitats, falcons face predators like eagles, owls, and when on the ground by bobcats, and coyotes. Like other birds, Peregrine Falcons see in the ultra violet (UV) range.

The architects and designers of the downtown environment did not consider bird building collision as a potential risk. In the future when buildings are being designed and upgraded, the latest information and options should be considered.

- Noreen Weeden, *Golden Gate Audubon Society*



Photo by Glenn Nevill

A native San Franciscan juvenile Peregrine Falcon (deceased offspring of “Dapper Dan” and “Diamond Lil”) perched on sill near reflective glass. All three fledged young from that year (2009) died as a result of building collisions. Two more fledglings died from collisions in 2011.

LESSONS FROM MAJOR CITIES

Academic researchers and bird-rescue organizations in Chicago, Toronto, and New York City have documented thousands of structure collisions and come to some interesting conclusions.

Perhaps the most established monitoring program of bird-building collisions in a dense city is NYC Audubon's Project Safe Flight in Manhattan. Project Safe Flight documented over 5,400 collisions between 1997-2008. A recent study (*Gelb, Delacretaz 2009*) analyzed this data to determine the critical contributing factors for the structures with the largest number of bird fatalities.

- The study looked at the 10 most deadly collision sites and found the combination of open space, vegetation, and large windows (greater than 1 meter x 2 meter) to be more predictive of death than building height.
- The frequency of collisions is highest along façades that have lush exterior vegetation and either reflective or transparent windows.
- The majority of the collisions occurred during the daytime and involved migrant species.
- High-rise buildings and night lighting presented less risk than windows adjacent to open spaces one hectare or greater in size.
- The majority of collisions are likely due to high-collision sites that feature glass opposite exterior vegetation.
- Urban mortalities may be higher than previously thought. Non-urban studies estimated that high-collision sites would have about 30 collisions per year. At the Manhattan collision sites examined in this study, well over 100 collisions were recorded per year.

The most dangerous building in this study was not a high-rise, but instead was a 6-story office building adjacent to densely vegetated open space.

Studies in Toronto and other eastern and Great Lakes cities have documented tens of thousands of bird fatalities attributable to building collisions. A 10-year study of bird-building collisions in downtown Toronto found over 21,000 dead and injured birds in the city's

downtown core. A 25-year study by researchers from Chicago's Field Museum of Natural History documented a particularly problematic building in Chicago (McCormick Place Convention Center) with over 30,000 dead birds of 141 species. The lights at the McCormick Palace were left on at night until 2000. Anecdotal reports for this building cited an 80% decrease in the number of birds killed, by simply turning out building lights (*Kousky 2004*).

Other researchers have agreed that lights can cause a significant problem, but that turning off lights isn't the only answer (*Shephard, Klem 2011*). As shown in the Manhattan study of ten buildings, daytime collisions were higher and occurred in areas with vegetation opposite glass. Toronto's approach to tackle this dual issue was to provide mandatory construction standards for daytime, while continuing to increase participation in their Lights Out program at night.



Photos courtesy NY Audubon

ABOVE: The windows of Morgan Mail Building in Manhattan are adjacent to green landscaped open spaces, making it the most dangerous for birds in a recent study.



RIGHT: Morgan Mail Building causality.

Spotlight on San Francisco's Migrant Birds

Bird collisions with buildings occur year-round, but peak during the migration period in spring and especially in fall when millions of birds travel between breeding and wintering grounds. Migration is a complex phenomenon, and different species face different levels of hazards, depending on their migration strategy, immediate weather conditions, availability of food, and anthropogenic obstacles encountered en route.

Photo by Kristen Weeden



Nocturnal migrants: Many songbirds migrate at night, possibly to take advantage of cooler temperatures and less turbulent air, and because they need daylight to hunt insects for food. Generally, these birds migrate individually, not in flocks, flying spread out across

most of their range. Migrants depart shortly after sundown. The number of birds in flight peaks before midnight, then drops. Songbirds may fly as many as 200 miles in a night, then stop to rest and feed for one to three days, but these patterns are strongly impacted by weather, especially wind and temperature. Birds may delay departure, waiting for good weather. They generally fly at an altitude of about 2,000 feet, but may descend or curtail flight altogether if they encounter a cold front, rain, or fog. There can be a thousand-fold difference in the number of birds aloft from one night to the next. Concentrations of birds may develop in 'staging areas' where birds prepare to cross large barriers such as the Great Lakes or Gulf of Mexico.

Photo by Eddie Barthey



Diurnal migrants: Daytime migrants include raptors, which take advantage of air currents to reduce the energy needed for flight. Other diurnal migrants, including shorebirds and water-birds, often fly in flocks and their stopover sites are less dispersed because of their dependence on bodies of water. This means that daytime migration routes often follow land forms such as rivers and mountain ranges, and birds tend to be concentrated along these routes or 'flyways'. Not all songbirds migrate at night—species such as robins, larks, kingbirds and others migrate during the day. Birds' daytime flight altitudes are generally lower than their nighttime counterparts.

Millions of birds, especially songbirds, are thus at risk, as they ascend and descend, flying through or stopping at or near populated areas. As city buildings grow in height, they become unseen obstacles by night and pose confusing reflections by day. Nocturnal migrants, after landing, make short, low flights near dawn, searching for feeding areas and running a gauntlet of glass in almost every habitat: in cities, suburbs and, increasingly, exurbs. When weather conditions cause night flyers to descend into the range of lighted structures, huge kills can occur around tall buildings. Urban sprawl is creating large areas lit all night that may be causing less obvious, more dispersed bird mortality.

- Christine Sheppard, *American Bird Conservancy*

THE IMPORTANCE OF MACRO-LOCATION (ON MIGRATION PATH) VS. MICRO-LOCATION (WITHIN A PARK-LIKE SETTING) AS A RISK FACTOR

A study of collisions at suburban office parks in Virginia found a large mortality rate for migrant birds even though the office parks were not on a migratory route—suggesting that the combination of mirrored windows and vegetation was more of a collision risk to visiting birds (*O'Connell 2001*). This study also suggests that the location of the building relative to the flyway may be less important than other risk factors such as building design and siting relative to plantings and open space.

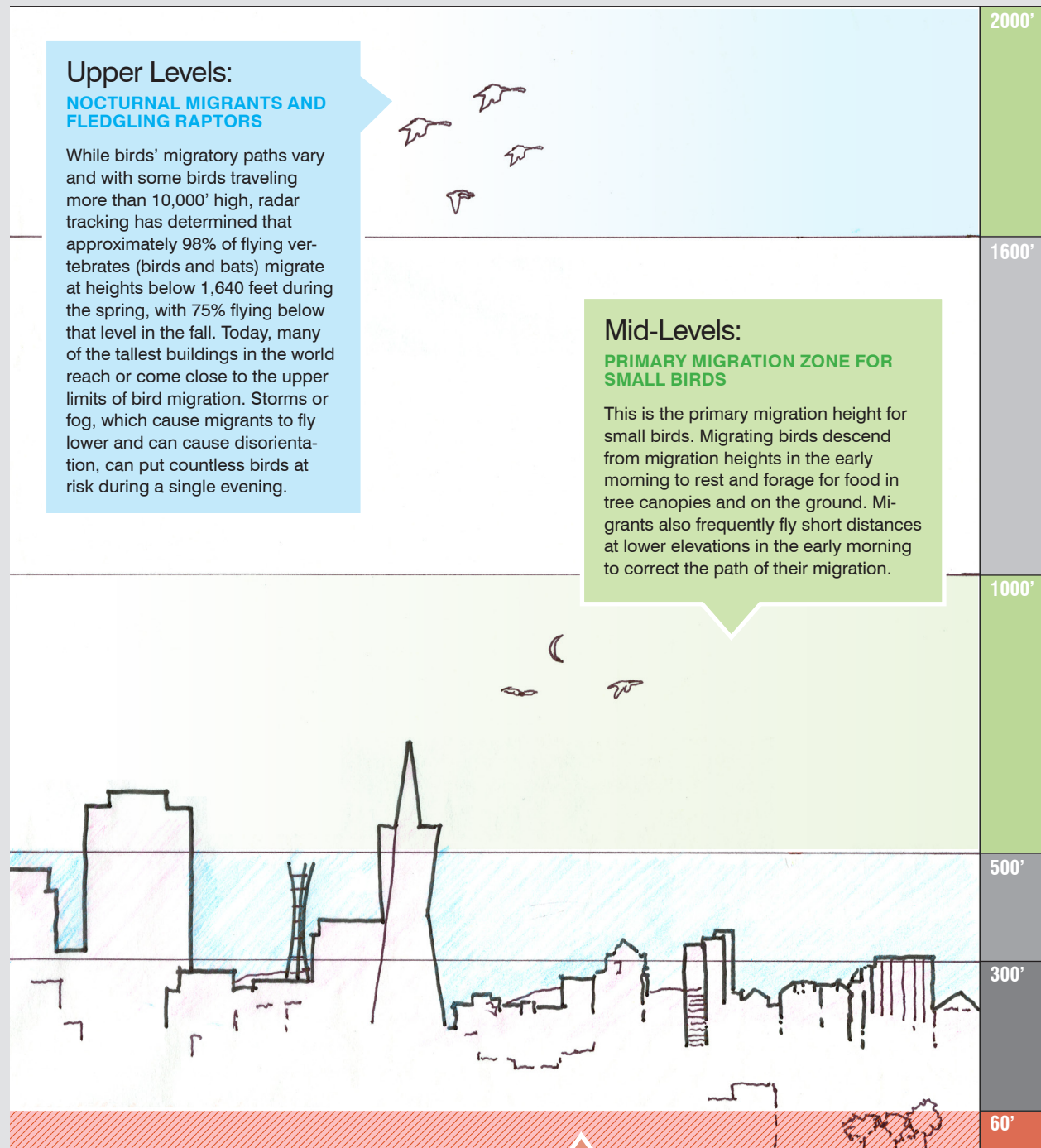
Photos by Eddie Barthey



By flying at night, migrants like the Orange-Crowned Warbler (NEAR RIGHT) and Western Tanager (ABOVE LEFT) minimize predation, and avoid overheating that could result from the energy expended to fly such long distances. This also enables them to feed during the day and refuel for the night.

Daytime migrants like this Cooper's Hawk (FAR RIGHT) and the Sharp-shinned Hawk (ABOVE RIGHT) depend on the heating earth for added lift. Riding rising air currents called thermals, these birds take advantage of this lift to rise to the top of one thermal, set their wings in the direction they want to travel and then coast to the next thermal.

Spotlight on Building Height and Bird Migration



II. Bird-Safe Treatments

A Survey of Treatments from Easy to Innovative

Effective bird-safe building treatments exist and have been employed on buildings of significant architectural stature. San Francisco has a local example of such treatments that has been recognized nationally. The new Federal Building is cited as an example of bird-safe building design in United States Representative Mike Quigley's (D-IL) pending bill, "Federal Bird-Safe Buildings Act of 2011" (*House Bill No. 1643*). This bill, if adopted, would require federal buildings to incorporate bird-safe design principals.

Bird-safe design options are limited only by the imagination. Safe buildings may have large expanses of glass but use screens, latticework, grilles and other devices, both functional and decorative, outside the glass or integrated into the glass. There are treatments for existing glass that will reduce mortality to zero. These treatments do provide a view from inside, though often presenting a level of opacity from the outside, a factor that can deter application of these solutions. Glass treatments that can eliminate or greatly reduce bird mortality, while only minimally obscuring the glass itself, are therefore highly desirable and encourage more 'bird-friendly' design.

RIGHT: The south façade sports perforated steel panels that filter sunlight and serve as thermal buffers but also may convince birds that the structure is solid.

BOTTOM: San Francisco's Federal Building's north façade boasts floor-to-ceiling glass buffered behind a grid of metal catwalks and opaque glass fins.

Photos by Kurt Rodgers, SF Chronicle
<http://www.sfgate.com/cgi-bin/article.cgi?f=/c/a/2007/02/25/MNG2DOATDN1.DTL>



GLASS AND FAÇADE TREATMENTS

Reduction of bird strikes with new buildings can be achieved with simple and cost-effective means. Creating a visual signal, or “visual noise barrier,” that alerts the birds to the presence of glass objects can be achieved with relatively little additional cost. Fritting, the placement of ceramic lines or dots on glass, is one method of creating a visual noise barrier. People inside the building see through the pattern, which has little effect on the human-perceived transparency of the window. Fritting can also reduce air conditioning loads by lowering heat gain, while still allowing enough light transmission for day-lighting interior spaces. There is now a commercially available insulated glass with ultra-violet patterns that are designed to deter birds while largely being imperceptible to humans.

FRITTED AND FROSTED GLASS

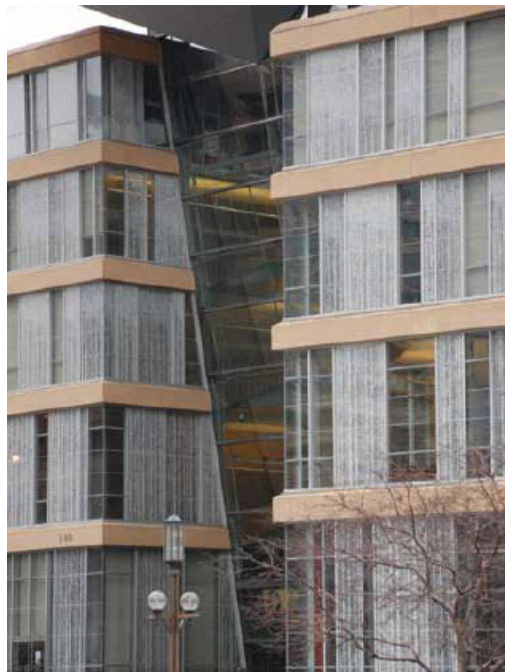
Ceramic dots, or frits, are applied between layers of insulated glass to reduce transmission of light. These can be applied in different colors and patterns and can commonly be seen on commercial buildings. At Swarthmore College, external, densely fritted glass was incorporated into the design of the Unified Science Center. Virtually no strikes have been reported at either site. Fritting is a commonly-used and inexpensive solution that is most successful when the frits are applied on the outside surface.

ANGLED GLASS

While angled glass may be a useful strategy for smaller panes, it is generally not effective for large buildings. Birds approach glass from many angles, and can see glass from many perspectives. Generally, the desired angle for effective treatment is 20-40 degrees. These angles are difficult to maintain for large buildings, however, this strategy may work in low-scaled buildings with a limited amount of glass (Ogden 1996 and references therein; and Klem et al. 2004).



Minnesota Bird-Safe Building Guidelines



Minnesota Bird-Safe Building Guidelines

LEFT: Swarthmore College uses fritting on a large expanse of glass facing an open space.

RIGHT: The Minnesota Central Library's atrium features angled glass, a dramatic architectural feature that reduces reflections of habitat and sky from most angles. The likelihood of fatal collisions at this angle is lessened.

ULTRA-VIOLET GLASS

The Bronx Zoo uses glass that reflects UV light—primarily visible to birds, but not to people (Klem 2009). This glass may be about 50% more expensive than typical glass but is comparable to energy-efficient glass (Eisenberg 2010).

TOP RIGHT: The Bronx Zoo from the NYTimes.



http://www.nytimes.com/2010/08/29/business/29novel.html?ref=anne_eisenberg

FILM AND ART TREATMENT OF GLASS

Windows may be used as canvases to express building use through film and art. In certain instances, windows made bird-safe through an application of art may receive funding through San Francisco's One Percent for Public Art Program.

SECOND RIGHT: IIT Student Center, Chicago.

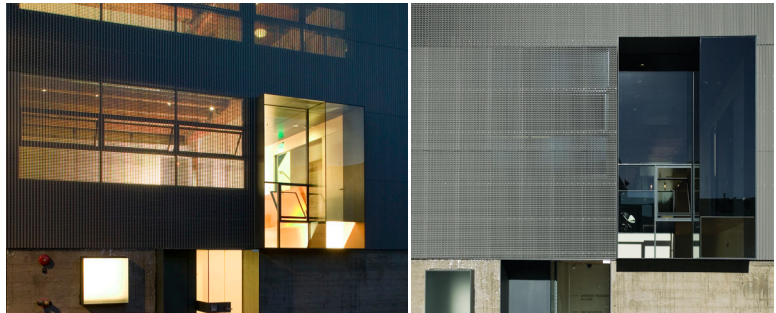


NY Bird-Safe Design Guidelines

EXTERNAL SCREENS

External screens are both inexpensive and effective. Screens can be added to individual windows for small-scale projects or can become a façade element of larger developments. This time-tested approach precludes collisions without completely obscuring vision. Before non-operable windows, screens were more prevalent. At the other end of the spectrum are solutions that wrap entire structures with lightweight netting or screens. To be effective, the netting must be several inches in front of the window, so birds don't hit the glass after hitting the net.

THIRD RIGHT: The Matarozzi/Pelsinger Building in San Francisco is a LEED Gold building designed by Aidlin-Darling. It has screens over the majority of its façade that protect birds from impact and allow views out for users of the building (left nighttime/right daytime)

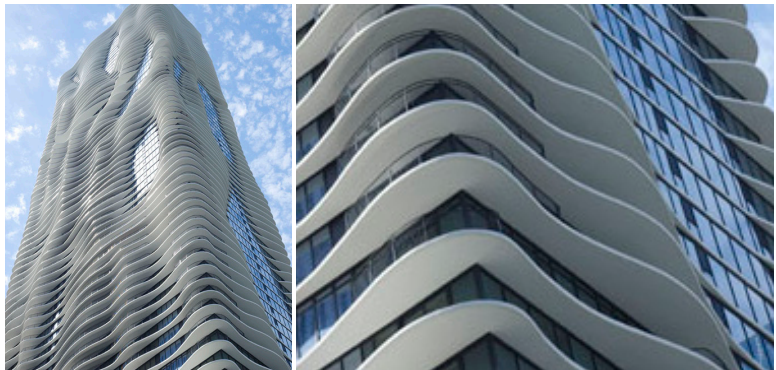


Minnesota Bird-Safe Building Guidelines

ARCHITECTURAL FEATURES

Overhangs, louvers, and awnings can block the view of the glass from birds located above the feature but do not eliminate reflections. This approach should be combined with window treatments to achieve results.

BOTTOM RIGHT: The award winning Aqua Tower, Chicago, uses overhangs and other features that provide bird-safe design as well as energy efficiency.



Steve Hall/Studio Gang

NETTING

Netting has proven to be a versatile and effective option for bird-safe window treatment. Netting is stretched several inches over windows or entry ways to prevent birds from hitting the glass. Specifically designed netting is almost completely invisible and does not require invasive installation techniques. It can be used for new buildings, retrofits to existing buildings, replacement glass façades, and for preserving original features of historic buildings.

During the spring and fall migrations, agency staff at the FBI building in Chicago discovered at least 10 birds a day crashing into windows outside of their first floor, plant filled indoor atrium. Seasonal netting was installed and bird collision monitors noted a substantial reduction in bird strikes, without compromising the look of the building or the ability to see into or out of the lobby (DeVore 2011).

Netting has also been used successfully to treat historic buildings, where it's critical to maintain the original character of the building. Prestigious historic preservation awards have been earned for netting work on famous buildings such as the American Museum of Natural History and the US Department of Justice. Other historically significant structures with netting include New York Metropolitan Opera, Independence Hall, and even Alcatraz Prison.



Heather Charles, Chicago Tribune

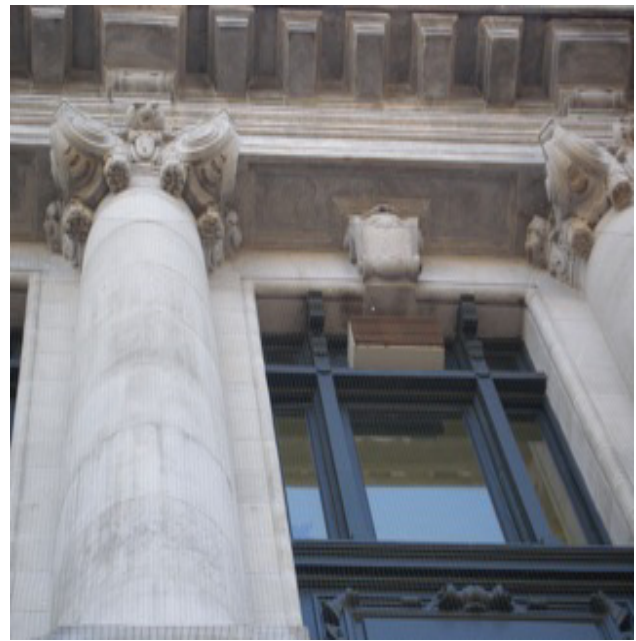


Photo Courtesy of Birdmasters, Inc.

TOP RIGHT: Special agent Julia Meredith discovered so many dead and injured birds on the ground outside the Chicago offices of the FBI that she lobbied to have special bird-friendly netting installed on the building's first floor windows. She estimates that the nets have reduced the number of birds crashing into the windows by 90 percent.

CENTER RIGHT: A close-up view of the New York Public Library barely shows the marble toned and clear netting over the building.

BOTTOM RIGHT: The netting placed over the windows at the New York Public Library is virtually invisible and helps prevent both bird strikes and building deterioration from pest species.



Photo Courtesy of Birdmasters, Inc.

WIND GENERATORS

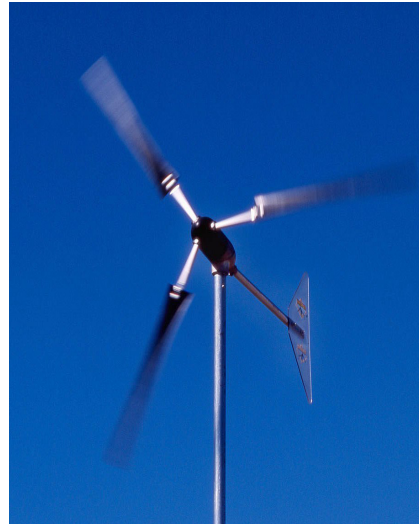
San Francisco has a policy to encourage the installation of on-site, renewable energy systems, such as small wind generators. Currently, there are two general types of wind generators available. One uses scoops or blades to spin on a vertical axis, shown at far left below. It is probable that birds would perceive this type as a solid barrier even when it's rotating.

The second design uses a propeller-like rotor to spin on a horizontal axis. This is a small-scale version of the most common generator used on large-scale wind farms throughout the world.

While it is unreasonable to believe that these small urban systems would cause the annihilation of birds such as the well-known disaster at Altamont, California (see discussion on adjacent page) a certain amount of caution is prudent in the absence of established scientific research. The Planning Department has exercised that caution by allowing a more widespread installation of vertical axis machines, and limiting locations of horizontal axis, open-bladed generators to areas that would seem to be less densely populated by birds, especially migrants and juveniles.

The only clear way at present to learn whether small urban wind generators will harm birds is to allow the installation of a few, and to monitor the interactions with animals, if any. For this reason, all approvals for wind generators have conditions that require monitoring and reporting of bird and bat strikes. These reporting protocols are in accord with recommendations made by the Mayor's Task Force on Urban Wind.

As of June 2011, none of the approved windmills have submitted monitoring information to the Planning Department.



LEFT: Horizontal axis and vertical access wind generators that do not present a solid appearance are discouraged, especially adjacent to water or open space larger than 2 acres.



ABOVE: Vertical axis wind generators may vary in appearance. Blades that present a solid appearance (such as the left image) are encouraged.



Golden Eagle photo by Eddie Bartley.

Spotlight on the Altamont Windmills

Golden Eagles, named for the golden feathering at the nape of their necks, are majestic raptors that can be found throughout most of California and much of the northern hemisphere. California protects these magnificent raptors as both a species of special concern and a fully protected species, making it illegal to harm or kill them. Golden Eagles are protected under the Bald and Golden Eagle Protection Act. Golden Eagles are also protected under the Federal Migratory Bird Treaty Act, which forbids the killing (even unintentional killing) of any migratory bird.

Golden Eagles typically prefer open terrain, such as the rolling hills of eastern Alameda County. The open grasslands, scattered oaks, and bountiful prey make this area ideal habitat for Golden Eagles. Today, it supports the highest-known density of Golden Eagle nesting territories in the world.

Conservation Issues

Every year, an estimated 75 to 110 Golden Eagles are killed by the wind turbines in the Altamont Pass Wind Resource Area (APWRA). Some lose their wings, others are decapitated, and still others are cut in half. The lethal turbines have been reduced from 6,000 to less than 5,000 which are still arrayed across 50,000 acres of rolling hills in northeastern Alameda and southeastern Contra Costa counties. The APWRA, built in the 1980s, was one of the first wind energy sites in the U.S. At the time, no one knew how deadly the turbines could be for birds. Few would now deny, however, that Altamont Pass is probably the worst site ever chosen for a wind energy project. According to a 2004 California Energy Commission (CEC) report, as many as 380 Burrowing Owls (also a state-designated species of special concern), 300 Red-tailed Hawks, and 333 American Kestrels are killed every year. The most recent study by Dr. Shawn Smallwood, a member of the Altamont Scientific Review Committee estimates that approximately 7,600-9,300 birds are killed here each year. (Smallwood 2010)



In 2004, Golden Gate Audubon joined four other Bay Area Audubon chapters (Marin Audubon, Santa Clara Valley Audubon, Mt. Diablo Audubon, and Ohlone Audubon) and Center for Biological Diversity and Californians for Renewable Energy (CARE) in challenging the renewal permits for this facility. The Audubon/CARE CEQA lawsuit settled, with terms requiring the wind companies to reduce avian mortality by 50% within three years and to complete a comprehensive conservation plan to govern operations in the Altamont.

Reducing the kill entirely may not be possible as long as the wind turbines continue to operate at Altamont. However, significant progress can be made. The CEC estimates that wind operators could reduce bird deaths by as much as 50 percent within three years—the goal stated in the settlement agreement—and by up to 85 percent within six years—all without reducing energy output significantly at APWRA. These reductions could be achieved by removing turbines that are the most deadly to birds and shutting down the turbines during four winter months when winds are the least productive for wind energy, combined with some additional measures. Anecdotal data indicate there may not be a substantial improvement for Golden Eagles and there may actually be much higher mortality for bats.

Golden Gate Audubon is working with Alameda County to ensure that the permits granted to the wind industry achieve reductions in bird mortality, in addition to other requirements that will help address the unacceptable bird kills at Altamont Pass over the long term. Pursuit of clean energy technology, when done correctly, can help reduce the risk of global warming and its impacts on wildlife.

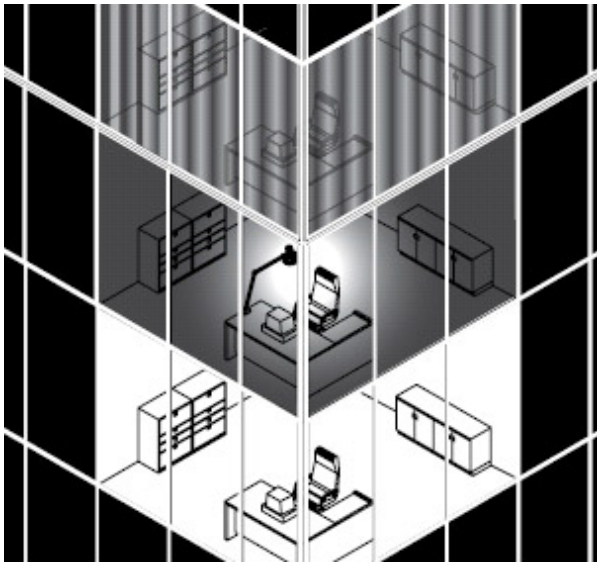
Written by the Golden Gate Audubon Society.

LIGHTING TREATMENTS

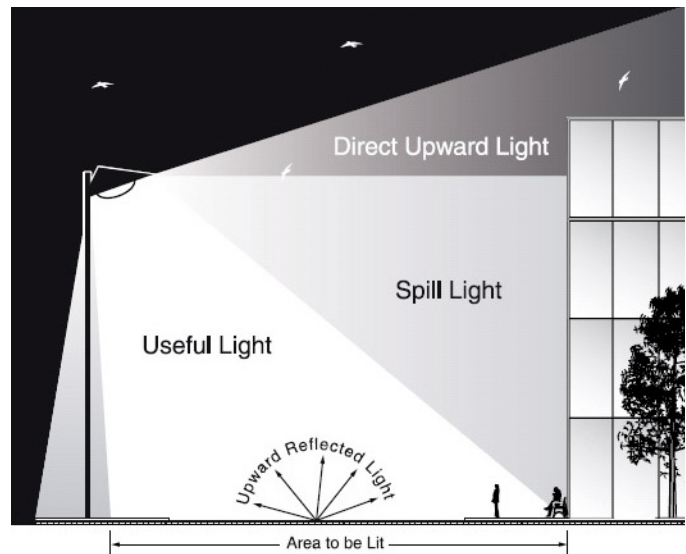
While the ultimate cause of collisions are invisible surfaces, light pollution can increase risk. Night migrants depend on starlight for navigation, and brightly-lit buildings can draw them off course. Once within the aura of bright lights, they can become disoriented, and may collide with buildings, or may fly in circles around the light source, until they drop to the ground from exhaustion, having expended their limited energy reserves needed to complete their migration. Architects and building owners should collaborate to address the two key lighting issues: design and operation.

Eliminating unnecessary lighting is one of the easiest ways to reduce bird collisions, with the added advantage of saving energy and expense. As much as possible, lights should be controlled by motion

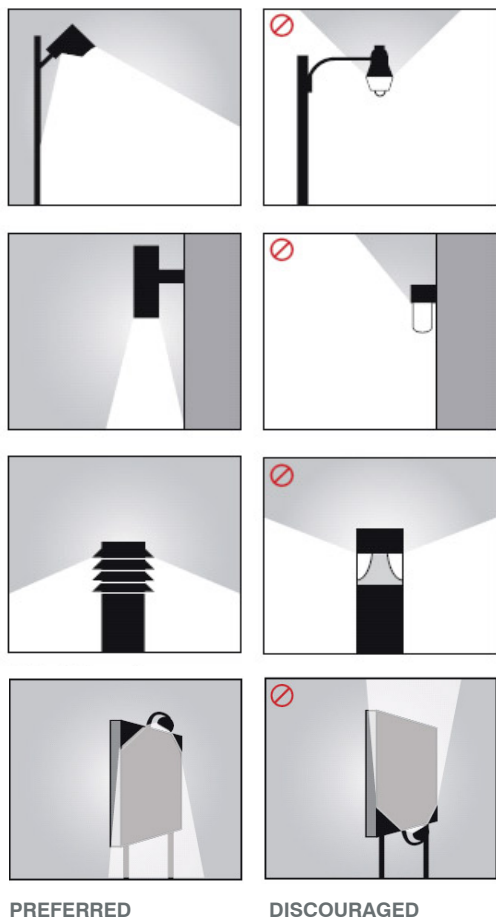
sensors. Building operations can be managed to eliminate or reduce night lighting from activities near windows. Minimize perimeter and vanity lighting and consider filters or special bulbs to reduce red wavelengths where lighting is necessary. Strobe lighting is preferable to steady burning lights. Exterior light fixtures should be designed to minimize light escaping upwards. Motion detectors are thought to provide better security than steady burning lights, because lights turning on provide a signal, and because steady lights create predictable shadows.



REDUCE: UNNECESSARY INTERIOR LIGHT



REDUCE: UNNECESSARY EXTERIOR LIGHT



PREFERRED

DISCOURAGED

City of Toronto

LIGHTING DESIGN

The built environment should be designed to minimize light pollution including: light trespass, over-illumination, glare, light clutter, and skyglow while using bird-friendly lighting colors when possible (*Poot et al. 2008*).

- **Avoid uplighting**
- **Avoid light spillage**
- **Use green and blue lights when possible**

LIGHTING OPERATIONS

Unneeded interior and exterior lighting should be turned off from dusk to dawn during migrations: February 15 through May 31 and August 15 through November 30. Rooms where interior lighting is used at night should have window coverings that adequately block light transmission, and motion sensors or controls to extinguish lights in unoccupied spaces. Event searchlights are strongly discouraged during these times.

Several cities, including San Francisco, have launched citywide efforts to reduce unneeded lighting during migration. In addition to saving birds, these “Lights Out” programs save a considerable amount of energy and reduce pollution by reducing carbon dioxide emissions. The savings for a building can be significant. One participating municipal building in the Toronto Lights Out program reported annual energy reductions worth more than \$200,000 in 2006.

Lights Out requires that building owners, managers, and tenants work together to ensure that all unnecessary lighting is turned off during Lights Out dates and times (during spring and fall migration February 15th through May 31st and August 15th through November 30th). Best practices for lighting include turning off unnecessary lights after dusk and leaving the lights off until dawn. If inside lights are needed, window coverings such as blinds or drapes should be closed.

The Tribune of Lights / Copyright (c) 2010 John de Guzman: <http://johndeguzman.com>

LEFT: The white streaks are the time-exposed paths of birds attracted to, dazed by, and circling within the columns of light. Many succumbed to exhaustion and perished without completing their migration. Lights Out policies do not allow the use of searchlights during the Spring and Autumn migration periods for this reason.

III. Bird-Safe Requirements and Guidelines Across North America

When discussing human-caused threats to birds, the US Fish and Wildlife Service reports “that the incidental, accidental or unintentional take of migratory birds is not permitted by the Service and is a criminal violation of the Migratory Bird Treaty Act” but that the Service first attempts to work with industries and individuals who unintentionally cause bird death before pursuing criminal prosecution (*US Fish and Wildlife Service 2002*).

Several major cities are addressing the issue through local legislation.

- **Chicago:** In July of 2008, Cook County, Illinois, which includes Chicago, passed an ordinance requiring that all new buildings and major renovations incorporate design elements to reduce the likelihood of bird collisions. This ordinance established Chicago as the first major jurisdiction with a requirement for bird-safe elements. Other nearby local jurisdictions, such as Highland Park, are also following suit with new bird-safe architecture requirements.
- **Toronto:** This effort has evolved from voluntary ratings and incentive program to bird-friendly construction guidelines that became mandatory at the beginning of 2010. The bird-friendly guidelines were integrated into Toronto’s local Green Development Standard, required for nearly all new construction. In addition, the City of Toronto offers an acknowledgement program that offers incentives to developers and building owners and managers who implement the Bird-Friendly Development Guidelines. Once a development has been verified by City staff as “bird-friendly”, the City provides the owner with an original print by a local artist and the building may be marketed as “bird-friendly.” A bird-friendly designation could give these buildings a competitive advantage by identifying these features to an increasingly environmentally concerned and aware marketplace. Toronto also has had great success with

their Lights Out program which has been in effect since 2006. (See images on page 36.)

- **Minnesota:** As of 2009, the State of Minnesota requires that all state owned and leased buildings turn off their lights at night during migration. As of June, 2011, bird-safe building criteria are being developed for incorporation into the State of Minnesota Sustainable Building Guidelines.
- **Michigan:** Since 2006, the governor of Michigan has issued an annual proclamation, declaring “Safe Passage” dates during spring and fall migration, when buildings managers are asked to turn off lights at night.
- **Nationally:** In April 2011, Congressman Mike Quigley introduced a bill (*H.R. 1643*) into the U.S. Congress that, if passed, would mandate bird-friendly construction practices for federal buildings.



NY Bird-Safe Building Guidelines

IV. San Francisco's Bird-Safe Requirements

It is clear from studies done throughout the U.S. and Canada that certain building and landscape configurations can be especially dangerous to birds. These sites present heightened risks for collisions and necessitate requirements, which are included in Section 139 of the Planning Code, Standards for Bird-Safe Buildings.



NY Bird-Safe Building Guidelines

The following bird-safe measures apply in San Francisco.

Structure and/or siting characteristics that present the greatest risk to birds are called "bird-hazards" and include:

- 1 Location-related hazards
- 2 Building feature-related hazards

1 Requirements for Location-Related Hazards

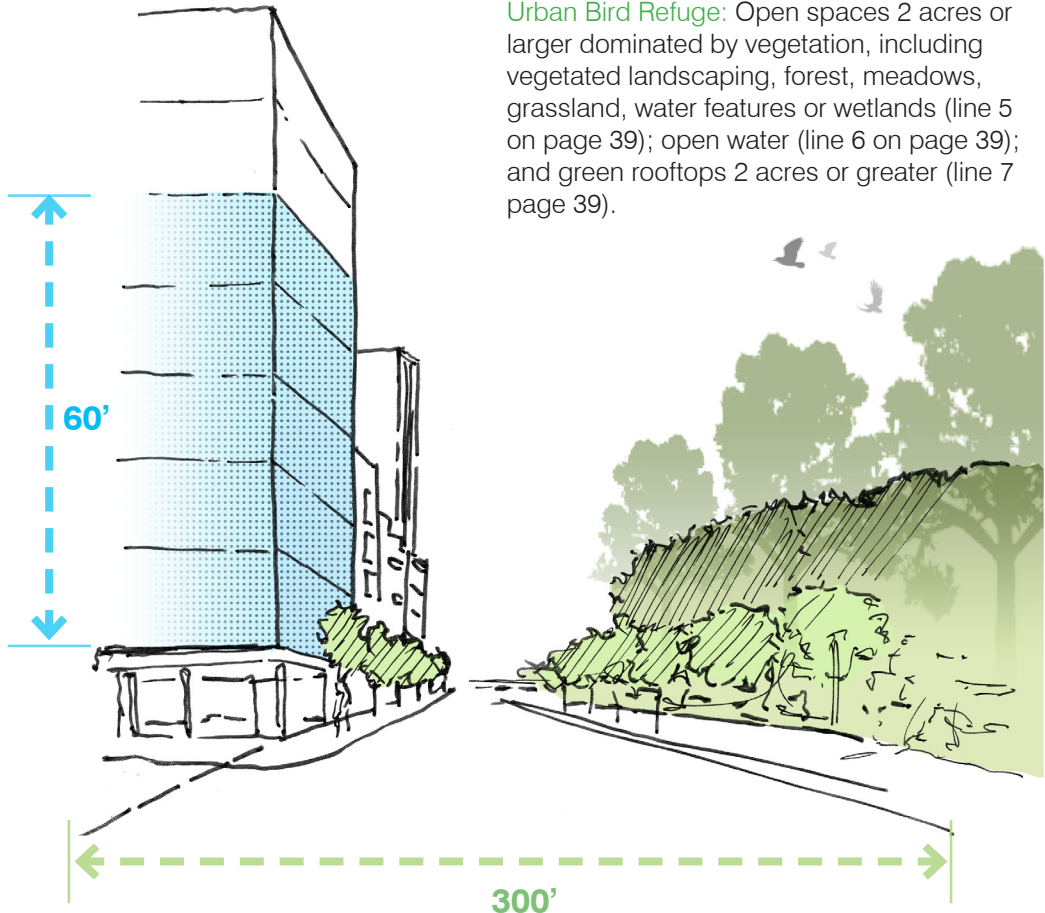
What is a “location-related” hazard?

Location-Related Hazard: Buildings located inside of, or within a clear flight path of less than 300 feet from an Urban Bird Refuge (defined below) require treatment when:

- New buildings are constructed;
- Additions are made to existing buildings (Note: only the new construction will require treatment); or
- Existing buildings replace 50% or more of the glazing within the “bird collision zone” on the façade(s) facing the Urban Bird Refuge.

Bird Collision

Zone: The portion of buildings most likely to sustain bird strikes. This area begins at grade and extends upwards for 60 feet. This zone also applies to glass façades directly adjacent to large landscaped roofs (two acres or larger) and extending upward 60 feet from the level of the subject roof.



Urban Bird Refuge: Open spaces 2 acres or larger dominated by vegetation, including vegetated landscaping, forest, meadows, grassland, water features or wetlands (line 5 on page 39); open water (line 6 on page 39); and green rooftops 2 acres or greater (line 7 page 39).

What requirements apply to a “location-related” hazard?

Treatment of Location-Related Hazards. Buildings located inside of or within a clear flight path from an Urban Bird Refuge shall implement the following applicable treatments for façades facing an Urban Bird Refuge.

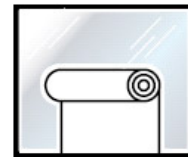
- **Façade Treatments:** Bird-Safe Glazing Treatment is required such that the Bird Collision Zone consists of no more than 10% untreated glazing. Building owners are encouraged to concentrate permitted transparent glazing on the ground floor and lobby entrances to enhance visual interest for pedestrians.
- **Lighting Design:** Minimal lighting shall be used. Lighting shall be shielded. No uplighting shall be used. No event searchlights should be permitted for the property.
- **Wind Generators:** Sites must not feature horizontal access windmills or vertical access wind generators that do not appear solid.



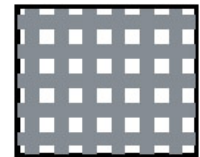
ABOVE: The California Academy of Sciences uses external screens 24 hours per day during spring and fall migration to reduce bird/building collisions.



Solution: Visual Noise



Solution: Use of plastic films, diachroic coatings and tints on facade



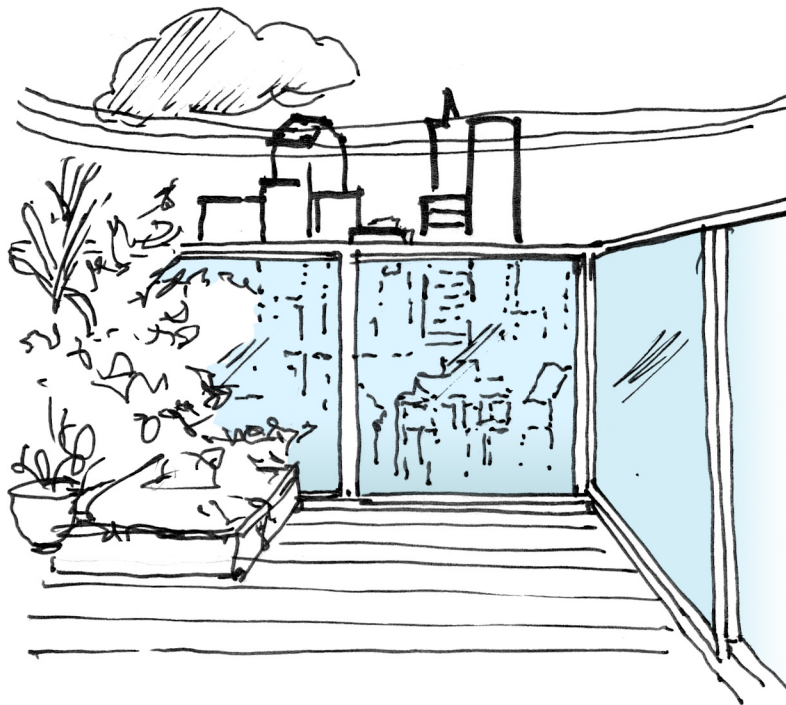
Solution: Screen / scrim / fritting

2 Requirements for Feature-Related Hazards

What is a “feature-related” hazard?

Building Feature-Related Hazard: Certain potential bird traps are hazardous enough to necessitate treatment, regardless of building location. A building-specific hazard is a feature that creates hazards for birds in flight unrelated to the location of the building. Building feature-related hazards include free-standing clear glass walls, skywalks, greenhouses on rooftops, and balconies that have unbroken glazed segments 24 square feet and larger in size. (See citywide bird-safe checklist, lines 19-22 on page 39). These features require treatment when:

- New buildings are constructed;
- Additions are made to existing buildings (Note: only the new construction will require treatment).



LEFT: These windows are an example of a feature-related hazard.

What requirements apply to a “featured-related” hazard?

Treatment of Feature-Related Hazards - Regardless of whether the site is located inside or adjacent to an Urban Bird Refuge, 100% of building feature-related hazards shall be treated.



LEFT: A transparent glass skywalk poses a “feature-related” hazard.

Image courtesy of Lightsoutindy.org

LEFT: This skywalk was intentionally treated with fritting by the Indiana Museum to avoid creating a “feature-related” hazard.



RIGHT: The fritting maintains transparency for pedestrians.



Images courtesy of Lightsoutindy.org

The Details: Exceptions and Specifications

Exceptions: Certain exceptions apply to the aforementioned controls.

1) Treatment of Historic Buildings. Treatment of replacement glass façades for structures designated as City landmarks or within landmark districts pursuant to Article 10 of the Planning Code, or any building Category I-IV or Category V within a Conservation District pursuant to Article 11 of the Planning Code, shall conform to Secretary of Interior Standards for Rehabilitation of Historic Properties. Reversible treatment methods such as netting, glass films, grates, and screens are recommended. Netting or any other method demonstrated to protect historic buildings from pest species that meets the Specifications for Bird-Safe Glazing Treatment stated above may also be used to fulfill the requirement.

2) Exceptions for Treatment of Location-Related Hazards for Residential Buildings within R-Zoned Districts.

→ **Limited Glass Façade:** Residential buildings less than 45 feet in height within R-Districts that have an exposed façade comprised of less than 50% glass are exempt from new or replacement glazing treatments, but must comply with feature-related and wind generation requirements below.

→ **Substantial Glass Façade:** Residential buildings within R-Districts that are less than 45 feet in height but have a façade with a surface area of more than 50% glass, must provide glazing treatments for location-related hazards such that 95% of all large, unbroken glazed segments that are 24 square feet and larger in size are treated.

3) Other Waivers or Modifications by the Zoning Administrator. The Zoning Administrator may either waive requirements for Location-Related Hazards or Feature-Related Hazards or modify the requirements to allow equivalent Bird-Safe Glazing Treatments based upon the recommendation of a qualified biologist.



A New York volunteer examining a window casualty.

Photo courtesy NY Audubon

Glazing Treatment Specifications: Bird-safe glazing treatment may include fritting, netting, permanent stencils, frosted glass, exterior screens, physical grids placed on the exterior of glazing or UV patterns visible to birds. To qualify as Bird-Safe Glazing Treatment, vertical elements of the window patterns should be at least 1/4 inch wide at a minimum spacing of 4 inches, or have horizontal elements at least 1/8 inch wide at a maximum spacing of 2 inches (*Klem 2009*.)

V. Recommended Actions and Bird-Safe Stewardship

Public Education and Outreach Partnerships

The Planning Department will partner with the Golden Gate Audubon Society to conduct outreach on bird-safe building practices. Staff will work collaboratively to increase awareness of bird/building issues, and disseminate educational materials on design and treatment options. A public education effort will proactively increase awareness of the issues and strive to make bird safety practices a part of the construction lexicon within this highly urbanized area. Developers, architects, planners, property owners, businesses, city residents and youth groups are encouraged to contact the Department about educational programs. Curriculum will include education about the standards for bird-safe buildings and exploring citizen involvement of monitoring bird/building collisions as well as general advocacy for bird conservation.



Photo courtesy Jessica Weinberg. <http://www.jessicaweinberg.com/>

Building Owner Bird-Safe Stewardship

Owners of new buildings and buildings proposing major renovations with a façade of greater than 50% glass are encouraged to evaluate their building against the Bird-Safe Building Checklist (pages 38-39) and provide future tenants with a copy of this document. Although requirements only apply to the most hazardous conditions, building owners and architects can become more aware of potential hazards and treatments. With the support of building owners who help educate future tenants, the people of San Francisco would become better educated about ways to enhance bird safety.

Building owners can help make their buildings safer by evaluating the risks of their buildings and retrofitting buildings with known hazards. Engaging in conservation measures outlined in this guide and granting access to collision monitoring groups help to address the issue and increase our understanding.

Encouraged Treatments

The following treatments are encouraged to enhance bird safety, in addition to meeting requirements:

- **Expanding treatment outside of the Bird Collision Zone:** bird-safe treatments on building façades above the minimum height requirements.
- **Other window treatments:** latticework, grilles and other devices, both functional and decorative, outside the glass or integrated into the glass spacing requirements;
- **Placement of trees or tall shrubs:** should be located directly adjacent to glazing (with 3 feet) to slow birds down on approach, or placed far enough away to avoid reflecting canopies in the glazing.

Building Tenant Education

Some of the most effective treatments for making buildings bird-safe are those that require the cooperation of building owners and tenants. For this reason, the City should continue to use and should expand a “carrot”-based system to widely encourage participation in bird-safe efforts. San Francisco’s existing Lights Out for Birds Program seeks to educate residents and provide recognition of voluntary bird-safe measures. Since 2008, the City has urged building owners and managers to turn off unnecessary interior and exterior lights. Twenty-two of the City’s forty-four tallest buildings have been asked to participate.

To raise bird-awareness of building occupants, building owners may supply tenants with copies of this booklet. Building occupants can help make buildings bird-safe through the following good practices:

- Interior plants should be moved so as not to be visible from the outside.
- Consider limiting nighttime building use by combining motion operated light sensor with daytime cleaning services. This combination will reduce light pollution and increase energy conservation.
- Where interior lighting is used at night, window coverings should be closed to block light transmission adequately.
- Consider seasonal migration needs. Unneeded interior and exterior lighting should be turned off from dusk to dawn from February 15 through May 31 AND August 15 through November 30.



Greater Scaup

Photo by Robert Lewis



Western Sandpiper

Photo by Robert Lewis

Bird/Building Collision Monitoring

Project Safe Flight in Manhattan has collected and documented over 4,000 dead and injured birds since 1997. In 2009 the Chicago Bird Collision monitors recovered more than 6,000 dead or injured migratory birds from more than 100 different species. In Toronto, Fatal Light Awareness Program (FLAP) volunteers patrol Toronto's downtown core in the early morning hours rescuing live birds and collecting the dead ones since 1993. In the summer of 2010, the Oregon Zoo funded a six-week sunrise study of Portland's newest and tallest buildings where volunteers collected dead and injured birds. Audubon Minnesota has collected over 3000 birds of 110 species from monitoring efforts between 2007-2011.

Aside from regular collection of injured or dead migratory birds throughout the City by San Francisco Animal Care and Control staff and bird group volunteers, the only large bird/building monitoring program currently being conducted by the California Academy of Sciences, read more on page 14 (*Flannery 2011*). Additional regular monitoring of the hazard in San Francisco is needed to help in the evaluation of local conditions and refinement of appropriate controls. Collaborations between building owners and bird-research groups should be encouraged to help increase our understanding of San Francisco's unique conditions. With the publication of this document, the City calls for more local research to help achieve the goal of better characterizing the problem on a local level, as well as for testing of new bird-safe technologies that could be utilized along with those that are already available.



Photo by Eddie Barley

A 2008 San Francisco pilot study discovered a Green Heron in the Downtown area. Further monitoring may reveal other unexpected neotropical migrants passing through the City's dense core.

CONTACT THE SAN FRANCISCO BIRD-STRIKE HOTLINE TO REPORT BIRD-STRIKES

Report injured birds found outside of buildings by emailing safebirds@goldengateaudubon.org or by calling **Golden Gate Audubon Society** at **(510) 843-6551** with the following information:

Date:

Time:

Address including cross streets:

Location details:

Species of bird, if known:

Male or female, if known:

Adult or juvenile bird, if known:

Condition of bird:

Did you see or hear the collision?

If so, please provide a description:

Weather:

Please email a photo of the bird and building, if possible. If the bird appears to be injured, call **San Francisco Animal Care and Control** at **(415) 554-9400** and record the date and time you called.

Lights Out for Birds San Francisco

The Golden Gate Audubon Society, Pacific Gas and Electric Company and the San Francisco Department of the Environment administer “Lights Out for Birds – San Francisco.” This voluntary program helps building owners, managers and tenants save energy and money while protecting migratory birds. Lights Out for Birds asks participants to turn off building lights during the bird migration (February through May and August through November each year).

“Participants in the Lights Out for Birds program can save natural resources, money, and birds by turning off lighting after dusk each evening and leaving lights off until dawn,” said Mike Lynes, Conservation Director for Golden Gate Audubon. “Over 250 species of birds migrate through San Francisco in the spring and fall, and many that migrate at night can become confused by the City’s lights and collide with tall buildings and towers. The Lights Out for Birds program can reduce bird deaths while cutting energy costs and saving participants thousands of dollars each year.”

The North American Bird Conservation Initiative—a joint effort of federal agencies and nonprofit conservation organizations—released the “2009 State of the Birds” in which it reported that the majority of migratory birds in North America are suffering significant population declines due to human-induced causes, including habitat loss and collisions. In addition to window treatments to reduce daytime collisions, effective Lights Out programs can help stem these population declines.

Participants in the Lights Out for Birds program also gain significant financial benefits. Building operators and tenants have reported significant savings on energy bills as a result of participation—one business in Toronto reported a savings of \$200,000 in 2006. In 2010 Mayor Gavin Newsom announced energy efficient retrofit funding for 2,000 small to mid-sized businesses and 500 homes. By installing timers or motion detectors and turning off unnecessary lights, building owners and operators can significantly reduce their energy bill. Reduced energy consumption decreases overall greenhouse gas emissions, which is essential in the effort to combat climate change.

San Francisco was one of the first cities to implement a Lights Out program in 2008. Now over 21 cities in the US and Canada have a Lights Out program. Conservationists hope that the program extends to every major city in North America, to save birds, energy and money.



Photos of 2008 Lights Out Toronto by Dick Hemingway via WWF-Canada.



Toronto’s established Lights Out Program creates a dramatic change in the skyline appearance. As San Francisco’s program spreads we should be able to see seasonal changes as our skyline lights up in non-migratory months and dims down during migration.

Building owners, managers and tenants interested in an energy evaluation and current rebates should contact the San Francisco Department of the Environment or a PG&E representative. For more information on how to participate in the program and to learn about local bird populations and how to help, contact the Golden Gate Audubon Society at (510) 843-6551.

PARTICIPANTS IN SAN FRANCISCO LIGHTS OUT FOR BIRDS

101 California Street
 Allsteel Inc.
 Barker Pacific Group, Inc.
 New Resource Bank
 Pacific Gas and Electric Company
 San Francisco Department of the Environment
 Tishman Speyer



ABOVE: Rescued thrush resting safely in the hand of a Chicago Bird Collision Monitor volunteer.

Photo: Willowbrook Wildlife Center
<http://www.chicagoaudubon.org/imgcas/21-02/rescuedthrush.jpg>

Beyond Requirements: Voluntary Treatments and Acknowledgment

San Francisco building owners who implement Bird-Safe treatments are strongly encouraged to seek recognition under the City's new Bird-Safe Building Certification and Acknowledgement Program. Buildings which avoid creating hazards or implement bird-safe treatments as identified in this document would be acknowledged by the City and could be marketed as such. Three levels of certification will be offered:

Bird-Safe Building:

The building meets the minimum conditions for bird-safety. This level focuses on ensuring "bird-hazards" and "bird traps" are not created or are remedied with bird-safe treatments.

Select Bird-Safe Building:

The building meets all of the minimum requirements; commits to "lights out" practices during migratory seasons; reduces untreated glazing beyond the requirements; and commits to educating future building occupants.

Sterling Bird-Safe Building:

This is the highest level of Bird-Safe Building certification possible. The building meets all of the conditions of the other certification levels, plus the building reduces the amount of glass on the façade, avoids or treats additional hazards—beyond the requirements, and features year-round best management practices for lighting.

The program will be administered by the Planning Department. Buildings that qualify will be awarded plaques and public recognition through the City's website and outreach materials. To see if your building qualifies for Bird-Safe Certification, fill out the attached Bird-Safe Building Checklist on pages 38-39 of this document and contact the Planning Department at (415) 558-6377.

VI. Bird-Safe Building Checklist

Use of this checklist: This checklist serves three purposes: 1) assessing risk factors and determining risks which must be addressed by the requirements; 2) increasing awareness of risk factors that are de minimis and don't require treatment; and 3) evaluating buildings for certification as a bird-safe building.

1

REQUIREMENTS FOR THE MOST HAZARDOUS CONDITIONS: The conditions that warrant special concern in San Francisco are designated by red-shaded boxes. These red boxes indicate prohibited building conditions or conditions which are only permitted if the glazing is installed with bird-safe glazing treatments. If the project combines a glass façade with a high-risk location ("location-related hazard", line 5-7), glazing treatments will be required for the façade(s) such that the amount of untreated glazing is reduced to less than 10% for the façade facing the landscaping, forest, meadow, grassland, wetland, or water. If a project creates a new bird-trap or "feature-related hazard" (lines 19-22) or remodels an existing feature-related hazard, bird-safe treatment will be required.

2

INCREASING AWARENESS: Owners of buildings with a façade of greater than 50% glass (lines 9 -10) are strongly encouraged to evaluate the building against the checklist and to help provide future tenants with copies of this guide. Use this checklist to evaluate design strategies for building new structures and retrofitting existing buildings throughout the City. This checklist summarizes conditions that could contribute to bird mortality and will help to identify the potential risks. Interested neighborhood groups and trade associations are encouraged to contact the Department for suggestions on how to proactively increase awareness of the issue and make bird safety practices a part of the construction lexicon.

3

VOLUNTARY RATINGS: Project sponsors interested in submitting a project for "Bird-Safe Certification" may use this form. The Department will partner with local artists to produce appropriate artwork and/or plaques to acknowledge those who actively seek to reduce bird collisions on their property. The ratings system will create tiers certification to recognize projects that meet minimum requirements as well as those projects that exceed the requirements.

RISK ASSESSMENT LEGEND:

Potential Risk Factors:

These shade indicate factors that may present hazards to birds. Note: actual risks vary greatly depending upon building and site-specific variables.

GRAY: This shade indicates potential increased risk.
NOTE: *The net assessment of total risk varies with the combination of building factors. While every building in San Francisco will present some element of risk to birds, only combinations with "red" boxes present a risk level necessitating bird-safe treatments.*

RED: This shade indicates prohibited conditions or conditions which are prohibited unless bird-safe treatment is applied.

CERTIFICATION LEGEND:

By checking all of the boxes for one (or more) of these colors on the Bird-Safe Building Checklist (page 39), a building owner is eligible to apply to the Planning Department for Bird-Safe Building Certification.

Bird-Safe Building Certification and Acknowledgement:

Buildings which avoid creating hazards or which enhance bird safety with treatments identified as effective in this document would be acknowledged by the City and could be marketed as such. This document proposes three levels of certification by the City. Certification is determined by applying the checklist criteria.

Yellow:
Bird-Safe Building
The building meets the minimum conditions for bird-safety. This level focuses on ensuring "bird-hazards" and "bird traps" are not created or are remedied with bird-safe treatments.

Green:
Select Bird-Safe Building
The building meets all of the minimum requirements; commits to "lights out" practices during migratory seasons; reduces untreated glazing beyond the requirements; and commits to educating future building occupants.

Blue:
Sterling Bird-Safe Building
This is the highest level of Bird-Safe Building certification possible. The building meets all of the conditions of the other certification levels, plus the building reduces the amount of glass on the façade, avoids or treats additional hazards—beyond the requirements, and features year-round best management practices for lighting.

BIRD-SAFE BUILDING CHECKLIST

Using the key on page 38, complete this checklist to evaluate potential bird-hazards or eligibility for Bird-Safe Building Certification.

	QUESTION	YES	NO
MACRO-SETTING (PAGE 12, 16)	1 Is the structure located within a major migratory route? (All of San Francisco is on the Pacific Flyway)		
	2 Is the location proximate to a migratory stopover destination? (Within 1/4 mile from Golden Gate Park, Lake Merced or the Presidio)		
	3 Is the structure location in a fog-prone area? (Within 1/2 mile from the ocean or bay)		
MICRO-SETTING (LOCATION-RELATED HAZARD) (PAGES 13, 16, 28-29)	4 Is the structure located such that large windows greater than 24 square feet will be opposite of, or will reflect interlocking tree canopies?		
	5 Is the structure inside of, or within a distance of 300 feet from an open space 2 acres or larger dominated by vegetation? (Requires treatment of glazing, see page 28)		
	6 Is the structure located on, or within 300 feet from water, water features, or wetlands? (Requires treatment of glazing, see page 28)		
	7 Does the structure feature an above ground or rooftop vegetated area two acres or greater in size? (Requires treatment of glazing, see page 29)		
GLAZING QUANTITY (PAGE 8)	8 Is the overall quantity of glazing as a percentage of façade: (Risk increases with amount of glazing)	Less than 10% More than 50%? (Residential Buildings in R-Districts must treat 95% of unbroken glazed segments 24 square feet or greater in size if within 300 feet of an Urban Bird Refuge.)	
	9 Will the glazing be replaced?	More than 50% glazing to be replaced on an existing bird hazard (including both feature-related hazards as described in lines 19-22 and location-related hazard as described in lines 4-7)? (Requires treatment see pages 29 and 31.)	
GLAZING QUALITY (PAGE 6, 7)	10 Is the quality of the glass best described as:	Transparent (If so, remove indoor bird-attractions visible from outside the windows.)	
	11	Reflective (If so, keep visible light reflectance low (between 10-20%) and consider what will reflect in the windows. Note: Some bird-safe glazing such as fritting and UV spectrum glass may have higher reflectivity that is visible to birds.)	
	12	Mirrored or visible light reflectance exceeding 30%. (Prohibited by Planning Code.)	
GLAZING TREATMENTS (PAGE 18-21)	13 Is the building's glass treated with bird-safe treatments such that the "collision zone" contains no more than 10% untreated glazing for identified "location-related hazards" (lines 4-7) and such that 100% of the glazing on "feature-related hazards" (lines 19-22) is treated?		
	14 Is the building's glass treated for required "bird hazards" (as described in line 13) <i>and</i> such that no more than 5% of the collision zone (lower 60') glazing is untreated but not for the entire building?		
	15 Is the building glazing treated (as described above in lines 14 and 15) <i>and</i> such that no more than 5% of the glazing on the exposed façade is left untreated?		
BUILDING FAÇADE GENERAL (PAGE 8, 13)	16 Is the building façade well-articulated (as opposed to flat in appearance)?		
	17 Is the building's fenestration broken with mullions or other treatments?		
	18 Does the building use unbroken glass at lower levels?		
BUILDING FEATURE-RELATED HAZARDS AND BIRD TRAPS (PAGE 8, 30-31)	19 Does the structure contain a "feature-related" hazard or potential "bird trap" such as:	Free standing clear-glass walls, greenhouse or other clear barriers on rooftops or balconies? (Prohibited unless the glazing is treated with bird-safe applications.)	
	20	Free standing clear-glass landscape feature or bus shelters? (Prohibited unless the glazing is treated with bird-safe applications.)	
	21	Glazed passageways or lobbies with clear sight lines through the building broken only by glazing?	
	22	Transparent building corners?	
LIGHTING DESIGN (PAGE 10, 25)	23 Does the structure, signage or landscaping feature uplighting? (Prohibited within 300 feet of an Urban Bird Refuge)		
	24 Does the structure minimize light spillage and maximize light shielding?		
	25 Does the structure use interior "lights-out" motion sensors?		
	26 Is night lighting minimized to levels needed for security?		
	27 Does the structure use decorative red-colored lighting?		
LIGHTING OPERATIONS (PAGE 12, 24-25)	28 Will the building participate in San Francisco Lights Out during the migration seasons? (February 15-May 31 and August 15- November 30th) To achieve "sterling" certification the building must participate in year-round best management practices for lighting.		
OTHER BUILDING ELEMENTS (PAGE 23)	29 Does the structure feature rooftop antennae or guy wires?		
	30 Does the structure feature horizontal access wind generators or non-solid blades? (Prohibited within 300 feet of an Urban Bird Refuge)		
CONSENT (PAGE 34)	31 Does the building owner agree to distribute San Francisco's Bird-Safe Building Standards to future tenants?		

Authorized Signature

X _____

Date: _____



From City of Toronto Green Development Standard: "Bird-Friendly Development Guidelines."

Some of the birds killed by building collisions and collected during one migration season in Toronto's Financial District.

“A vast and growing amount of evidence supports the interpretation that, except for habitat destruction, collisions with clear and reflective sheet glass and plastic cause the deaths of more birds than any other human-related avian mortality factor. From published estimates, an upper level of 1 billion annual kills in the U.S. alone is likely conservative; the worldwide toll is expected to be billions.

Birds in general act as if sheet glass and plastic in the form of windows and noise barriers are invisible to them. Casualties die from head trauma after leaving a perch from as little as one meter away in an attempt to reach habitat seen through, or reflected in, clear and tinted panes... Glass is an indiscriminate killer, taking the fittest individuals of species of special concern as well as the common and abundant.”

- DANIEL KLEM, JR.

Leading researcher of bird/building collisions as presented at Fourth International Partners in Flight Conference, 2008.

NOTES / LITERARY CITATIONS

1. Banks, Richard. 1979. *Human Related Mortality of Birds in The United States*. United States Department of the Interior Fish and Wildlife Service. Special Scientific Report--Wildlife No. 215.
2. Bower, Joe. 2000. *The Dark Side of Light*. Audubon. Vol. 102(2): 92-94.
3. DeVore, Sheryl. April 13, 2011. Migratory Birds Run Afoul of Green Buildings. *Chicago Tribune*.
4. Eisenberg, Anne. 2010 *Warning to Birds: All-Glass Buildings Ahead*. *New York Times*. Aug. 28, 2010.
5. Flannery, Maureen. 2011. California Academy of Sciences. personal correspondence and interview.
6. Gelb, Yigal; Nicole Delacretaz. 2009. *Windows and Vegetation: Primary Factors in Manhattan Bird Collisions*. *Northeastern Naturalist*. 16(3):455-470.
7. Hager, Stephen, B., Heidi Trudell, Kelly J. McKay, Stephanie M. Crandall, and Lance Mayer. 2008. *Bird Density and Mortality at Windows*. *The Wilson Journal of Ornithology*. 120(3):550-564.
8. Kay, Jane. February 23, 2009. *San Francisco is a Bird Watcher's Paradise*. *San Francisco Chronicle*.
9. Knee, Karen. August 3, 2009. *Fatal Impact*. *The Philadelphia Inquirer*.
10. Klem, D. Jr. February, 1990. *Collisions Between Birds and Windows: Mortality and Prevention*. *Journal of Field Ornithology*. 61(1): 120-128.
11. Klem, D. Jr. February, 2009. *Avian Mortality At Windows: The Second Largest Human Source of Bird Mortality on Earth*. *Proceedings of the Fourth International Partners in Flight Conference: Tundra to Tropics*. 244-251.
12. Klem, D. Jr., Christopher Farmer, Nicole Delacretaz, Yigal Gelb, Peter Saenger. 2009. *Architectural and Landscape Risk Factors Associated with Bird-Glass Collisions in an Urban Environment*. *The Wilson Journal of Ornithology*. 121(1):126-134.
12. Klem, D. Jr. 2011. Personal correspondence and interview.
13. Kousky, Carolyn. 2004. *A Building Less Bright*. *Terrain Issue 15*. Retrieved from: <http://www.terrain.org/articles/15/Kousky.htm> on 9/15/10.
14. Longcore, Travis, Ph.D. et al. February, 2005. *Scientific Basis to Establish Policy Regulating Communications Towers to Protect Migratory Birds*. WT Docket No. 03-187, Federal Communications Commission Notice of Inquiry.
15. McAdams, E. J. December 2003. *Rebuilding Lower Manhattan: A Bird's-Eye View*. Presented by New York City Audubon to the Lower Manhattan Development Corporation. Retrieved from: www.yigalgelb.com/site/pdf/ProjectSafeFlightBackgroundInfo.doc on 4/22/11.
16. O'Connell, Timothy. Fall 2001. *Avian Window Strike Mortality at a Suburban Office Park*. *The Raven*. Vol. 72(2): 141-149.
17. Ogden, Lesley, J. September, 1996. *Collision Course: The Hazards of Lighted Structures and Windows to Migrating Birds*. A Special Report for the World Wildlife Fund Canada and the Fatal Light Awareness Program.
18. Poot, H., B. J. Ens, H. de Vries, M. A. H. Donners, M. R. Wernand, and J. M. Marquenie. 2008. *Green Light for Nocturnally Migrating Birds*. *Ecology and Society* 13(2): 47. Retrieved from: <http://www.ecologyandsociety.org/vol13/iss2/art47/> on 9/15/10.
19. Scriber, Brad. 2008. "Light Pollution", "Ecological Light Pollution", "Got Milky Way", "Getting Back in Black", "Nighttime Savings", and "Lights and Safety". *Nat. Geographic Magazine* (October 17, 2008). Retrieved from: http://ngm.nationalgeographic.com/geopedia/Light_Pollution on 9/28/10.
20. Sheppard, Christine. 2010. American Bird Conservancy. Personal correspondence and interview.
21. Sheppard, Christine. 2011. American Bird Conservancy. Email correspondence.
22. Smallwood, K. Shawn. 2010. *Fatality Rates in the Altamont Pass Wind Resource Area 1998-2009*. Retrieved at: http://www.altamontsrc.org/alt_doc/p145_smallwood_fatality_monitoring_results_12_31_09.pdf on 9/29/10.
23. United States Fish and Wildlife Service. January 2002. *Migratory Bird Mortality: Many Human-Caused Threats Afflict Our Bird Populations*.
24. Weeden, Noreen. October 2010. Golden Gate Audubon Society. Personal correspondence.



SAN FRANCISCO
PLANNING
DEPARTMENT

FOR MORE INFORMATION: Call or visit the San Francisco Planning Department

Central Reception
1650 Mission Street, Suite 400
San Francisco CA 94103-2479

TEL: **415.558.6378**
FAX: **415.558.6409**
WEB: **<http://www.sfplanning.org>**

Planning Information Center (PIC)
1660 Mission Street, First Floor
San Francisco CA 94103-2479

TEL: **415.558.6377**

*Planning staff are available by phone and at the PIC counter.
No appointment is necessary.*

1 [Zoning – Establishing Standards for Bird-Safe Buildings]

2
3 **Ordinance amending the San Francisco Planning Code by adding Section 139 to**
4 **establish Standards for Bird-Safe Buildings to help reduce injury and mortality in birds**
5 **caused by certain types of new construction, replacement facades, and building**
6 **features; amending Section 145.1 to allow for exceptions to transparency and**
7 **fenestration requirements to meet Standards for Bird-Safe Buildings; and adopting**
8 **findings, including environmental findings and findings of consistency with the**
9 **General Plan and Planning Code Section 101.1.**

10 NOTE: Additions are *single-underline italics Times New Roman*;
11 deletions are ~~*strike-through italics Times New Roman*~~.
12 Board amendment additions are double-underlined;
Board amendment deletions are ~~strikethrough normal~~.

13 Be it ordained by the People of the City and County of San Francisco:

14 Section 1. Findings. The Board of Supervisors of the City and County of San
15 Francisco (hereinafter "Board") hereby finds and determines that:

16 (a) General Findings.

17 (1) Over thirty years of research has proven certain building features, such as
18 location near open space, reflective/transparent glass, lighting, and other design elements, to
19 be biologically significant in causing death or injury to birds. Studies have determined that
20 annual bird fatalities in North America from window collisions may be as high as 1 billion birds
21 per year and that building collisions are a threat of significant magnitude to affect the viability
22 of bird populations, leading to local, regional, and national declines.

23 (2) The majority of these deaths are foreseeable and avoidable through a variety of
24 different building design modifications including, but not limited to, the use of fritting, frosting,
25 screens, architectural features (overhangs, louvers, awnings), ultra-violet glass, angling and

1 film and art treatment of glass, and lighting modifications. It is anticipated that more options
2 will continue to be developed through new research and creative design.

3 (3) San Francisco has almost 400 different bird species, located along the Pacific
4 Flyway, and has numerous open spaces. Bird groups, local animal control agencies, and
5 building owners have noted bird strikes at San Francisco buildings.

6 (4) On October 8, 2009, the San Francisco Planning Commission (hereinafter
7 "Commission") requested that the Department present information on Bird-Friendly Building
8 Standards as developed by cities within North America and in other countries. Information
9 was provided at this hearing by the Department and the American Bird Conservancy.

10 (5) On February 5, 2009, the Commission received information from the
11 Department on San Francisco's "Lights Out for Birds" program in response to a
12 Commissioner's request.

13 (4) In October 2010, the Department released a draft document entitled "Standards
14 for Bird-Safe Buildings" that summarizes major research, presents design recommendations,
15 and proposes a three-tiered approach to the problem that includes: 1) establishment of
16 building requirements for the most hazardous conditions; 2) use of an educational checklist to
17 educate project sponsors and their future tenants on potential hazards; and 3) creation and
18 expansion of voluntary programs to encourage more bird-safe practices, including
19 acknowledging those who pursue certification through a new program for "bird-safe building"
20 recognition.

21 (5) On October 14, 2010, the Commission conducted a duly noticed public hearing
22 at a regularly scheduled meeting to consider the draft document titled "Standards for Bird-
23 Safe Buildings." The Commission heard and considered testimony presented to it at the
24 public hearing and further considered written materials and oral testimony presented on behalf
25 of the applicant, the Department, and other interested parties.

1 (6) At the October 14, 2010 hearing, the Commission directed the Department to
2 collect public comment through the end of 2010, consider revisions to the document based on
3 the comments received, and return in 2011 with a draft Ordinance for the Commission's
4 consideration that would implement proposed controls and adopt a final "Standards for Bird-
5 Safe Buildings" document.

6 (b) General Plan, Planning Code and Environmental Findings.

7 (1) At a duly noticed public hearing on _____, in Resolution No.
8 _____, the Commission adopted the policy document titled "Standards for Bird-Safe
9 Buildings Spring 2011" and recommended approval of the draft Ordinance that would amend
10 the Planning Code to implement this Commission policy. A copy of said Resolution is on file
11 with the Clerk of the Board of Supervisors in File No. _____ and is incorporated
12 herein by reference.

13 (2) The Planning Commission in Resolution No. _____ found that the
14 proposed Planning Code amendments contained in this Ordinance were, on balance,
15 consistent with the City's General Plan and with Planning Code Section 101.1(b). In addition,
16 the Commission recommended that the Board adopt the proposed Planning Code
17 amendments. The Board finds that the proposed Planning Code amendments contained in
18 this Ordinance are consistent with the City's General Plan and with Planning Code Section
19 101.1(b) for the reasons set forth in said Resolution.

20 (3) Pursuant to Planning Code Section 302, the Board finds that the proposed
21 Ordinance will serve the public necessity, convenience and welfare for the reasons set forth in
22 Planning Commission Resolution No. _____, which reasons are incorporated herein
23 by reference as though fully set forth.

24 (4) Environmental Findings. The Planning Department has determined that the
25 actions contemplated in this Ordinance are in compliance with the California Environmental

1 Quality Act (California Public Resources Code Sections 21000 et seq.). Said determination is
2 on file with the Clerk of the Board of Supervisors in File No. _____ and is
3 incorporated herein by reference.

4 Section 2. The San Francisco Planning Code is hereby amended by adding Section
5 139, to read as follows:

6 **SEC. 139. STANDARDS FOR BIRD-SAFE BUILDINGS.**

7 *(a) Purpose. The purpose of this Section is to establish Bird-Safe Standards for new*
8 *building construction and replacement facades to reduce bird mortality from circumstances that are*
9 *known to pose a high risk to birds and are considered to be "bird hazards". The two circumstances*
10 *regulated by this Section are 1) location-related hazards, where the siting of a structure creates*
11 *increased risk to birds and 2) feature-related hazards, which may create increased risk to birds*
12 *regardless of where the structure is located. Location-related hazards are created by structures that*
13 *are near or adjacent to large open spaces and/or water. When structures are located in such an area,*
14 *the portion of the structure most likely to sustain bird-strikes requires façade treatments. Even if a*
15 *structure is not located near a locational hazard, particular building features also may create a hazard*
16 *for birds. Structures that create such a feature-related hazard are required to treat all of the feature-*
17 *related hazard. While these controls do not apply retroactively, the purpose of these controls is to*
18 *ensure that new construction that is bird-safe and to decrease existing bird-hazards over time.*

19 *(b) Definitions.*

20 *(1) Bird-Safe Glazing Treatment. Bird-Safe Glazing Treatment may include fritting,*
21 *netting, permanent stencils, frosted glass, exterior screens, physical grids placed on the exterior of*
22 *glazing or UV patterns visible to birds. To qualify as Bird-Safe Glazing Treatment vertical elements of*
23 *the window patterns shall be at least 1/4 inch wide at a minimum spacing of 4 inches, and horizontal*
24 *elements at least 1/8 inch wide at a maximum spacing of 2 inches. No qualified glazing shall have a*
25 *visible light reflectance exceeding 10%.*

1 (2) **Bird Hazard.** Specific circumstances that create a hazard for birds due to either the
2 location of the building or due to specific building features that increase the risk of bird-building
3 collisions as described under (c) below.

4 (c) **Controls.** The following Bird-Safe Standards shall apply to: 1) new construction, 2)
5 building additions that create a Bird Hazard, or 3) the replacement of 50% or more of the glazing on
6 an existing Bird Hazard. Additions to existing buildings subject to this subsection are required only to
7 treat the new building addition. Bird Hazards consist of: 1) location-related hazards and 2) feature-
8 related hazards and the standards specified below shall apply to structures that present these hazards.

9 (1) **Location-Related Standards.** These standards apply to buildings located inside of open
10 spaces two acres and larger dominated by vegetation, including vegetated landscaping, forest,
11 meadows, grassland, or wetlands, or open water (hereinafter an Urban Bird Refuge). These standards
12 also shall apply to buildings less than 300 feet from an Urban Bird Refuge if such buildings are in an
13 unobstructed line to the refuge. The standards are as follows:

14 (A) **Facade Requirement.** Bird-Safe Glazing Treatment is required such that the
15 Bird Collision Zone, as defined below, facing the Urban Bird Refuge consists of no more than 10%
16 untreated glazing. Building owners are encouraged to concentrate permitted transparent glazing on the
17 ground floor and lobby entrances to enhance visual interest for pedestrians. The Bird Collision Zone
18 shall mean the portion of buildings most likely to sustain bird-strikes from local and migrant birds in
19 search of food and shelter and includes:

20 (i) The building façade beginning at grade and extending upwards for 60 feet, or
21 (ii) Glass facades directly adjacent to landscaped roofs 2 acres or larger and
22 extending upwards 60 feet from the level of the subject roof.

23 (B) **Lighting.** Minimal lighting shall be used. Lighting shall be shielded. No
24 uplighting shall be used. Event searchlights are be prohibited on property subject to these controls.

1 (C) **Wind Generation.** Wind generators in this area shall be vertical access
2 generators that present a solid blade appearance.

3 (2) **Feature-Related Standards.** Feature-related hazards include free-standing glass walls,
4 wind barriers, skywalks, balconies, and greenhouses on rooftops that have unbroken glazed segments
5 24 square feet and larger in size. Feature-related hazards can occur throughout the City. Any
6 structure that contains these elements shall treat 100% of the glazing on Feature-Specific hazards.

7 (3) **Exceptions.** Certain exceptions apply to this Section as set forth below.

8 (A) **Certain Exceptions for Location-Related Standards to be Applied to**
9 **Residential Buildings within R-Districts.**

10 (i) **Limited Glass Façade.** Residential buildings within R-Districts that are less than
11 45 feet in height and have an exposed façade comprised of less than 50% glass are exempt from new or
12 replacement façade glazing requirements included in Section 139(c)(1) Location-Related Standards.

13 (ii) **Substantial Glass Façade.** Residential buildings that are less than 45 feet in
14 height but have a façade with surface area composed of more than 50% glass, shall provide glazing
15 treatments as described in Section 139(c)(1)(A) for 95% of all large, unbroken glazed segments that
16 are 24 square feet and larger.

17 (B) **General Exceptions for Historic Buildings.** Treatment of replacement glass
18 facades for structures designated as City landmarks or within landmark districts pursuant to Article 10
19 of the Planning Code, or any building Category I-IV or Category V within a Conservation District
20 pursuant to Article 11 of the Planning Code, shall conform to Secretary of Interior Standards for
21 Rehabilitation of Historic Properties. Reversible treatment methods such as netting, glass films, grates,
22 and screens are recommended. Netting or any other method demonstrated to protect historic buildings
23 from pest species that meets the Specifications for Bird-Safe Glazing Treatment stated above also may
24 be used to fulfill the requirement.

1 (C) **General Waivers and Modifications.** The Zoning Administrator may either
2 waive the requirements contained within Section 139(c)(1) and Section 139(c)(2) or modify such
3 requirements to allow equivalent Bird-Safe Glazing Treatments upon the recommendation of a
4 qualified biologist.

5 Section 3. The San Francisco Planning Code is hereby amended by amending Section
6 145.1, to read as follows:

7 SEC. 145.1. **STREET FRONTAGES, NEIGHBORHOOD COMMERCIAL,**
8 **RESIDENTIAL-COMMERCIAL, COMMERCIAL, AND MIXED USE DISTRICTS.**

9 (a) **Purpose.** The purpose of this Section is to preserve, enhance and promote
10 attractive, clearly defined street frontages that are pedestrian-oriented, fine-grained, and
11 which are appropriate and compatible with the buildings and uses in Neighborhood
12 Commercial Districts, Commercial Districts, Residential-Commercial Districts, Mixed Use
13 Districts.

14 (b) **Definitions.**

15 (1) **Development lot.** A "development lot" shall mean:

16 (A) Any lot containing a proposal for new construction, or

17 (B) Building alterations which would increase the gross square footage of a
18 structure by 20 percent or more, or

19 (C) In a building containing parking, a change of more than 50 percent of the
20 building's gross floor area to or from residential uses, excluding residential accessory off-
21 street parking.

22 (2) **Active use.** An "active use", shall mean any principal, conditional, or accessory
23 use which by its nature does not require non-transparent walls facing a public street or
24 involves the storage of goods or vehicles.

1 (A) Residential uses are considered active uses above the ground floor; on
2 the ground floor, residential uses are considered active uses only if more than 50 percent of
3 the linear residential street frontage at the ground level features walk-up dwelling units which
4 provide direct, individual pedestrian access to a public sidewalk, and are consistent with the
5 Ground Floor Residential Design Guidelines, as adopted and periodically amended by the
6 Planning Commission.

7 (B) Spaces accessory to residential uses, such as fitness or community
8 rooms, are considered active uses only if they meet the intent of this section and have access
9 directly to the public sidewalk or street.

10 (C) Building lobbies are considered active uses, so long as they do not
11 exceed 40 feet or 25% of building frontage, whichever is larger.

12 (D) Public Uses described in 790.80 and 890.80 are considered active uses
13 except utility installations.

14 (c) **Controls.** The following requirements shall generally apply, except for those
15 controls listed in subsections (1) Above Grade Parking Setback and (4) Ground Floor Ceiling
16 Height, which only apply to a "development lot" as defined above.

17 In NC-S Districts, the applicable frontage shall be the primary facade(s) which contain
18 customer entrances to commercial spaces.

19 (1) **Above-Grade Parking Setback.** Off-street parking at street grade on a
20 development lot must be set back at least 25 feet on the ground floor and at least 15 feet on
21 floors above, from any facade facing a street at least 30 feet in width. Parking above the
22 ground level shall be entirely screened from all public rights-of-way in a manner that
23 accentuates ground floor uses, minimizes mechanical features and is in keeping with the
24 overall massing and architectural vocabulary of the building. In C-3 Districts, parking above
25 the ground level, where permitted, shall also be designed to facilitate conversion to other uses

1 by maintaining level floors and a clear ceiling height of nine feet or equal to that of the
2 adjacent street-fronting active uses, whichever is greater. Removable parking ramps are
3 excluded from this requirement.

4 The following shall apply to projects subject to this section:

5 (A) when only one parking space is permitted, if a space is proposed it must
6 be within the first 25 feet of the building;

7 (B) when two or more parking spaces are proposed, one space may be
8 within the first 25 feet of the building;

9 (C) when three or more parking spaces are proposed, all parking spaces
10 must be set back at least 25 feet from the front of the development.

11 (2) **Parking and Loading Entrances.** No more than one-third of the width or 20
12 feet, whichever is less, of any given street frontage of a new or altered structure parallel to
13 and facing a street shall be devoted to parking and loading ingress or egress. In NC-S
14 Districts, no more than one-third or 50 feet, whichever is less, of each lot frontage shall be
15 devoted to ingress/egress of parking. Street-facing garage structures and garage doors may
16 not extend closer to the street than a primary building facade unless the garage structure and
17 garage door are consistent with the features listed in Section 136 of this Code. The total
18 street frontage dedicated to parking and loading access should be minimized, and combining
19 entrances for off-street parking with those for off-street loading is encouraged. The placement
20 of parking and loading entrances should minimize interference with street-fronting active uses
21 and with the movement of pedestrians, cyclists, public transit, and autos. Entrances to off-
22 street parking shall be located at least six feet from a lot corner located at the intersection of
23 two public rights-of-way. Off-street parking and loading entrances should minimize the loss of
24 on-street parking and loading spaces. Off-street parking and loading are also subject to the
25 provisions of Section 155 of this Code. In C-3 Districts, so as not to preclude the conversion

1 of parking space to other uses in the future, parking at the ground-level shall not be sloped,
2 and the floor shall be aligned as closely as possible to sidewalk level along the principal
3 pedestrian frontage and/or to those of the street-fronting commercial spaces and shall have a
4 minimum clear ceiling height of 14 feet or equal to that of street-fronting commercial spaces,
5 whichever is greater. Removable parking ramps are excluded from this requirement.

6 (3) **Active Uses Required.** With the exception of space allowed for parking and
7 loading access, building egress, and access to mechanical systems, space for active uses as
8 defined in Subsection (b)(2) and permitted by the specific district in which it is located shall be
9 provided within the first 25 feet of building depth on the ground floor and 15 feet on floors
10 above from any facade facing a street at least 30 feet in width. Building systems including
11 mechanical, electrical, and plumbing features may be exempted from this requirement by the
12 Zoning Administrator only in instances where those features are provided in such a fashion as
13 to not negatively impact the quality of the ground floor space.

14 (4) **Ground Floor Ceiling Height.** Unless otherwise established elsewhere in this
15 Code:

16 (A) Ground floor non-residential uses in UMU Districts shall have a minimum
17 floor-to-floor height of 17 feet, as measured from grade.

18 (B) Ground floor non-residential uses in all C-3, C-M, NCT, DTR, Chinatown
19 Mixed Use, RSD, SLR, SLI, SSO, MUG, MUR, and MUO Districts shall have a minimum floor-
20 to-floor height of 14 feet, as measured from grade.

21 (C) Ground floor non-residential uses in all RC districts, C-2 districts, RED
22 districts, and NC districts other than NCT, shall have a minimum floor-to-floor height of 14
23 feet, as measured from grade except in 40-foot and 50-foot height districts, where buildings
24 shall have a minimum floor-to-floor height of 10 feet.

1 (5) **Street-Facing Ground-Level Spaces.** The floors of street-fronting interior
2 spaces housing non-residential active uses and lobbies shall be as close as possible to the
3 level of the adjacent sidewalk at the principal entrance to these spaces. Street-facing ground-
4 level spaces housing non-residential active uses in hotels, office buildings, shopping centers,
5 and other large buildings shall open directly onto the street, rather than solely into lobbies and
6 interior spaces of the buildings. Such required street-facing entrances shall remain open to
7 the public during business hours.

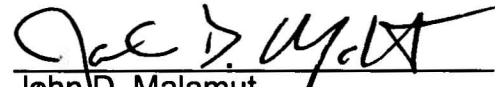
8 (6) **Transparency and Fenestration.** Frontages with active uses that are not
9 residential or PDR must be fenestrated with transparent windows and doorways for no less
10 than 60 percent of the street frontage at the ground level and allow visibility to the inside of the
11 building. The use of dark or mirrored glass shall not count towards the required transparent
12 area. Buildings located inside of, or within an unobstructed line of less than 300 feet of an Urban Bird
13 Refuge, as defined in Section 139(c)(1), shall follow glazing requirements within Section 139(c) of this
14 Code.

15 (7) **Gates, Railings, and Grillwork.** Any decorative railings or grillwork, other than
16 wire mesh, which is placed in front of or behind ground floor windows, shall be at least 75
17 percent open to perpendicular view. Rolling or sliding security gates shall consist of open
18 grillwork rather than solid material, so as to provide visual interest to pedestrians when the
19 gates are closed, and to permit light to pass through mostly unobstructed. Gates, when both
20 open and folded or rolled as well as the gate mechanism, shall be recessed within, or laid
21 flush with, the building facade.

22 (d) **Exceptions for Historic Buildings.** Specific street frontage requirements in this
23 Section may be modified or waived by the Planning Commission for structures designated as
24 landmarks, significant or contributory buildings within a historic district, or buildings of merit
25 when the Historic Preservation Commission advises that complying with specific street


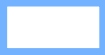
1 frontage requirements would adversely affect the landmark, significant, contributory, or
2 meritorious character of the structure, or that modification or waiver would enhance the
3 economic feasibility of preservation of the landmark or structure.

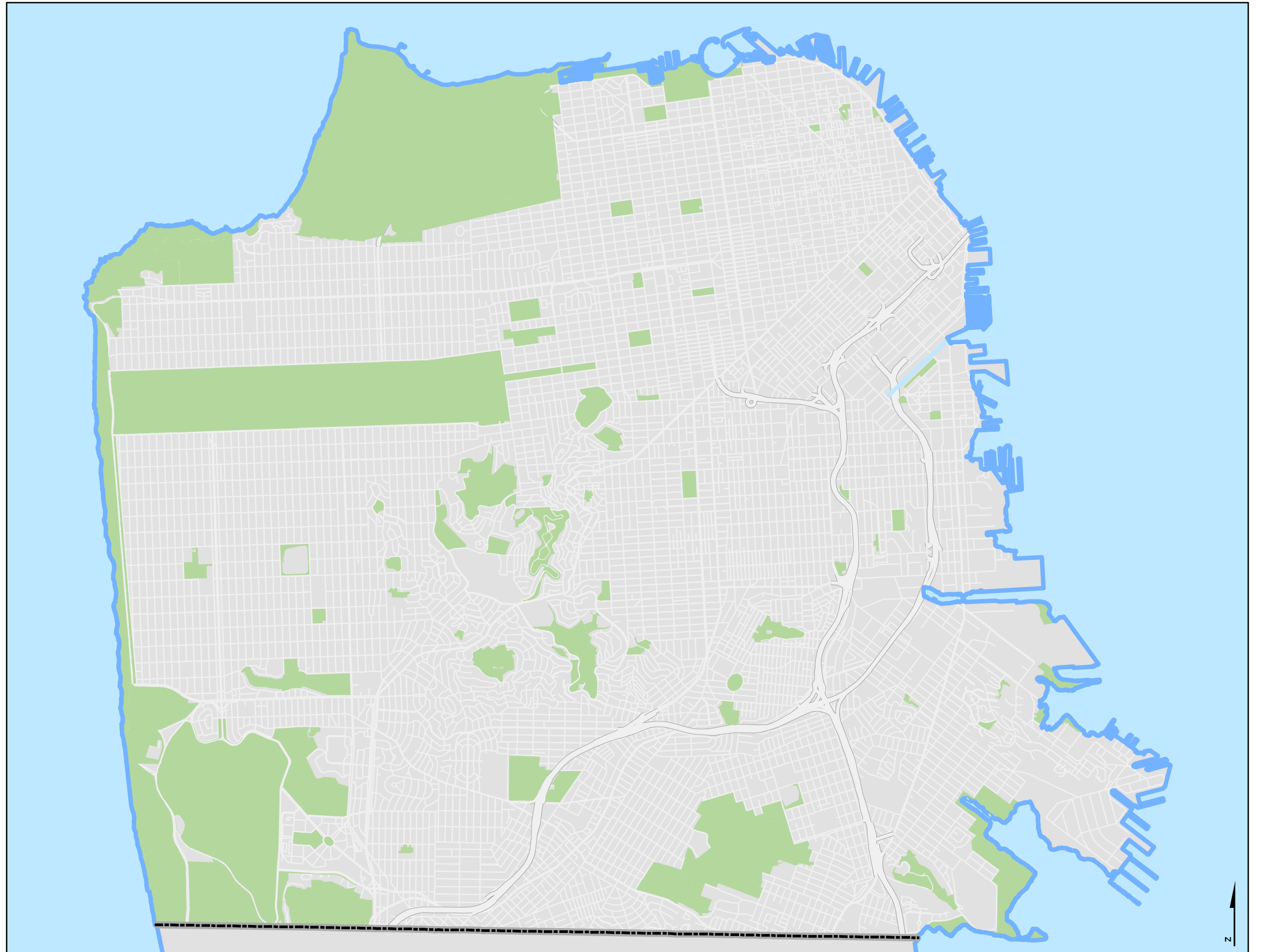
4
5
6 APPROVED AS TO FORM:
DENNIS J. HERRERA, City Attorney

7
8 By: 
9 John D. Malamut
Deputy City Attorney

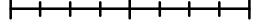
DRAFT Bird-Safe Building Standards

*Urban Bird Refuge

-  Open Spaces Greater Than 2 Acres in Size
-  San Francisco Shoreline



0 0.25 0.5 1 Mile



* Planning staff will need to verify if the subject parcels are within an unobstructed line from open space or water to determine if Section 139(c)1 Planning Code controls apply. This map is subject to change.