

A historical black and white photograph of a street in Eureka Valley. The street is filled with vintage cars from the 1930s and 40s. On the left, a tall vertical sign reads 'CELESTRO'. On the right, a large sign reads 'BANK OF A'. In the background, a hillside is visible with more buildings. The text 'Eureka Valley Historic Context Statement' is overlaid in the center of the image.

Eureka Valley Historic Context Statement

Eureka Valley Neighborhood Association
July 10, 2017

HISTORIC CONTEXT STATEMENTS: A DEFINITION

A **historic context statement** is a document that identifies the important themes relevant to the city's history and the development of its built environment. It establishes periods of historical significance for each of the important themes, while identifying significant property types.

CITYWIDE HISTORIC CONTEXT STATEMENT FOR LGBTQ HISTORY IN SAN FRANCISCO

Donna J. Graves & Shayne E. Watson



Prepared for the City & County of San Francisco
March 2016

HISTORIC CONTEXT STATEMENTS: PURPOSE

- To place built resources in the appropriate context
- To highlight trends and patterns
- To provide a framework for historic properties



Photos: Bayanihan Community Center at 1010 Mission Street (below) and a mural of the same name painted by Cece Carpio in 2013 (above)

The Bayanihan Community Center (1010 Mission St.) was identified in the *SF Filipino Heritage Addendum* to the *SOMA Historic Context Statement*.

HISTORIC CONTEXT STATEMENTS: ORGANIZATION & ESSENTIAL COMPONENTS

- Organized around specific geography, time period, and theme
- Present historical information in narrative format
- Identify common property types
- Define eligibility criteria for listing on historic registers
- Recommend preservation priorities and next steps



Japantown YWCA/Nihonmachi Little Friends Building (1830 Sutter St.) was identified in Japantown Historic Context Statement

HISTORIC CONTEXT STATEMENTS: HOW ARE THEY USED?

- To identify potential landmarks, historic districts and cultural resources
- To facilitate designation of properties
- Required for individual landmark nominations and historic resource evaluations
- Can be prepared with historic resource surveys

Neighborhood Commercial Buildings Historic Context Statement 1865-1965



PENDING APPROVAL BY THE PLANNING DEPARTMENT'S SURVEY ADVISORS GROUP

Not for Public Review

September 30, 2013

San Francisco City & County
Planning Department

Eureka Valley Historic Context Statement

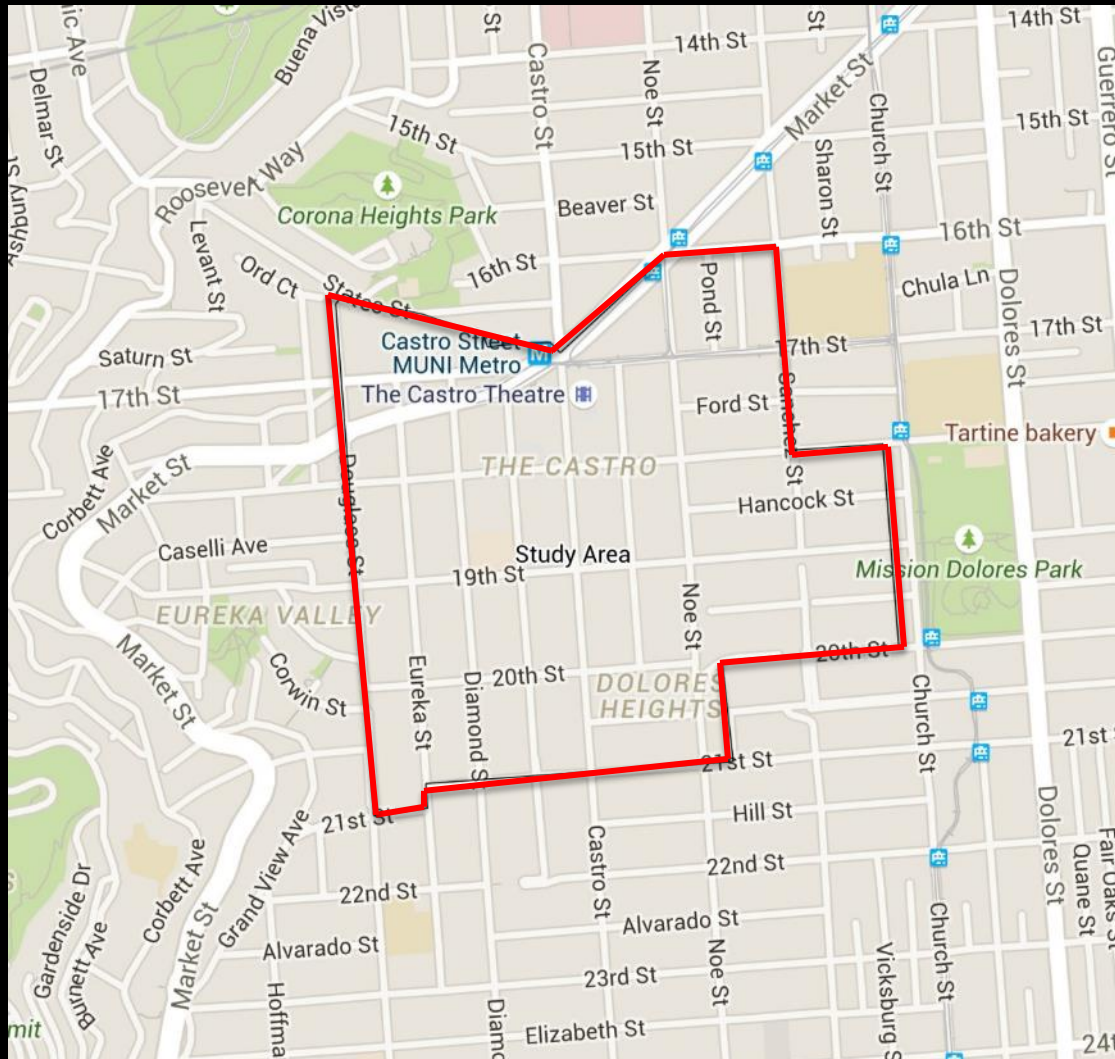
Eureka Valley Historic Context Statement



DRAFT

Eureka Valley Neighborhood Association
Elaine B. Stiles
May 2017

Eureka Valley Study Area



Study Period: Pre-European Settlement to 1974

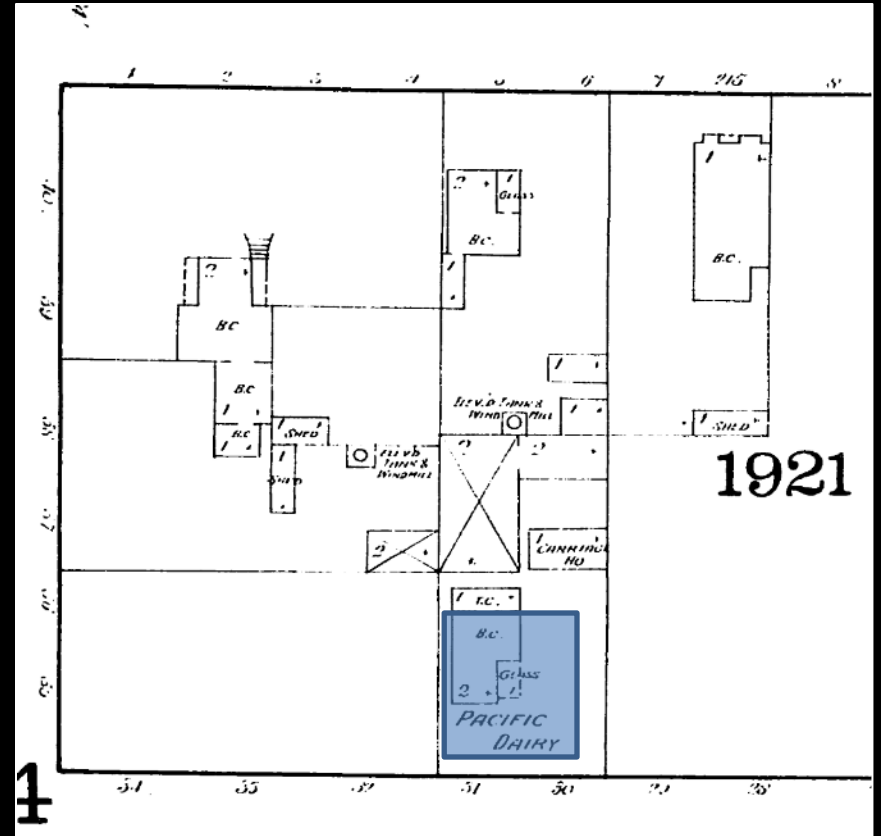
Eureka Valley Historic Contexts

- Native American Settlement and Presence
- Land Division and Settlement (Spanish, Mexican, American)
- Agricultural Production
- Industrial Production
- Transportation
- Residential Development
- Commercial Development
- Religious Communities
- Social and Political Life
- Civic and Institutional Development
- Immigrant and Ethnic Communities
- Urban Planning
- Development as an LGBTQ Enclave

Agriculture

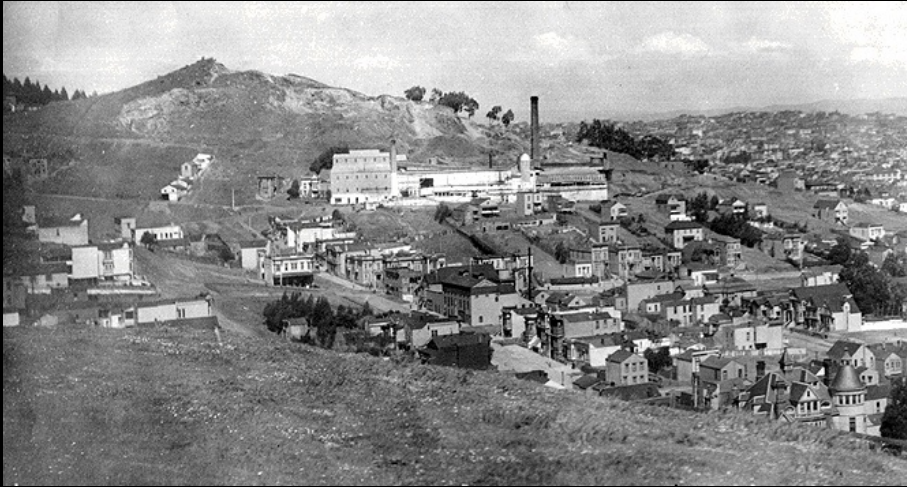


Dwelling associated with former Pacific Dairy, 225-227 Eureka St., ca. 1880



Pacific Dairy 1886 Sanborn Map

Industry



View of Gray Brothers quarry and San Francisco Brick Factory on Corona Heights, looking NE, ca. 1900

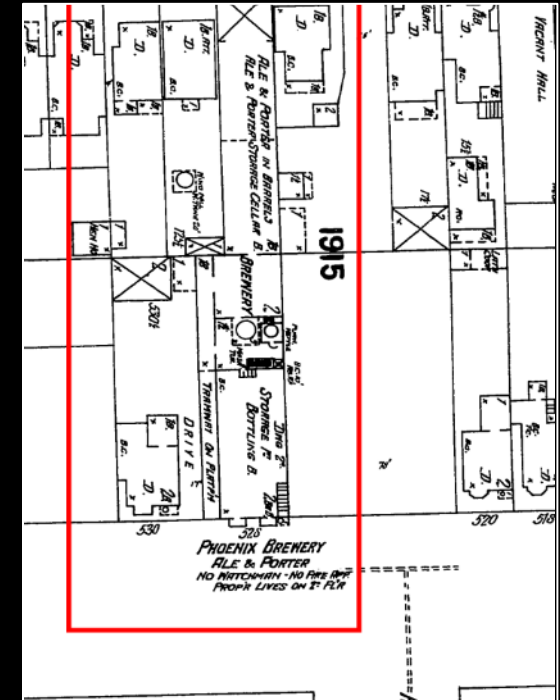


New York Soap Company works on Diamond Street, ca. 1890. (Date written on photo inaccurate.)

Industry

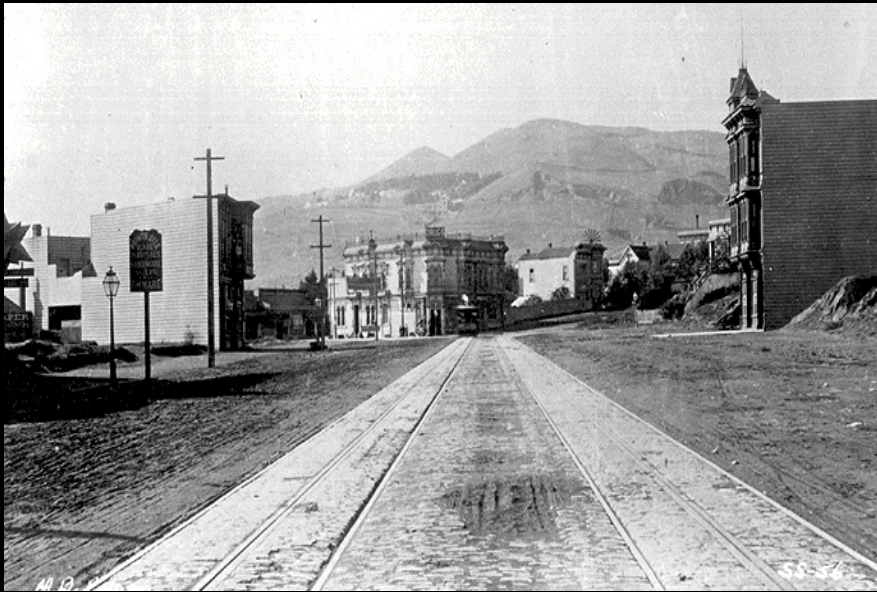


Kirby Residence, 550 Noe Street and Kirby/Phoenix Brewery Building, 552 Noe Street



Phoenix Brewery in 1900

Transportation



Upper Market Street, approaching Castro Street in 1888. Note that Market Street is unpaved except for the streetcar right-of-way.



Castro Street looking north from 21st Street in 1905 showing cable car tracks and adjacent development.

Residential Development



The earliest documented dwelling in the study area at 591-593 Noe, built 1864

Residential Development



Residential Development



Fernando Nelson House, 701 Castro Street (built 1897)



725, 727-731, and 733 Castro Street (built 1898)

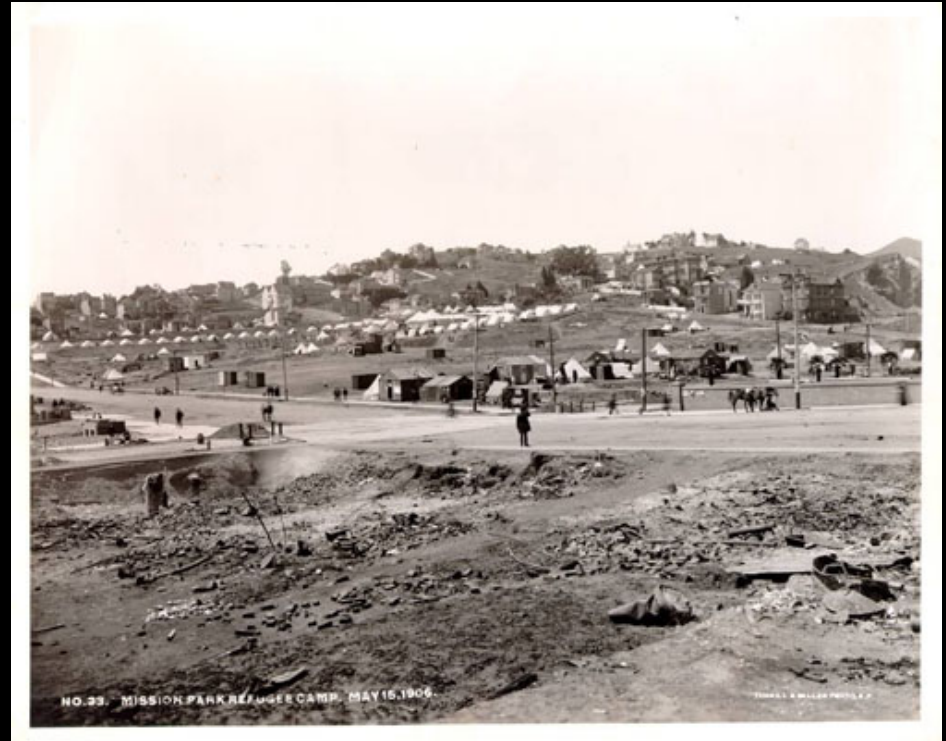


554 and 558 Liberty Street (built 1897)

Residential Development



Earthquake shack dwelling at 300 Cumberland Street



Dolores Park refugee camp looking SW from 18th and Dolores, 1906

Commercial Development



Above: Early example: 3801 17th Street/400 Sanchez Street (built before 1886)



Transportation



Twin Peaks Tunnel nearing completion, ca.
1917



Market Street extension looking northeast
from 18th Street, 1927

Small-Scale Infrastructure



Sanchez Street retaining wall and staircase, looking south from 19th Street

Social and Political Life



Duveneck's Saloon, 17th and Eureka, 1928



Site of the Eureka Club, "the last straight bar in the Castro," in the mid 1970s, 4141 18th Street (18th & Collingwood)

George and Ruth production, was by Lawrence and the latter was found dead in his apartment today, hospital for examination.

17,000 Expected to Attend Eureka Valley Fete Tonight

Dedicated to Treasure Island and the 1939 Exposition, Eureka Valley Citizen's Association will hold its ninth annual outdoor fiesta tonight at Sixteenth and Market streets.

More than 17,000 residents of Eureka valley and adjacent districts are expected to be present at the affair, to which Mayor Rossi and Congressman Richard J. Welch have been invited as guests of honor, President Richard V. Leary said yesterday.

Street dancing and various entertainment acts will feature the fiesta and Treasure Island decorations will carry out the motif, according to Joseph Reubens, chairman of the evening's events.

Assisting Reubens on the arrangements committee are John O'Neill, Thomas Corey, George D. Monroe, John J. Petipp, Walter H. Meyer, Aubry Phillips and Edward Sorini.

Announcement that the end of

terday by Reynald J. Bianchi, Beautification president and chairman for Columbus day celebration, October 12.

Under the new plan voting for queen contestants will continue until September 15, Bianchi said. The queen and winners of consolation prizes will be announced at the Palace Theater "probably on October 1." The contest was to have closed July 25.

The girl who wins the crown will reign over the Columbus day fete in addition to being given a tour of Italy and presiding over Italian festivities at the exposition.

Commencement of highway work across Presidio to connect Funston avenue with Golden Gate Bridge will be urged at tonight's Park-Presidio Improvement Association meeting at 649 Eighth avenue, President S. Joseph Theisen stated yesterday.

Meeting tonight to discuss com- on pro- in Glen- ark Commu- street.



Richard Leary, the "Mayor of Eureka Valley," crowning a Fiesta Queen in 1950

Social and Political Life



Collingwood Hall, 4144-4150 18th Street (18th & Collingwood) built ca. 1909

Civic and Institutional Development



McCreey
Branch of the
San Francisco
Public Library
(1904, photo
1940)

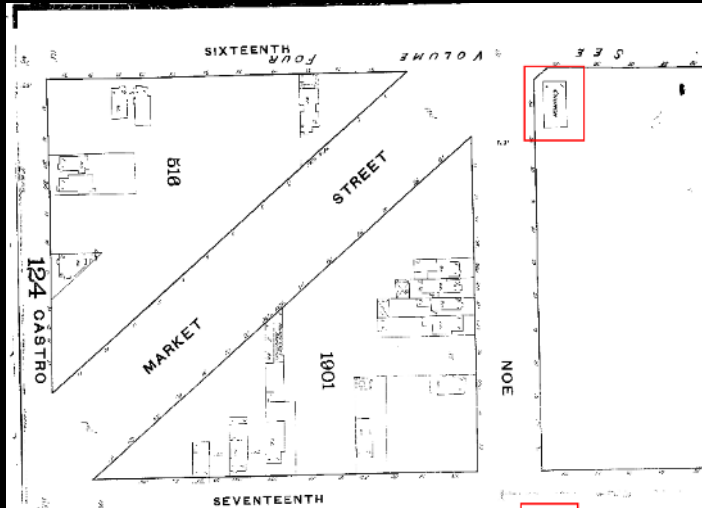


Douglass Schools: 1895 (above) and 1953
(below) at 19th & Collingwood



Eureka Valley playground and recreation center
under construction, ca. 1954.

Religious Communities



Olivet Congregational Church, est. 1880



Central Baptist Church,
150 Eureka Street in
1930



Trinity Methodist Episcopal Church,
Market, Noe, and 16th streets, in 1930



CHURCH OF THE
HOLY REDEEMER.



Church of the Most Holy
Redeemer, 1901

LGBTQ History (to 1974)



Above: Site of Missouri Mule, 2348 Market Street

Bob Ross House, 4200 20th Street (at Castro)

Left: Site of Full Moon Coffeehouse, 4416 18th Street



Collingwood Hall, 4144-4150 18th Street

Eureka Valley Historic Context Statement

Recommendations

Designation

- Initial Recommendations for Potential San Francisco Landmarks and Historic Districts (more survey and study needed)

Cultural Resource Survey

- Pre-1906 Housing Stock
- Neighborhood Commercial Development
- Documentation and Reevaluation of Previously Identified Historic Districts
- LGBTQ Presence and Influence, 1974-early 1990s
- Thematic Cultural Resource Survey on Surviving Agricultural Properties in SF

Planning

- Legacy Business Study
- Preservation Planning Efforts Focused on Preserving Small-Scale Housing
- Neighborhood Design Guidelines

EUREKA VALLEY HISTORIC CONTEXT STATEMENT: NEXT STEPS

1. Community Review Period
2. Historic Preservation Commission Hearing
3. Forward to California State Office of Historic Preservation

Eureka Valley Historic Context Statement

How to Comment:

eurekavalleyhistory@gmail.com



QUESTIONS?

www.sfplanning.org