

Commitment of Prop K Funds to the Bayshore Caltrain Pedestrian Connections Project

Agenda Item 10

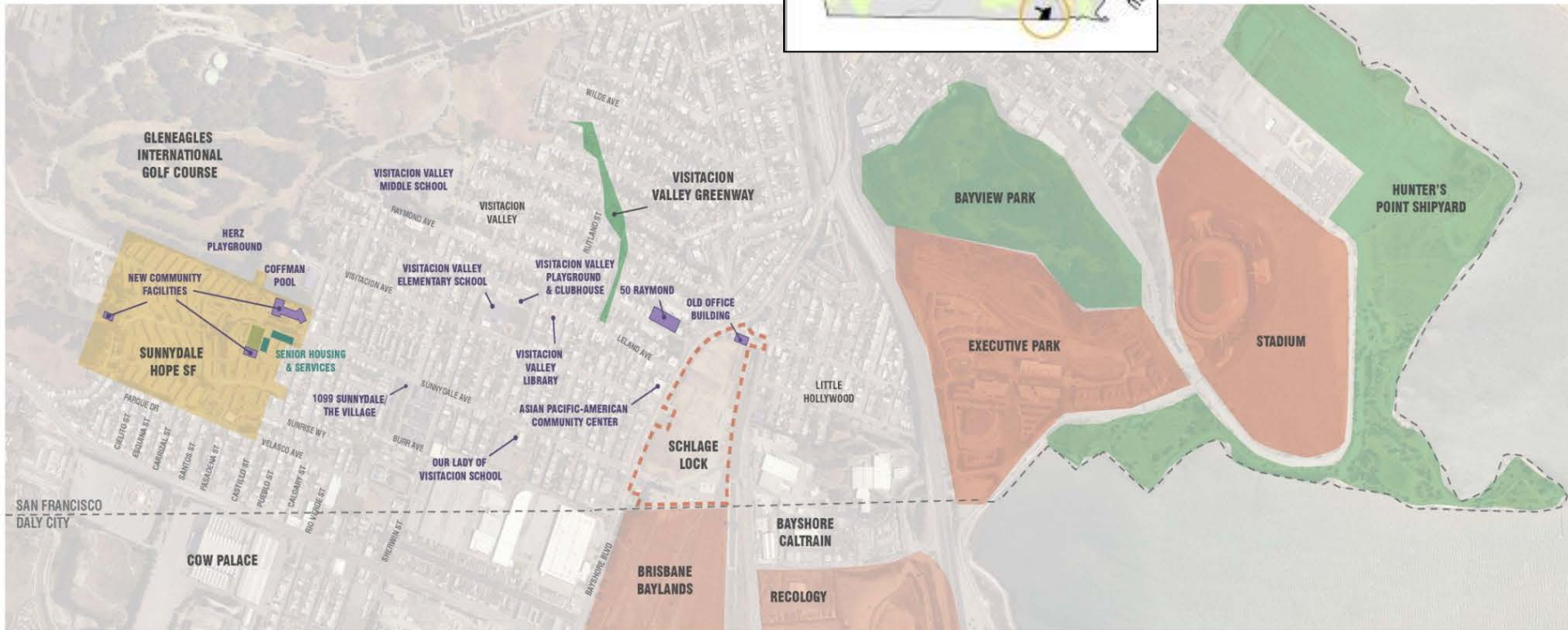
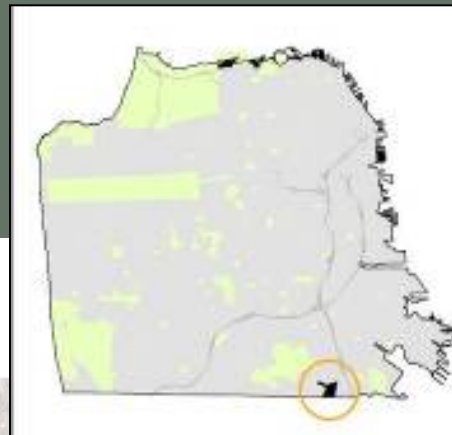


SAN FRANCISCO COUNTY TRANSPORTATION AUTHORITY

Citizens Advisory Committee

May 28, 2014

Project Context



Bayshore Caltrain Pedestrian Connections Project

Direct pedestrian connection to Bayshore Caltrain station is one of the highest community priorities identified in the SFCTA's Bi-County Transportation Study

Bayshore Caltrain Pedestrian Connections Project will provide:

- Direct connection between Bayshore Blvd and the Bayshore Caltrain Station as early as 2016
- Safe, secure access through Schlage Lock site, during development
- Interim pedestrian and bicyclist connection more than 7 years before completion of development in 2023



Bayshore Caltrain Pedestrian Connections Project

Commits \$2 million in FY 2015/16 Prop K funds from Bi-County category

Supports anticipated July approval of Development Agreement

SFMTA would apply for funds on behalf of developer; allocation request to include full scope, schedule and budget

Conditioned upon:

- **Board of Supervisors approval of the Schlage Lock Developer Agreement**
- **As neighborhood impact fees are received, the SFCTA and SFMTA will jointly determine which Bi-County priorities (e.g. Geneva-Harney BRT) get funded**



Questions?



SAN FRANCISCO COUNTY TRANSPORTATION AUTHORITY

Citizens Advisory Committee

May 28, 2014