

THE EAST CUT GRID

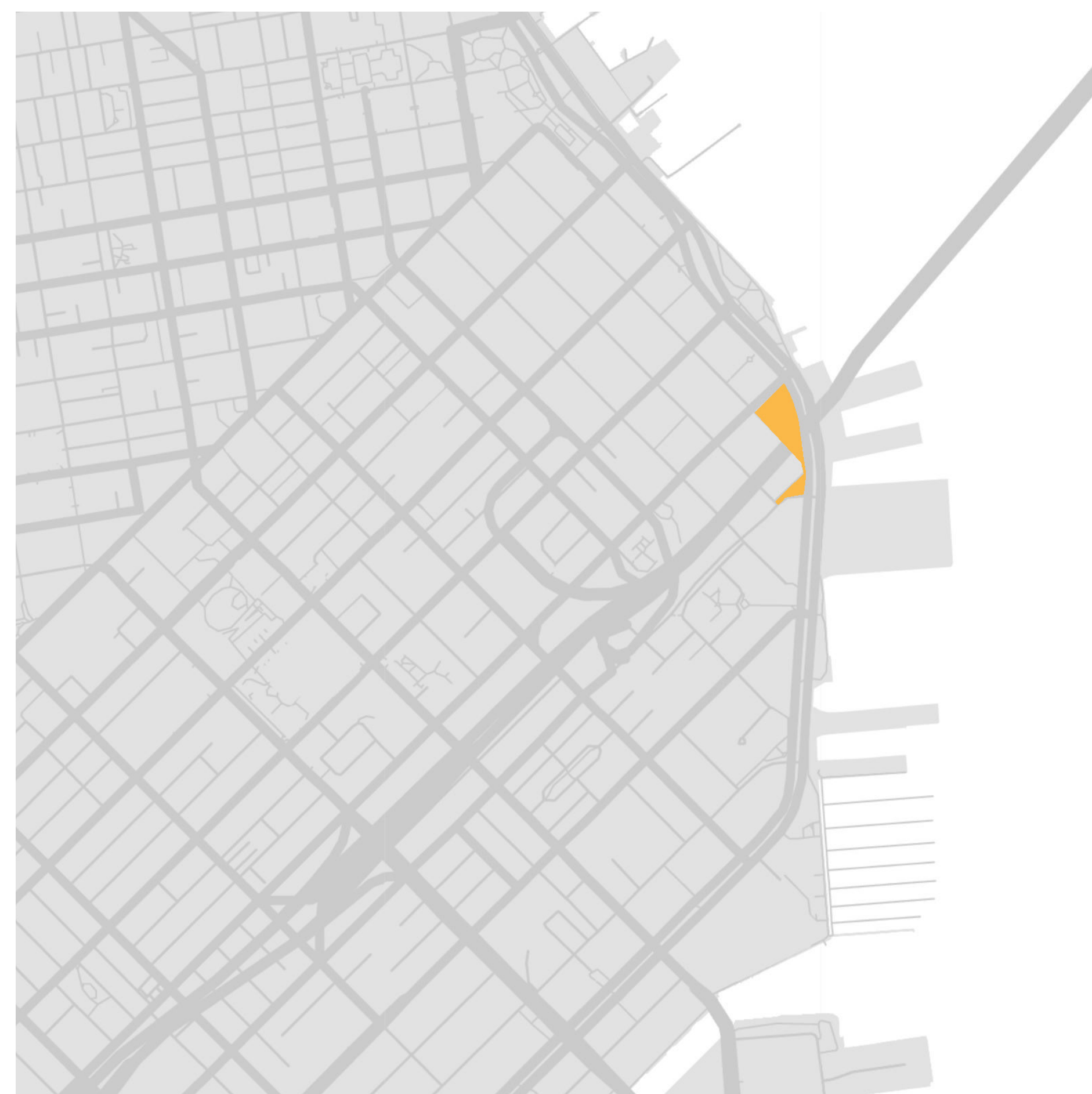
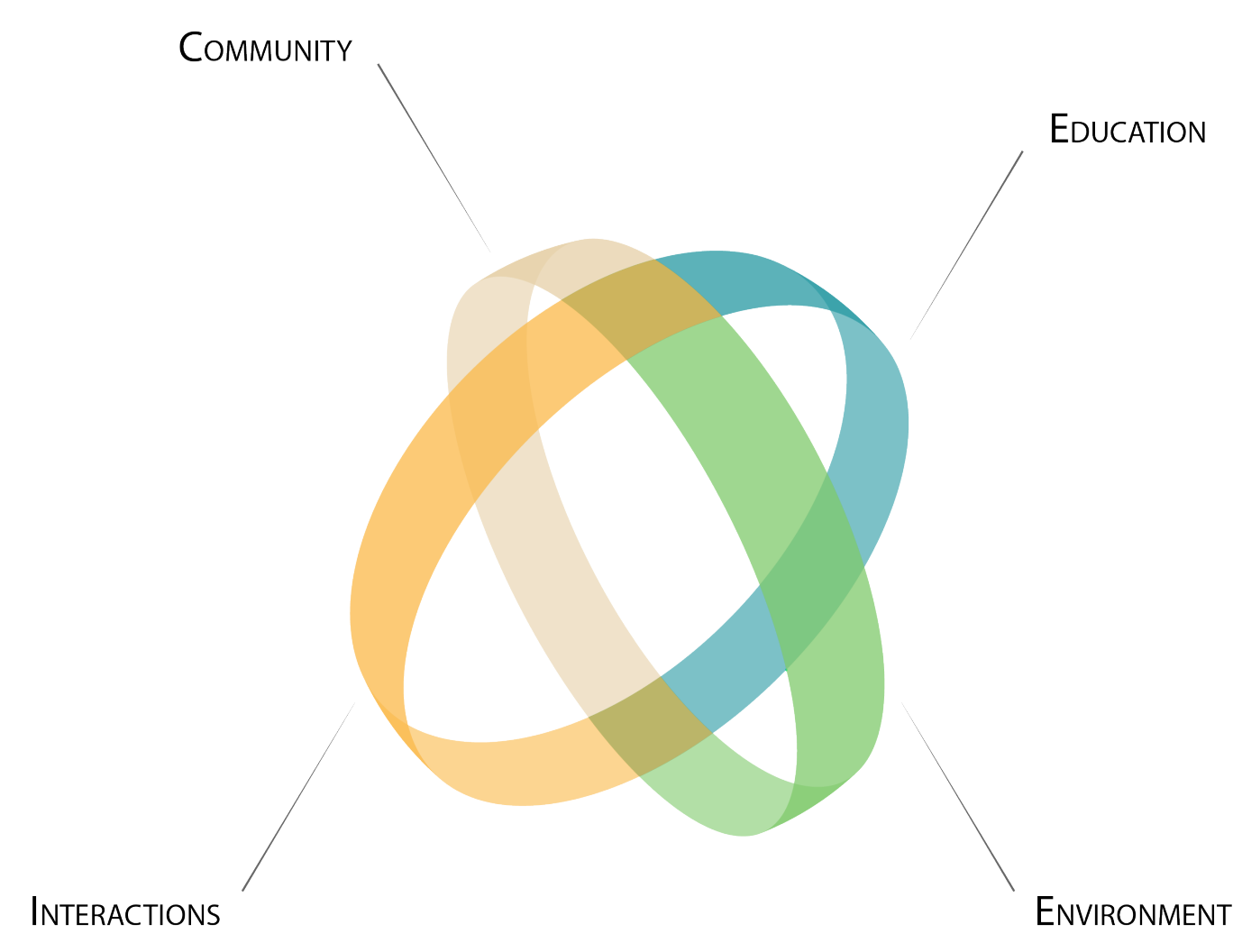
SoDA DESIGN PROPOSAL

TEAM:

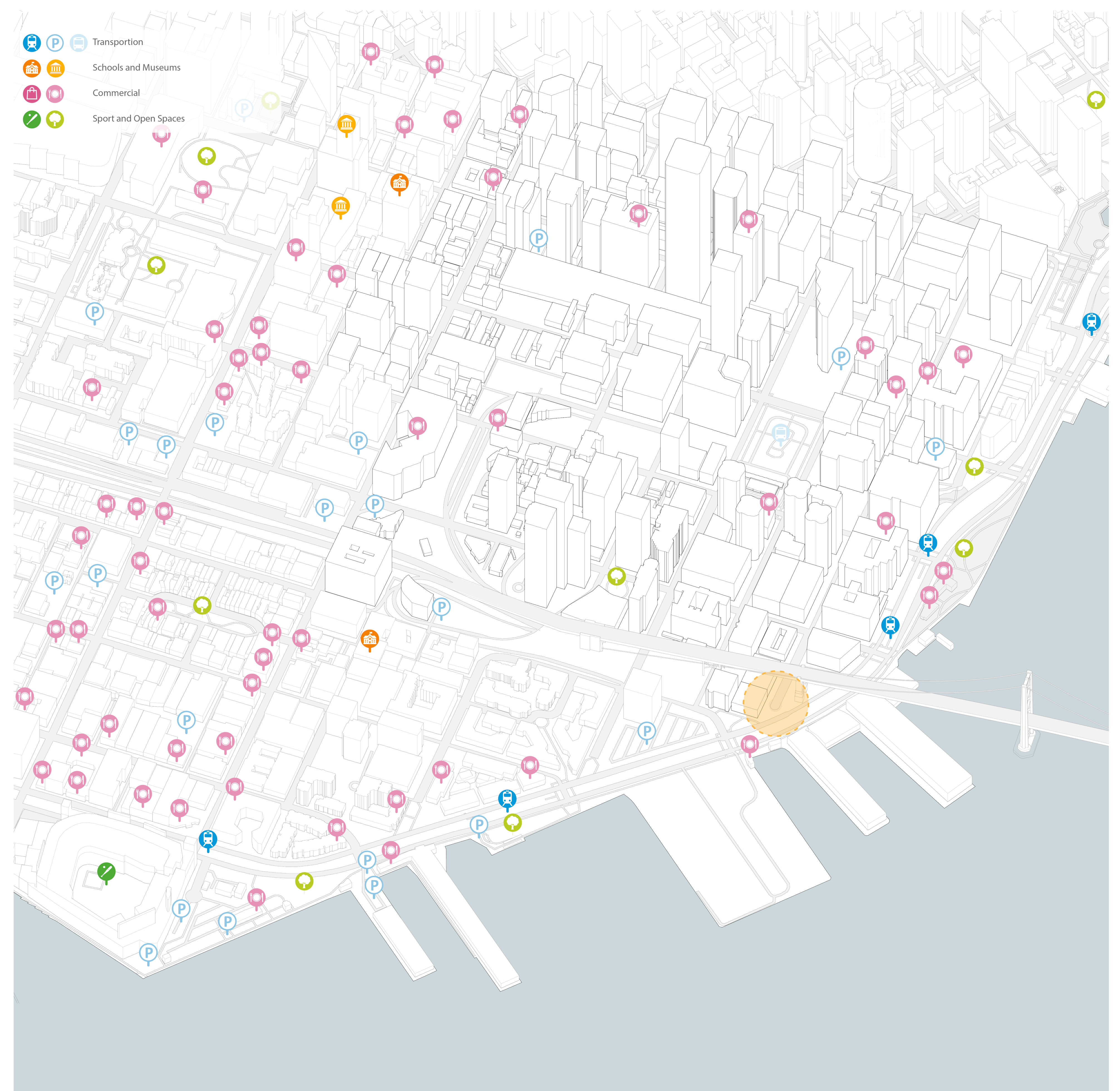
Troy Hughes
Sharon Lam
Shunta Moriuchi

The East Cut Grid takes inspiration from the intersection of San Francisco's linear grid met by the curve of The Embarcadero. The stations are created by dimensionalizing the grid cut and allowing for spaces that people can inhabit under, over, and throughout. Utilizing the nature of a grid and juxtaposing the scale allows for the grids' relationship to the body to be everchanging for a unique experience. The redesign helps unite people from all backgrounds and allows for a diverse environment of both human and spatial interaction. Once on the site a person becomes part of the intersecting and overlapping spaces that result from the grid. Whether people are passing by or staying for elongated periods of time, they will be more apt to migrate closer to the historic Bay Bridge.

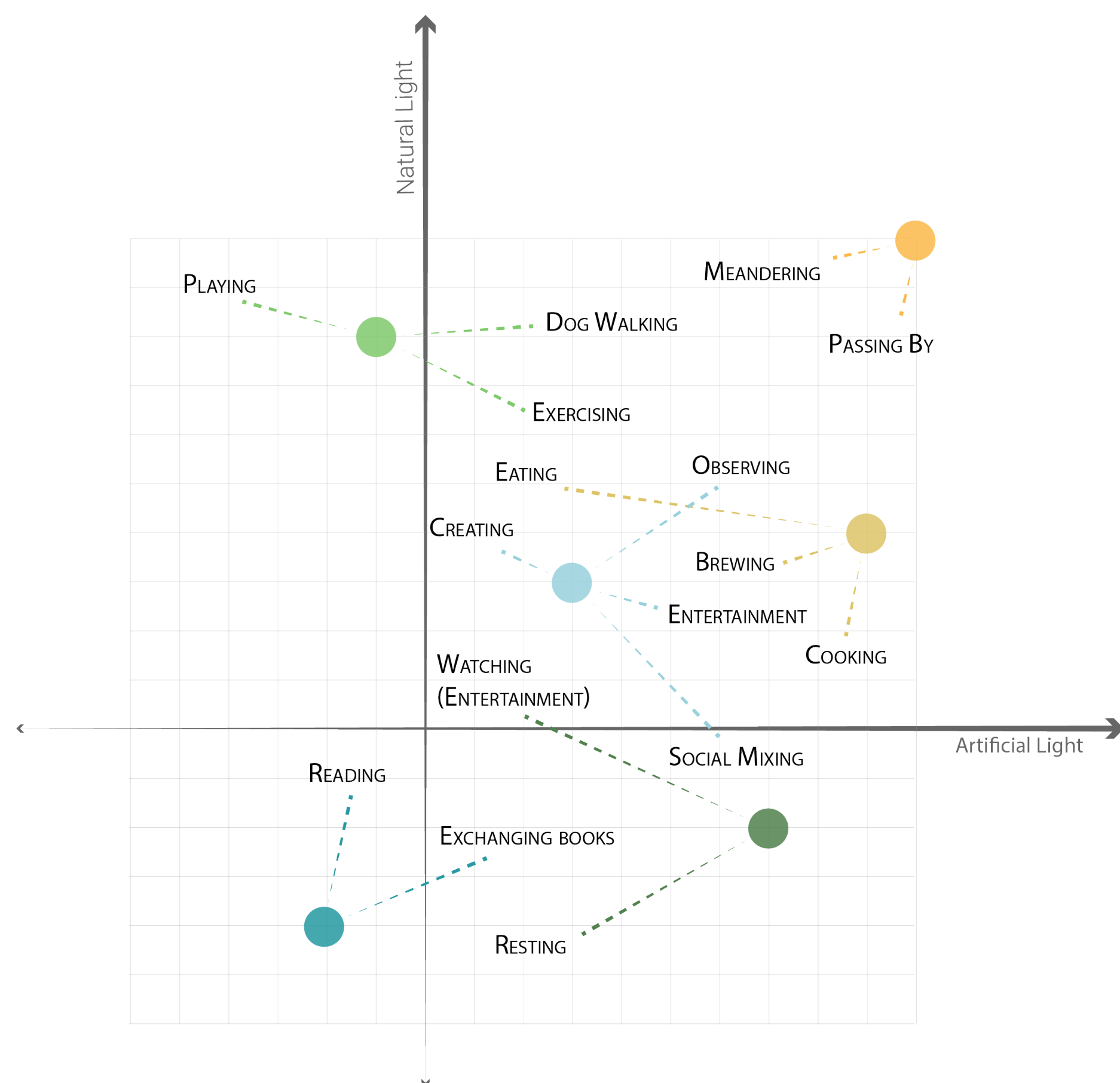
Our approach was to create a module that can be assembled for semi-permanent use, but for multiple programs. Using a modular "flat packing" approach helps with cost of material and set-up. Adding grass within the space makes it feel less barren and more inviting, while bright pops of color and the warmth of the plywood gives the Spear Street cul-de-sac a whole new life.



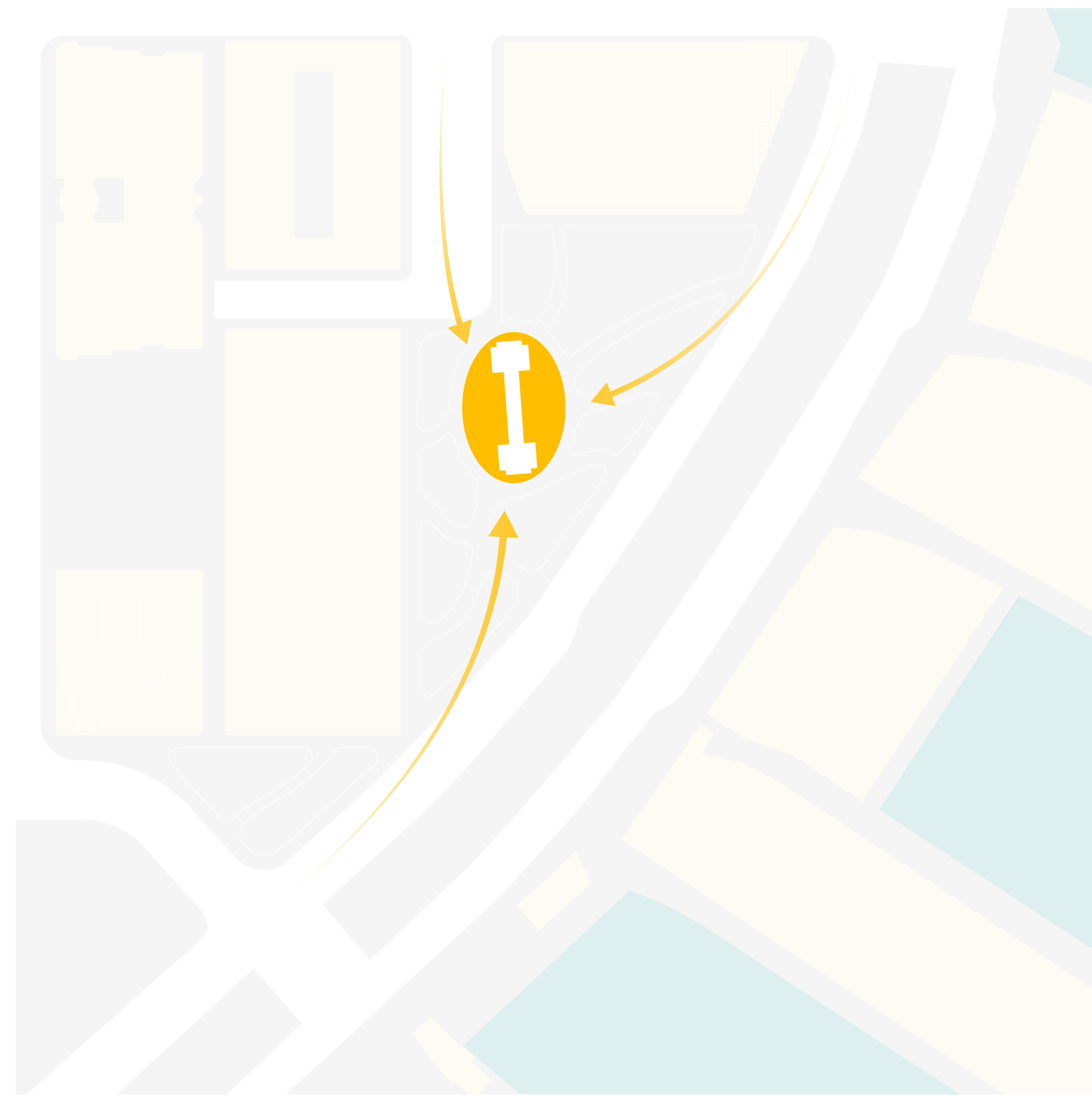
VICINITY MAP



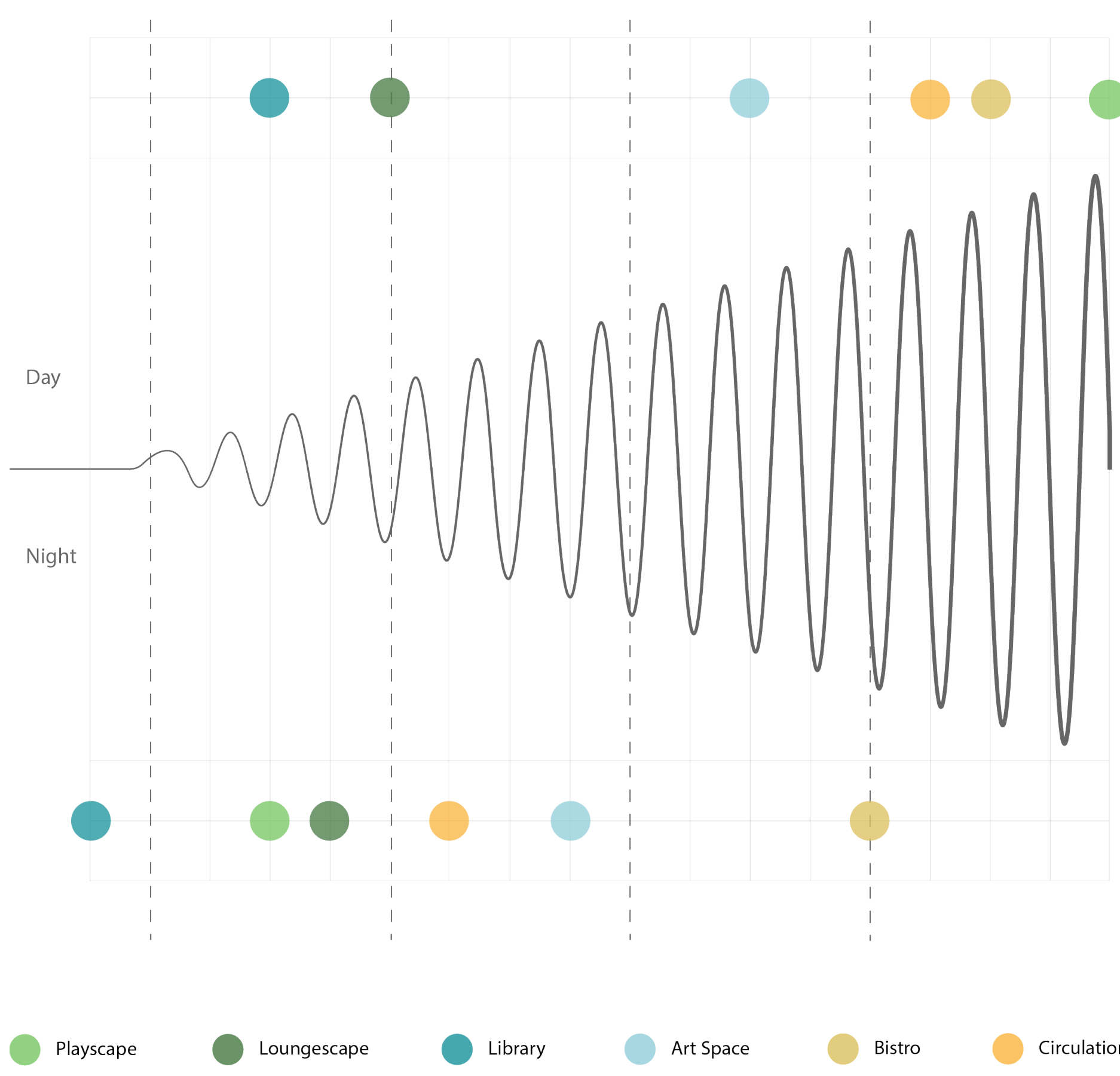
TYPOLOGY MAP



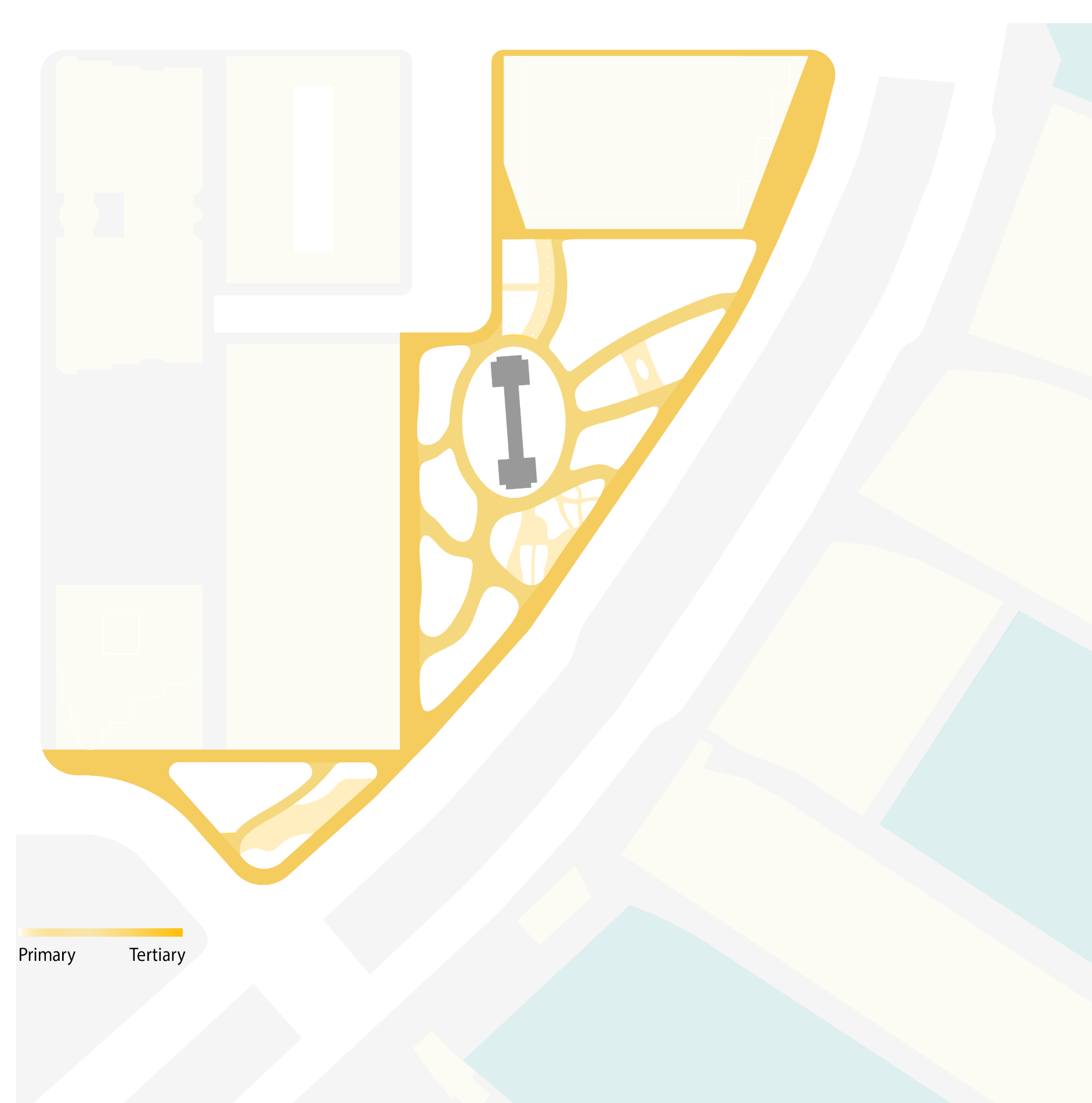
LIGHT MATRIX



PARTI DIAGRAM



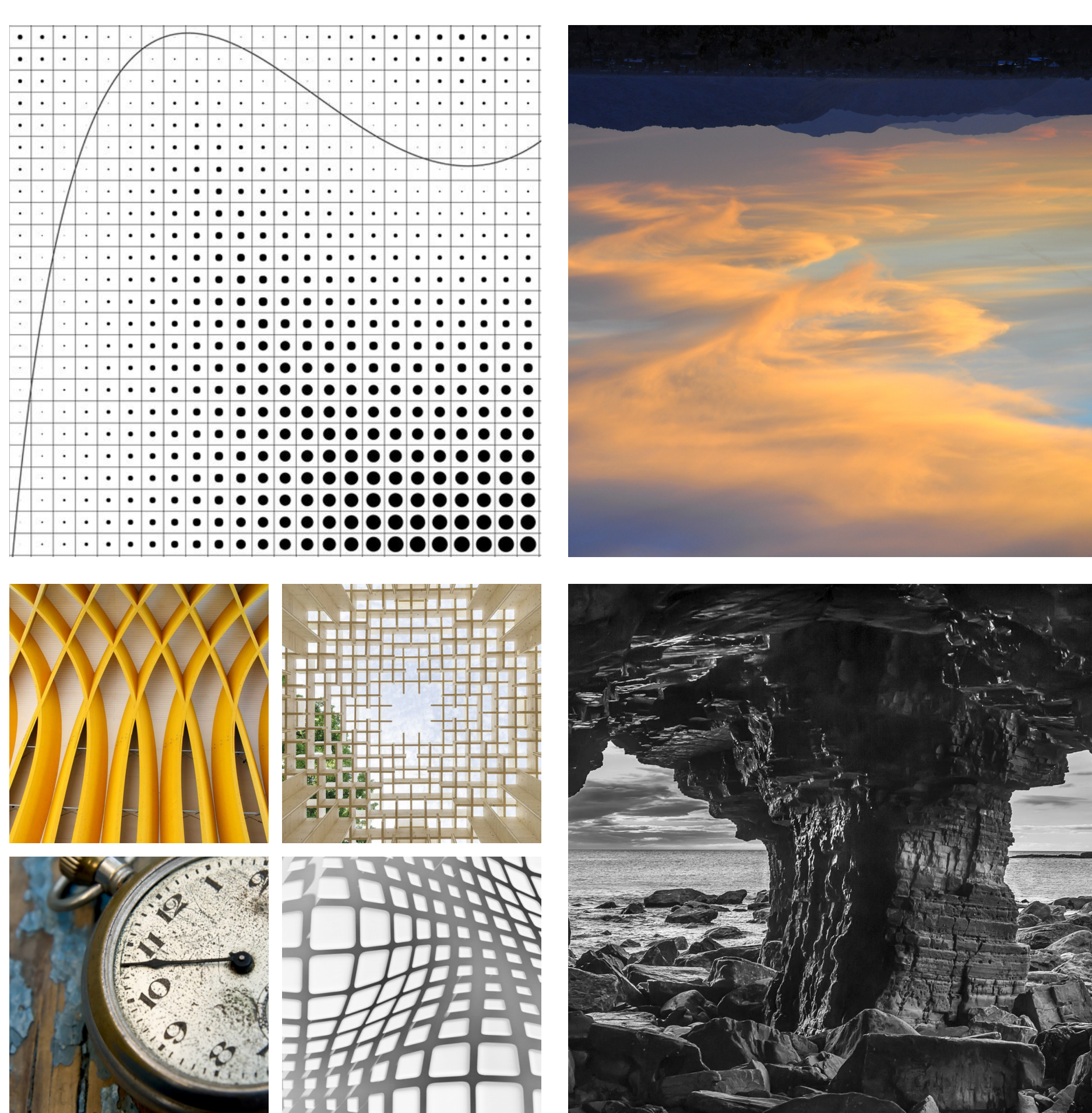
SOUND MATRIX



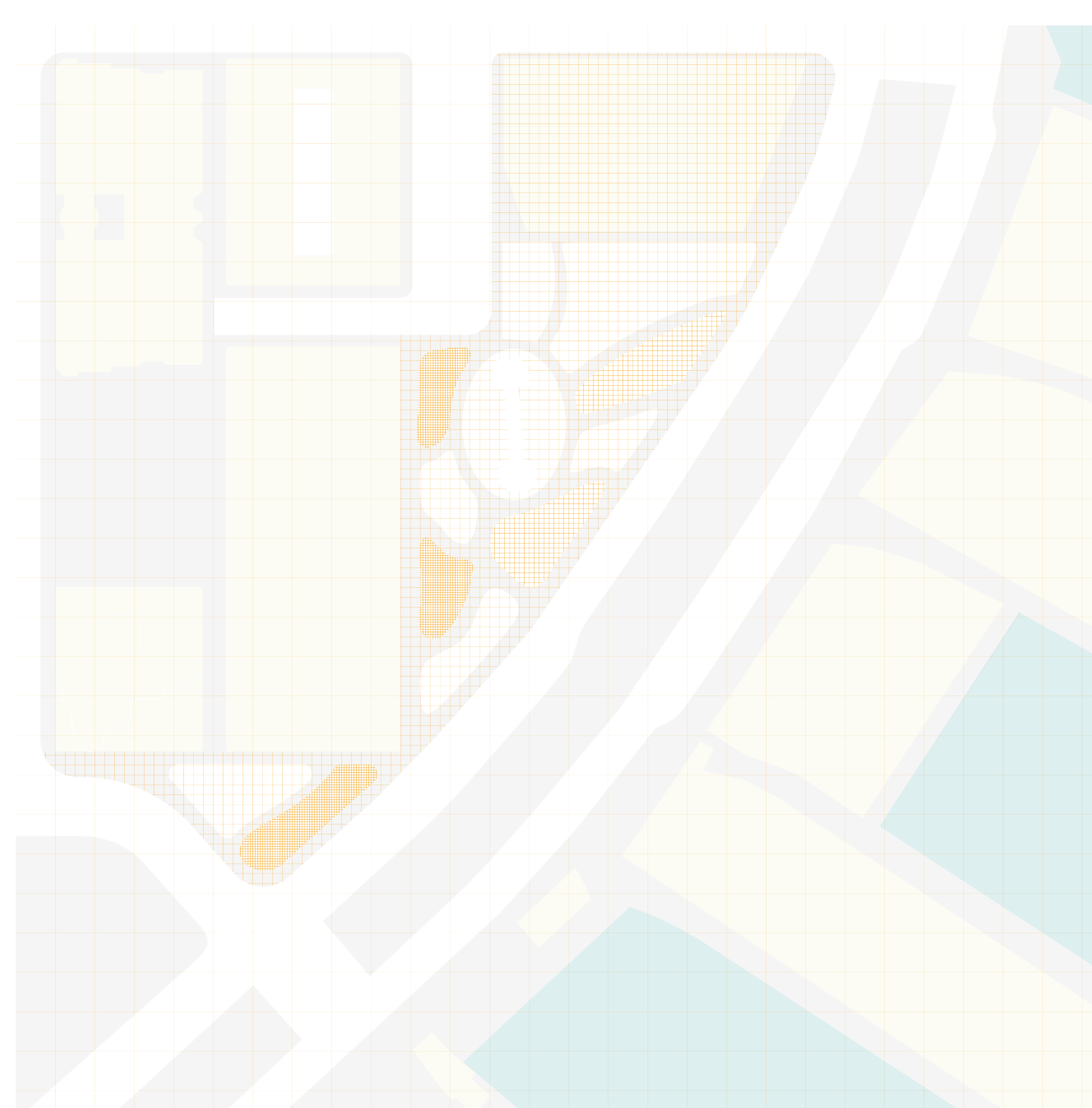
CIRCULATION DIAGRAM



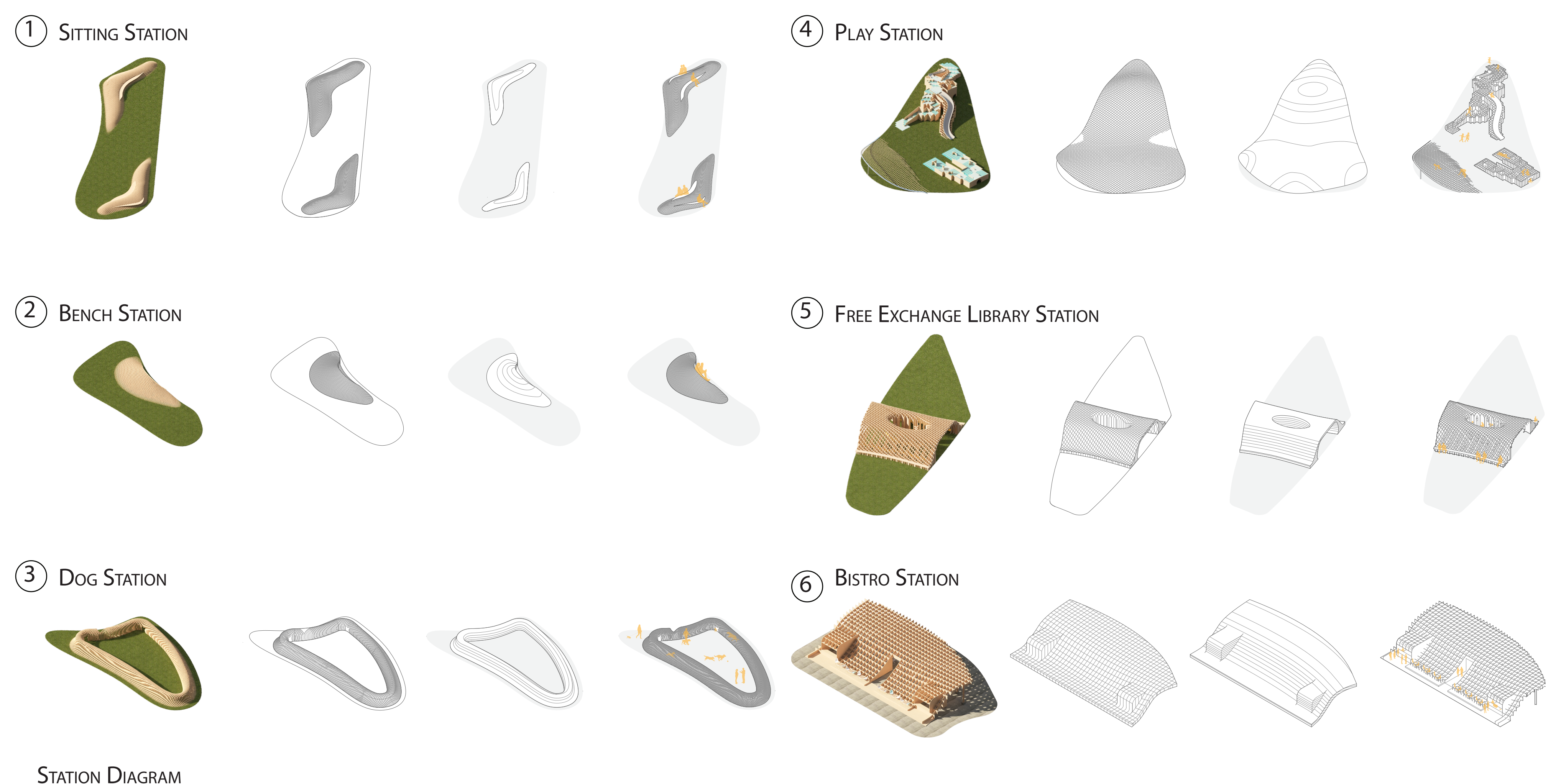
SITE MAP



MOOD BOARD



GRID DIAGRAM



STATION DIAGRAM

