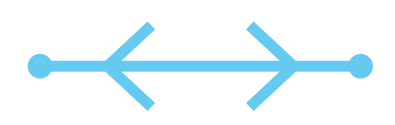


Here are a list of our suggested design ideas based on the three main themes of unify, signify, and complete: Ideas that define Mission Street as one place, ideas that highlight unique places on Mission Street, and ideas that address Mission Street's current needs. Please use these ideas to provide feedback at the interactive discussion table.

TODAY DESIGN TOOLS SUGGESTED ACTION ITEMS

UNIFY



UNIFY



SEATING

Seating is the key element that accommodates the high demand of people to spend time on the street to socialize, exchange, watch other people.

NEED: Except for the 25th and 26th blocks, there is no permanent seating along Mission Street.

ACTION: Permanent seating like benches or other low structures could be considered at key locations; merchant organizations or other institutions could help fund such seating elements as possible. Adopt a bench program?

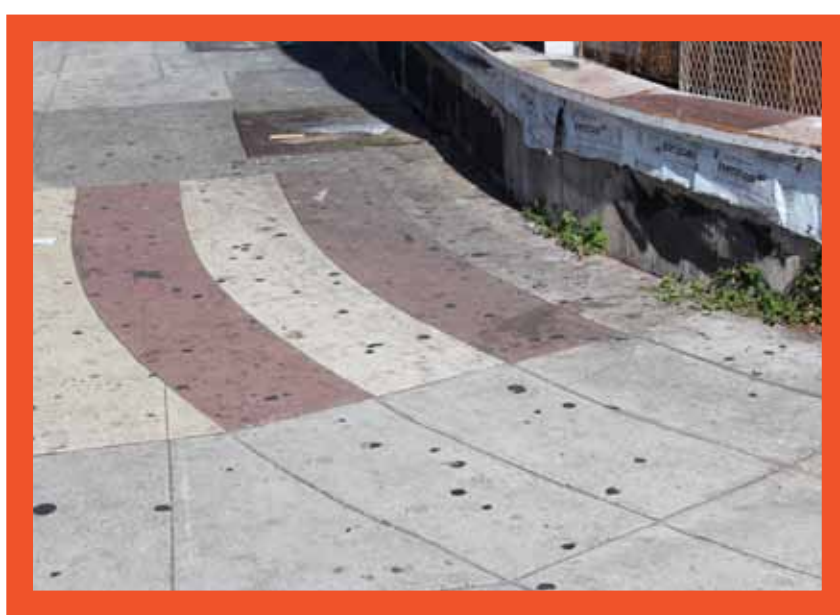


MOVABLE SEATING

Movable seating can be a convenient element in spaces that are dynamic, ever changing throughout the hours of a day, crowded and active.

NEED: There is tremendous request for movable seating along the corridor. We observed a variety of improvised seating - from the most standard to the most creative. This fact points to a real need that should be addressed.

ACTION: Design a prototype that is flexible, easily foldable, easily stored to be reused the following day. Individuals could own their own or neighborhood and merchant organizations or such could help procure a stock for their own block. Adopt a seat program?

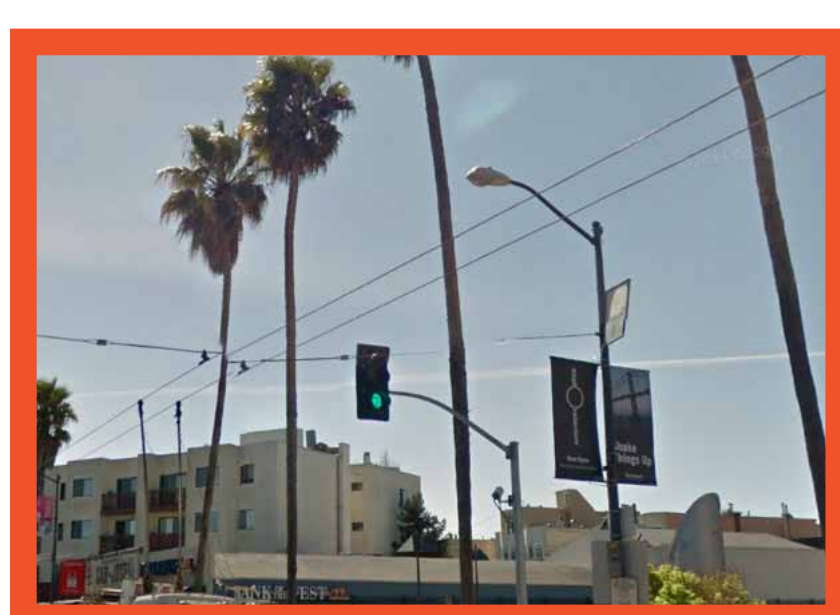


SIDEWALK PAVING

Sidewalk paving can help unify the overall sense of place of a district. A uniform, neutral sidewalk paving can help avoid a clutter effect while highlighting significant elements unique to the corridor.

NEED: The current dark concrete paving is in very poor conditions with cracks and holes making the sidewalks uneven and potentially hazardous for pedestrians.

ACTION: Consider options for paving materials that are neutral in color and easily maintainable - create recommendations for required future sidewalk upgrades. Given the cost of repaving all sidewalks along corridor at once, developers and property owners should use the recommended sidewalk paving when upgrading their properties so that improvements will happen incrementally but consistently.

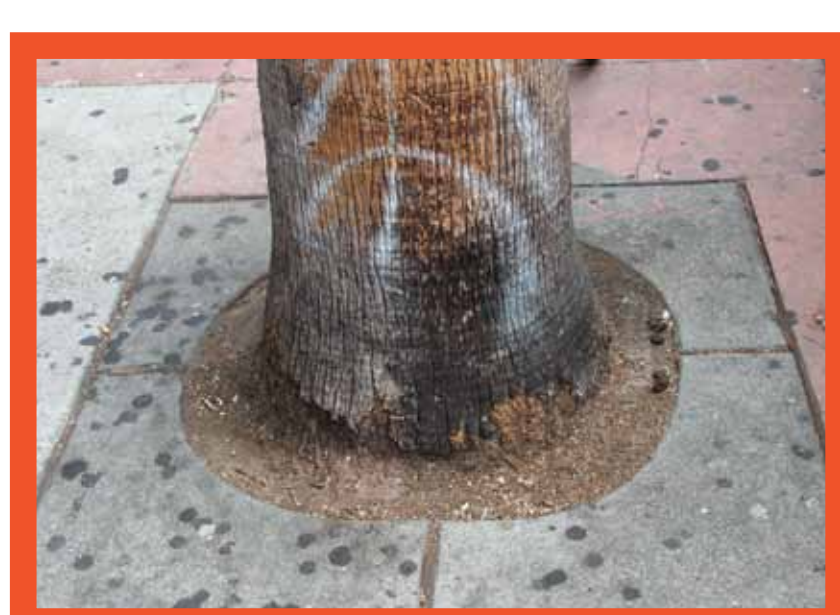
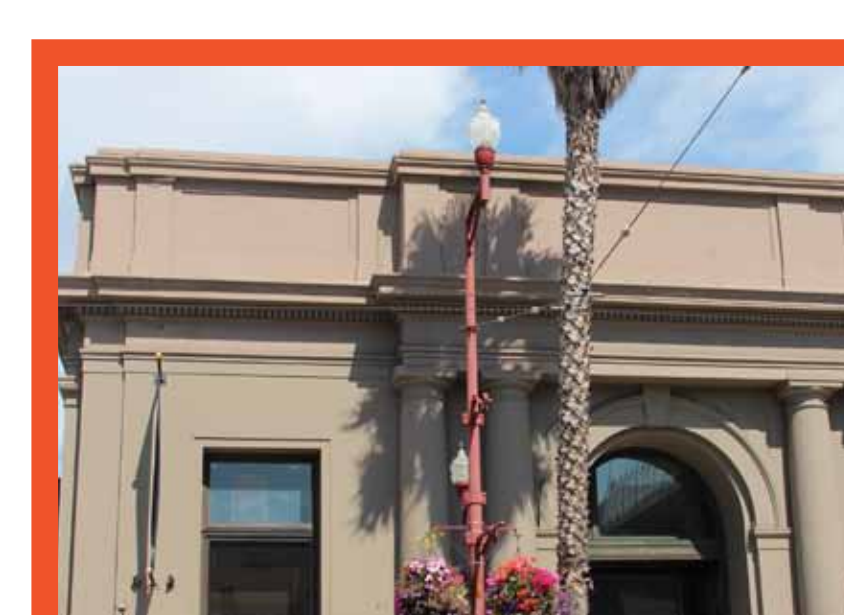


LIGHTING*

A continuous rhythm of lighting elements along the corridor can help define a unified identity of a district. Pedestrian lighting can be complemented by accent lighting during festivals and special holidays.

NEED: Pedestrian lighting is inconsistent throughout the corridor

ACTION: Strengthen pedestrian lighting to create a "commercial district feel" and increase pedestrian safety. Consider a holiday lighting program to celebrate the festivals and community events of the district.

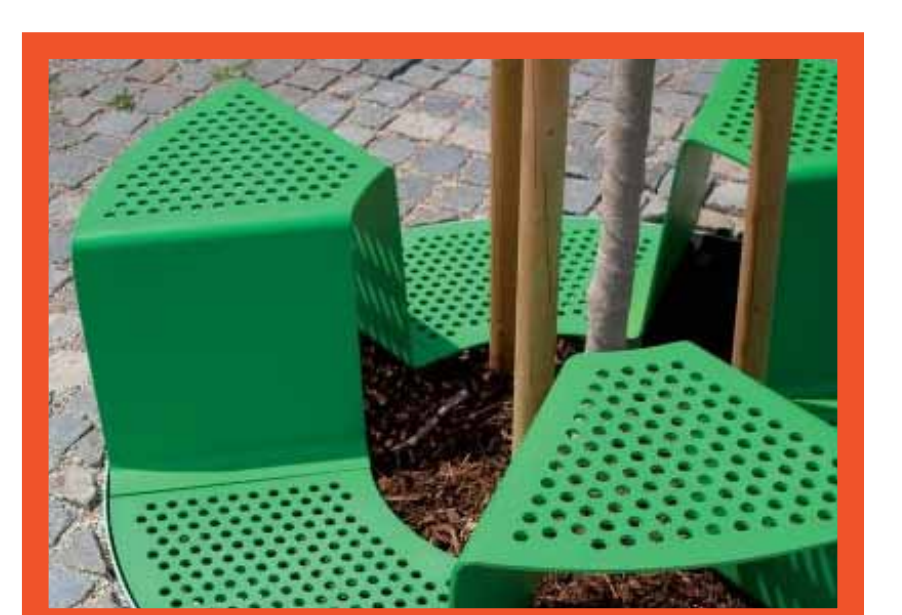


TREE GRATES

Tree grates are an easy way to introduce art on the sidewalk along a commercial corridor.

NEED: There are only a few tree grates along Mission Street. Often tree pits are open with exposed dirt and in poor conditions.

ACTION: Propose a few design alternatives to introduce grates along Mission Street. Grates could reflect the different segments (see Urban Forest display) or just be a unifying element along the whole stretch.



BIKE RACKS

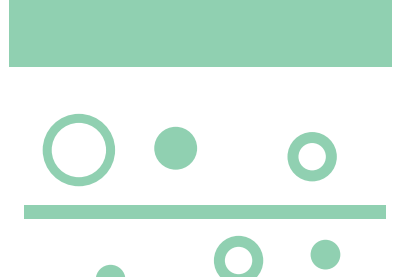
Bike racks can be tools to incorporate art along the corridor to express the identity of the district.

NEED: Observed lack of bike parking along Mission Street. Bikes often locked to a variety of improvised structures. There is only one bike corral along the stretch and standard MTA racks at some locations

ACTION: Identify ideal locations for racks; explore ideas for custom-made racks or order new standard racks with MTA. Design competition?



SIGNIFY



SIGNIFY

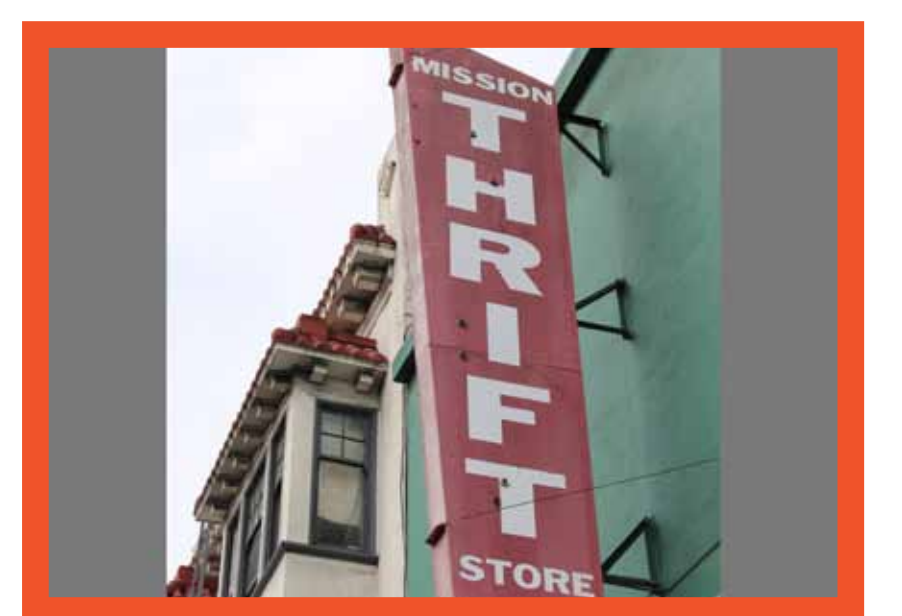


HISTORIC SIGNAGE*

Historic signage is a strong identifying element of the Mission District and it can be used to express the neighborhood's cultural identity.

NEED: There are many historic signs along the corridor: few are well preserved while many are faded, altered or in disrepair.

ACTION: Bring back signage as an important element of the streetscape. Historic signs should be incorporated as much as possible in streetscape design concepts at specific locations. A program for an inventory of historic signs could be followed by individual restorations depending on individual funding and/ or an incentive program. Façade Improvement program for the "Heart of the Neighborhood" section of the corridor?

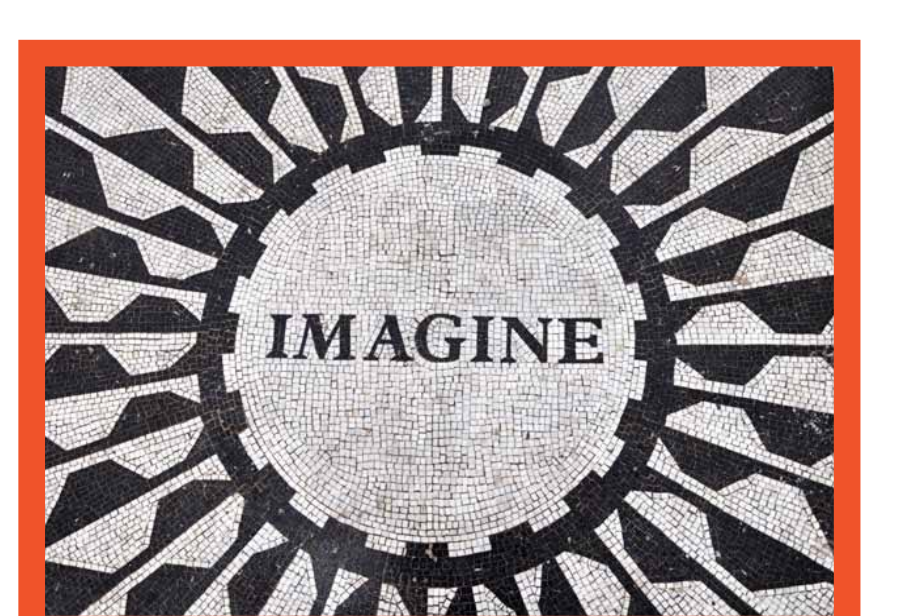
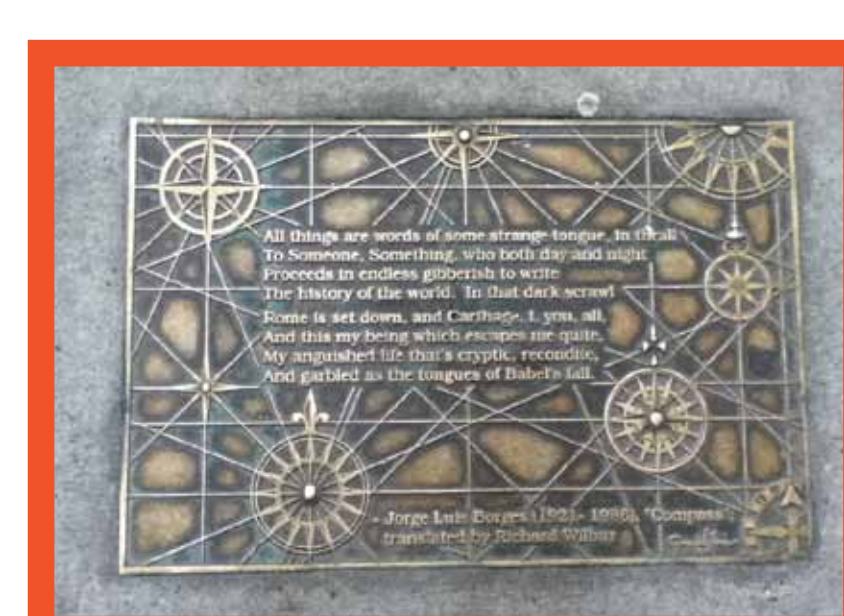


SPECIAL PAVING

Special paving, as historic signage, is also a very important element that identifies the uniqueness of the Mission District.

NEED: There are many examples of special paving treatment along the Mission Corridor, especially in its historic "heart": a considerable number is well preserved while other examples have been painted over or damaged.

ACTION: Integrate special paving restoration in streetscape proposals at specific location. A program for historic special paving could be followed by individual restorations depending on individual funding and/ or an incentive program.

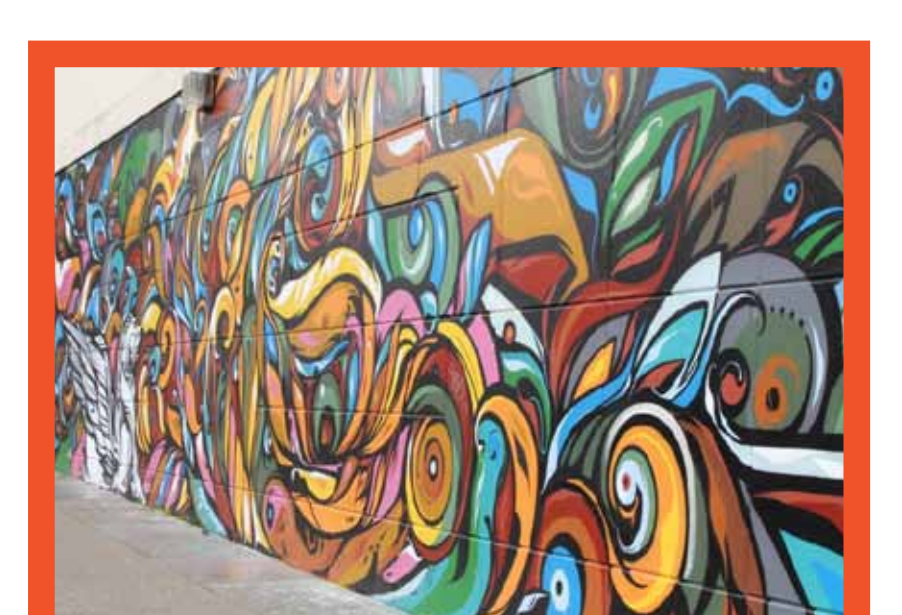


STREET ART

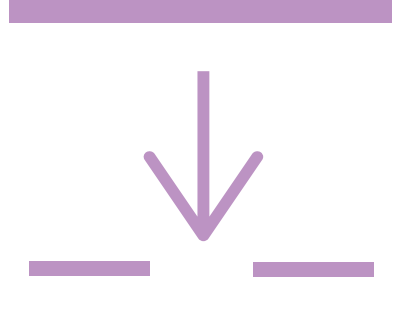
Street art is the very essence of the Mission. It is impossible to think about the Mission Neighborhood without thinking about its richly painted murals and street art.

NEED: A considerable number of murals have fallen into disrepair or have faded.

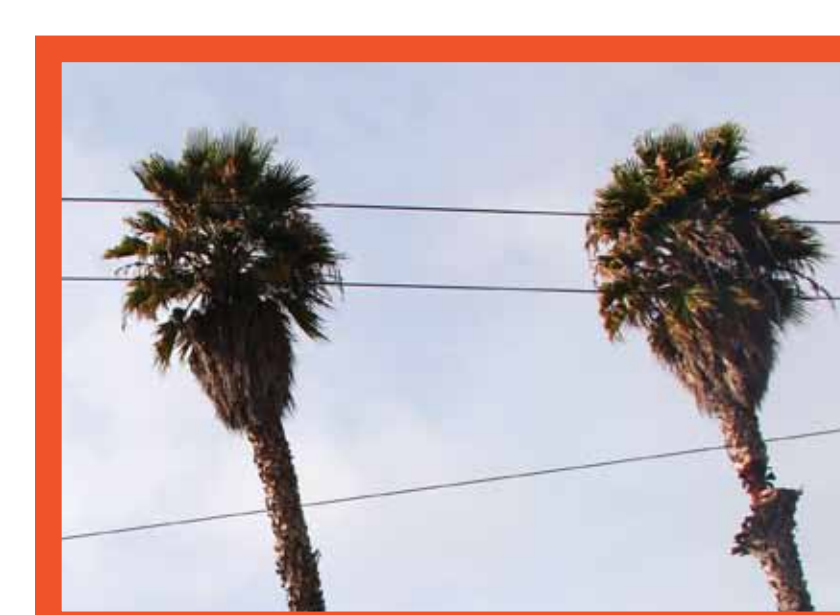
ACTION: A program for mural restoration; complement historic murals with new styles and themes that can express the Mission's ever changing identity.



COMPLETE



COMPLETE



URBAN FOREST*

The iconic palms of Mission street are one of the many species found along the corridor. By filling the gaps, trees can help unify the different segments of our project area by planting that is uniform and consistent.

NEED: Gaps and mix of species create a cluttered effect where trees are not an important element of the streetscape but compete with other vertical elements.

ACTION: Develop clear recommendation for tree species by area of the corridor. (See: Urban Forest board).

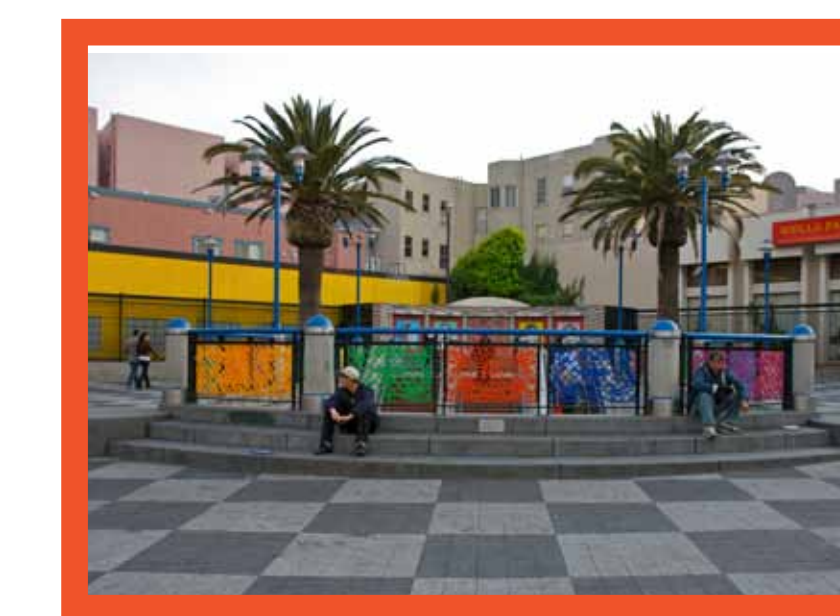


TRANSIT

Transit amenities can support the identity of Mission Street as one of the main transit corridor in San Francisco.

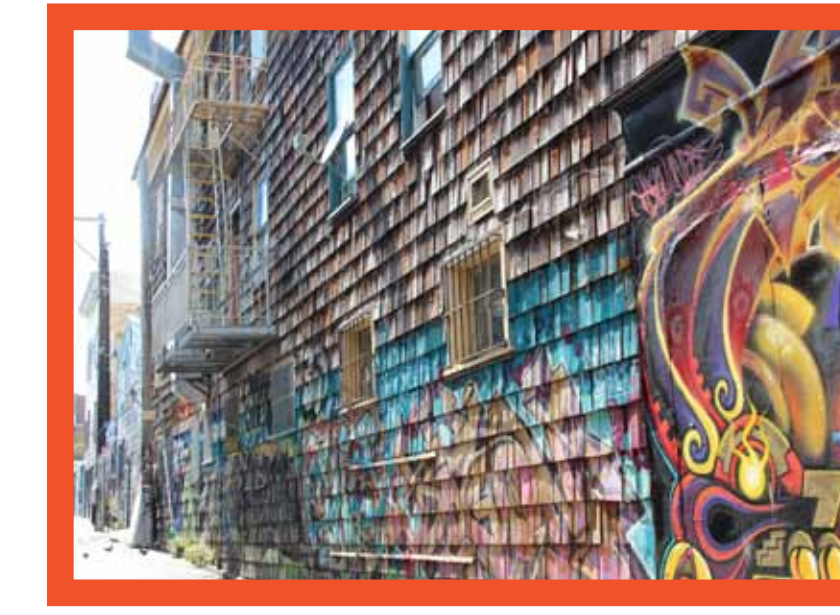
NEED: Transit amenities are not consistent along the corridor.

ACTION: Fill gaps by reconsidering the design of the current shelters at key locations; provide new seating, infoboards and other amenities to support transit users and transform Mission Street into first class transit corridor.



ART + TRANSIT

Explore an art program that can complement transit amenities, new public spaces and significant street corners. Work with the great local community of artists to express what Mission Street was, is and will become.



ART + PUBLIC SPACES



* See individual board for more detail.