

Improving safety
and walking
conditions in
San Francisco



Existing Pedestrian Conditions

PSAC | February 8, 2011



CALIFORNIA OFFICE
OF TRAFFIC SAFETY

San Francisco
Department of Public Health

SAN FRANCISCO
PLANNING DEPARTMENT



SFMTA | Municipal Transportation Agency

Contents

1. Project Background & Goals
2. Pedestrian Activity: Where people walk
3. Pedestrian Safety: The conditions people face



WALKFIRST

Project Background and Goals

Project Purpose

The project's goal is to improve walking conditions in San Francisco, and encourage walking as a way of getting around the city.

The WalkFirst project will **identify** where people walk, and **prioritize** how to make safety improvements to best serve pedestrians. This is important in order to best make use of limited funding.





Project Deliverables

- Map of key walking streets in San Francisco
- Method for prioritizing the most important safety improvements
- Preliminary list of pedestrian safety upgrades
- Draft policies to guide City decisions about pedestrian safety and walking conditions
- Examples of street designs to improve the walking environment



Category	Pedestrian Activity	Pedestrian Safety	Project Readiness
Goal	Identify places where people walk	Identify most important locations for safety improvements	Identify opportunities to fund and construct pedestrian improvements
Product	Map of key walking streets in SF	Preliminary project list	Preliminary project list

Goals for the Pedestrian Sector

- **Safety** – Improve pedestrian safety through physical upgrades
- **Connectivity** – Enhance walking as a simple and convenient way to get around the City
- **Pedestrian Experience** – Provide a stronger understanding and orientation of the City through the pedestrian experience
- **Sustainability** – Support sustainable growth built around walkable neighborhoods





WALKFIRST

Pedestrian Activity: Where People Walk

Pedestrian Activity: Where People Walk

1. Access/need to walk

- non-auto mode share, walking to work mode share

2. Transit ridership

- Transit network, transit boardings

3. Density of people

- Residential density, job density, retail density

4. Pedestrian generators

- Colleges, public schools, hospitals and clinics, shopping districts, parks

5. Demographics

- Income, seniors, youth

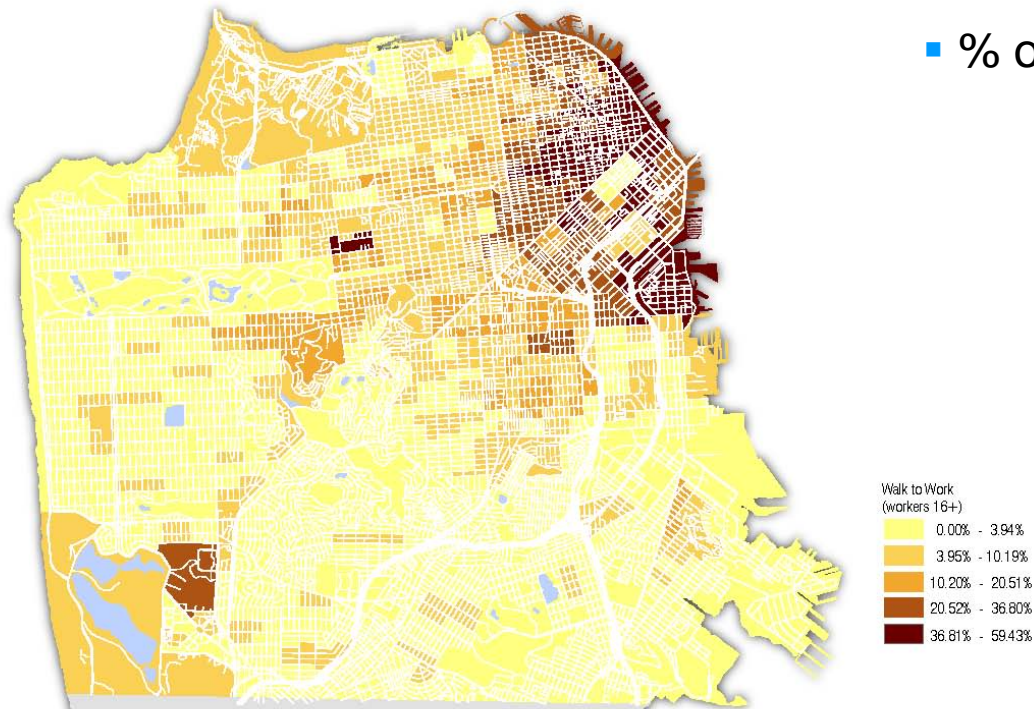
6. Street slope

Access/Need to Walk

(ex. **Walk to Work:** % of workers by census block group)

Other factors:

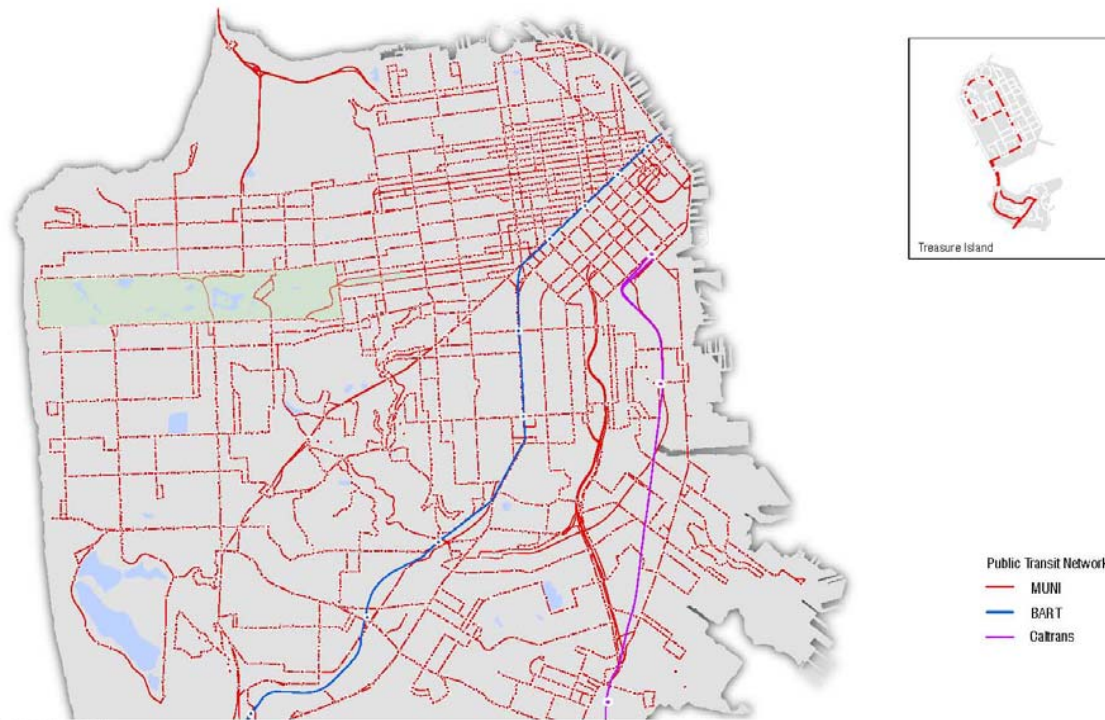
- % of non-auto trips



SAN FRANCISCO
Walk to Work, by Census Block Group - Natural Breaks, 5 classes
Source: Census 2000

Transit Ridership

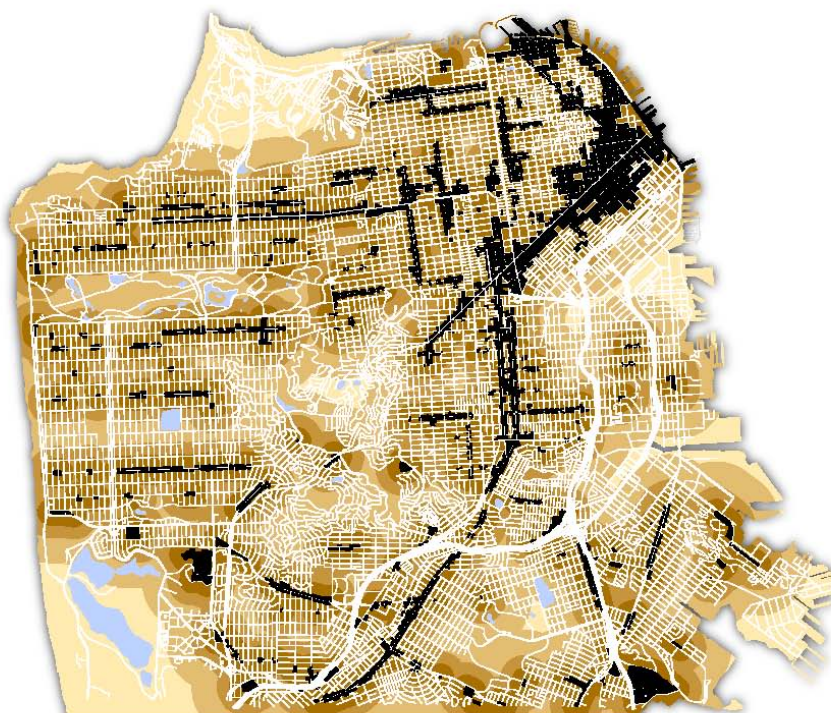
(ex. Transit Network: MUNI, BART and Caltrain routes)



SAN FRANCISCO
Transit Ridership, Public Transportation Network
Source: SFMTA, BART, Caltrans

Pedestrian Generators

(ex. Shopping Districts: 1/8, 1/4, 1/2 mile Buffers)



SAN FRANCISCO
Commercial Zoning Districts - Buffers
Source: San Francisco Planning Department, 2010

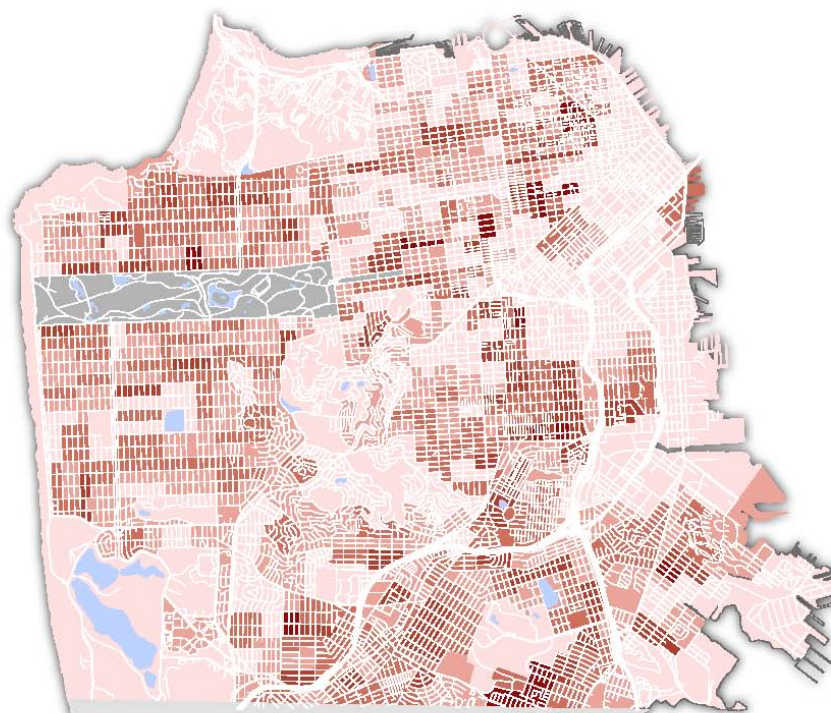
Other factors:

- public schools
- tourist destinations
- health care facilities
- parks and open space
- libraries
- colleges & universities

■ 1/4 mile buffer
■ 1/2 mile buffer
■ Greater than 1/2 mile
◆ Parcel Zoned for Commercial Land Uses (NC or C2 or C3)

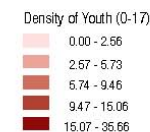
Demographics

(ex. Youth: youth (0-17) per acre by census block group)



Other factors:

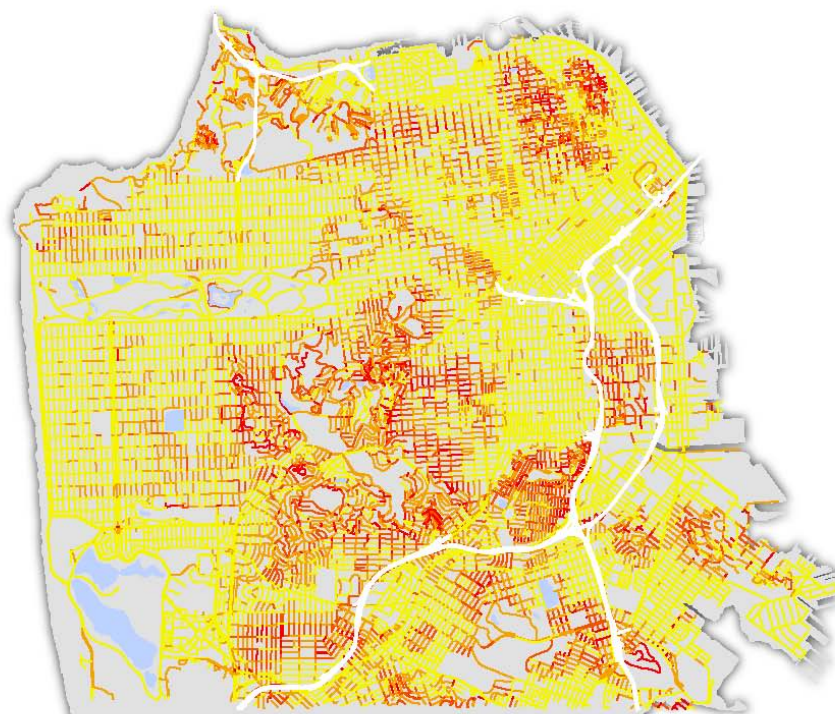
- seniors
- income levels



SAN FRANCISCO
Youth (0-17) per Acre, by Census Block Group - *Natural Breaks, 5 Classes*
Source: 2005-2009 American Community Survey 5-Year Estimates

Topography

(Street Slope: % grade change/block)



Street Slope
(% grade change)

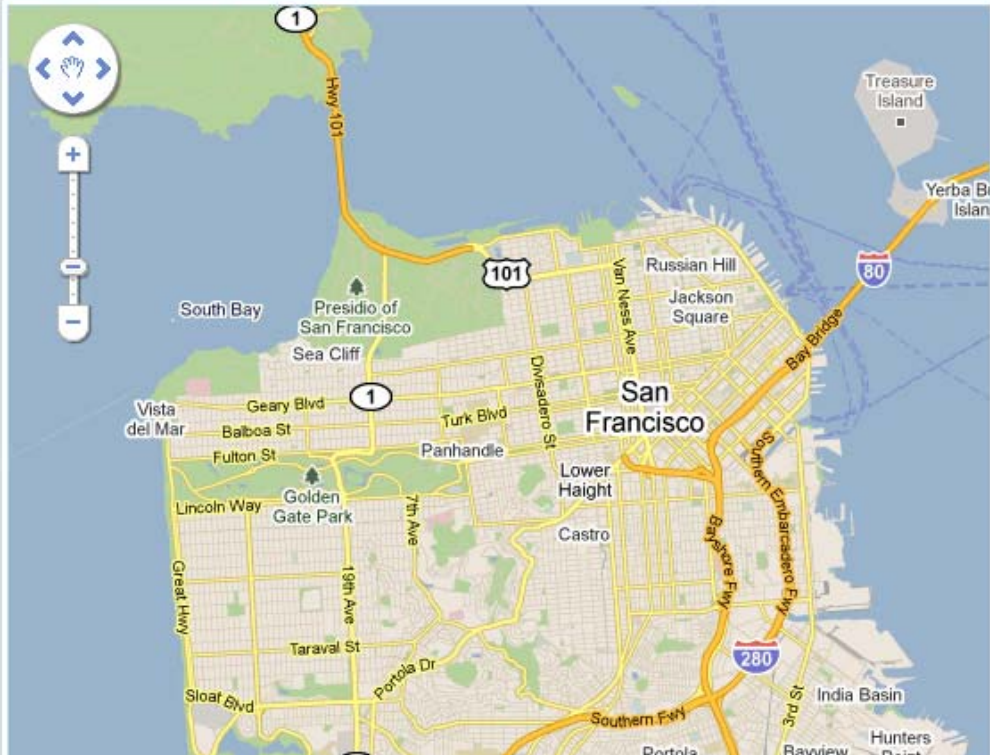
- 0 - 5%
- 6 - 10%
- 11 - 18%
- over 18%

SAN FRANCISCO
Topography, Street Slope - % Grade Change
Source: San Francisco Planning Department, 2007

Take the WalkFirst Survey: <http://walkfirstsurvey.sfplanning.org/>

Part 1: Neighborhood Walking Routes

1. Please use the map below to identify the walking routes that you typically use. Feel free to identify as many routes as you like. If you do not wish to use the map [Click HERE](#).



Instructions:

- Click on the map to start the route.
- Route Start (select **one**):
 - Home
 - Work
 - Shopping
 - School
 - Transit Stop
 - Recreation
 - Other
- Click again at every bend or corner.
- Click on the map to end the route.
- Destinations (select all that apply):
 - Home
 - Work
 - Shopping
 - School
 - Transit Stop
 - Recreation
 - Other



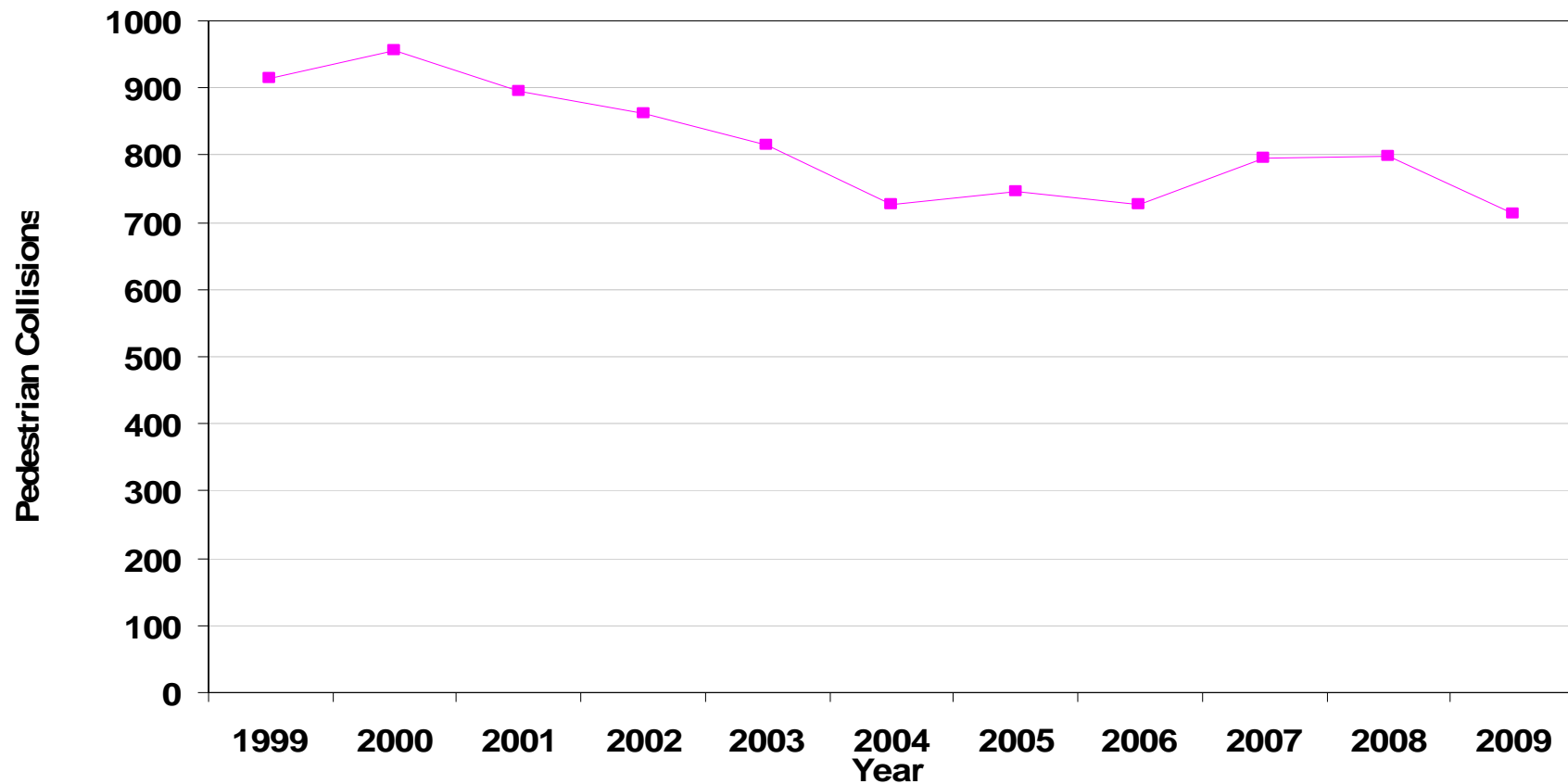
WALKFIRST

Pedestrian Safety: The Conditions People Face

Pedestrian Safety Conditions

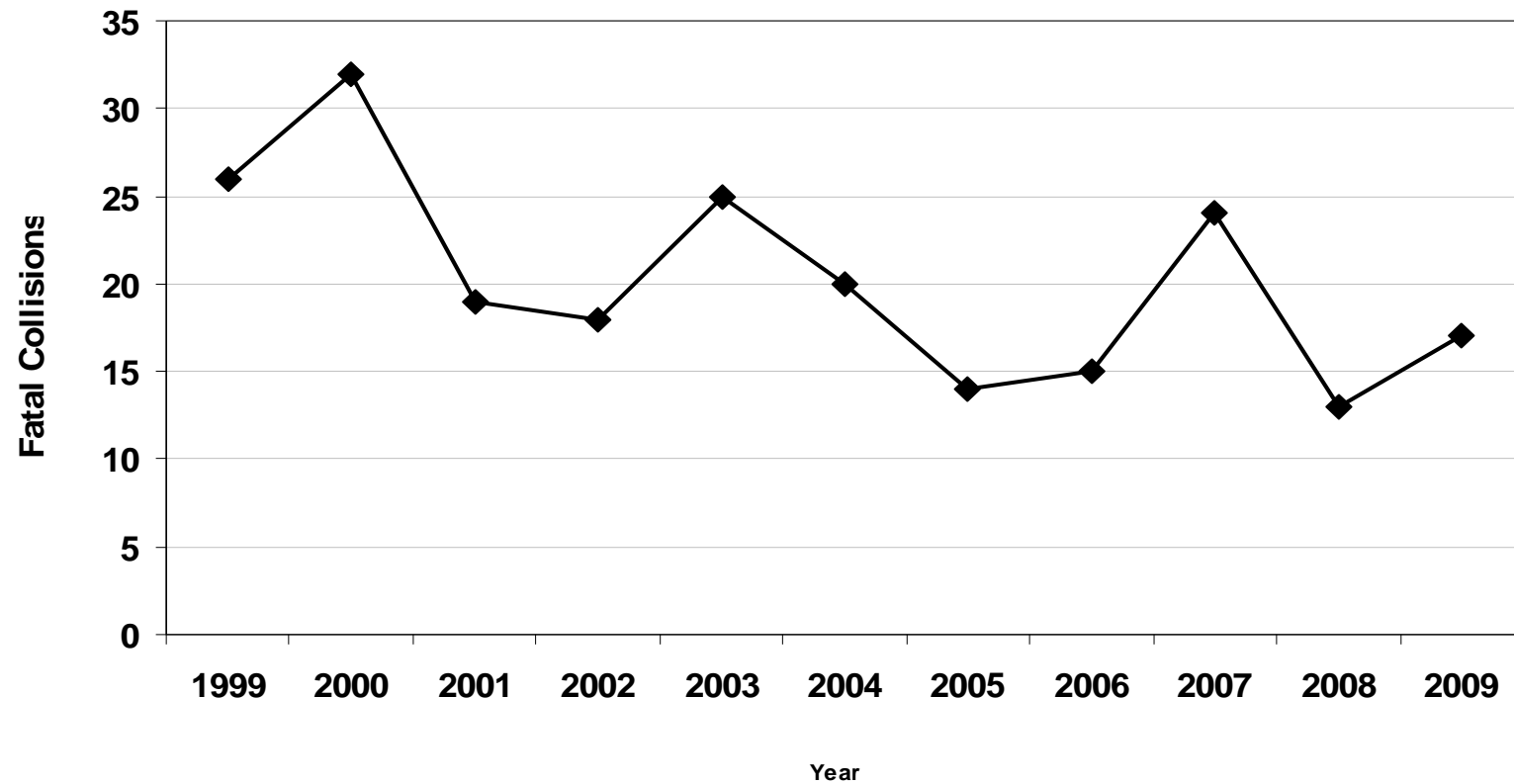
- SF Pedestrian Collisions generally declined from 1999-2009
- Injuries and Fatality Numbers are high, compared to similar cities
 - But lower than most larger CA cities when amount of walking taking into account
- Primary Collision Factors: Driver failure to yield #1 factor for injury collisions
- Highest Collision Locations concentrated especially in the Tenderloin and South of Market areas
 - Top 4 locations on the 6th St. corridor
- Safety Infrastructure Improvements underway
 - Signs, signals, striping
 - Street redesign

Injury Collisions Involving Pedestrians 1999-2009



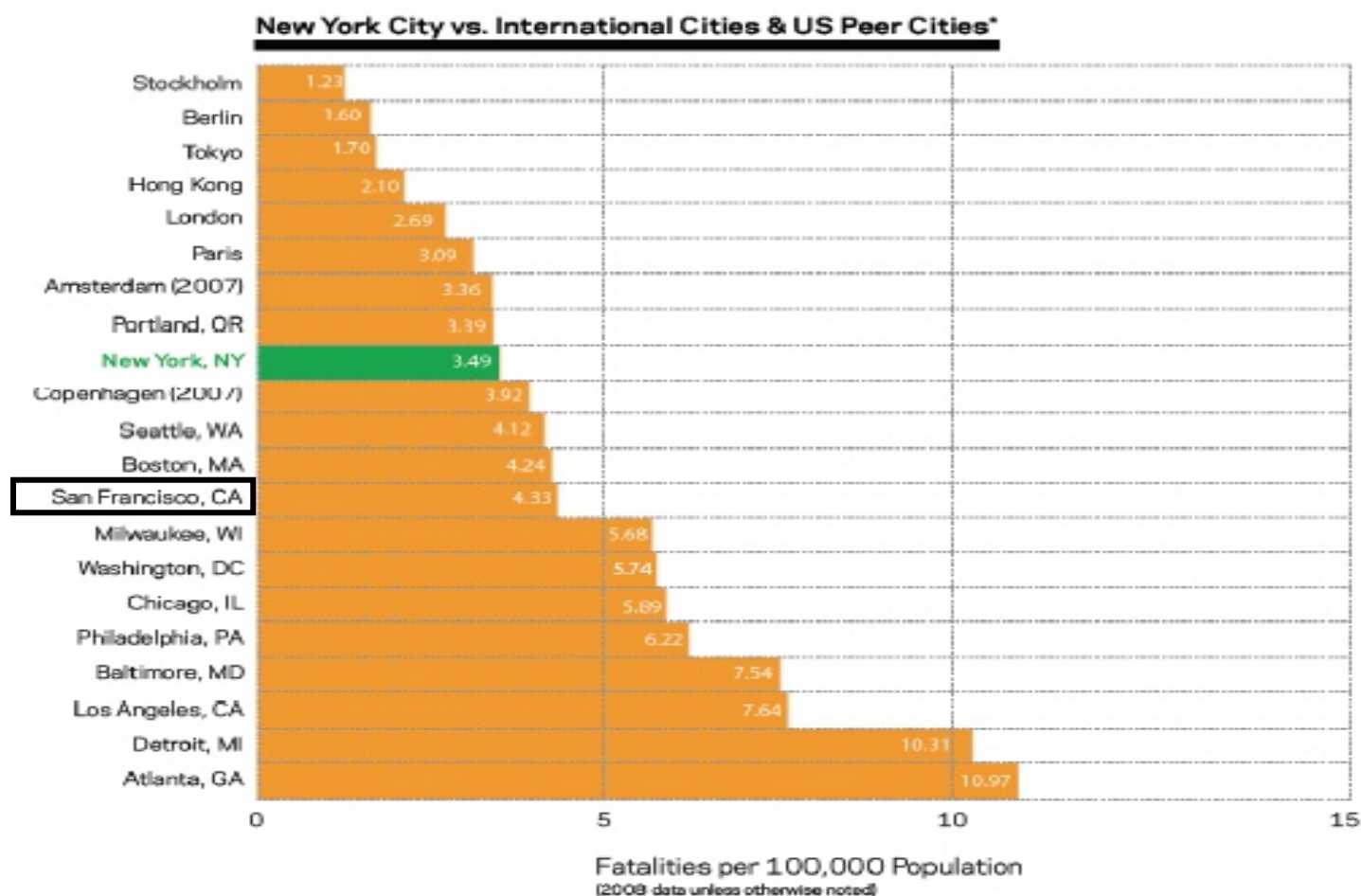
Source:: CHP, Statewide
Traffic Records System
(SWITRS)

Fatal Pedestrian Collisions 1999-2009



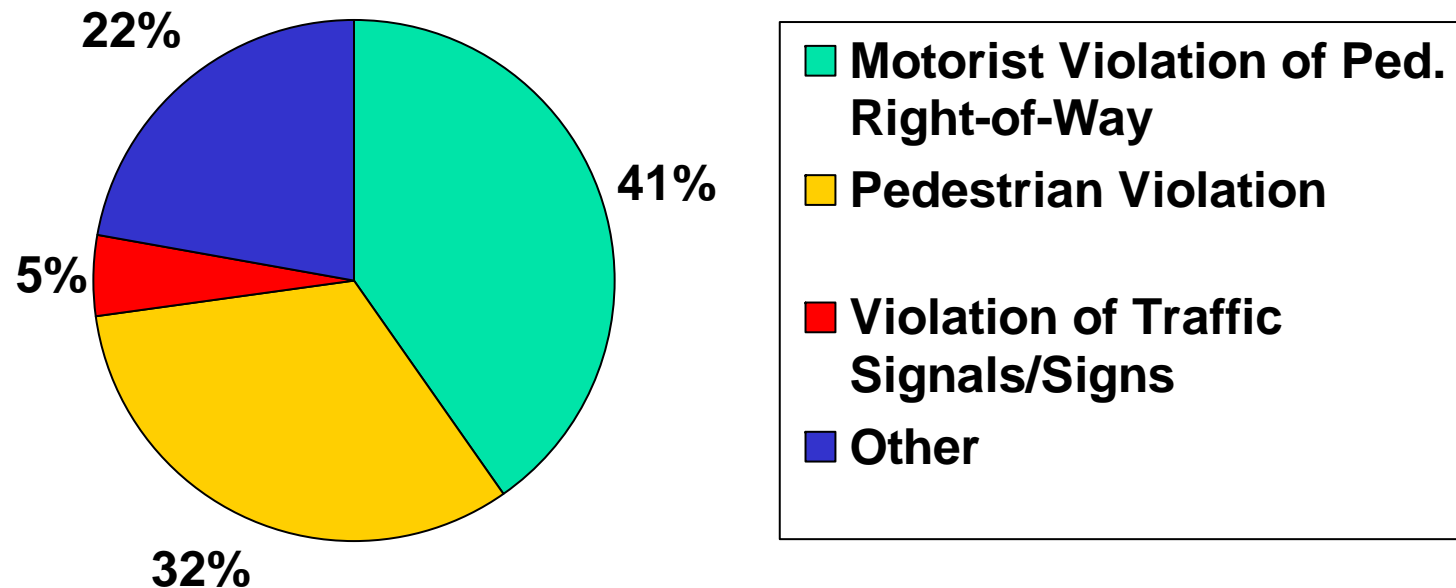
Source: CHP, Statewide Traffic Records System

Traffic Collision Fatality Rates Per Capita: 2008



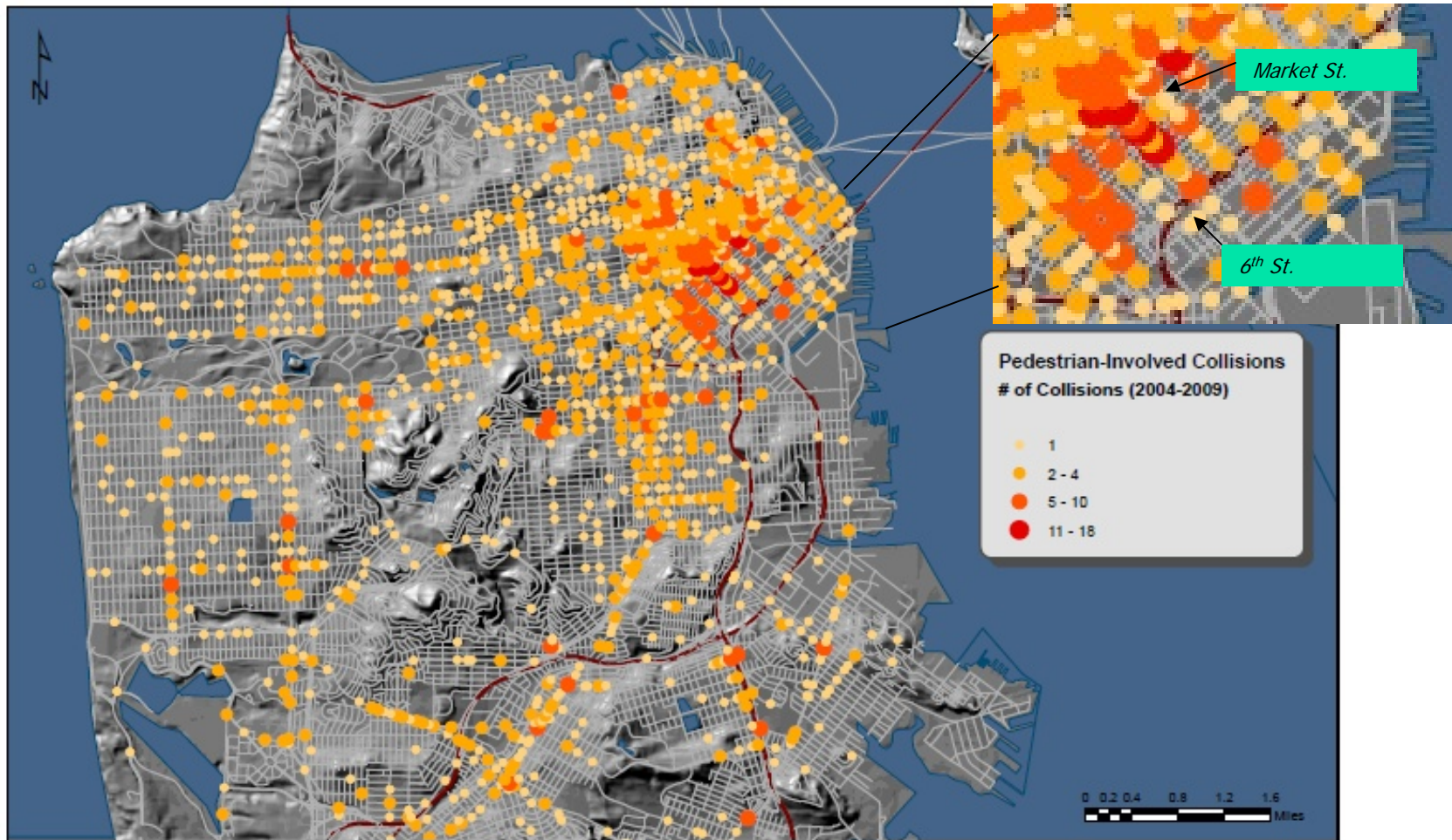
Source: New York City Pedestrian Safety Study and Action Plan, August 2010, pg.7

Pedestrian Injuries and Fatalities: Primary Collision Factors, 2008



Source:
CHP,
SWITRS

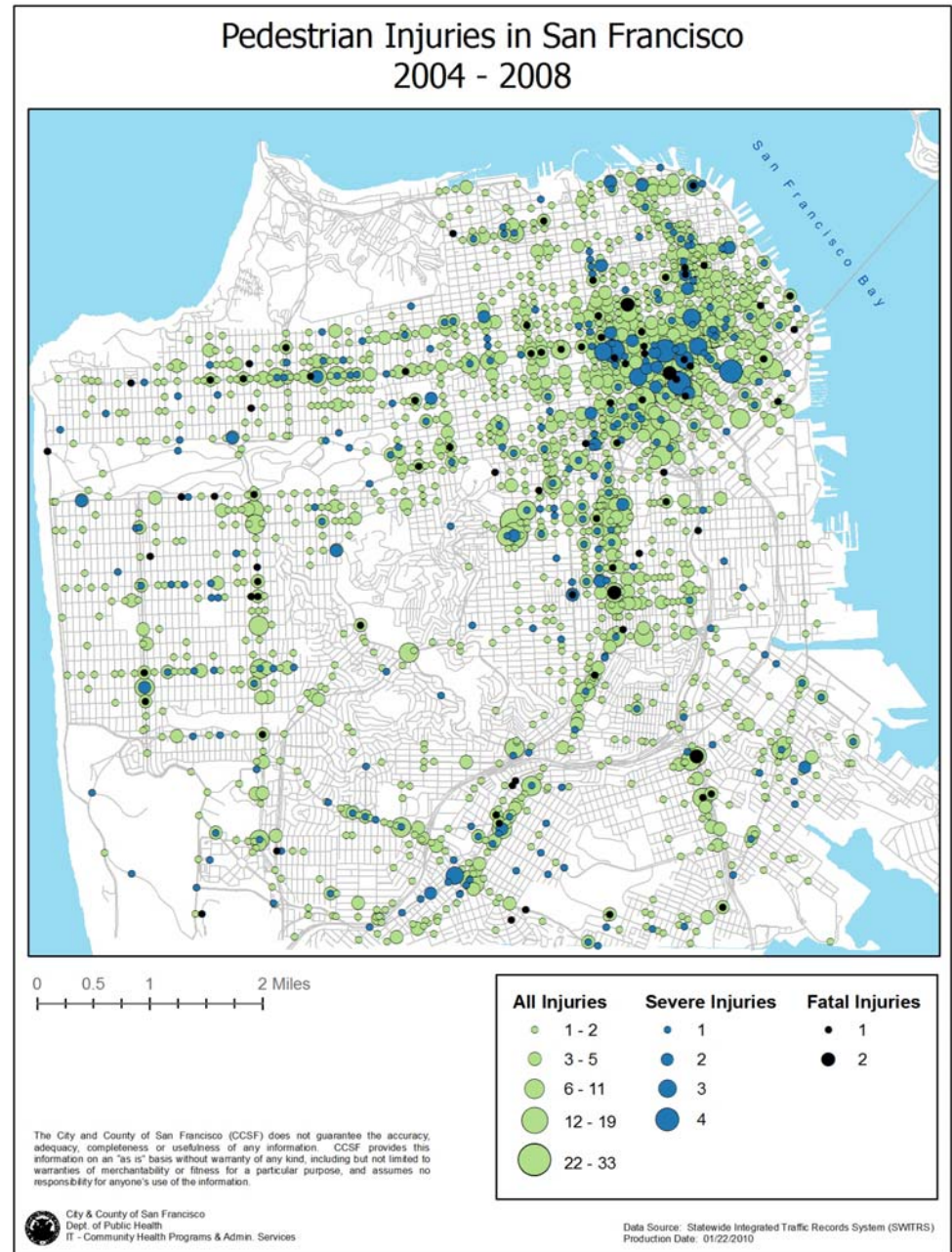
Pedestrian Collisions



Source: Fehr & Peers, SWITRS.

Pedestrian Injuries

- Most interested in severe and fatal injuries



Pedestrian Safety Physical Improvements for Preliminary Capital Projects List

- Sidewalk Widening
- Sidewalk Buffers
 - Planting Strips
 - On-Street Parking
 - Bike Lanes
- Curb Ramps
- Stop Signs
- Traffic/Pedestrian Countdown Signals
- Crosswalk Visibility Improvements
 - Continental Crosswalks
 - Advance Yield Lines
- Speed Humps
- Curb Bulb-outs
- Accessible (audible) Pedestrian Signals
- In-Pavement Crosswalk Lights and Flashing Beacons
- “Pedestrian Scramble” Phasing
- Street Lighting
- Street Trees
- Median Refuge Islands



Stay involved!

- **Monthly presentations at PSAC**
- **Take our survey:** available online at walkfirst.sfplanning.org
- **Join the mailing list for updates:** send an email to walkfirst@sfgov.org



For more information visit:
<http://walkfirst.sfplanning.org>



Email us at:
walkfirst@sfgov.org

Thank you!



For more information visit:
<http://walkfirst.sfplanning.org>



Email us at:
walkfirst@sfgov.org