

Plan Goals and Outcomes



GUIDE FUNDING

The Plan will identify and scope projects, provide concept designs and preliminary project costs to better inform funding decisions.



REFLECT PRIORITIES

The Plan should reflect the project priorities of local residents, business operators, and neighborhood organizations.



AGENCY COORDINATION

The Plan will provide a platform for coordination between different government and nonprofit agencies.



BETTER CONNECTIONS

The plan can address critical linkages between parks, the waterfront, and other open spaces that are incomplete or disjointed.



INTEGRATED DESIGN

The plan can ensure that all public space projects, large and small, receive attention that produces a high standard of design and execution.



APPROPRIATE LIGHTING

Lighting throughout the neighborhood is inconsistent, with many areas lacking basic nighttime illumination.



IMPLEMENTATION PLANNING

The plan will include an implementation plan and cost estimates reflecting local priorities and availability of programmed funds.



BETTER SIDEWALKS

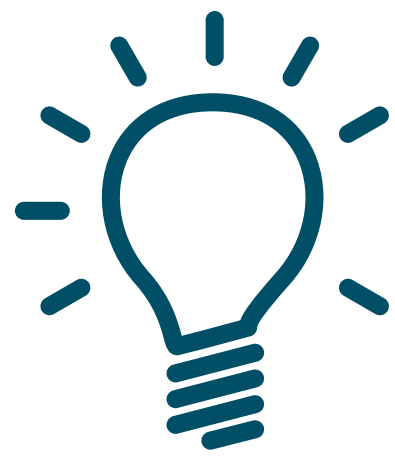
Many streets have substandard sidewalks. Many street segments rank low on the City's Pavement Condition Index (PCI).



SAFER CROSSINGS

The neighborhood has relatively high number of intersections ranking in the highest-risk categories for pedestrian collisions and injuries.

Plan Outputs



IDENTIFY PROJECTS

Through a robust community engagement process, finalize a prioritized list of streetscape, open space, and other public realm projects.



ESTIMATE COSTS

Provide robust cost estimates for each of the projects identified in the plan.



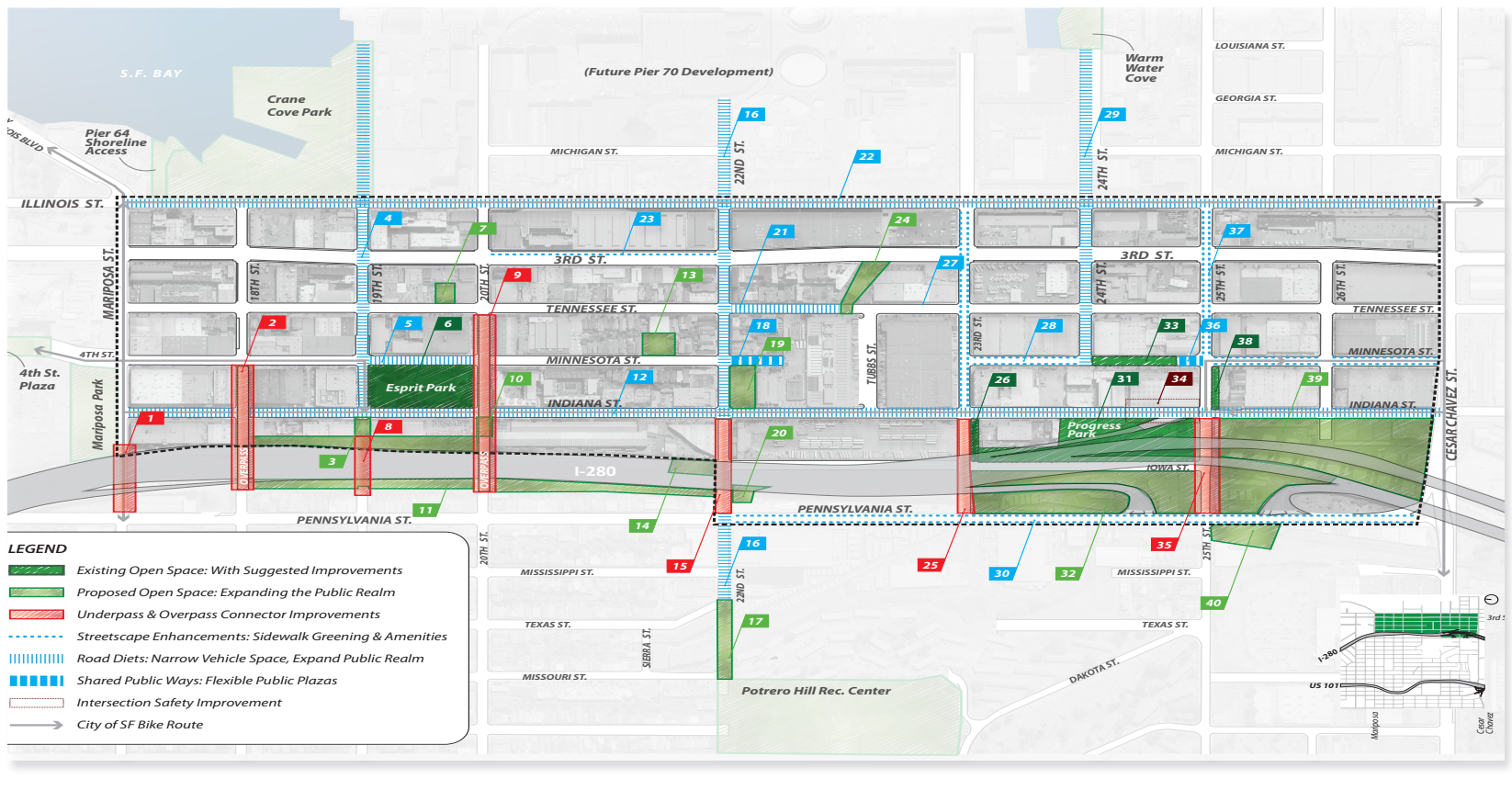
DEVELOP DESIGNS

Working with neighborhood residents, businesses, and property owners, produce detailed design for the highest priority projects. Develop conceptual designs for the remaining projects.

Related Planning Efforts



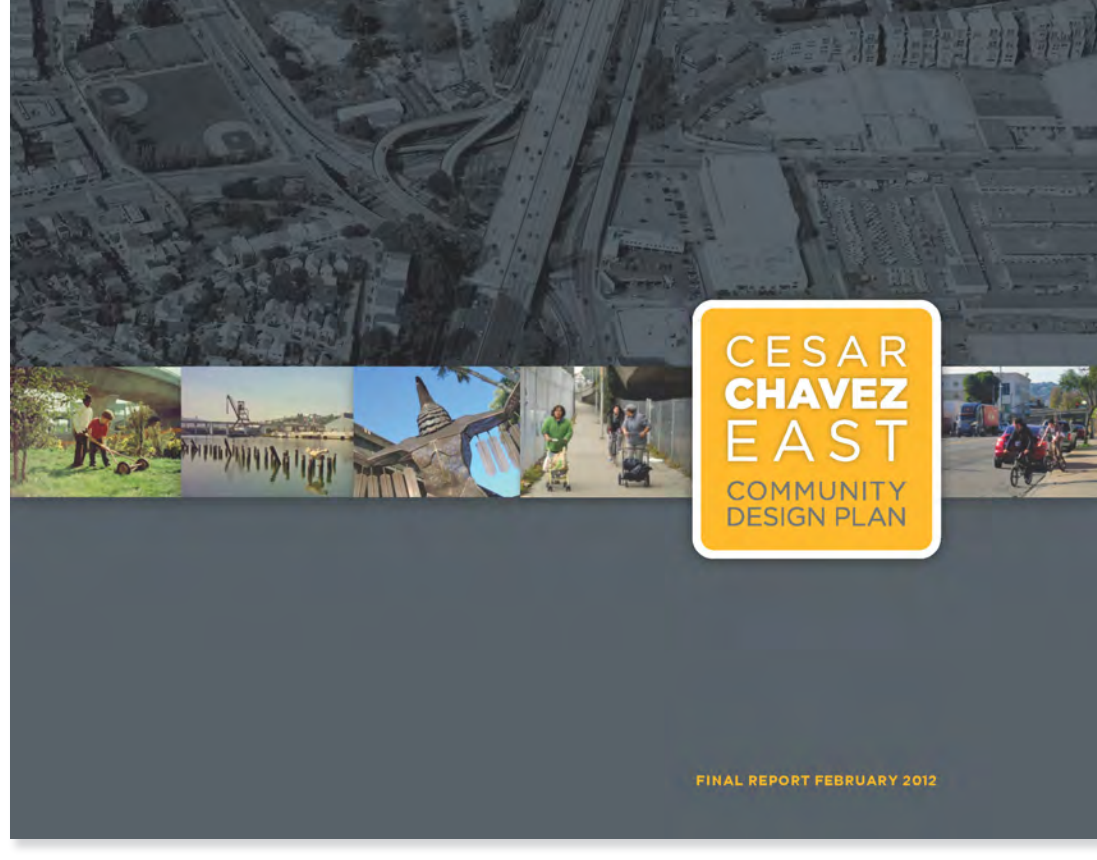
Green Connections
City of San Francisco
March 2014



Dogpatch - Northwest Potrero GBD
Management Plan and Green Vision Plan
November 2013



Bicycle Strategy
SFMTA
April 2013



Cesar Chavez East
Community Design Plan
SF Planning, February 2012



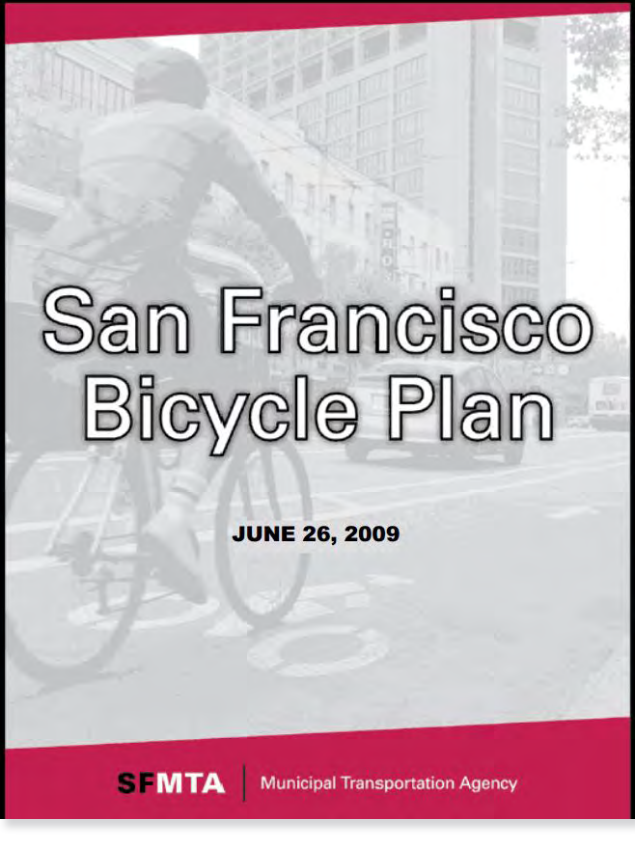
Blue Greenway Planning and
Design Guidelines
Port of SF, July 2012



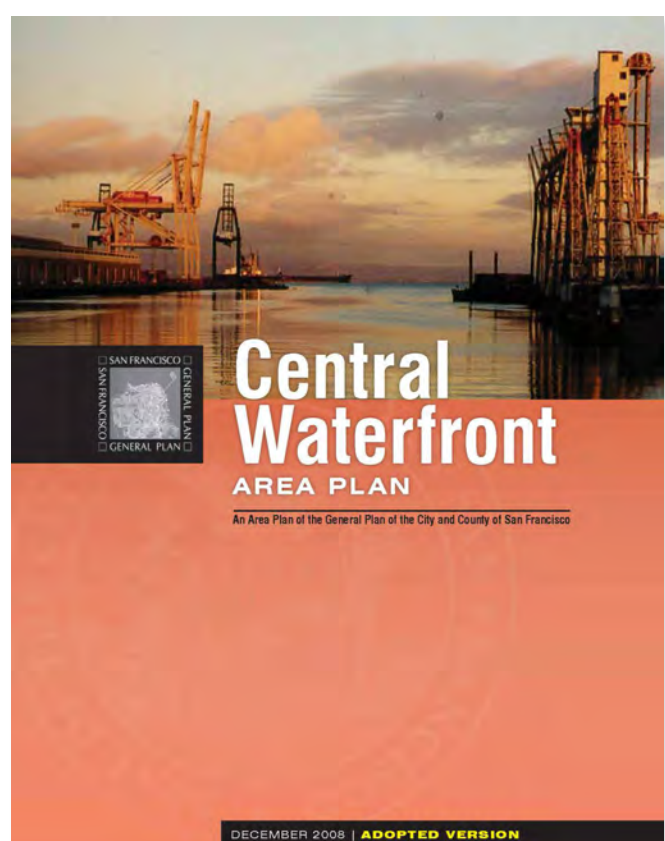
22nd Street Greening Master Plan
Green Trust SF
May 2011



San Francisco Better Streets
City of San Francisco
June 2010



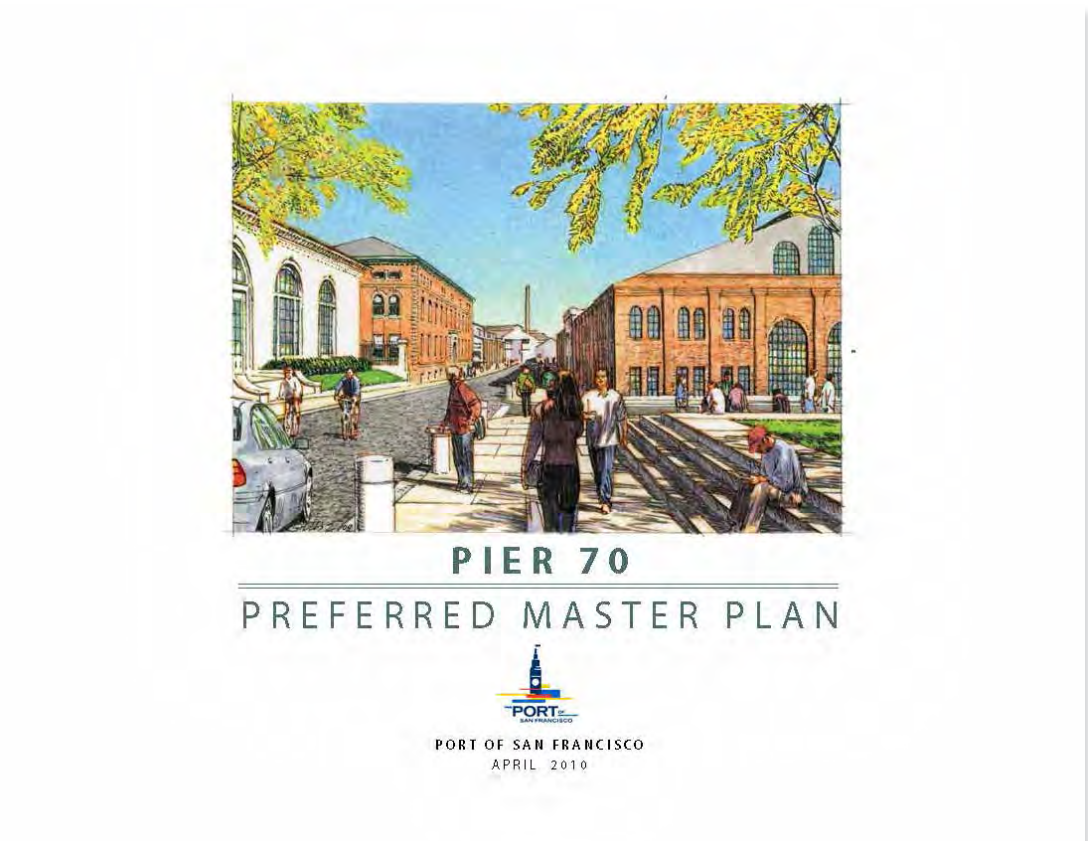
SF Bicycle Plan
SFMTA
June 2009



Central Waterfront Area Plan
SF Planning
December 2008



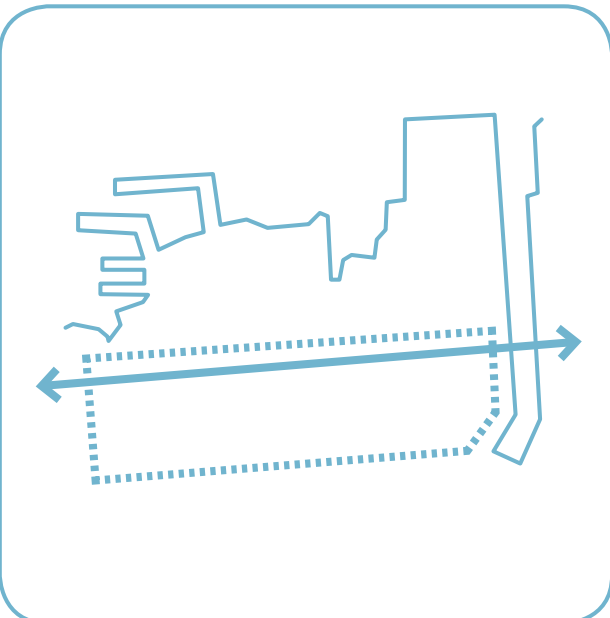
Eastern Neighborhoods
SF Planning
August 2008



Pier 70 Preferred Master Plan
Port of SF
April 2010

Timeline

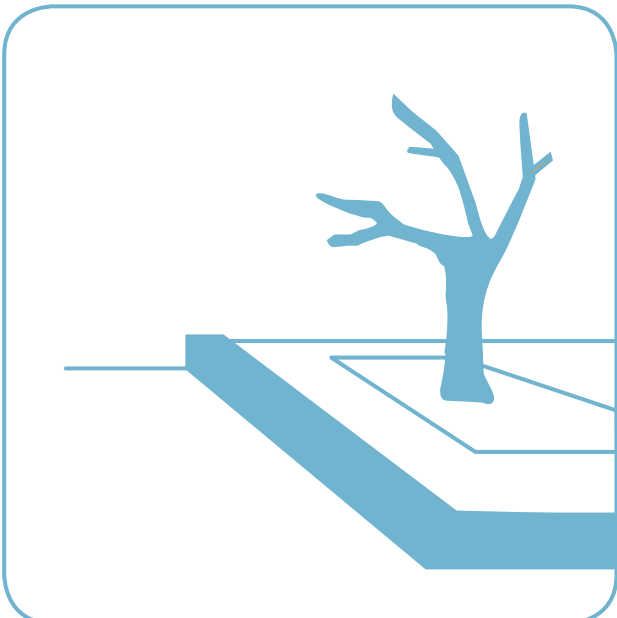
1 Summer 2015



BEGIN OUTREACH AT COMMUNITY GROUP MEETINGS

Planning Department begin outreach at DNA, PDMA, Potrero Boosters, CWAG, DPNWP GBD, and other regular stakeholder meetings. Launch Neighborhood, an online polling and public feedback site.

2 February 2016



EXISTING CONDITIONS DOCUMENTATION

Gather information about private development, public planning projects, and the state of streets and sidewalks. Identify opportunities and constraints for public realm plan projects in Dogpatch. Coordinate between City Agencies.

3 March 2016

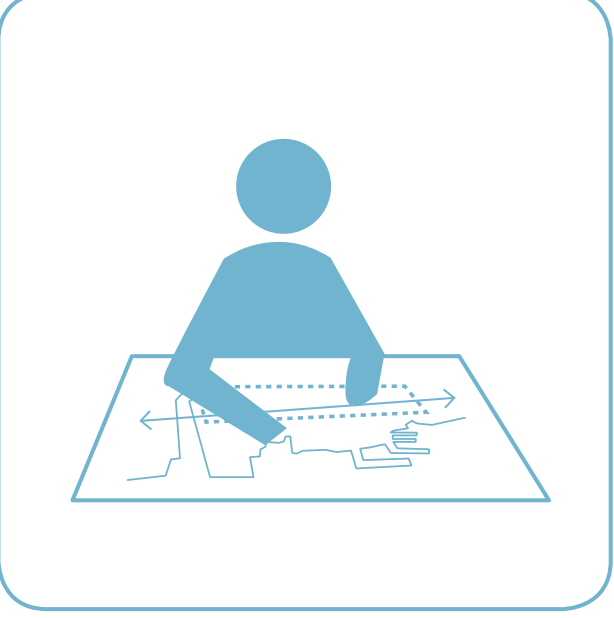


IDENTIFY PRIORITIES

Collect oral histories, and hold focus groups.

Public Workshop #1
Gather community input to identify priority projects for Dogpatch.

4 April 2016

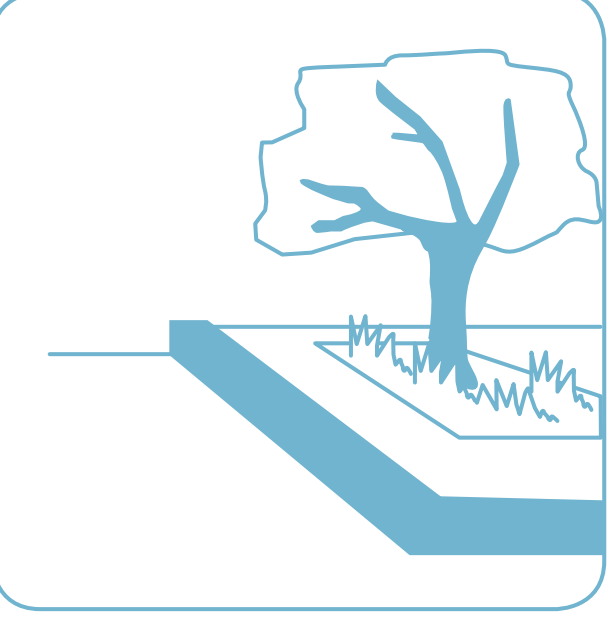


DEVELOP DESIGN IDEAS

Public Workshop #2
Report back on results from Workshop #1.

Present ideas for design strategies. Collect community feedback on preferences.

5 May 2016

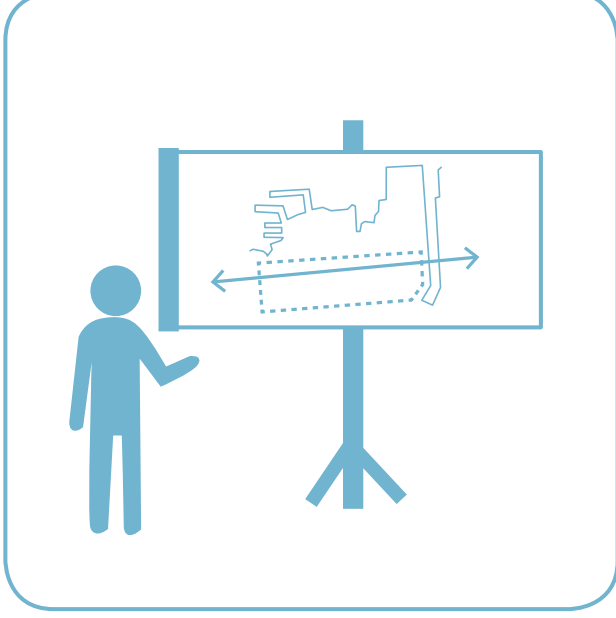


FINALIZE DESIGNS

Conduct feasibility analyses with MTA, Recreation and Parks, Port of SF, Public Works, and others. Develop design options for priority projects.

Public Workshop #3
Collect public input on design options.

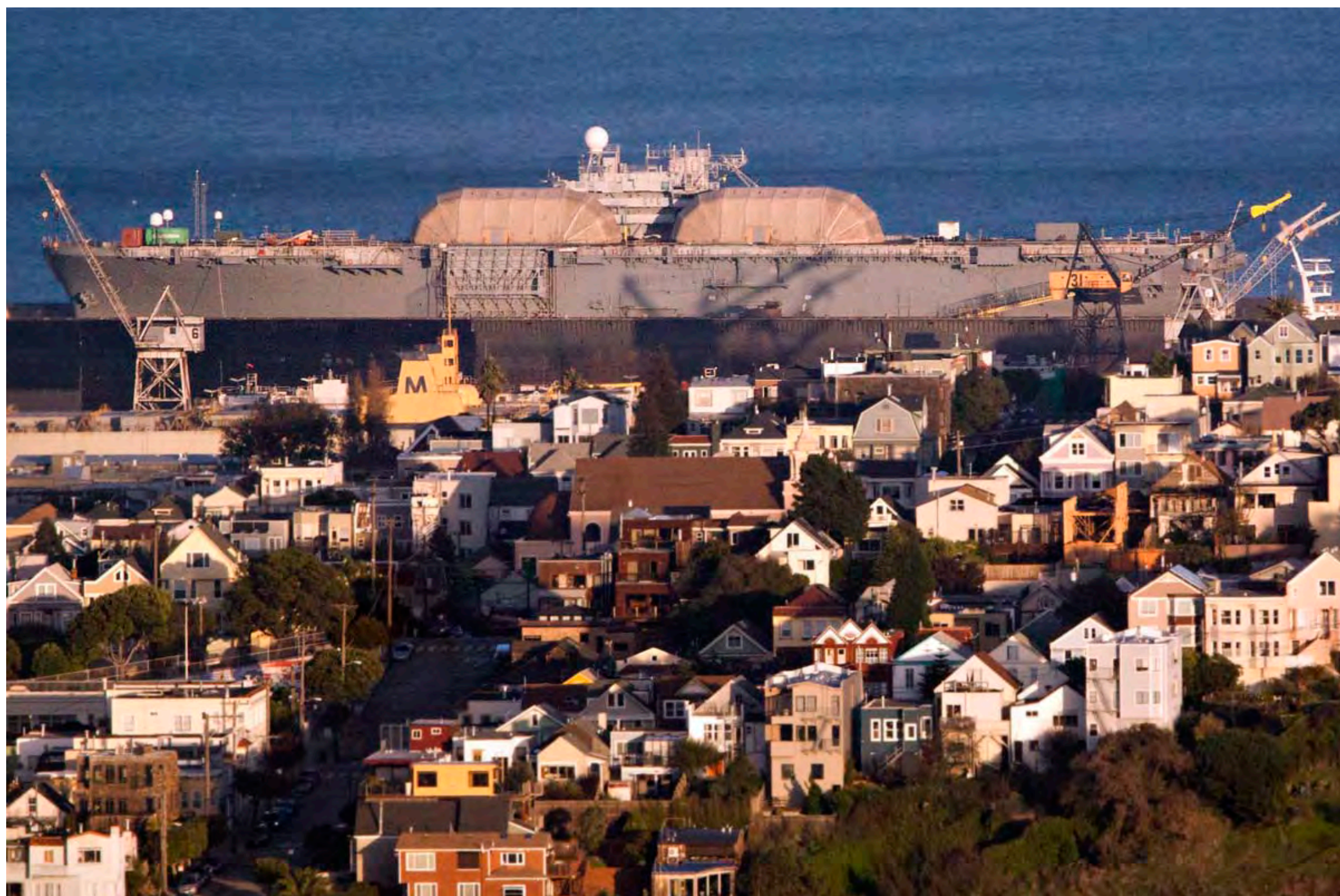
6 June 2016



RELEASE AND ADOPTION

Develop cost estimates for preferred designs. Finalize an implementation plan for all public realm projects.

Begin using the plan as an instrument for funding and building projects.



PROJECT OVERVIEW



WORKSHOP #1
DATE: MARCH 09 2016
LOCATION: SMOKESTACK



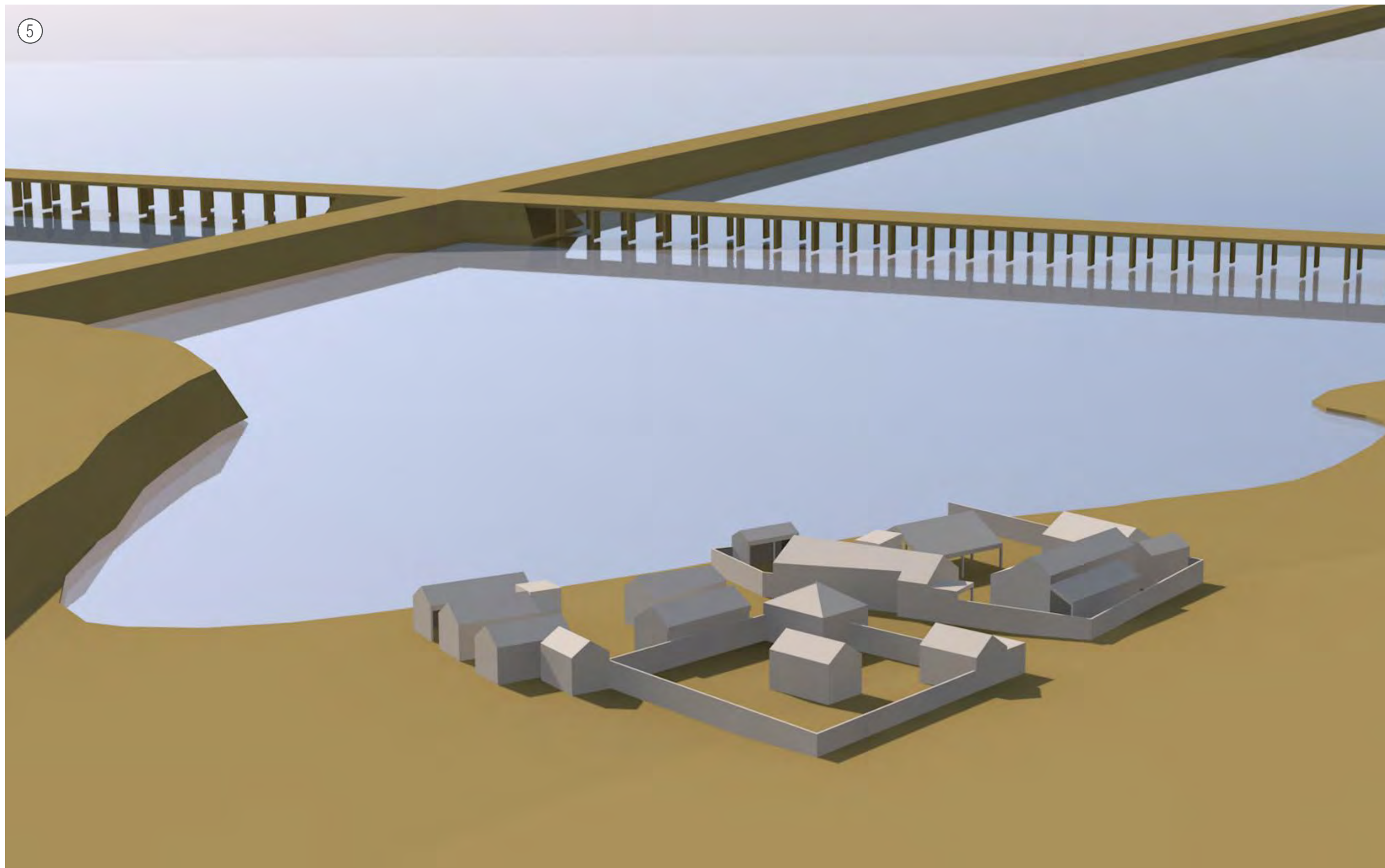
World War I, Bethlehem Workers



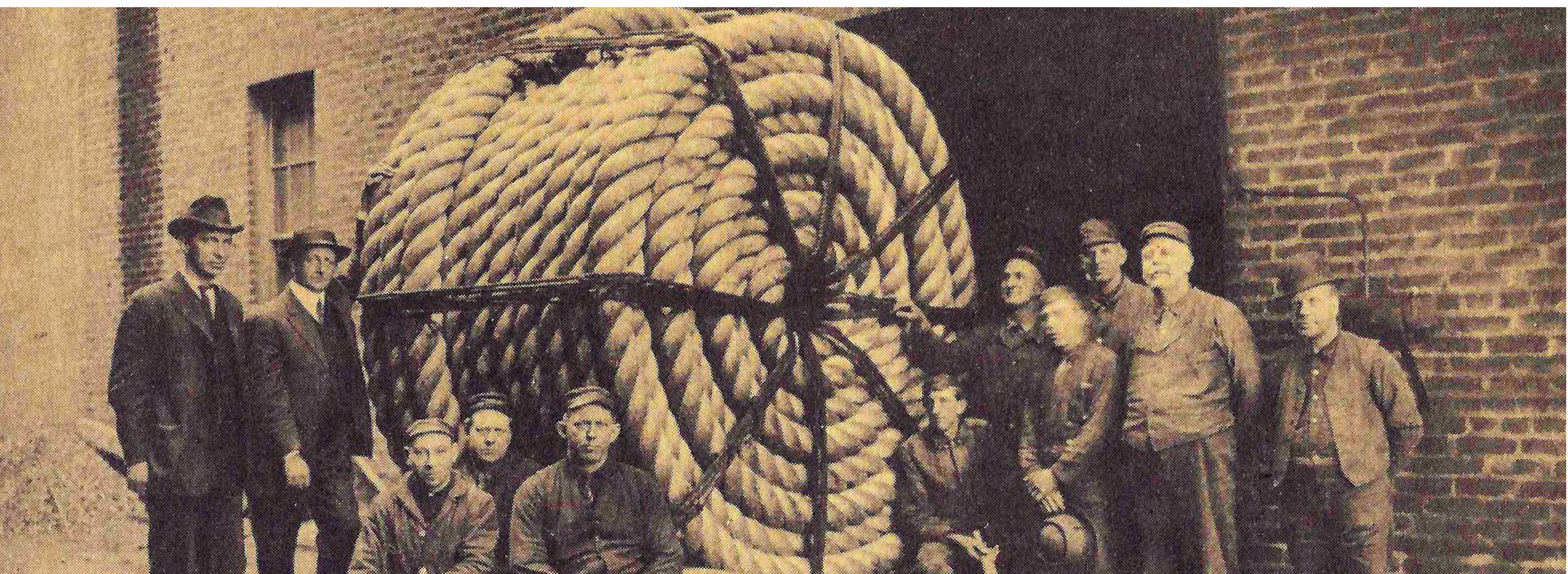
1942 Bethlehem Ship Yard



Bethlehem Steel forge workers



c. Lym Family Compound



Tubbs Cordage Employees



1890 Irish Hill



1862 photo of Potrero Point at Illinois St. and 19th.



1906 = shift change at the intersection of 3rd (then Kentucky St.) and 20th (then Napa)



1870 Boatyard at Potrero Point



1870 Boys fishing off of Long Bridge



1929 American Can Company



Tubbs Cordage worker houses



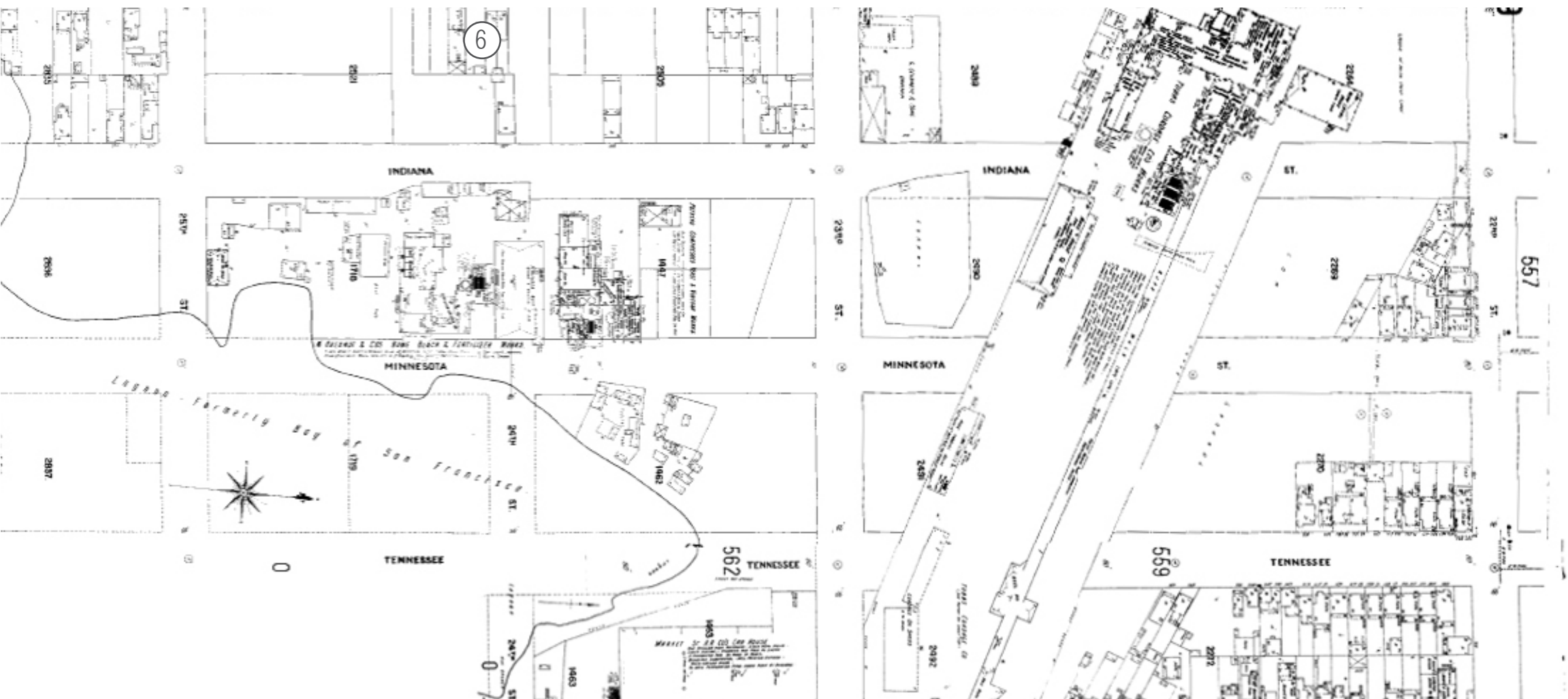
PG&E Biologist- Jim Adams



1955 Potrero Police Station



1243-45 Minnesota



1899-1900 Sanborn Map



1927 19th Street viaduct as pedestrian-only bridge



DOGPATCH THEN

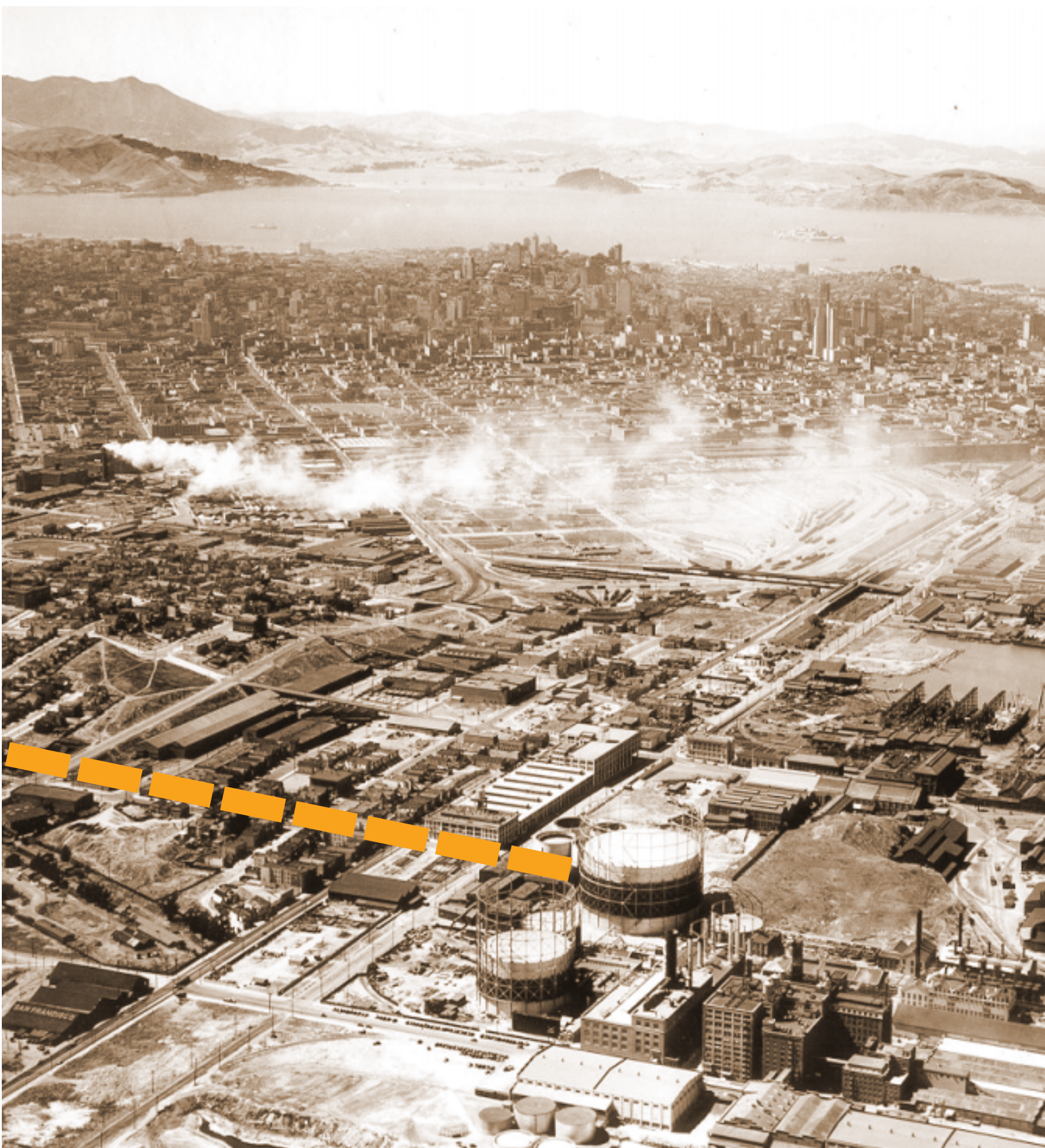
San Francisco Planning



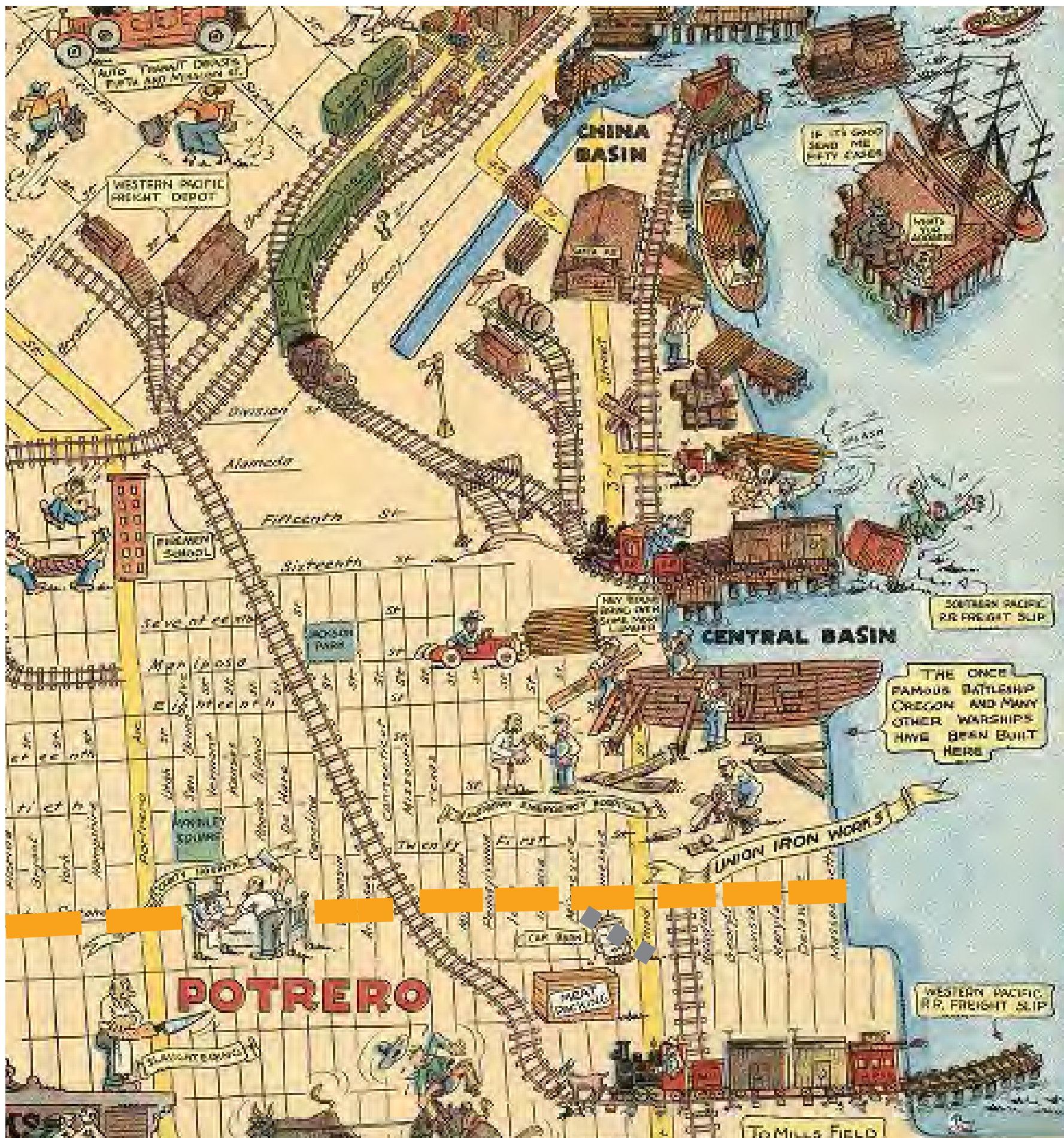
WORKSHOP #1
DATE: MARCH 09 2016
LOCATION: SMOKESTACK



1946 Aerial



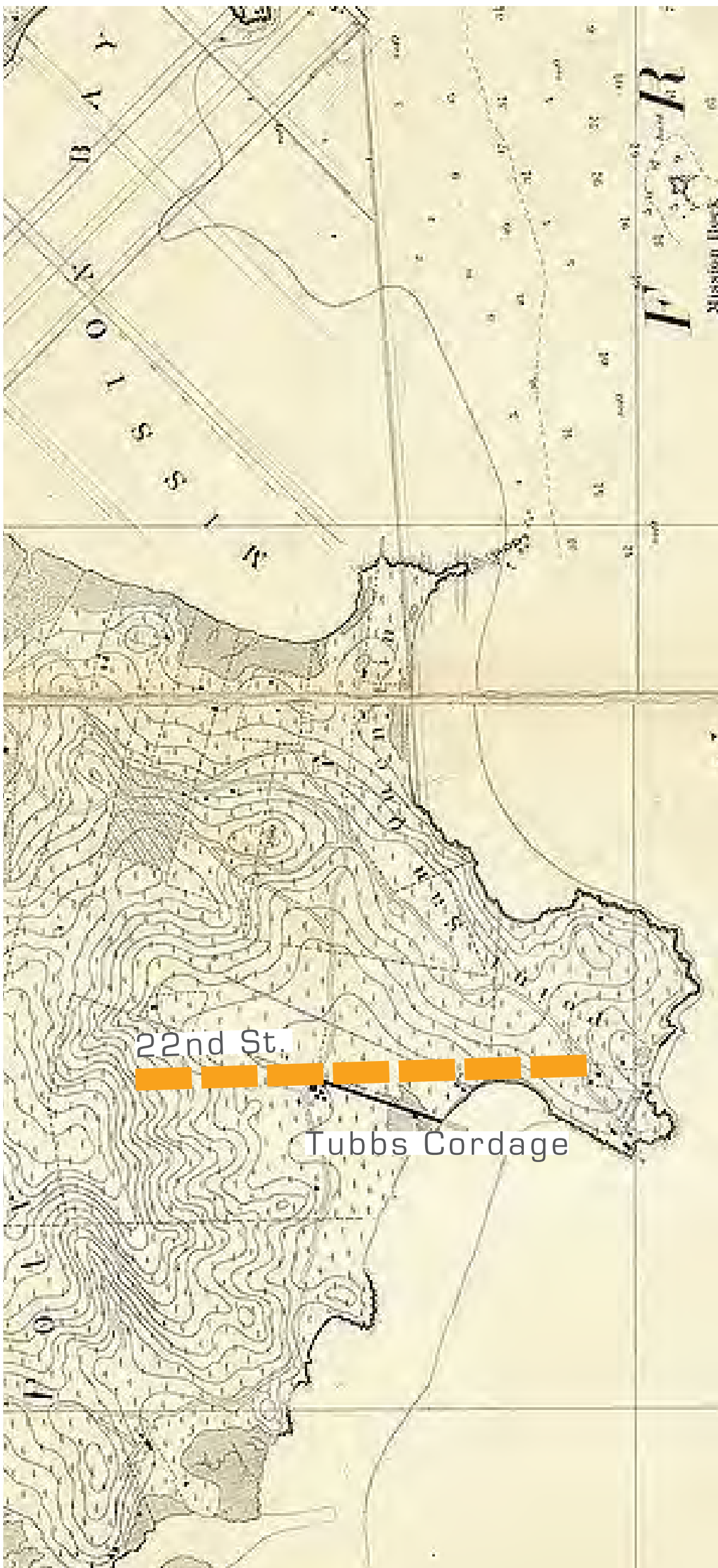
1929 Birdseye



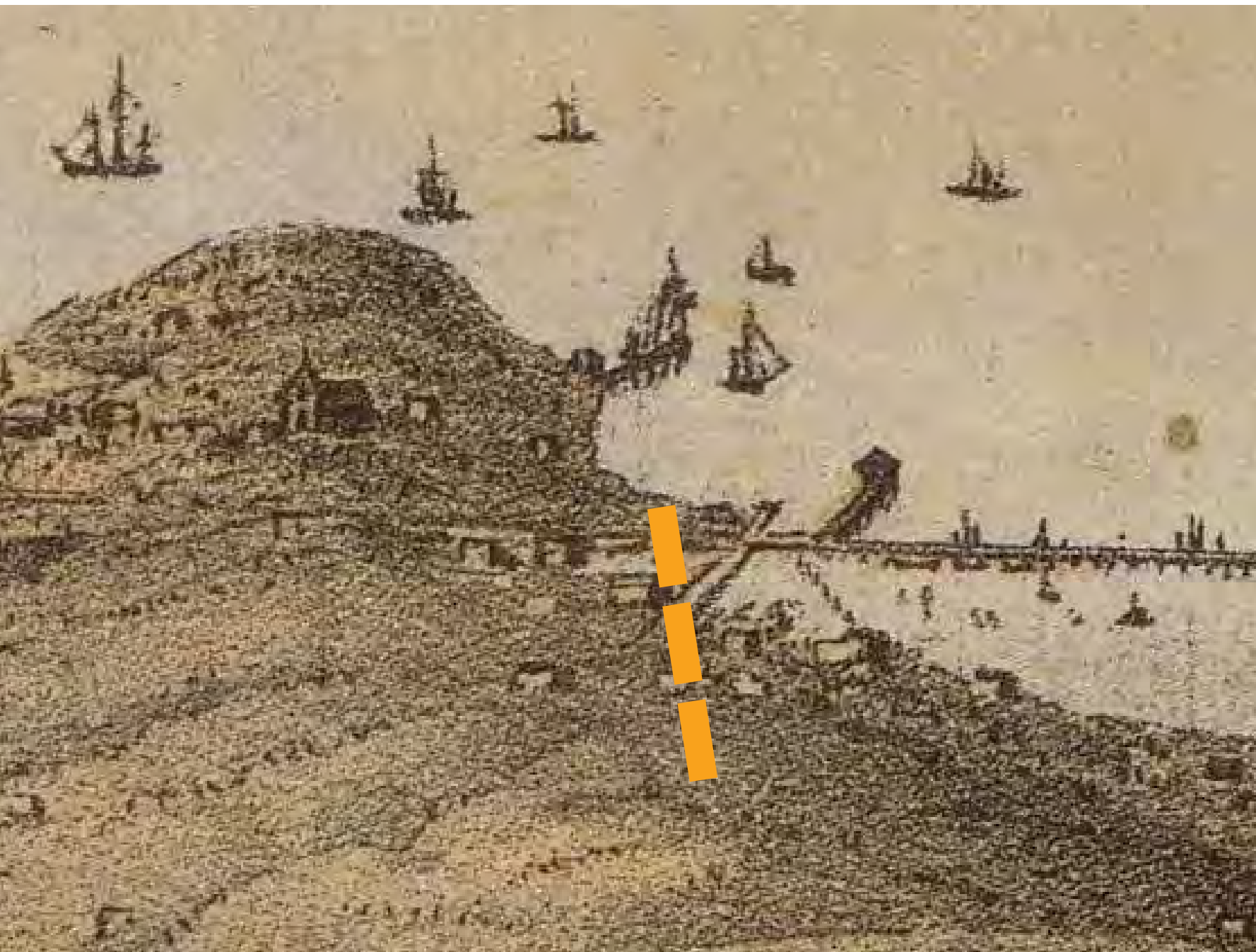
1927 Map of San Francisco



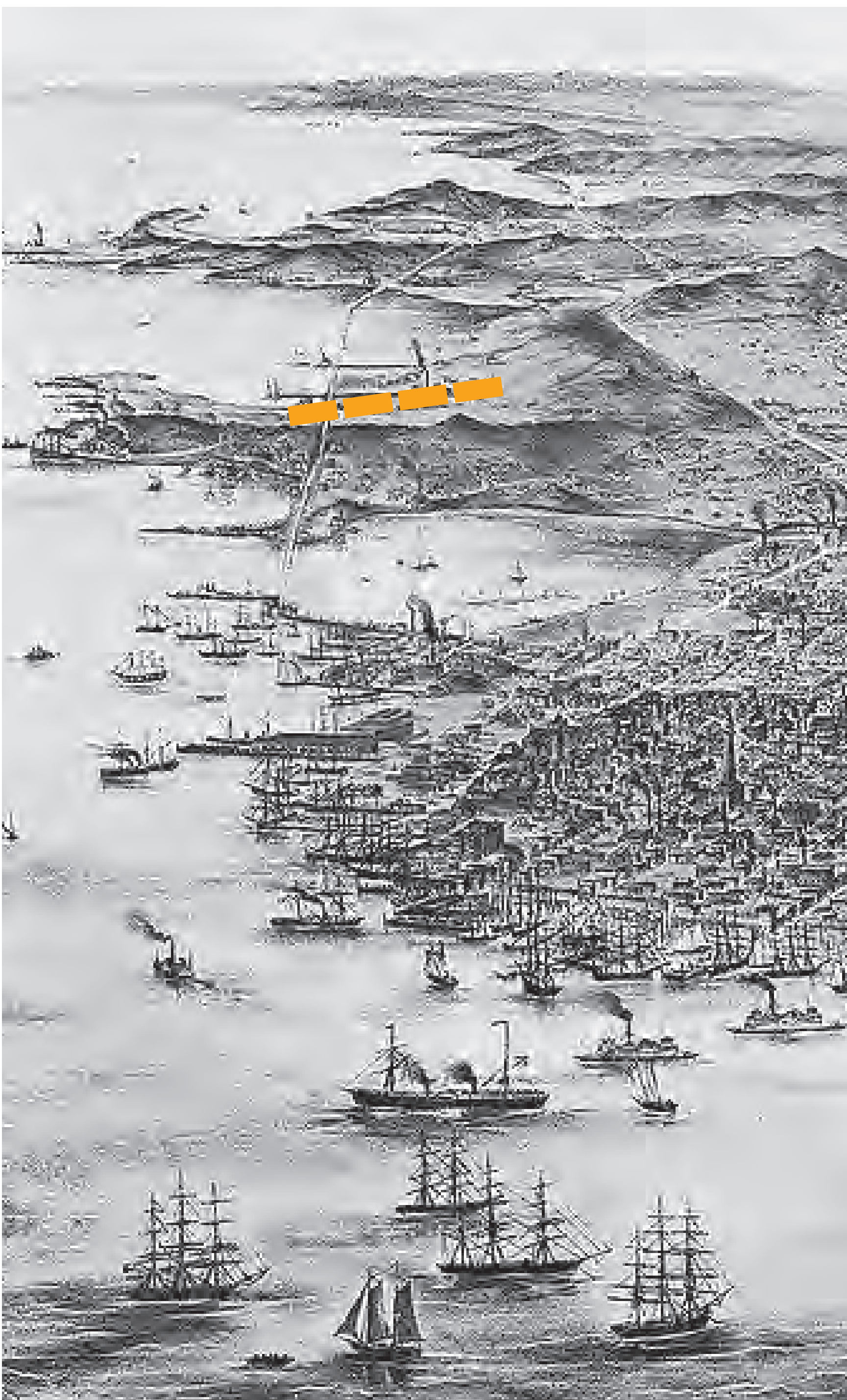
Survey



1859 USGS Coastal Survey Map



1868 bird's eye, looking from the west.



1868 Sketch of San Francisco Shoreline



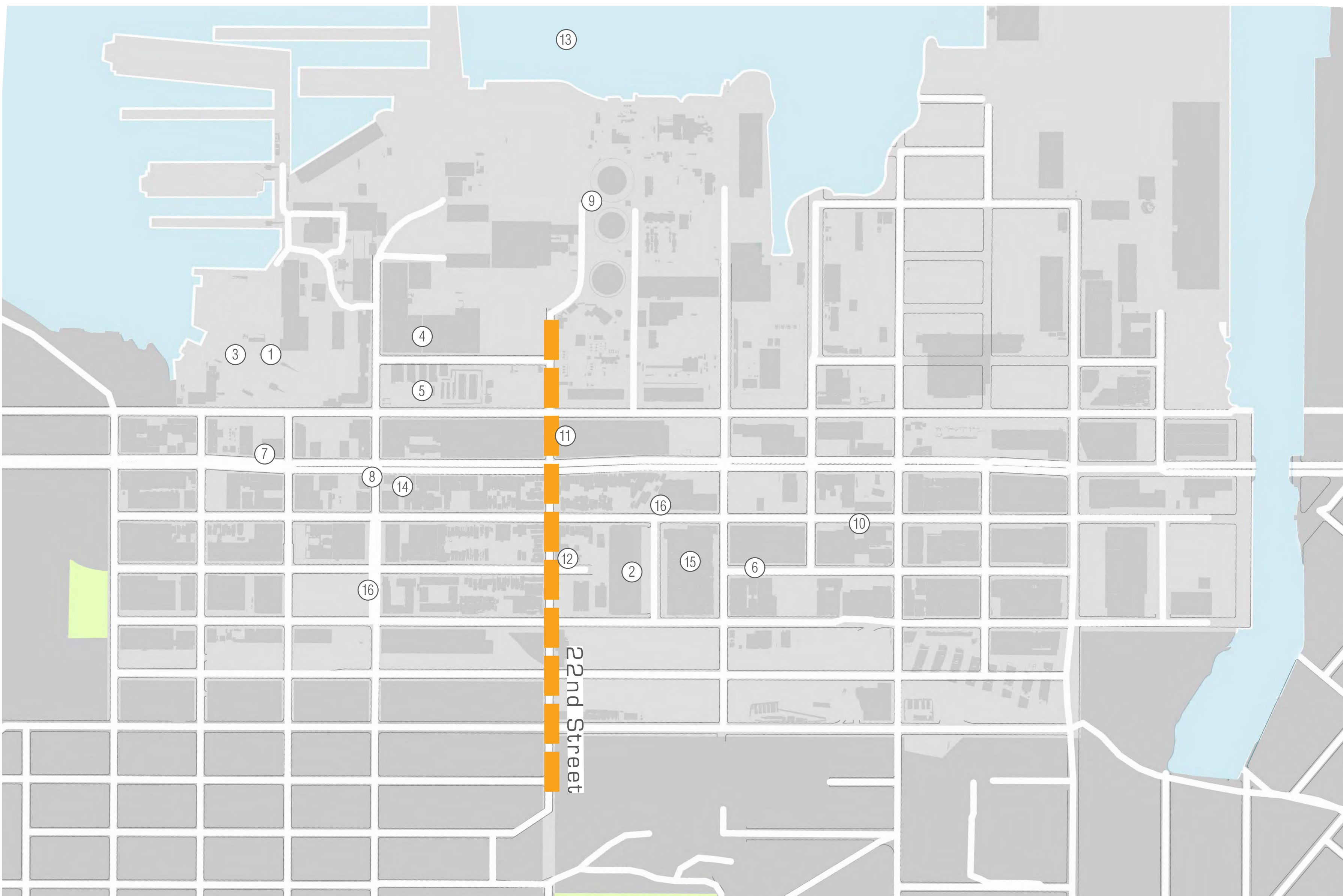
1869 Salt Marsh Tidelands auction map



San Francisco's eastern shoreline and the Long Bridge



1865 illustration of San Francisco's historic Dogpatch neighborhood



Dogpatch Overview



DOGPATCH THEN

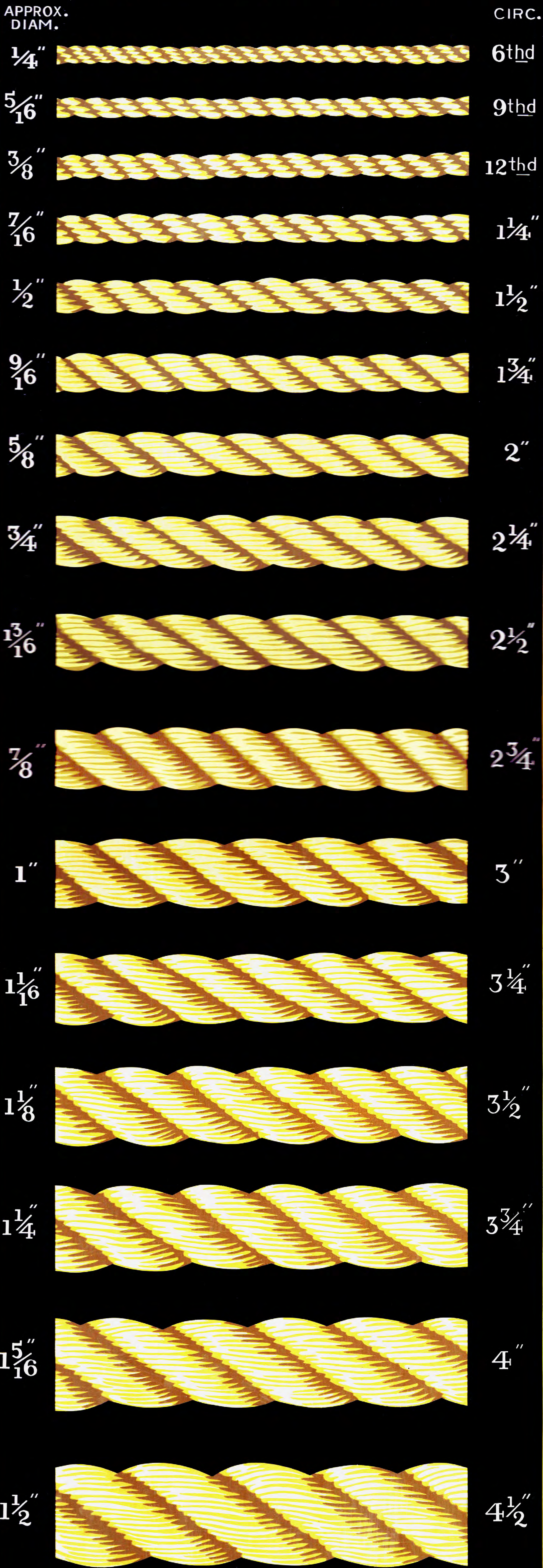
San Francisco
Planning



WORKSHOP #1
DATE: MARCH 09 2016
LOCATION: SMOKESTACK

TUBBS CORDAGE CO.

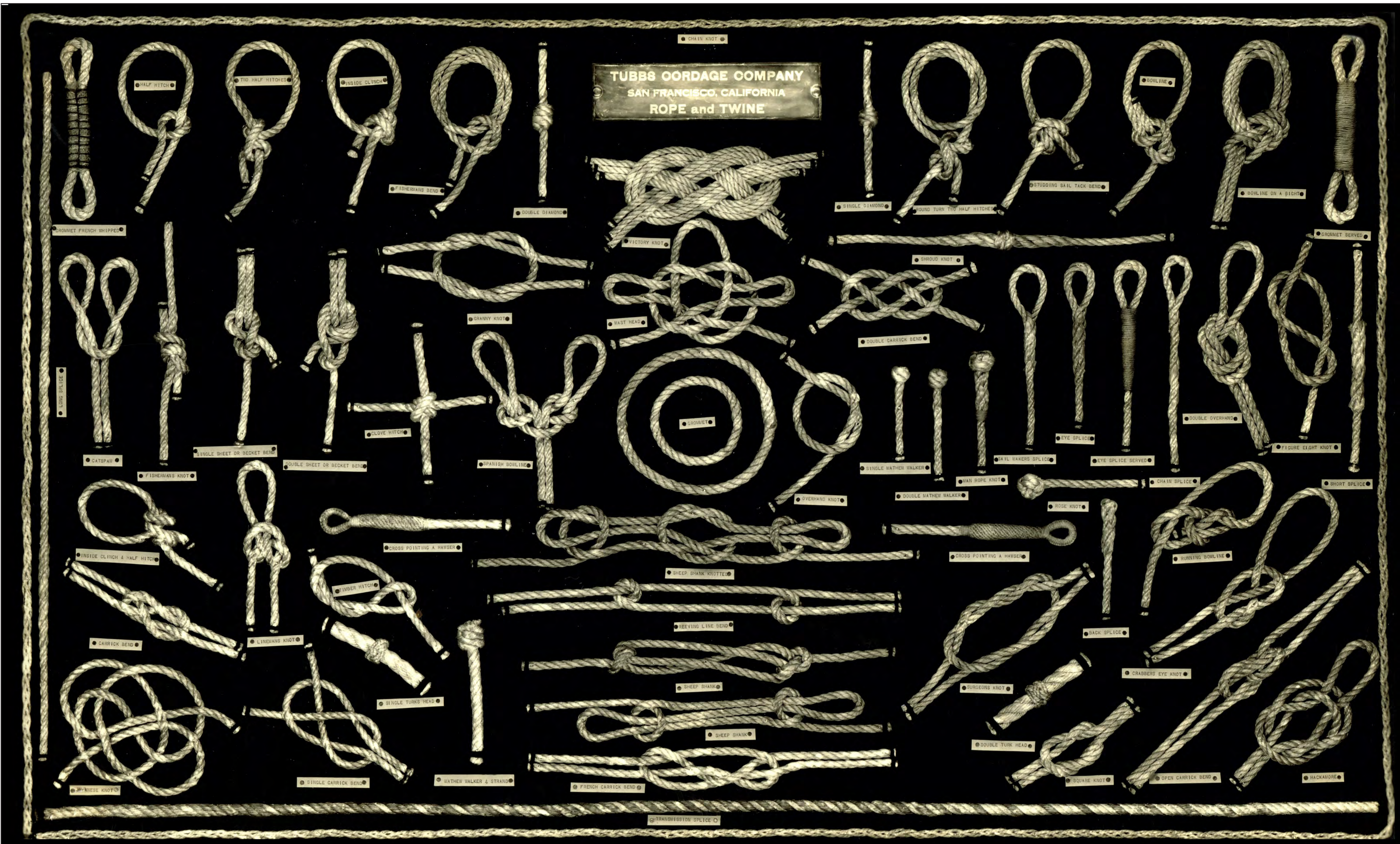
SAN FRANCISCO SEATTLE
TUBBS ROPE



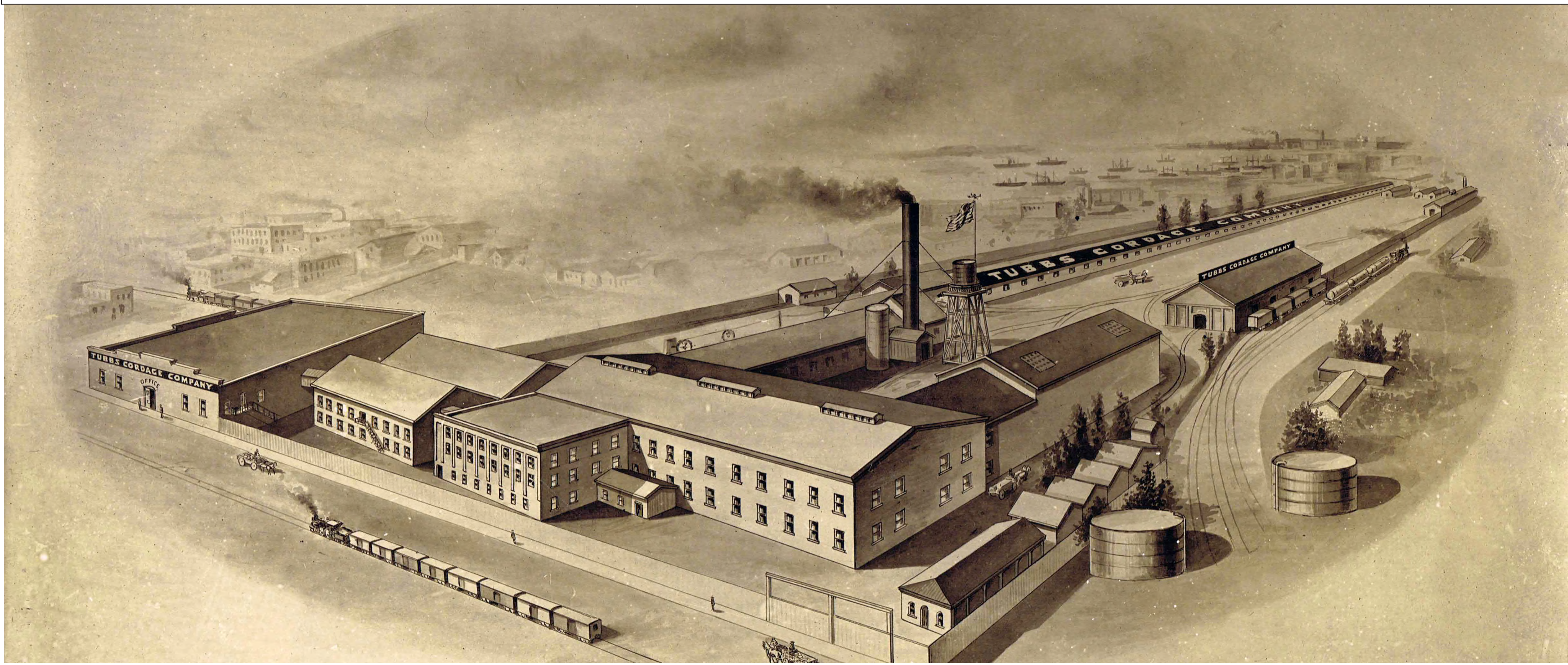
ACTUAL SIZE OF ROPE

DIAM. INCHES	FEET PER LB. (MIN.)	BREAKING STRENGTH (MIN.)	DIAM. INCHES	FEET PER LB. (MIN.)	BREAKING STRENGTH (MIN.)
1/4	50.0	600 LB.	13/16	5.13	6,500 LB.
5/16	34.5	1,000	7/8	4.45	7,700
3/8	24.4	1,350	1	3.71	9,000
7/16	19.0	1,750	1 1/16	3.20	10,000
1/2	13.3	2,650	1 1/8	2.78	12,000
9/16	9.61	3,450	1 1/4	2.40	13,500
5/8	7.50	4,400	1 5/16	2.09	15,000
3/4	6.00	5,400	1 1/2	1.67	18,500

PROPERTY OF TUBBS CORDAGE CO. - 200 BUSH ST. SAN FRANCISCO



Tubbs Cordage Knot Display



Tubbs Cordage Birdseye



Delivery Truck



DOGPATCH THEN

San Francisco
Planning



WORKSHOP #1
DATE: MARCH 09 2016
LOCATION: SMOKESTACK