

22nd St Green Connection

DOGPATCH NEIGHBORHOOD ASSOCIATION | TUESDAY 9 FEBRUARY 2016

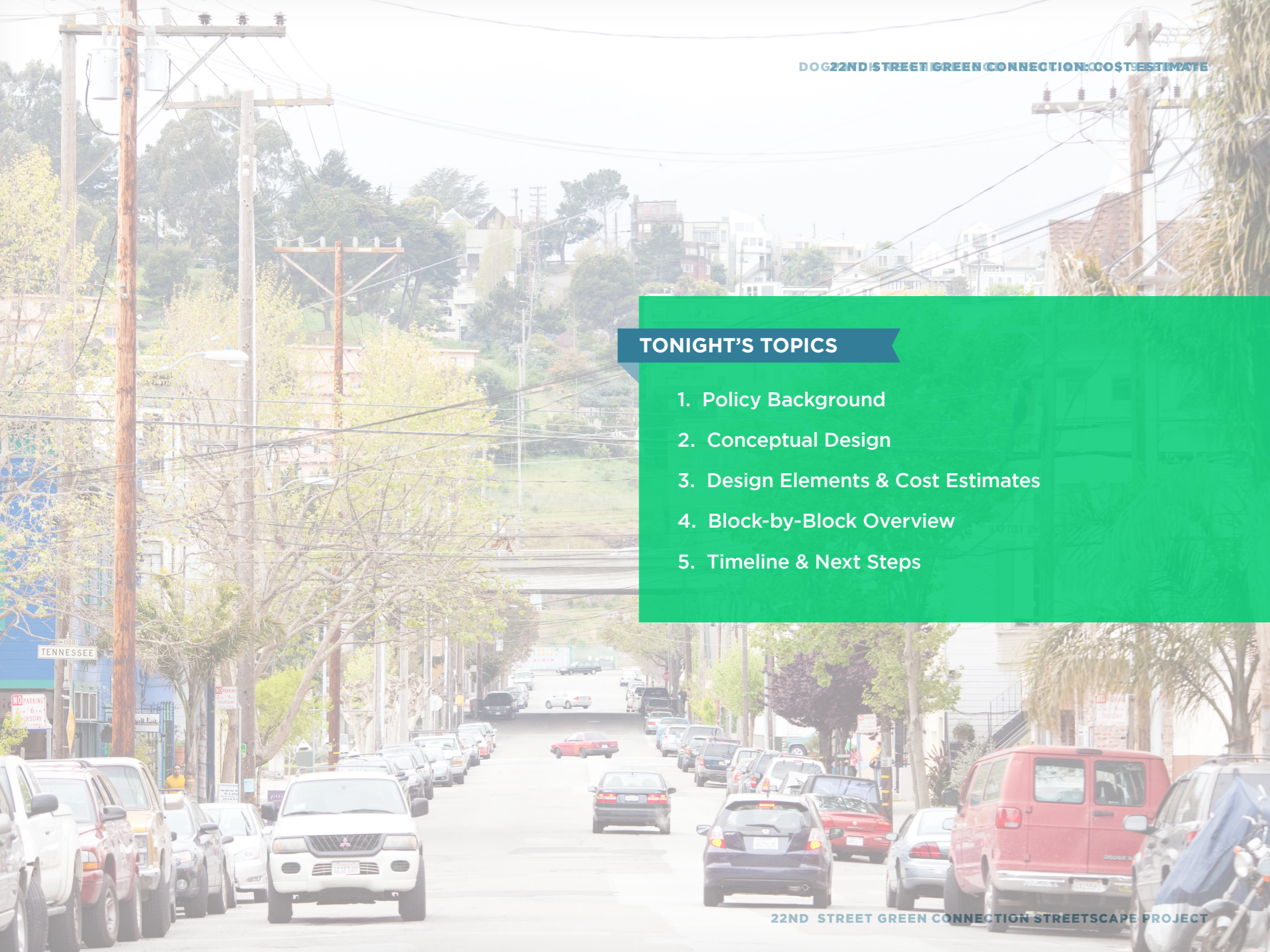
SAN FRANCISCO
**PUBLIC
WORKS**



San Francisco
Planning

TONIGHT'S TOPICS

1. Policy Background
2. Conceptual Design
3. Design Elements & Cost Estimates
4. Block-by-Block Overview
5. Timeline & Next Steps



Policy Background

AUG 2008	Eastern Neighborhoods Program (SF Planning Department)
DEC 2008	Central Waterfront Area Plan (SF Planning Department)
JUN 2010	San Francisco Better Streets Plan (City of SF)
MAY 2011	22nd Street Greening Master Plan (DNA, GreenTrustSF, Fletcher Studios)
NOV 2013	Green Vision Plan (Dogpatch - NW Potrero Hill Green Benefit District)
MAR 2014	Green Connections (City of SF)
ONGOING	Central Waterfront - Dogpatch Public Realm Plan (SF Planning Department)

Eastern Neighborhoods Program

Eastern Neighborhoods Streets and Open Space Concept

As Adopted by Planning Commission - August 2008



LIVING STREETS

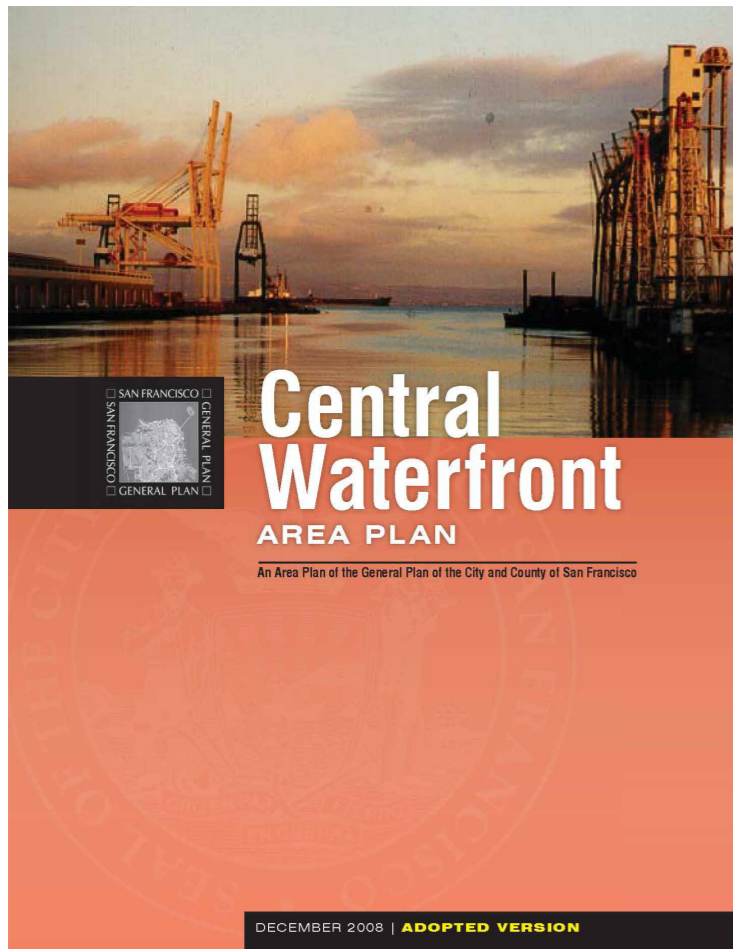
As shown above, alleyways could be converted to "living streets," where traffic is calmed and paving and landscaping are designed to reflect what is envisioned as the pedestrian primacy of these streets. The Planning Department is currently working with the Redevelopment Agency and the Department of Public Works on three streets in the East SoMa: Minna, Natoma, and Russ Streets. These streets will set the standard for additional living streets to be designed throughout all the Plan areas.



- Acquire and develop sites for open space or neighborhood parks in the general vicinity.
- Existing Open Space
- Planned Open Space
- Civic Boulevard
- Green Connector Streets
- Potential Living Streets

* Mission Bay street grid under construction. Estimated completion date is 2013.

Central Waterfront Area Plan



OBJECTIVE 5.3

Create a network of green streets that connects open spaces and improves the walkability, aesthetics, and ecological sustainability of the neighborhood.

POLICY 5.3.1

Redesign underutilized portions of streets as public open spaces, including widened sidewalks or medians, curb bulb-outs, “living streets” or green connector streets.

POLICY 5.3.2

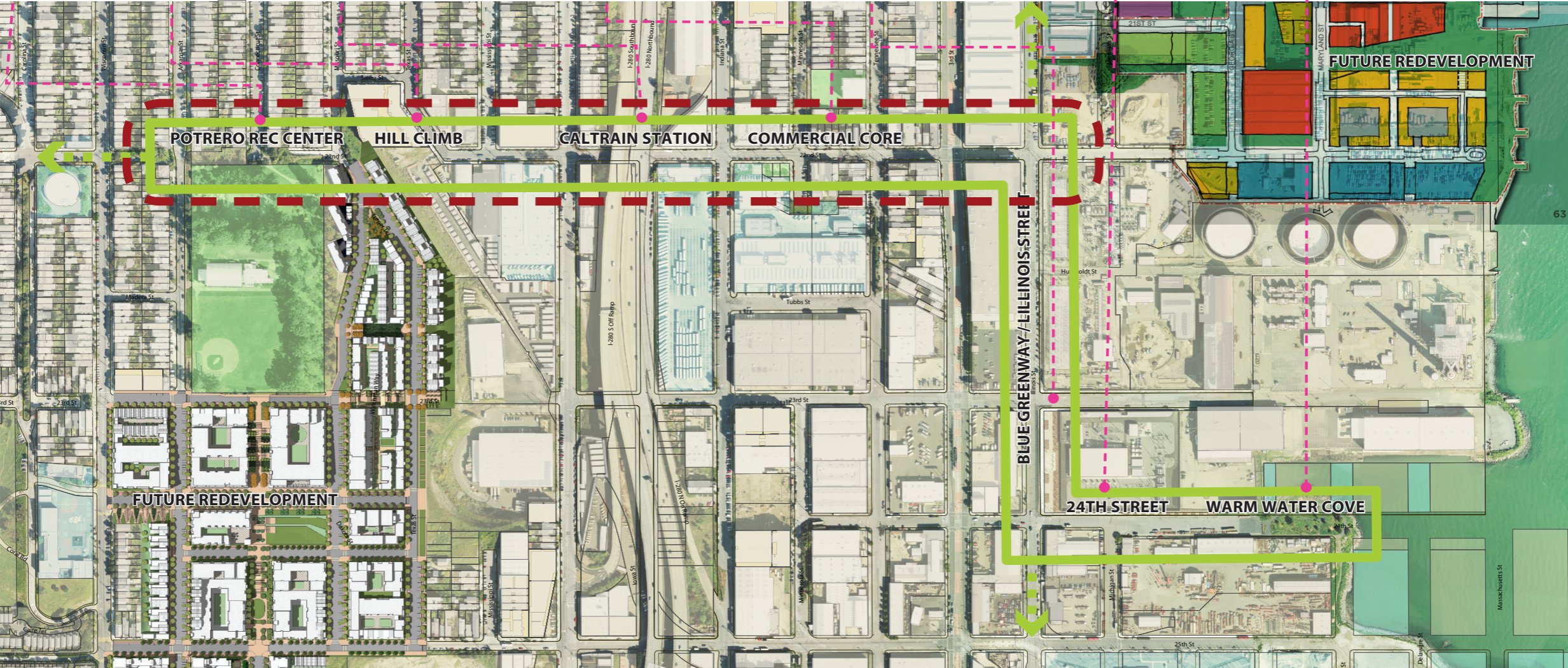
Maximize sidewalk landscaping, street trees and pedestrian scale street furnishing to the greatest extent feasible.

POLICY 5.3.3

Design intersections of major streets to reflect their prominence as public spaces.

Green Connections Plan

PATHWAY HILLCLIMB CALTRAIN STATION COMMERCIAL CORE BLUE GREENWAY 24TH STREET WARM WATER COVE PARK



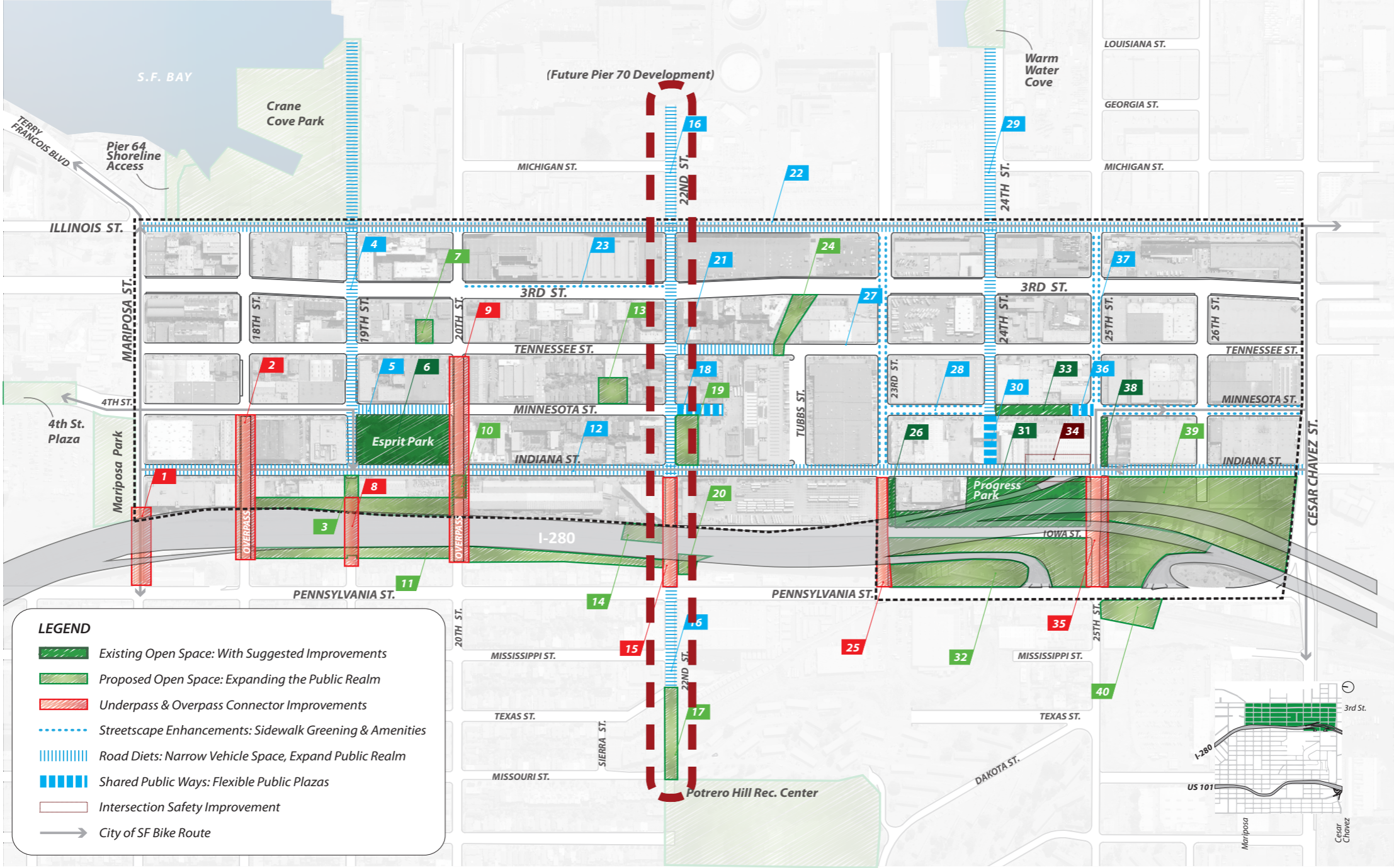
San Francisco Green Connections, SF Planning, SFMTA and SF DPH, March 2014

Central Waterfront - Dogpatch Public Realm Plan



sf-planning.org/CentralWaterfrontPRP

Dogpatch - NW Potrero Hill GBD Vision Plan



UP Urban and CMG Landscape Architecture, with DNA and Potrero Boosters, October 2013

22nd Street Greening Master Plan

THE MASTER PLAN



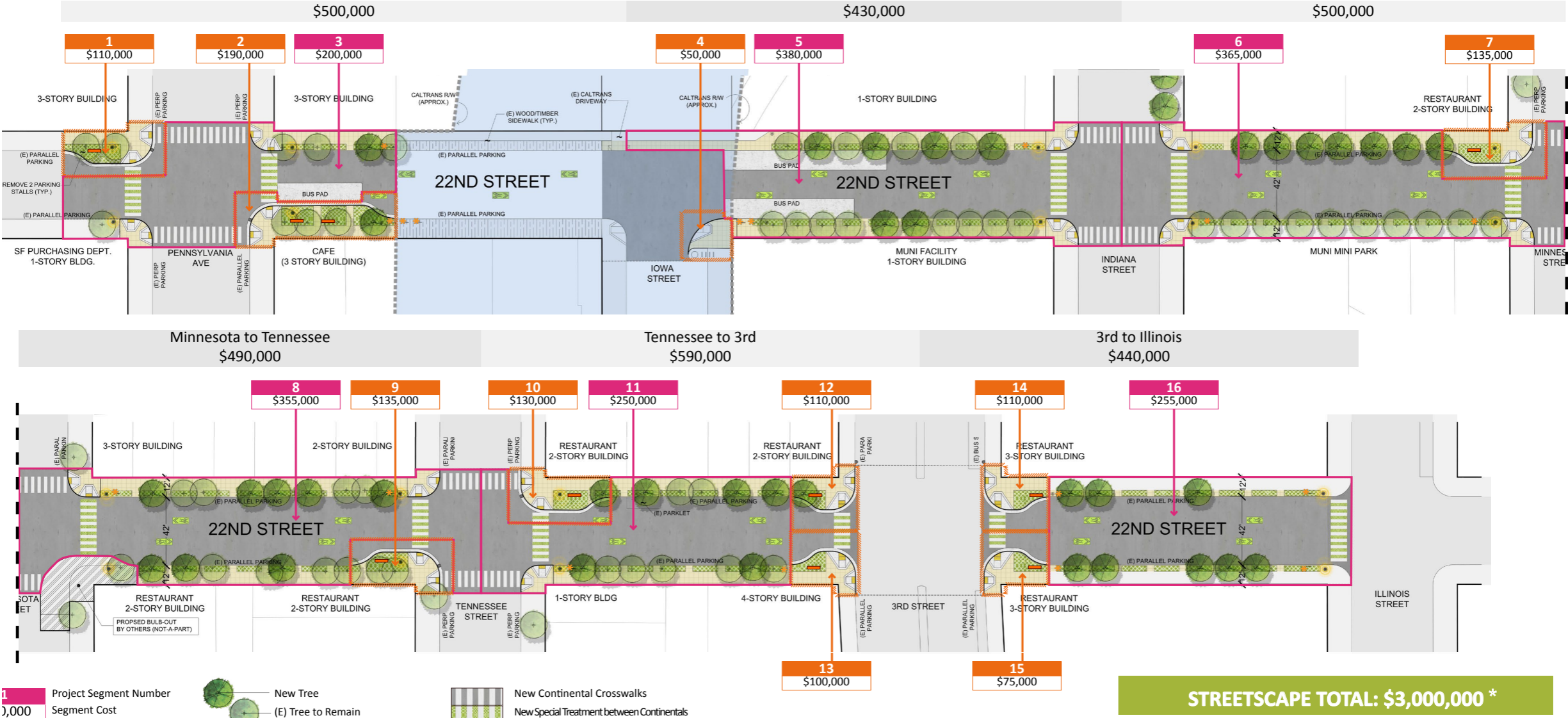
MASTER PLAN

GreenTrustsf 22ND STREET GREENING MASTER PLAN

Fletcher Studio and Nelson/Nygaard, for Greent Trust SF and the San Francisco Parks Trust, May 2011

Conceptual Design

from SEPTEMBER 2015



Conceptual Design Cost Estimate

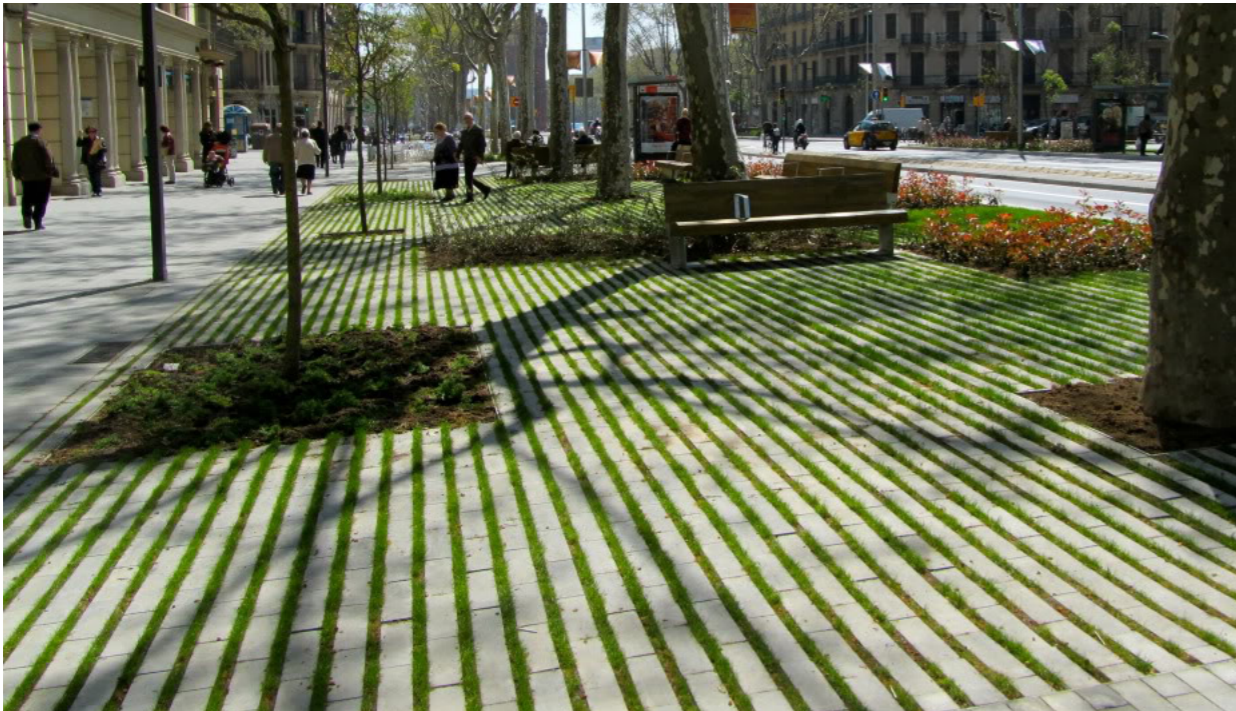
from SEPTEMBER 2015

FEATURES

- 6** Blocks of Repaving (\$600,000 from Paving Program)
- 19,400 SF** New Sidewalks w/ Integral Color
- 9** Bulb-outs
- 42** New Street Trees
- 3** Year Maintenance for New Trees
- 7,150 SF** Permeable Paving
- 7,150 SF** Low-maintenance, Drought Tolerant Planting
- 7,150 SF** Irrigation
- 1,855 SF** Special Treatment at Crosswalks @ 6 Intersections
- 18** New Pedestrian Light Fixtures (& Conduit) @ Intersections
- 24** Painted Sharrows
- 21** Bike Posts
- 4** Trash Receptacles (at Bus Stops)

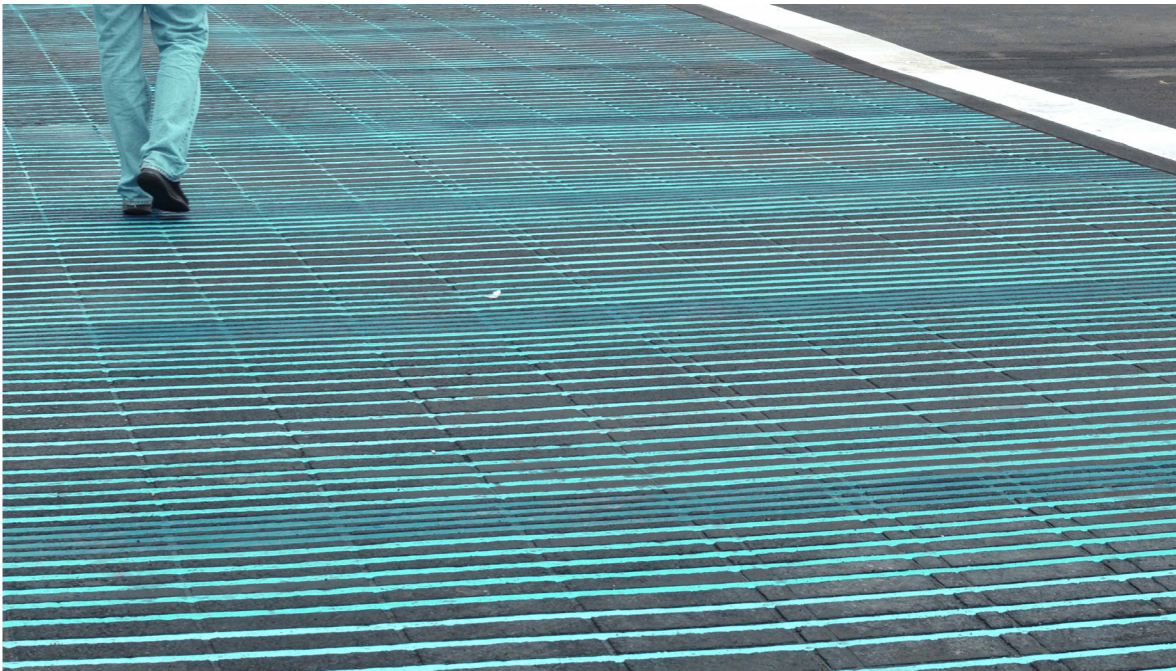
Conceptual Design Elements

STREETSCAPE GREENING



Conceptual Design Elements

INTERSECTION IMPROVEMENTS



Conceptual Design Elements

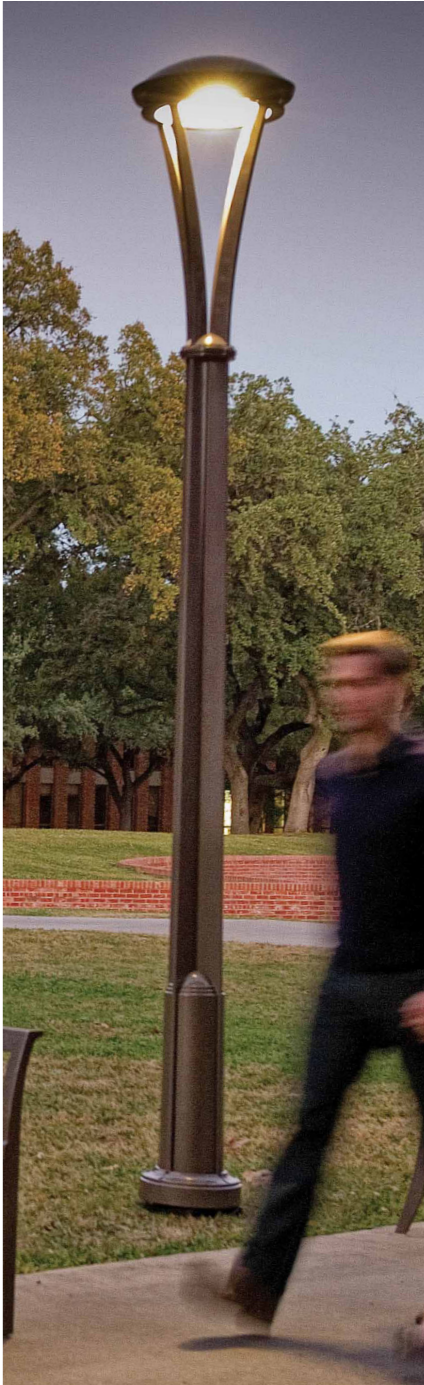
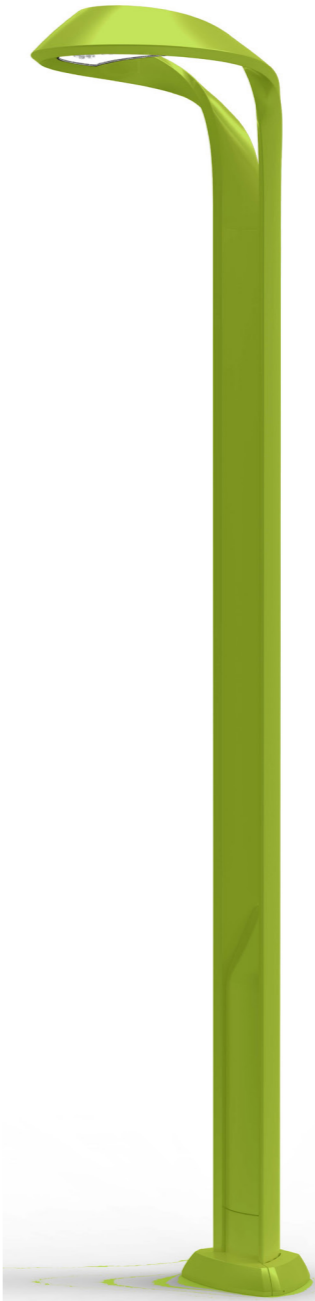
SEATING PROGRAM



Conceptual Design Elements

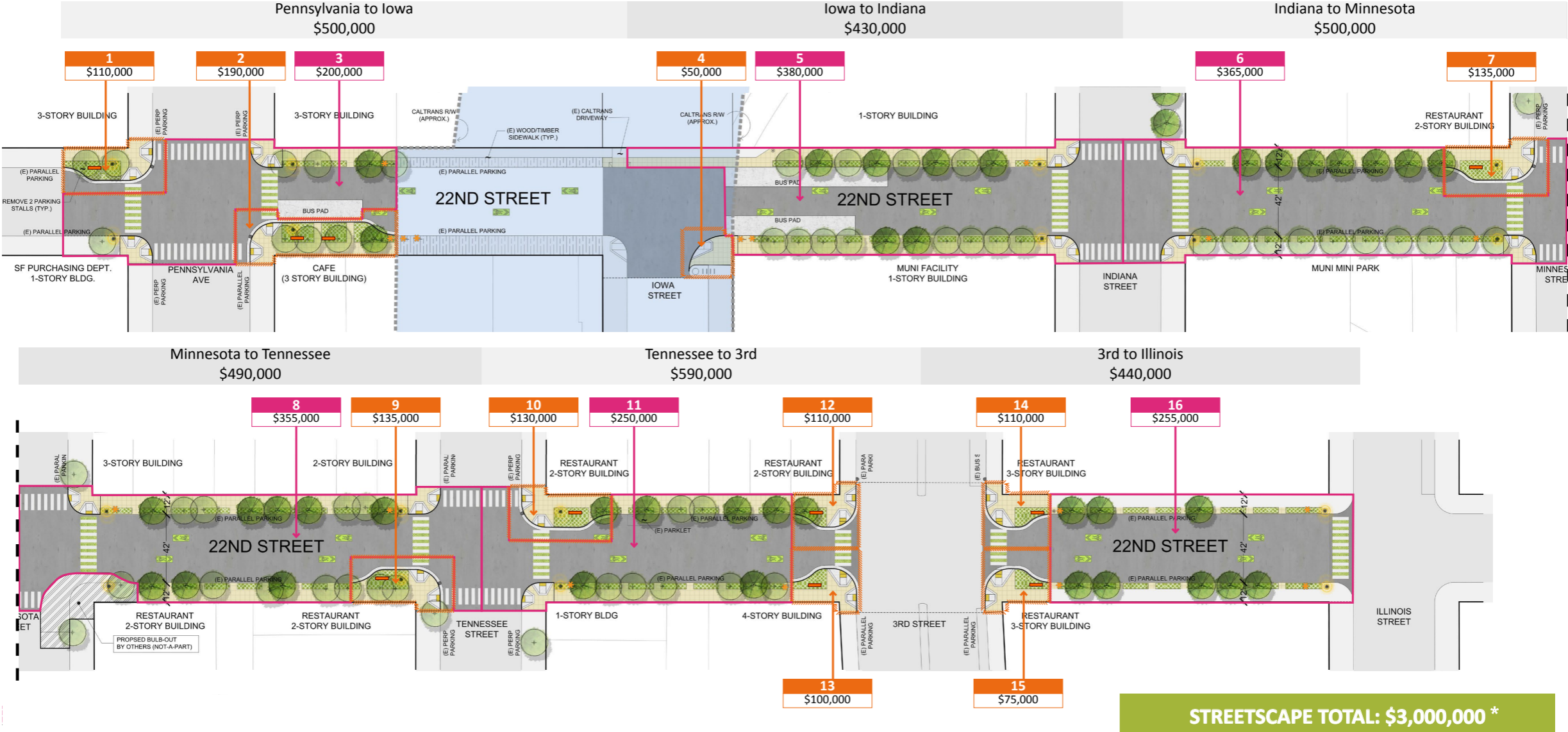
BICYCLE INFRASTRUCTURE

PEDESTRIAN LIGHTING



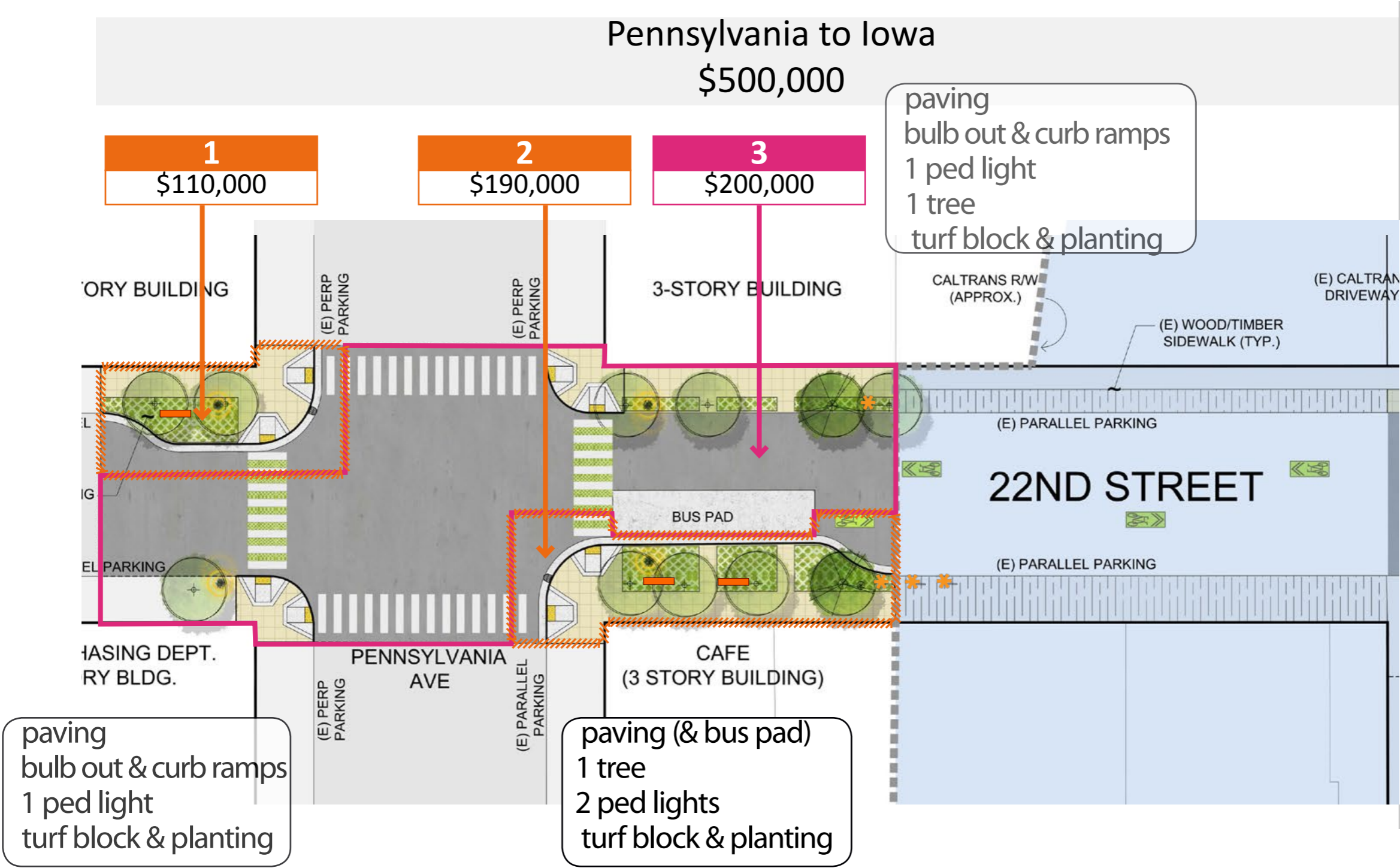
Conceptual Design Cost Estimate

from SEPTEMBER 2015



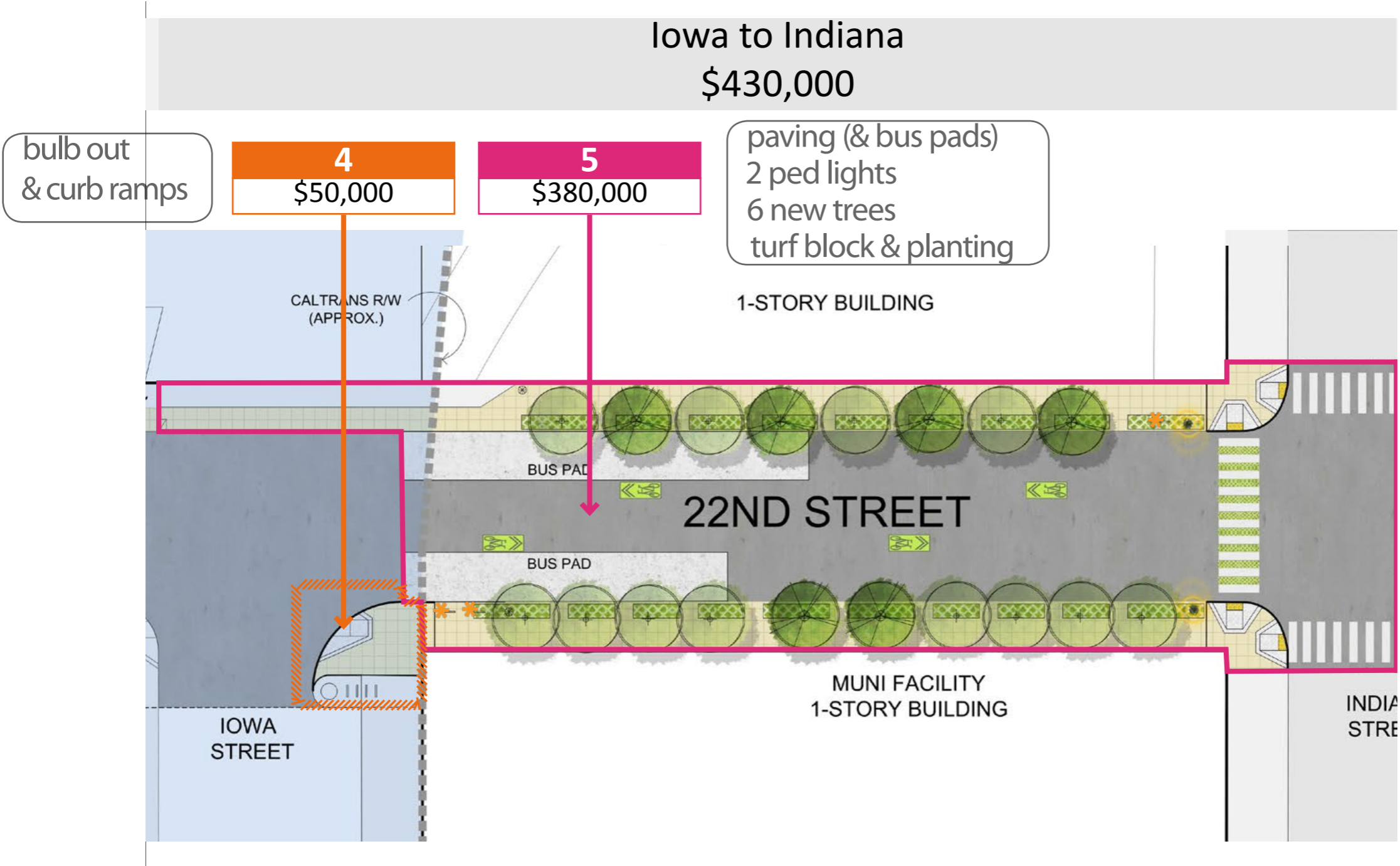
Conceptual Design Cost Estimate

from SEPTEMBER 2015



Conceptual Design Cost Estimate

from SEPTEMBER 2015



Conceptual Design Cost Estimate

from SEPTEMBER 2015

Indiana to Minnesota
\$500,000

paving
3 ped lights
7 new trees
turf block & planting

6
\$365,000

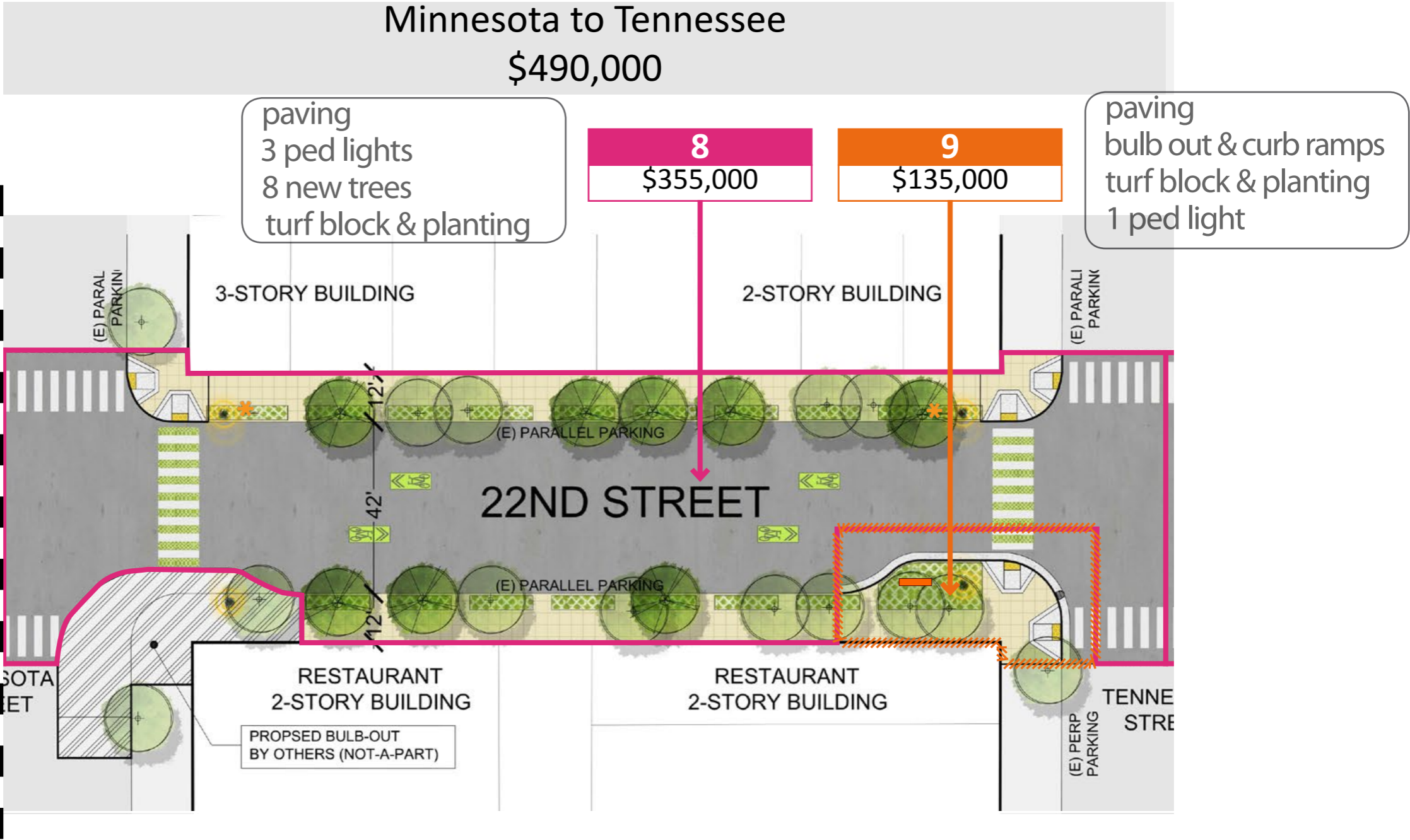
7
\$135,000

paving
bulb out & curb ramps
turf block & planting
1 ped light



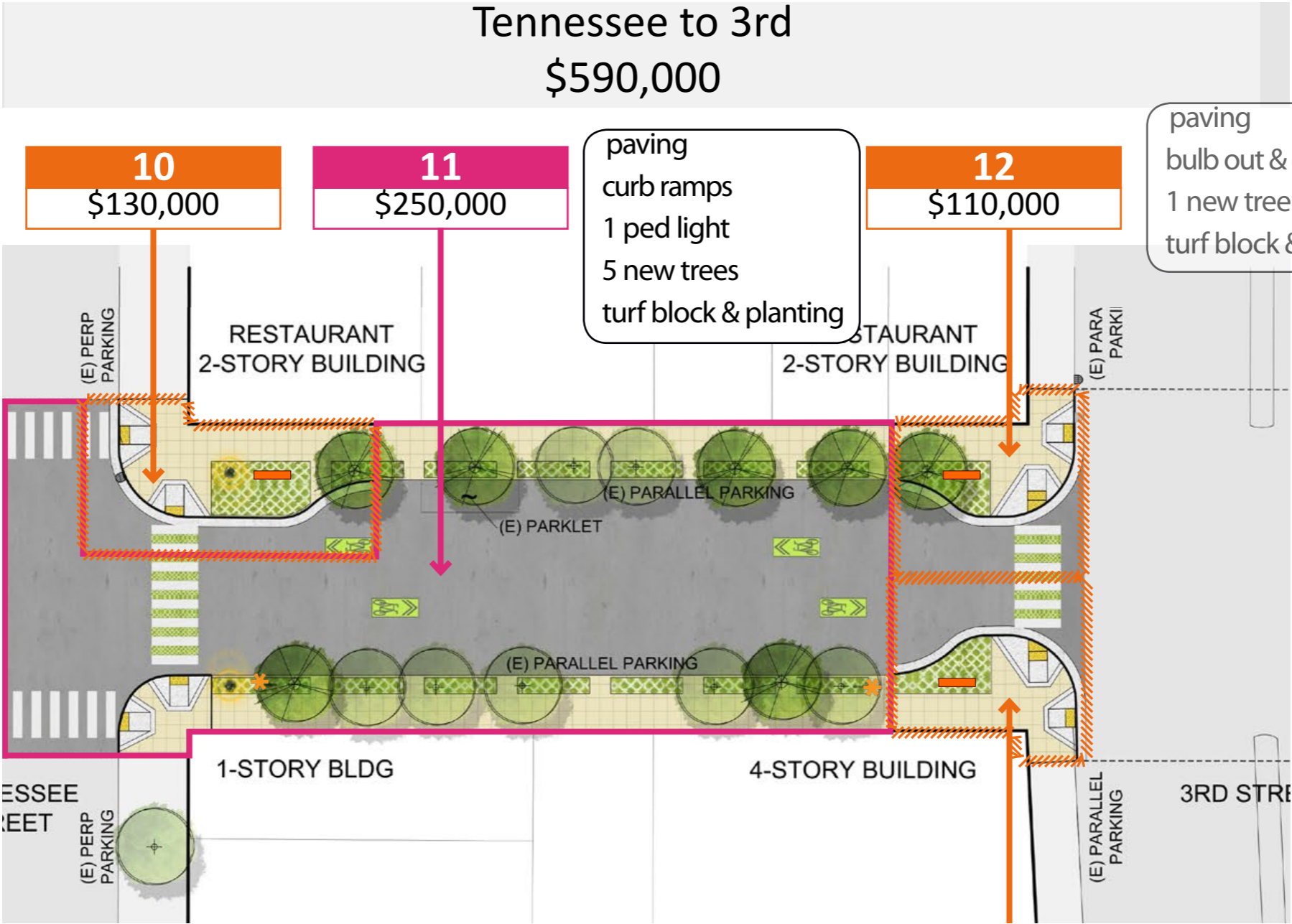
Conceptual Design Cost Estimate

from SEPTEMBER 2015



Conceptual Design Cost Estimate

from SEPTEMBER 2015



Tennessee to 3rd
\$590,000

10
\$130,000

11
\$250,000

12
\$110,000

13
\$100,000

paving
bulb out & curb ramps
1 ped light
1 new tree
turf block & planting

paving
curb ramps
1 ped light
5 new trees
turf block & planting

paving
bulb out & curb ramps
1 new tree
turf block & planting

paving
bulb outs & curb ramps
turf block & planting

Conceptual Design Cost Estimate

from SEPTEMBER 2015

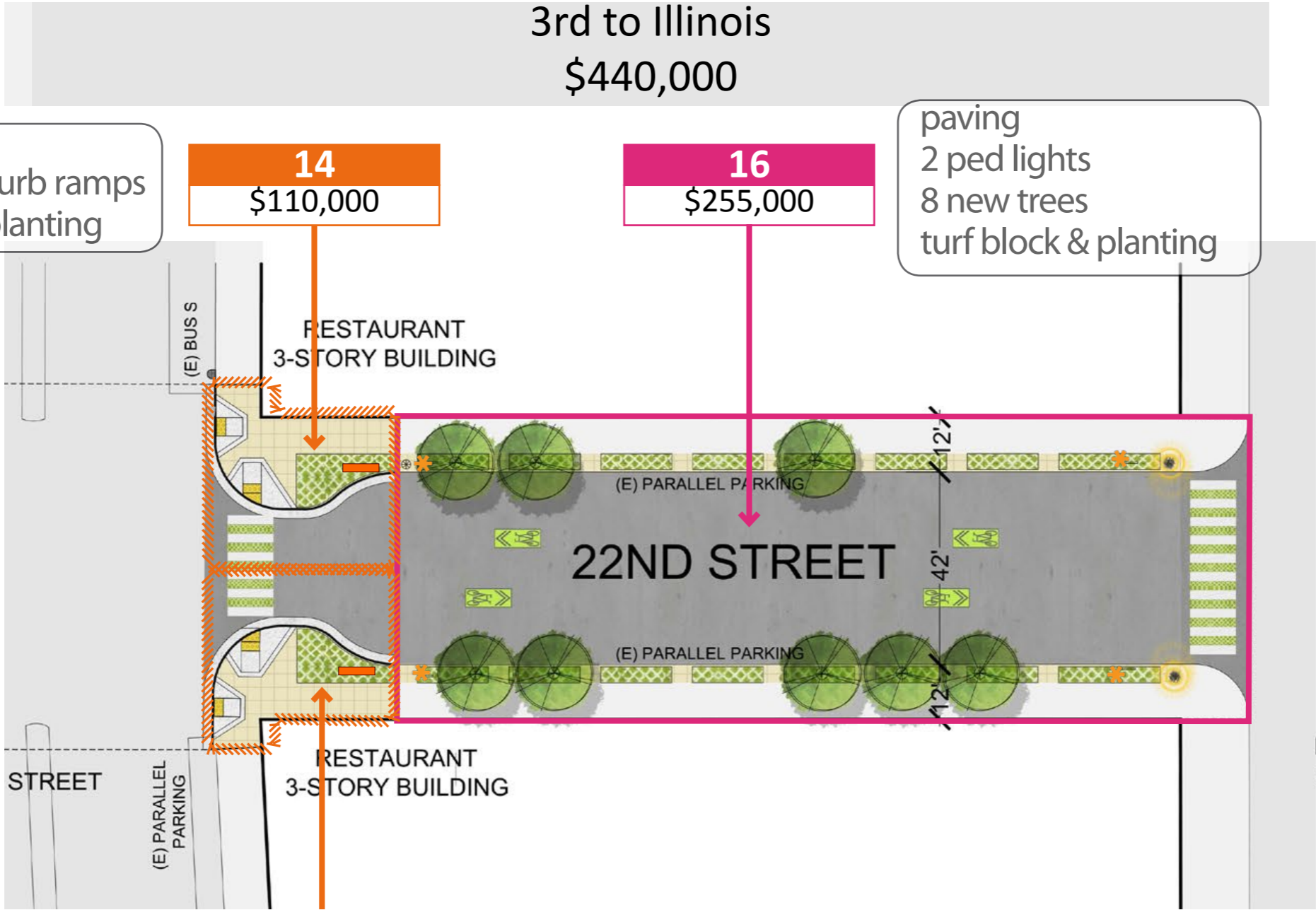
3rd to Illinois
\$440,000

paving
bulb outs & curb ramps
turf block & planting

14
\$110,000

16
\$255,000

paving
2 ped lights
8 new trees
turf block & planting



15
\$75,000

paving
bulb outs & curb ramps
turf block & planting

22nd Street Green Connection

CONCEPTUAL DESIGN COST ESTIMATE | from SEPTEMBER

ITEM	COST
1 - Green Pedestrian Refuge	\$ 110 k
2 - Green Pedestrian Refuge	\$ 190 k
3 - Street Segment	\$ 200 k
4 - Green Pedestrian Refuge	\$ 50 k
5 - Street Segment	\$ 380 k
6 - Street Segment	\$ 365 k
7 - Green Pedestrian Refuge	\$ 135 k
8 - Street Segment	\$ 355 k
9 - Green Pedestrian Refuge	\$ 135 k
10 - Green Pedestrian Refuge	\$ 130 k
11 - Street Segment, Trees	\$ 250 k
12 - Green Pedestrian Refuge	\$ 110 k
13 - Green Pedestrian Refuge	\$ 100 k
14 - Green Pedestrian Refuge	\$ 110 k
15 - Green Pedestrian Refuge	\$ 75 k
16 - Green Pedestrian Refuge	\$ 255 k
CIVIL ENGINEER'S SURVEY	\$ 50 k
TOTAL PROJECT COST:	\$ 3.0 m

PROGRAMMED FUNDS	AMOUNT
IMPACT FEES - EN CAC	\$ 2.0 M
PUBLIC WORKS PAVING PROG.*	\$ 0.6 M
TOTAL:	\$ 2.6 m

TOTAL PROJECT COST EST.	\$ 3.6 M
CURRENT SHORTFALL	\$ 1.0 M

**Funding (~\$600K) for paving from Illinois Street to Pennsylvania Ave (except for the Caltrain bridge) will come from the Public Works Paving Program budget.*

Timeline & Next Steps for 22nd St Project

JUN 2015 - MAR 2016	Neighborhood & GBD Mtgs	
DEC 2015	Funding Confirmed by EN CAC and IPIC	
MAR 9th 2016	Public Realm Plan Community Mtg	
MAR 30th 2016	22nd Street Project Community Mtg	
SPRING 2016	22nd Street Bridge Reconstruction Start	
SPRING - WINTER 2016	22nd Street Project Design Start	
WINTER 2016 - SUMMER 2017	Contracting	
SUMMER 2017 - SPRING 2018	Construction	

Neighborhood Meetings include monthly meetings with Potrero Dogpatch Merchants' Assn, Dogpatch Neighborhood Assn, Potrero Boosters Neighborhood Assn, and Dogpatch - NW Potrero GBD Board.



www.sf-planning.org/CentralWaterfrontPRP

robin.abad@sfgov.org / 415-575-9123

kelli.rudnick@sfdpw.org / 415-558-4489

Funding Strategies & Schedule Scenarios

OCTOBER 2015

	CY 2015				CY 2016								CY 2017								CY 2018											
	J	A	S	O	N	D	J	F	M	A	M	J	J	A	S	O	N	D	J	F	M	A	M	J	J	A	S	O	N	D		
Scenario 1	planning	\$	community design				bid				construct				c																	
Scenario 2	planning	Identify additional funds				\$	community design				bid				construct																	
Scenario 3	planning	\$				design				bid				construct				c														

SCENARIO 1: \$3.6M budget

- Fall 2015: Additional impact fees confirmed to fill \$1M funding gap (on top of \$2M impact fees and \$600k of general funds already allocated to the project)
- Winter 2015-16: Community design workshop(s)
- Spring 2018: Project completion

SCENARIO 2: \$2.6M budget + unknown amount

- Fall 2015: Additional impact fees not allocated to fill \$1M funding gap
- Fall 2015 - Summer 2016: Work to identify potential additional funding from general fund (max \$500k increments per FY), and other sources
- Summer 2016: Any potential additional funding confirmed; though low chance of receiving full funding
- Winter 2016-17: Community design workshop(s); eliminate design elements per budget
- Spring 2019: Project completion

SCENARIO 3: \$2.6M budget

- Fall 2015: Additional impact fees not allocated, \$1M funding gap left unfunded
- Winter 2015-16: Community design workshop(s) to decide which blocks and features to eliminate
Does not deliver on elements of the Greening Master Plan (May 2011)
Shorten the number of blocks and severe reducing greening elements
- Spring 2018: Project completion