



DOGPATCH CONSORTIUM

WEDNESDAY AUGUST 3RD, 2016



Agenda Topics

- + Plan Background and Overview
 - _ Plan Outputs
 - _ Timeline
 - _ Project Prioritization
- + How can the Plan Support Developers?
- + How can the Plan Support Neighborhood-Initiated Projects?



DOGPATCH CONSORTIUM
AUGUST 3RD, 2016



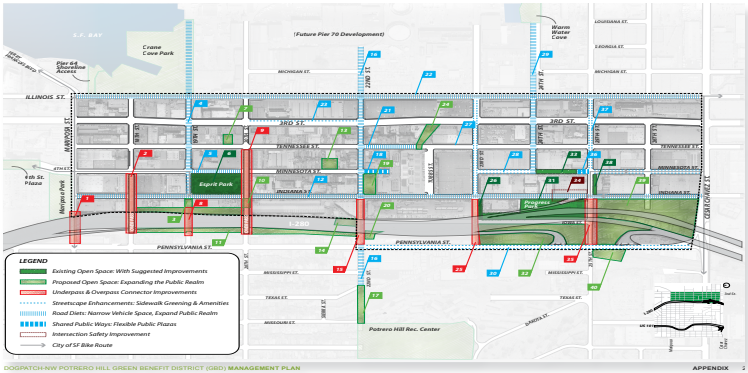
San Francisco
Planning



Related Planning Efforts



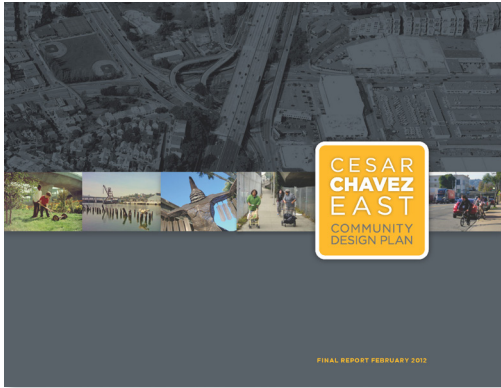
Green Connections
City of San Francisco, March 2014



Dogpatch - Northwest Potrero GBD
Management Plan and Green Vision Plan
November 2013



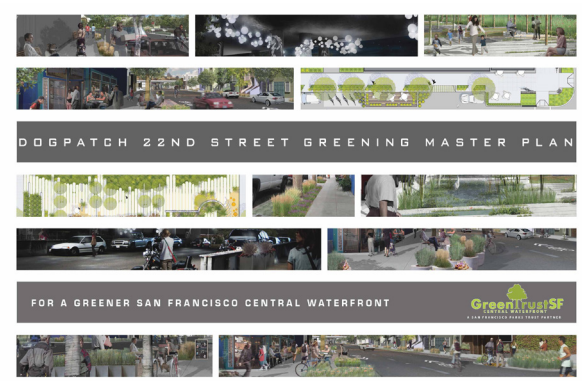
Bicycle Strategy
SFMTA
April 2013



Cesar Chavez East
Community Design Plan
SF Planning, February 2012



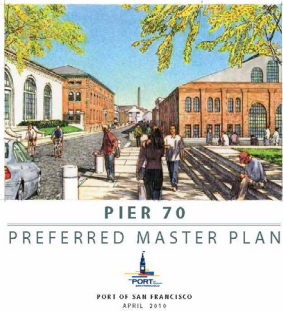
Blue Greenway Planning and
Design Guidelines
Port of SF, July 2012



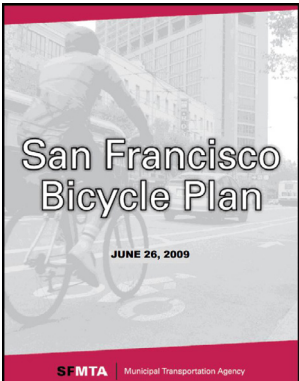
22nd Street Greening Master Plan
Green Trust SF, May 2011



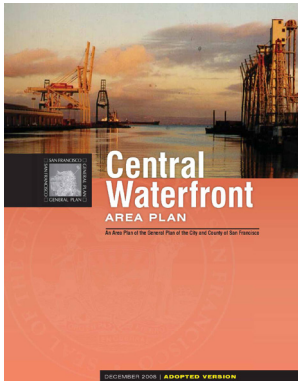
San Francisco Better Streets
City of San Francisco, June 2010



Pier 70 Preferred Master Plan
Port of SF, April 2010



SF Bicycle Plan
SFMTA
June 2009



Central Waterfront
Area Plan
SF Planning, Dec 2008



Eastern Neighborhoods
SF Planning, August 2008



DOGPATCH CONSORTIUM
AUGUST 3RD, 2016



Plan Outputs



IDENTIFY PROJECTS

Through a robust community engagement process, finalize a prioritized list of streetscape, open space, and other public realm projects.



DEVELOP DESIGNS

Working with neighborhood residents, businesses, and property owners, produce detailed design for the highest priority projects. Develop conceptual designs for the remaining projects.



ESTIMATE COSTS

Provide robust cost estimates for each of the projects identified in the plan.

Why a Public Realm Plan?

GUIDE FUNDING



The Plan will identify and scope projects, provide concept designs and preliminary project costs to better inform funding decisions.

REFLECT PRIORITIES



The Plan should reflect the project priorities of local residents, business operators, and neighborhood organizations.

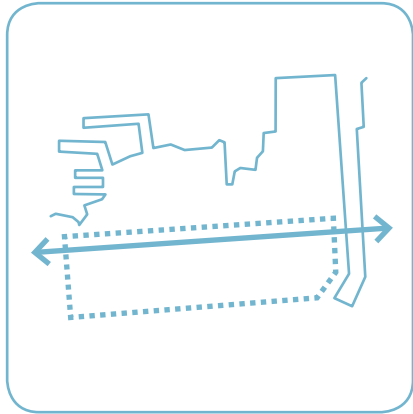
AGENCY COORDINATION



The Plan will provide a platform for coordination between different government and nonprofit agencies.

Timeline

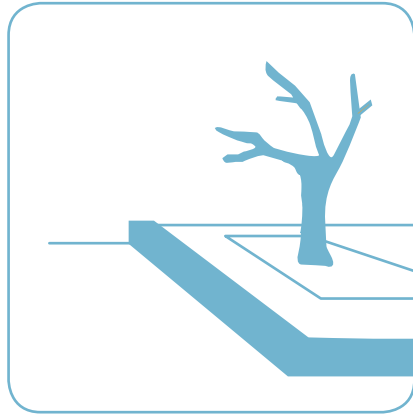
1 Summer 2015



BEGIN OUTREACH AT COMMUNITY GROUP MEETINGS

Planning Department begin outreach at DNA, PDMA, Potrero Boosters, CWAG, DPNWP GBD, and other regular stakeholder meetings. Launch Neighborland, an online polling and public feedback site.

2 February 2016



EXISTING CONDITIONS DOCUMENTATION

Gather information about private development, public planning projects, and the state of streets and sidewalks. Identify opportunities and constraints for public realm plan projects in Dogpatch. Coordinate between City Agencies.

3 March 2016



IDENTIFY PRIORITIES

Collect oral histories, and hold focus groups,

Public Workshop #1
Gather community input to identify priority projects for Dogpatch.

4 May - July 2016



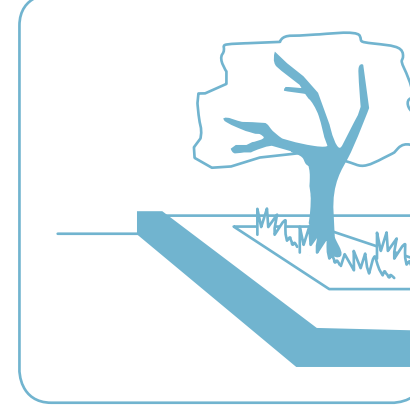
DEVELOP DESIGN IDEAS

Public Workshops #2A and #2B

Report back on results from Workshop #1.

Present ideas for design strategies. Collect community feedback on preferences.

5 Aug. - Oct 2016

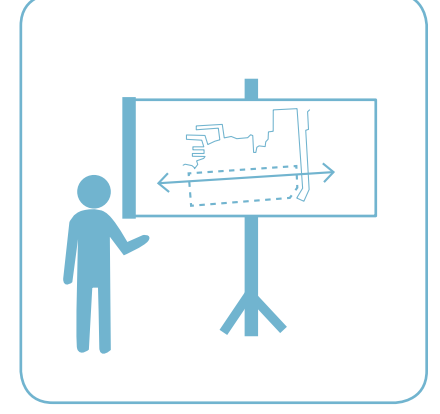


FINALIZE DESIGNS

Conduct feasibility analyses with MTA, Recreation and Parks, Port of SF, Public Works, and others. Develop design options for priority projects.

Public Workshop #3
Collect public input on design options.

6 November 2016



RELEASE AND ADOPTION

Develop cost estimates for preferred designs. Finalize an implementation plan for all public realm projects.

Begin using the plan as an instrument for funding and building projects.



DOGPATCH CONSORTIUM
AUGUST 3RD, 2016



Public Engagement: Workshops

March 2016	Workshop #1: Kickoff and Project Prioritization
May 2016	Workshop #2: Open Spaces & Parks
July 2016	Workshop #3: Streetscapes and Streetparks
September 2016	Workshop #4: <i>Esprit Park</i>
November 2016	Workshop #5: <i>Plan Presentation</i>



Public Engagement: Stakeholder Organizations

2nd TUES	Dogpatch Neighborhood Assn. (DNA)
2nd TUES	Potrero-Dogpatch Merchants Assn. (PDMA)
LAST TUES	Potrero Boosters
3rd WEDS	Central Waterfront Advisory Committe
1st THURS	Penninsula Joint Powers Board of Directors (Caltrain)
AS NEEDED	Dogpatch - NW Potrero Hill Green Benefit District
AS NEEDED	Tunnel Top Park Steering Committee
AS NEEDED	Port of SF / Office of Economic & Workfoce Devel
AS NEEDED	HOPE SF / Portrero Hill

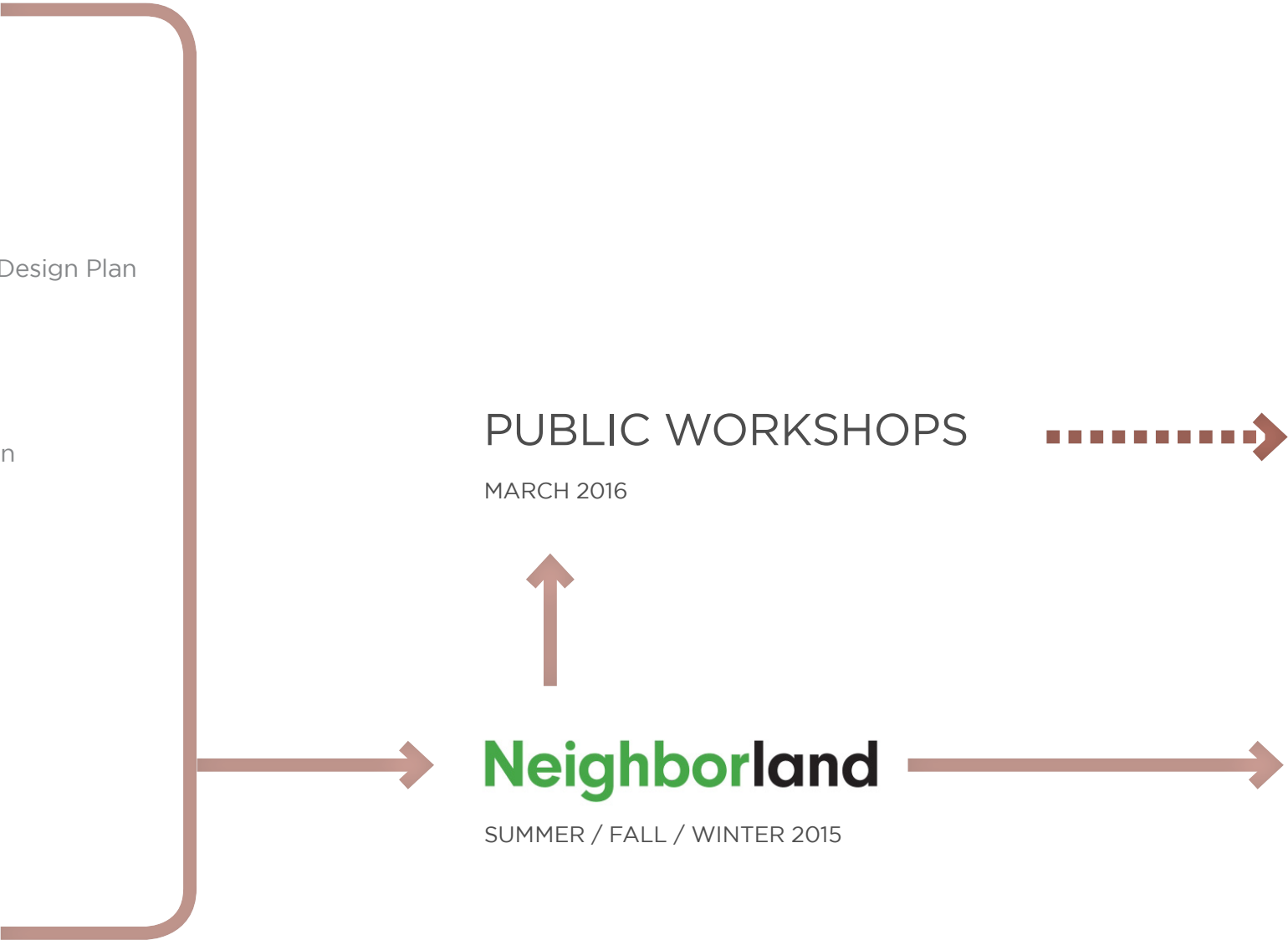


DOGPATCH CONSORTIUM
AUGUST 3RD, 2016



Project Identification & Prioritization

- Green Connections
March 2014
- GBD Management Plan
November 2013
- Bicycle Strategy
April 2013
- Cesar Chavez East Community Design Plan
February 2012
- Blue Greenway
July 2012
- 22nd Street Greening Master Plan
May 2011
- San Francisco Better Streets
June 2010
- Pier 70 Preferred Master Plan
April 2010
- SF Bicycle Plan
June 2009
- Central Waterfront Area Plan
Dec 2008
- Eastern Neighborhoods
August 2008



**PUBLIC REALM PLAN
PRIORITY LIST**

INTERAGENCY
FEASIBILITY ANALYSIS

INITIAL PRIORITY LIST

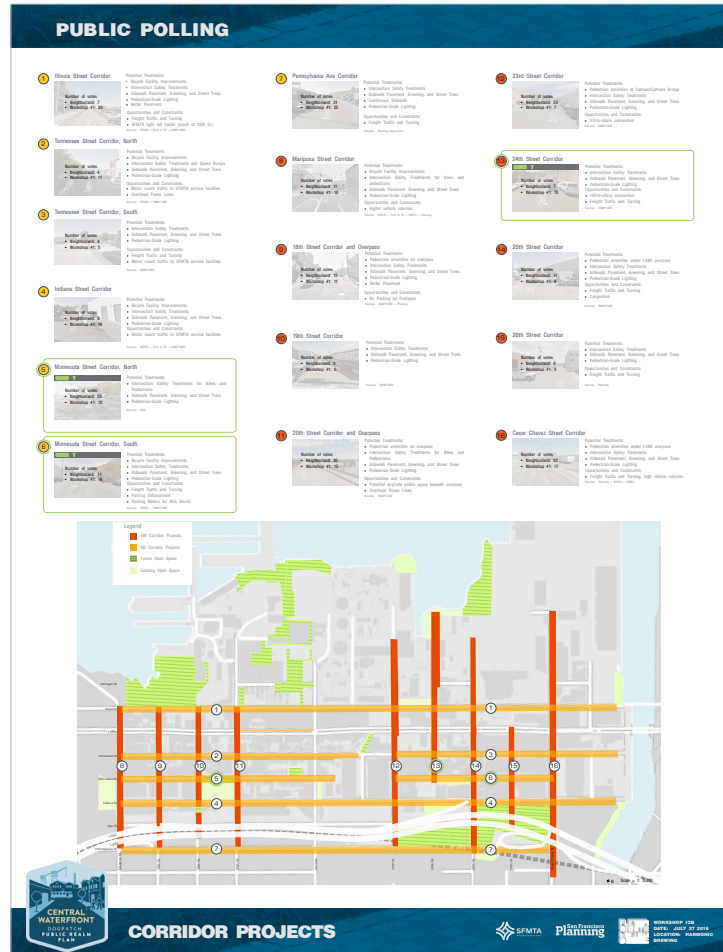


DOGPATCH CONSORTIUM
AUGUST 3RD, 2016



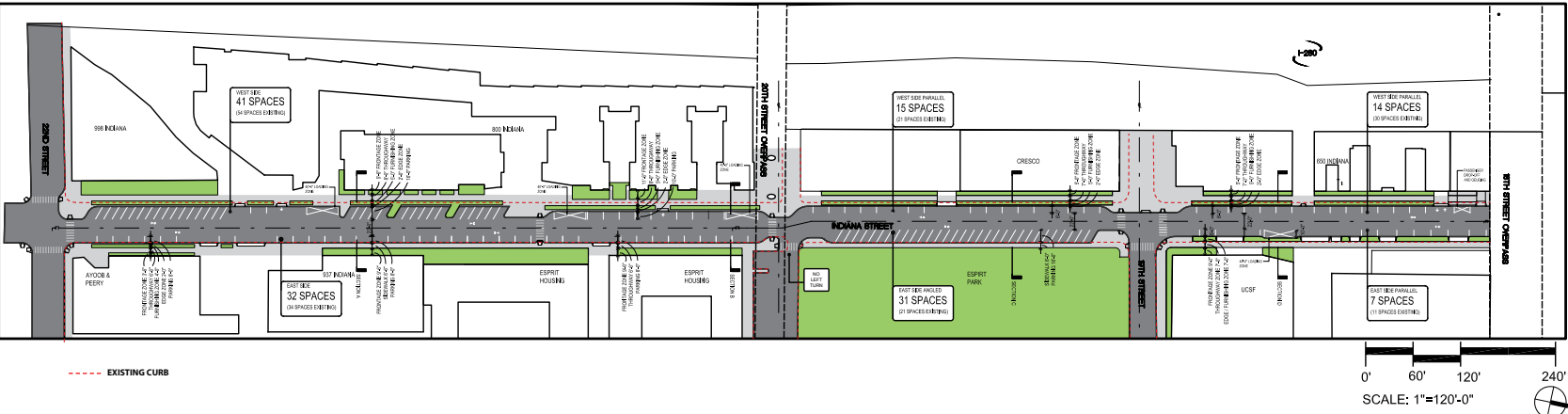
Project Identification & Prioritization: the Green T

We encourage everyone to write on every board you see!



Indiana Street Bikeway coordination

How can the Plan effort support developers?

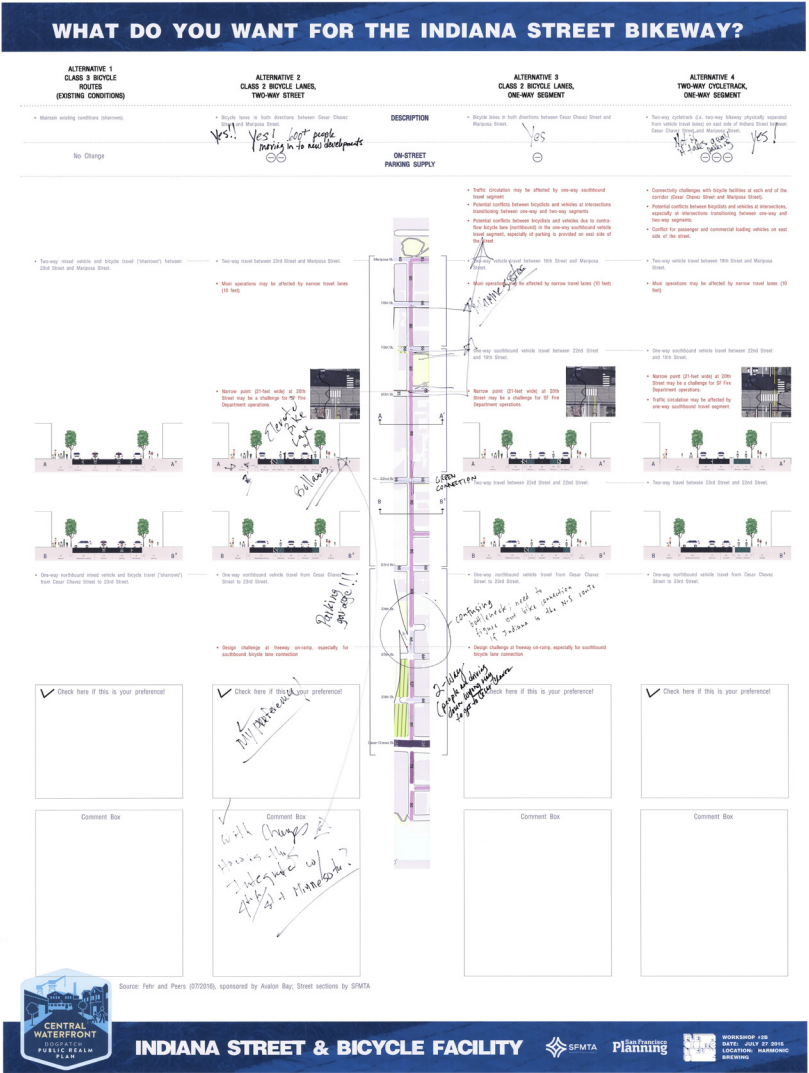


171 SPACES EXISTING
140 SPACES PROPOSED
-31 SPACES (DELTA)

Indiana Street Parking
Hybrid Plan 22nd-18th

Source: Conger Moss Guillard Landscape Architects, Indiana Streetscape Study, November 2013

Page 10 of 31
11/13/13



Source: Fehr & Peers, Indiana Street Bikeway Design Alternative Table, July 2016



DOGPATCH CONSORTIUM
AUGUST 3RD, 2016



Streetscape Standards for UCSF Development Sites

How can the Plan effort support developers?



Caltrain Bridges: Pedestrian Lighting

How can the Plan effort support Neighborhood-initiated Projects?



C SIDEWALK
ILLUSTRATIVE SECTION
1/2" = 1'-0"

probono design by Fletcher Studios

NEXT STEPS

- 1 Develop Electrical Plan
- 2 [Implement]
- 3 I.D. Maintenance & Liability
- 4 I.D. Ops. & Electrification

FUNDING SUMMARY

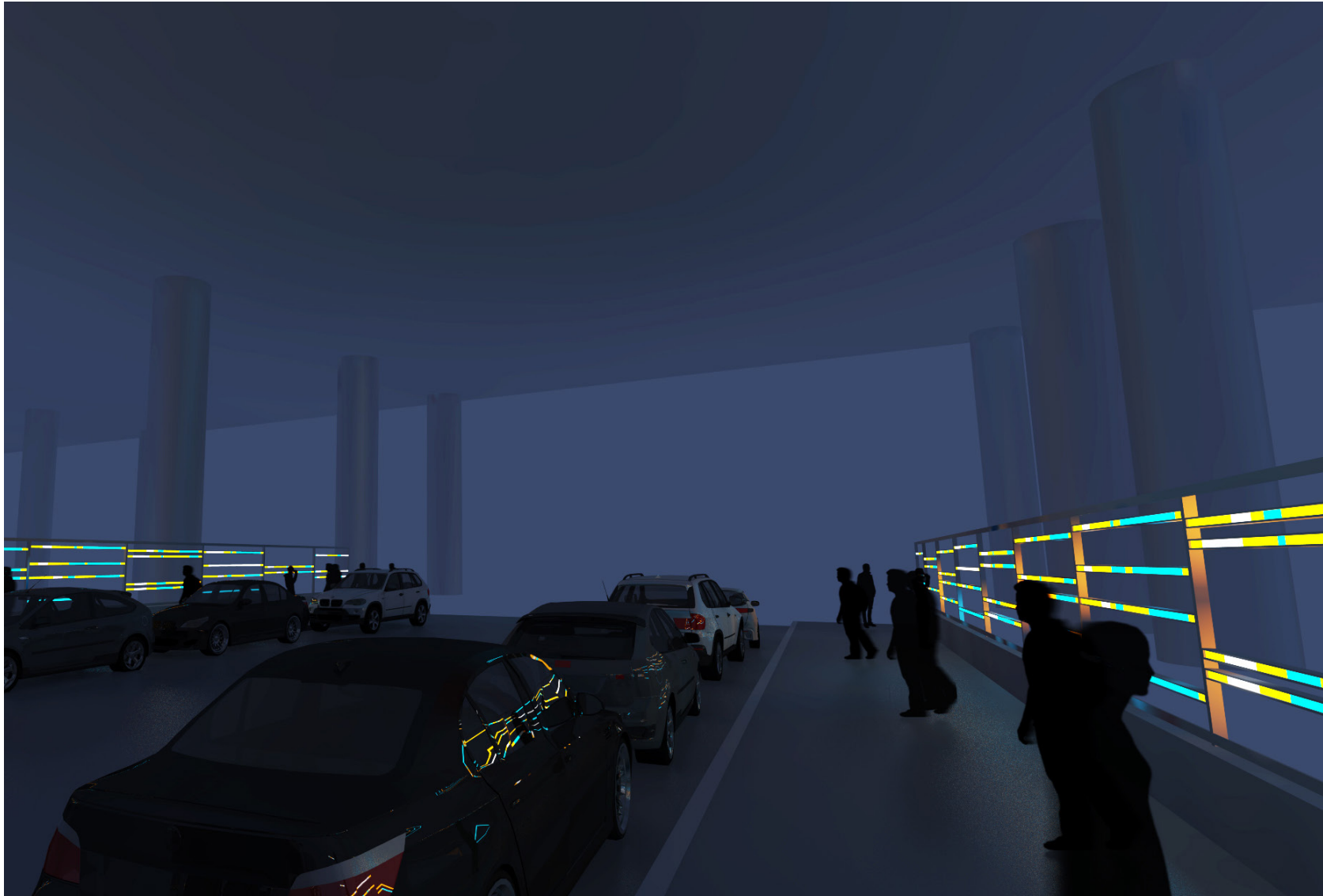
\$183K Total Cost Estimate

\$32.5K Engineering

\$150k Construction

Caltrain Bridges: Gateway Lighting

How can the Plan effort support Neighborhood-initiated Projects?



probono conceptual design by Groundworks

NEXT STEPS

- 1 Develop Design
- 2 Produce Electrical Plan
- 3 Estimate Rough Costs
- 4 I.D. Capital Funding
- 5 I.D. Maintenance & Liability
- 6 I.D. Ops. & Electrification
- 7 Implement

Minnesota Grove & 24th Street

How can the Plan effort support Neighborhood-initiated Projects?



DOGPATCH CONSORTIUM
AUGUST 3RD, 2016



Tunnel Top Park: Site Planning & Interim Amenities

How can the Plan effort support Neighborhood-initiated Projects?



DOGPATCH CONSORTIUM
AUGUST 3RD, 2016



Tunnel Top Park: Site Planning & Interim Amenities

How can the Plan effort support Neighborhood-initiated Projects?



Tunnel Top Park

Party and Unveiling

Friday, August 12 | 5PM
@ 25th St & Pennsylvania Ave

FOOD
BEVERAGES
MUSIC

Undulating Landscape

Undulating Landscape is a project of the Tunnel Top Park Steering Committee, California College of the Arts and the San Francisco Planning Department. The project, designed and fabricated by students at CCA, is funded by a grant of the San Francisco Pavement to Parks Program.

CCA and SF Pavement to Parks collaborated on a Building Technology Seminar in the spring of 2016 focusing on Tunnel Top Park. With guidance from the Tunnel Top Park Steering Committee, CCA students explored different concepts for multi-functional, modular prototypes emphasizing innovative use of concrete and timber. The Steering Committee outlined programmatic and performance requirements such as seating, shading, nighttime lighting, fencing and operable gates. The spring seminar culminated in an onsite presentation of prototype concepts constructed at full scale. A Jury comprised of Tunnel

A 3D architectural rendering of the 'Undulating Landscape' prototype, showing a series of white, modular, undulating concrete blocks with vertical wooden slats, designed for seating and shading.

DOGPATCH CONSORTIUM
AUGUST 3RD, 2016





www.sf-planning.org/CentralWaterfrontPRP
robin.abad@sfgov.org / 415-575-9123

