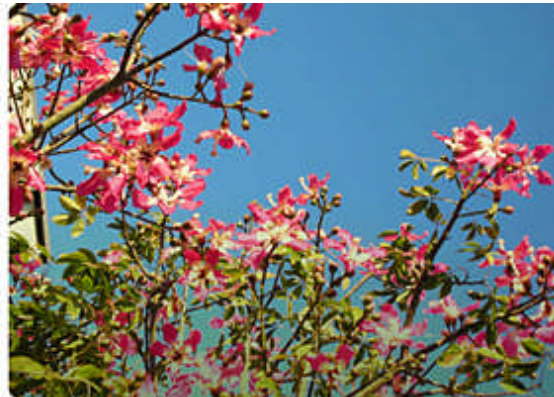




17th & Folsom Park

Community Update
March 11, 2012



Mary Hobson, Project Manager
Recreation and Park Department

John Dennis, Landscape Architect
Andrea Alfonso, Landscape Architect
Department of Public Works

Susan Exline, City Planner
Planning Department





Meeting Agenda

PRESENTATION	40 Min.
GROUP INPUT SESSIONS	45 Min.
WRAP –UP	5 Min.
OPEN HOUSE	30 Min.



Outreach

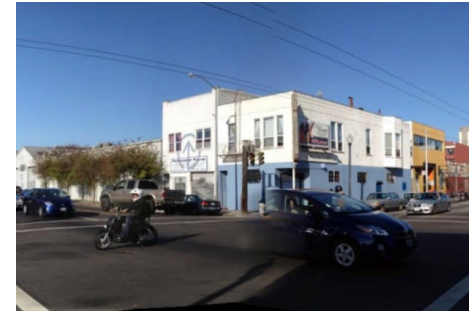
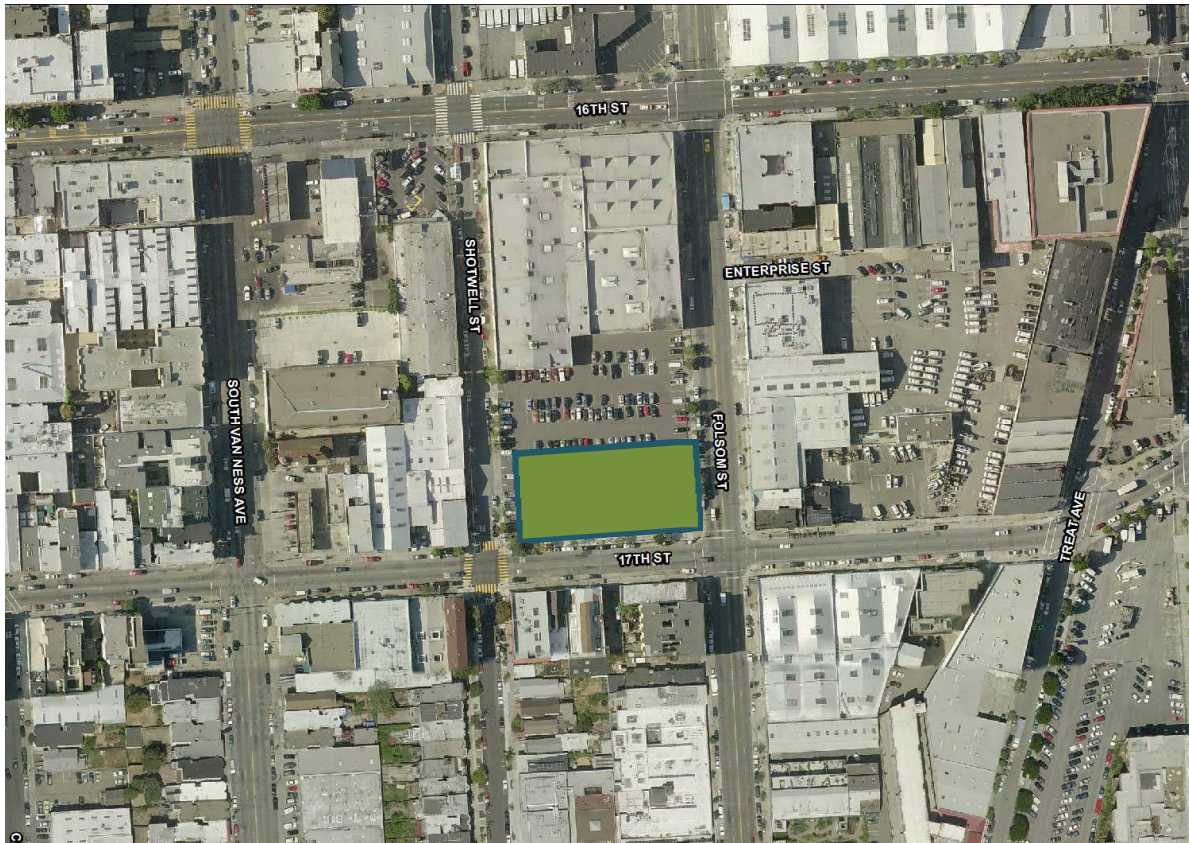
- Partnering with People Organizing to Demand
- Environmental and Economic Rights (PODER)
- Community outreach began in August 2009 and continued through June 2010
- 15 community meetings with over 300 participants



Funding

- \$2.7 million State grant awarded for the development of the site
- \$2.3 million of developer impact fees will be used to purchase the land from the San Francisco Public Utilities Commission



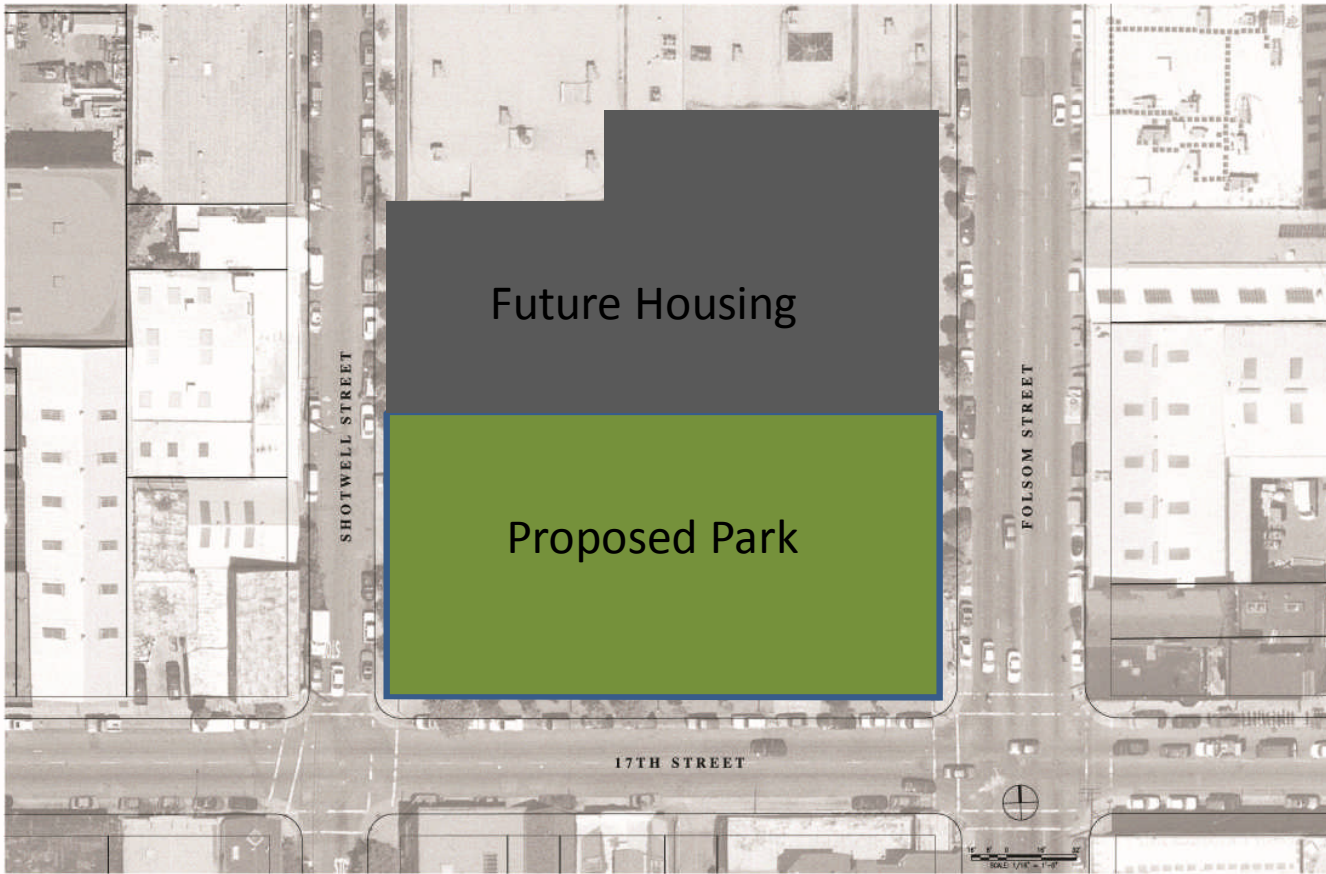


Parking Lot Site



17th & Folsom Park Neighborhood Context

CONSULTANT:
DEPARTMENT OF PUBLIC WORKS
LANDSCAPE ARCHITECTURE SECTION



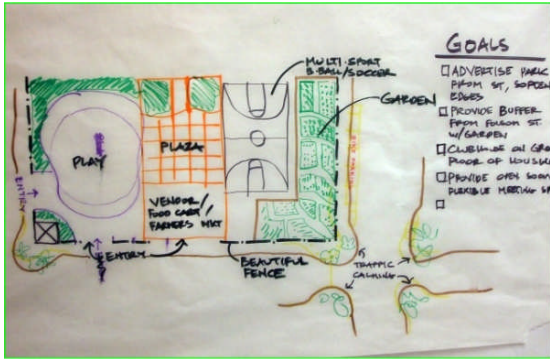
Site Zoning



17th & Folsom Park

Existing Site

CONSULTANT:
DEPARTMENT OF PUBLIC WORKS
LANDSCAPE ARCHITECTURE SECTION



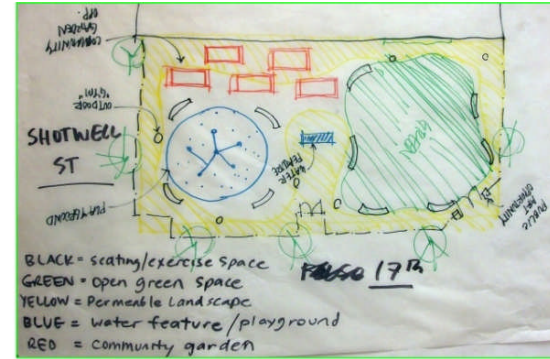
Group One:

Group Values:

- Quiet space
- Buffer noise from Folsom, site quieter elements on Shotwell side
- Housing/Park integration
- Streetscape welcomes people to park

Activities/Components:

- Basketball
- Multi-use plaza for events
- Community Garden
 - Sited on Folsom side as buffer to noise



Group Four:

Group Values:

- Maximum softscape- in hardscape vs. softscape
- Sustainability
- Systems for collecting water
- Balance kid and adult area

Activities/Components:

- Playground (closer to Shotwell St)
- Water feature
- Path outside park
- Outdoor performance area
- Green Wall/ Green Gate
- Community Entrance on Folsom at 17th Corner
- Meandering path/ encourage adult fitness, walking
- Fitness Stations (parcourse)
- Focal point with Water Feature, Water as "white noise"
- Seating along perimeter of Greenspace and playground
- Permeable Fencing (public art component) around park
- Multi-use flexible green space
- Strategically placed public art
- Hardscape plaza to welcome mobile food vendors
- Create space for healthy food access directly to surrounding neighborhood
- Community Garden and Education center



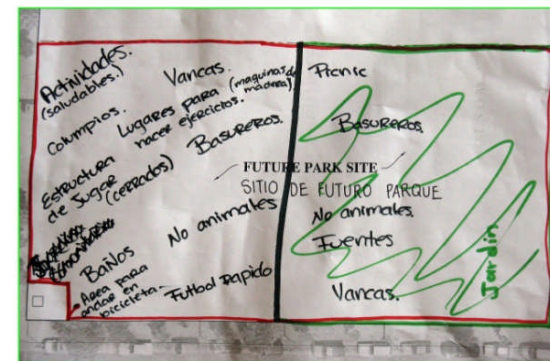
Group Two:

Group Values:

- Place to Gather
- No Right Angles in design
- Sense of Community
- Mixing demographics groups- Seniors, Children, Artists, Gardeners
- Flexible spaces-not preprogrammed
- Dogs on leash, but welcomed
- Responsive to surrounding communities
- Artistic elements

Activities/Components:

- Entrance at 17th and Folsom, 3 other entrances at center of each side street
- Bandstand/performance space near flexible space
- Central Flex Space
- Play Space
- Mobile vs. permanent food kiosks
- Honor Mission Creek
- Fruit Trees
- Artistic Benches by local artist
- Community Path- Central path not paved, maybe decomposed granite moving through site along water.
- Community Garden beds open if security permits along Folsom St side.
- Water feature
- Community Building



Group Five:

Group Values:

- 50% green space
- Bring folks together
- Kids are priority, create place for them
- No dedicated dog park
- Open and accessible but secure (not closed at 4:00 pm)

Activities/Components:

- Kid's space
- Community Space
- birthday parties
- cultural events
- picnic
- BBQ
- Dance



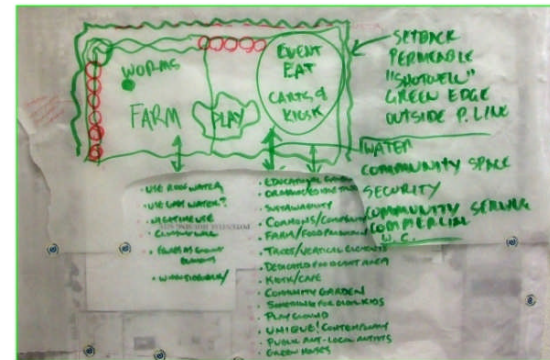
Group Three:

Group Values:

- Place to gather
- Sense of community
- Mixing of demographics and groups- seniors, children, artists, gardeners, etc
- Flexible spaces- not pre-programmed but able to serve a variety of uses
- Enclosed (gated) for safety but low walls, more symbolic than divisive, with welcoming entrances
- Dogs on leash, but welcomed
- Representative of the diverse communities surrounding
- Artistic, i.e. benches as sculpture by different local artist, etc.

Activities/Components:

- Boulder seating, natural forms seating
- Natural forms/ water feature to honor mission creek
 - Creek element lined with mosaic tiles
- Open space components
- Community Garden
 - Recreational Garden- A new kind of community Garden
- Artistic fence, not an ordinary fence
- Divided PG-Tots and teens
- Trail
- Environmental education components
 - Collect rainwater
 - Housing provides restrooms



Group Six:

Group Values:

- Flexible Community Space
- Farm/ Open space
- Sustainability/Environmental education
- Non-traditional
- Kids play area
- Link to housing element
- Move the Electrical pump

Activities/Components:

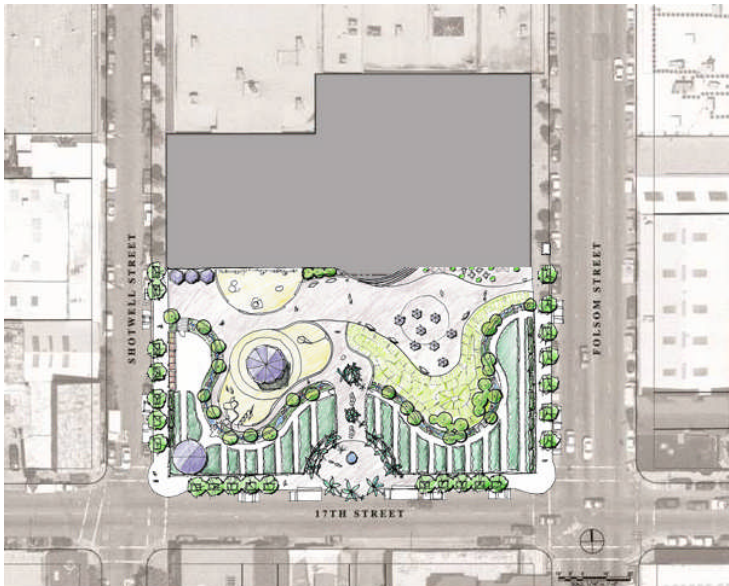
- Fence set In-Wider Sidewalks
- Non-traditional play space, elements
- Farm/Open Community Garden
 - Worm farm, Composting, Rainwater collection
- Community Flex Space
 - Bar/beer garden, Kiosks, Seating, "Tweet Tuesdays" food cart congregation space
- Playground w/ Unusual play features/ educational elements
 - Merry go round, Water Pumps, Swings that create power for garden
- Housing element link to park
 - Community room, Retail/Restaurant Cafe, Restrooms



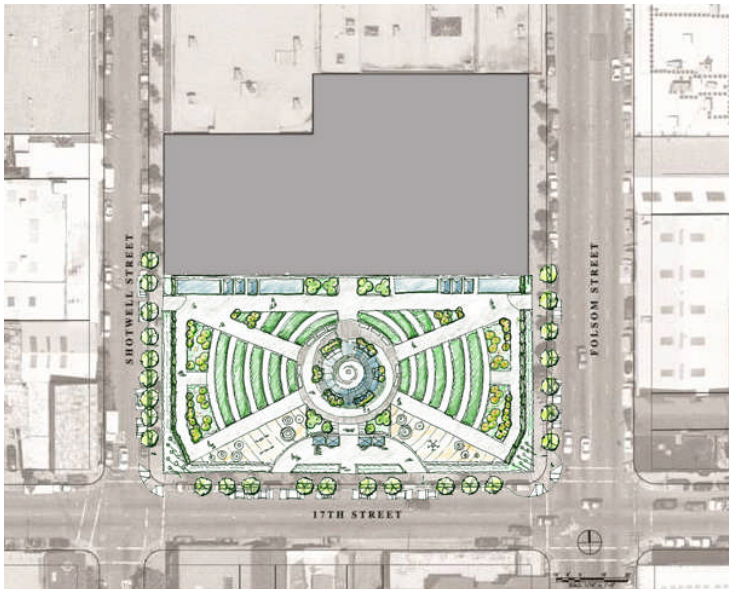
17th & Folsom Park

Community Design Process

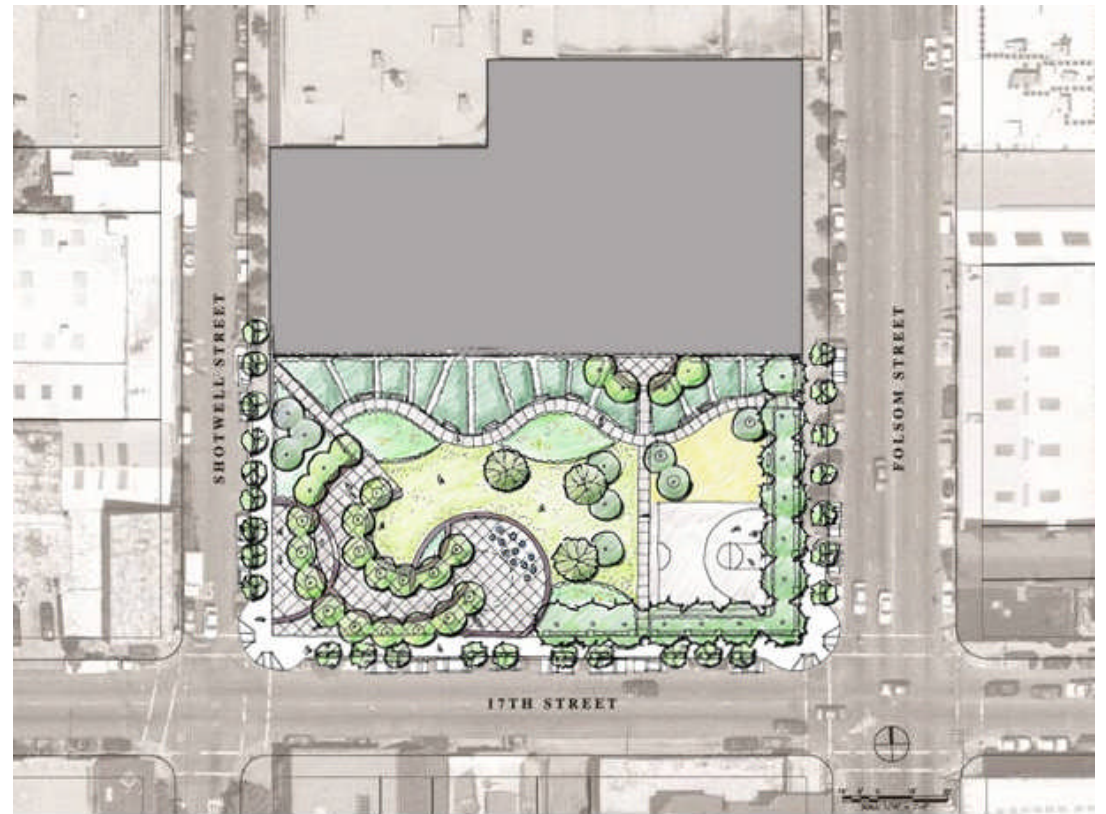
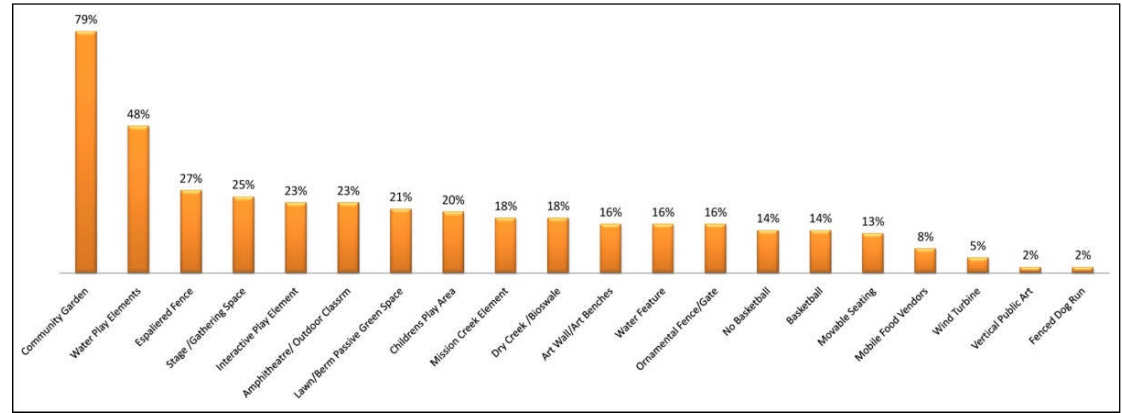
CONSULTANT:
DEPARTMENT OF PUBLIC WORKS
LANDSCAPE ARCHITECTURE SECTION



Berm / Water Plaza /Community Garden Option

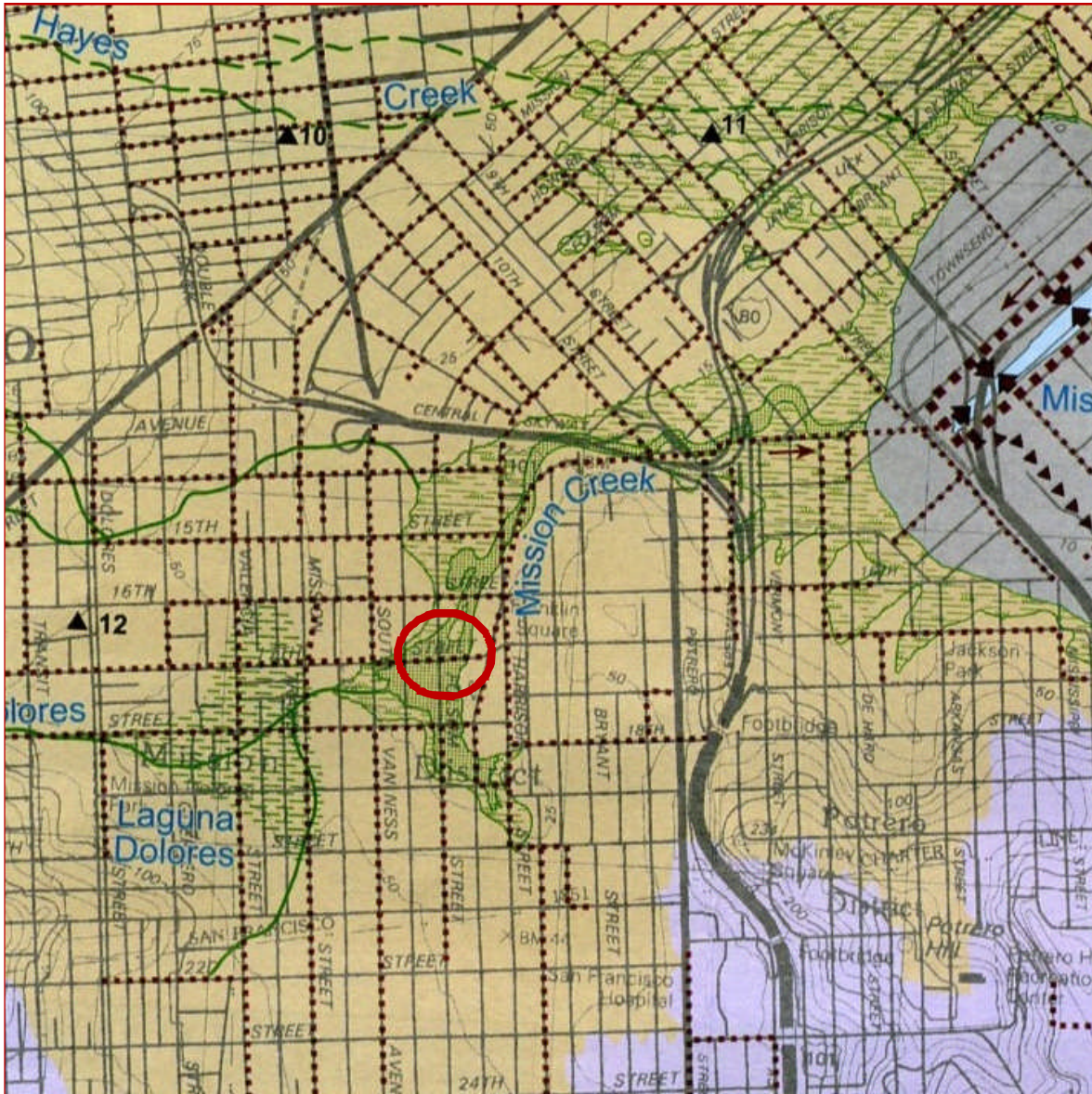


Community Garden Option



Lawn/ Outdoor Classroom/Community Garden Option





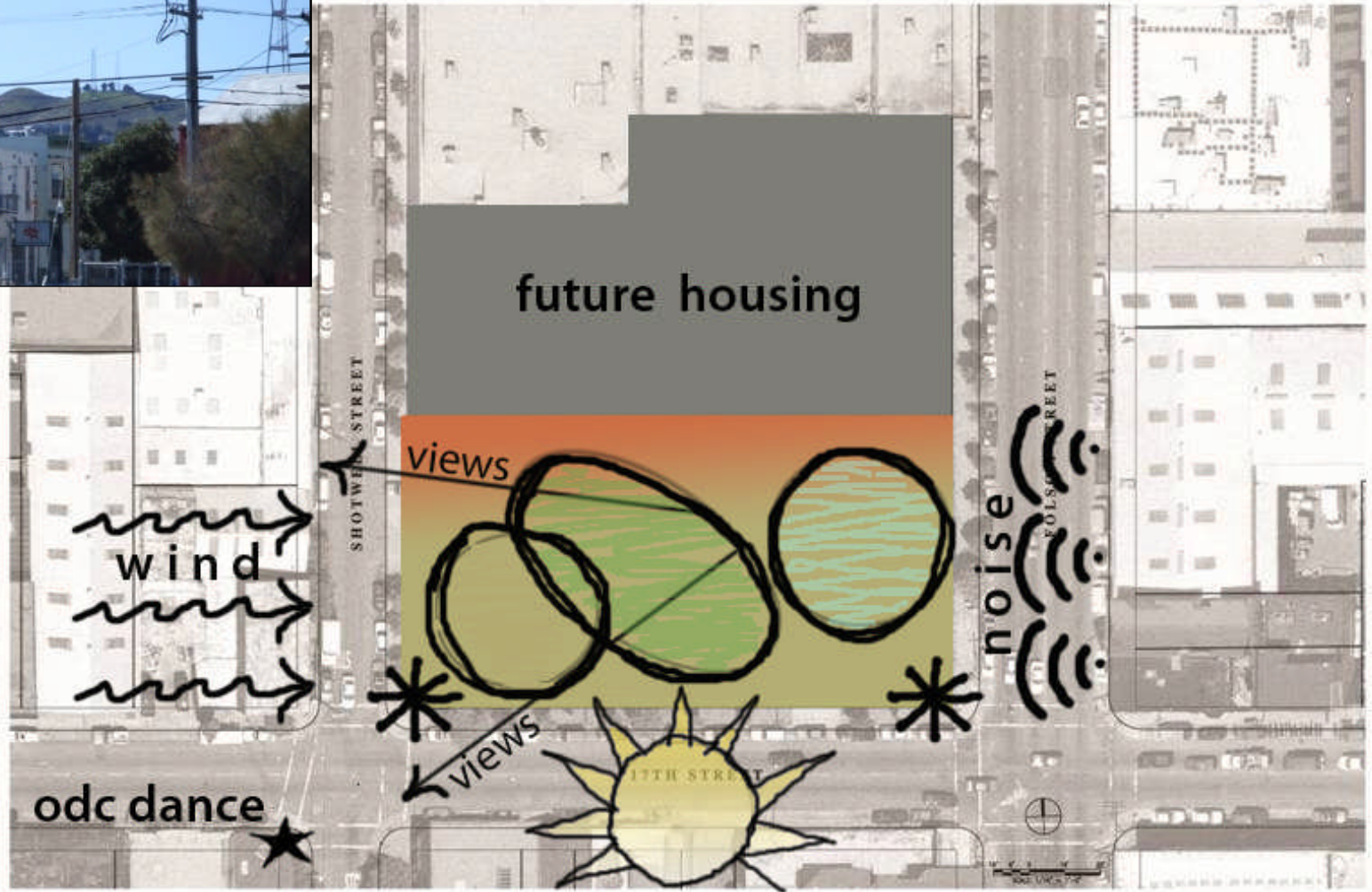
Historic Map:
Site alignment with Mission Creek



17th & Folsom Park

Underlying Design
Influence

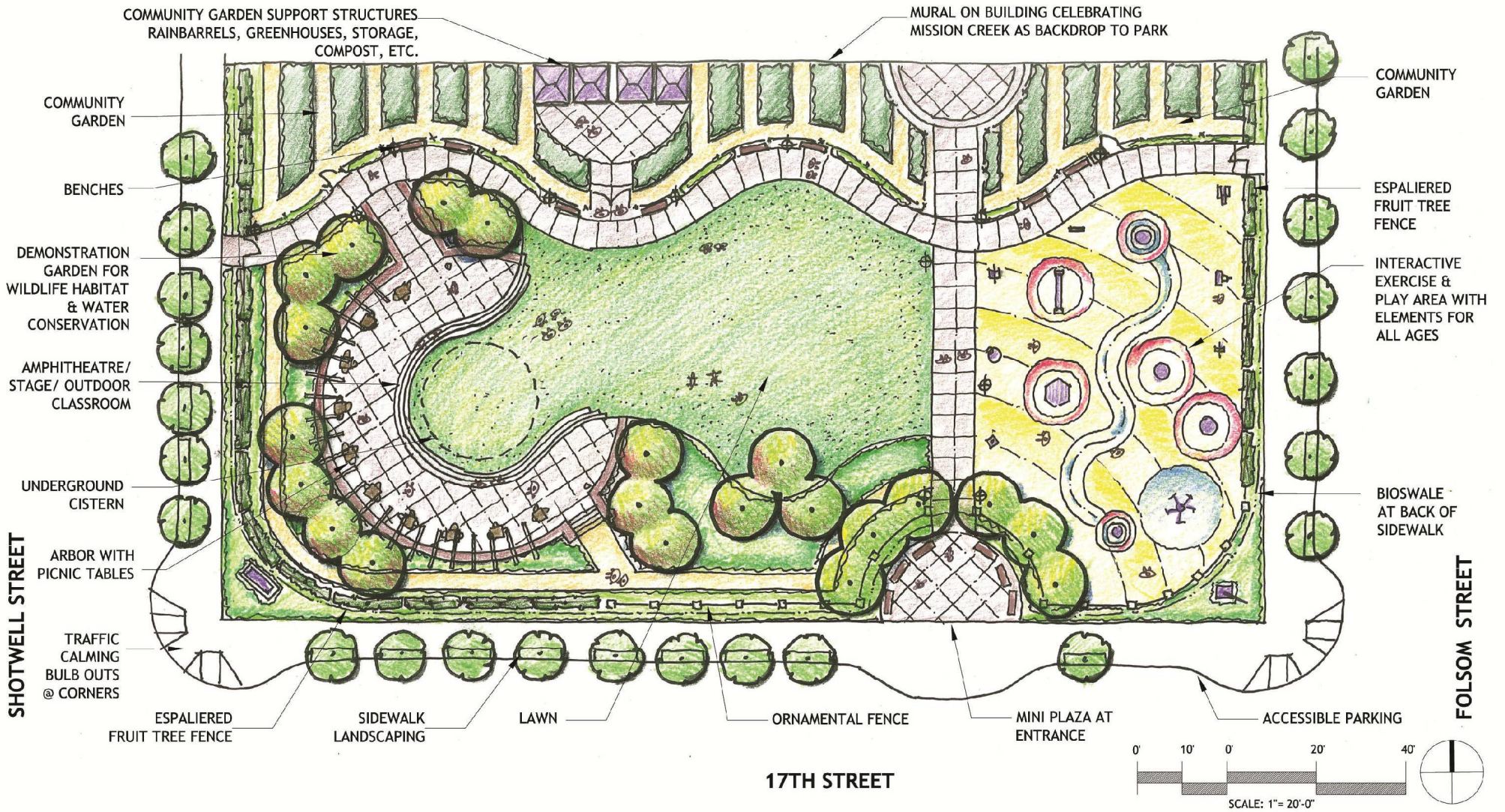
CONSULTANT:
DEPARTMENT OF PUBLIC WORKS
LANDSCAPE ARCHITECTURE SECTION



17th & Folsom Park

Concept Diagram

CONSULTANT:
DEPARTMENT OF PUBLIC WORKS
LANDSCAPE ARCHITECTURE SECTION



17th & Folsom Park

Grant Concept Plan

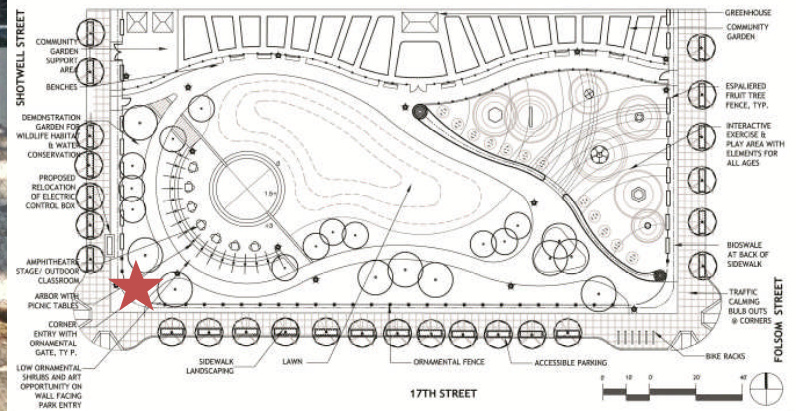
CONSULTANT:
DEPARTMENT OF PUBLIC WORKS
LANDSCAPE ARCHITECTURE SECTION



17th & Folsom Park

Concept Plan

CONSULTANT:
DEPARTMENT OF PUBLIC WORKS
LANDSCAPE ARCHITECTURE SECTION



**Transformer
Location**



17th & Folsom Park Existing Condition

**CONSULTANT:
DEPARTMENT OF PUBLIC WORKS
LANDSCAPE ARCHITECTURE SECTION**



17th & Folsom Park

Community Garden

CONSULTANT:
DEPARTMENT OF PUBLIC WORKS
LANDSCAPE ARCHITECTURE SECTION



17th & Folsom Park

Activity Play Zone

CONSULTANT:
DEPARTMENT OF PUBLIC WORKS
LANDSCAPE ARCHITECTURE SECTION



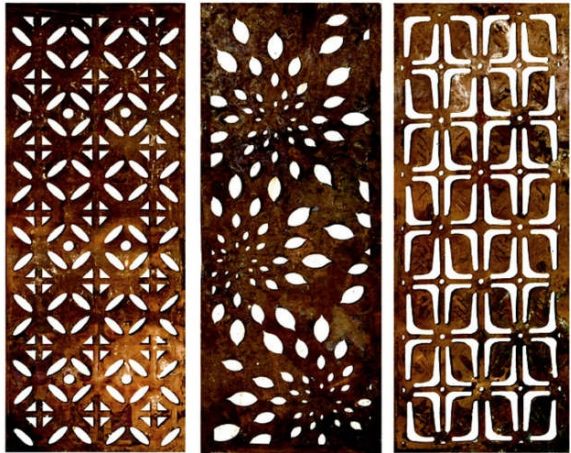
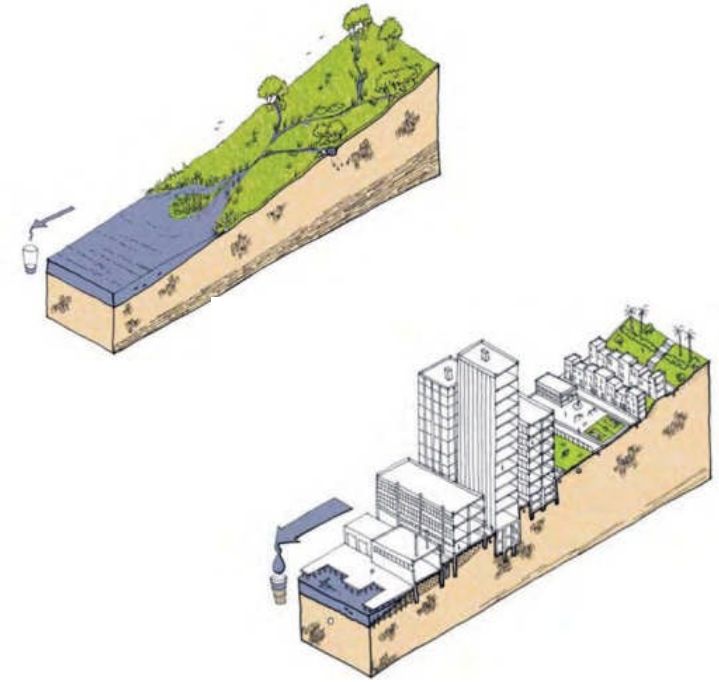
Demonstration Gardens



17th & Folsom Park

Gathering Area

CONSULTANT:
DEPARTMENT OF PUBLIC WORKS
LANDSCAPE ARCHITECTURE SECTION



17th & Folsom Park

Perimeter

CONSULTANT:
DEPARTMENT OF PUBLIC WORKS
LANDSCAPE ARCHITECTURE SECTION



Public Art Program

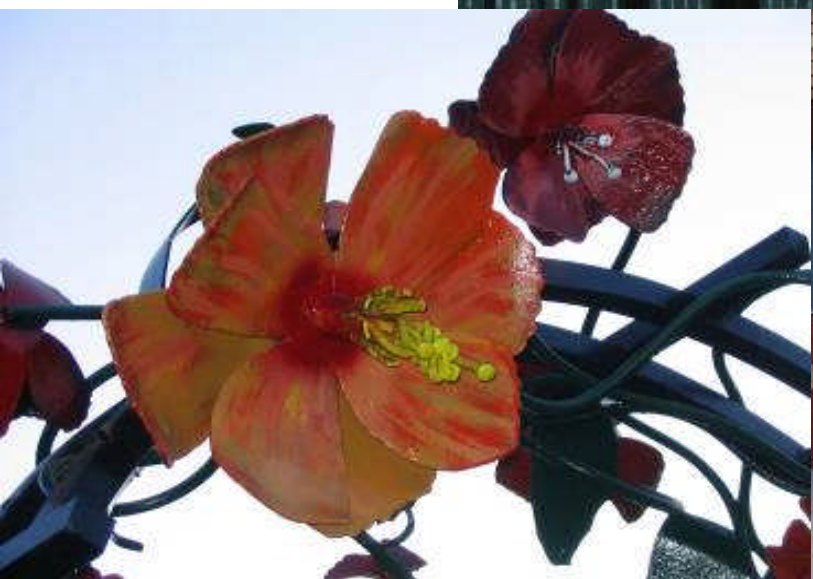
Public Art Program Established
by Administrative Code in 1969

- 2% of Construction Costs of all new Capital Improvement Projects allocated for Art Enrichment
- 17th and Folsom park will generate \$25,840 to commission an artwork.



Amy Blackstone: Hoff Park

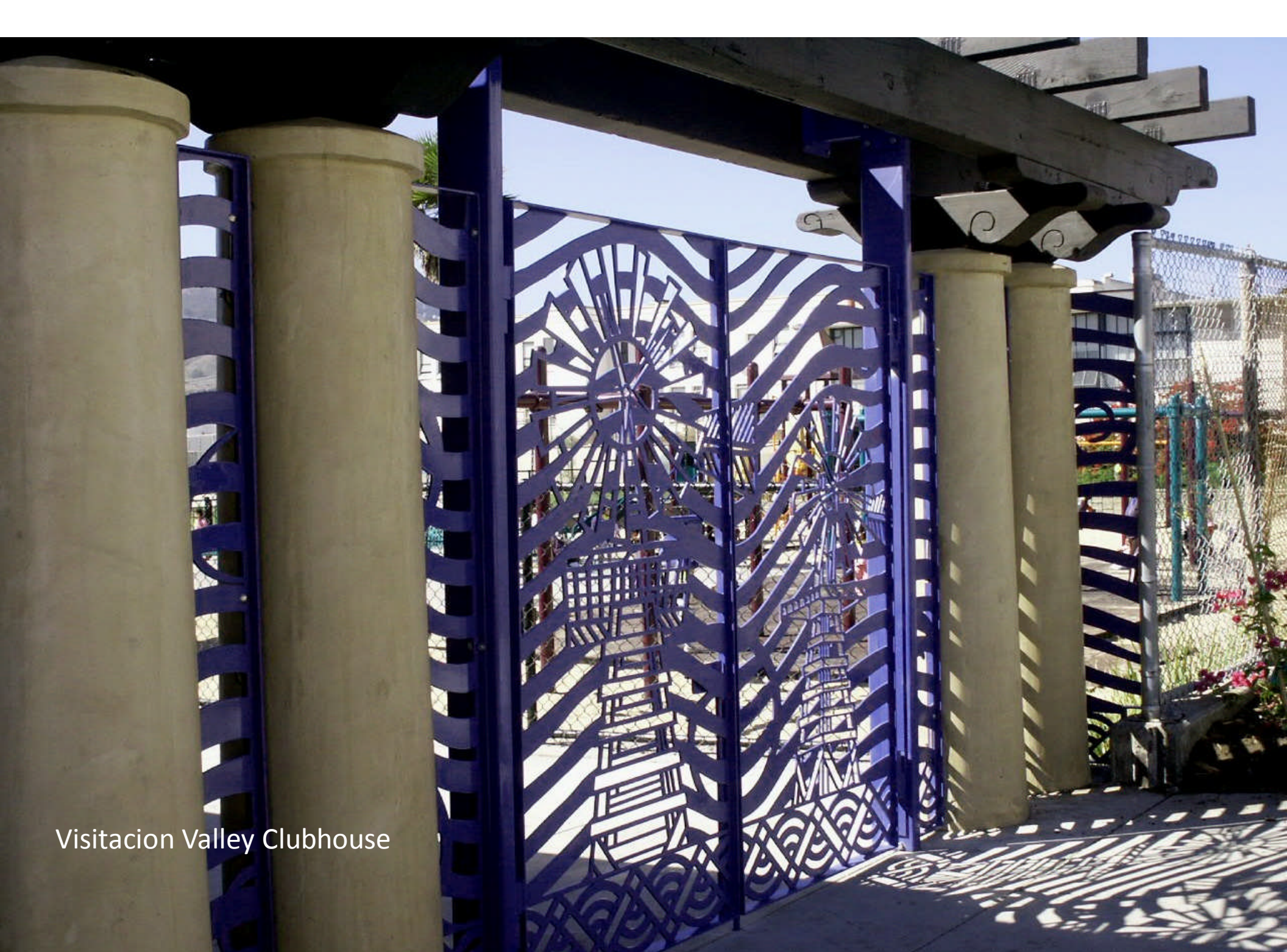








Isis Rodriguez:
Potrero del Sol



Visitation Valley Clubhouse



Panel for Mission Recreation Center

Process

- Selection Panel formed consisting of 1 representative from client agency, 1 from Arts Commission, 2 community members
- Panel reviews short list from Arts Commission pre-qualified pool of artists.
- Panel selects one artist based on past work to develop proposal for the site.
- Arts Commission approves panel recommendation.

Process (continued)

- Artist develops proposal for site; proposal displayed on SFAC website and another public location in neighborhood for comment.
- Arts Commission approves final design
- Design given to General Contractor to execute as part of construction.

Community Garden Program – Definition

A site operated and maintained by committed volunteers:

- For non-commercial use through garden plots, and
- Where instructional gardening may be offered, and
- Where common expenses are covered through self-imposed garden fees.



Koshland Community Garden



Community Garden Program – Overview

- 35 community gardens (and growing!)
- Volunteer-maintained
- \$150,000 min. annual budget
- Community Garden Policies
(available at www.parks.sfgov.org)



Clipper Terrace Community Garden



17th & Folsom Park

Community Garden
Program

CONSULTANT:
DEPARTMENT OF PUBLIC WORKS
LANDSCAPE ARCHITECTURE SECTION

Community Garden Program – City Responsibilities

- Provide basic infrastructure
 - Garden plots
 - Hose bibs
 - Tool shed
 - Compost bins
 - Fences and gates
 - Bulletin board
 - Signage
- Maintain infrastructure
- Enforce Community Garden Policies
- Update webpage

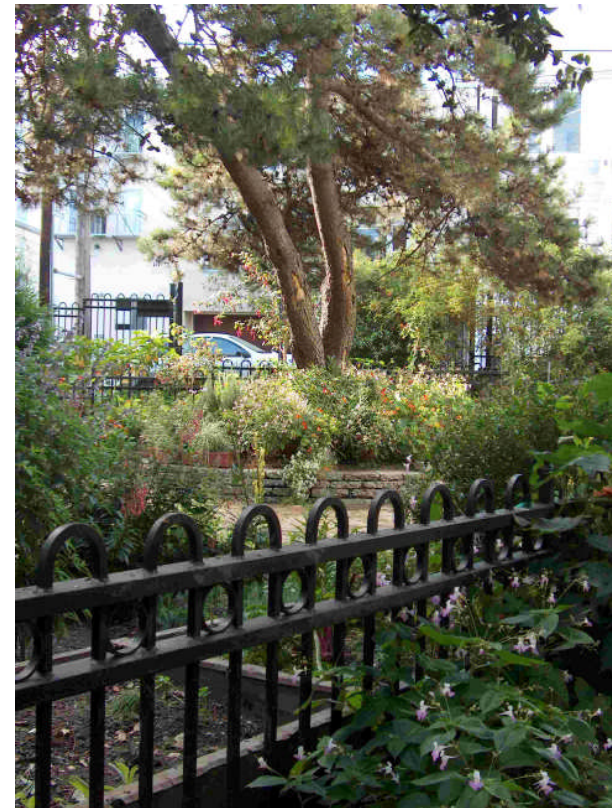


Community Garden Program – Gardener Responsibilities

- Plant and maintain garden plots and common areas
- Comply with personal consumption requirements
- Collect annual dues, if any
- Ensure public access
- Develop program enhancements



Noe/Beaver Community Garden



Page/Laguna Community Garden



Community Garden Program – Program Enhancement Ideas

- Educational opportunities
- Food preparation classes
- Greenhouse
- Fruit orchard
- Gathering space
- Maintain beehives
- Raise chickens for eggs



Treat Commons at PNU



Visitation Valley Greenway Community Garden



17th & Folsom Park

Community Garden
Program

CONSULTANT:
DEPARTMENT OF PUBLIC WORKS
LANDSCAPE ARCHITECTURE SECTION

Proposed Schedule

Spring 2012 / Planning
Finalize the Concept Plan

Spring 2012 –Spring 2013/ Design
Detailed design of the park site

Spring 2013/ Bid & Award
Contract the work to build the park

Spring 2013-Spring 2014
Site Remediation and Construction

Spring 2014
Park is Built!



Three Group Breakout Session Carousel



- Community Gathering Space
- Play Area
- Community Garden



17th & Folsom Park

Meeting Structure

CONSULTANT:
DEPARTMENT OF PUBLIC WORKS
LANDSCAPE ARCHITECTURE SECTION



Thank you & Please Try Out the Exercise Equipment!

- <http://17thfolsompark.sfplanning.org>
- Mary Hobson, Project Manager
mary.hobson@sfgov.org