

**17<sup>th</sup> and Folsom  
Future Park  
Community Meeting #1  
January 23, 2010**



**SAN FRANCISCO  
PLANNING DEPARTMENT**



**San Francisco Department of Public Works**

**San Francisco Recreation & Parks**

# 17<sup>th</sup> and Folsom Future Park

---

## Agenda

- Background presentation
- Values discussion
- Breakout groups to design the park
- Report back
- Next steps

# **17<sup>th</sup> and Folsom New Park**

---

## **City of San Francisco Project Team**

### **Planning Department**

Susan Exline, Planner

### **Recreation and Park Department (RPD)**

Karin Edwards, Planner

### **Department of Public Works (DPW)**

John Dennis, Landscape Architect

Andrea Alfonso, Landscape Architect



# 17th and Folsom Future Park Location





# Community meetings

**Today**

Design the Park

**February 6th**

Presentation of Alternatives

**March-October**

Finalize Conceptual Plan

# Planning Process and Grant Application

Grant application due March 1st

Finalize conceptual design

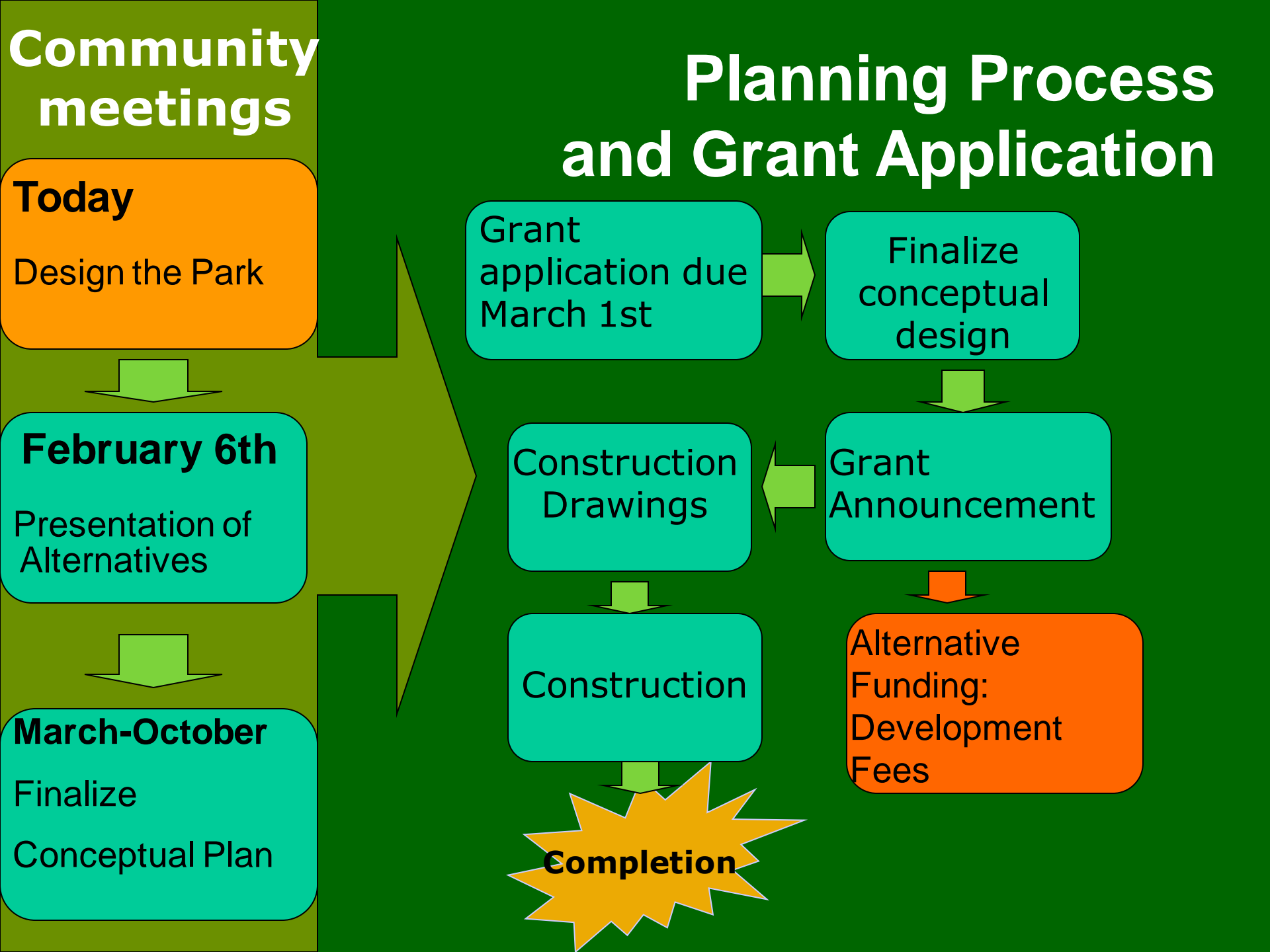
Construction Drawings

Grant Announcement

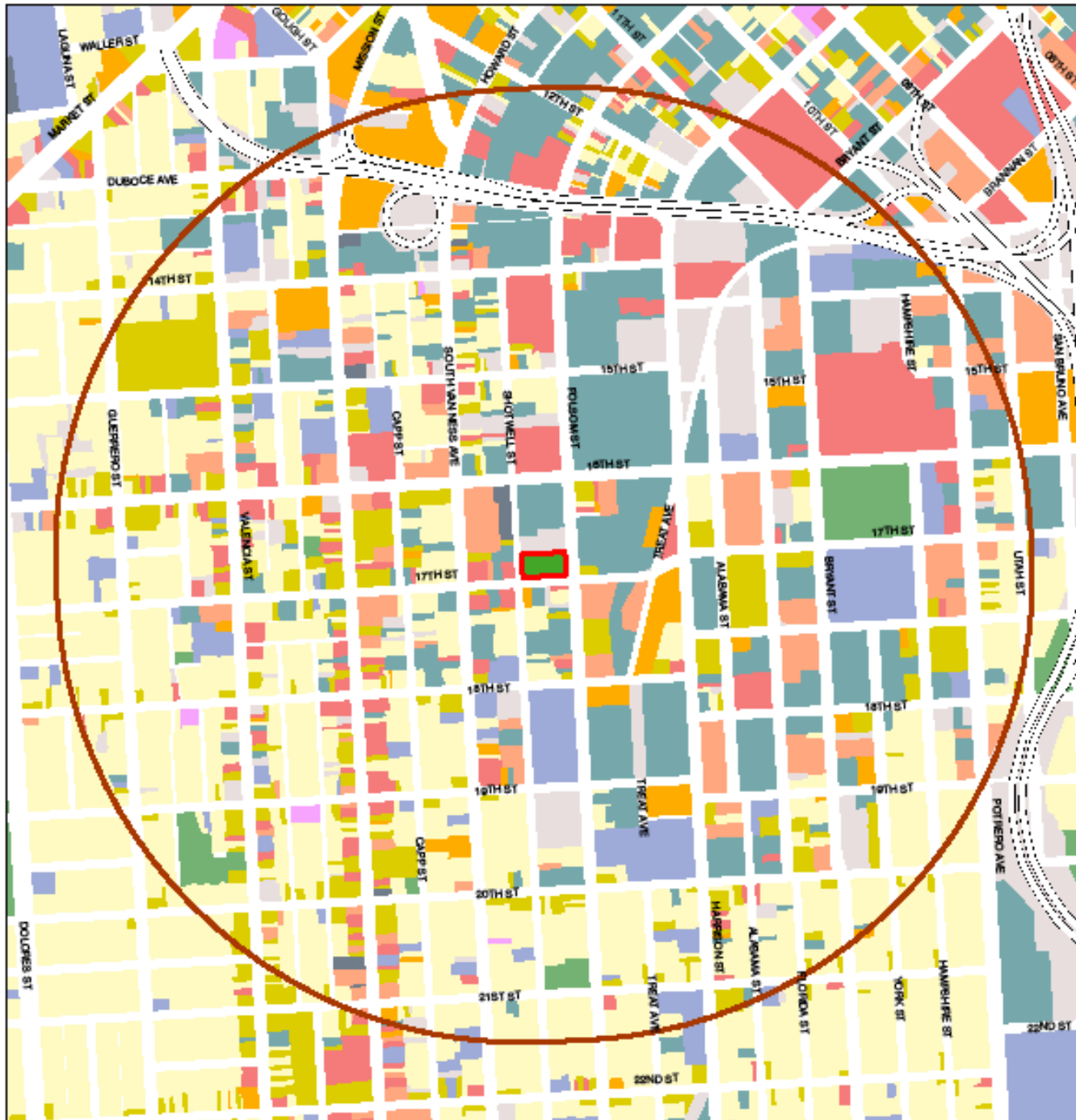
Construction

Alternative Funding: Development Fees

**Completion**



# Land Uses



# Public Transit and Bicycle Routes



# 17<sup>th</sup> and Folsom Future Park Neighborhood Context



Yelp.com



# 17<sup>th</sup> and Folsom Future Park Neighborhood Context



## Vicinity Map

$\frac{1}{4}$  mile = 5 minute walk

$\frac{1}{2}$  mile = 10 minute walk

# 17<sup>th</sup> and Folsom Future Park

## Neighborhood Context

Kidpower  
Park  
1/4 acre



Future  
Park  
3/4 acre



## Kidpower Park

.23 acre park on Hoff Street Alley  
between 16<sup>th</sup> and 17<sup>th</sup> Streets

### Amenities:

- **Playground**
- **Community Garden**
- **Fountain**
- **Picnic Area**

# 17<sup>th</sup> and Folsom Future Park

## Neighborhood Context

Franklin  
Square  
5 + acre



Future  
Park  
3/4 acre

## Franklin Square

5 + acre park on Bryant Street between  
16<sup>th</sup> and 17<sup>th</sup> Streets

### Amenities:

- Playground
- Future Restroom
- Soccer Field
- Picnic Area
- Perennial Beds





# 17<sup>th</sup> and Folsom Future Park

## Neighborhood Context



 Dearborn  
Garden  
.15 acre

 Future  
Park  
3/4 acre

## Dearborn Community Garden

.15 acre garden on Dearborn Street  
between 16<sup>th</sup> and 17<sup>th</sup> Streets

Amenities:

- **Community Garden**



# 17<sup>th</sup> and Folsom Future Park

## Neighborhood Context



**Mission  
Pool & PG**  
2+ acre



**Future  
Park**  
3/4 acre



## Mission Pool & Playground

2 + acre park on Valenica Street  
between 18<sup>th</sup> and 19<sup>th</sup> Streets

Amenities:

- **Playground**
- **Clubhouse**
- **Restrooms**
- **Swimming Pool**
- **Tennis**
- **Basketball courts**
- **Soccer/Playfield**
- **Picnic Area**
- **Small Lawn Area**



# 17<sup>th</sup> and Folsom Future Park

## Neighborhood Context



Alitoto  
Mini Park  
.16 acre



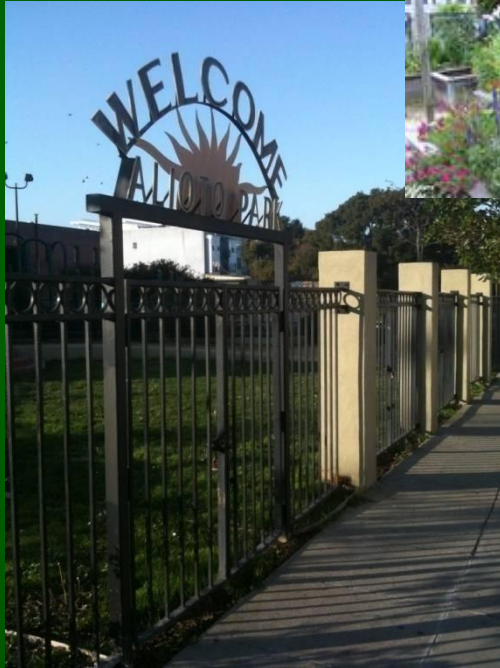
Future  
Park  
3/4 acre

## Alioto Mini Park

.16 acre garden on 20<sup>th</sup> @ Capp St.

Amenities:

- Community Garden
- Playground
- Gazebo
- Benches





# 17<sup>th</sup> and Folsom Future Park

## Neighborhood Context



Coronado  
Playground  
3/4 acre



Future  
Park  
3/4 acre



## Jose Coronado Playground

.78 acre park on 21 St. between  
Folsom and Shotwell Streets

Amenities:

- Playground
- Clubhouse
- Basketball/Soccer
- Restrooms
- Swimming Pool
- Tennis

# 17<sup>th</sup> and Folsom Future Park

## Neighborhood Context



Mission  
Recreation  
Center  
5/8 acre



Future  
Park  
3/4 acre



## Mission Recreation Center

.63 acre park on Treat Ave  
between 20<sup>th</sup> and 21<sup>th</sup> Streets

### Amenities:

- Parking
- Clubhouse
- Micro Soccer Field



# 17<sup>th</sup> and Folsom Future Park

## Neighborhood Context

 **Fallen Bridge Park**  
1/10th acre

 **Future Park**  
3/4 acre



## Utah & 18<sup>th</sup> Mini Park (Fallen Bridge)

.10 acre park at 18<sup>th</sup> and Utah Streets

Amenities:

- **Perennial Beds**
- **Benches/ Seatwalls**



# 17<sup>th</sup> and Folsom Future Park

## Neighborhood Context



Future  
Park  
3/4 acre



PNU Park  
1/2 acre

## Parque Niños Unidos

.53 acre park at 23<sup>rd</sup> and Treat Streets



### Amenities:

- Playground
- Clubhouse
- Restrooms
- Community garden
- Lawn Play Area





# 17<sup>th</sup> and Folsom Future Park

## Neighborhood Context



Future  
Park  
3/4 acre



Dolores Park  
14+ acres

## Mission Dolores Park

14 + acre park at Dolores Street between  
18<sup>th</sup> and 20<sup>th</sup> Streets

Amenities:

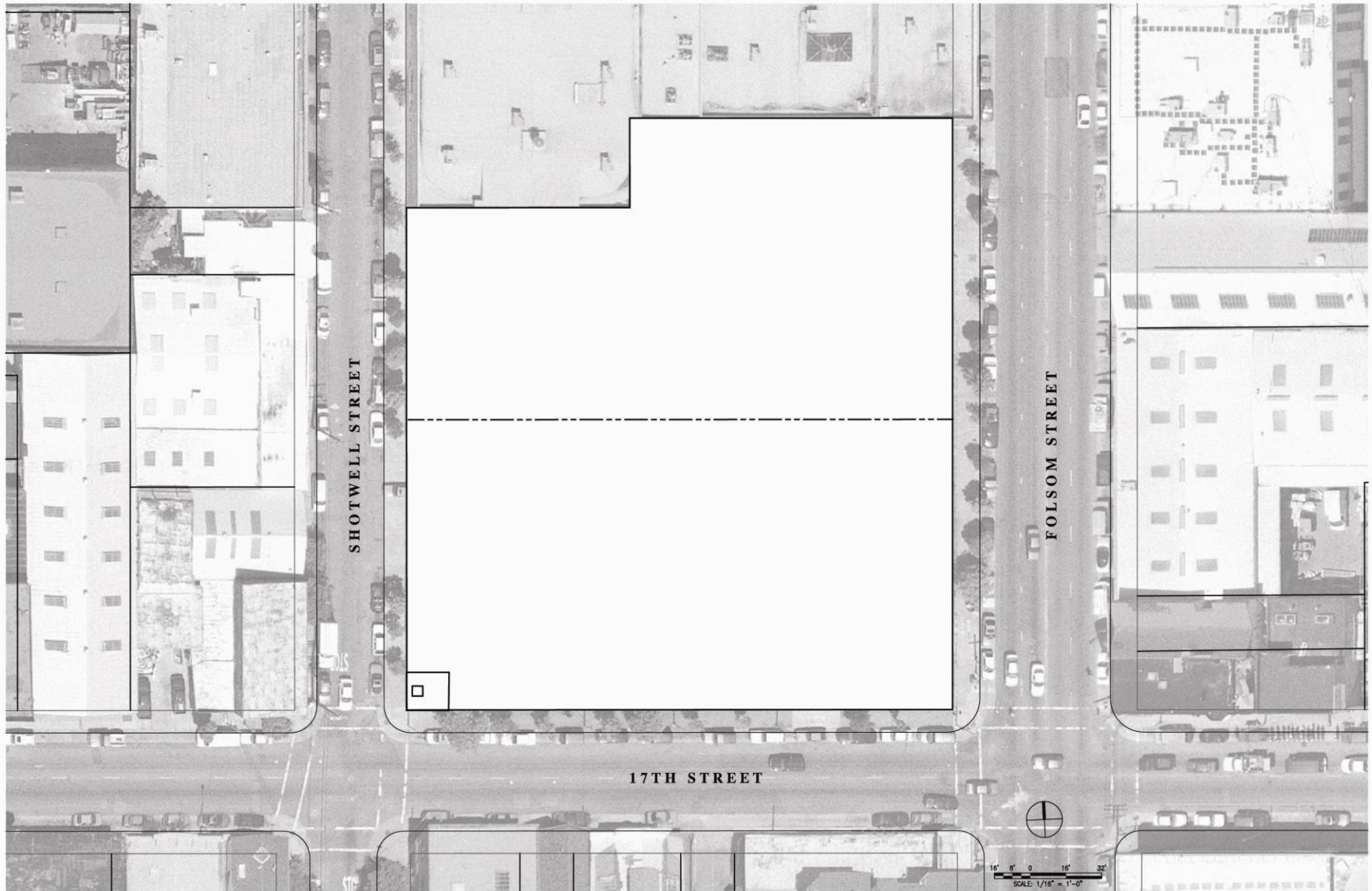
- Playground
- Clubhouse
- Basketball
- Dog Run
- Picnic Area
- Informal Soccer
- Tennis
- Open Lawn/Play Areas

# Existing Conditions



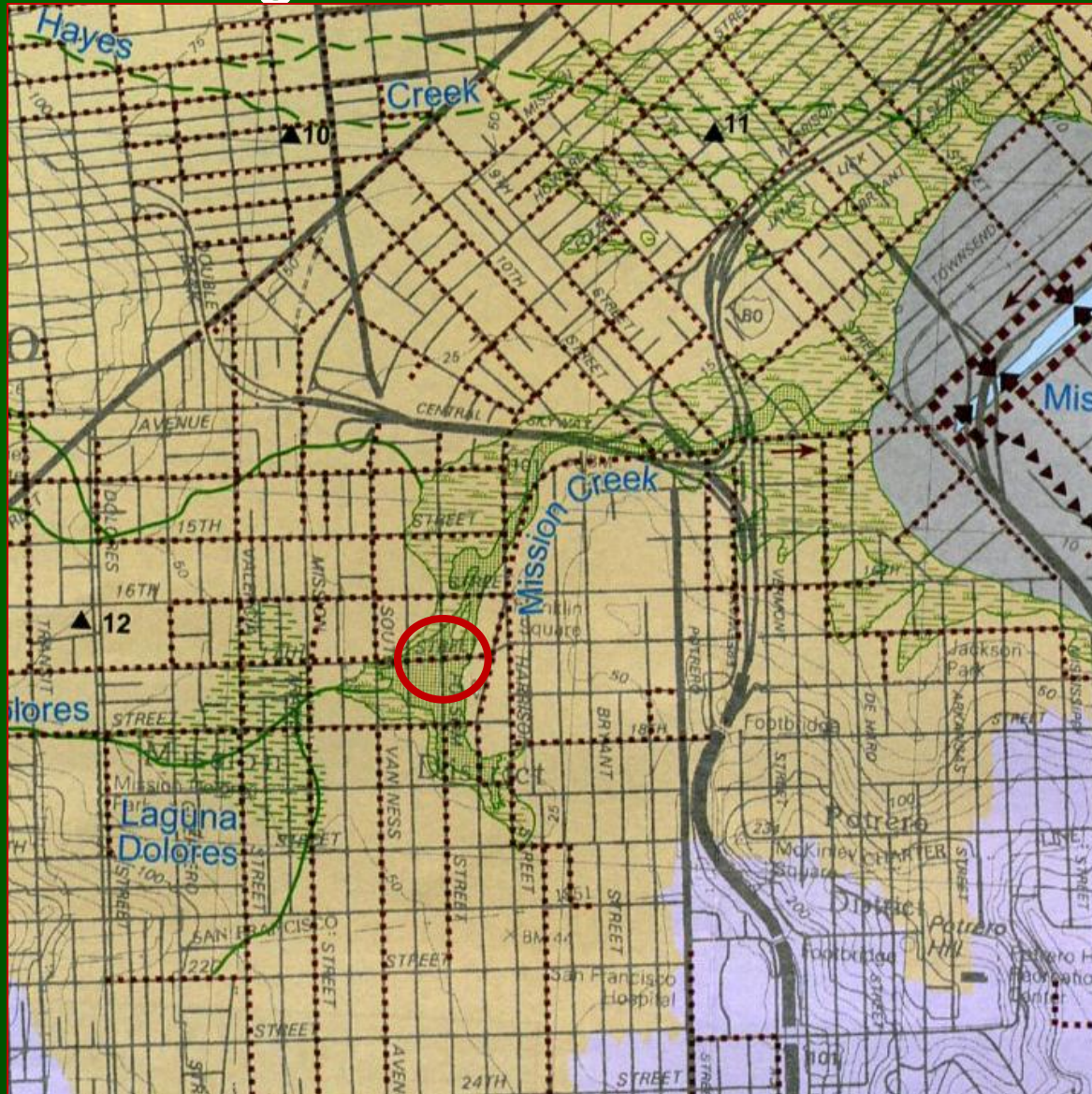
# 17<sup>th</sup> and Folsom Future Park

## Existing Conditions



# 17<sup>th</sup> and Folsom Future Park

## Existing Conditions

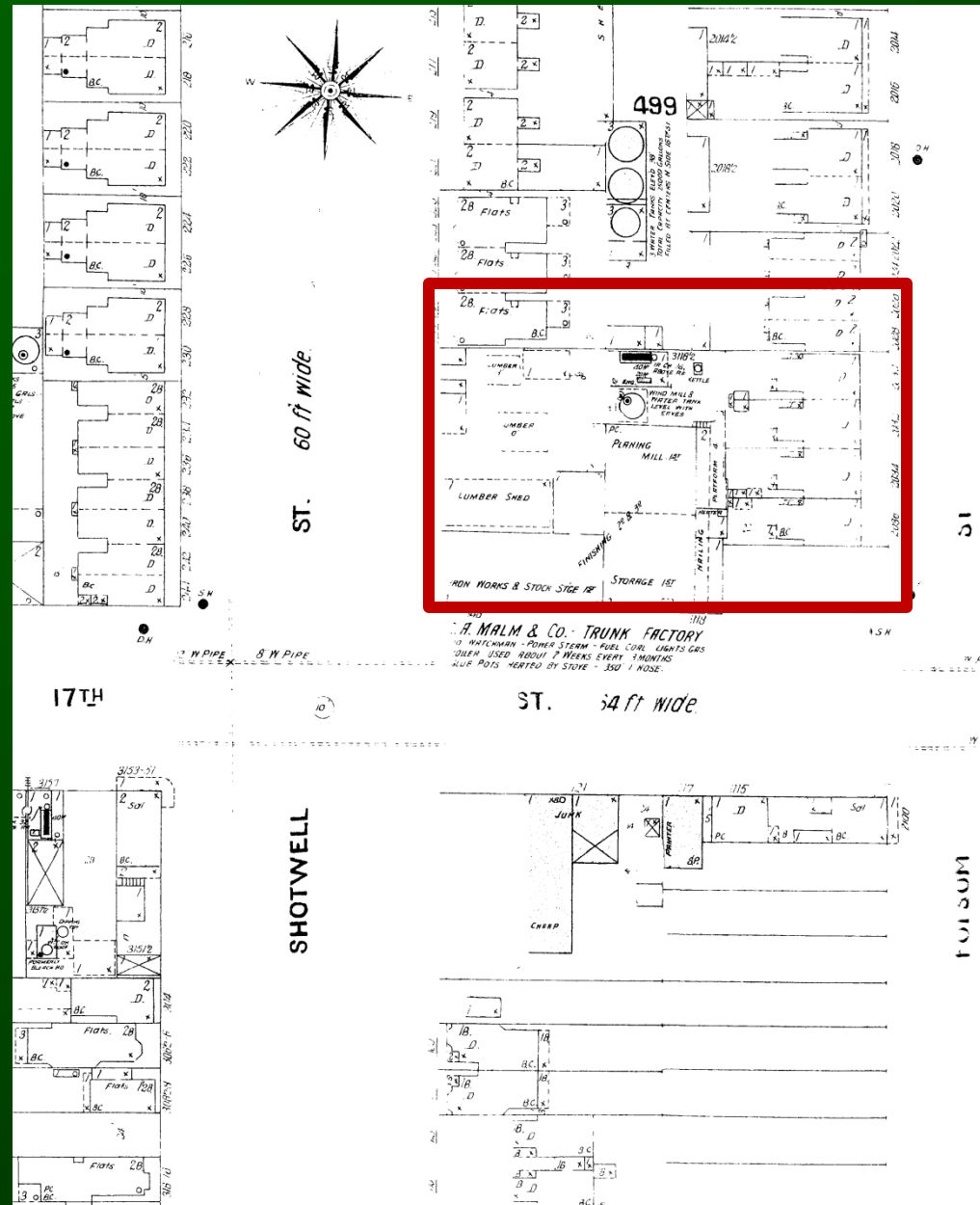


**Historic Conditions  
Mission Creek**



# 17<sup>th</sup> and Folsom Future Park

## Existing Conditions



Historic Conditions 1900

# 17<sup>th</sup> and Folsom Future Park

## Existing Conditions



*Chorisia speciosa* (Silk Floss Tree)  
*Brachychiton acerfolius* (Flame tree)  
*Brachychiton populneus* (Bottle tree)  
*Jacaranda mimosifolia* (Jacaranda)  
*Acacia baileyana* (Bailey's Acacia)  
*Casuarina equisetifolia* (Horsetail tree)

Planted 1997

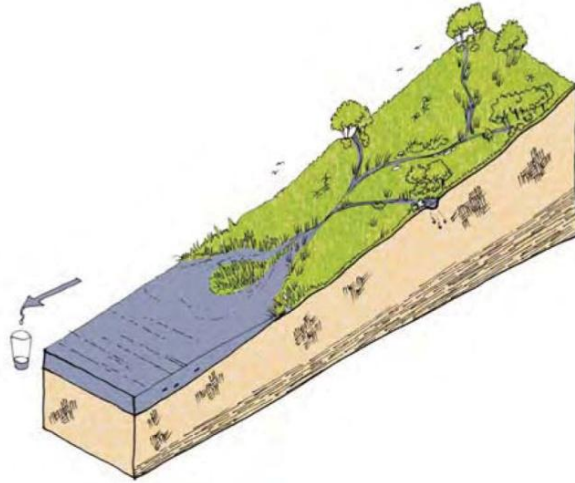
## Existing Street Trees



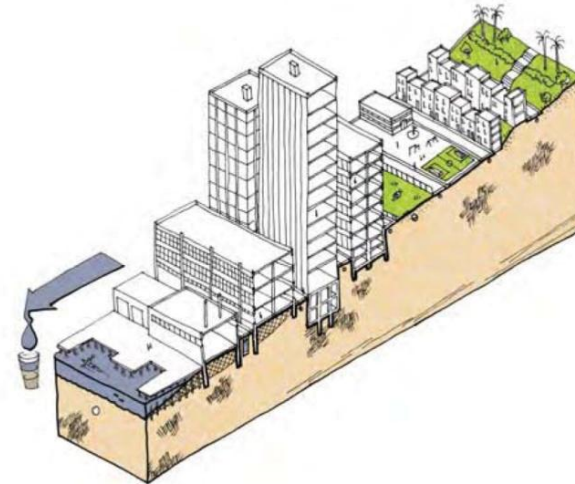
# Opportunities and Constraints

# 17<sup>th</sup> and Folsom Future Park

## Opportunities and Constraints



natural watercourse system



existing urban scenario

**Stormwater Issues**

# 17<sup>th</sup> and Folsom Future Park

---

## Opportunities and Constraints

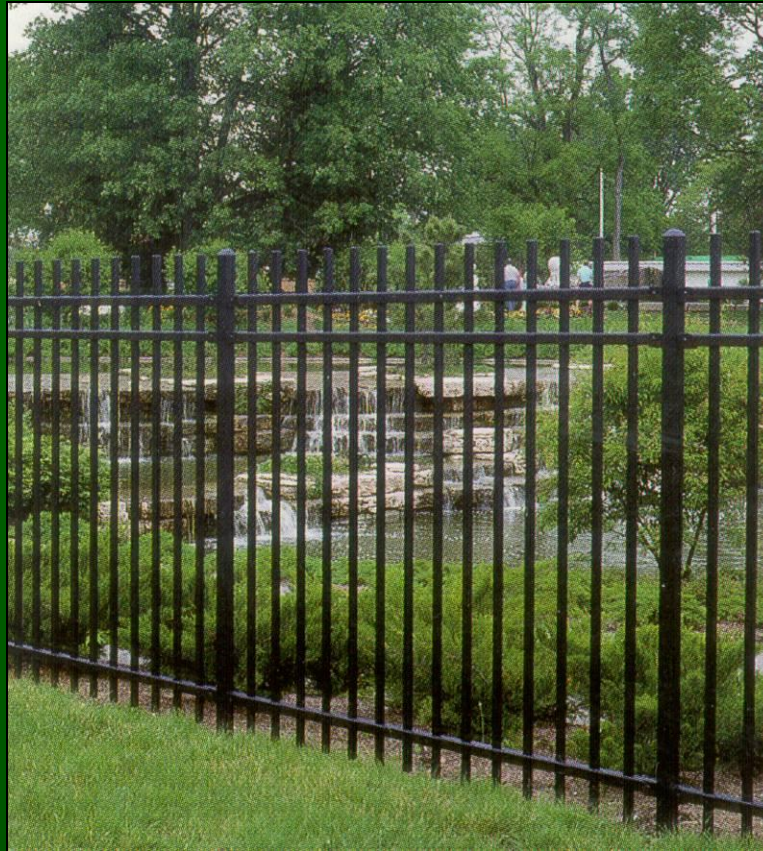


**Site Maintenance and Stewardship**



# 17<sup>th</sup> and Folsom Future Park

## Opportunities and Constraints



**Site Security**

# **Design Possibilities**



# 17<sup>th</sup> and Folsom Future Park

## Design Possibilities



**Fencing Design Opportunities**



# 17<sup>th</sup> and Folsom Future Park

## Design Possibilities



**Sustainable Materials**

# 17<sup>th</sup> and Folsom Future Park

## Design Possibilities



**Stormwater Mitigation**



# 17<sup>th</sup> and Folsom Future Park

## Design Possibilities



Shotwell Street



Stormwater Mitigation



# 17<sup>th</sup> and Folsom Future Park

## Design Possibilities



**Active Recreation - Sports Courts**



# 17<sup>th</sup> and Folsom Future Park

## Design Possibilities



Active Recreation - Playgrounds



# 17<sup>th</sup> and Folsom Future Park

## Design Possibilities



**Passive Recreation - Hanging Out and Picnic Areas**



# 17<sup>th</sup> and Folsom Future Park

## Design Possibilities



**Community  
Gardens**

# 17<sup>th</sup> and Folsom Future Park

---

## Design Possibilities



**Planting Areas &  
Habitat Creation**



# 17<sup>th</sup> and Folsom Future Park Design Possibilities



Community Events and Food



# 17<sup>th</sup> and Folsom Future Park

---

## Design Possibilities



**Potential Synergies with Proposed New Housing**



# 17<sup>th</sup> and Folsom Future Park Design Possibilities



*Hibiscus Trellis* by Amy Blackstone  
Kid Power Park



Public Art

# **17<sup>th</sup> and Folsom Future Park**

---

## **Design Possibilities**

**What do you value in a park?**



# **17<sup>th</sup> and Folsom Future Park**

---

## **Design Possibilities**

### **Design Exercise**

# Next Steps

- Community Meeting: Review Design Alternatives
  - Saturday, February 6<sup>th</sup> 11:00 am-2:00 pm, At the park site, 17<sup>th</sup> Street between Folsom and Shotwell
  - Stop by to see the designs and provide feedback!
  - <http://17thfolsompark.sfplanning.org>
  - Susan.Exline@sfgov.org



SAN FRANCISCO  
**PLANNING DEPARTMENT**



San Francisco Department of Public Works

San Francisco Recreation & Parks

**Thank You!**